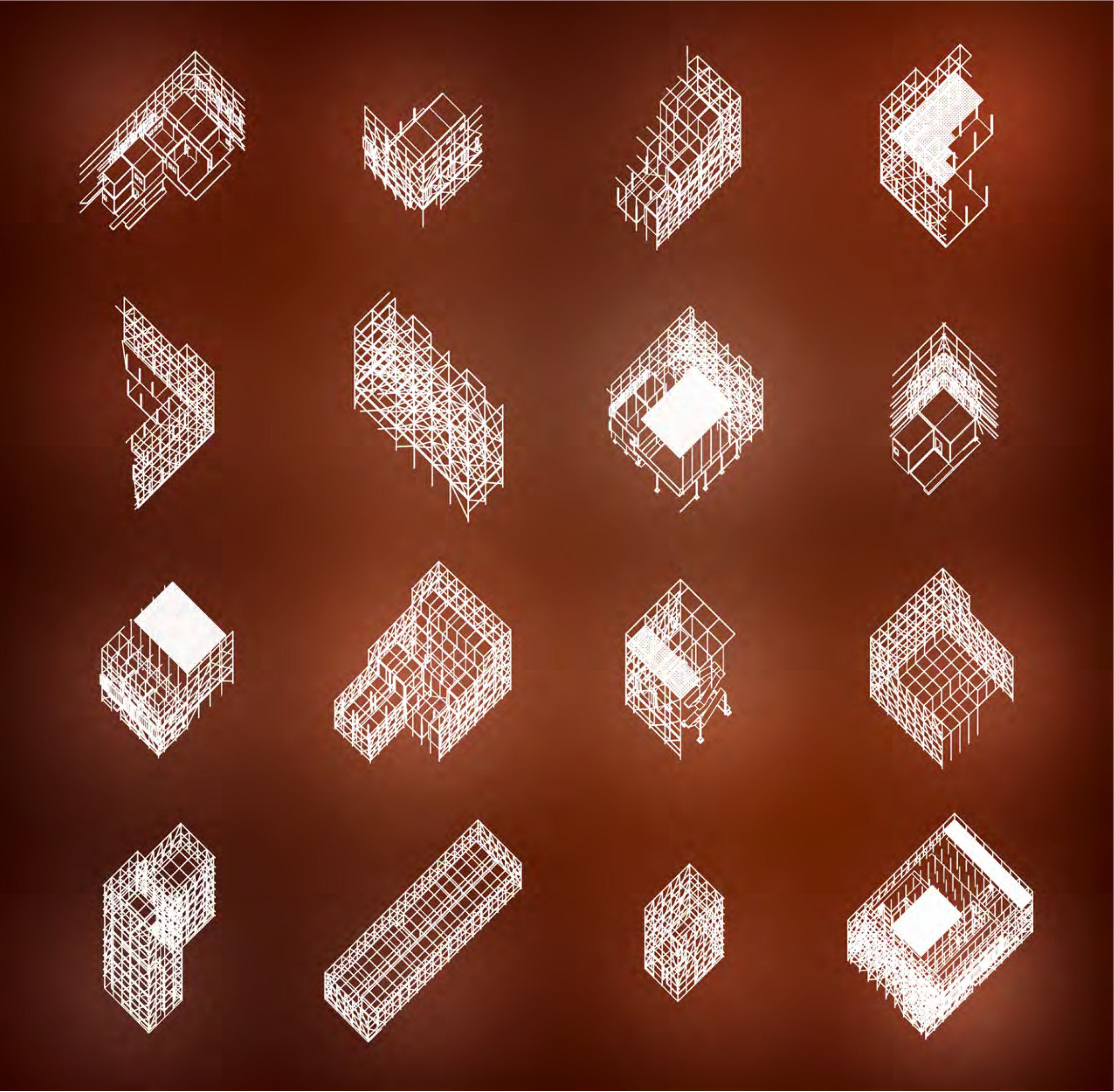


CLIMATE ACTION ASSEMBLY

51°30'16.34"N 0° 7'2.14"W
CENTRAL LONDON | UNITED KINGDOM
KEERTHIGAN THAVASEELAN



RECONFIGURATIONS OF CLIMATE ACTION ASSEMBLY

CLIMATE ACTION ASSEMBLY:
MANIFESTO

Our framing of climate change is mixed and differs from person to person through different framings of climate change. These consist of our internal and external framings of climate change which were explored in the thesis. Currently, it is possible to slow the rate of climate change but there needs to be a level of clarity to collectively determine the severity of the issue and take action.

REFRAMING
CLIMATE CHANGE

Internal/ external framings of cliamte change were reviewed. The current frame of climate change can be percieved as overwhelming and hard to understand from the scale and speed of the issue. The thesis explored how climate change could be reframed to with the aim of better understanding the problem from giving more exposure to solving local issues within Central London .

PROVIDING
CLIMATE CLARITY

The thesis also exposes strong invisible network of organisations that contribute towards climate disinformation in Central London, from oil giants to media outlets. My proposal aims to expose different organisations within the area, educating the public on disinformation tactics

SYNERGISING
CLIMATE ACTION

Currently, environmental NGOs in Central London are overshadowed by organisations that contribute towards climate disinformation + media outlets. This proposal also aims to initiate more environmental NGOs in the area, from the Climate Action Assembly itself becoming a base for different Environmental NGOS.

TRANSLATING
INVISIBLE ELEMENTS OF CLIMATE
CHANGE

The process of bringing intangible elements of climate change to the forefront, this includes the invisibility of carbon dioxide emmisions, were also explored. The aim was to let the public fully experience and understand the full consequence of the issue in their day-to-day life.



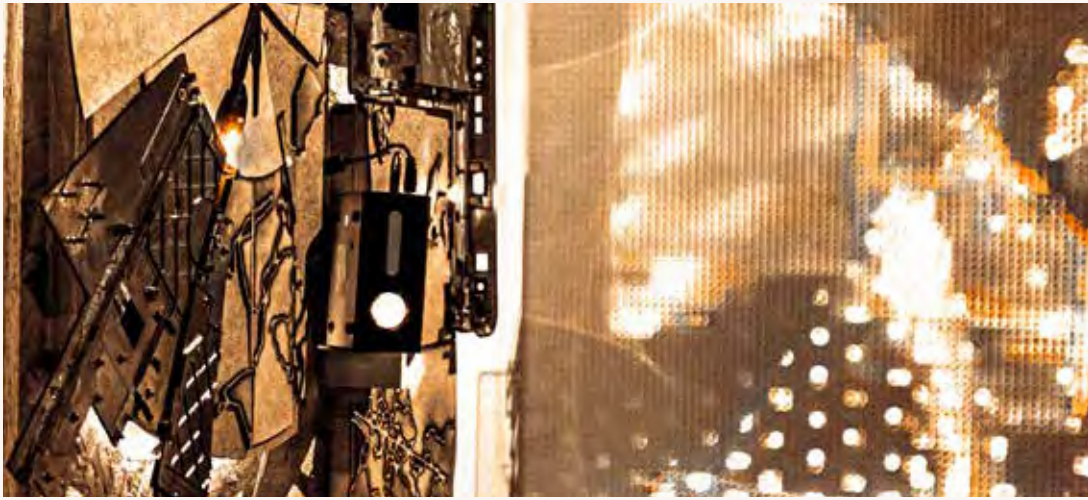
CLIMATE MUSIC PROJECT : PERFORMANCE

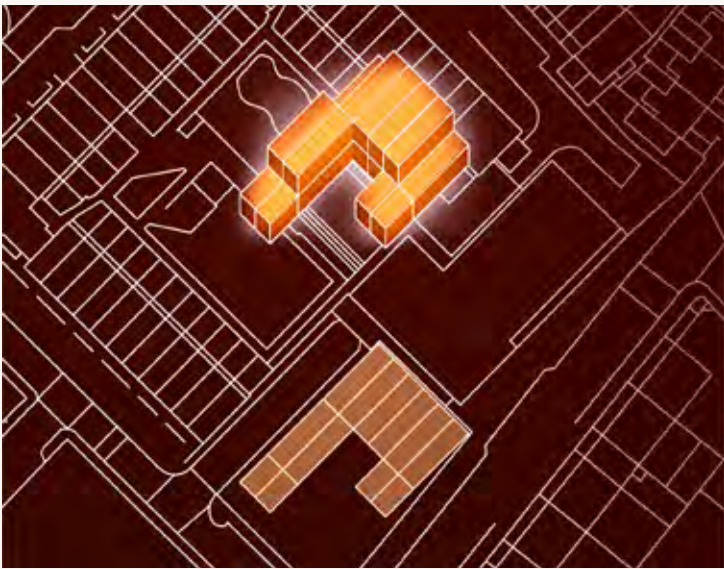
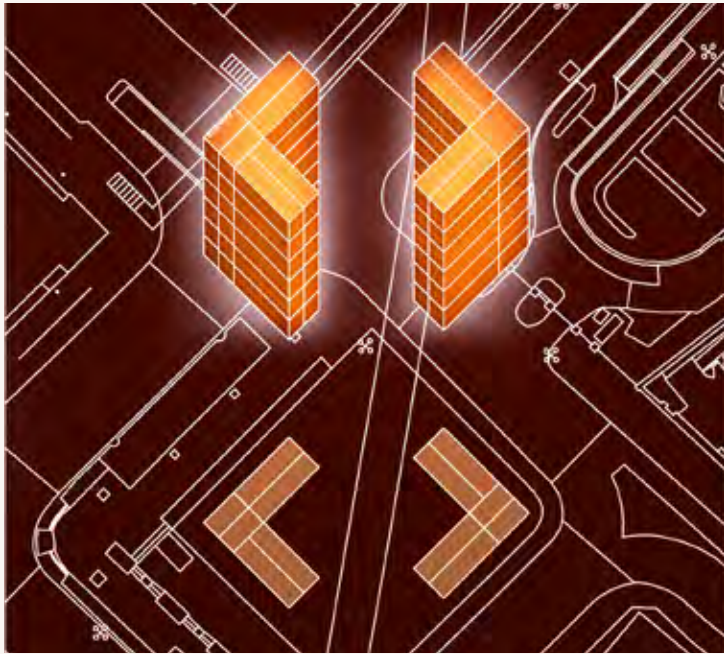
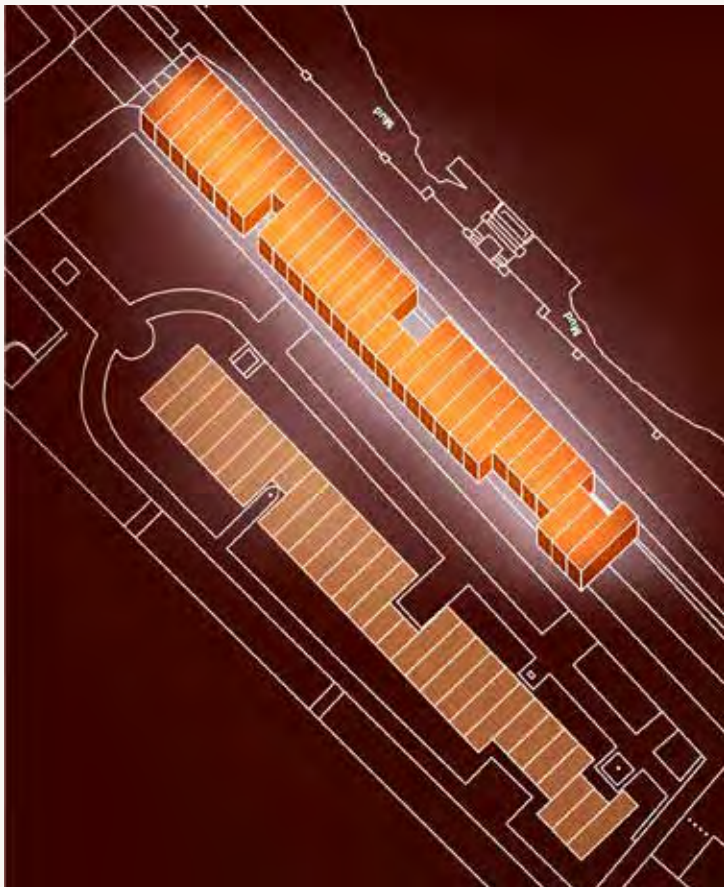


DESMOG : INDEPENDENT JOURNALISM



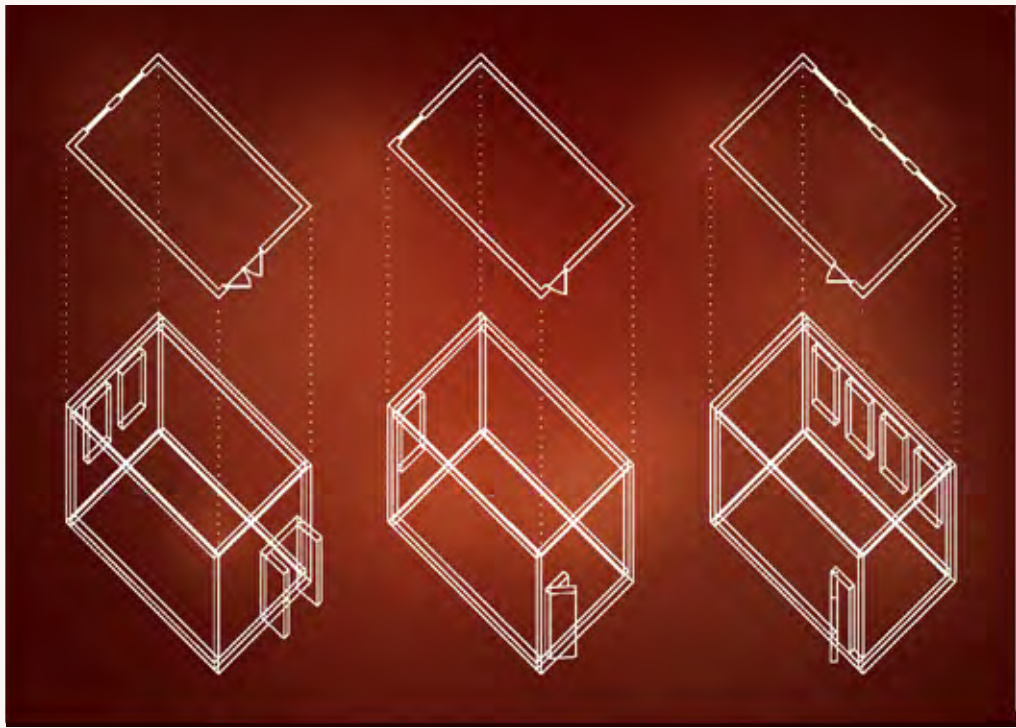
EXTINCTION REBELLION : HOLDING CAMPAIGNS/ WORKSHOPS/ EVENTS





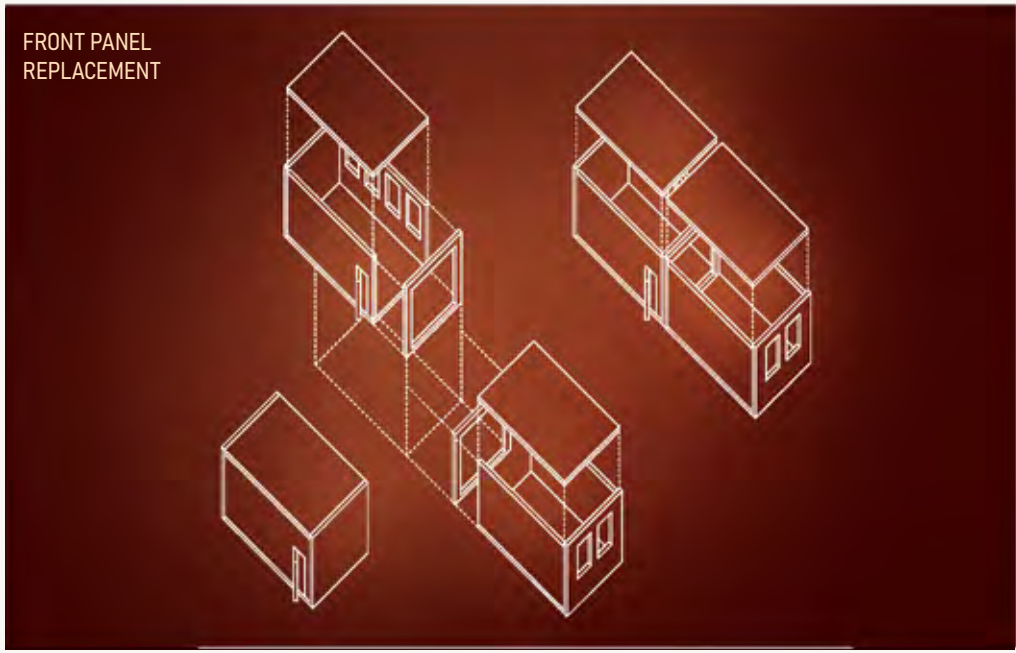
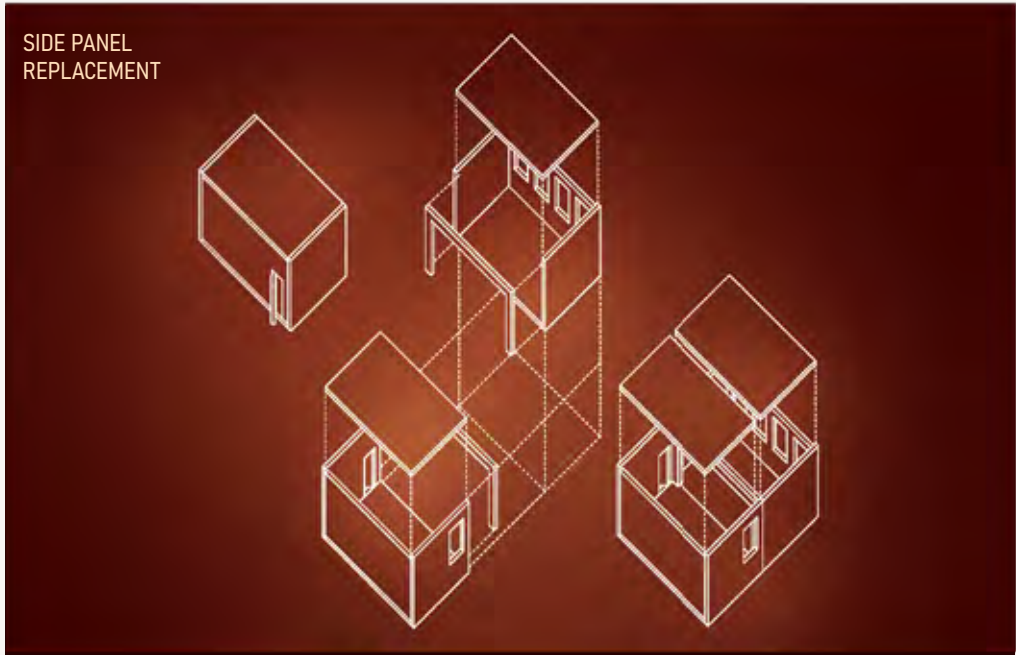
RECONFIGURATIONS WITH MODULES

SCALE - 1:70

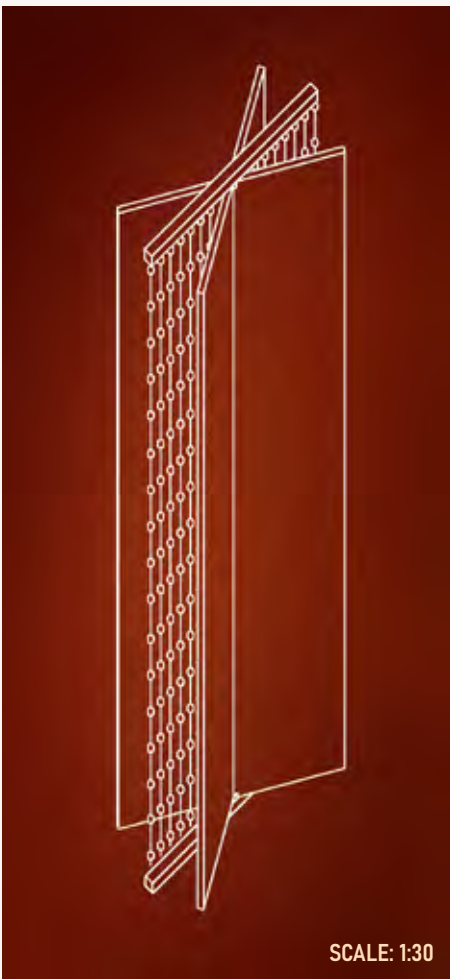


MODULE CONFIGURATIONS USED

SCALE - 1:170



EXTENDING INTERNAL SPACE OF MODULES THORUGH PANEL REPLACEMENT



OVERALL AXO

SCALE: 1:30

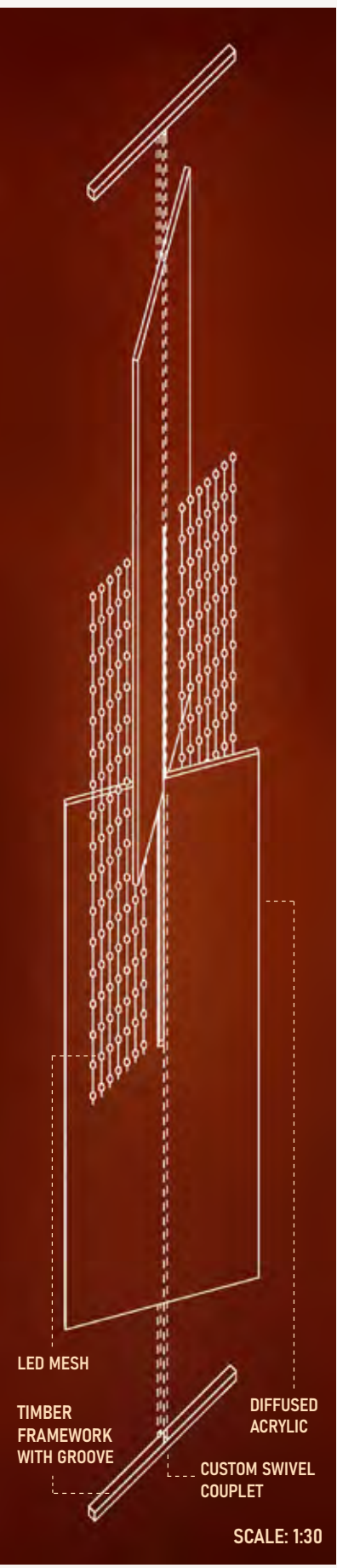


LOW READINGS OF CO2 PPM



HIGH READINGS OF CO2 PPM

LOUVRE PANEL CONNECTION



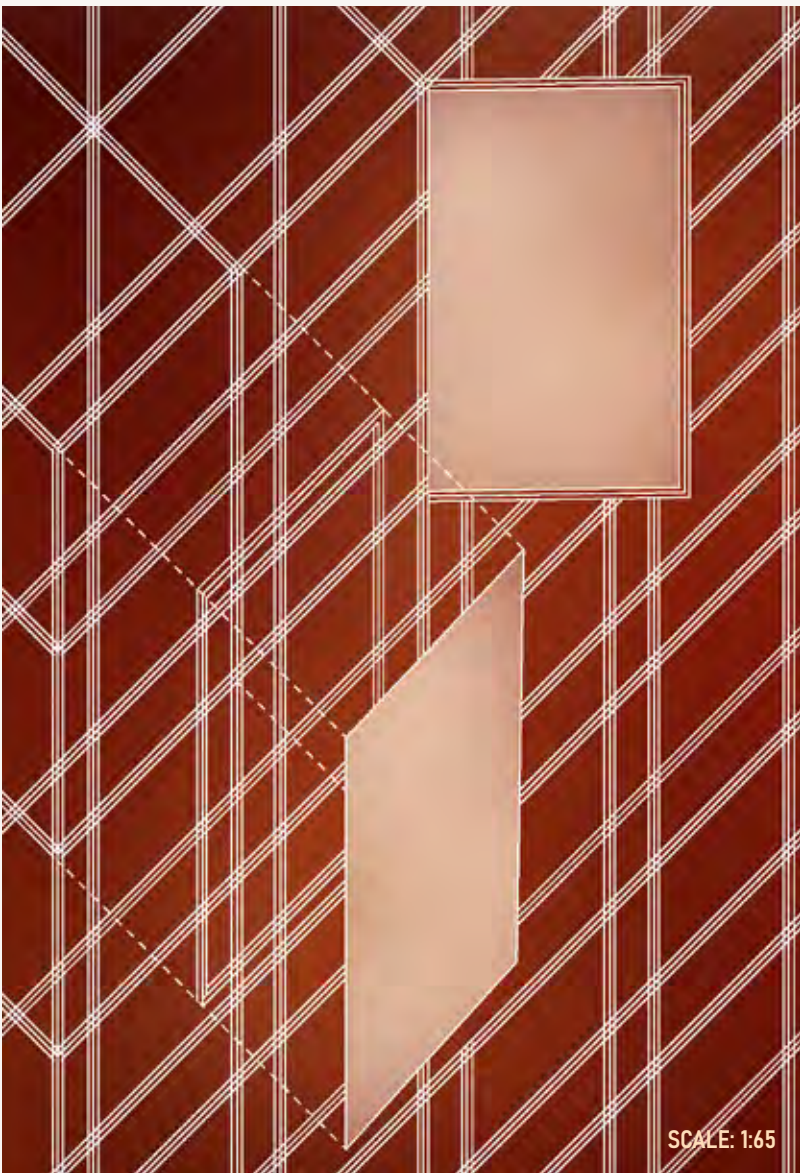
AXO BREAKDOWN

LED LOUVRE SYSTEM - RESPONDING TO SUNLIGHT OF SITE

IDEAL PROGRAMS TO USE WITH

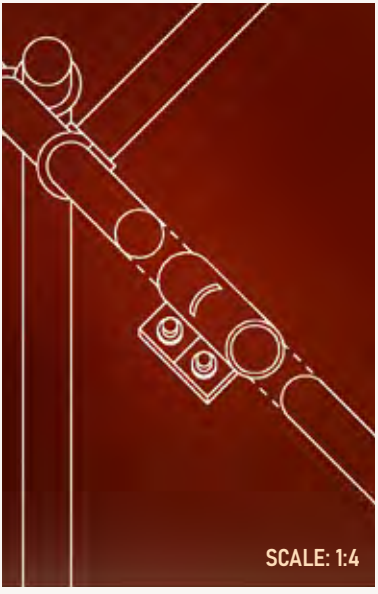
PRIVATE	PUBLIC
- EDITING/ RESEARCH SPACE - SPONSORSHIP TEAM - TRAINING AREA	- TRAFFIC TEAM - SERVER ROOM - WOOD WORKSHOP - PUBLIC LIBRARY - DISCUSSION SPACE - SHARED KITCHEN - LOUNGE AREA

RECLAIMED TUBE + COUPLER SCAFFOLDING SYSTEM



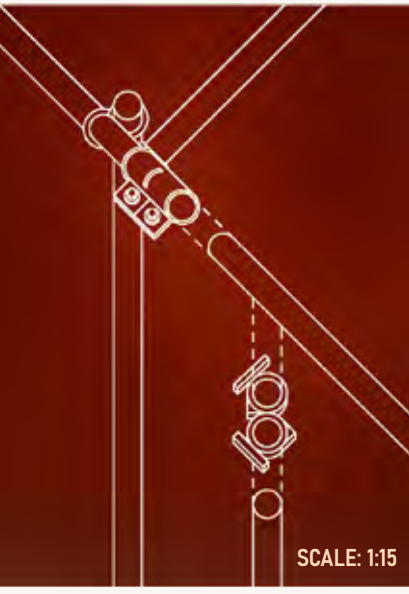
PROJECTION CONNECTION - EXTRUSION + ROTATION

SCALE: 1:65



ATTACHMENT OF SWIVEL COULER

SCALE: 1:4

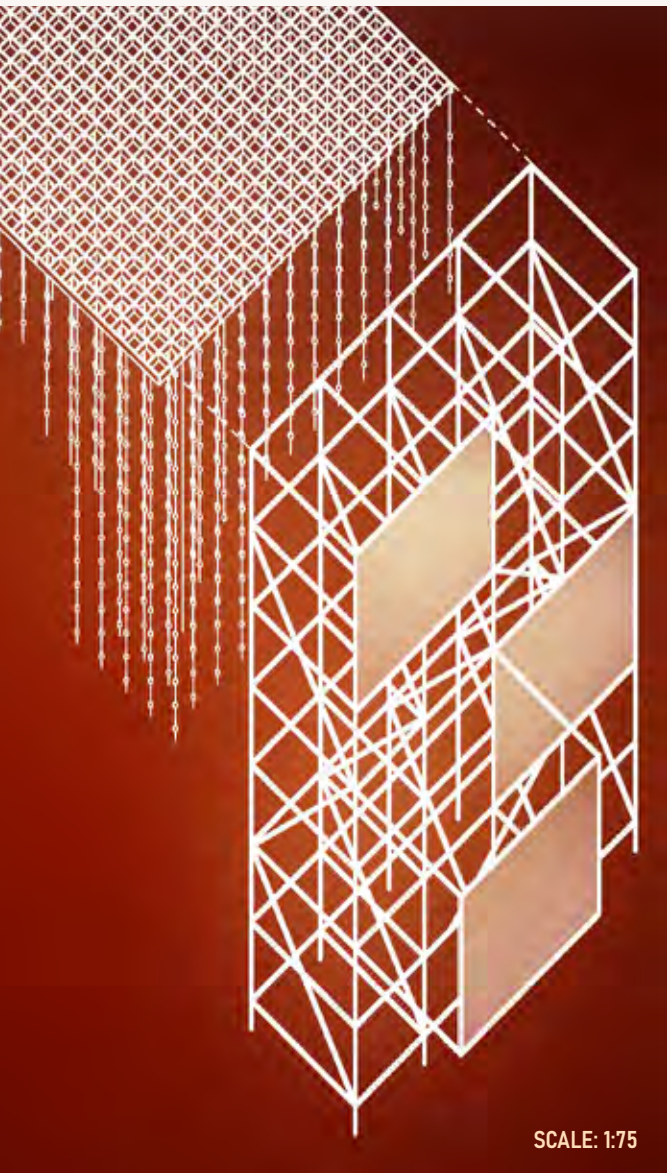


ATTACHMENT OF DOUBLE COUPLER

SCALE: 1:15

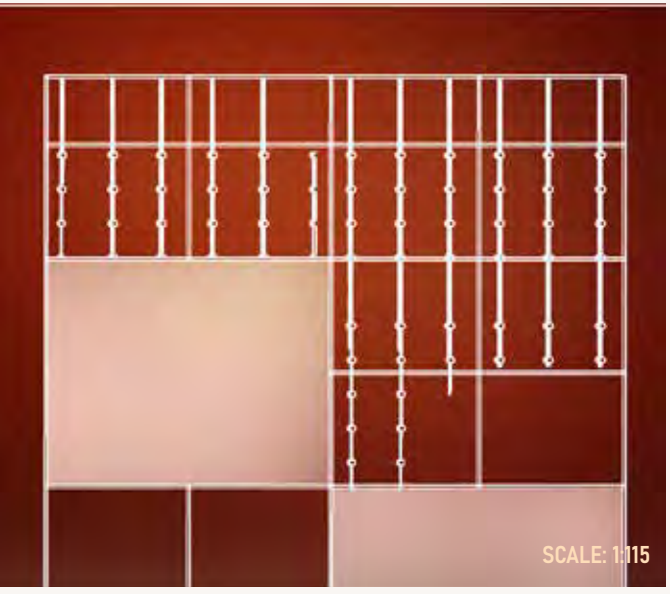
PROJECTION EXTRUSIONS - PROJECTING VISUALISED CO2 + LOCAL ACTIONS

PRIVATE	PUBLIC
- PRACTICE SPACE - PERFORMANCE/ TRAINING AREA	- LOUNGE AREA - DISCUSSION/ VIEWING SPACE



ROOF FRAMEWORK WITH SUSPENDED LED

SCALE: 1:75



FABRIC ATTACHED TO SCAFFOLDING FRAMING SUSPENDED LED

SCALE: 1:115

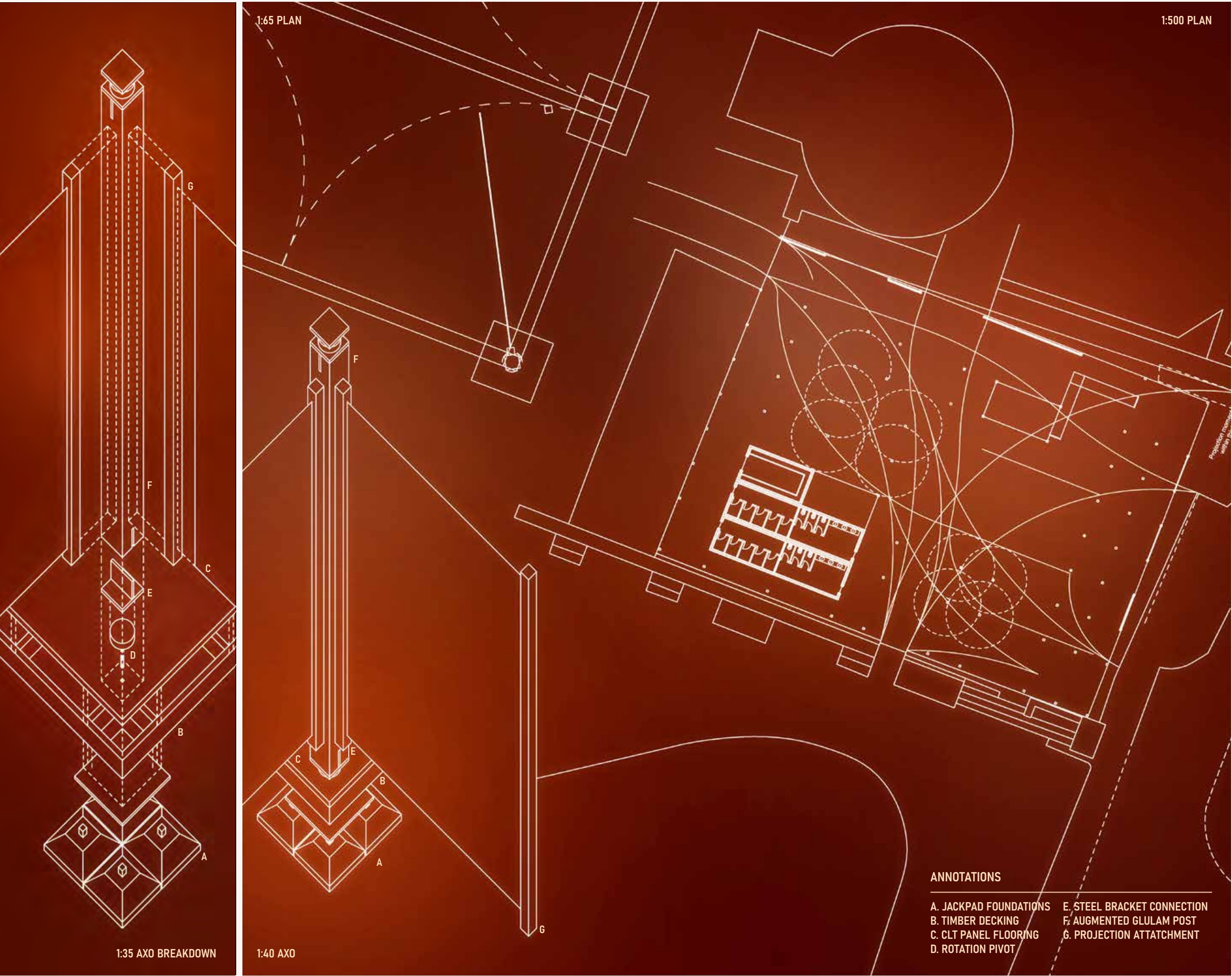
SUSPENDED LED LIGHTING WITH ROOF FRAMEWORK - PROVIDING PHYSICAL PRESENCE OF CO2

PRIVATE	PUBLIC
- PRACTICE SPACE - PERFORMANCE/ TRAINING AREA	- LOUNGE AREA - DISCUSSION/ VIEWING SPACE

EXTERNAL FACADE SYSTEM HOUSING VARIOUS MEHTODS OF VISUALISING CO2

LOCALLY SOURCED SYSTEMS

THE CLIMATE ACTION ASSEMBLY CAN MOVE TO DIFFERENT LOCATIONS ACROSS THE UK AND UTILISE DIFFERENT MODULES AND SCAFFOLDING FROM DIFFERENT SUPPLIERS AND MANUFACTURERS. THIS CAN OVERALL REDUCE THE NUMBER OF MATERIALS THAT ARE TRANSPORTED TO DIFFERENT AREAS IN THE UK AND MAKE THE BASE MORE SITE-SPECIFIC. THE CLOSEST CLT MODULAR FACTORY TO CENTRAL LONDON, IS THE NU-BUILD FACTORY, WHICH IS LOCATED IN BASILDON, ESSEX. THE NU BUILD SYSTEM IS A PREFABRICATED CLT MODULAR SYSTEM THAT IS MAINLY UTILISED FOR HOUSING. THIS SYSTEM WOULD BE USED TO HOUSE THE DIFFERENT PROGRAMS OF THE CLIMATE ACTION ASSEMBLY. THE SCAFFOLDING SYSTEM WOULD BE USED AS THE EXTERNAL FACADE SYSTEM WHICH WOULD HOUSE DIFFERENT INTERVENTIONS THAT VISUALISE CO2 IN THE ATMOSPHERE. ONCE THE CLIMATE ACTION ASSEMBLY IS READY TO MOVE TO A DIFFERENT LOCATION WITH A CLOSER MODULAR FACTORY, THE CLT MODULAR PANELS CAN BE RETURNED TO THE NU BUILD FACTORY AND BE REPURPOSED.



STORA ENSO'S POST + BEAM SYSTEM WITH JACKPAD FOUNDATIONS

SUPPORTING NU-BUILD MODULES FROM THE GROUND FLOOR + HOUSING ROTATING POSTS FOR PROJECTION MOMENTS

AUGMENTED SYSTEMS

THE POST AND BEAM SYSTEM WOULD BE USED TO SUPPORT THE MODULE, TO PROVIDE A GREATER SPAN COMPARED TO THE SCAFFOLDING SYSTEM. THIS MOVE OVERALL LIMITS THE USAGE OF GLULAM WITHIN THE STRUCTURE AND STEEL BRACKETS WITHIN THE STRUCTURE. THE ROTATING POSTS MAKE USE OF THE SPANS BY INCORPORATING PROJECTION SCREENS. THIS USE AIMS TO PROVIDE MORE OPPORTUNITIES TO VISUALISE CO2 IN THE ATMOSPHERE AND PROJECT LOCAL ACTIONS TAKEN FROM THE CLIMATE ACTION ASSEMBLY. THE TRANSLATING LOUVRE PANEL HAS BEEN INVESTIGATED FROM THE CIRCUITRY TO THE FORM AND FRAMEWORK OF THE PANEL. THE LOUVRE PANEL CAN VISUALISE CO2 READINGS OF ITS SURROUNDING ATMOSPHERE.



1:3 PROTOTYPING OF THE TRANSLATING LOUVRE SYSTEM



AN EXPLORATION OF ENVIRONMENTAL NGOS

ALTHOUGH THE CLIMATE ACTION ASSEMBLY CAN BE DEPLOYED IN DIFFERENT REGIONS IN THE WORLD, THIS PROJECT WOULD BE SITUATED IN THE UK, CONSIDERING THERE WAS THE HIGHEST FREQUENCY OF ACTIONS FROM EXTINCTION REBELLION IN CENTRAL LONDON.



MEDIA ORGANISATIONS LOACATED IN SITE

MEDIA OUTLETS

RADIO STATIONS

HEART RADIO

BBC RADIO 2

BBC BROADCASTING HOUSE

CITY A.M. LTD

THE DAILY EXPRESS

TIMES NEWSPAPER

KISS RADIO

MAGIC RADIO

PREMIERE CHRISTIAN RADIO

THE SUN

FINANCIAL TIMES

DAILY TELEGRAPH

RESONANCE FM

INDEPENDENT NEWS

NEWSPAPER PUBLISHER

TV STATIONS

CHANNEL 4

BBC MILLBANK

PANDA TV

STUDIO 8

CNBC

FLAT VISION

VIVOCAST BROADCASTING LIVE

YANDRA TV

ITV [WAREHOUSE SQUARE]

KERFUFFLE TV

ITV

TIN PAN TV

BEST INDIAN TV

MBC

PARAMOUNT UK

BE DO HAVE TV

BBC BROADCASTING HOUSE

This mapping diagram showcases the oversaturation of media organisations in London. This can lead to an overload of information giving the representation of climate change become mixed and conflicting throughout different media outlets.



ORGANISATIONS CONTRIBUTING FOR CLIMATE DISINFORMATION

There is a concentration of organisations that help distribute climate disinformation in the previously chosen site. Therefore, central London can be an ideal site for my strategy as it can reach the most organisations and people.

Adam Smith Institute [ASI]

The ASI has published articles casting doubt on climate science and indirectly opposed green energy, describing solar power in Britain as an 'impossible dream.'

ADAM SMITH INSTITUTE

Media Intelligence Partners

Several of MIP's clients include the TaxPayers' Alliance and the UK's principal climate science denial group, the Global Warming Policy Foundation (GWPF).

MIP

BP PLC

There is existing evidence of the BP organisation funding disinformation campaigns, from reports published by the 'Union of Concerned Scientists'. The evidence consists of leaked internal memos.

bp

UMBRELLA ORGANISATION

The Energy Intensive Users Group

Its members are trade associations representing the UK's most energy-intensive and polluting industries.

EIUC

Institute of Economic Affairs

The IEA was revealed to have received funding from oil giant BP in a 2018 undercover investigation by Unearthed.

iea

BREXIT CLIMATE DENIERS

Global Warming Policy Foundation

Concerns were raised that the foundation was promoting views that were of a political rather than an educational nature.

GWPF

CONSERVATIVE BLOG

TCW Defending Freedom

The CW is closely linked to the anti-BBC and climate science-denying group, News-watch.

TCW

Centre for Policy Studies

The CPS has published work by climate science denier and anti-renewables advocate Rupert Darwall.

Centre for Policy Studies

ConocoPhillips (U.K.) Limited

There is existing evidence of Conoco Phillips funding disinformation campaigns, from reports published by the 'Union of Concerned

ConocoPhillips

TaxPayers Alliance

The group has traditionally opposed government measures to combat climate change

TaxPayers Alliance

Business for Britain

BfB removed an 'Energy Policy' from their website. This suggests that climate change is not a priority for the group.

BUSINESS BRITAIN

Global Vision

Global Vision contributors include individuals from the Global Warming Policy Foundation (GWPF).

Global Vision

CAMPAIGN GROUP

The Freedom Association

Has argued against the Climate Change Act and has held events to discuss ideas opposing the scientific consensus on climate change.

FOR FREEDOM

ORGANISATIONS THAT CONTRIBUTE TOWARDS CLIMATE DISINFORMATION

A COMPILATION OF MAPPING DIAGRAMS LOCATED OF CENTRAL LONDON WHICH HIGHLIGHT THE DIFFERENT STAKEHOLDERS THAT CONTRIBUTE TOWARDS CLIMATE DISINFORMATION AND DISTORT THE CONVERSATION IN CLIMATE CHANGE.



SITE - HUNGERFORD CARPARK [OPPOSITE SHELL REDEVELOPMENT] SOUTHBANK, LONDON

- Shell Building is currently in redevelopment, introducing additional office, retail, and residential areas.
- Regeneration scheme for a site that is "somewhat neglected".
- There was a legal challenge held by writer and activist, George Turner, complaining about the lack of affordable housing and natural daylight, and the impact of views of the South Bank.
- Turner lost the 'Battle of Waterloo', even with the support of local residents + claims there is a possibility that the local government inspector that held the public inquiry was "biased".



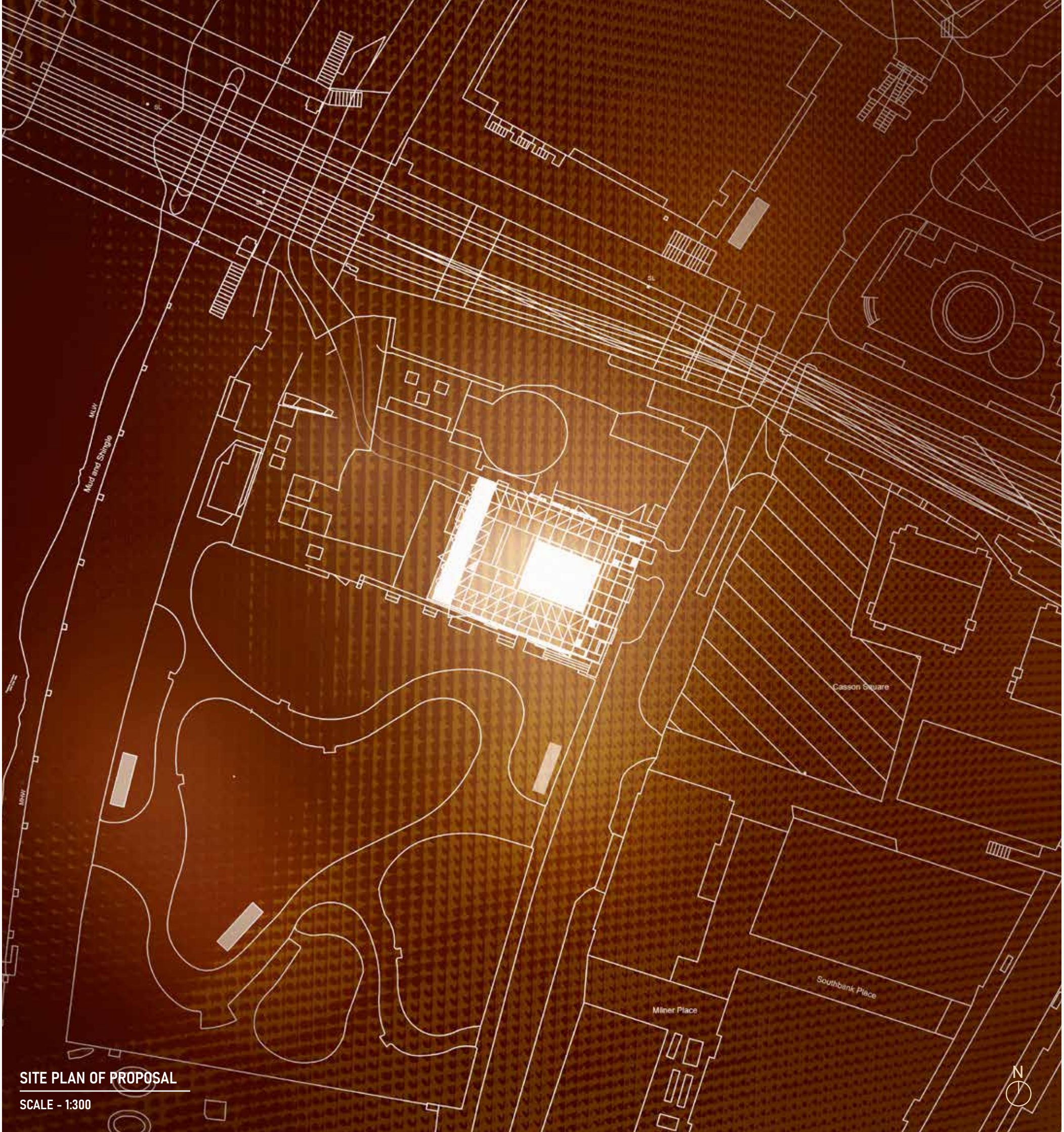
WHAT THE BASE COULD ADD TO THE SITE

- In response to the 'Battle of Waterloo', the community station can also become a platform for activists like George Turner and the local community to be heard + broadcasted
- The station can revitalise the 'neglected' and 'tired' site, and become a hub for local communities in Southbank
- The station can also give local communities a chance to interact + collaborate with different environmental NGOs
- Can redevelop part of the Hungerford car park as a place for local communities
- Reduced usage of cars + promoting cycling from removing car park



WHAT THE SITE CAN OFFER TO THE PROPOSAL

- Location opposite Shell with high foot traffic, central location
- Fits with the overall concept + narrative of standing out and responding to organisations that contribute towards climate disinformation
- In the vicinity of other media outlets/ organisations
- Surrounding site includes a mix of ecologies, gardens, attractions, and the Thames



THE CAA AT SOUTHBANK, LONDON

THIS PAGE IS A COMPILATION OF EARLY RESEARCH PAGES OF THE SPECIFIC SITE OCCUPIED BY THE CLIMATE ACTION ASSEMBLY AND A SITE PLAN OF THE PROPOSAL WHICH SHOWCASES HOW THE STRUCTURE SITS ON THE CHOSEN SITE. THE MAIN FACTORS FOR CHOSSING THIS SITE INCLUDES THE SITE PROVIDING A HIGH FOOT TRAFFIC FROM TOURISTS AND THE SITE BEING SITUATED OPPOSITE THE SHELL CENTRE.



350.ORG
Ending the Age of Fossil Fuels through campaigning.



BIOFUELWATCH
Provide Information, advocacy and campaigning climate change.



CLIMATE ACTION NETWORK
Networking with over 1500 NGO



WILDLIFE CONSERVATION SOCIETY
Conserve the world's largest wild places in 14 priority regions.



WORLD LAND TRUST
Protect and sustainably manage natural ecosystems of the world.



XERCES SOCIETY
Pollinator conservation, endangered species conservation, and reducing pesticide use.



CITIZENS' CLIMATE LOBBY
Creating the political will for climate change solutions.



EARTH CHARTER INITIATIVE
A document with sixteen principles powering a global movement.



FRIENDS OF THE EARTH
Make their communities more climate friendly and fight against climate-wrecking projects.




YOUNG FRIENDS OF THE EARTH EUROPE
Challenge the current model of economic and corporate globalization.




ZOOLOGICAL SOCIETY OF LONDON
An international conservation charity, for wildlife to thrive.




CLIENTEARTH
Environmental charity with using the power of law.




GLOBAL WITNESS
Work to hold companies/ governments to account for their destruction of the environment.




GREENPEACE
Investigating and exposing the causes of environmental destruction.




IDEAS FOR US
Develop ideas scale solutions to the most pressing environmental challenges.



COASTWATCH
An international network of environmental groups, universities and other educational institutions.



NATIONAL CLEAN-UP DAY
An organisation that holds a national annual event, requiring people to clean litter in their town.



STAND.EARTH
Campaigns that challenge destructive corporate and governmental practices, demanding accountability.



INTERNATIONAL RIVERS
Protects rivers and defends the rights of communities that depend on them.



LET'S DO IT! WORLD
A movement that mobilises positive-minded people to participate in local and global actions.



RAINFOREST ACTION NETWORK
Preserves forests, challenging corporate power.



ENDE GELAEENDE
Alliance of people from the anti-nuclear and anti-coal movements and campaigning.



SEA SHEPHERD CONSERVATION SOCIETY
Campaigns to defend wildlife and conserve and protect world's oceans.



EXTINCTION REBELLION
Holding campaigns, workshops, and online events globally, fighting for truth.



RAINFOREST ALLIANCE
Building an alliance to protect forests, improve the livelihoods of farmers and forest communities.



RAINFOREST FOUNDATION
Campaign to influence national and international laws, protecting rainforests.



SANDWATCH
Develop awareness of the fragile nature of the marine and coastal environment.




SEEDING SOVEREIGNTY
Dismantling systems of oppression, and reclaiming stewardship of our waterways/resources.




SLC AIR PROTECTORS
Holding protests and campaigns advocating for indigenous sovereignty.




BIONEERS
Holding conferences and events to connect people for climate change action.




THE CLIMATE REALITY PROJECT
Initiative, making urgent action a necessity across every sector of society.




THE NATURE CONSERVANCY
Conserve the lands and waters on which all life depends.




WILD FOUNDATION
Mobilizing international coalitions for the protection of wilderness.



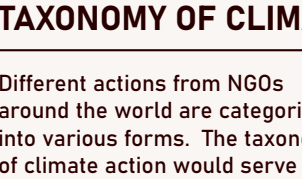
OCEANSGLOBAL
Helping people create healthy lifestyles from therapeutic water-based activities.




CHISPA
Organizing communities and increasing voter participation, pushing back on polluters.



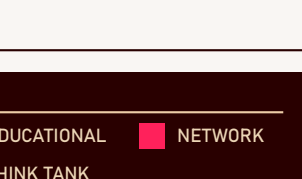
THE ALLIANCE OF CLIMATE EDUCATION
Educating young people about climate issues, activating action.



BLACK BELT CITIZENS FIGHTING FOR HEALTH AND JUSTICE
Assisting in scientific research, coordinating legal strategies, and hosting media.



CLIMATE OUTREACH
Holding workshops to communicate climate change emergency more effectively.



FRIDAYS FOR FUTURE
Holding organised global climate strike movement, raising urgency of climate change issue.

TAXONOMY OF CLIMATE ACTION

Different actions from NGOs around the world are categorised into various forms. The taxonomy of climate action would serve as the basis for how the different programs for the climate action assembly is derived.

ACTION KEY		
CONSERVATION/ PROTECTION	EDUCATIONAL	NETWORK
CHARITY	THINK TANK	
CAMPAIGN	MOVEMENT	

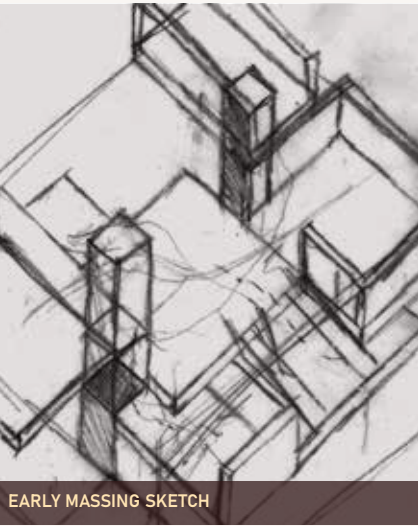
CREATING CLIMATE ACTION SYNERGY



CREATING CLIMATE ACTION SYNERGY

PRINCIPLES OF CLIMATE ACTION SYNERGY

- THE STRUCTURE SHOULD NOT BE FOR JUST ONE GROUP
- STRUCTURE MUST HAVE MULTIPLE AMBITIONS, SYNTHESISING DIFFERENT/ COMBINED ACTIVITIES
- MUST INITIATE SOCIAL INTERACTION
- HAVE THE POTENTIAL TO OPEN UP TO UNKNOWN ACTIVITIES FROM NGOS
- BECOME AN ENVIRONMENT THAT CONTINUALLY INTERACTS AND RESPONDS TO PEOPLE
- ALLOW A CONTINUOUS PROCESS OF CONSTRUCTION, DISMANTLING, AND REASSEMBLY
- CONSIDER ITSELF BEYOND A TYPICAL ENCLOSURE



All Programs	NGO Spaces	NGO + Public
Key Spaces		
Central Discussion Space		
Library/ Research Space		
Workshop Space		
Lounge Area		
Service Space		
Shared Kitchen		
Toilets		
Changing Rooms		
Office Space		
Management Team		
Traffic Team		
Financial Team		
Sponsorship Team		
HR Team		
Editorial Team		
Research Team		
Meeting Room		
OVERALL PROGRAMS OF THE CLIMATE ACTION ASSEMBLY		

KEY PROGRAMS OF COMMUNITY MEDIA STATION

DISCUSSION SPACE +
TV/RADIO RECORDING STUDIO +
TRAINING ROOM [FOR GROUPS LIKE
EXTINCTION REBELLION]

- A SPACE FOR NGOS + THE PUBLIC TO OPENLY
DISCUSS THEIR FINDINGS AND COLLABORATE TO
FORM NEW IDEAS FOR CLIMATE ACTION



LIBRARY/ RESEARCH SPACE

- A SPACE FOR NGOS AND THE PUBLIC TO
RESEARCH, ESTABLISH NEW FINDINGS

- PROVIDES INFORMATION FOR COMMUNITIES TO
UNDERPIN THEIR OWN CLIMATE ACTION



WORKSHOP SPACE

- PROVIDING NGOS LIKE EXTINCTION REBELLION,
A SPACE TO CREATE THEIR BANNERS/ ATWORKS/
STRUCTURES

- WORKSHOP WOULD ALSO BE OPEN TO THE PUBLIC
FOR COLLABORATION



EDITORIAL + REPORTERS ROOM
+ CONTROL ROOM

- PROVIDING NGOS LIKE DESMOG A SPACE TO
OPERATE NORMALLY

- ALSO PROVIDES PROGRAMMES NEEDED TO RUN A
COMMUNITY TV/ RADIO STATION



TRANSLATION SPACES

- ALLOWS GROUPS LIKE ' THE CLIMATE MUSIC
PROJECT' TO TRANSLATE CLIMATE DATA OF THE UK IN
TO MUSIC + VISUALS

- COULD HAVE DIFFERENT SIZED SPACES
DISTRIBUTED THROUGHOUT THE STRUCTURE,
DEPENDENT ON HOW THE DATA/ INFORMATION IS
TRANSLATED

- THE TRANSLATION PROCESS CAN ALSO UTILISE
THE SPACES PREVIOUSLY MENTIONED



THE TAXONOMY OF CLIMATE ACTION SHOWCASES HOW DIFFERENT NGOS OPERATE AND HELPS DERIVE KEY PROGRAMS THAT DIFFERENT NGOS CAN UTILISE IN THE BASE. SOME OF THE PROGRAMS CAN ALSO PROVIDE OPPORTUNITIES TO OPERATE WITH THE PUBLIC. THIS COULD OVERALL HELP FORM SYNERGY WITH THE PUBLIC AND THE ENVIRONMENTAL NGOS.



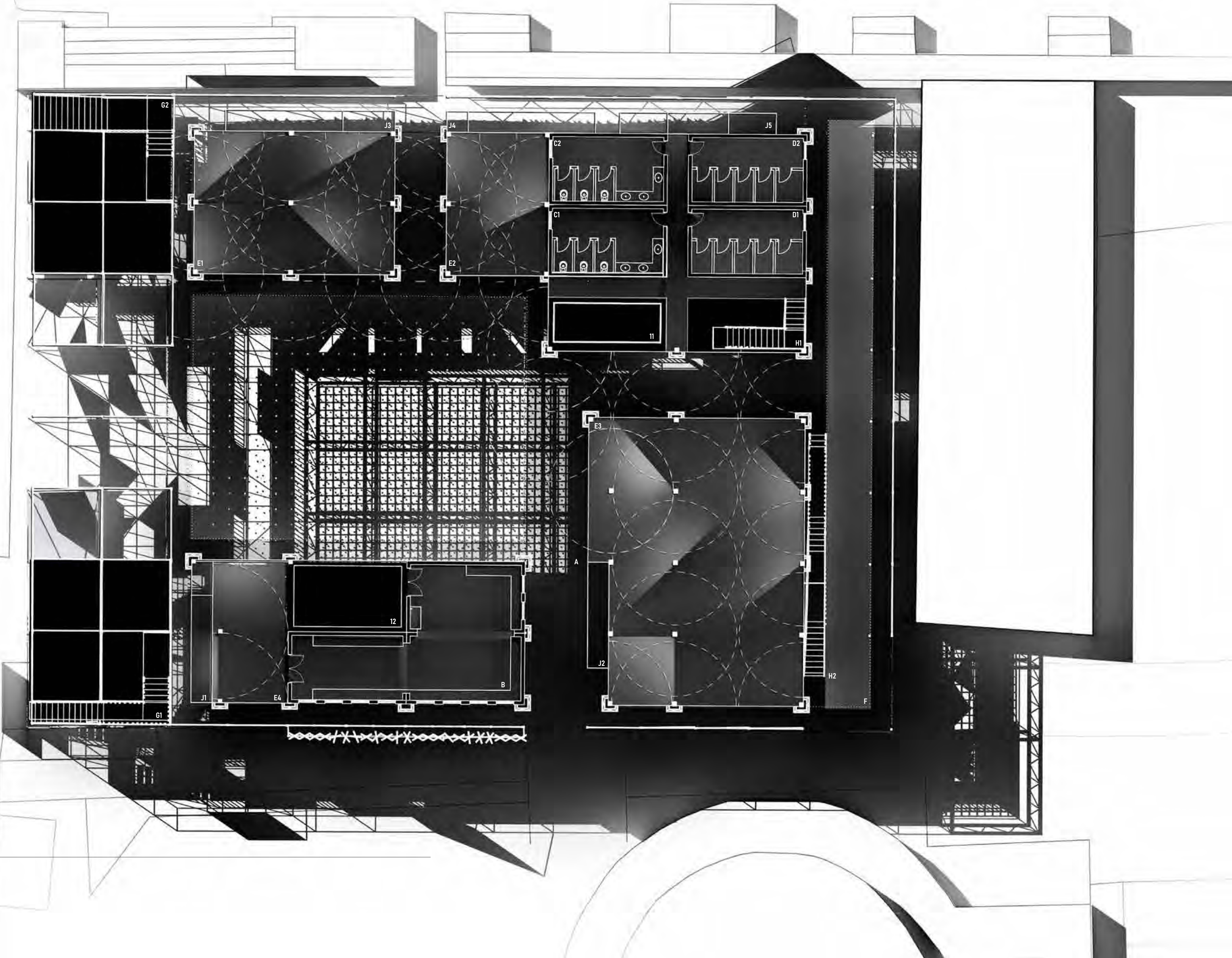
PLAN - GROUND FLOOR

SCALE - 1:150



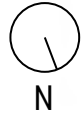
ANNOTATIONS

PROGRAMS	ACCESSIBILITY
A. DISCUSSION SPACE	G. EXTERNAL FACADE
B. STORAGE AREA	SYSTEM STAIRS
C. COMPOST TOILETS	H. STAIRS
D. CHANGING ROOMS	I. PULLEY SYSTEM WITH
E. POST ROTATION SYSTEM	LIFTING PLATFORM
F. REAR ZONE	J. RAMPS



PLAN - FIRST FLOOR

SCALE - 1:150



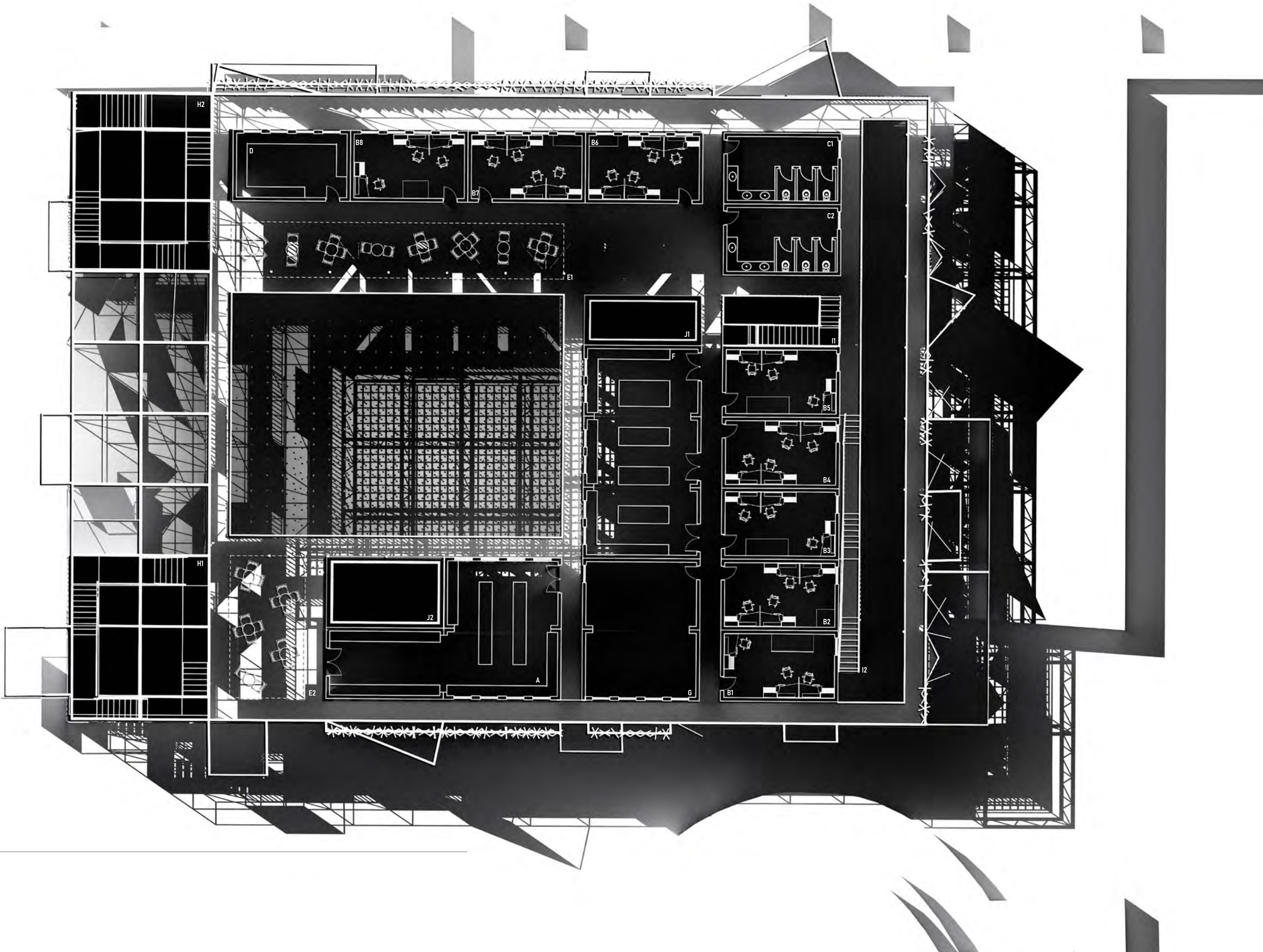
ANNOTATIONS

PROGRAMS

- A. LIBRARY
- B. OFFICE SPACE
- C. COMPOST TOILETS
- D. SHARED KITCHEN
- E. LOUNGE AREA
- F. WOOD WORKSHOP
- G. TRAINING ROOM

ACCESSIBILITY

- H. EXTERNAL FACADE SYSTEM STAIRS
- I. STAIRS
- J. PULLEY SYSTEM WITH LIFTING PLATFORM



PLAN - SECOND FLOOR

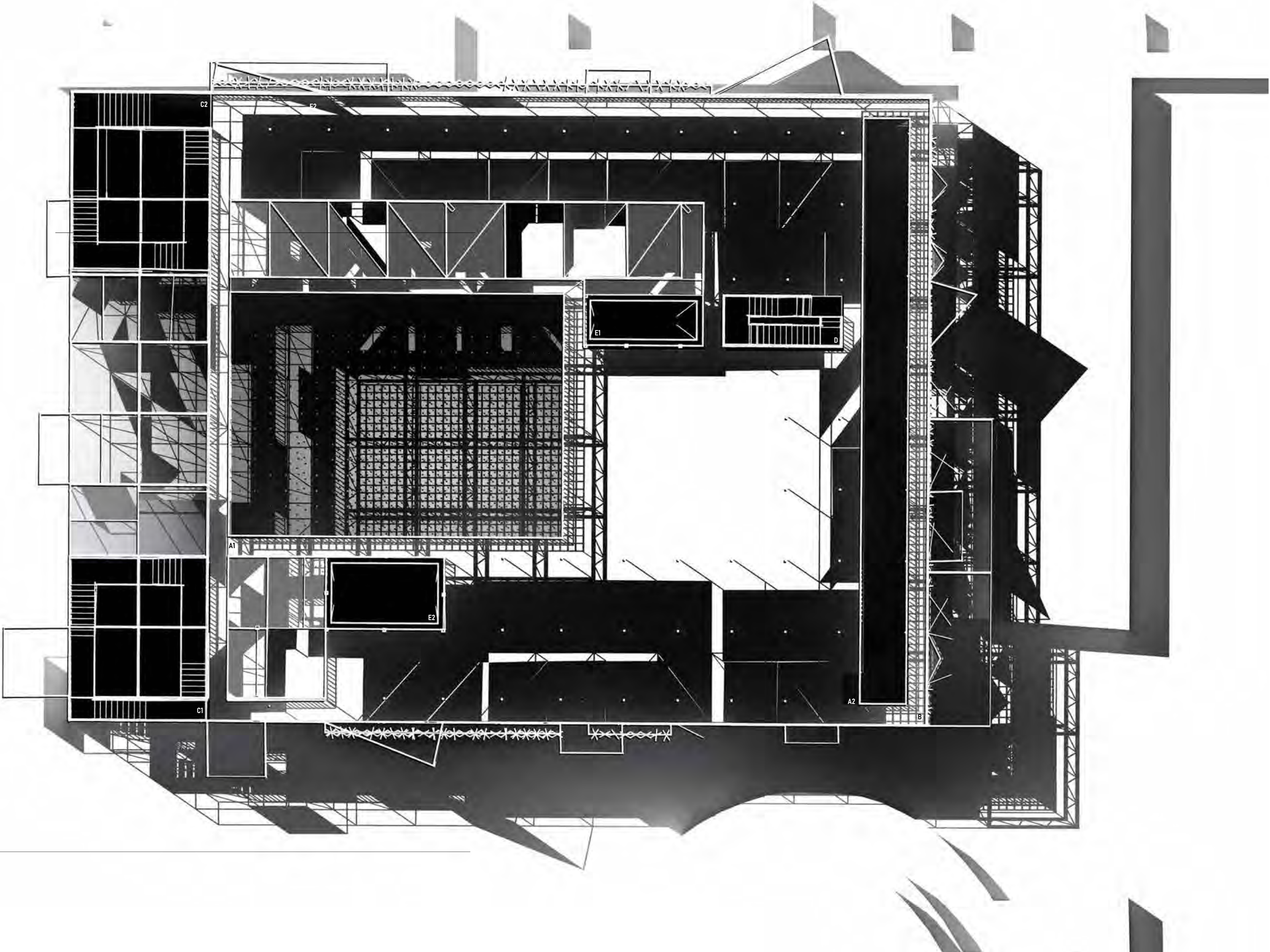
SCALE - 1:150

ANNOTATIONS

- PROGRAMS

 - A. ROOF FRAMEWORK + MAINTENANCE
 - B. VIEWING AREA
- ACCESSIBILITY

 - C. EXTERNAL FACADE SYSTEM STAIRS
 - D. STAIRS
 - E. PULLEY SYSTEM WITH LIFTING PLATFORM

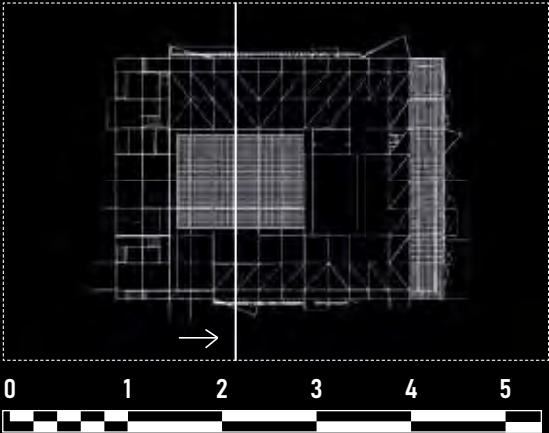


TRANSVERSAL
SECTION



ANNOTATIONS

EXTERNAL FACADE SYSTEM	NU-BUILD MODULES	POST + BEAM SYSTEM
A. TRANSLATING LOUVRE SYSTEM	G. DISCUSSION SPACE	K. ROTATION SYSTEM
B. ROOF FRAMEWORK FOR SUSPENDED LED	H. LIBRARY	L. JACKPAD FOUNDATION
C. SUPPORTING STEEL TRUSS	I. STORAGE SPACE	M. FABRIC ATTATCHMENT
D. PROJECTION SYSTEM	J. MAINTENANCE + VIEWING AREA	
E. PULLEY SYSTEM		
F. STAIRS		

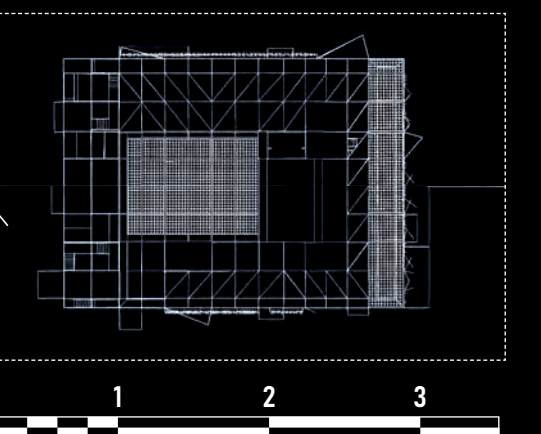


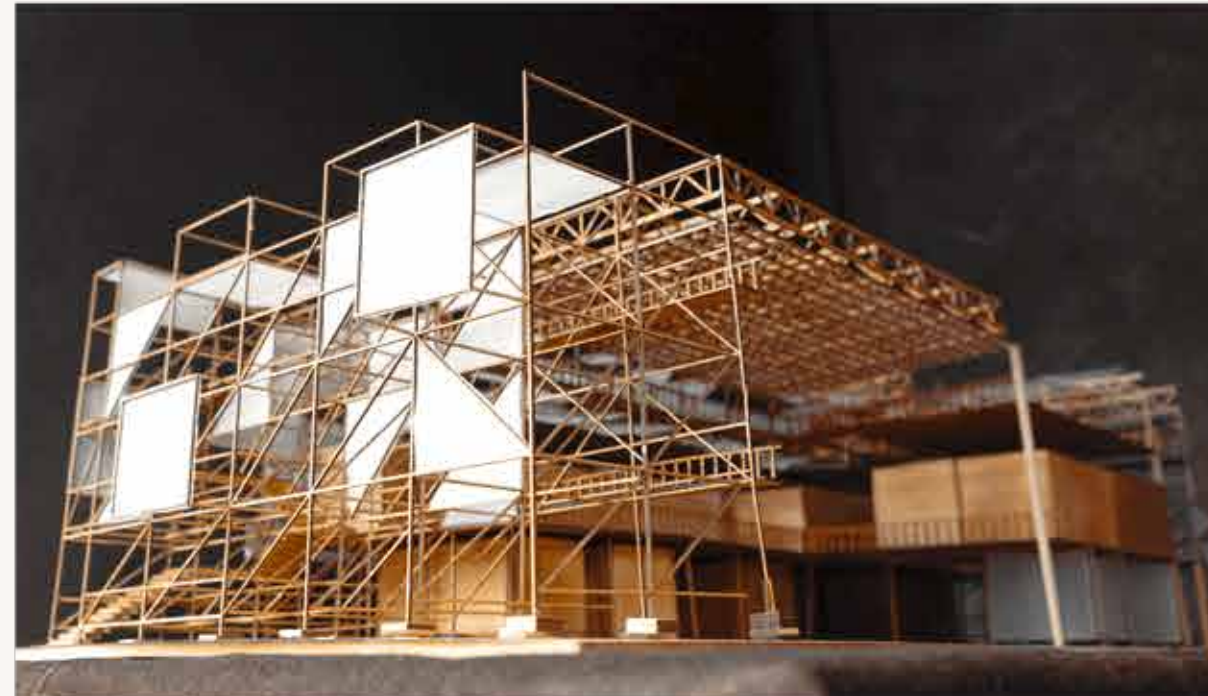
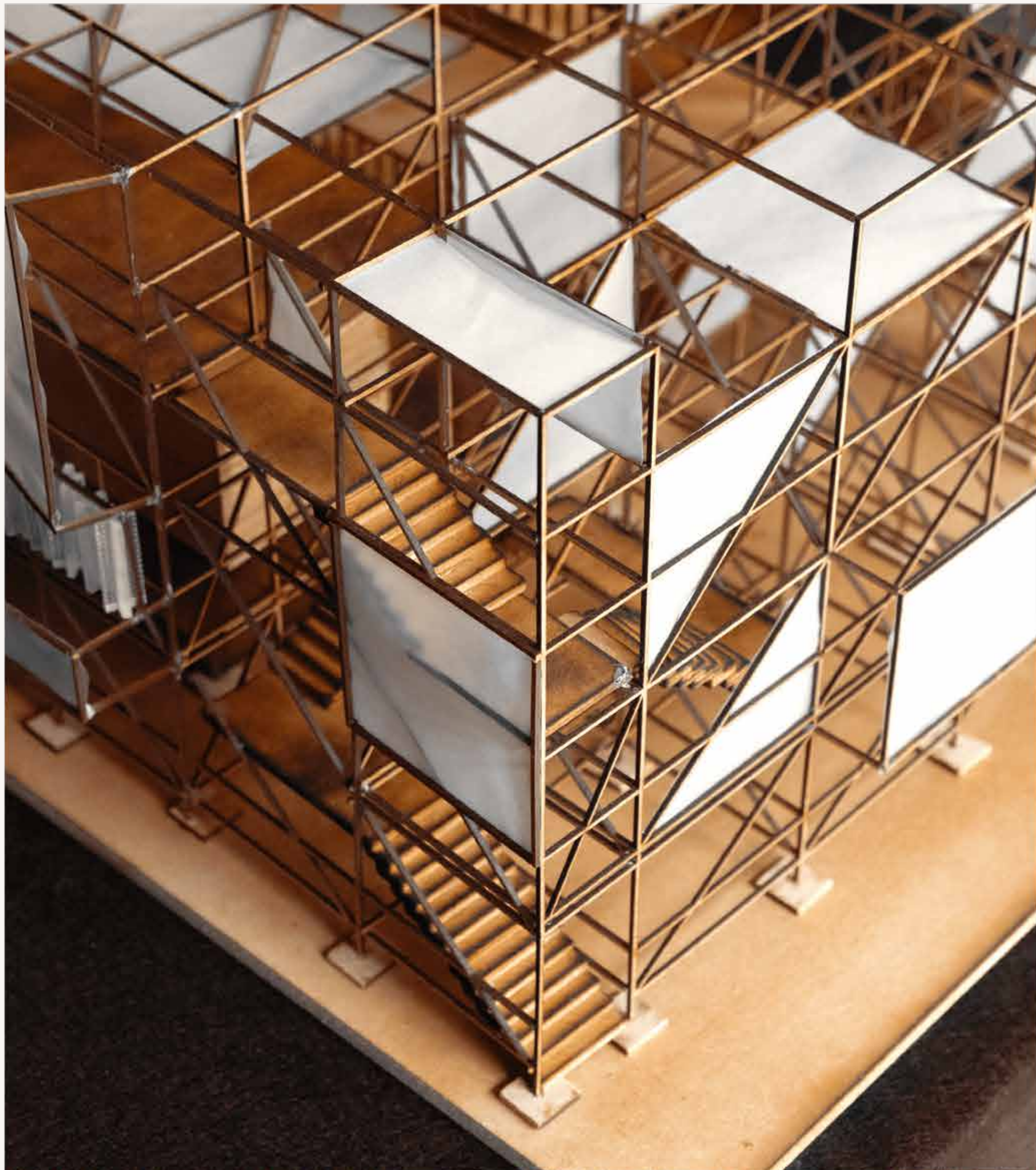
LONGITUDINAL SECTION



ANNOTATIONS

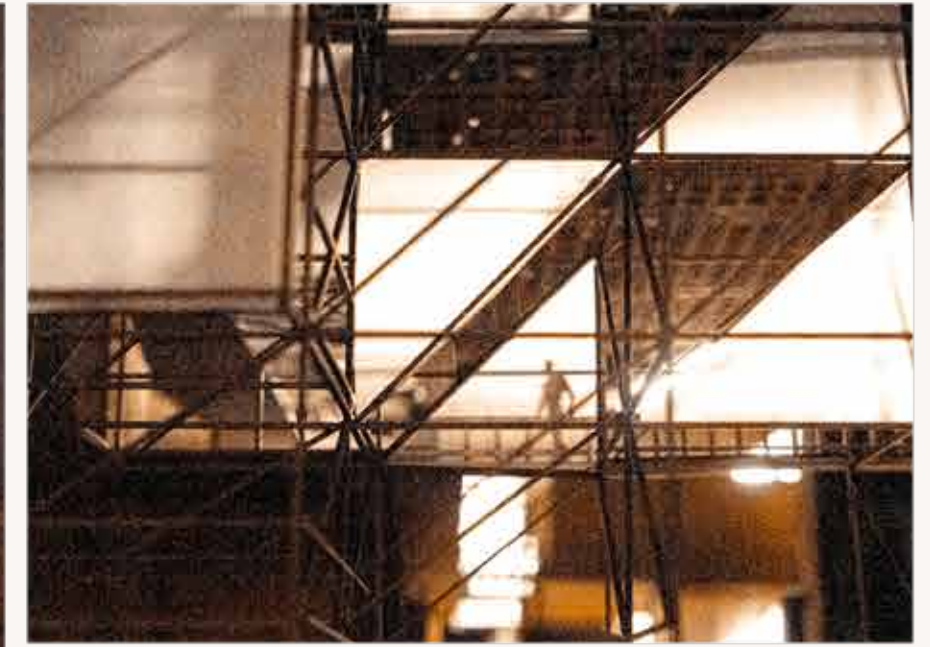
EXTERNAL FACADE SYSTEM	NU-BUILD MODULES	POST + BEAM SYSTEM	PROGRAMS
A. TRANSALTING LOUVRE SYSTEM	H. OFFICE SPACE	D. JACKPAD FOUNDATION	S. DISCUSSION SPACE
B. ROOF PL. WORK	I. WORKSHOP SPACE	E. FABRIC ATTACHMENT	T. LOBBY AREA
C. SUSPENDED LED	J. RAINSCREEN FACADE	F. STEEL BRACKET CONNECTION	U. MAINTENANCE/ VIEWING SPACE
D. SUPPORTING STEEL TRUSS	K. RIGID INSULATION	R. GLULAM POSTS	
E. PROJECTION SYSTEM	L. WATER VAPOUR		
F. PULLEY SYSTEM	M. PREFABRICATED CLT PANELS		
G. STAIRS	N. STEEL BRACKET CONNECTION		





THE CAA
1:50 SECTIONAL MODEL

THIS PAGE IS A COMPILATION OF PHOTOS TAKEN OF THE 1:50 SECTIONAL MODEL. THIS MODEL PHYSICALLY SHOWCASES THE FORM AND FRAMEWORK OF THE DIFFERENT SYSTEMS USED FOR THE CAA. PROJECTION SCREENS AND LOUVRE PANELS ARE HIGHLIGHTED THROUGHOUT THE MODEL. THE PHOTOS TAKEN ONLY UTILISES THE NATURAL LIGHT IN THE STUDIO.



THE CAA
1:50 SECTIONAL MODEL

DIRECTIONAL LIGHTING WAS USED FOR THE FOLLOWING COMPILATION OF PHOTOS, THE STRONG LIGHTING HIGHLIGHTS THE PROJECTION SCREENS, AND LOUVRE PANELS IN THE MODEL. INHABITATION SITUATED IN THE MODEL IS ALSO EFFECTIVELY HIGHLIGHTED.



THE CAA
1:50 SECTIONAL MODEL

LED LIGHTS WERE USED FOR THE FOLLOWING COMPILATION OF PHOTOS. THESE HIGHLIGHT MULTIPLE AREAS OF THE MODEL AND CREATE A GLOWING EFFECT FOR THE 1:50 MODEL. THIS WOULD BE SIMILAR TO THE EFFECT OF HOW PROJECTIONS COULD LIGHT UP THE OVERALL STRUCTURE.



**STOP FUNDING
CLIMATE KILLERS!**
GREENPEACE

**CLIMATE
EMERGENCY**

**CHANGE
IS
COMING**

**STAY
OUT!**



LOVE & PROTECT
OUR
BEAUTIFUL EARTH



...S HAPPENING

ACT NOW
For Our Grandchildren
www.eldersclimateaction.org







