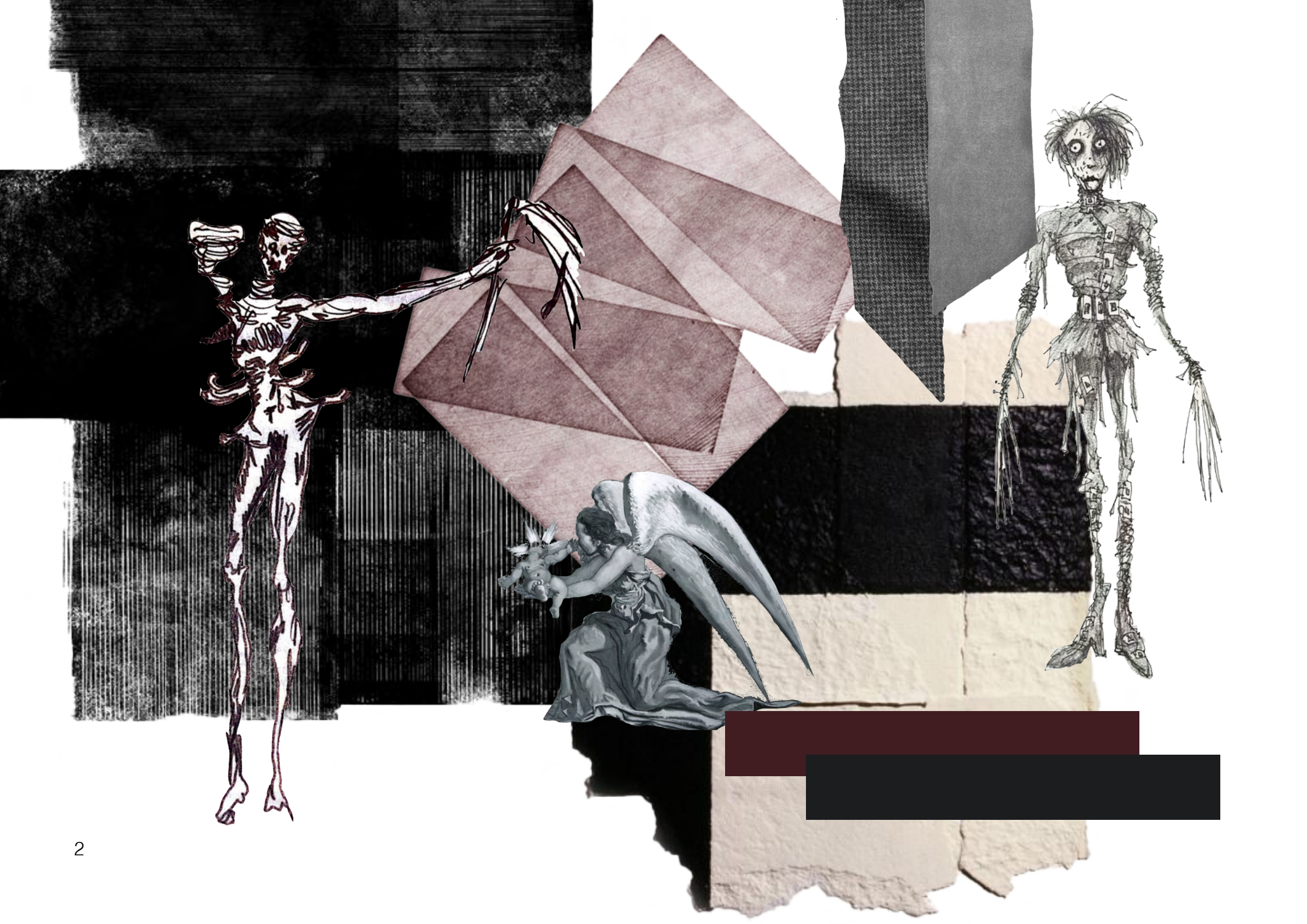


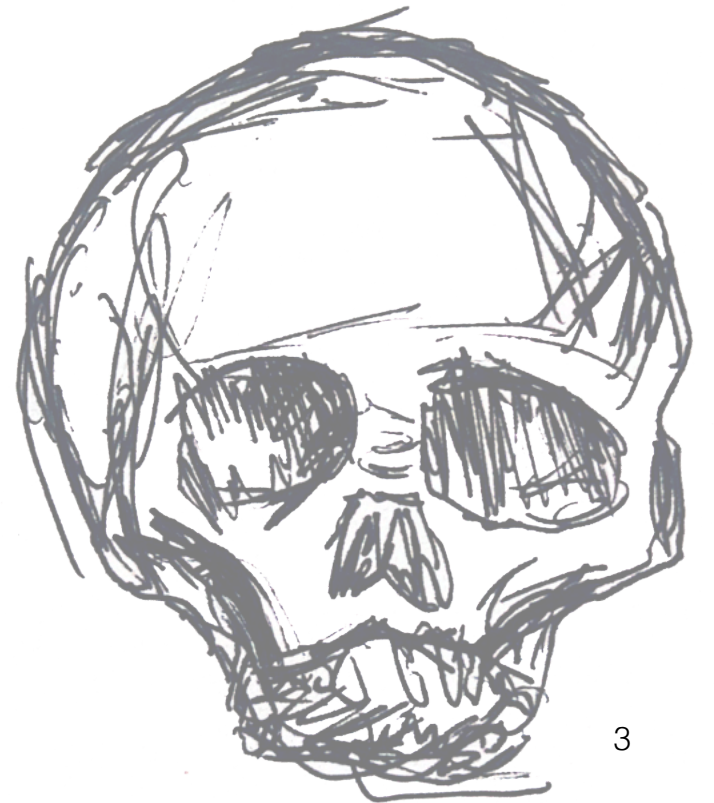
M E M E N T 
M  **R I**

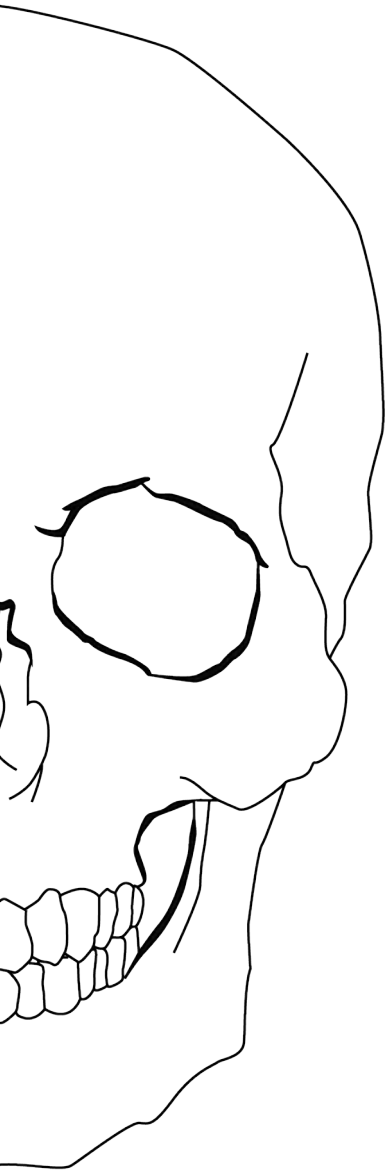


Lauren Venus

laurenvenus.lv@gmail.com







memento mori

(phr.) “*remember that you will die*”; a reminder
of mortality or the inevitable transformation
of life into death







I



II



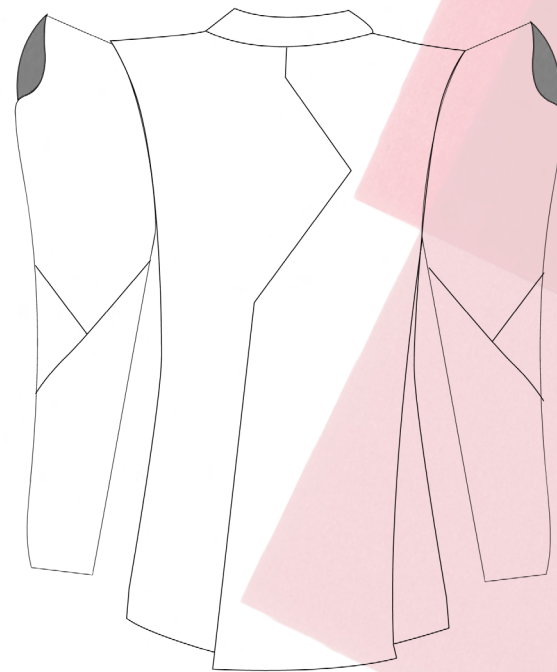
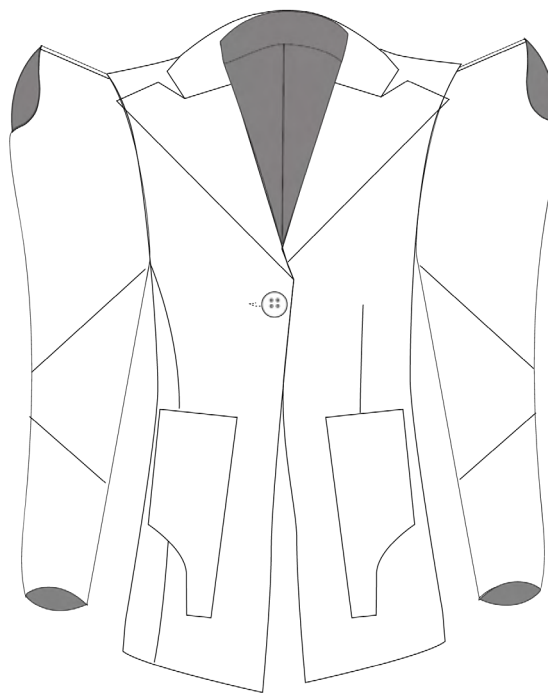
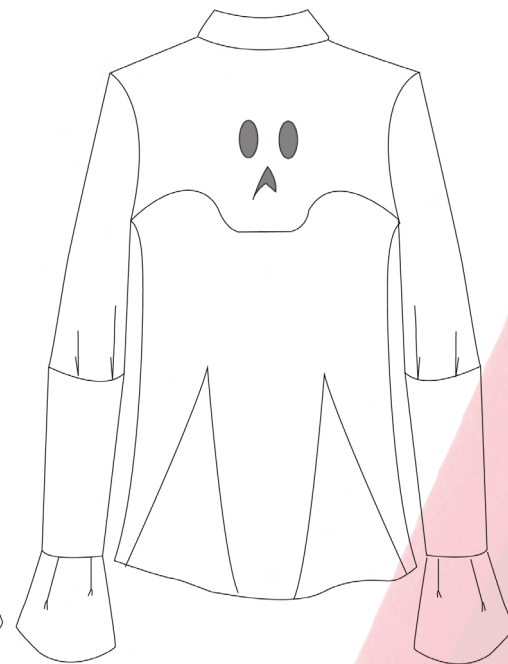
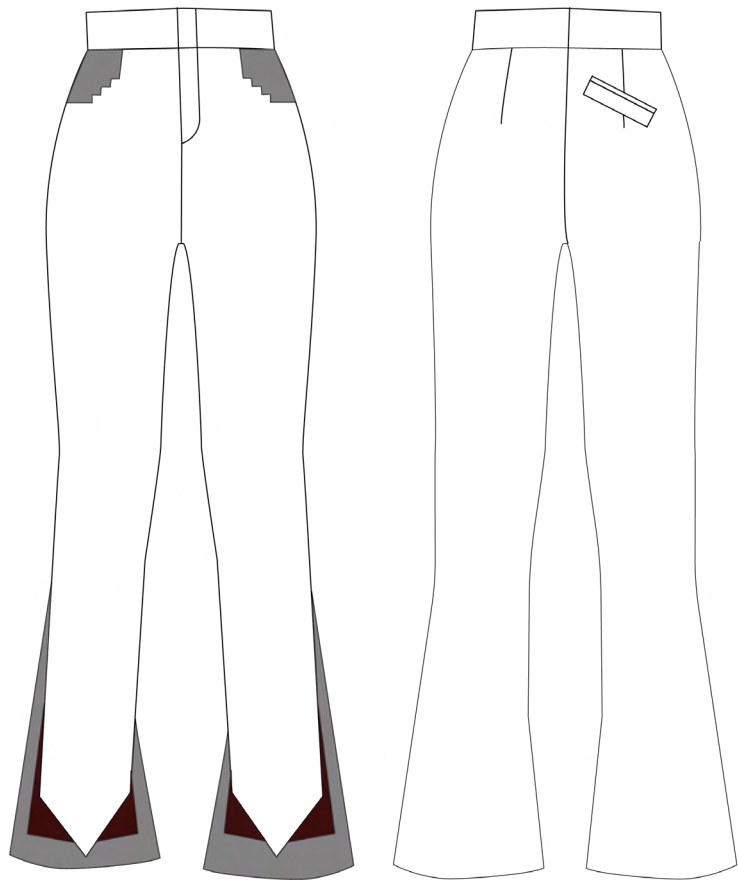
III



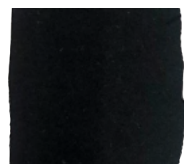
IIII

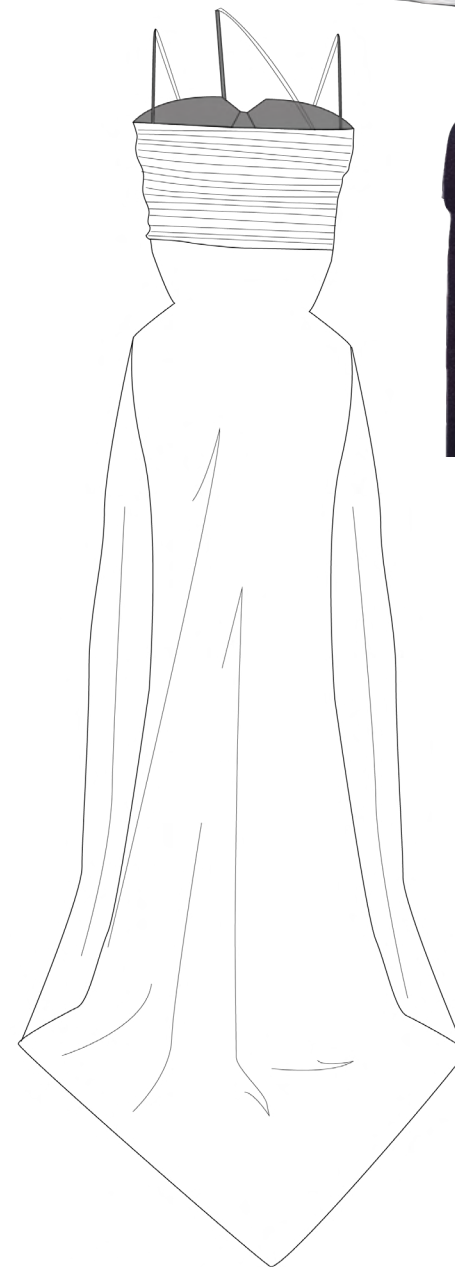
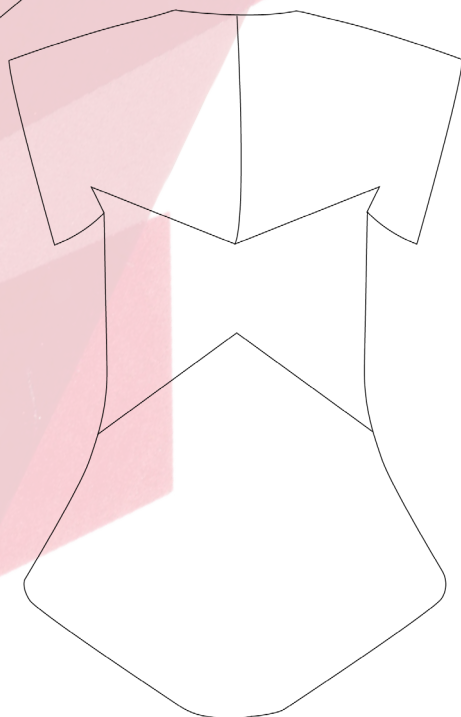
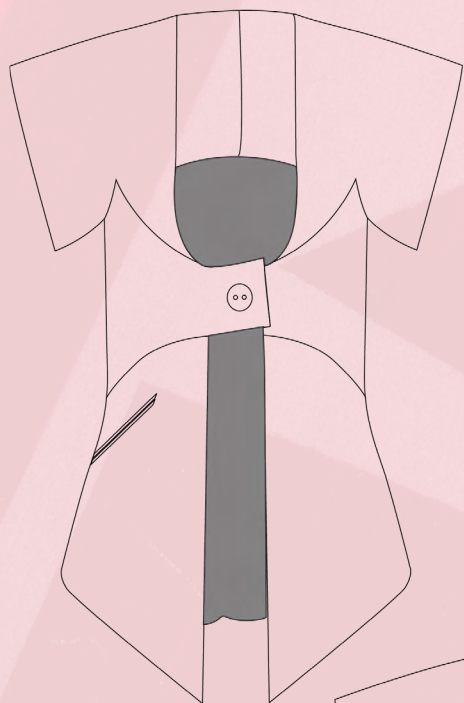


V



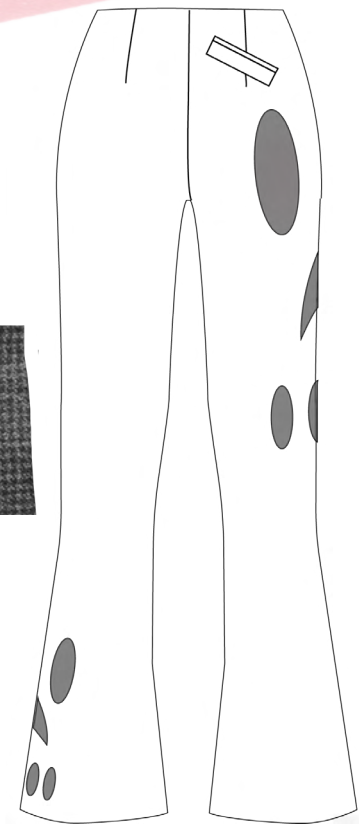
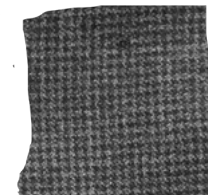
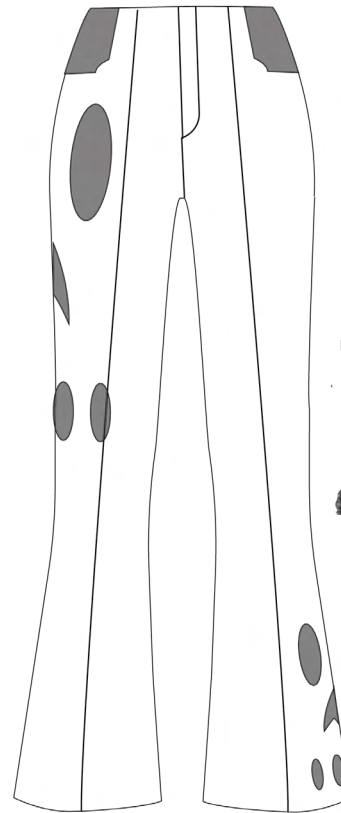
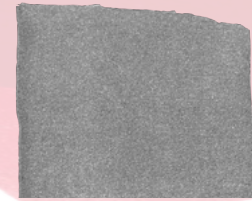
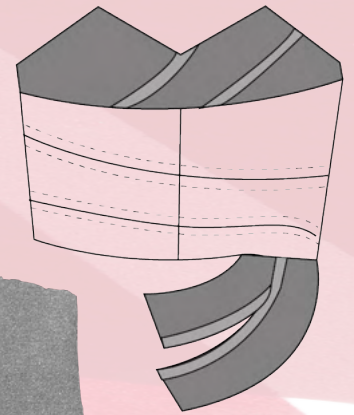
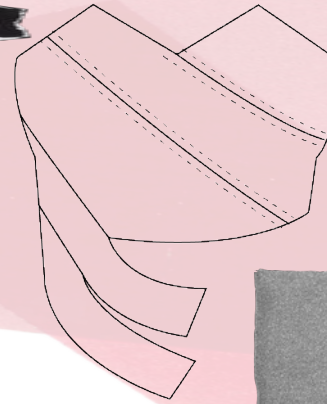
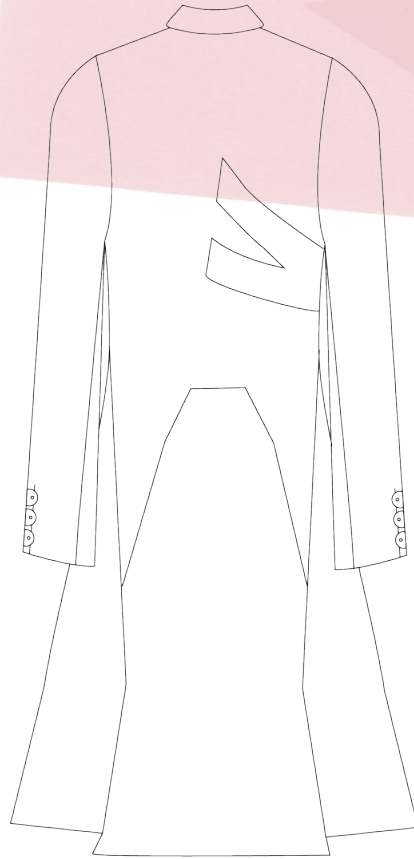
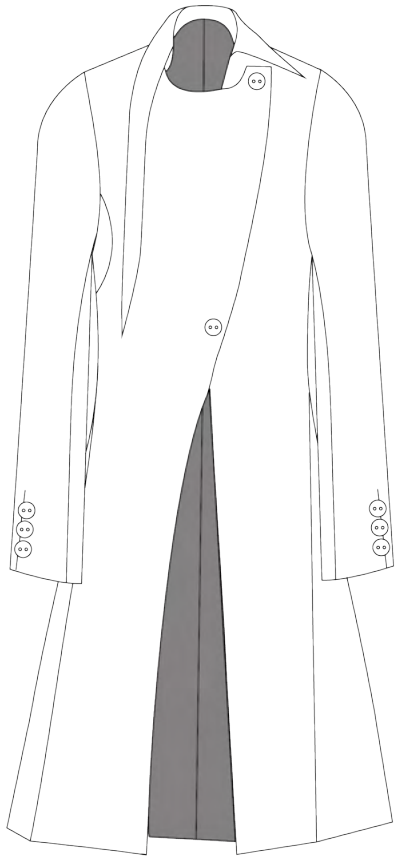
LK 1.

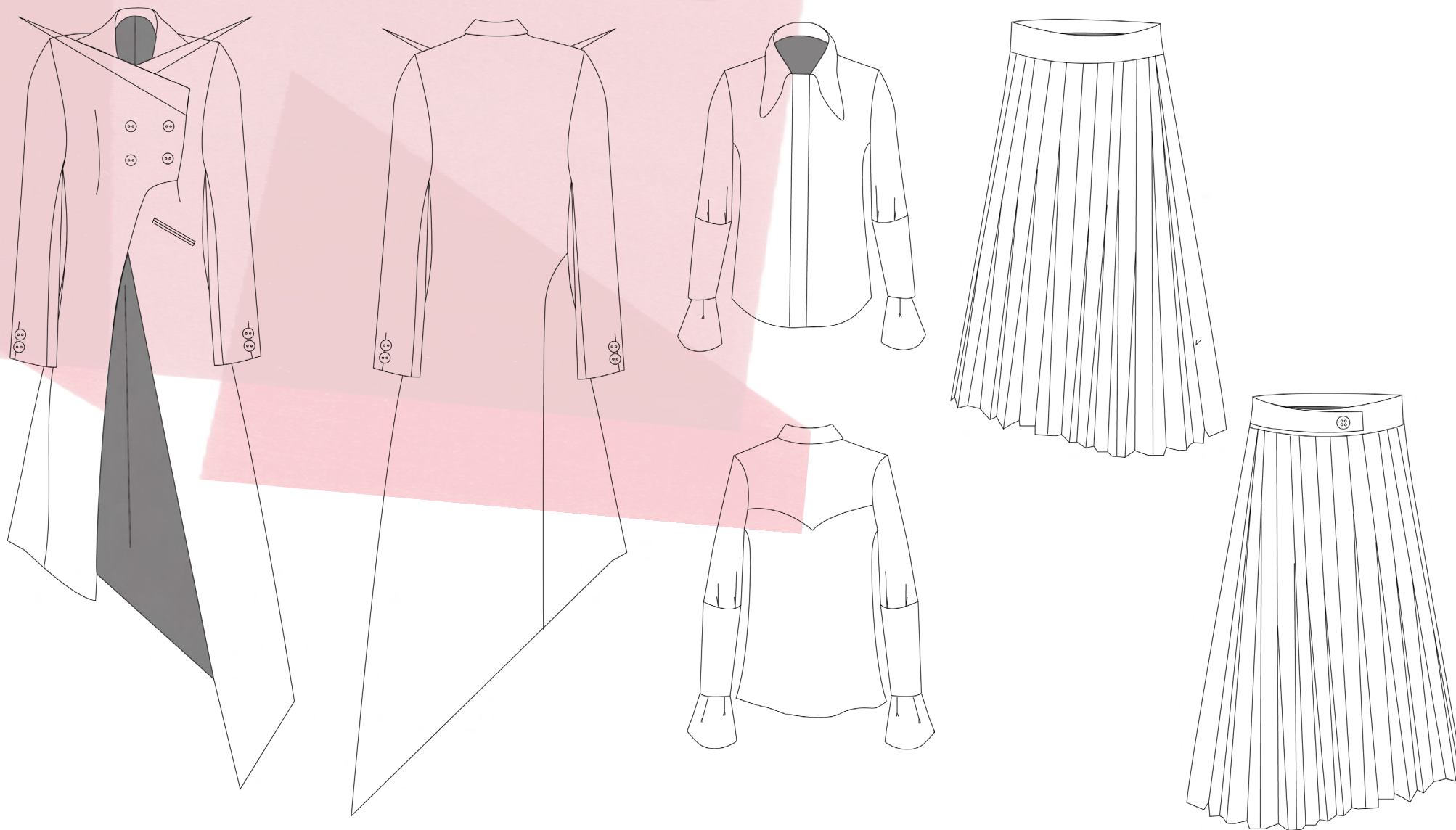




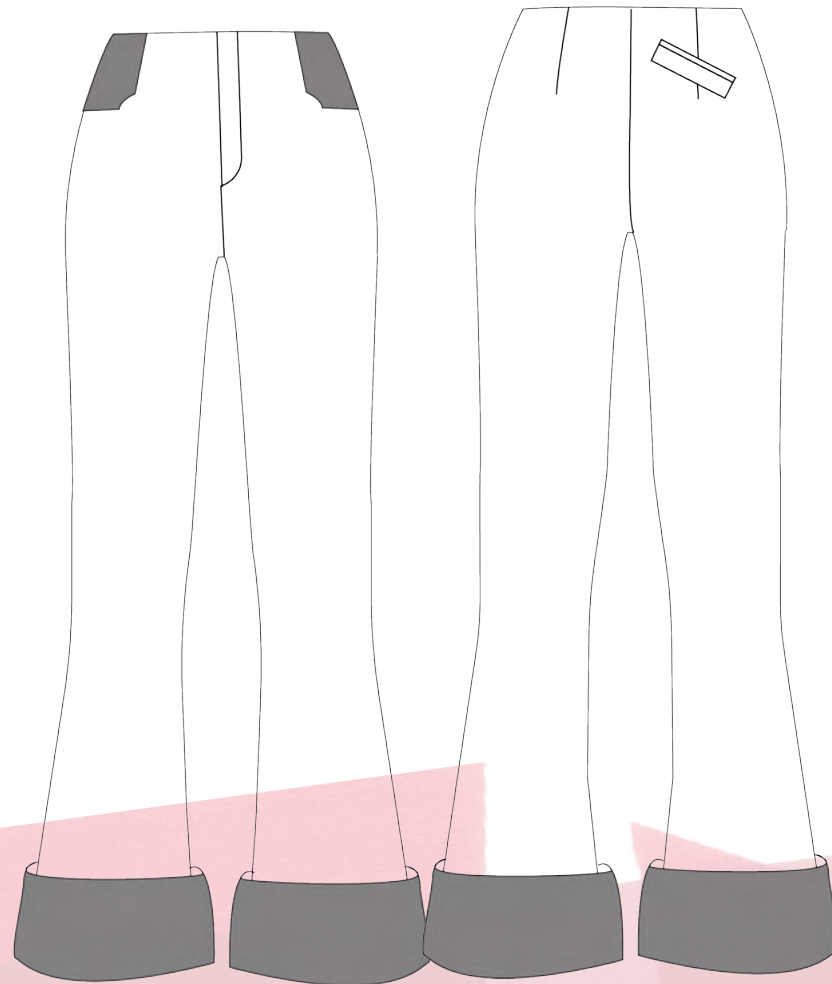
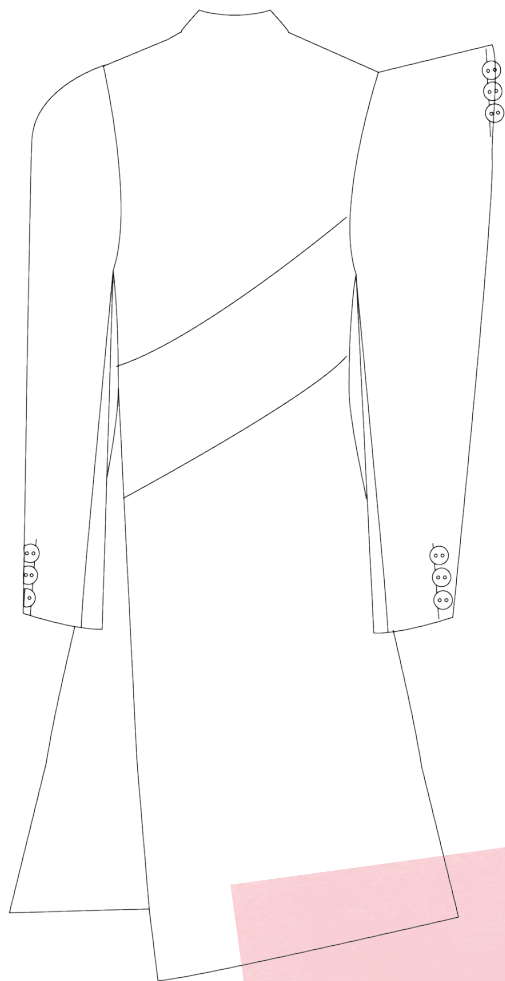
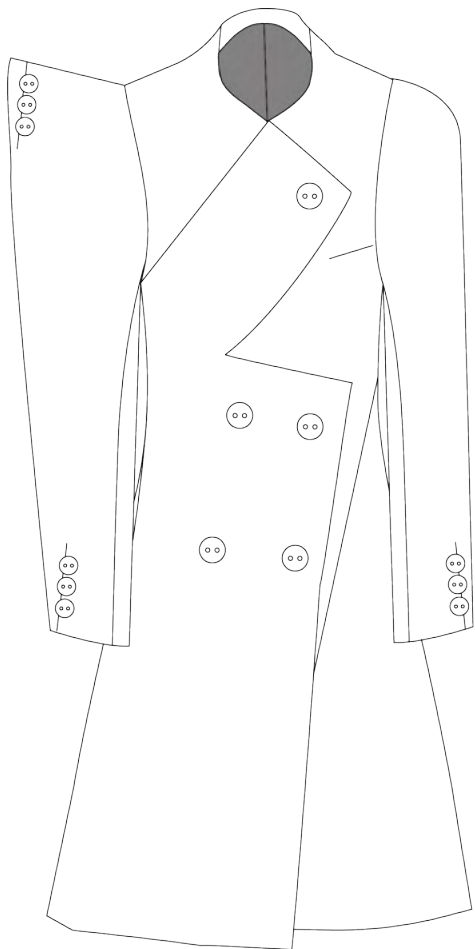
LK 2.

LK 3.

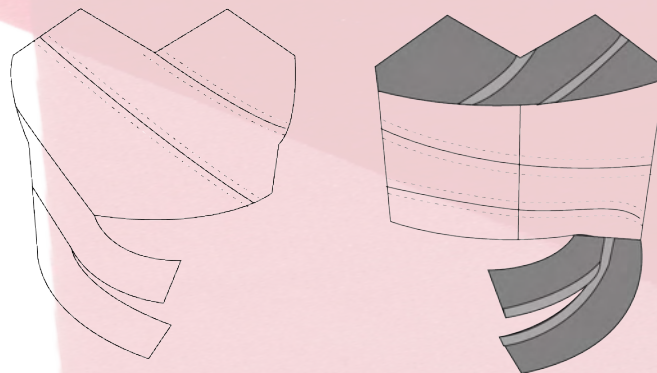




LK 4.

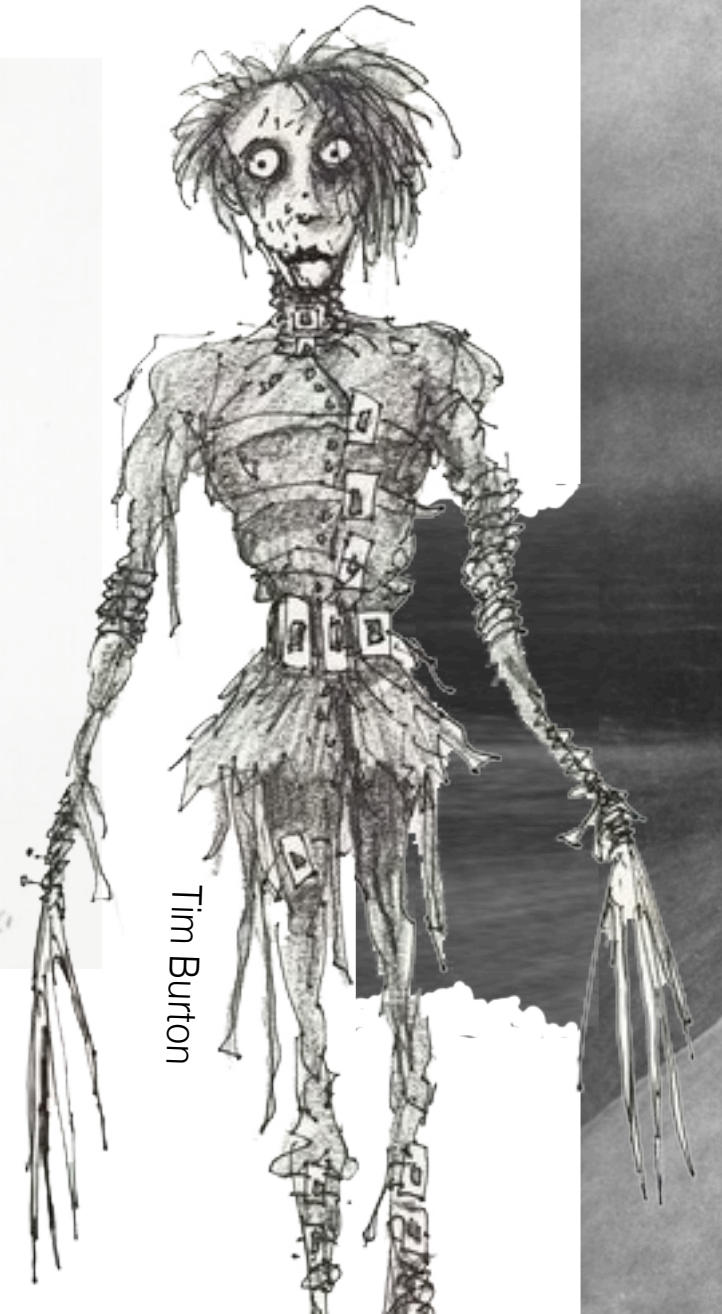


LK 5.



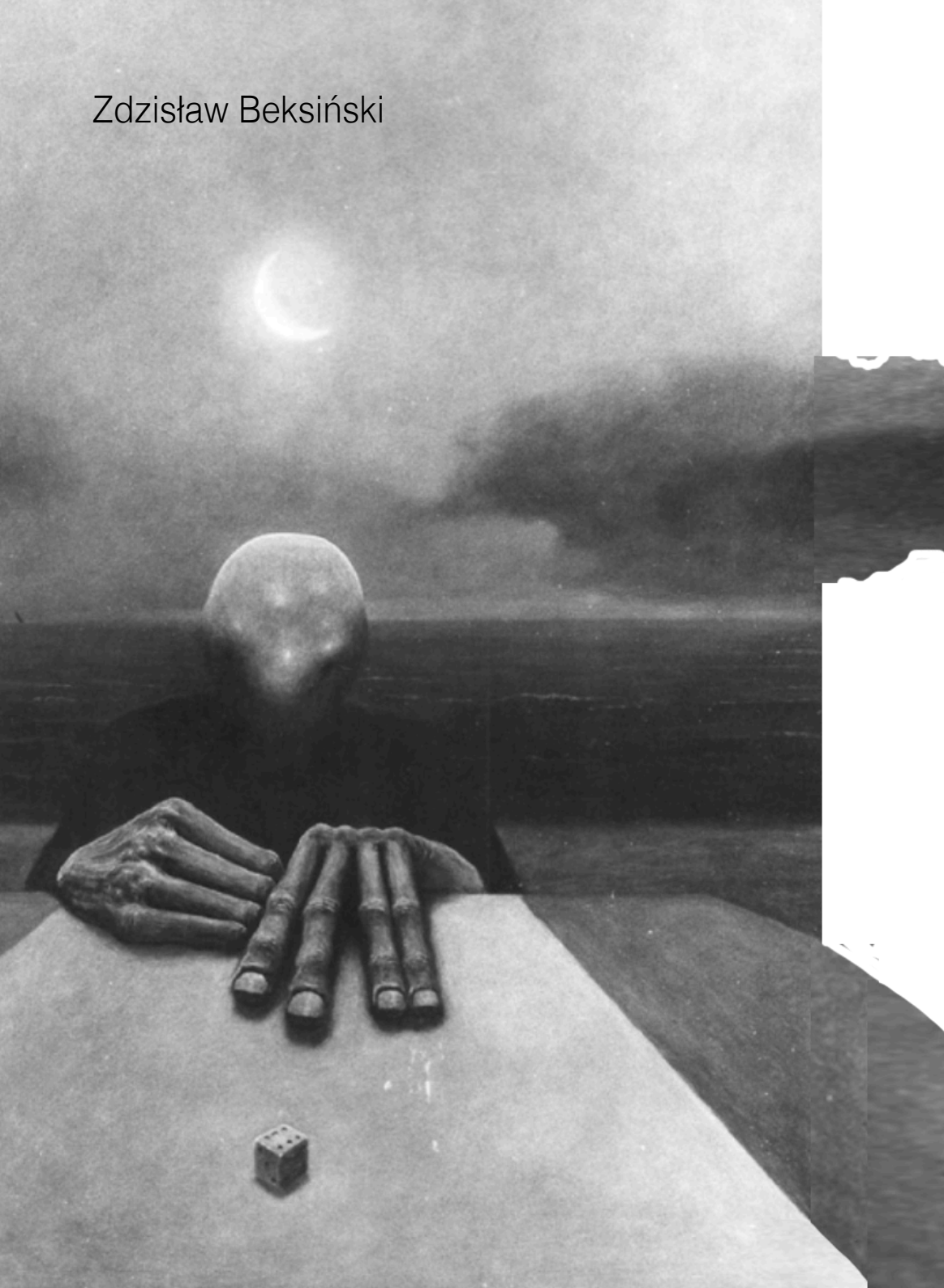


SURREALISM



Tim Burton

Zdzisław Beksiński



Salvador Dali



Key Components of Surrealism:

- Juxtaposition
- Irrationality
- Exaggerative sizing
- Paradoxical

Portraying my perception of
dystopian surrealism.

t o w e r i n g

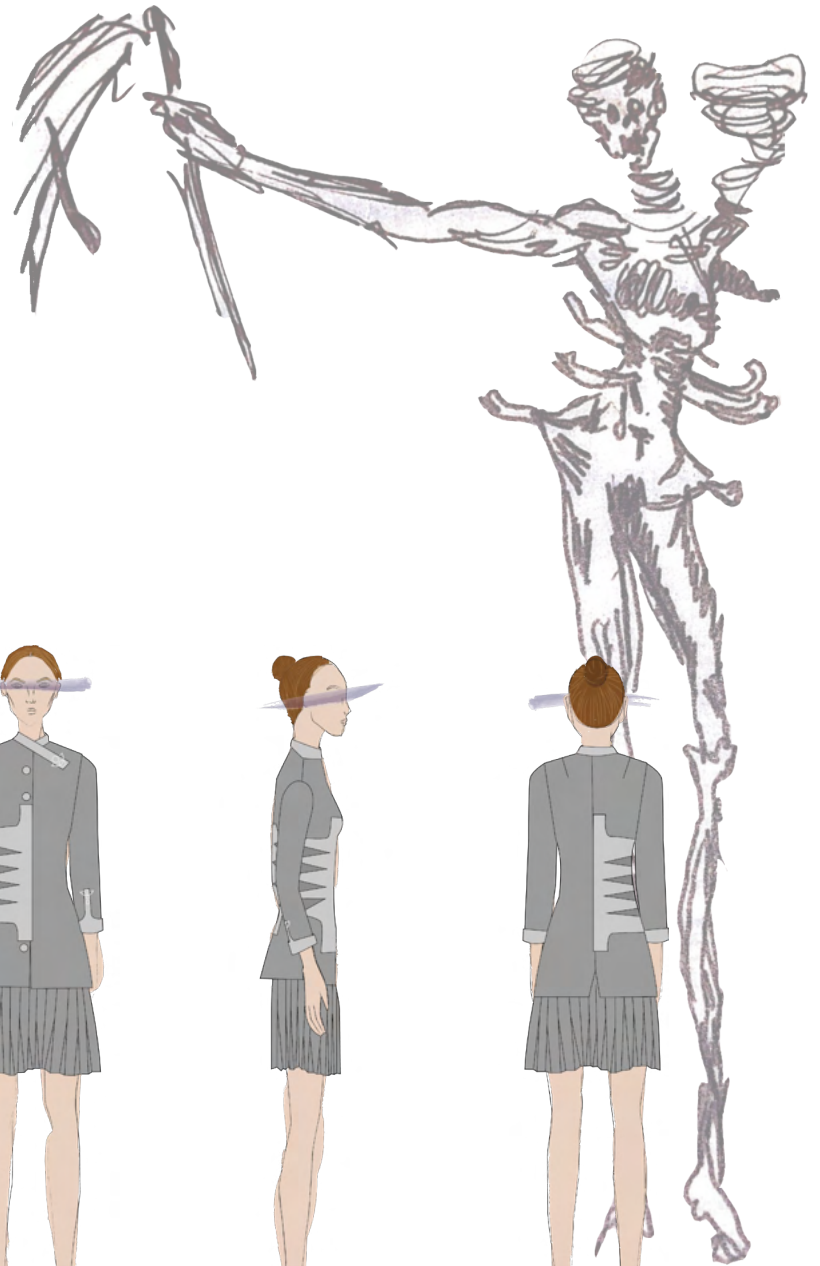




n i g h t m a r i s h

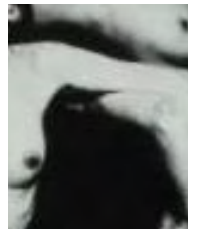
A surrealist who often illustrated skulls, skeletons & elongated shapes within his work, making references to memento mori.





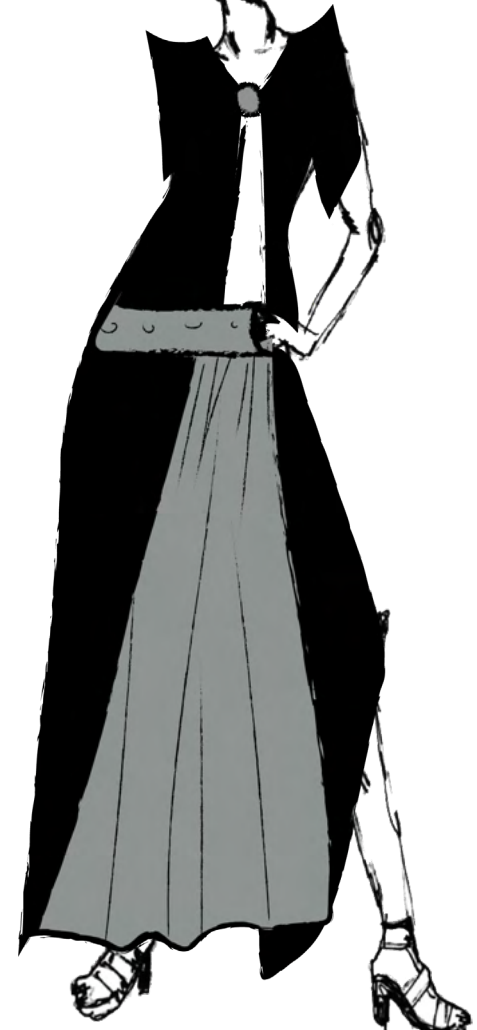


He also used the physical human body to bend & create shapes in unusual ways- here is another example of a skull he produced.





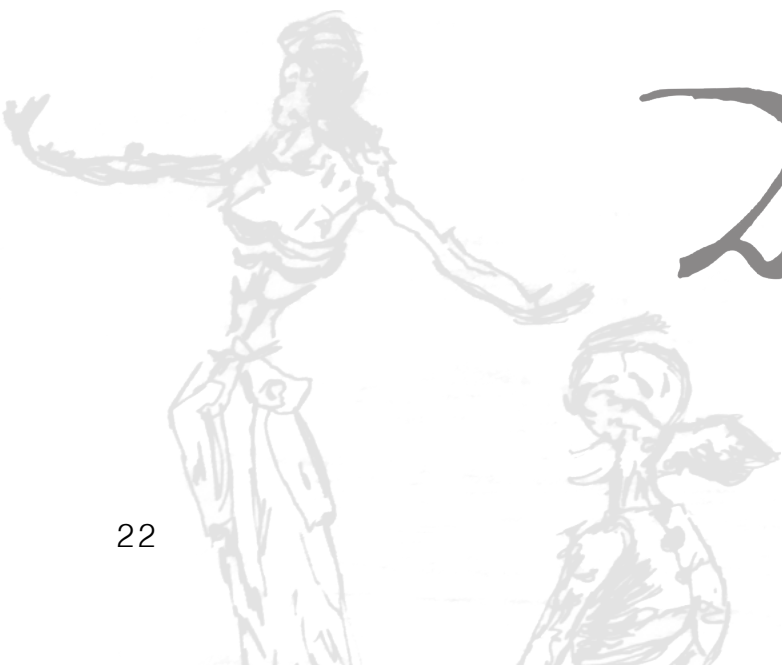
Ballerina in a Death's Head - Dali 1939



Schiaparelli

X

Dalí

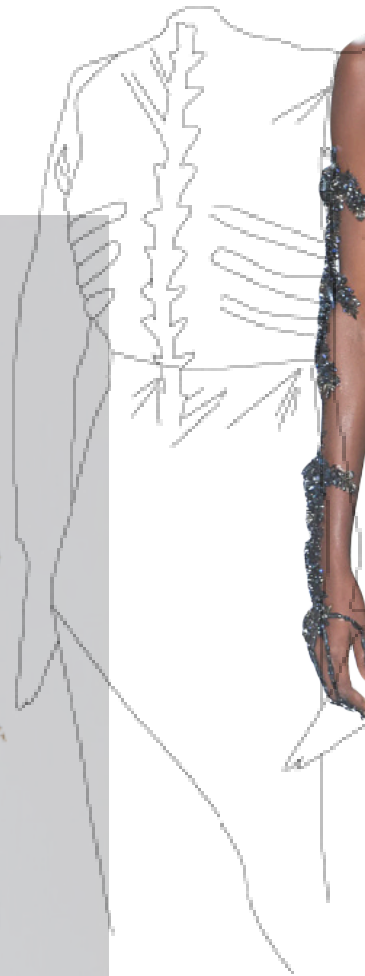


Schiaparelli produced her, 'Skeleton Dress', as part of her collection 'Le Cirque' with Dali.

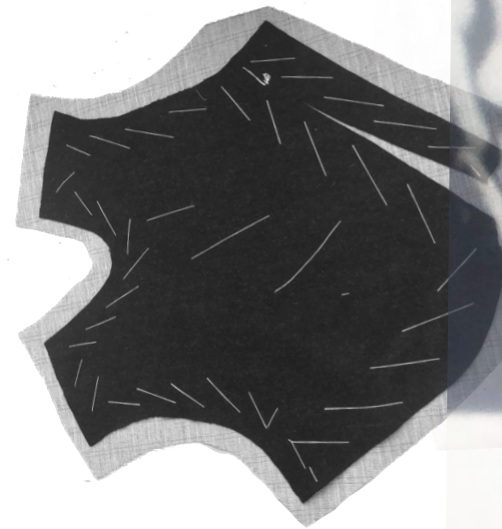
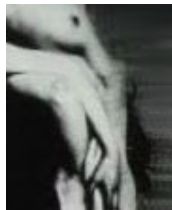
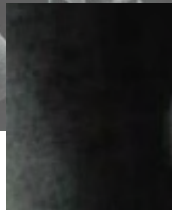
The reference to the dress is still made today.

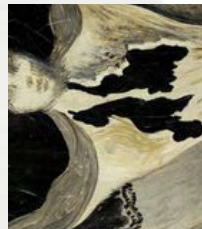


Trapunto quilting creates the bones.

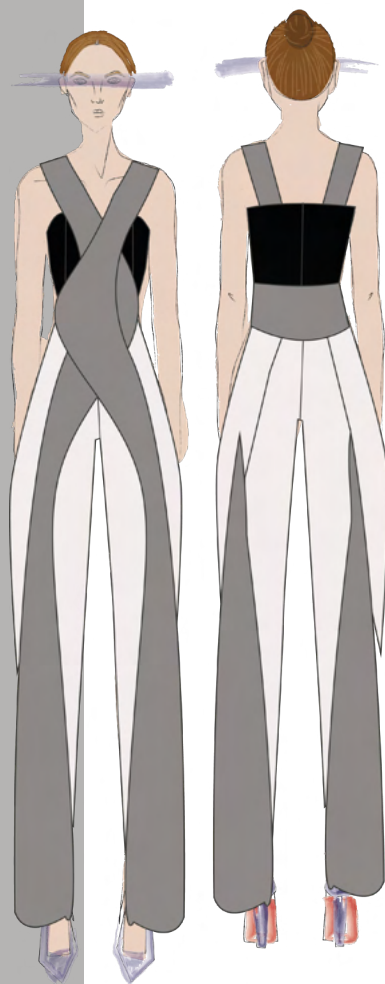
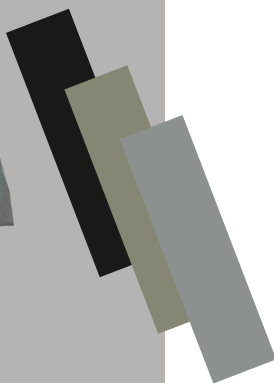


Using creative pattern-cutting
to convey surrealism.





Dali's 'Ballerina in a Death's Head', has inspired the sharp, voluminous sleeves.







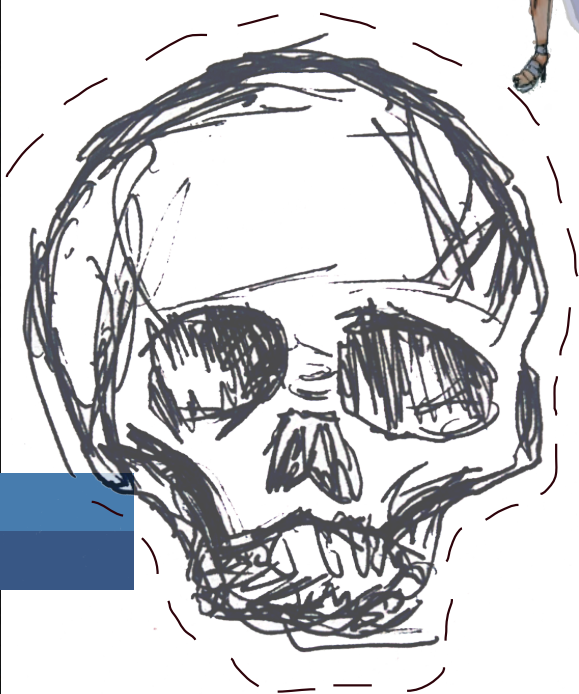
TIM BURTON



Burton uses triangular shapes within his illustrations.

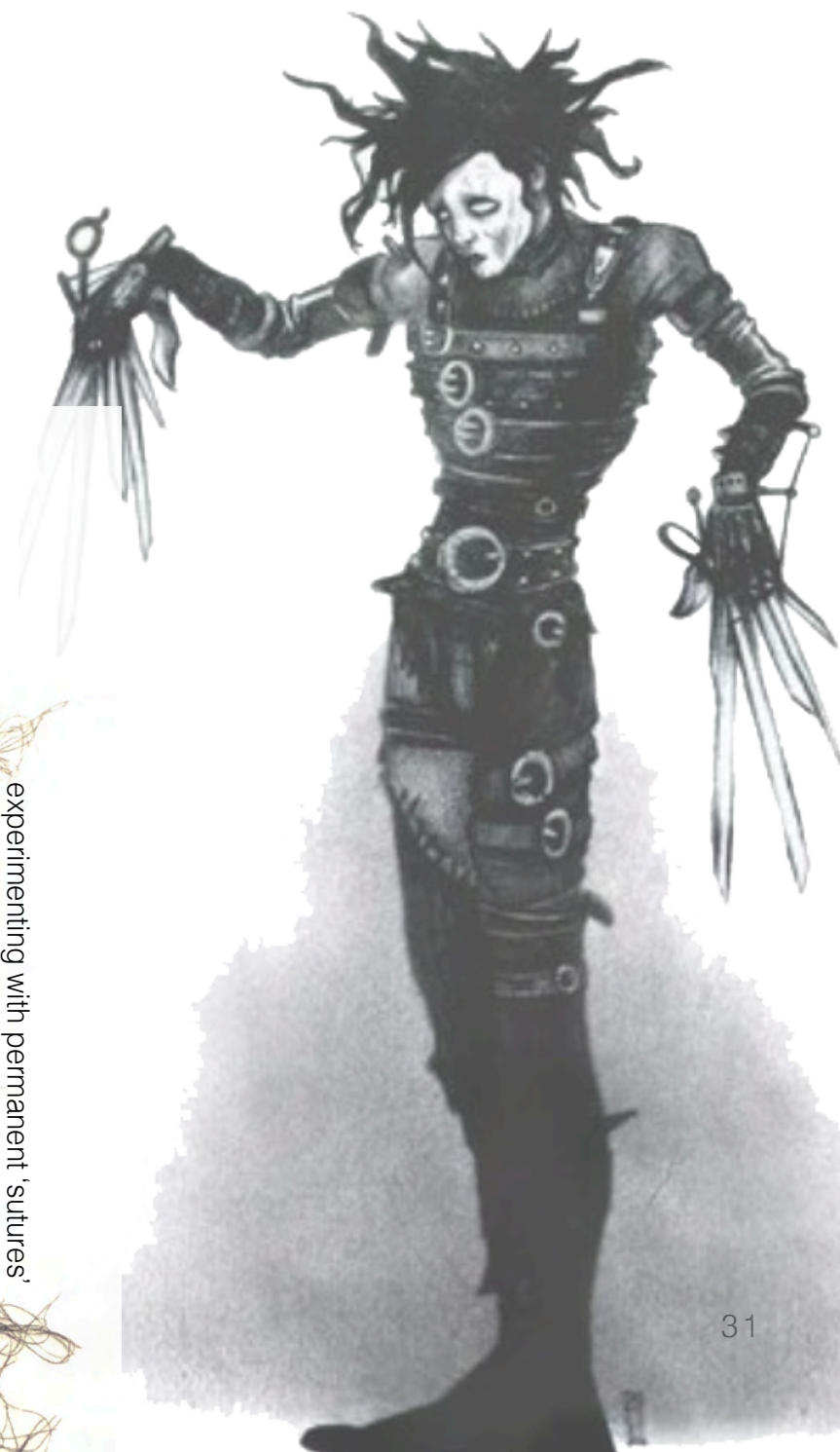


Tim Burton - Untitled (Sally Parts)





experimenting with permanent 'sutures'

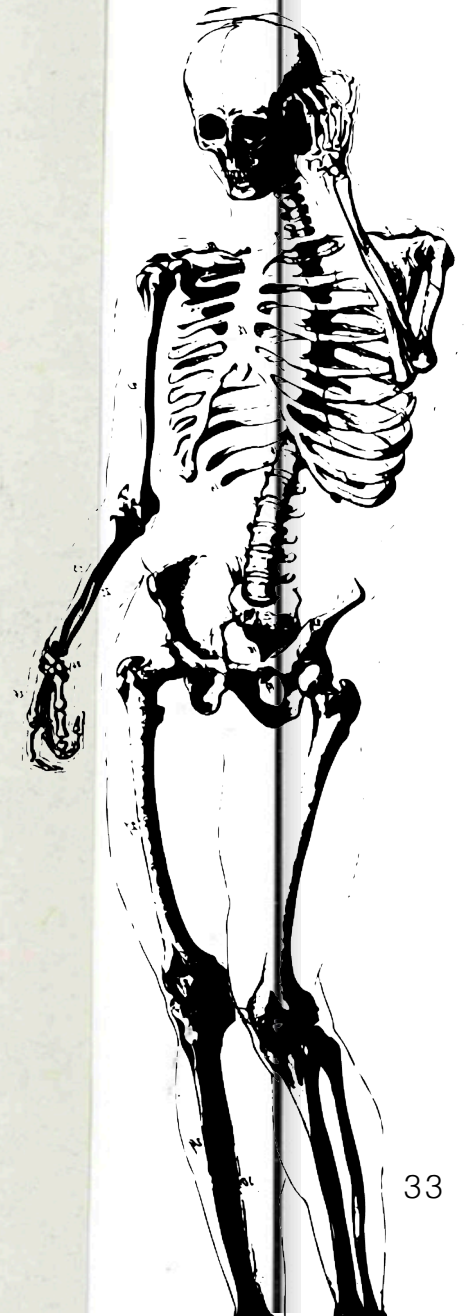
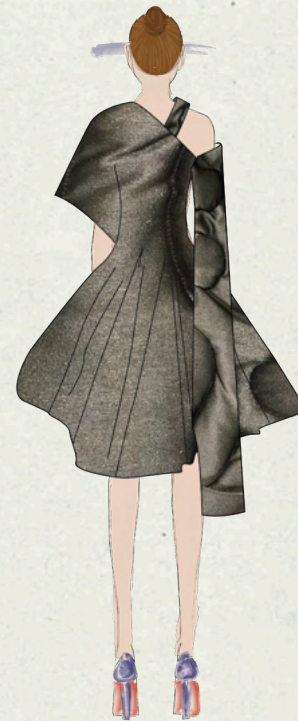
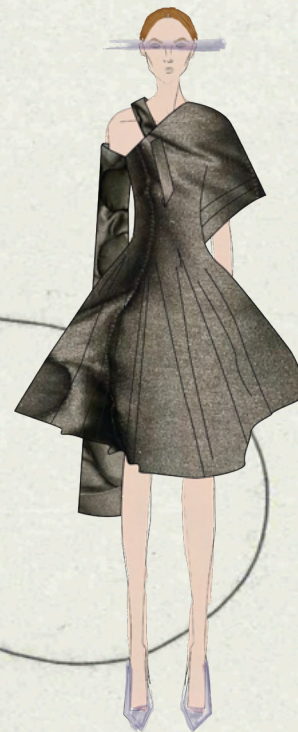


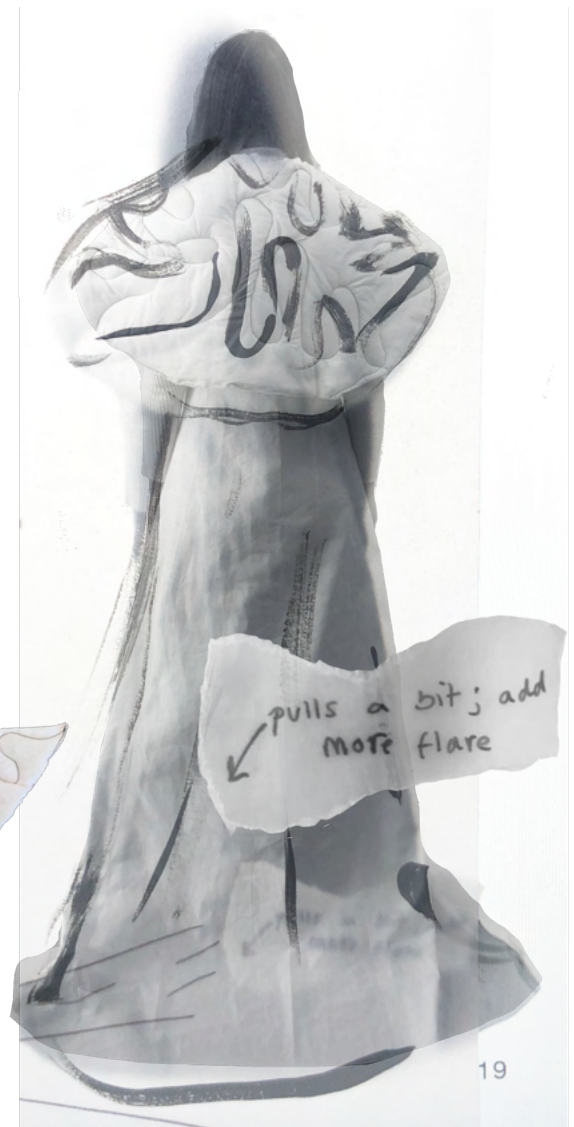


My perception of surrealism & dystopia; broad,
towering silhouettes & volume

Using quilting inspired by Schiaparelli's skeleton

dress.





too simplistic // not enough relation to
memento mori.



inspired by Schiaparelli's skeleton dress.



working with wadding to produce
a bulky silhouette.

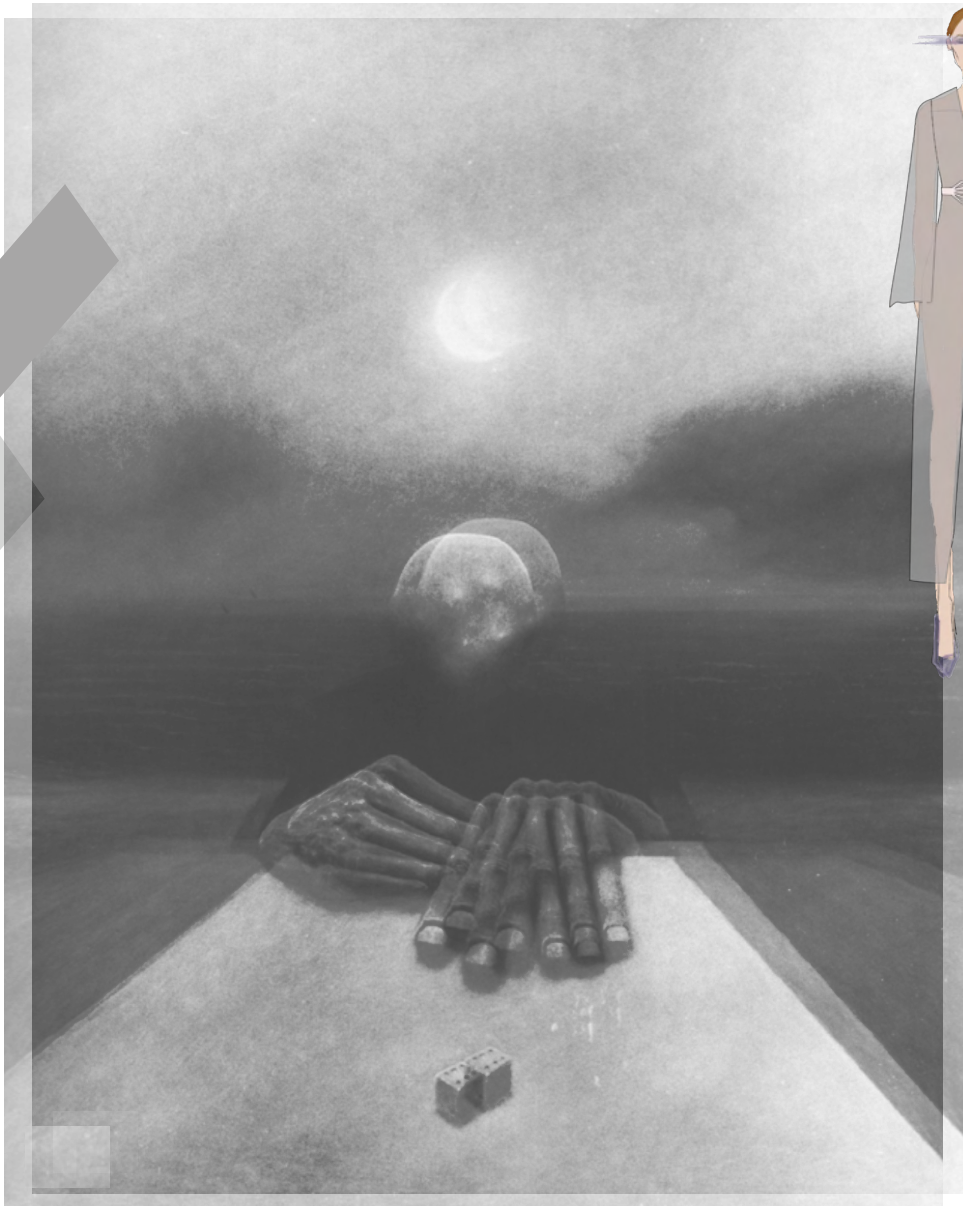


combining wadding samples to form a silhouette - 3D caped shoulders



Zdzisław Beksiński





Zdzisław Beksiński is another dystopian surrealist, whose work features exaggerated sized features & his overall palette is very dark.

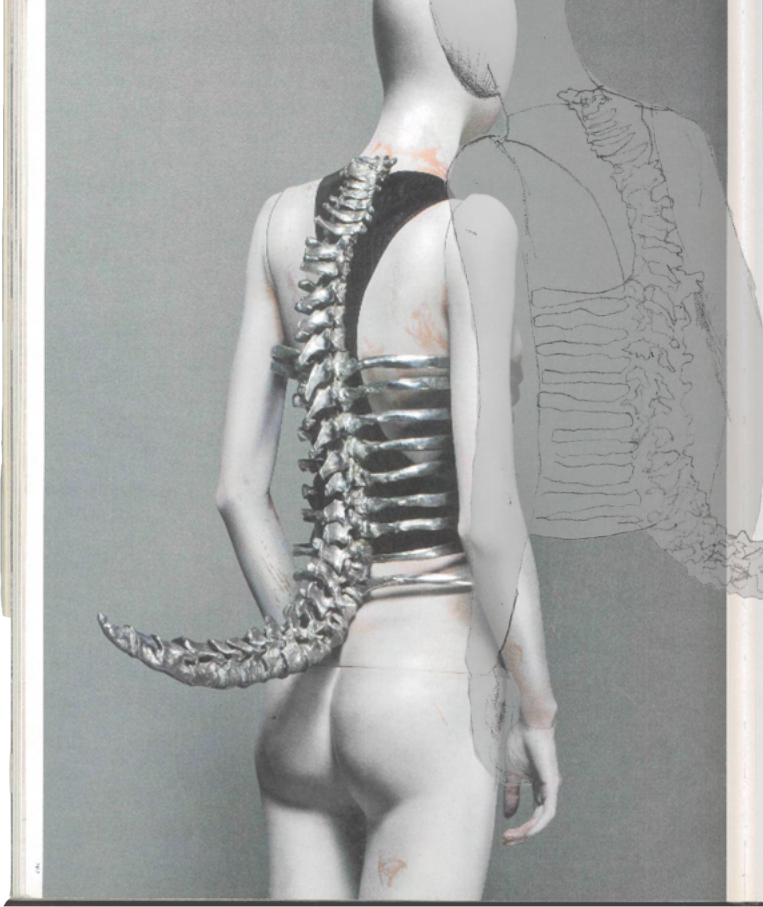




Inspiration from Zdzislaw Beksinksi's layered face



ALEXANDER MCQUEEN



McQueen focuses on anatomy & portrayed it through metal-work, creative-cutting but usually uses a dark colour scheme.





“This collection was inspired by Tim Burton. It started off dark and then got more romantic as it went along.”

“Life to me is a bit of a [Brothers] Grimm fairy tale.”



Laurye
Atelier

FORMATIVE SUBMISSION



Use one colour

pockets & function.

sharpen shoulders

remove Zips from
Sleeves; refine
to a more traditional
tailored look.

add a structure.

shorten
coat to
be knee-
length



LOOK I



LOOK II



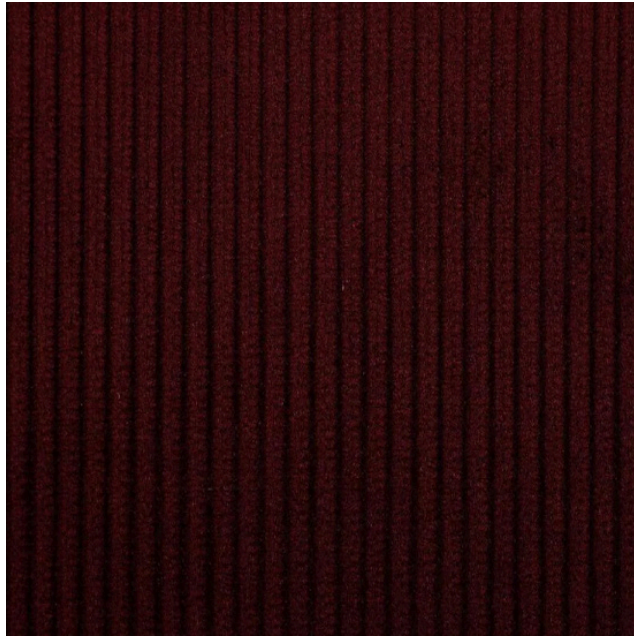
LOOK III

LINE - UP

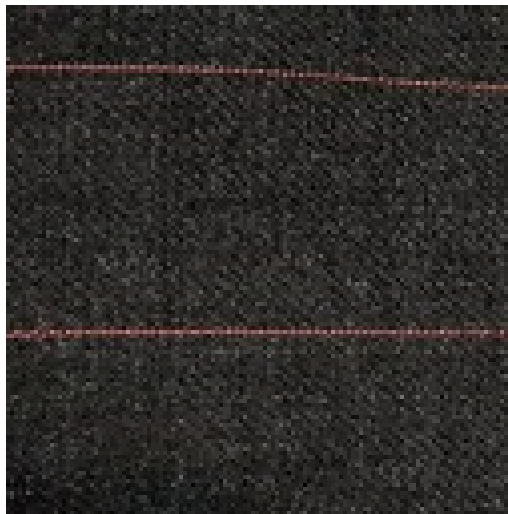




From the beginning I knew that my collection would be predominantly black due to the nature of my concept. I wanted to work with texture & pattern in order to add interest to my collection.

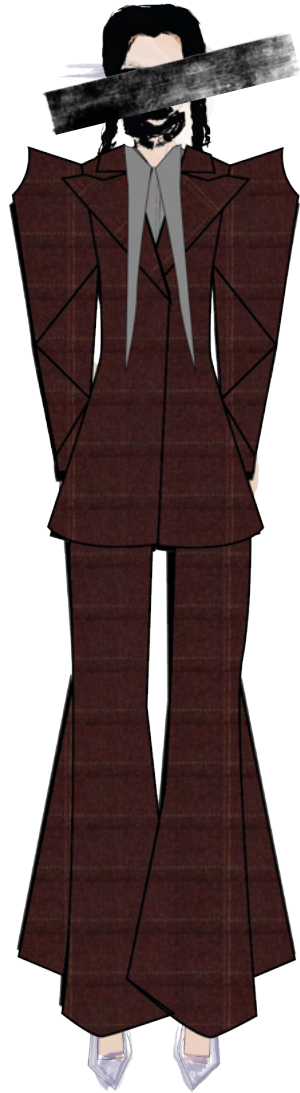
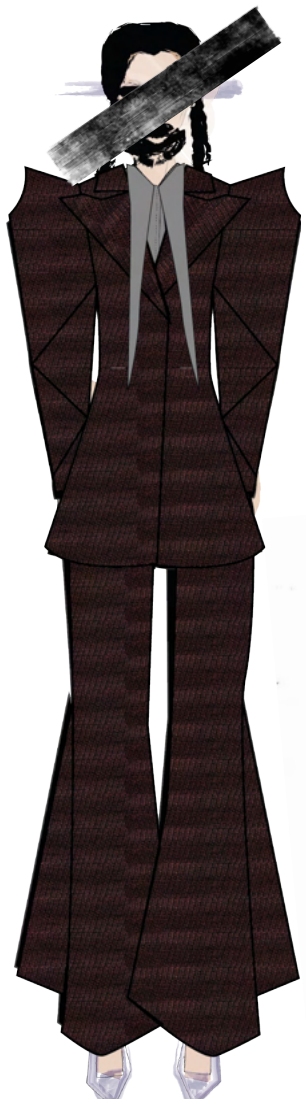


Staff & I decided it was better to use simple fabrics because of my creative seams. Texture & pattern created too much noise.





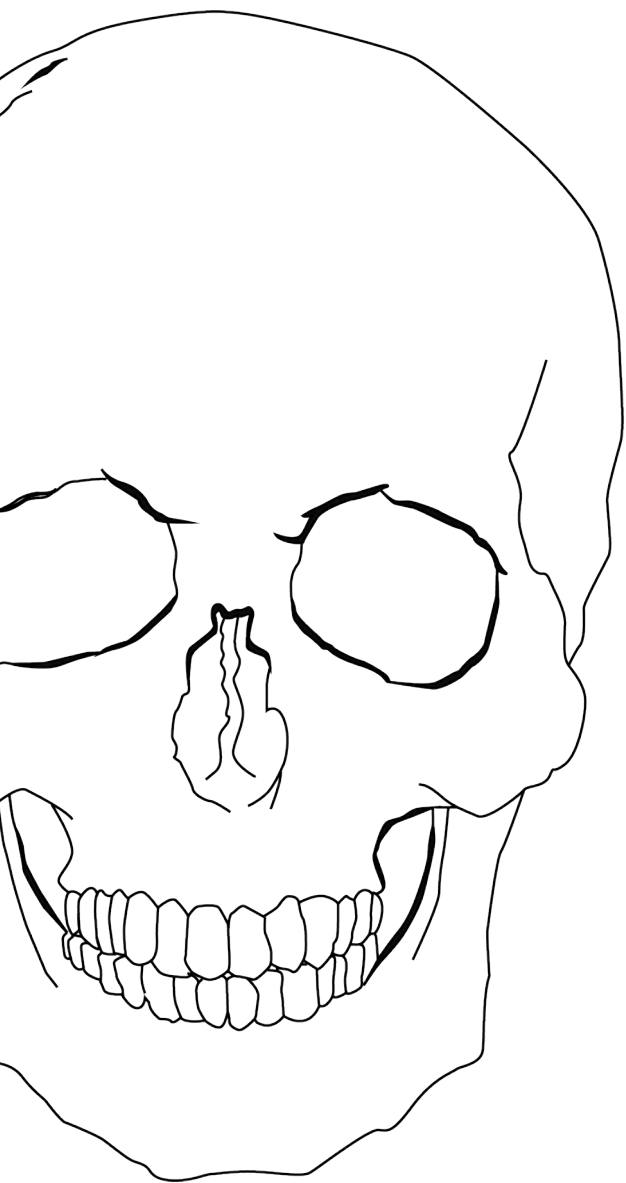
Punk & grunge styles typically utilise tartan.



Visualising look one in
various fabrics.







M E M E N T



M R I

