

ZAHRA ZOMORRODITABALVANDANI

COLLECTION

CHAPTER 11: THE LAST OF THE SAMURAI, BABA

MY COLLECTION PAYS TRIBUTE TO MY FATHER, MY LIFE'S WARRIOR, AND DRAWS INSPIRATION AND REFLECTION TOWARD THE SAMURAI CULTURE AND THEIR ARMOUR. IT FEATURES SHARP SHOULDERS, PLEATED SKIRTS, AND LAYERED TROUSERS OF TRADITIONAL SAMURAI ATTIRE. I'VE ALSO BLENDED IN THE BOLD, CONFIDENT STYLE OF 1980S POWER WOMEN. IT IS A FUSION OF TRADITIONAL AND CONTEMPORARY, EMPOWERING THE WEARER WITH STRENGTH AND RESILIENCE, REFLECTING THE SPIRIT OF A WARRIOR.

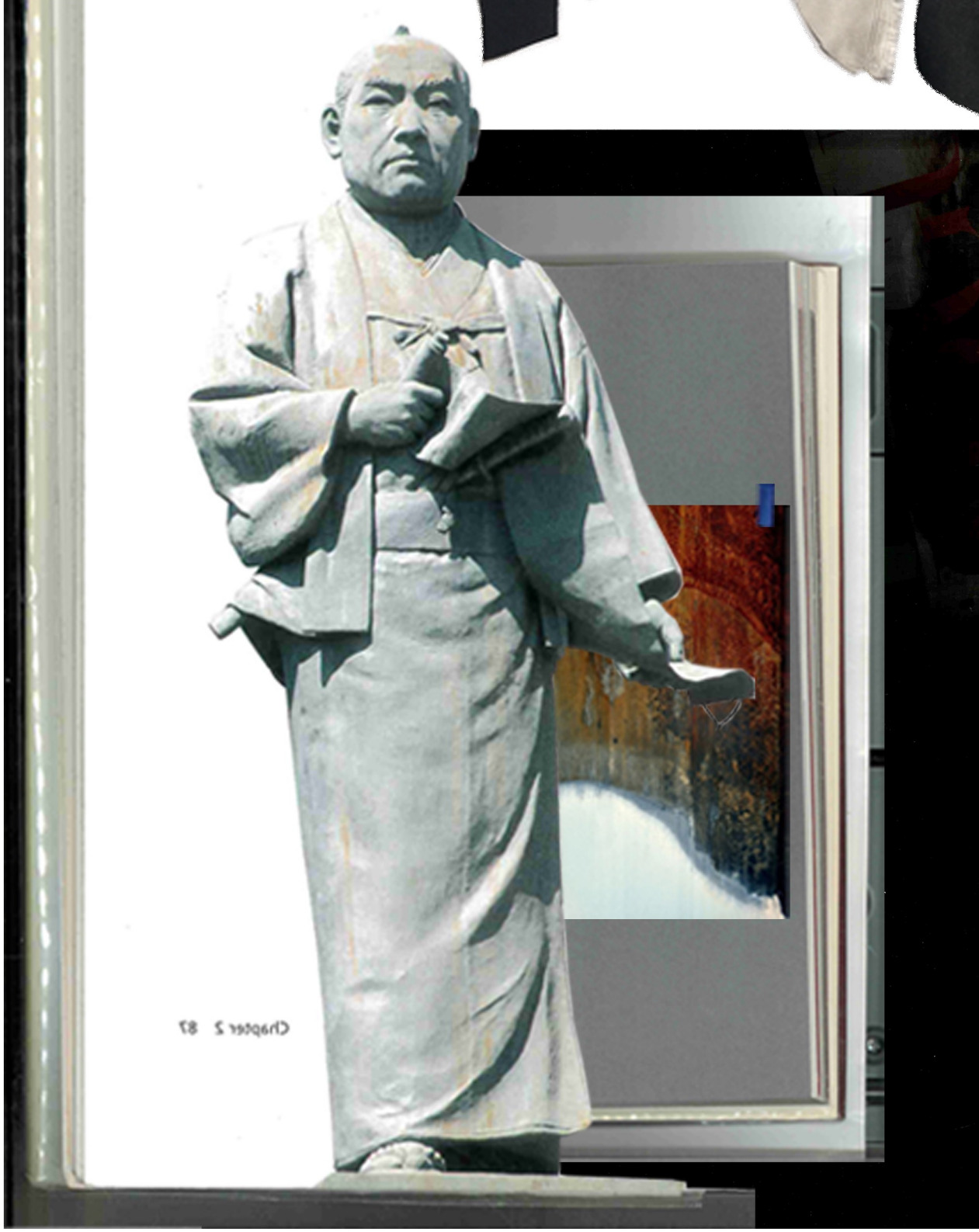
CHAPTER 11

The Last of the Samurai

CHAPTER 11: THE LAST OF THE SAMURAI, BABA

MY COLLECTION PAYS TRIBUTE TO MY FATHER, MY LIFE'S WARRIOR, AND DRAWS INSPIRATION AND REFLECTION TOWARD THE SAMURAI CULTURE AND THEIR ARMOUR. IT FEATURES SHARP SHOULDERS, PLEATED SKIRTS, AND LAYERED TROUSERS OF TRADITIONAL SAMURAI ATTIRE. I'VE ALSO BLENDED IN THE BOLD, CONFIDENT STYLE OF 1980S POWER WOMEN. IT IS A FUSION OF TRADITIONAL AND CONTEMPORARY, EMPOWERING THE WEARER WITH STRENGTH AND RESILIENCE, REFLECTING THE SPIRIT OF A WARRIOR.







Pleated Sami - Skirt
Placed on top of another
garment

Initial inspiration starts
from conveying my father's
Warrior characteristic to
Samurai's

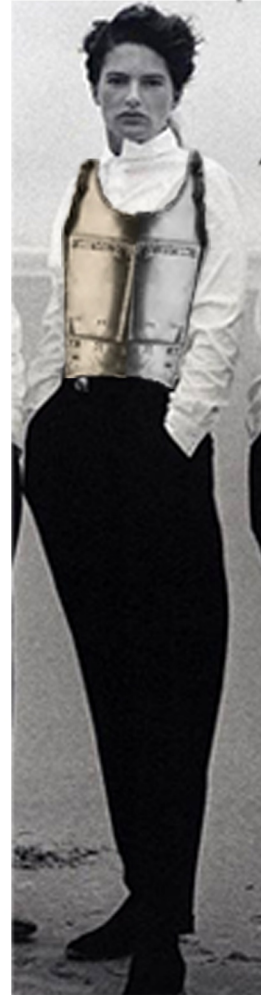


Connecting the sharp
pointy Samurai's -
kamishimo to 80s
woman's power suit's
sharp shoulders with
touch of tailoring elements





COLLAGING SAMURAI'S CHEST AND LEGS SHIELDS FOR THE FIRST OUTFIT INITIAL IDEA



Making the chest shield details with traditional samurai's armor



INITIAL 3D STAND WORK EXPLORATION BY DRAWING DIFFERENT SHAPES OF CHEST SHIELD ON TOP OF THE FIRST OUTFIT TOILE



Pushing some upward to lift the sleeve's angle

Double pleat for the front of the trousers

Open pleat for the sides of the sleeves

The invisible zip should be on the side seam

Armours would be tied up by leather or fabric straps

PLAYING WITH PROPORTIONS



VIDEOING MYSELF TRYING DIFFERENT ARMOUR PLACEMENTS



USING ADOBE PHOTOSHOP TO CHANGE THE COLORS OF THE ARMOUR TO BE AS CLOSE AS POSSIBLE TO RUSTED METAL COLORS

Back trying how fastening the armours...

COLLAGING TOGETHER TRADITIONAL SAMURAI CLOTHING AND 80S POWER WOMEN CLOTHING TO CREATE A SUBTLE OUTFIT FOR THE 2ND OUTFIT

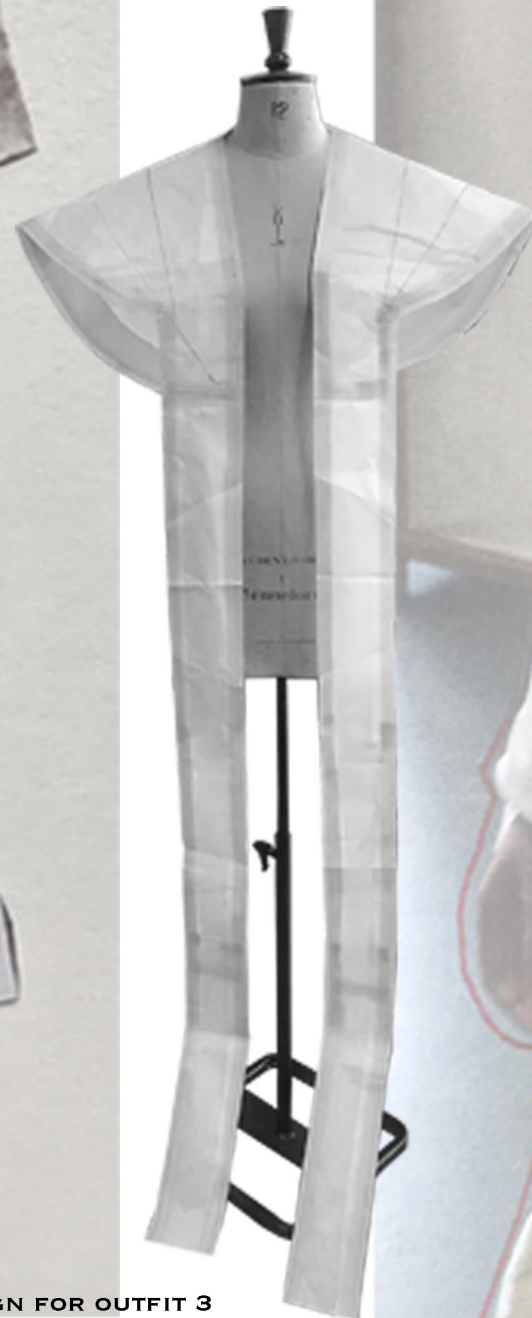


BREAKING DOWN COLLAGE INTO DESIGN DEVELOPMENT AND REFINING THE ANGLES





OUTFIT 3 SHOULDER ARMOUR
PATTERN



EVOLVING THE DESIGN FOR OUTFIT 3
BY COLLAGING



FOCUSING ON THE ANGLES
AND THE SHOULDERS ON BOTH
THE 80s ELEMENTS AND THE
SAMURAI KAMISHIMO



For around the
armhole, there
are two panels
on top of
each other



Double
panels
for the
armhole

the side
panel's pleat
is the recreation
of the 1st outfit's
short pleats
on the
sleeves

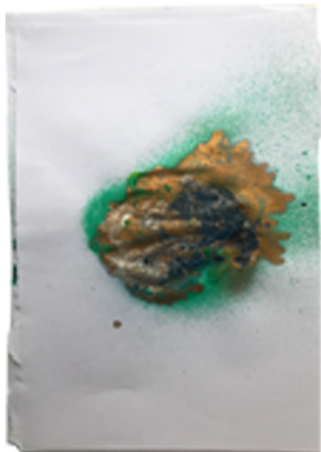
COLOR DEVELOPMENT



TEXTILE DEVELOPMENT

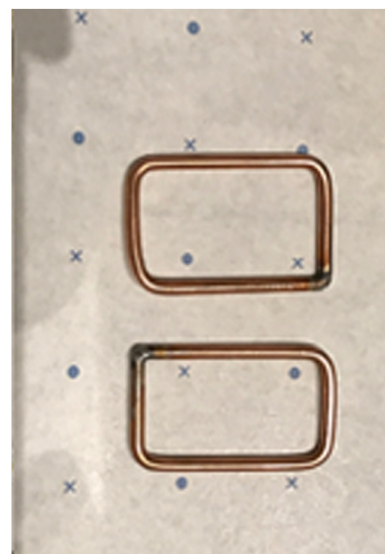
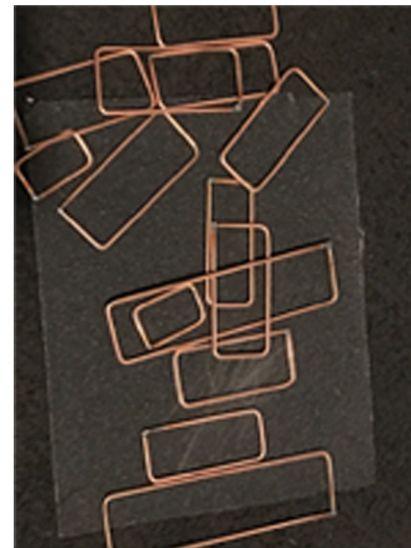
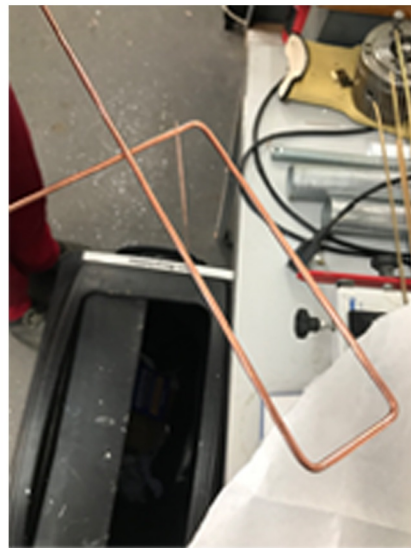


PROCESSES OF MAKING MY OWN TEXTILE ON EACH ARMOUR SHIELDS WITH OXIDIZED BASED LEATHER COATED WITH METALIC EFFECT PAINTINGS AND TECHNIQUES.



BEFORE MOVING TO THE ACTUAL LEATHER PIECES I TESTED OUT ON A4 PAPERS.

MATAL FASTENING DEVELOPMENT



- STARTING WITH BENDING ALUMINIUM WIRES WITH THE MEASUREMENTS FOR THE STRAPS
- USE THE BRAZING MACHINE BY FUSING THE 2 ENDS
- SOFTENING THE CORNER EDGES WITH SAND PAPERS
- THEN SPRAY PAINT THE RINGS TO A BRASS AND ANTIQUE SILVER COLORS

Look 1



Look 2



Look 3



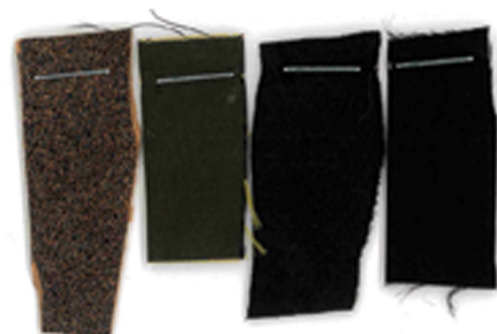
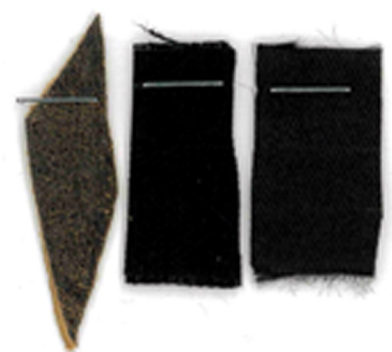
Look 4

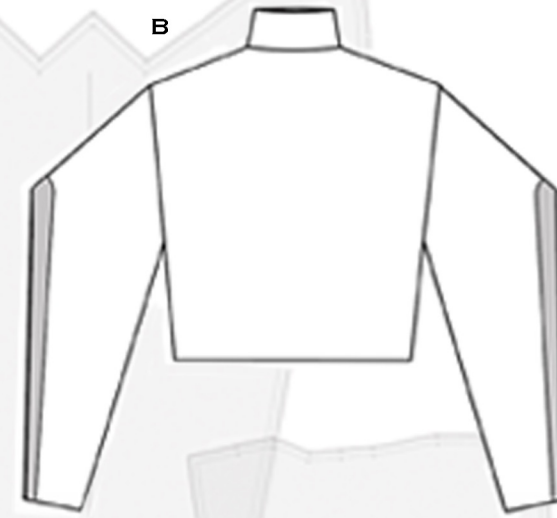


Look 5

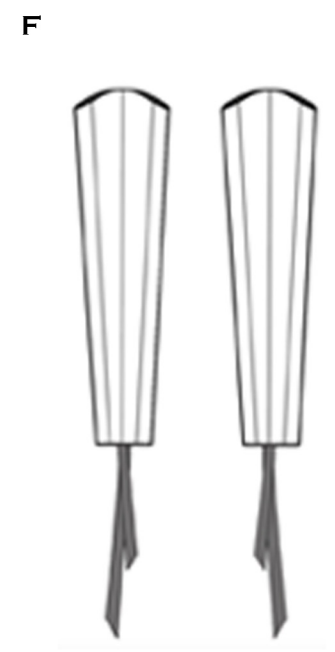


Look 6





SLEEVE



FRONT TROUSERS

