



CROCHET SAMPLE:



HISTORICAL REFERENCE 15th-17th centuries

REMINDS OF TRADITIONAL PORTUGUESE ARCHITECTURE



INTERIOR HOMES

NAUTICAL ELEMENTS (IN SECTIONS & GAPS BETWEEN SHADOWING)



ORGANIC & ABSTRACT

WITH VINEWORK DETAILS

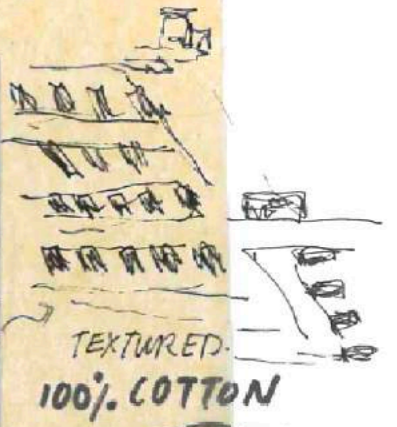
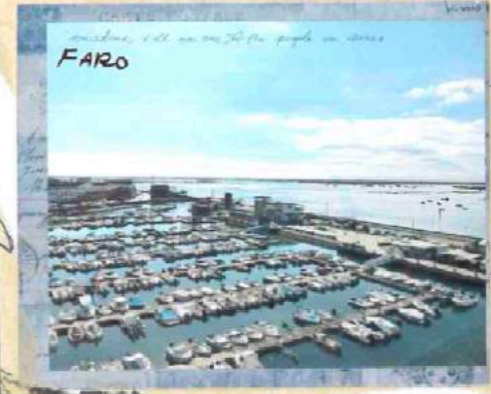
IMPRINTED



# SAILOR and the MAIDEN

(HISTORY) PORTUGUESE NAVY & MARITIME PAST

1st



TEXTURED 100% COTTON



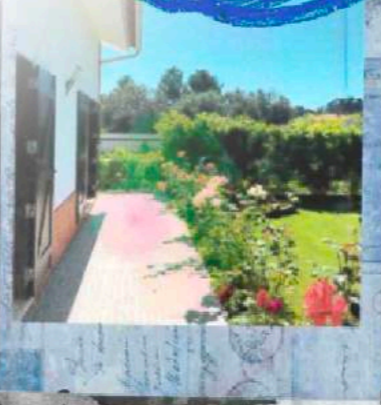
2-3 POLE MASTS & TRIANGULAR AILS



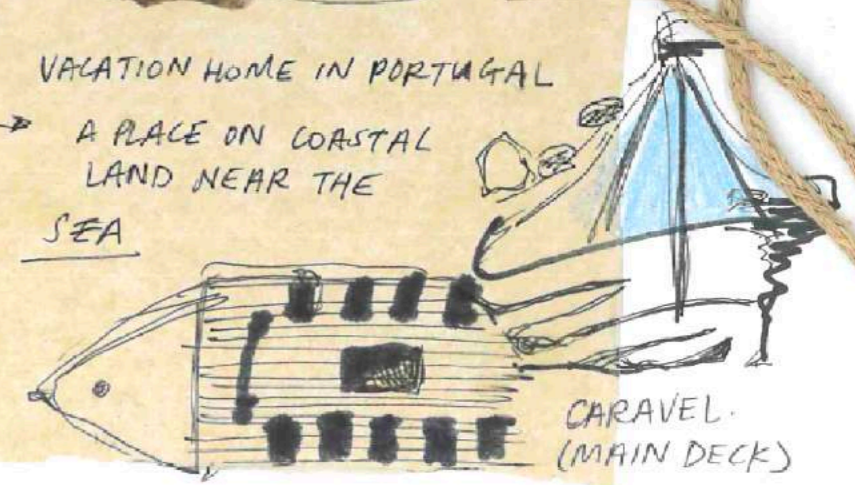
CANNONS

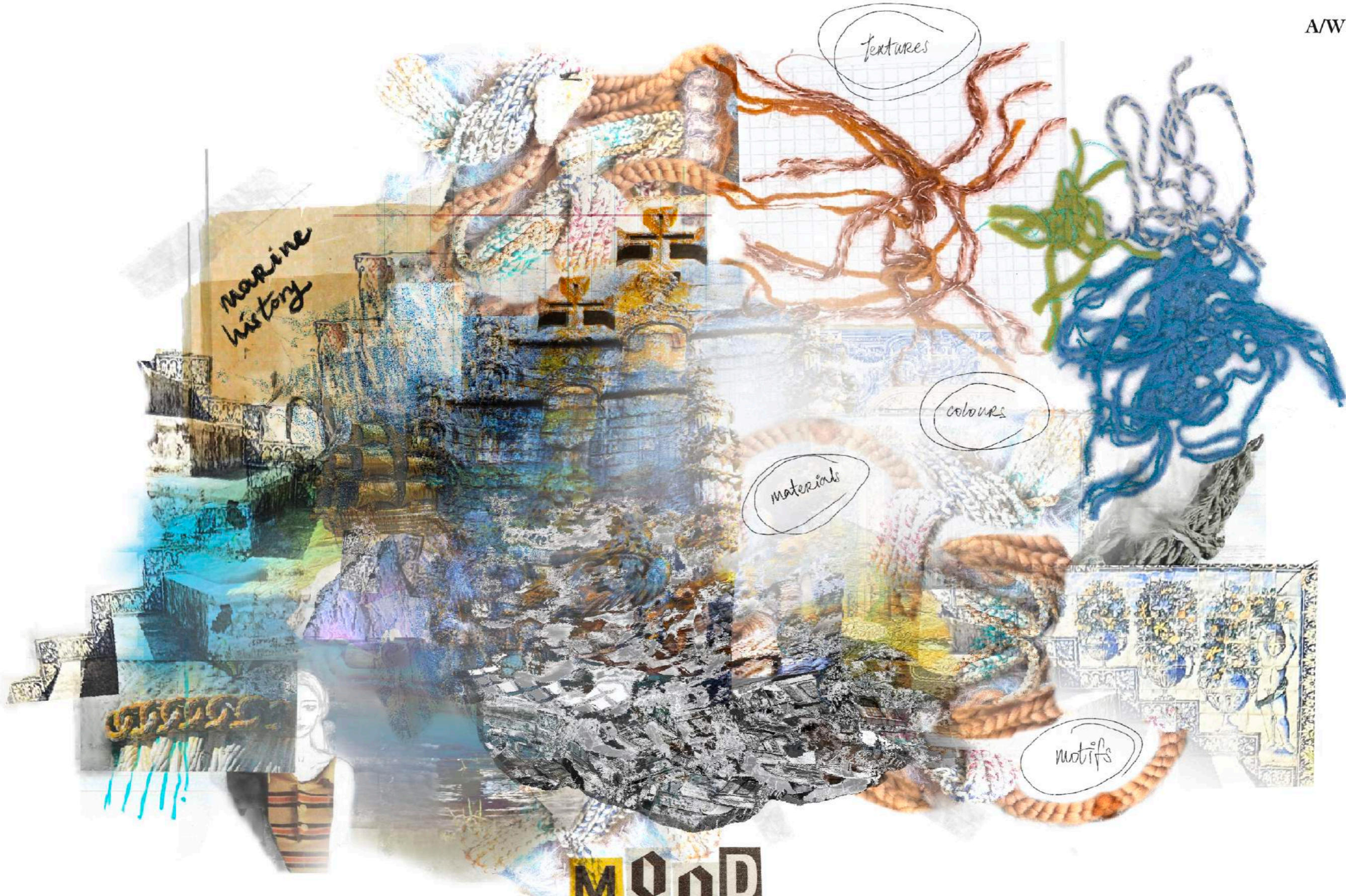
VACATION HOME IN PORTUGAL

A PLACE ON COASTAL LAND NEAR THE SEA



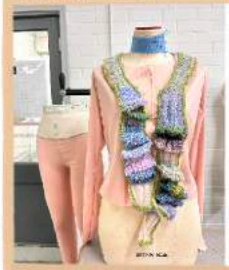
STREAMLINED LIKE A FISH SHAPED CARAVEL:





MOOD  
BOARD

SHAPING THE TEXTILES HOOD



DRESS INSPIRED FROM

LOOKS #1 AND #3 FINAL

OVER-LAPPING + STREAM-LINE



HOOD → BAG



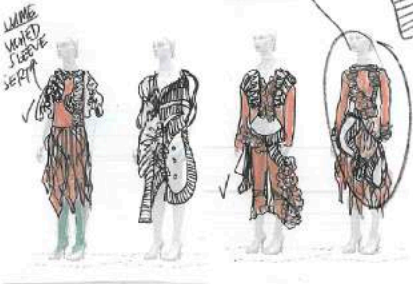
TWISTING

CONSTRUCTED.



18/04/21

Final fitting



COL: 10 ROWS  
COLOUR A  
COLOUR B  
33 STI  
+ TIES



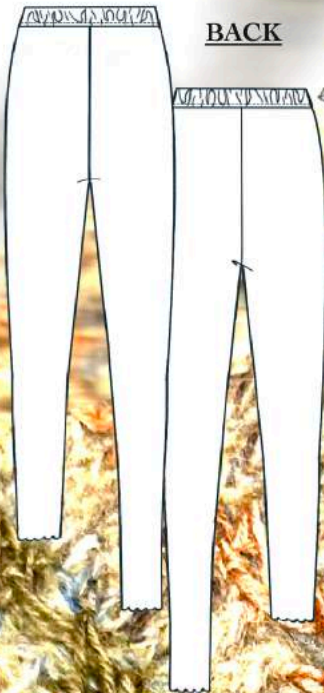
PROCESS

TONNI & KYE

A/W 2024-2025  
LOOK 01

FRONT

BACK



MODIFY SLEEVE

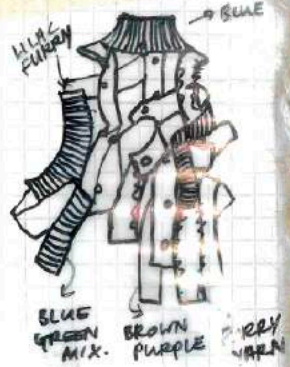


ADDED ALONG EDGES OF HOOD & NECKLINE

LOOK 01

IDEA DEVELOPMENT

ALTERNATE COLOUR SWITCHING IN ROWS



SYMMETRICAL PATTERNED KNIT



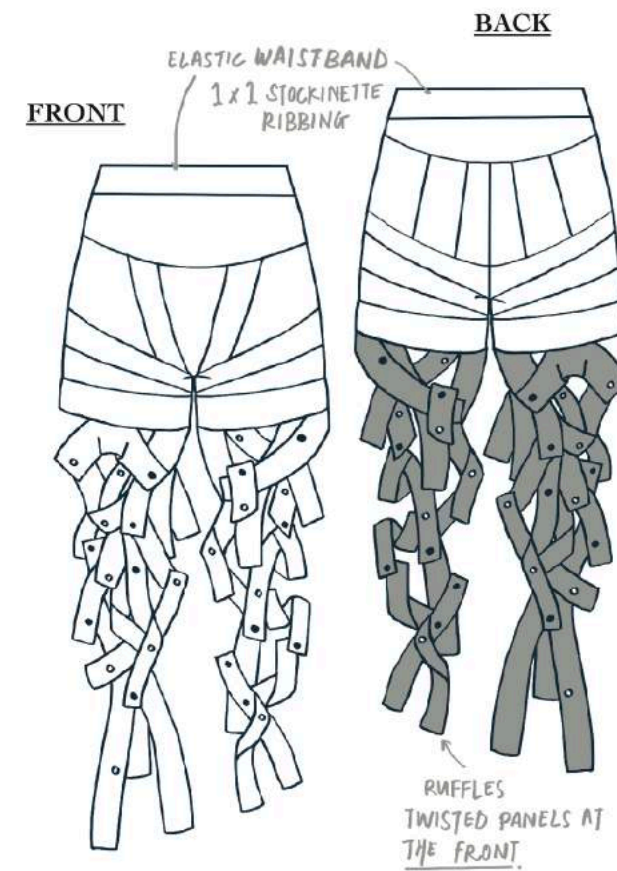
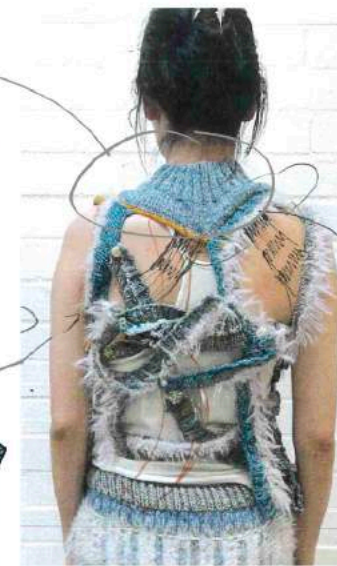
COLOUR EXPERIMENT



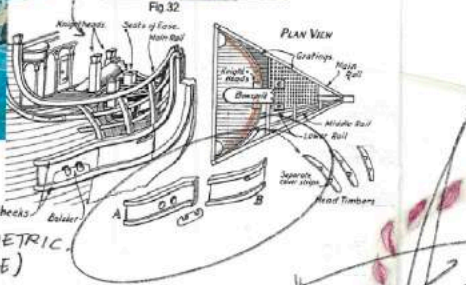
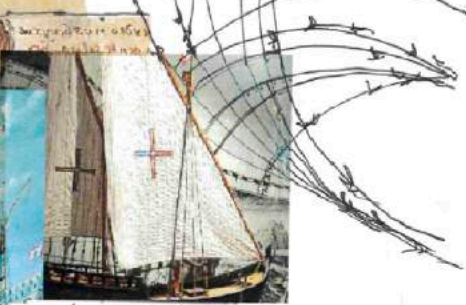
LOOK A  
LOOK B



BACK  
COLLAR KNIT  
IN 2x2 RIBBING



PORTUGUESE  
MARITIME AT SEA



STRUCTURED  
LINES GEOMETRY  
+ CIRCULAR GEOMETRIC  
PLEATED (VOLUME)  
SLEEVES

PLEATED  
COLUMNS  
CONTRAST

VERTICAL  
COLUMNS

FURRY TEXTURE



VARYING PROPORTIONATE  
LINEWORK

INTERSECT CURVES

TYING BLOCKS  
OF WOOD IN  
PLACE

INTERSECTING LINES  
w/ YARNS OF  
VARYING THICKNESS.

CHUNKY WOOL WOVEN  
UNDER.

STANDARD TURTLE  
NECK COLLAR,

CROCHET  
EDGES

2x2 RIB

1x1 STOCKINETTE CLASSIC,

2x2 RIBBED KNIT

CROCHET  
BORDERS.

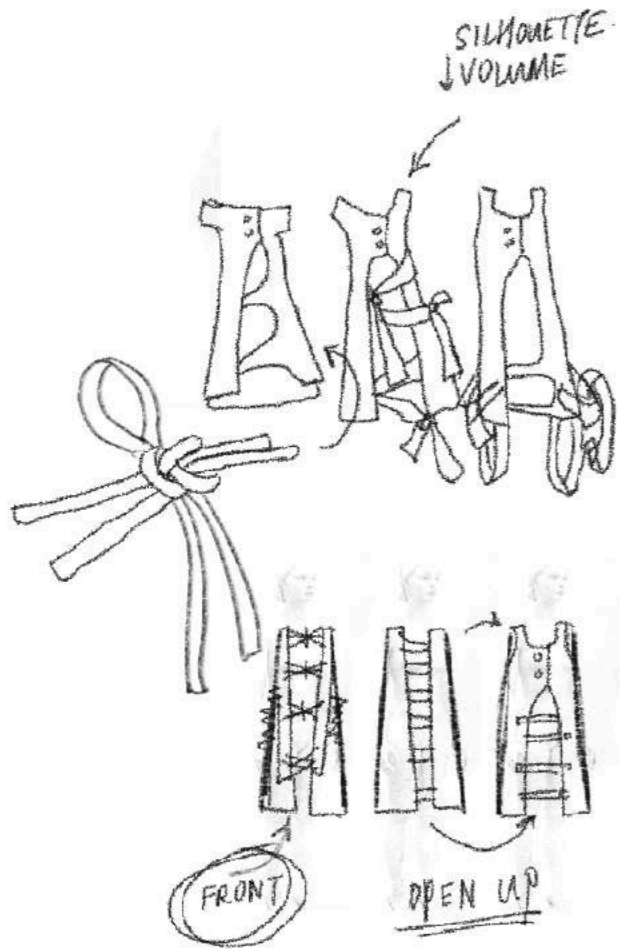
VESSEL INSPIRED

LOOK 02

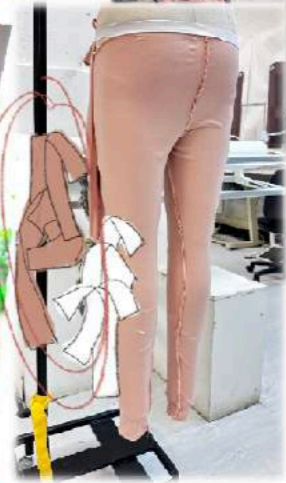




A/W 2024-2025  
LOOK 03 FITTING  
AND BASE PIECES

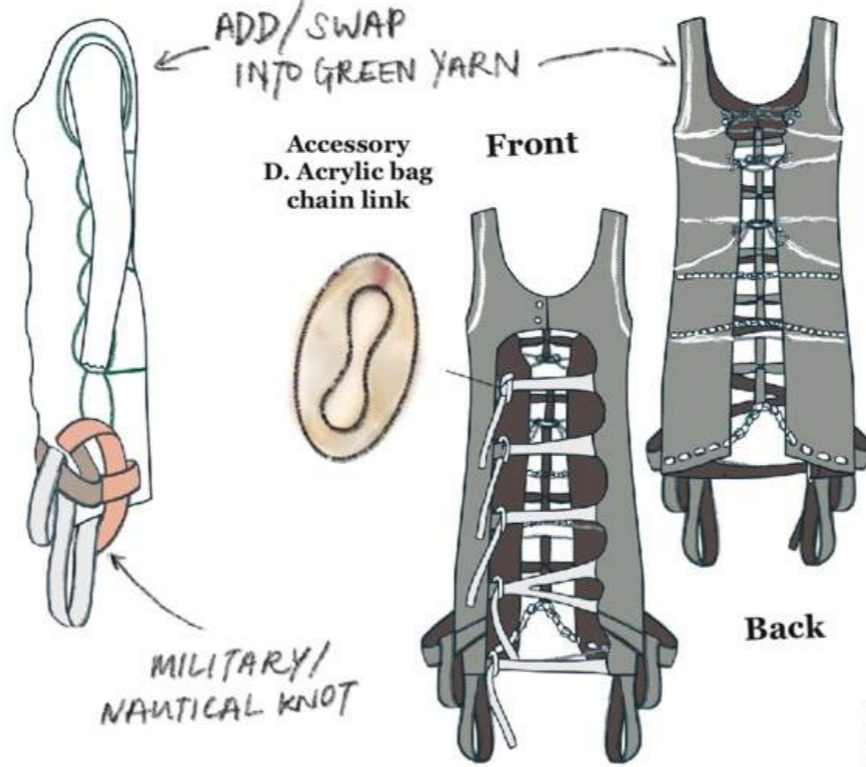


NECK PIECE



8/03/24

SOFT ARMOUR.  
PROTECTION.  
HEALING.



Accessory  
D. Acrylic bag  
chain link

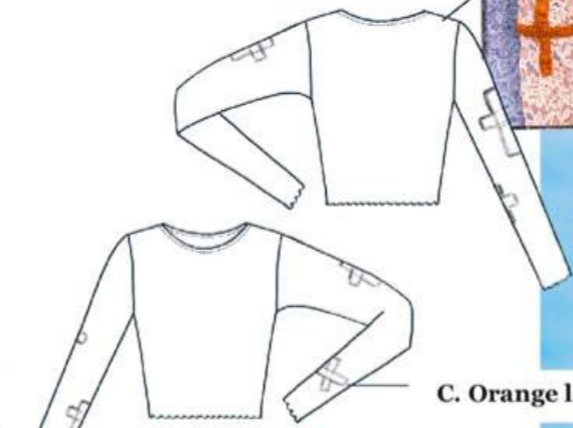
Front

Back



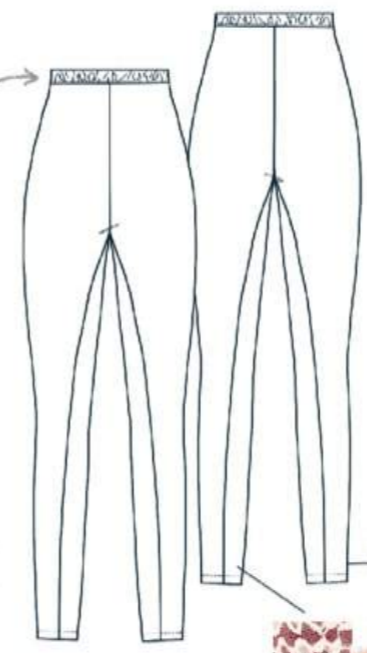
LOWER BODY  
SILHOUETTES.

INSPIRED BY  
ORGANIC LINES  
& STRETCHED  
SILHOUETTE.

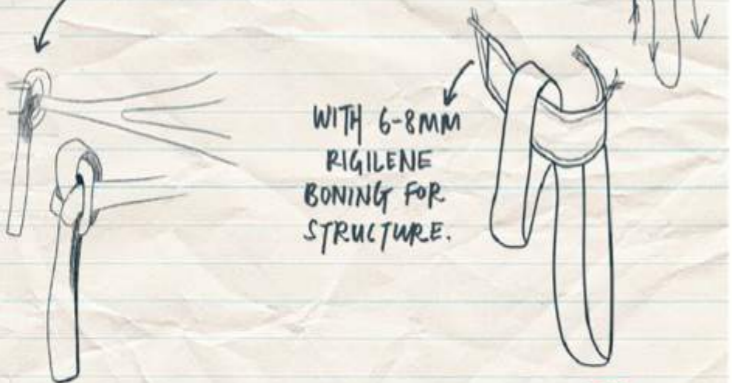


C. Orange lace for appliqué

3CM WIDE  
ELASTIC WAISTBAND



ADJUSTABLE HANDKNITTED  
STRAPS TO BE KNOTTED.



A. Lilac stretch lace  
B. Peach spandex lace



DETAILS



LACE AND  
YARNS W ADDED  
STRUCTURE  
【BONING】



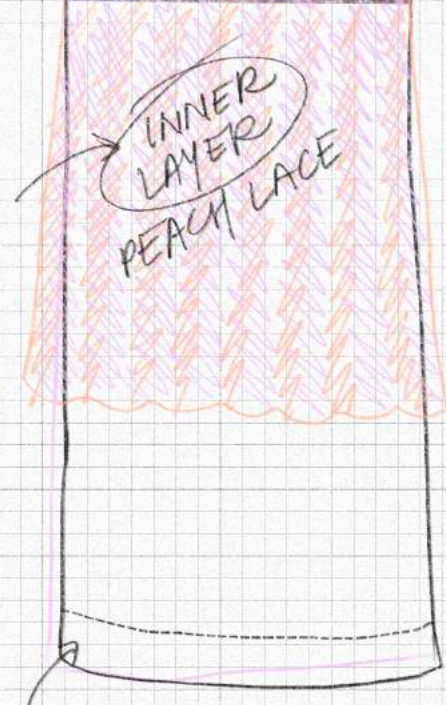


10/05/24

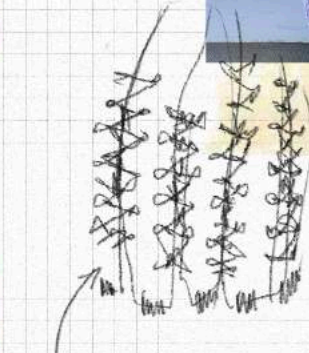
ADD 2-3 LACE  
CROSSES ON EACH  
OF THE SLEEVES!

KNITTED top/ skirt

#COL A.  
#COL B.  
#COL A+C.

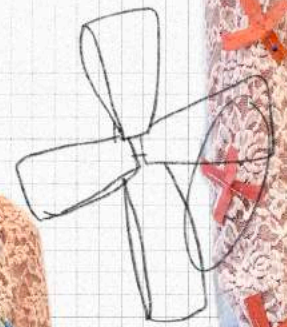


INNER  
LAYER  
PEACH LACE

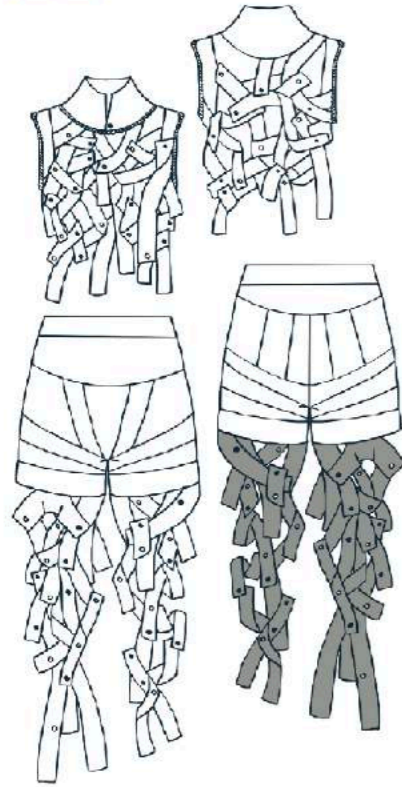


LACE STITCHES  
FROM LOOK 01  
HOOD \*

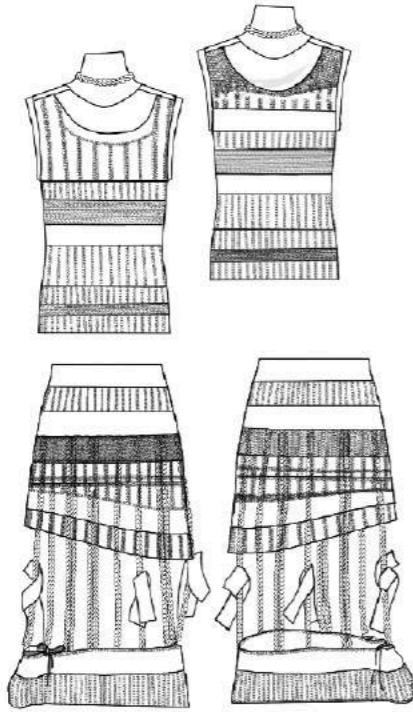
OUTER LAYER  
LILAC STRETCH-LACE  
MID-CALF



LOOK 01



LOOK 02

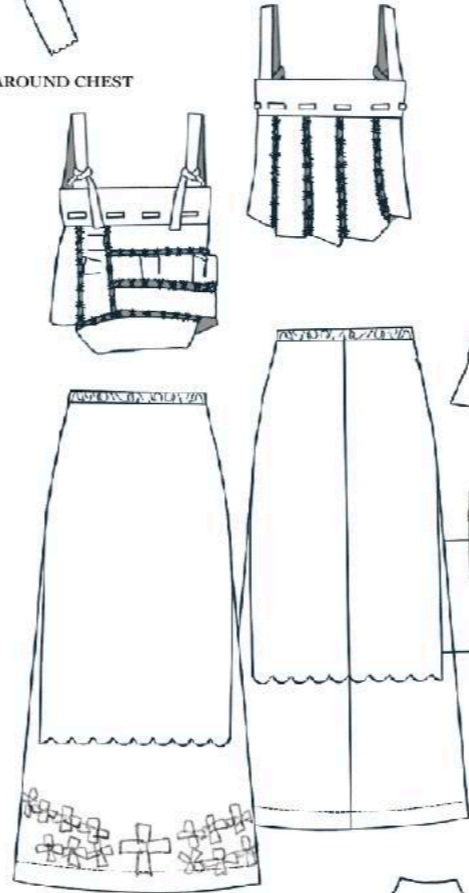


LOOK 04

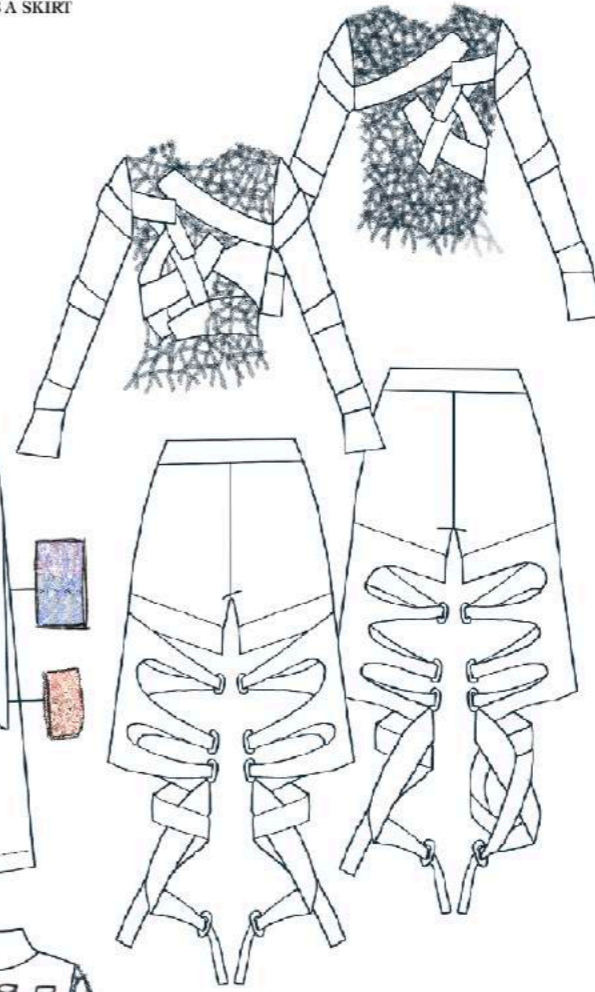


3CM WIDE ELASTIC WAISTBAND AND AROUND CHEST

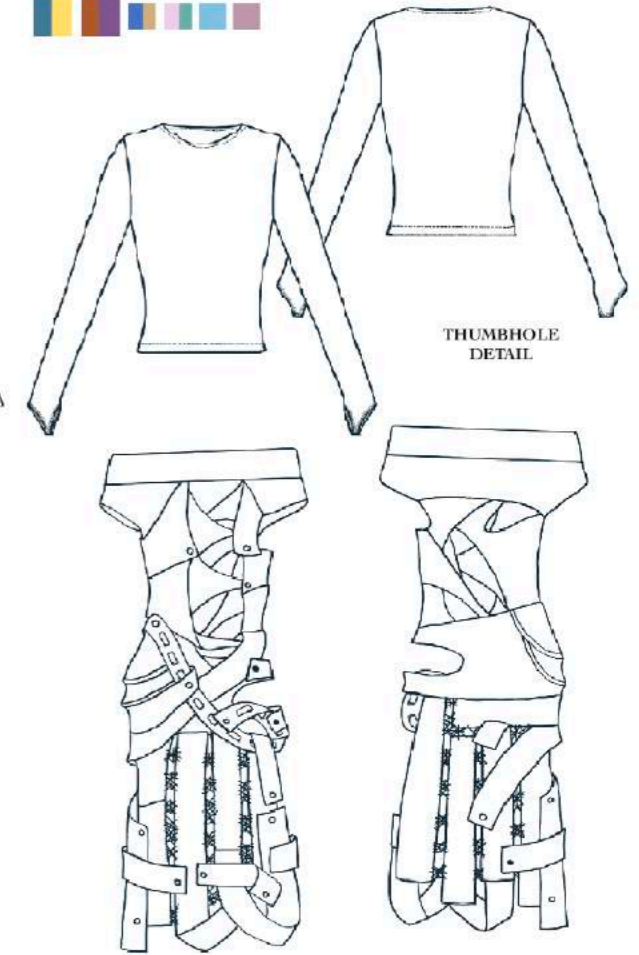
KNITTED PATCHWORK TOP WORKS IN TWO WAYS: AS A TOP OR STYLE AS A SKIRT



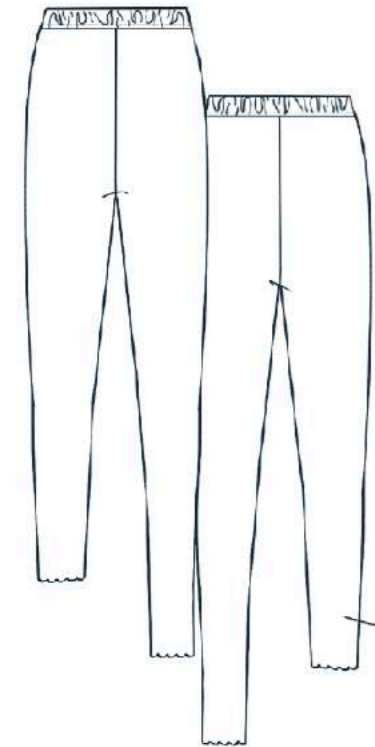
LOOK 05



LOOK 06

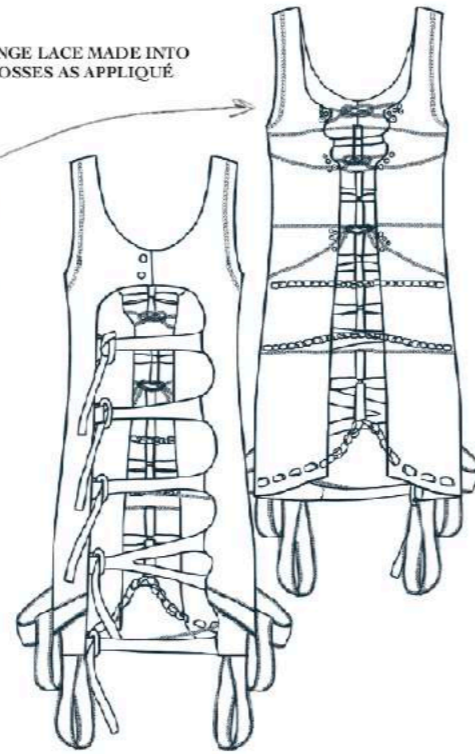


THUMBHOLE DETAIL

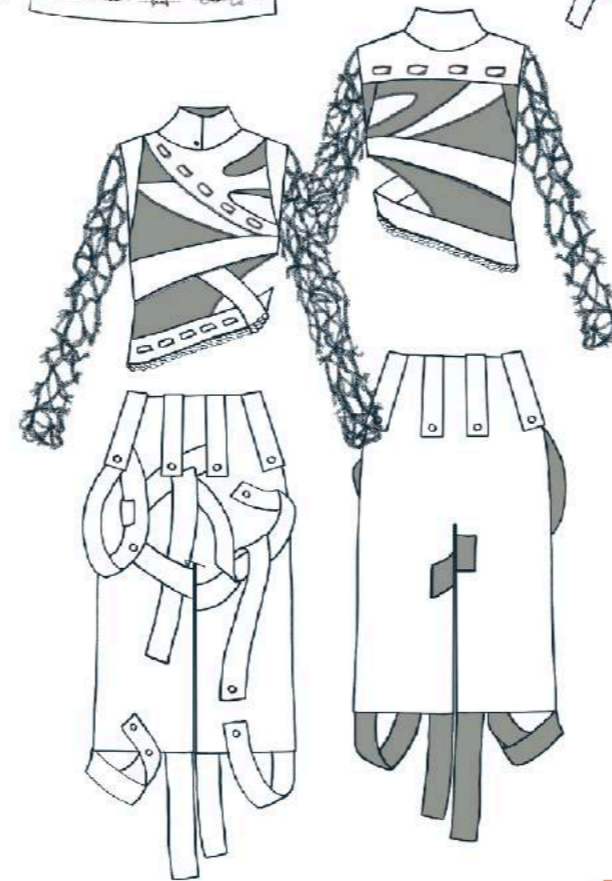


PEACH STRETCHY SPANDEX LACE LEGGINGS

ORANGE LACE MADE INTO CROSSES AS APPLIQUÉ



LOOK 03

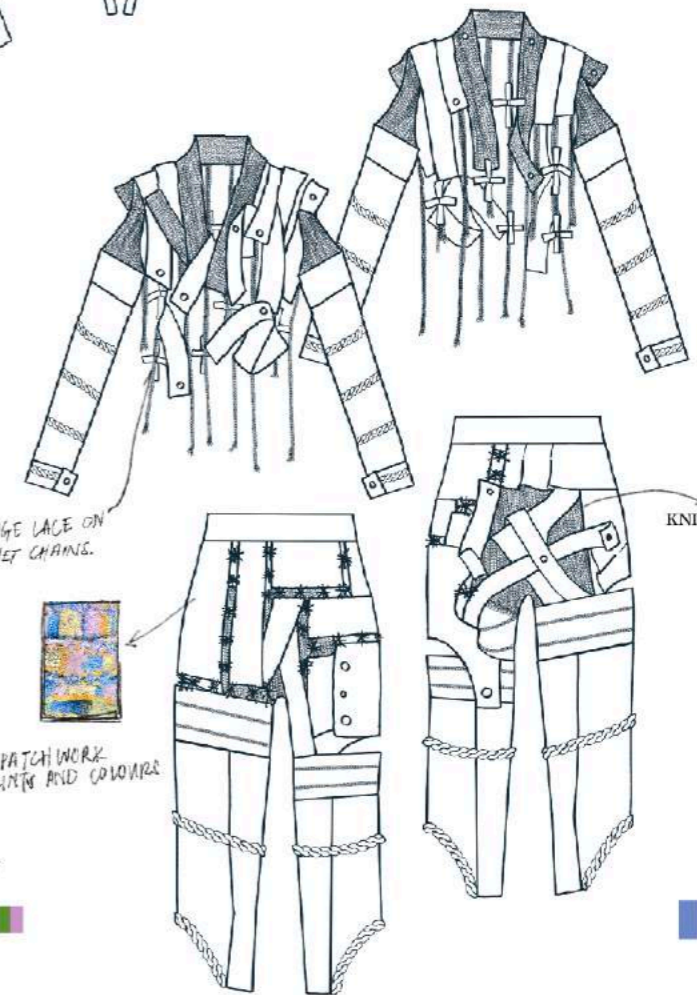


ORANGE LACE ON CROCHET CHANG.



PATCHWORK IN PINK AND COLOURED

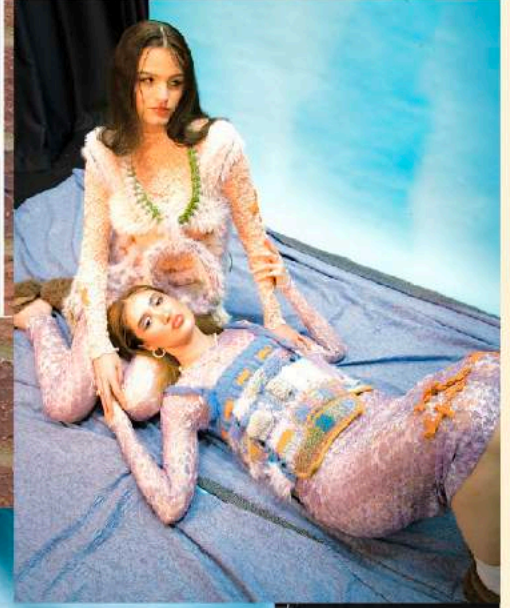
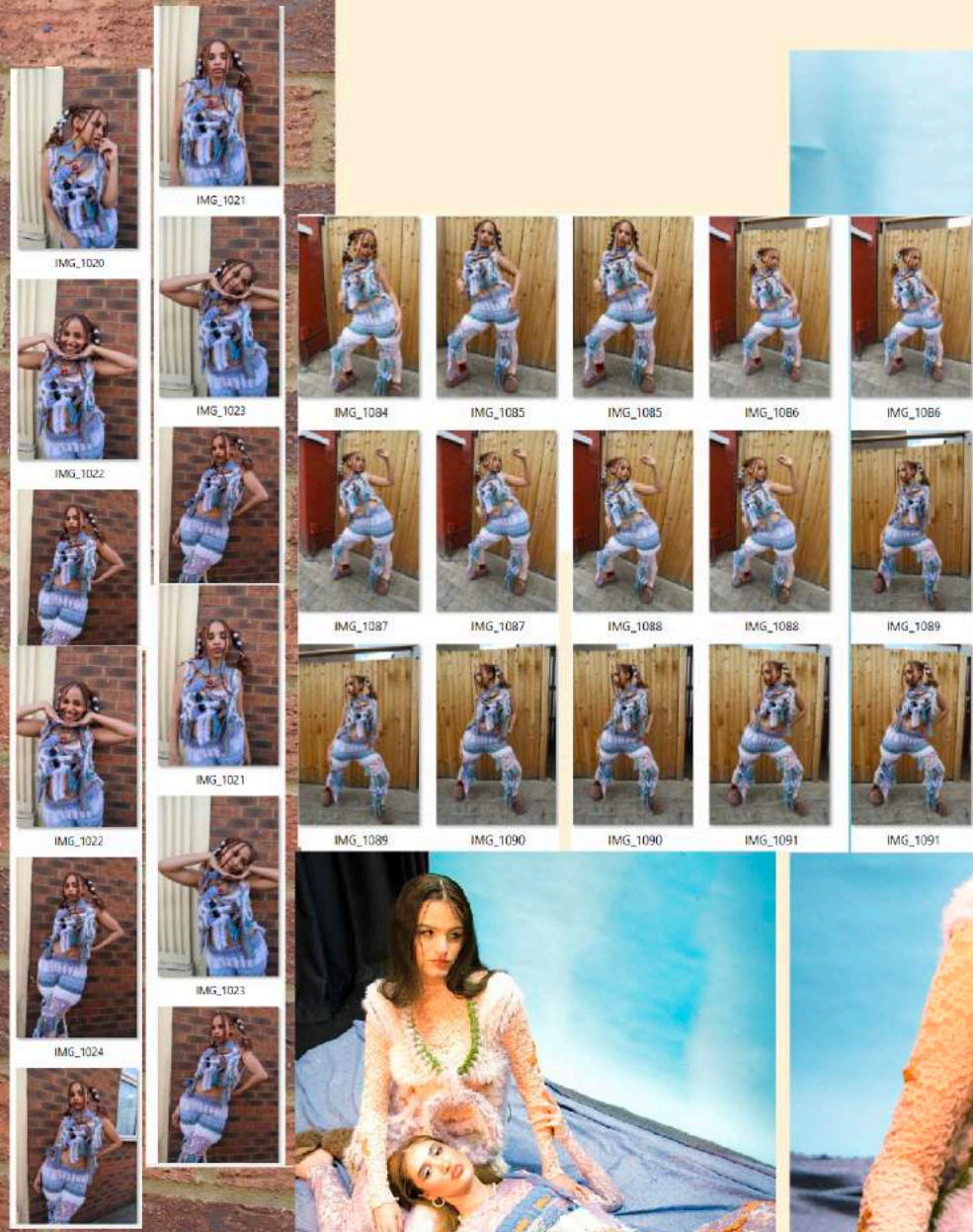
LOOK 07



KNITTED UNDERSHORTS

LOOK 08





A/W2025 KNITWEAR