

Exploring the Globe

Exploring the Globe focuses on the adventures and discoveries experienced while travelling across the world. It highlights a variety of landscapes, iconic landmarks, and the ways we learn about different cultures and geography through travel and exploration.

Target Market:

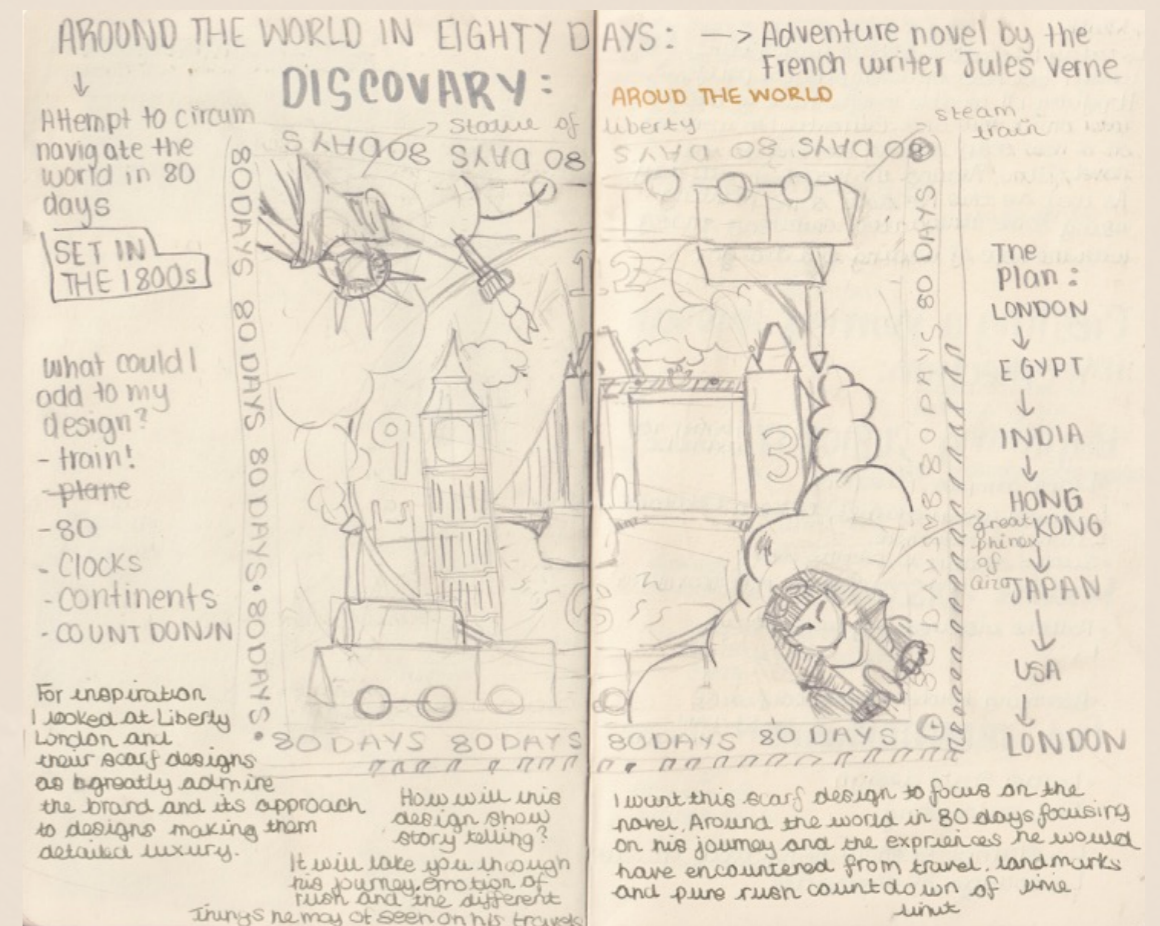
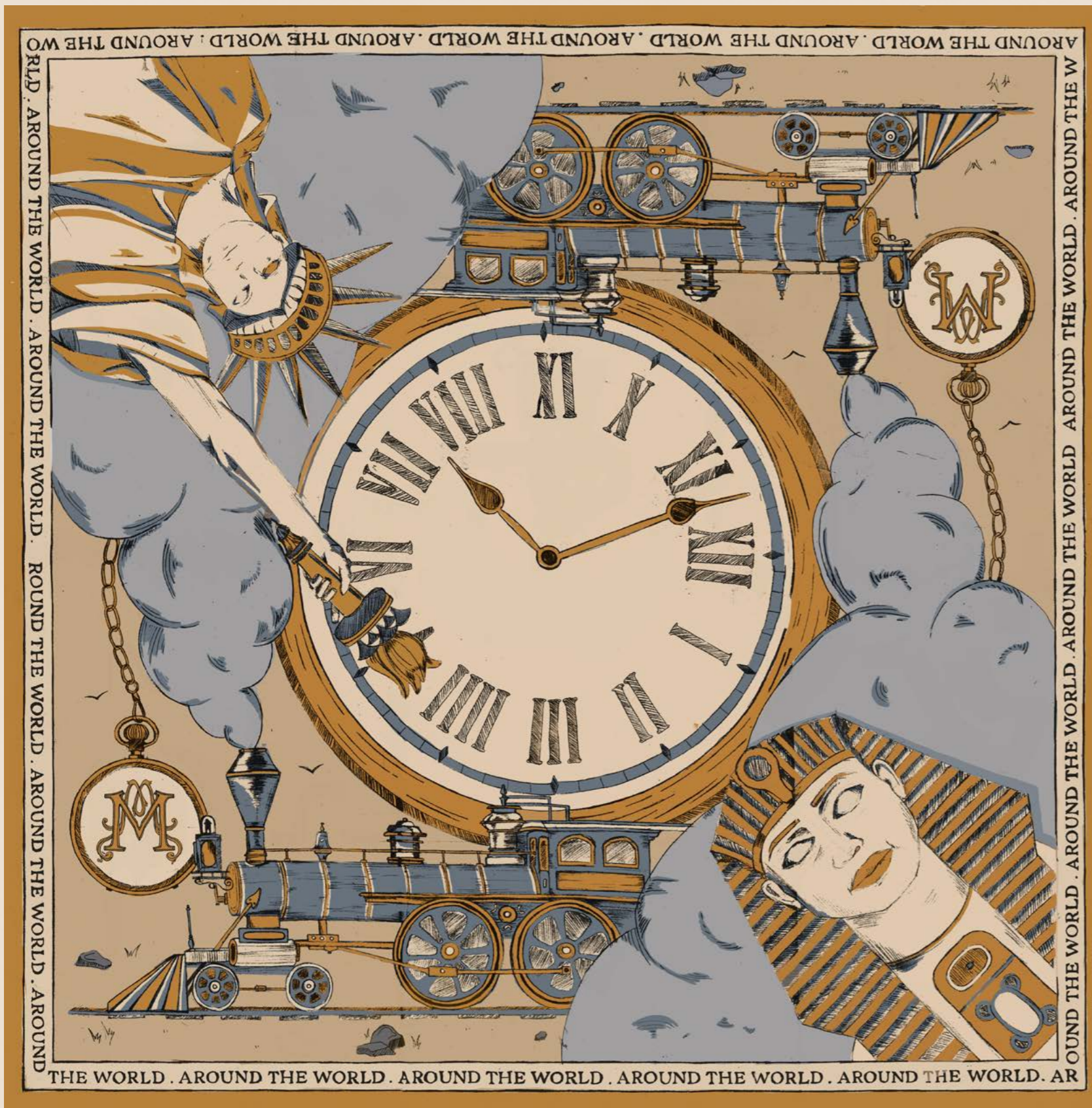
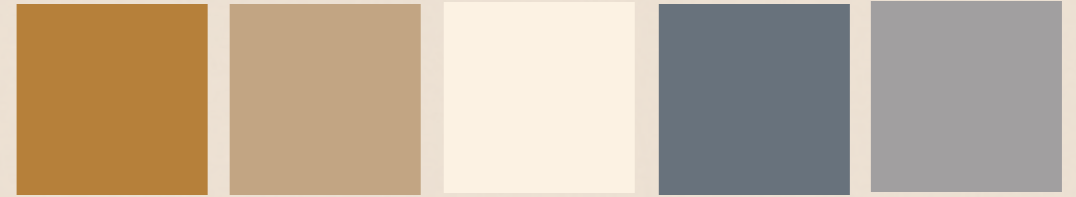
Colour Palette



Fabric Swatches:



'Around the World'



Inspired by the novel Around the World in Eighty Days this design follows the journey of Phileas Fogg as he races against time to travel around the world in just 80 days. The concept explores his adventures, the different places he visits throughout his journey.



Email - mayci.moseley@icloud.com

Instagram - [@mayciileighdesign](https://www.instagram.com/mayciileighdesign)





'Italy with you'



Following an interrailing trip around Italy with my partner, I wanted to highlight some of the iconic sights we saw on our travels and how these experiences created lasting memories that we will cherish forever.

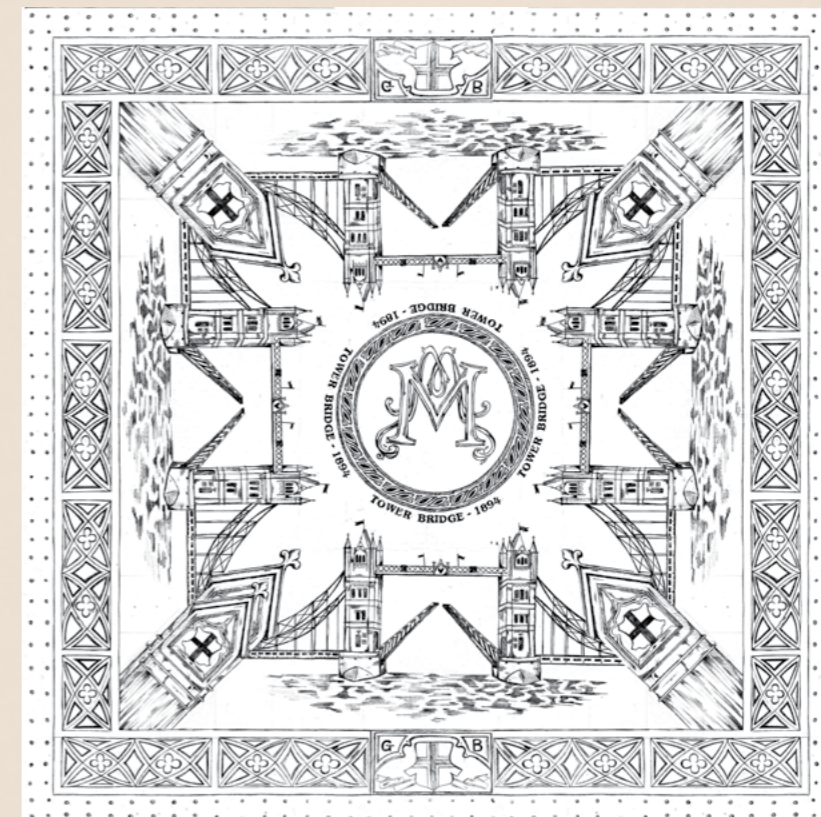
Collaged:



Sketched:



Digitalised:

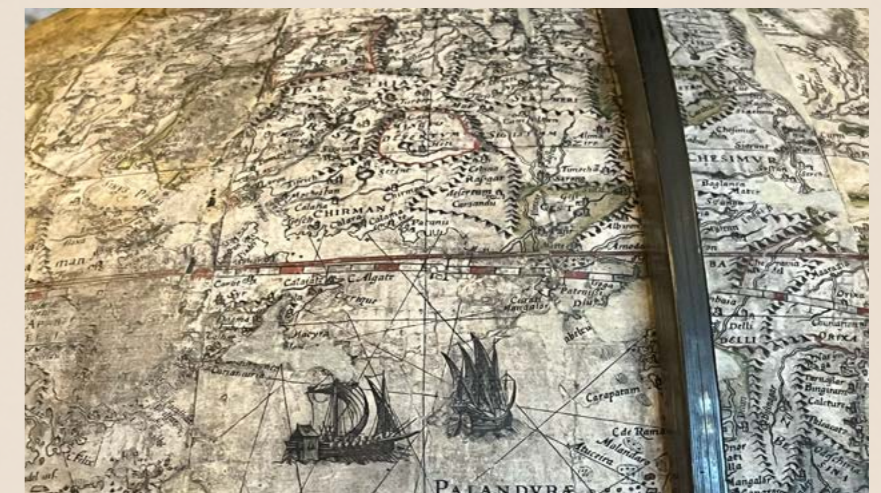
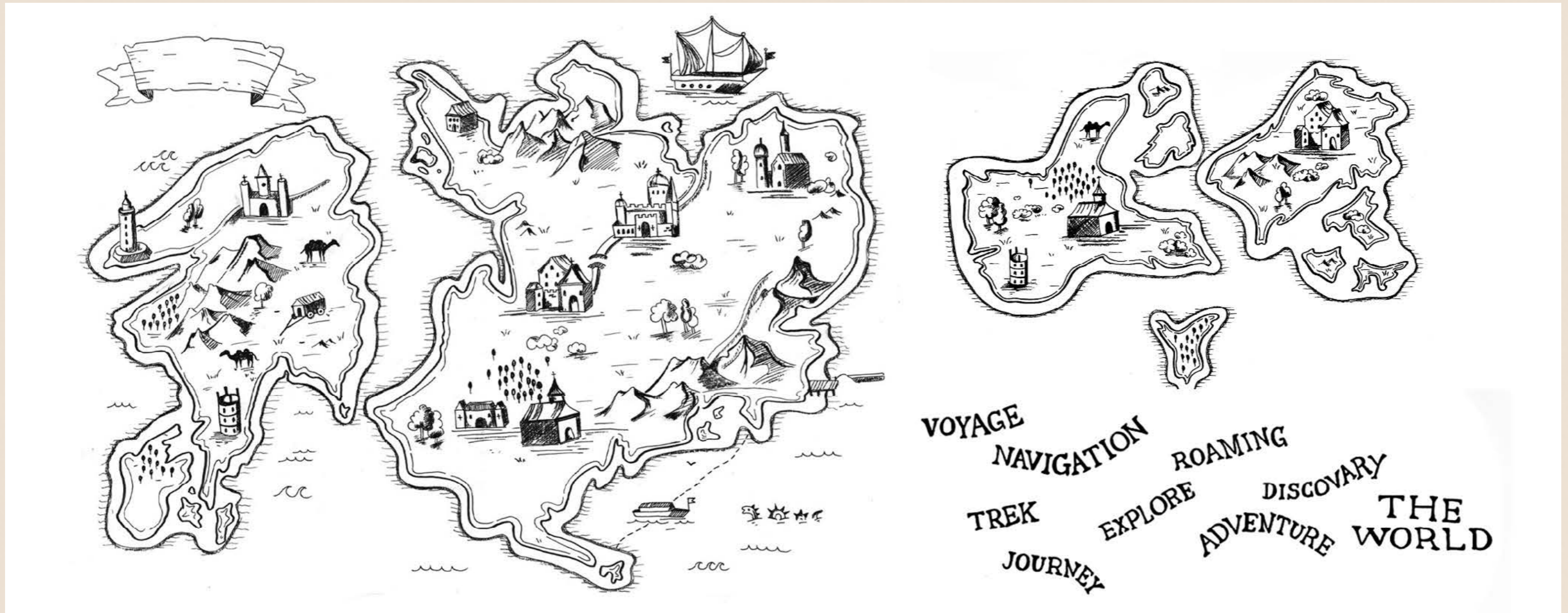


'Details of Tower Bridge'



Looking at my hometown of London, I was drawn to the iconic landmark Tower Bridge, along with its historic significance and unique architectural details.





‘Discovering the unknown’



After visiting Petworth House, I became interested in a globe that mapped the world inaccurately, showing the creator's limited knowledge and curiosity about the unknown. I referenced this in my design by reflecting the globe's distorted view of the world.



Collaged:



Sketched:



Digitalised:



Inspired by hot air balloons in Cappadocia, a place on my bucket list to experience, I aimed to capture their sense of freedom and movement by showing them swaying and drifting beyond the frame.

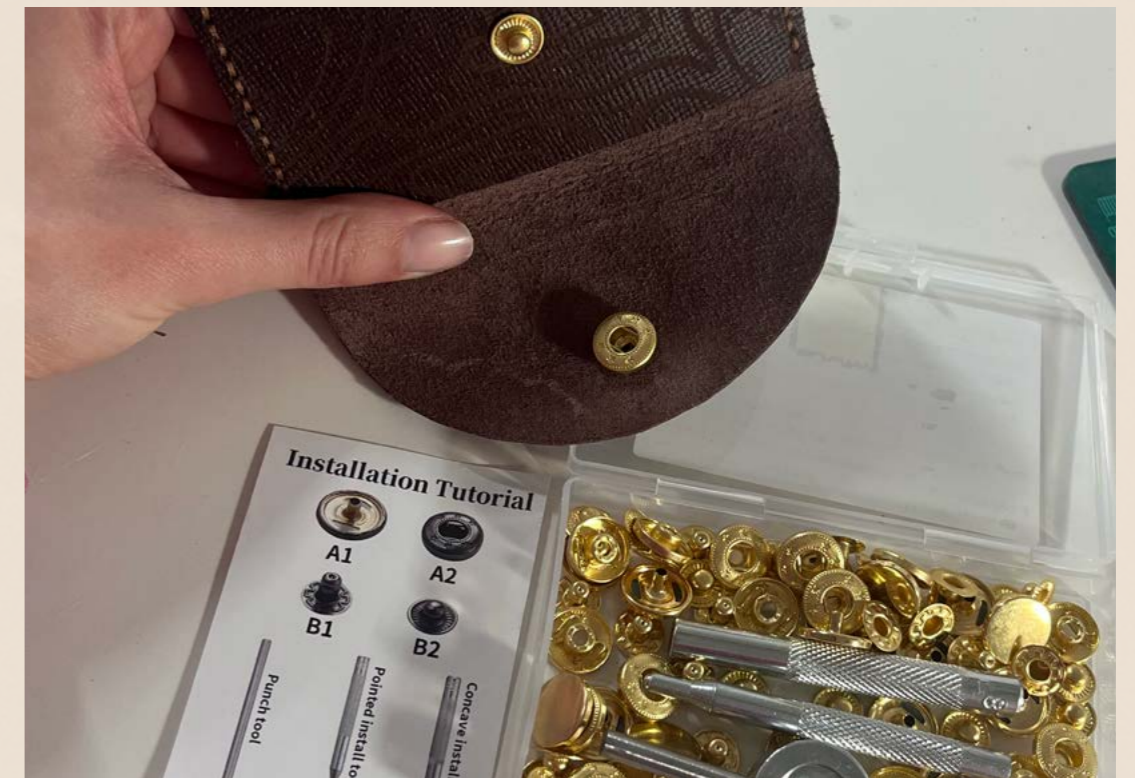


'Up in the air'



Email - mayci.moseley@icloud.com

Instagram - [@mayciileighdesign](https://www.instagram.com/mayciileighdesign)





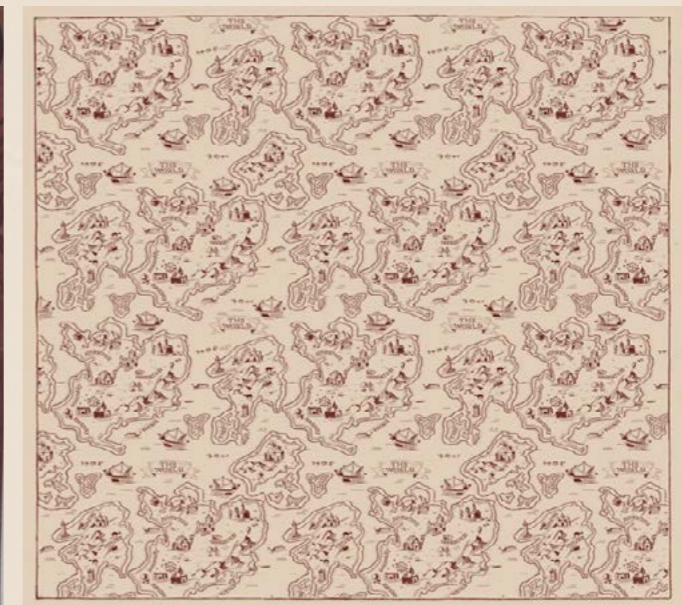
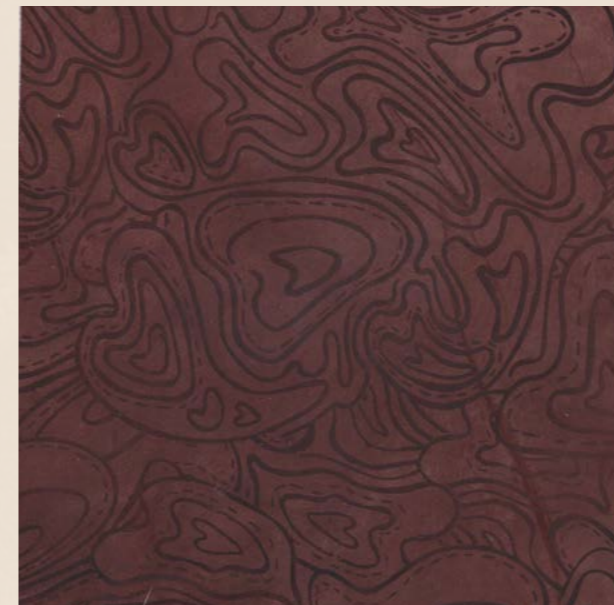
‘Love for navigation’

Spray painted leather laser engraved:



Using real leather, I laser engraved contour lines into the surface to represent the lasting impact travel has through memories, learning, and joy. Inspired by a The Duke of Edinburgh’s Award trip where I used maps with contour lines for navigation, I adapted the shapes into hearts to symbolise a love for travel and exploration.

Exploring the Globe - Collection





Mayci Moseley

Email - mayci.moseley@icloud.com

Instagram - [@mayciileighdesign](https://www.instagram.com/mayciileighdesign)