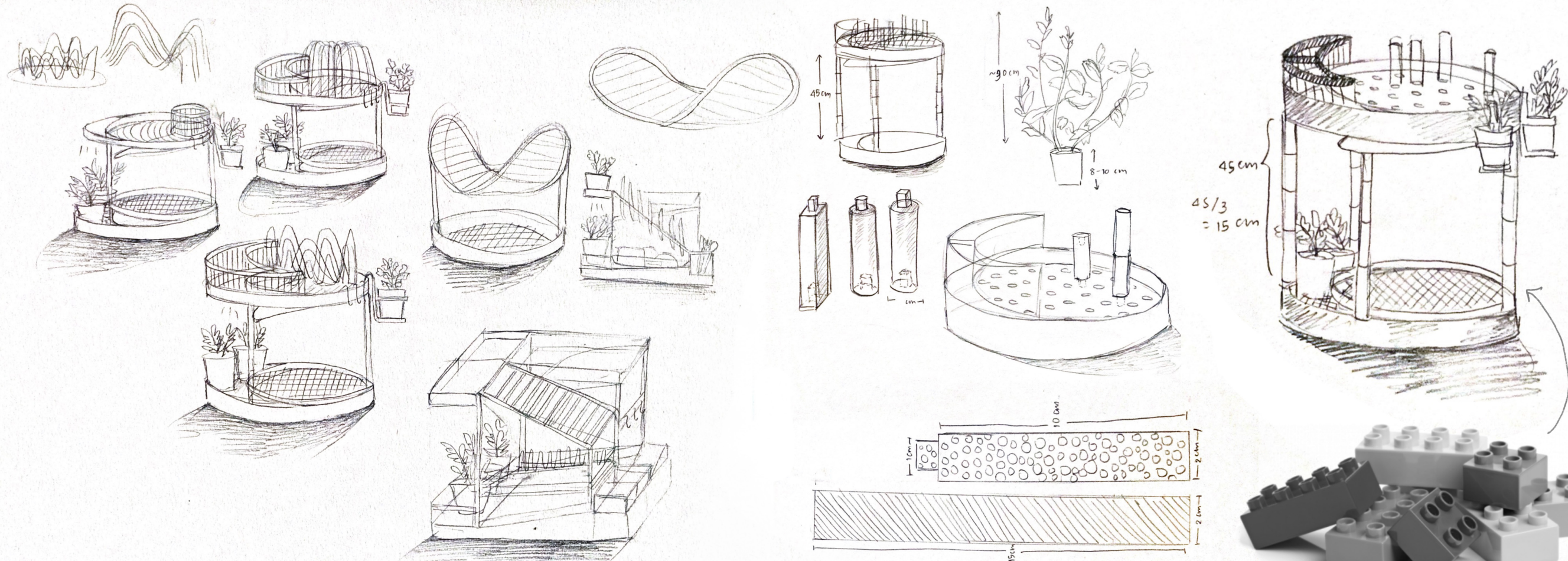


8 weeks
Final Major Project
International Foundation
in Art, Design and Media
October 2020

2021



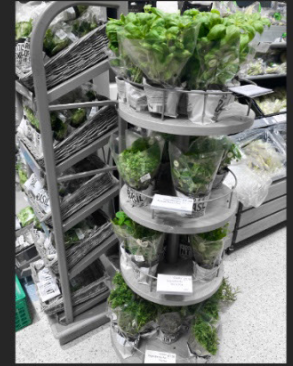
SKETCH IDEATION





DRIBBO

Dribbo – The smart dish drainer is designed to encourage sustainability by reducing plastic packaging from supermarkets and saving water at the same time. It integrates the dish drainer rack with the LED grow light to support indoor plant cultivation. The structure is designed to collect water dripping from crockery and cutlery into the drainer to water users' plants instead of letting it be wasted.

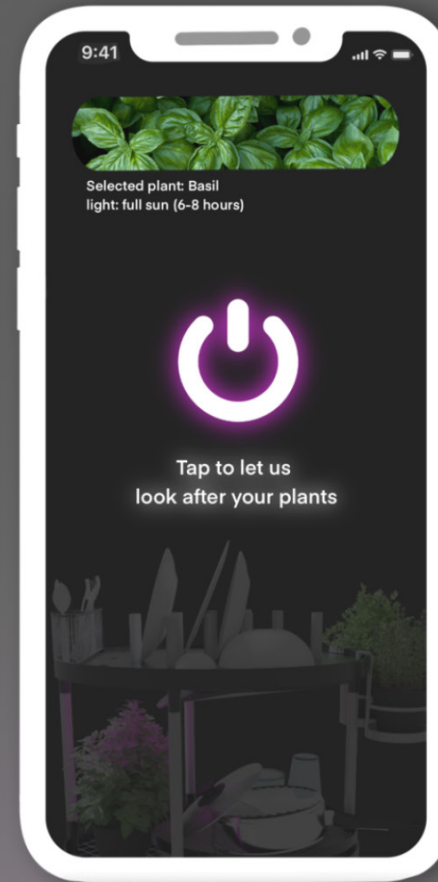
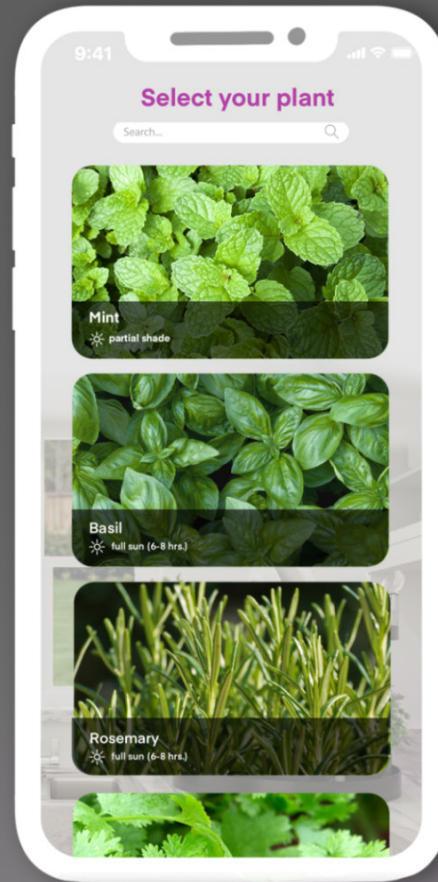
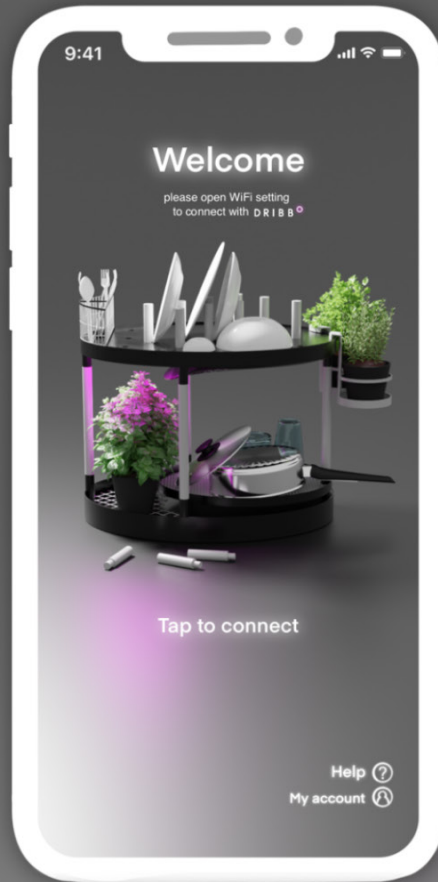


PLANT	SUNLIGHT	WATER
Basil	6-8 hrs. full sun	daily (keep soil moist)
Mint	partial shade	every 3-5 days no wet feet
Coriander	bright indirect sun	daily (keep soil moist)
Thyme	8 hrs. full sun	once a week (drought-resistant herb)
Rosemary	6-8 hrs. full sun	every 1-2 weeks no wet feet
Parsley	partial shade /full sun	daily (keep soil moist)

Through research and observation, herb pots are shown to not only enhance good environment in a kitchen, but they can also help save money and reduce individual plastic pre-cut herbs packaging in a long term. However, planting indoor requires a sufficient amount of light and water for each type of plants.



DribboConnect

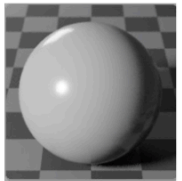
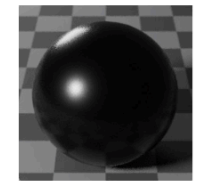
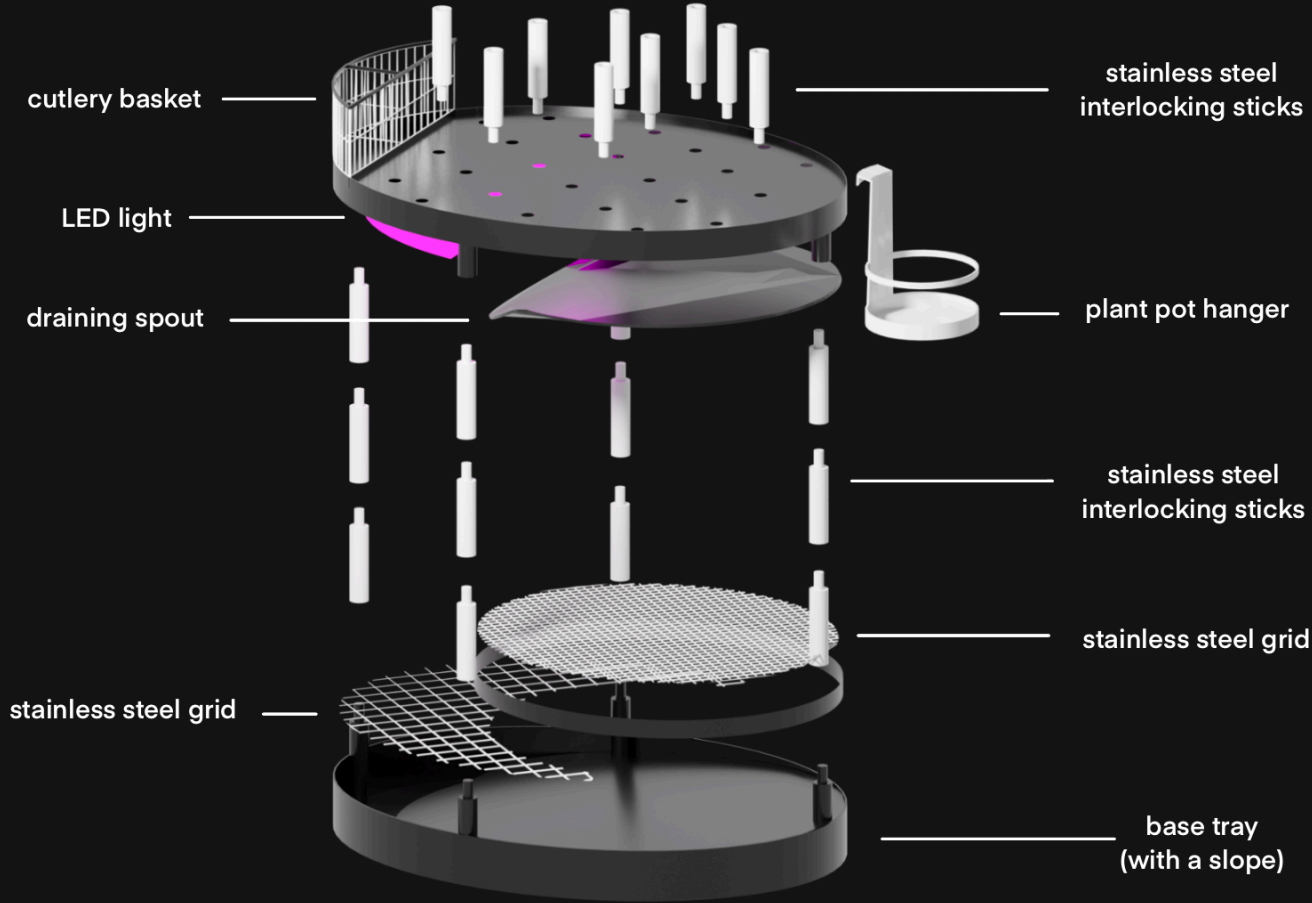
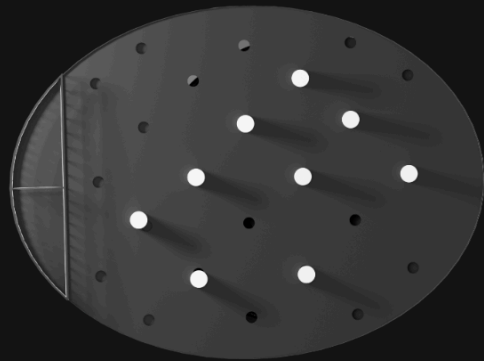
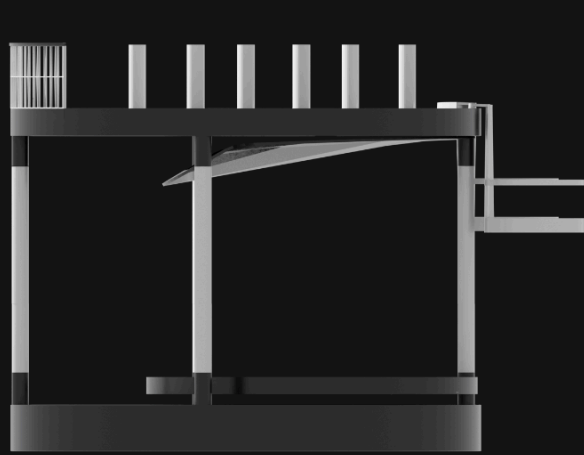


In order to help indoor plant grown effectively, the LED light controlled by the application "Dribbo-Connect" will help users to look after their plants with minimal effort and time. By choosing a plant type on the application, the amount of proper light that suits each type of plants will be set automatically.



The interlocking stainless sticks are designed to make Dribbo adjustable and flexible to fit every customers' needs, while allowing for portable shipping.

Design construction



- stainless steel**
- easily cleaned
 - light weight
 - long lasting
 - recyclable

A PROTOTYPE MAKING PROCESS

