



*Hannah Butler*  
*Print Portfolio*  
*Blooming with Memories*



Vivetta A/W 2019

Giambattista S/S 2020

# Concept



Valentino S/S 2019

Oscar de la Renta S/S 2020

Prabal Gurung S/S 2020

Richard Quinn A/W 2018

'Blooming with Memories' is a creative and commercial interpretation of floral design, inspired by the flowers of my Grandad's garden and a selection of his favourite castle grounds within Kent. Flowers are so fragrant, and their smells are strongly linked with memories, flowers have the potential to activate parts of your brain associated with memory. Experimenting with highly detailed paintings and drawings with a mixture of photography has brought this collection close to my heart with exploring my Grandad's photography passion through print. With showcasing the beauty of flowers through Autumn/Winter and Spring/Summer print sample collections and a silk scarf collection.

# Primary Photography Hever Castle

I was inspired to visit Hever Castle because, I was particularly intrigued by the Rose Garden there. With the planted blocks of colour from palest pink to deep crimson and rich purple, varieties range from the Alba and Bourbon to Hybrid Tea and Floribunda.

I decided to take a selection of close up photographs in different angles to capture the rich colours and unusual shapes of the different flowers Hever Castle has to offer. This is going to be useful in my project because, I have a wide range of photographs to experiment with and draw from and to then potentially make prints for my final collection.

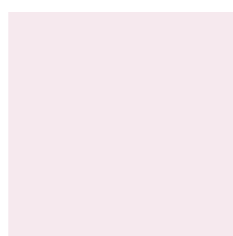


# *Sissinghurst Castle*



I went to visit Sissinghurst Castle for my primary research because, I wanted to take photographs and create drawings and paintings of flowers. This allowed me to explore different flowers and the shapes of the flowers when compared to Hever Castle for a more varied range of research to help me with my Final Major Project. Moving forward I am going to use these photographs as inspiration for more drawings and paintings because, then I will have a wide range of motifs to create new designs for my final collection.

*Summer Breeze  
S/S Collection  
Colour Palette*





*Primary Drawings*



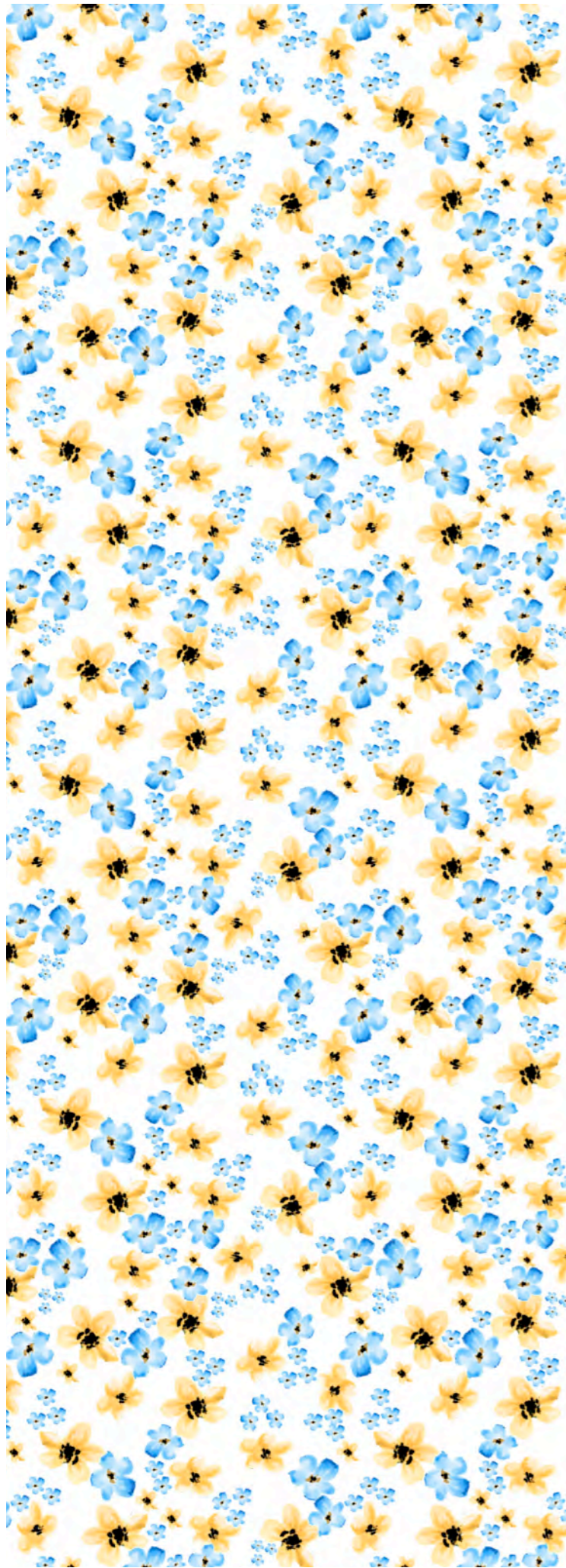






Image used for visualisation  
- Shein



Image used for visualisation  
- Shein





Image used for visualisation  
- Shein



Image used for visualisation  
- Shein



*Garden Days  
S/S Collection  
Colour Palette*



*Primary Drawings*







Image used for visualisation  
- Shein



Image used for visualisation  
- Shein



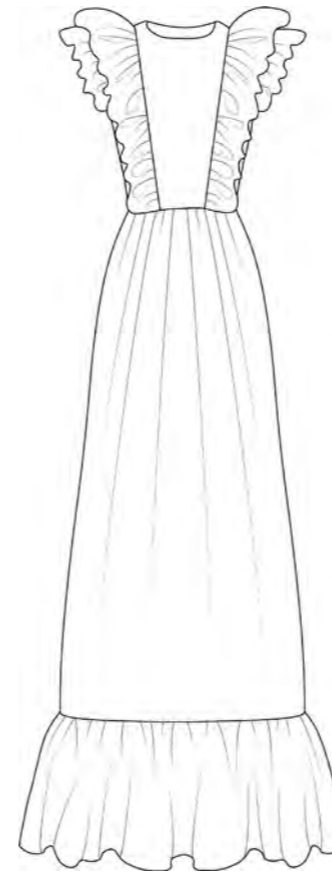
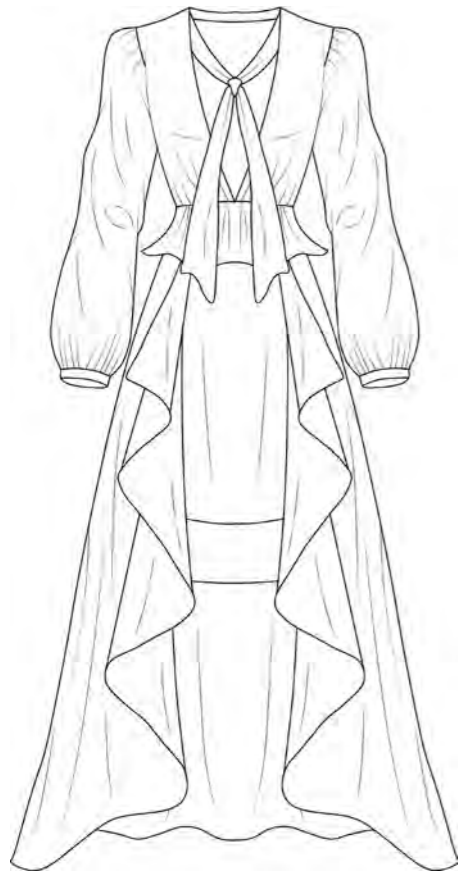
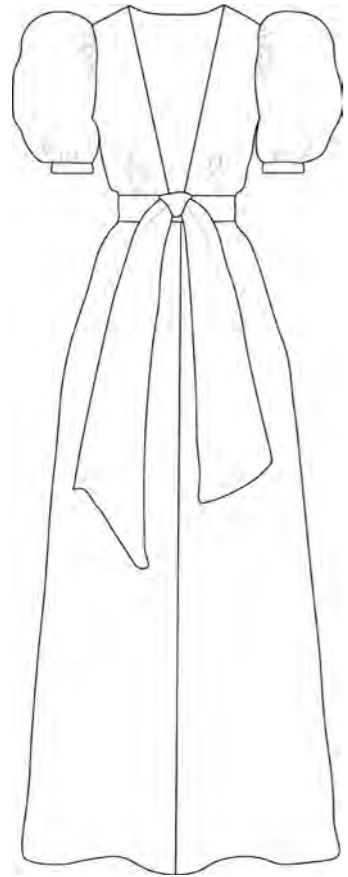




Image used for visualisation  
- Shein



Image used for visualisation  
- Shein



*Spring/Summer Collection  
Range Plan*

*Square Scarf Collection*

