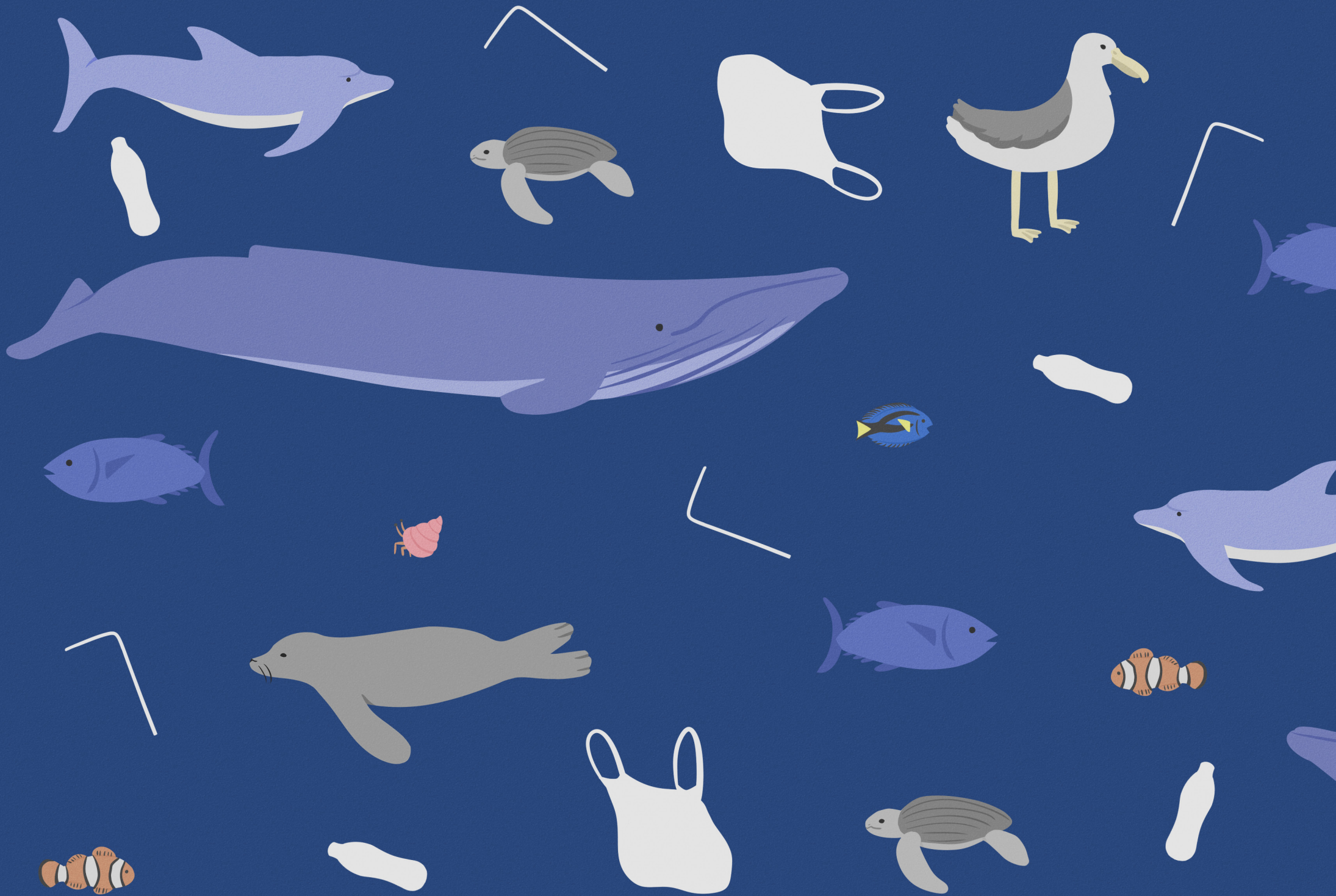
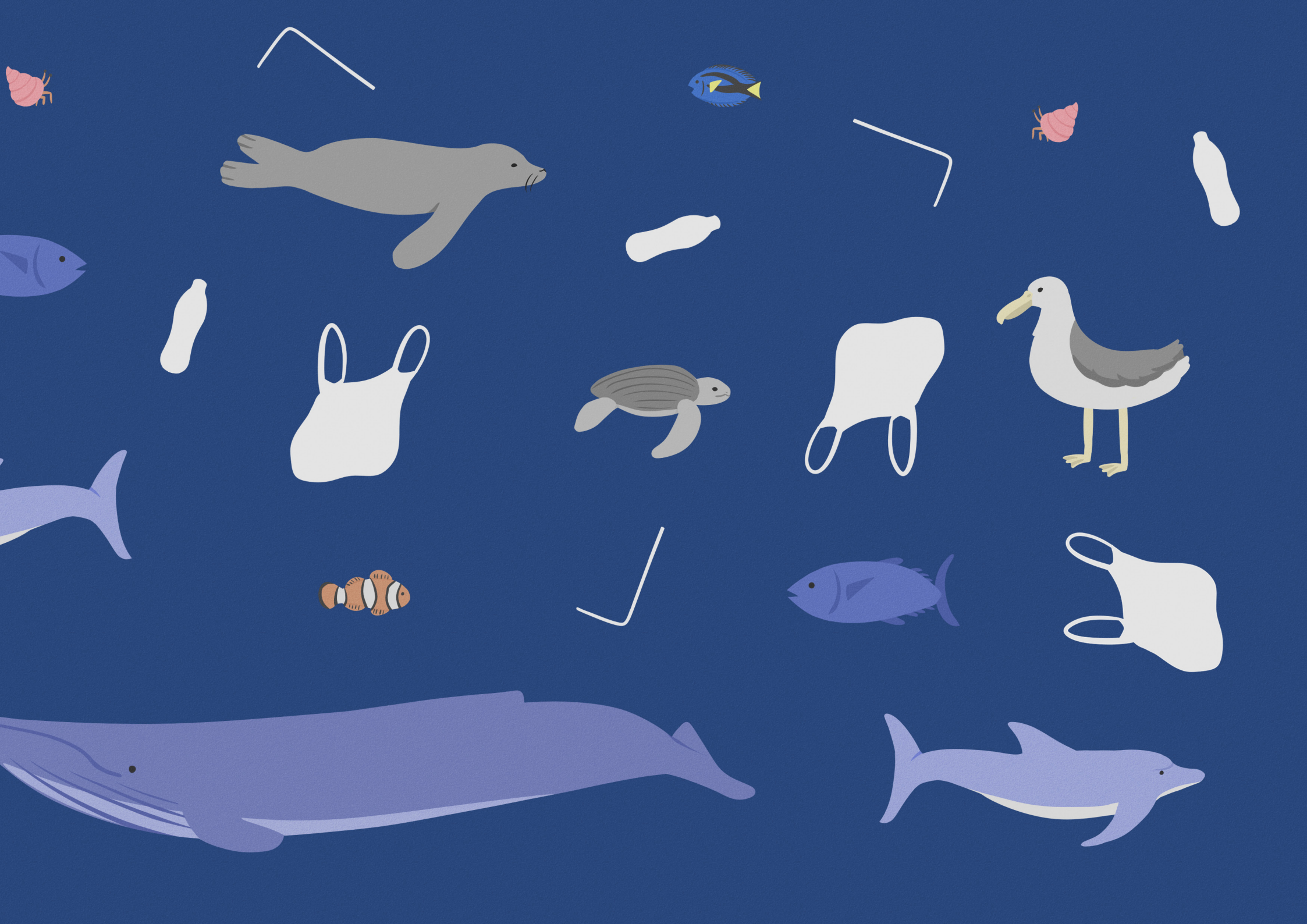


PLASTIC OCEANS

written and illustrated by
Wen-Yi Yap



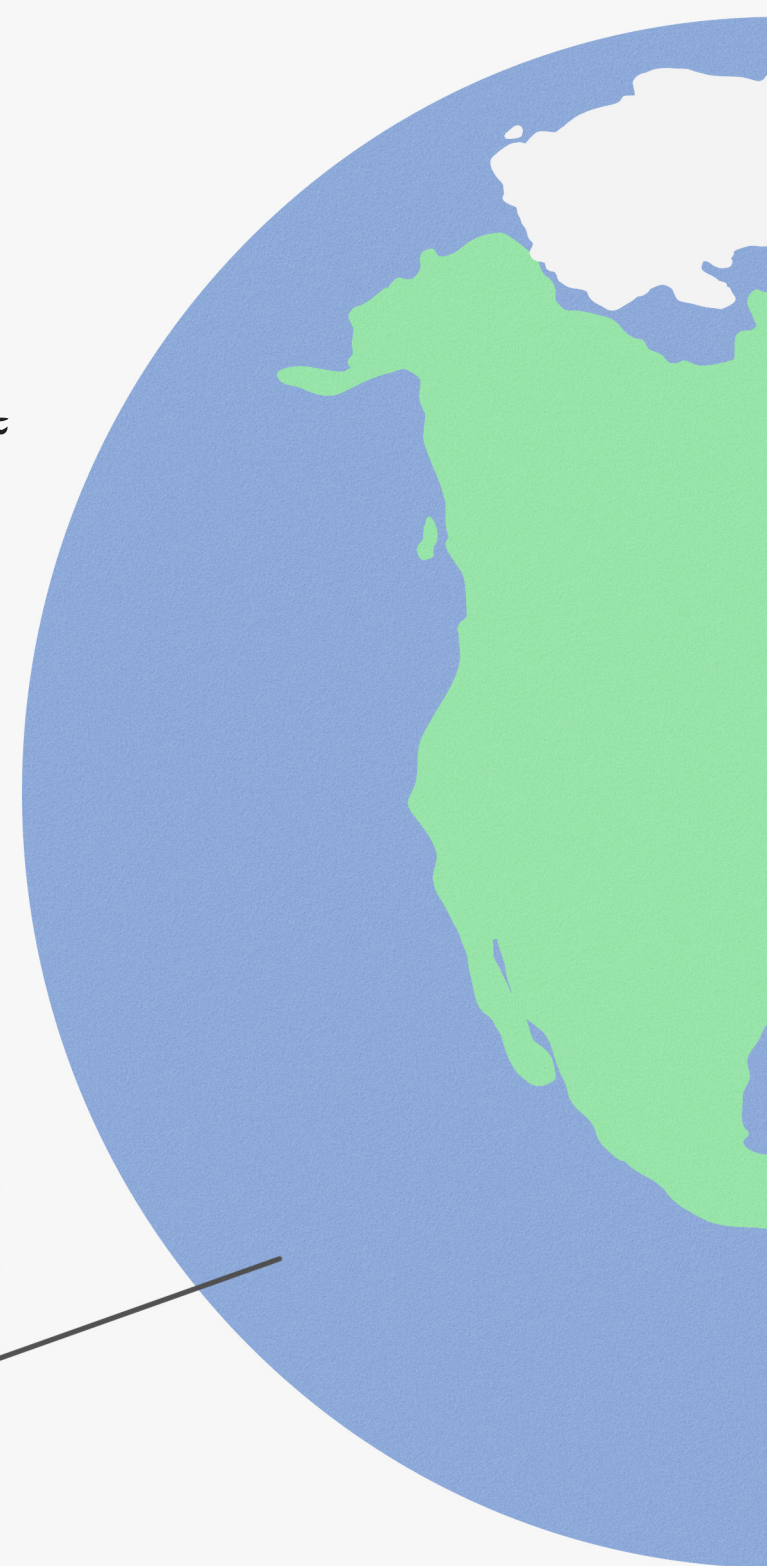
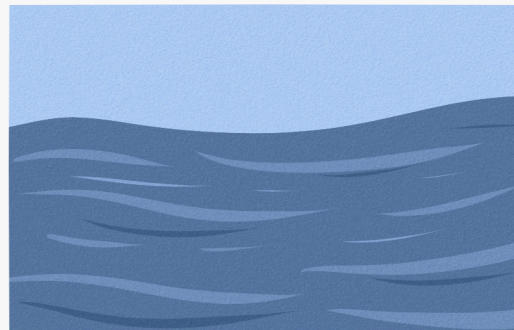




This is our Earth.

The Earth is made up of lots of different habitats. They are homes for many different animals.

The ocean is vast and endless.
It covers around 70% of our planet!





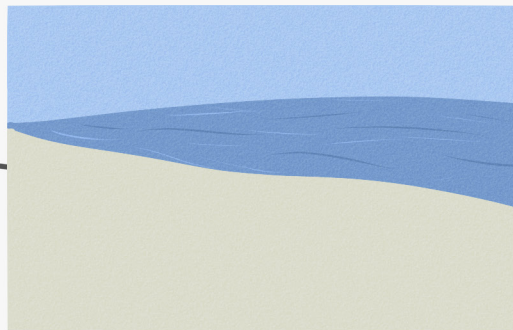
Antarctica

It's very cold here, with lots of icebergs and snow!



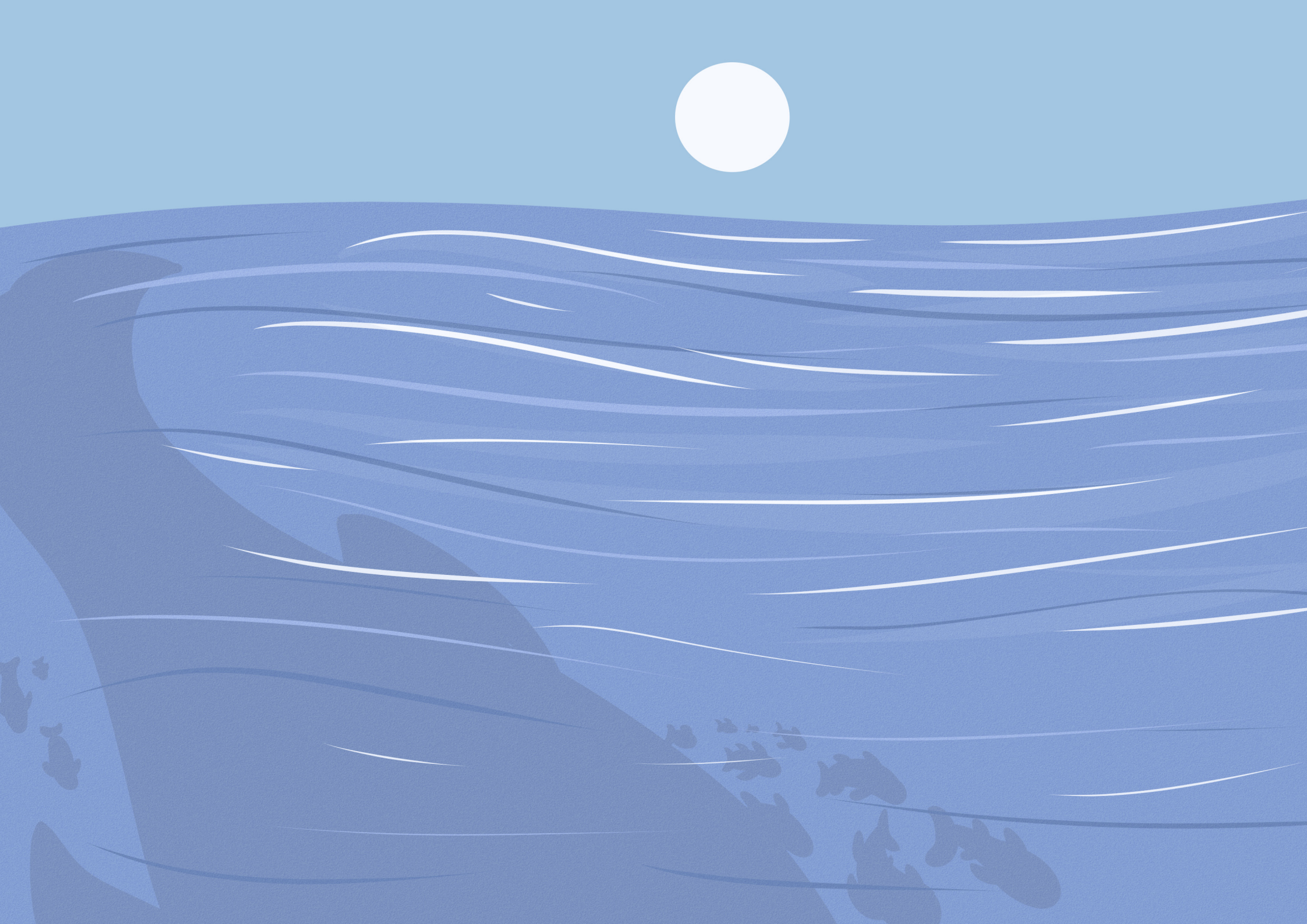
Forests

Forests are rich in plants and wildlife.



Tropics

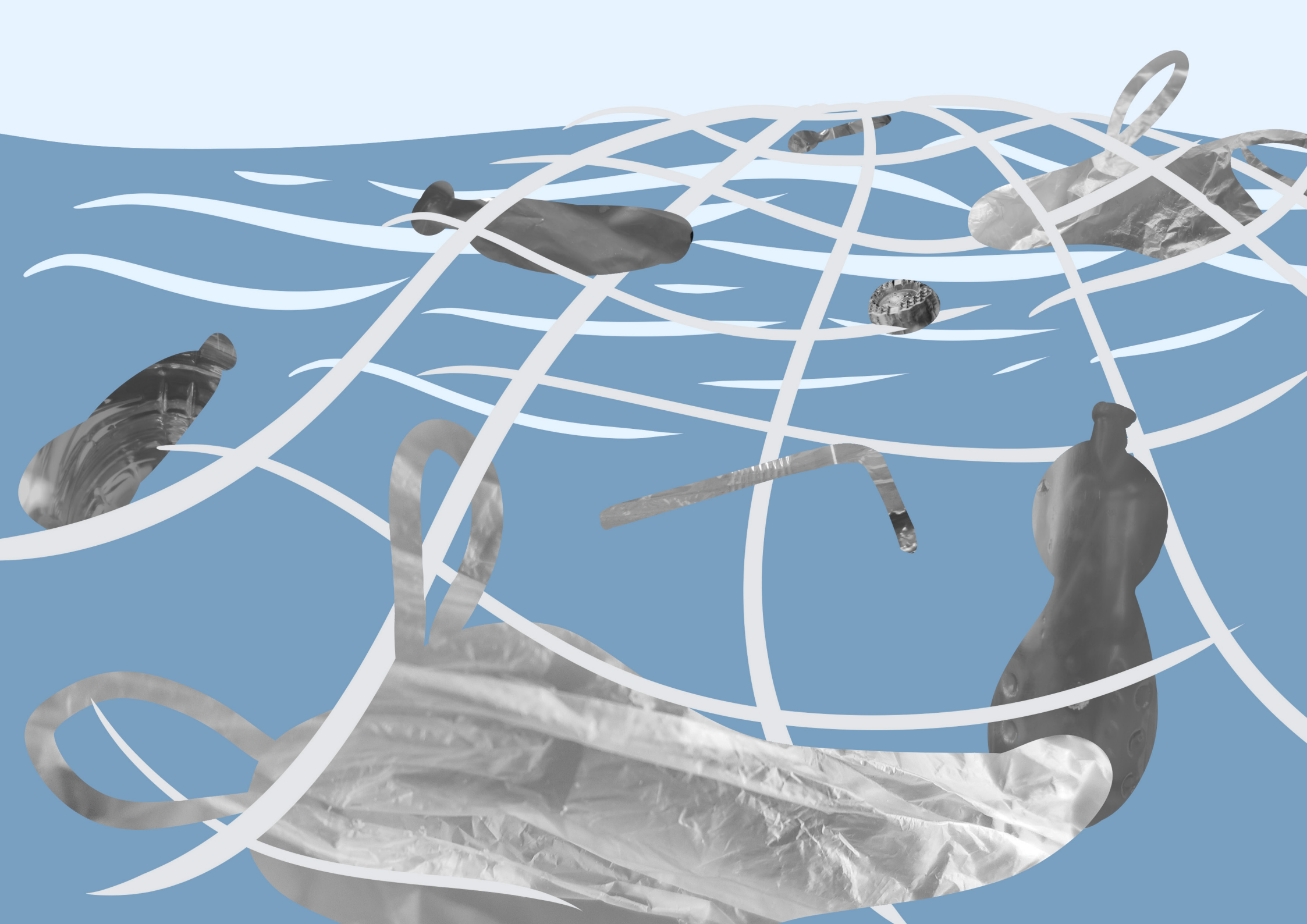
These areas are really hot with lots of beaches.




These areas of water are very important to life on Earth.

All sorts of beautiful animals live in the ocean.

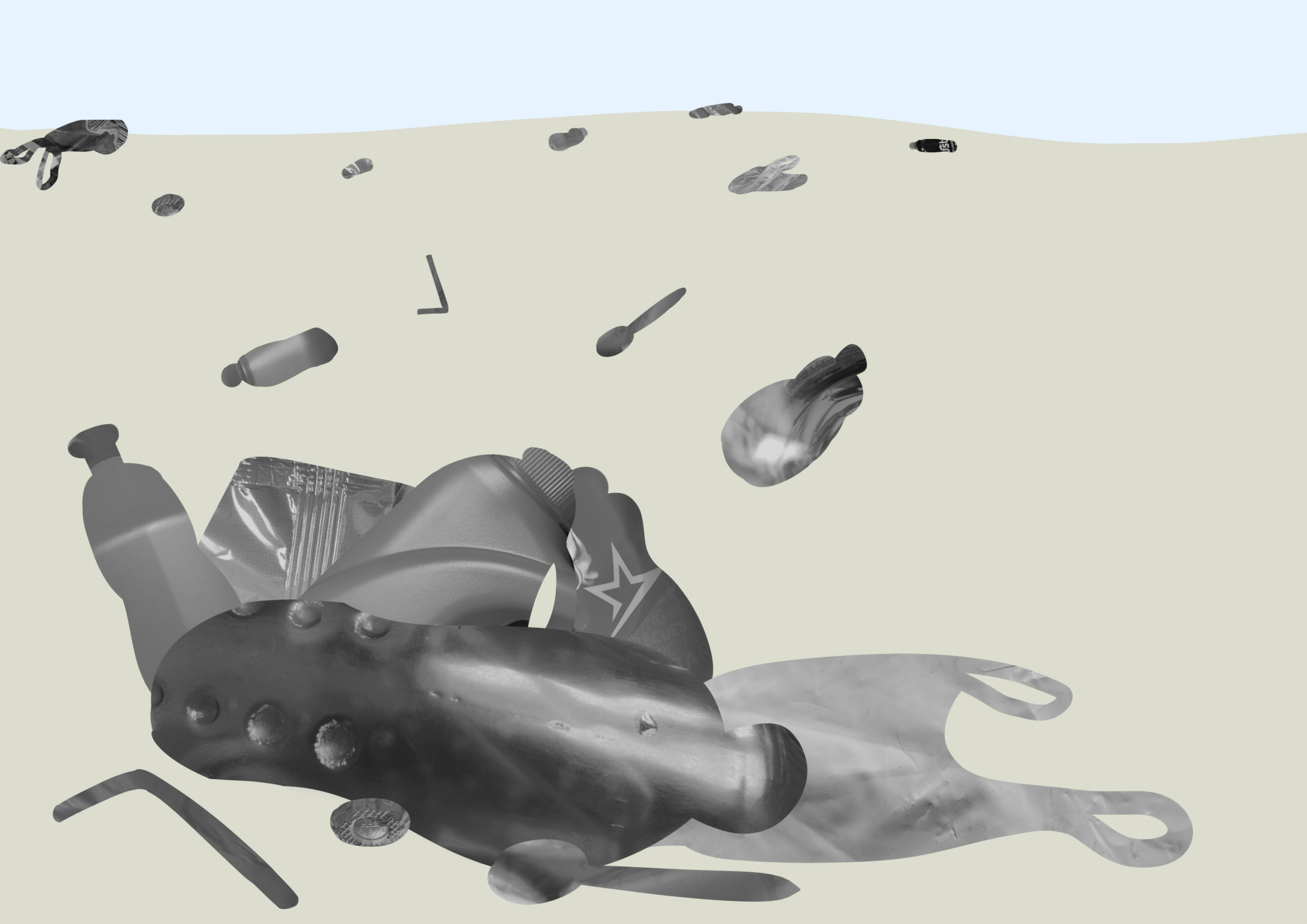
Many sea creatures such as whales, sharks, dolphins, fish and seals depend on this water, as it is their home.




The background features a blue gradient with white, stylized wavy lines representing ocean waves. On the left side, there are several white, curved lines that look like tangled plastic or fishing gear. A small, realistic image of a piece of weathered, grey plastic is floating in the water on the left. In the bottom right corner, there is a small, realistic image of a clear plastic bottle cap.

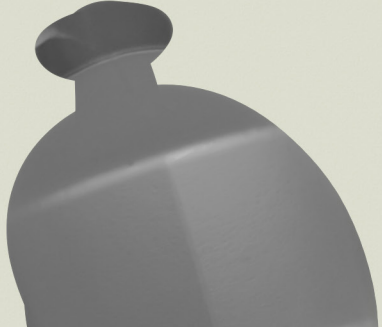
Humans have heavily polluted
the ocean with our plastic waste.

Many of these products are single use.
They are only used for a few seconds or minutes,
but live on for hundreds of years after they are
thrown away.



An illustration of a beach scene. The top part shows blue waves crashing onto a sandy shore. The sand is a light beige color. In the middle of the sand, there is a small, dark, circular object that looks like a coin or a small piece of plastic. The text is written in a handwritten style over the sand.

When plastics
reach the ocean, they break down
into smaller pieces called microplastics.

A dark, rounded bottle with a cap, partially visible in the bottom left corner of the page.

These pieces can become even
smaller than your fingernail! When they
become this small, it is almost impossible to
get them out of the ocean.

An illustration of the ocean with a large blue whale on the left, a dolphin on the right, and a school of bluefin tuna at the bottom. The whale is shown in profile, swimming towards the right. The dolphin is also shown in profile, swimming towards the left. The tuna are depicted as a group of small fish swimming together. The background is a gradient of blue, representing the water.

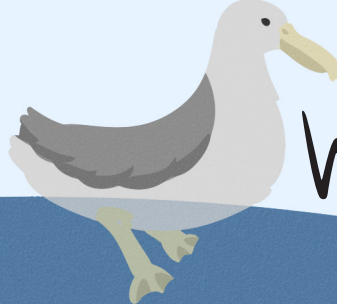
Blue Whale

Dolphin

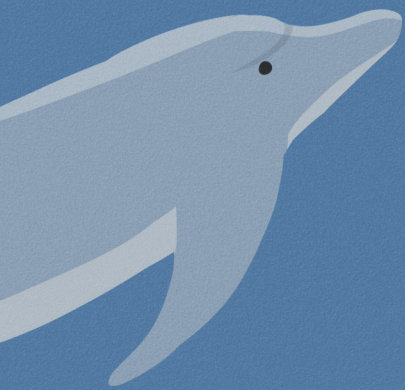
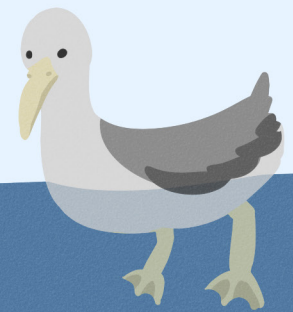
Bluefin

Tuna

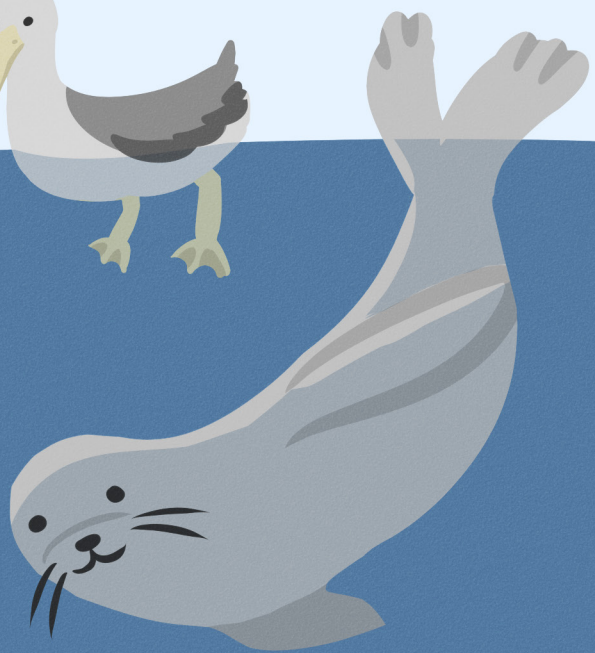
Let's take a closer look
at some of the animals that live in
the ocean, and how plastic
can affect them.



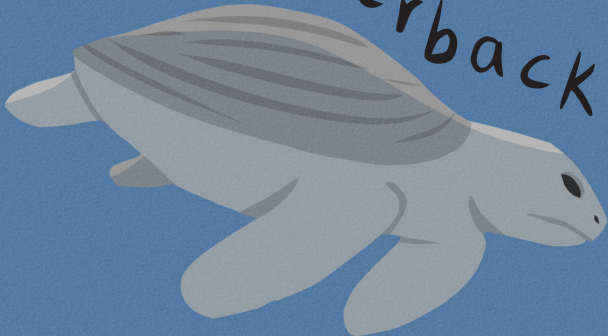
Wandering Albatross



Seal



Leatherback



Turtle

Tropical Fish



Hermit Crab

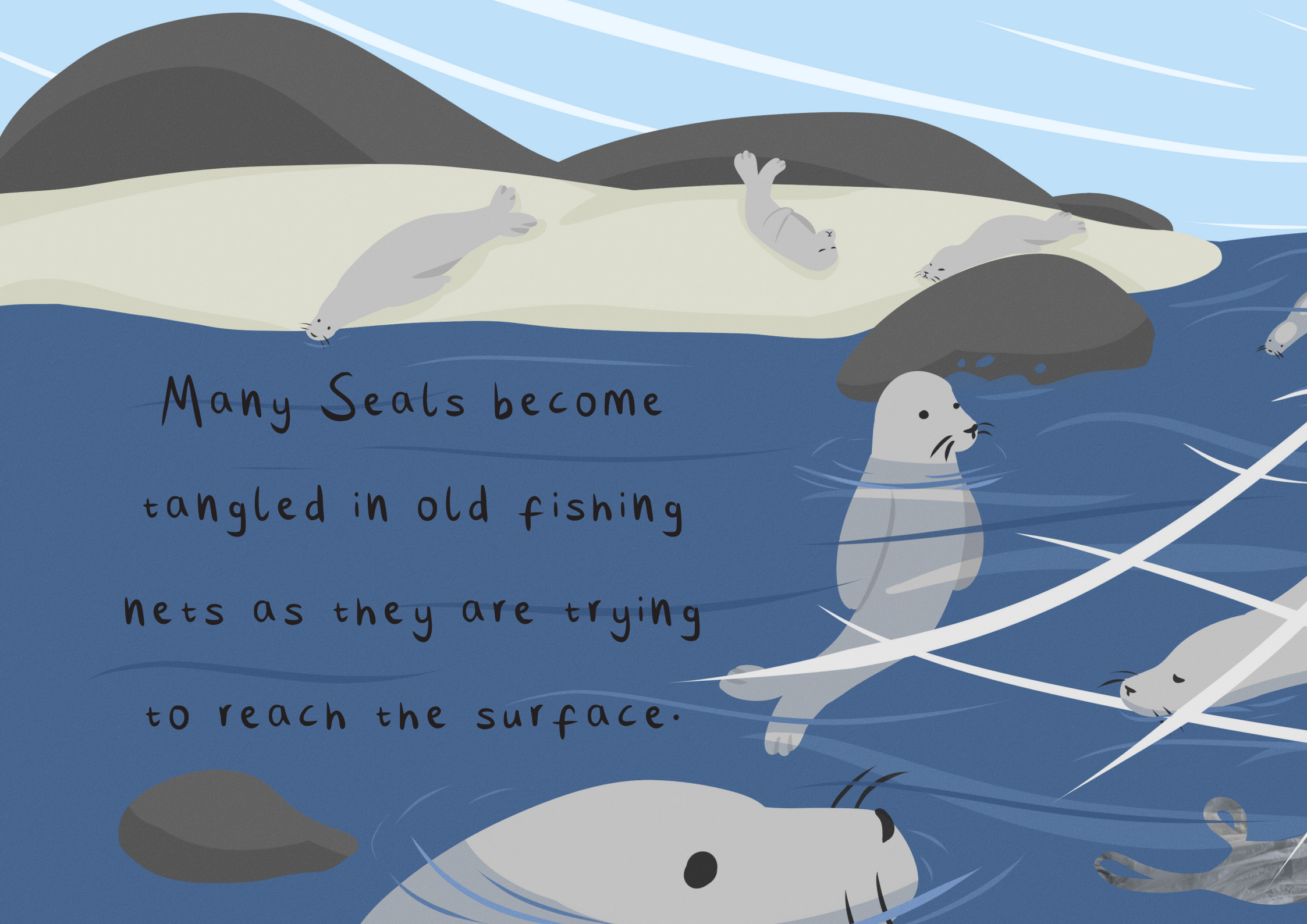


An illustration of a blue whale in a dark blue ocean. The whale is shown from a side profile, swimming towards the right. Its body is covered in dark blue, diagonal stripes. In the background, there are several smaller blue fish. To the right of the whale, there is a white plastic bag and a brown plastic bottle, representing pollution. The text "This is the Blue Whale, the largest animal on the planet!" is written in white, handwritten-style font in the lower-left quadrant of the image.

This is the Blue Whale,
the largest animal on the
planet!



Since whales are so big, it can be hard for them to see what they are eating. So, plastic is very dangerous for them!



Many Seals become
tangled in old fishing
nets as they are trying
to reach the surface.

The same problem can happen to Dolphins.



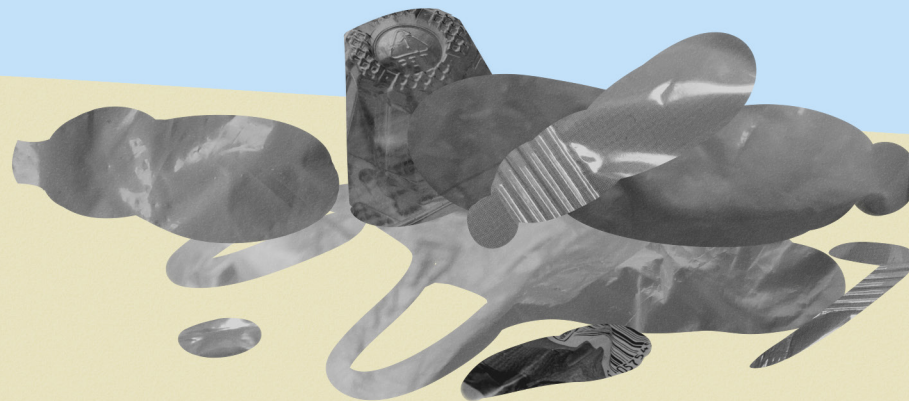
An illustration showing a line of five hermit crabs on a sandy beach. From left to right: a large grey crab with a white shell, a medium purple crab with a pink shell, a large red crab with a dark red shell, a small pink crab with a pink shell, and a small orange crab with an orange shell. Each crab has two black dots for eyes and four brown legs. They are arranged in a slightly curved line, suggesting a trading sequence. In the background, there are several dark grey rocks of various sizes under a light blue sky.

Hermit Crabs
form a straight
line when trading shells.

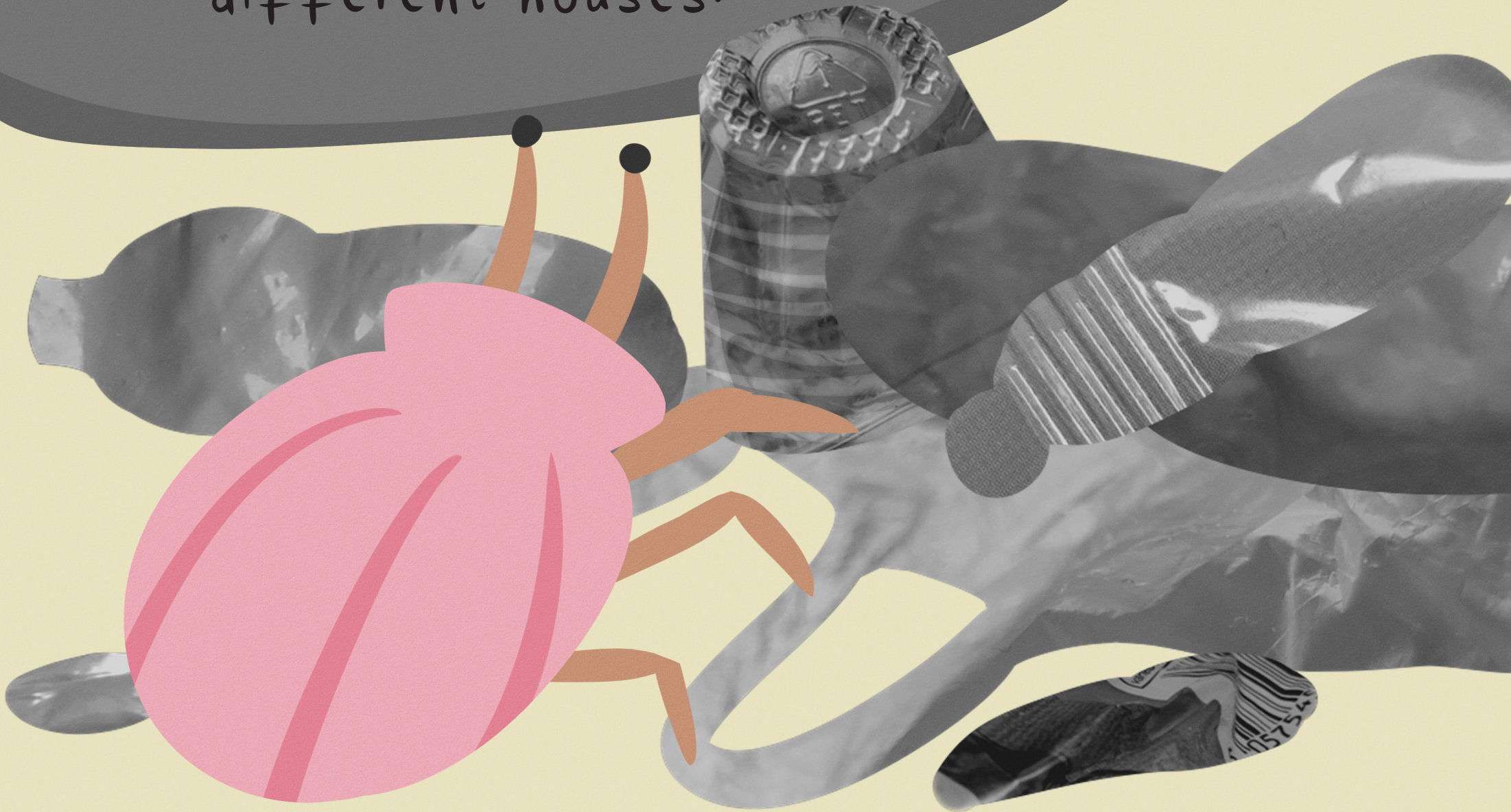
One of the crabs has
pushed in line. This has
left one without
a new home.



This little hermit sets
off on a journey to
find a new shell.



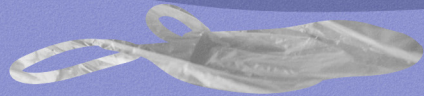
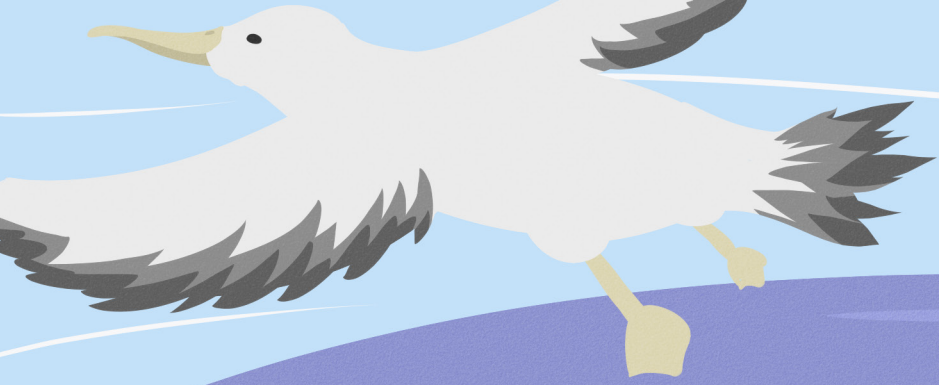
He comes across a pile of
different houses.



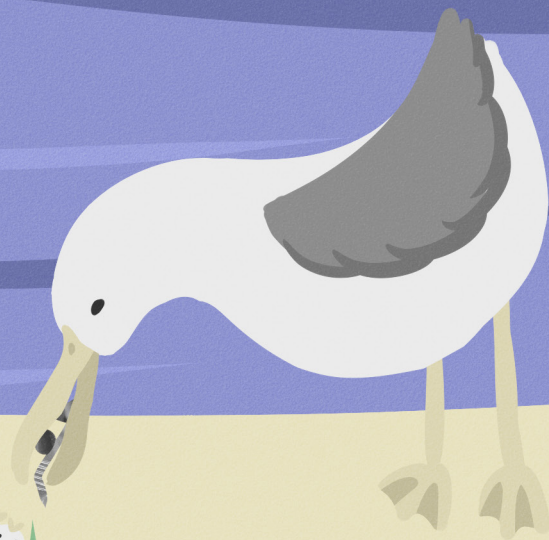
He manages to find a new house, but
hold on – that's not a shell!

Once he grows up,
hopefully he will find a
nice new shell to live in.





The Wandering Albatross is one of the
largest seabirds!



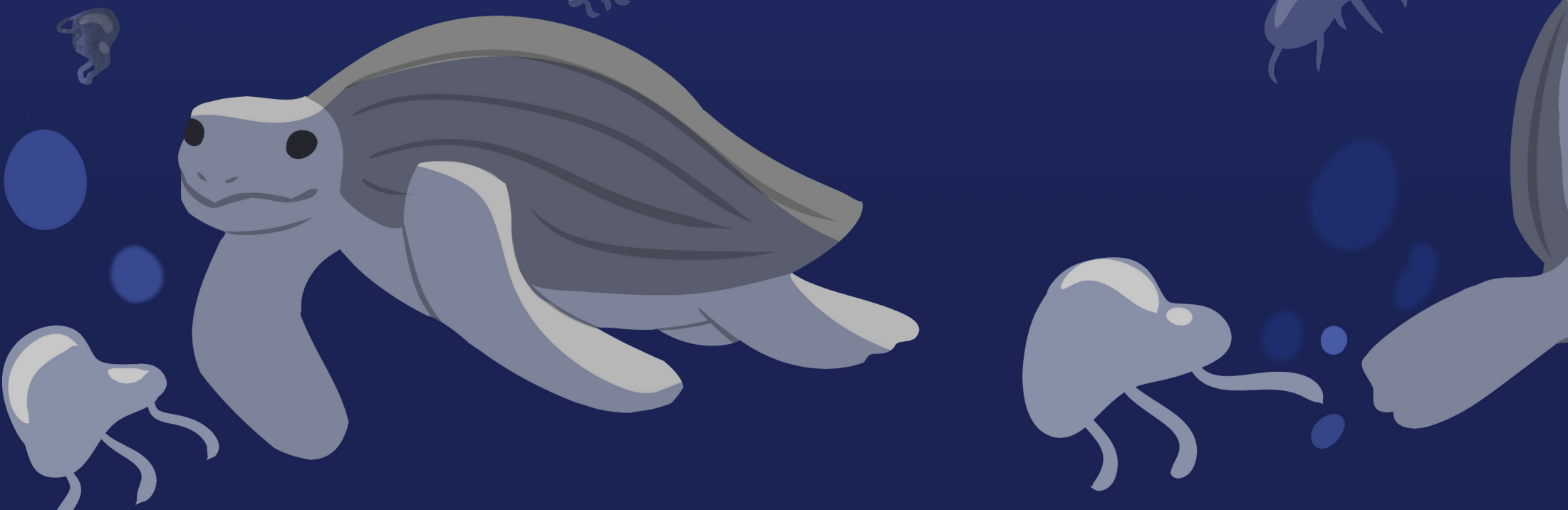
They like to eat everything
that they find.

When they are full, they
float on the water.



The leatherback turtle has
such a strong jaw,
it can bite jellyfish!

Sometimes, they get confused between
jellyfish and plastic bags.





Plastic can be found anywhere.

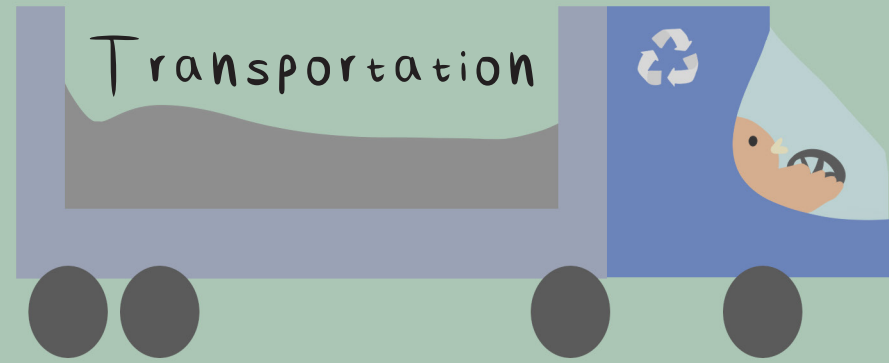
From the shallow coral
reefs...



The background is a deep blue gradient representing the ocean. It is populated with various stylized fish in shades of blue and grey. Some fish are large and detailed, while others are small and simple. Scattered throughout the scene are pieces of plastic waste, including a bottle cap, a plastic bag, and a piece of crumpled plastic. The text is written in a white, handwritten-style font.

...To the deepest
part of the ocean.

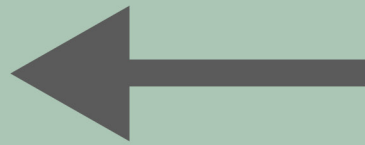
Nowhere is safe
from plastic.



This is how our rubbish gets recycled.

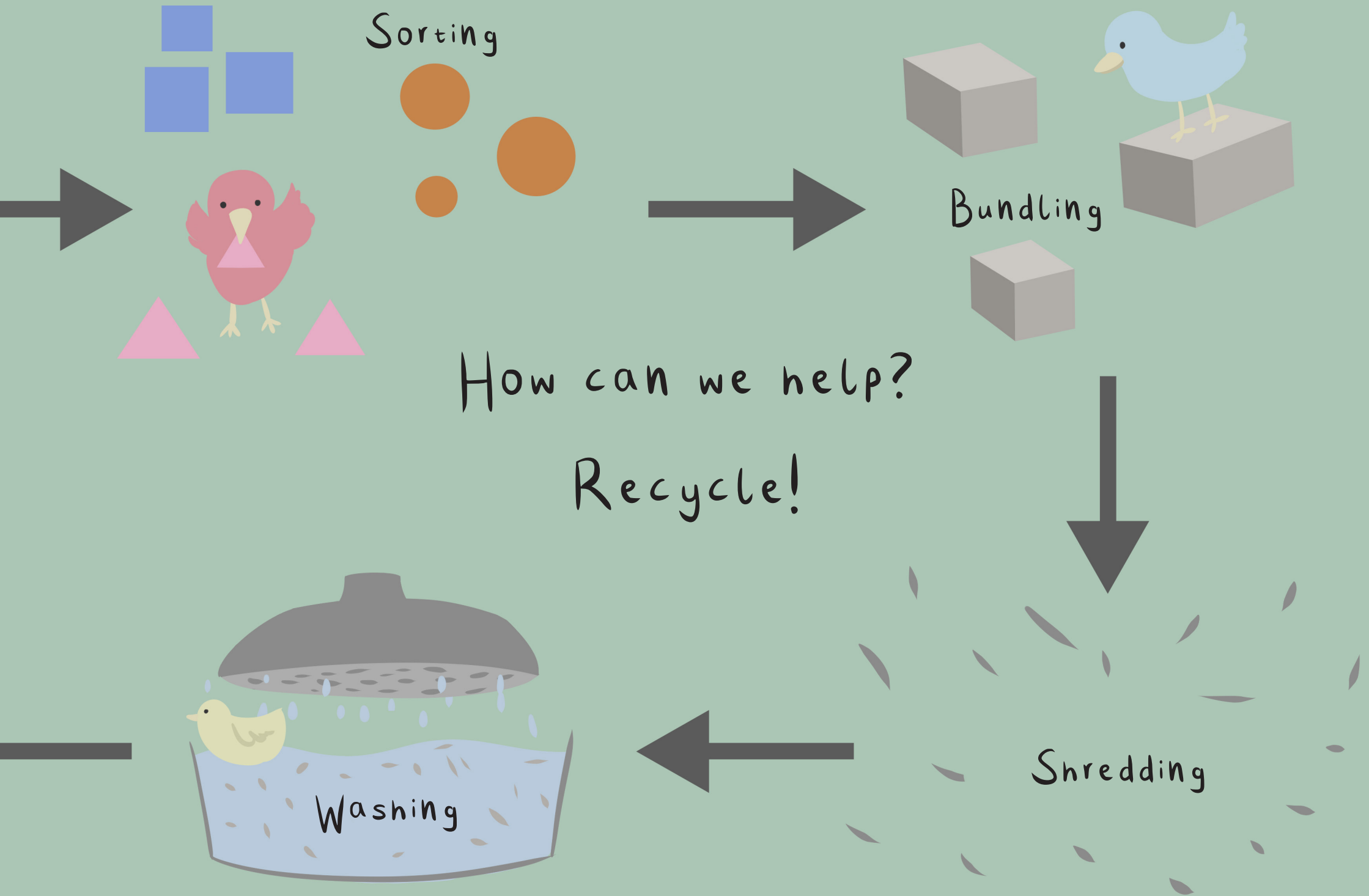


New recycled

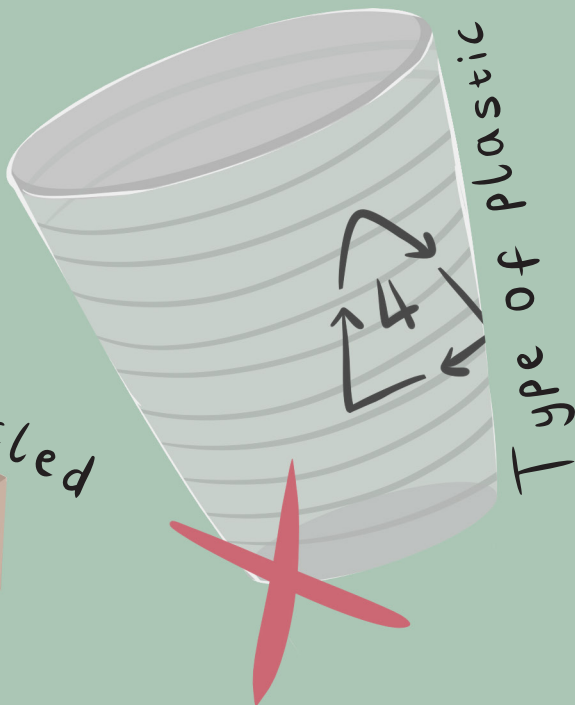
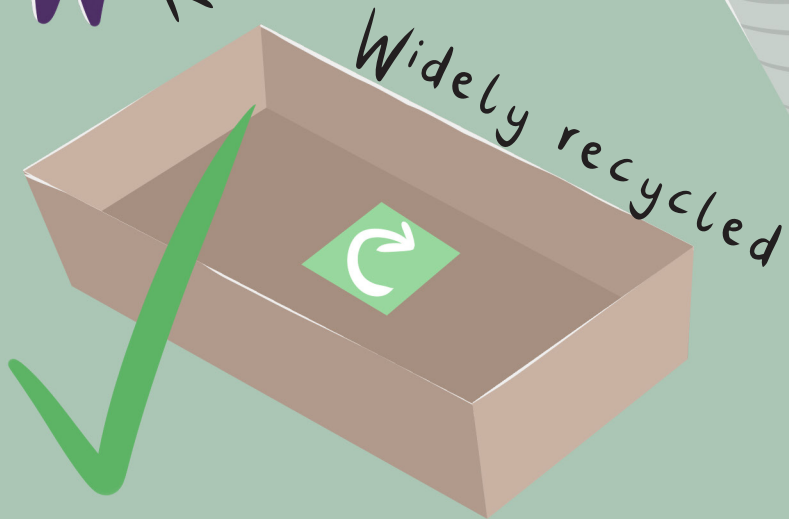


products

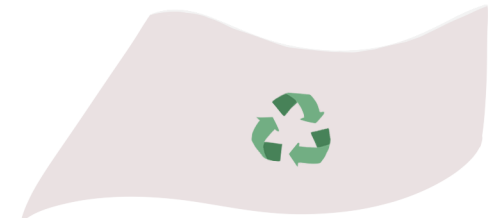
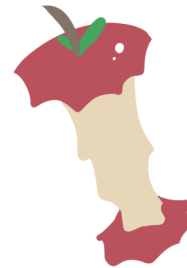
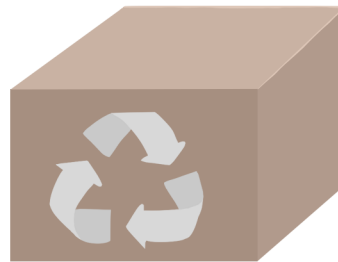




There are many different signs on packaging.



Where would these go?



General waste



Mixed recycling



Plastics



Mixed paper

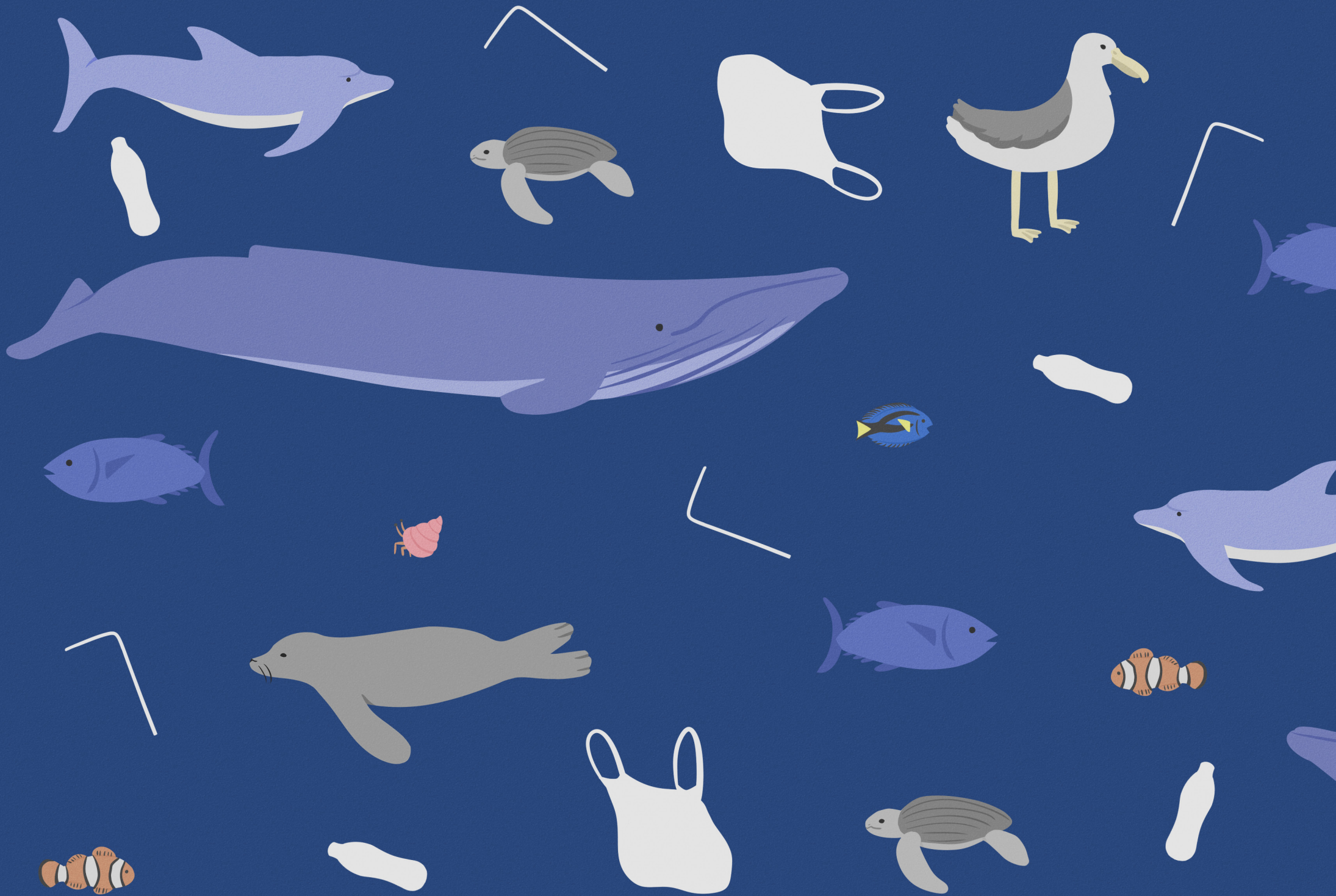


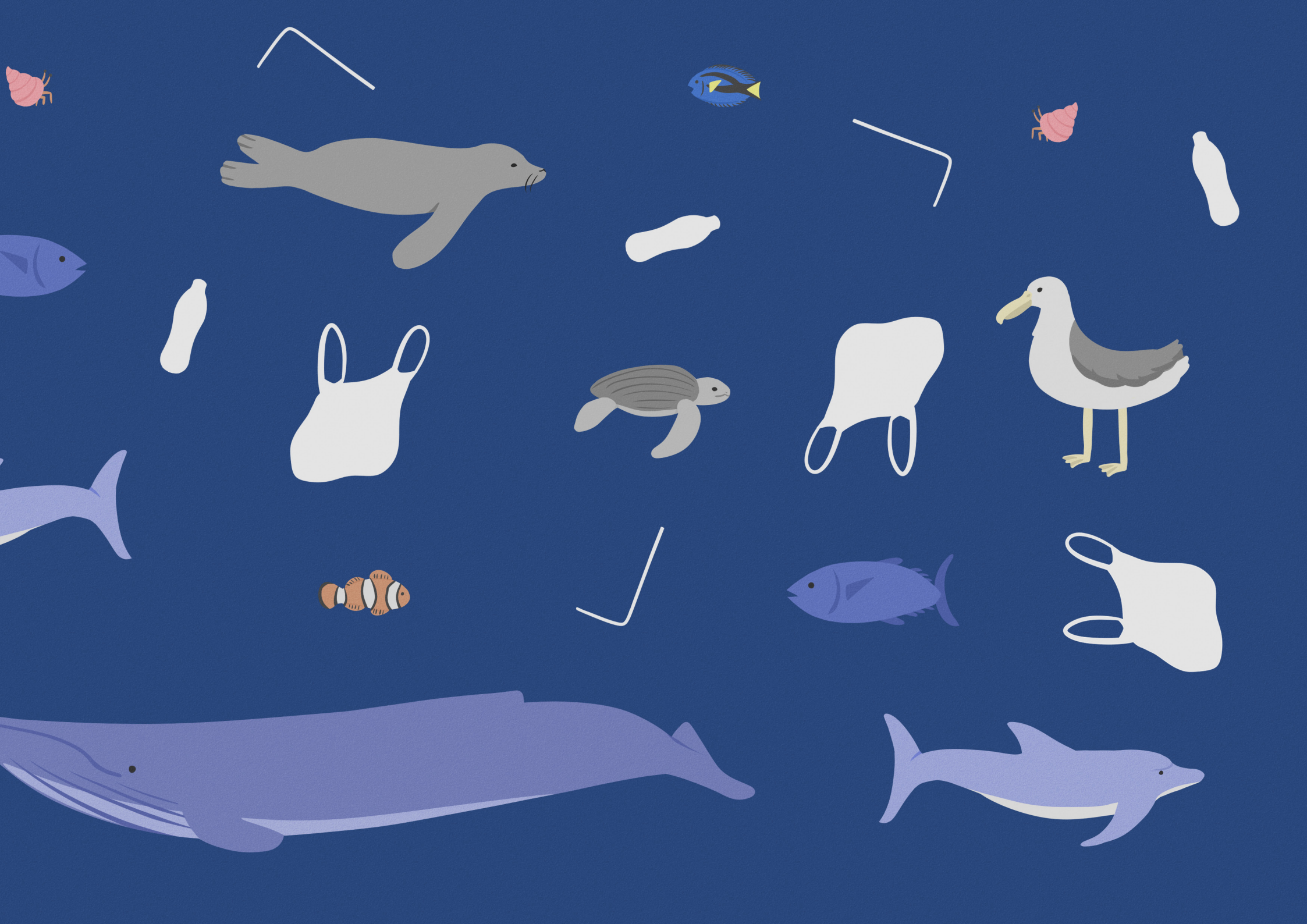
An illustration of an underwater scene. A large, grey whale is swimming in the upper left. A sea turtle is swimming in the upper right. A grey seal is swimming in the lower left, near some green seaweed. The background is a dark blue ocean with some bubbles and small fish. The text is written in a white, handwritten font in the center of the image.


If everyone makes a small
contribution, together we
are big and powerful.



Thank you for keeping
the oceans clean!





An illustration of a large grey whale with a dark eye and a small black dot on its forehead, swimming in the deep blue ocean. Three light blue dolphins are swimming near the whale's tail. In the upper left, two white birds with grey wings and yellow beaks are on the surface. A small white circle is in the sky. The text "Have you ever wondered where your plastic goes?" is written in a dark brown, handwritten font on the left side of the image.

Have you ever wondered
where your plastic
goes?

©Wen-Yi Yap 2021