

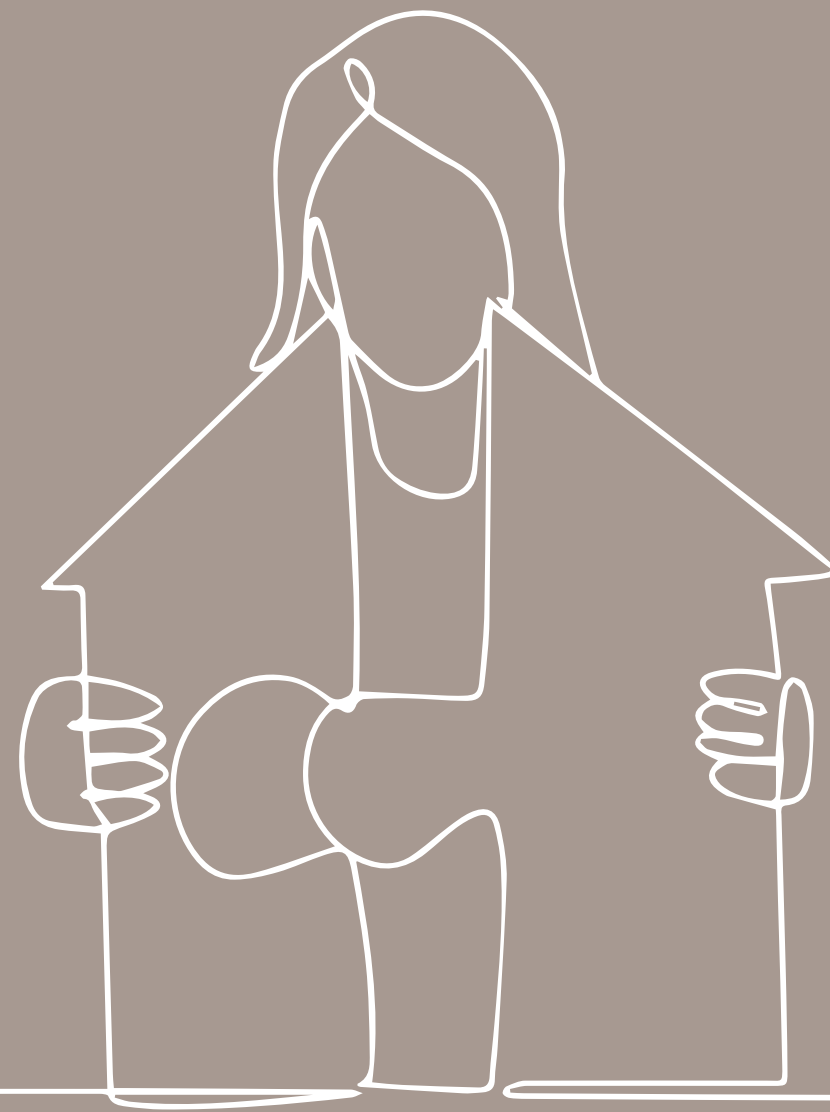
about

Coliving is a modern form of housing where residents share living space and a set of interests, values, and/or intentions. It's a new take on an old idea, imagined by a millennial generation that values things like openness and collaboration, social networking, and the sharing economy.

The bedrock of sustainable co-living is the sharing of assets. Living as a community encourages this idea, which means good things for the environment. Co-living also helps those under one roof ensure nothing goes to waste — assets of all kinds are swapped, borrowed and shared.

Co-living settings – while contributing to overall sustainable development through more efficient use of space and resources – can also contribute to societal and individual sustainability.

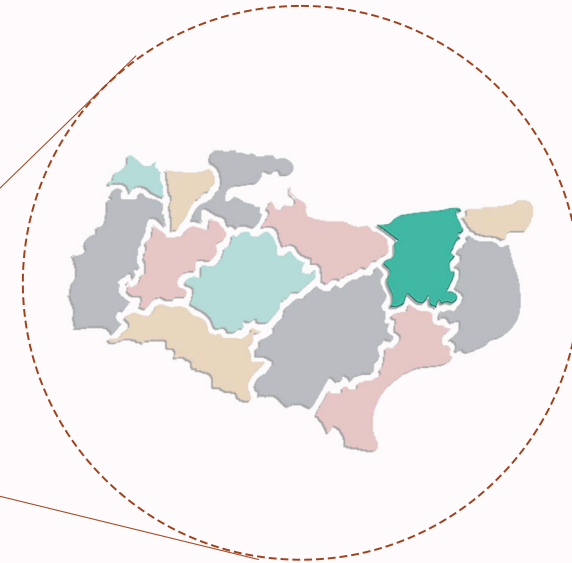
With that in mind, I wish to explore the concept further in the semi-urban setting of a cozy town, Canterbury .



site analysis

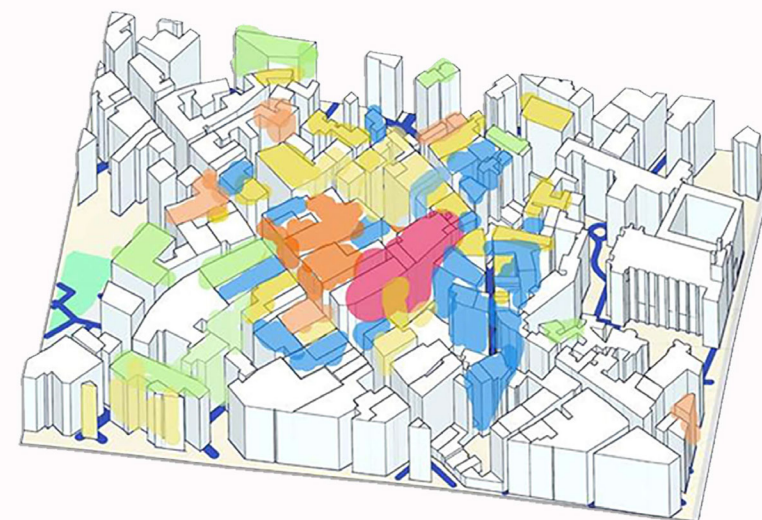
LOCATION

Canterbury, Kent, United Kingdom




SITE : Guild Hall Street, Canterbury

Movement of sun around the site



AREA ANALYSIS

-  SITE
-  FOOD & GROCERY
-  ART & ENTERTAINMENT
-  RETAIL
-  ACCOMODATION

CO-LIVING CO-WORKING

AREA SEGREGATION

TOTAL AREA = 918.20 SQM

Board Room Zone is attached to the Lounge for the accessibility, specifically for building users and is a semi private space.

The Circulation area is a made through the central axis which connects all the zones and Cores.

Breakfast Zone is connected with the service area and public zone.

The admin zone is being provided with a back entry carrying service activities to minimize the interaction with public spaces.

The waiting area is a public zone separate from the semi-public space while being linked to the reception area.

Washrooms are provided along with public and semi public spaces in order to restrict the movement on both the ends by specific users of the building i.e public and private accessibility of spaces.

Recreational Area consists of Seating, Table top games and is accessible by the public as well.

- Circulation
- Green Area
- Reception
- Recreational Area
- Waiting Area
- Breakfast Zone
- Lounge
- Administration
- Board Game Area
- Cinema Room
- Washroom
- Pump Room



GROUND FLOOR ZONE SEGREGATION

CO-LIVING CO-WORKING



zoning

Total Area- 918.20 SQM

Library located near co-working space. this library offers a quiet space away from visual distractions where you can focus, think, do your research, and get your work done.

Coworking spaces have been specifically designed to encourage collaboration and interaction with other young professionals, and students

The circulation area is made through a central axis that connects both the cores and the central zone

Common area act as a recreational area in First floor. Common area includes Common seating, Pantry and Green space.

Changing area and lockers are provided in gym area also gym designed as a multi-functional spaces that allow for a variety of activities in one spot.

- GREEN AREA
- CO-WORKING SPACE
- LAUNDRY
- LIBRARY
- COMMON AREA\ SEATING AREA
- CORE\ CIRCULATION
- GYM
- TOILET/CHANGING ROOM
- YOGA STUDIO
- PANTRY

FIRST FLOOR ZONING PLAN

CO-LIVING CO-WORKING



AREA SEGREGATION

TOTAL AREA = 918.20 SQM

CIRCULATION AREA (30%) = 275.46 SQM

COMMON CENTRAL AREA (10%) = 118.2 SQM

STUDIO AREA (45%) = 262.27 SQM
1/2 BHK (45%) = 262.27 SQM



SECOND FLOOR ZONE SEGREGATION

CO-LIVING CO-WORKING



AREA SEGREGATION

TOTAL AREA = 918.20 SQM

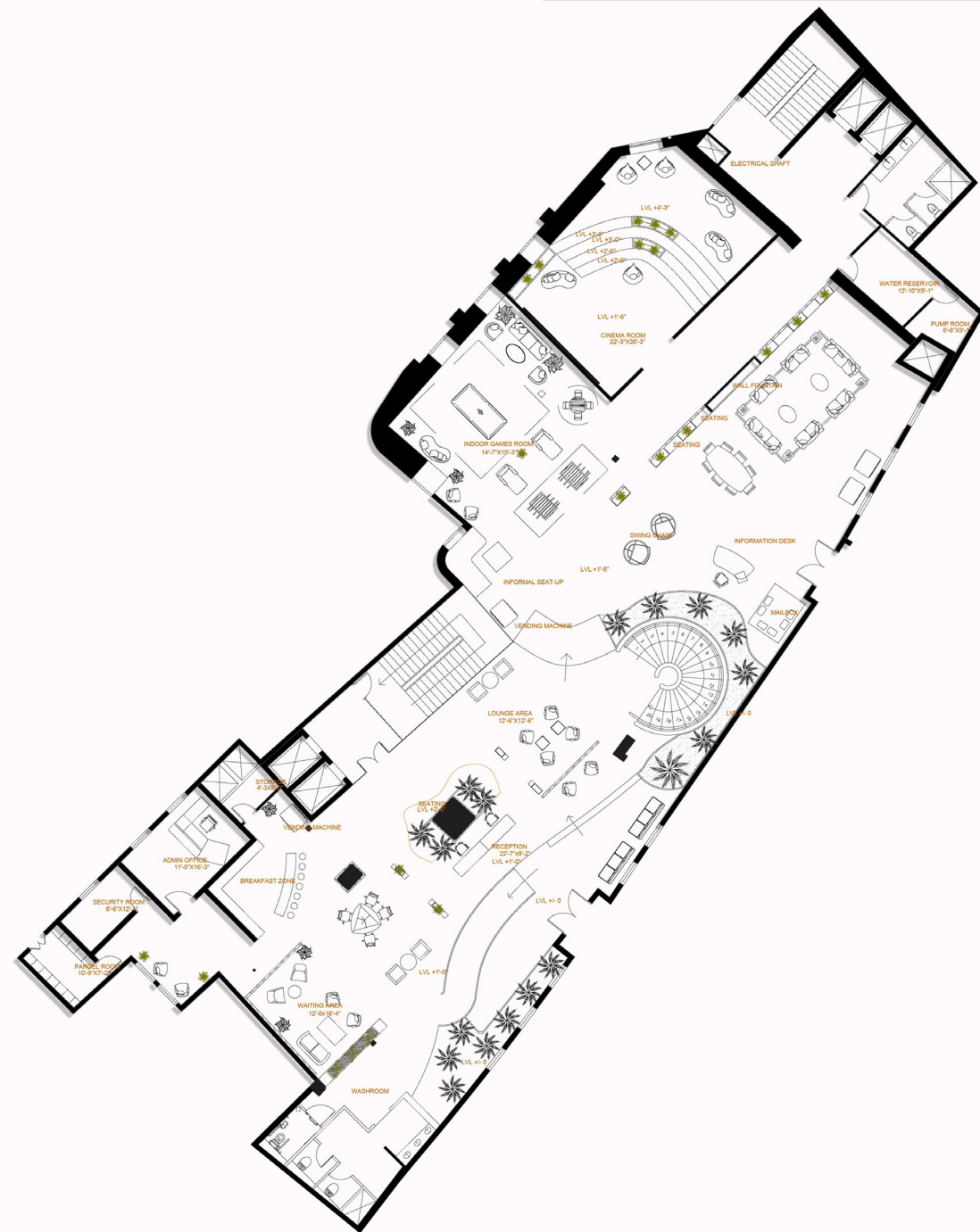
SPORTS AREA = 348 SQM

LANDSCAPE AREA = 400 SQM



- Toilet and changing room
- Building Core
- Landscape /Recreational area include seating space decking and pergola
- Sports area include seating space
- Restaurants

TERRACE PLAN ZONING



Ground floor Layout

CO-LIVING CO-WORKING



layout



First Floor Layout

CO-LIVING CO-WORKING



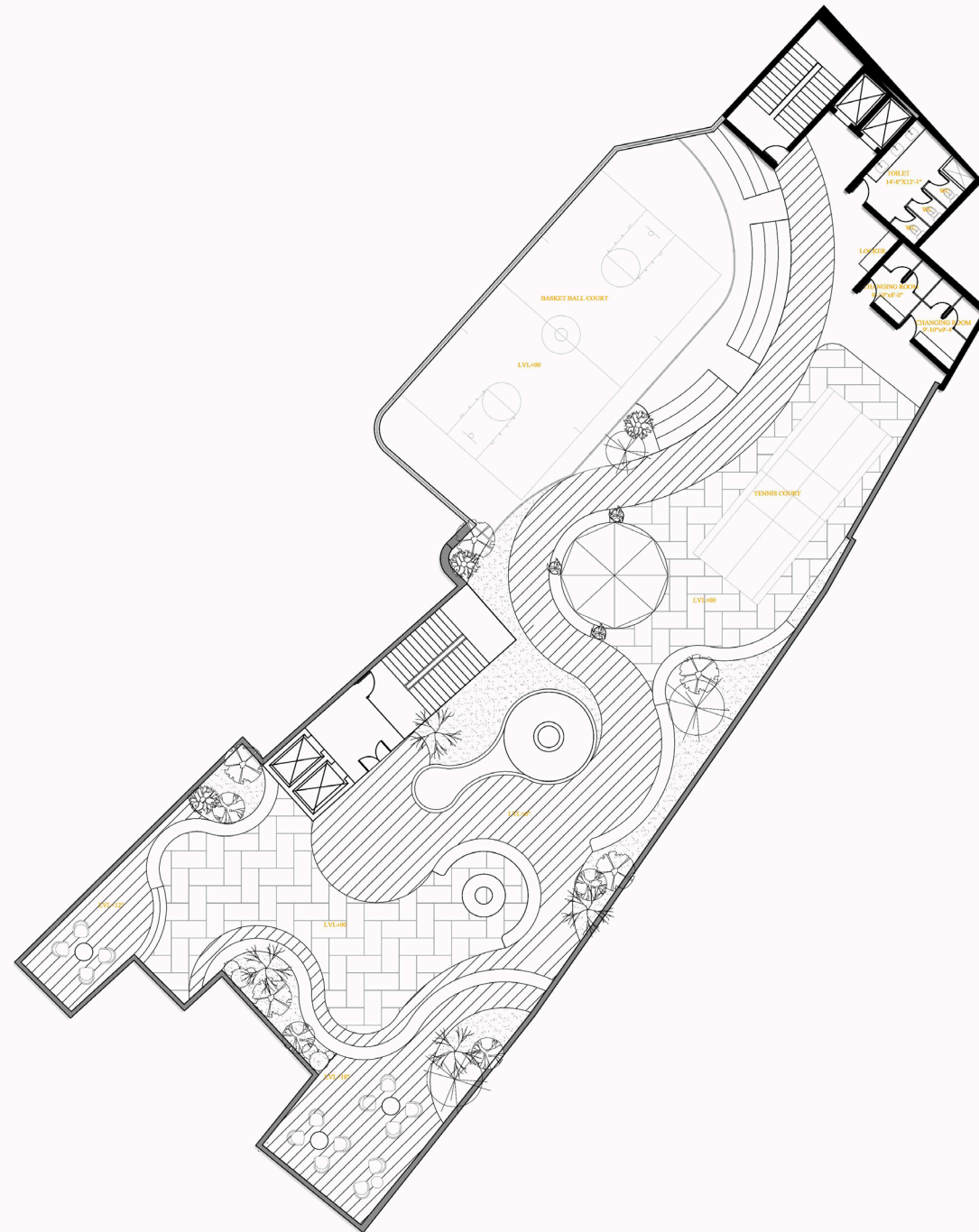


Second Floor Layout

CO-LIVING CO-WORKING



layout

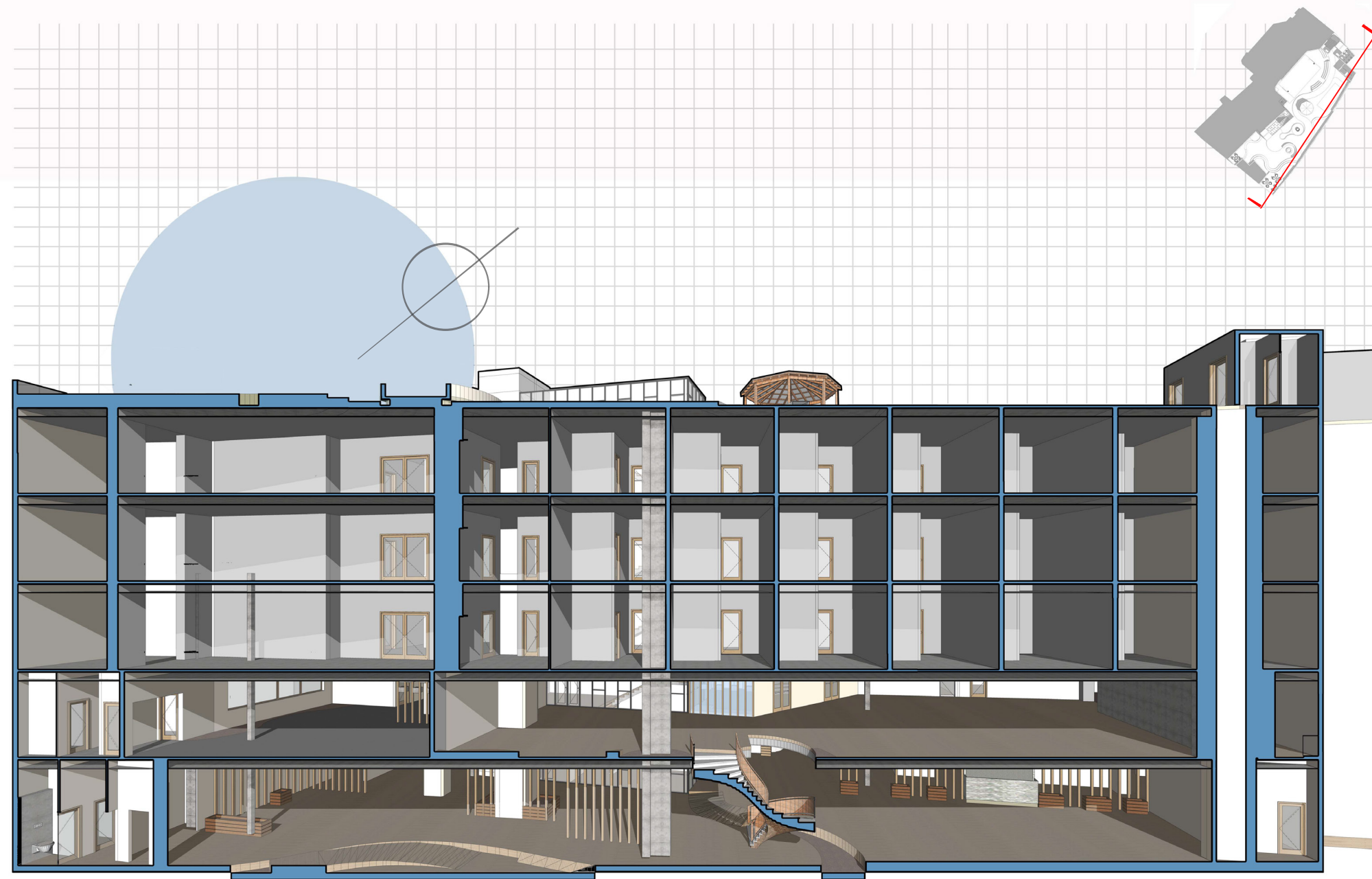


Terrace Layout

CO-LIVING CO-WORKING



sections

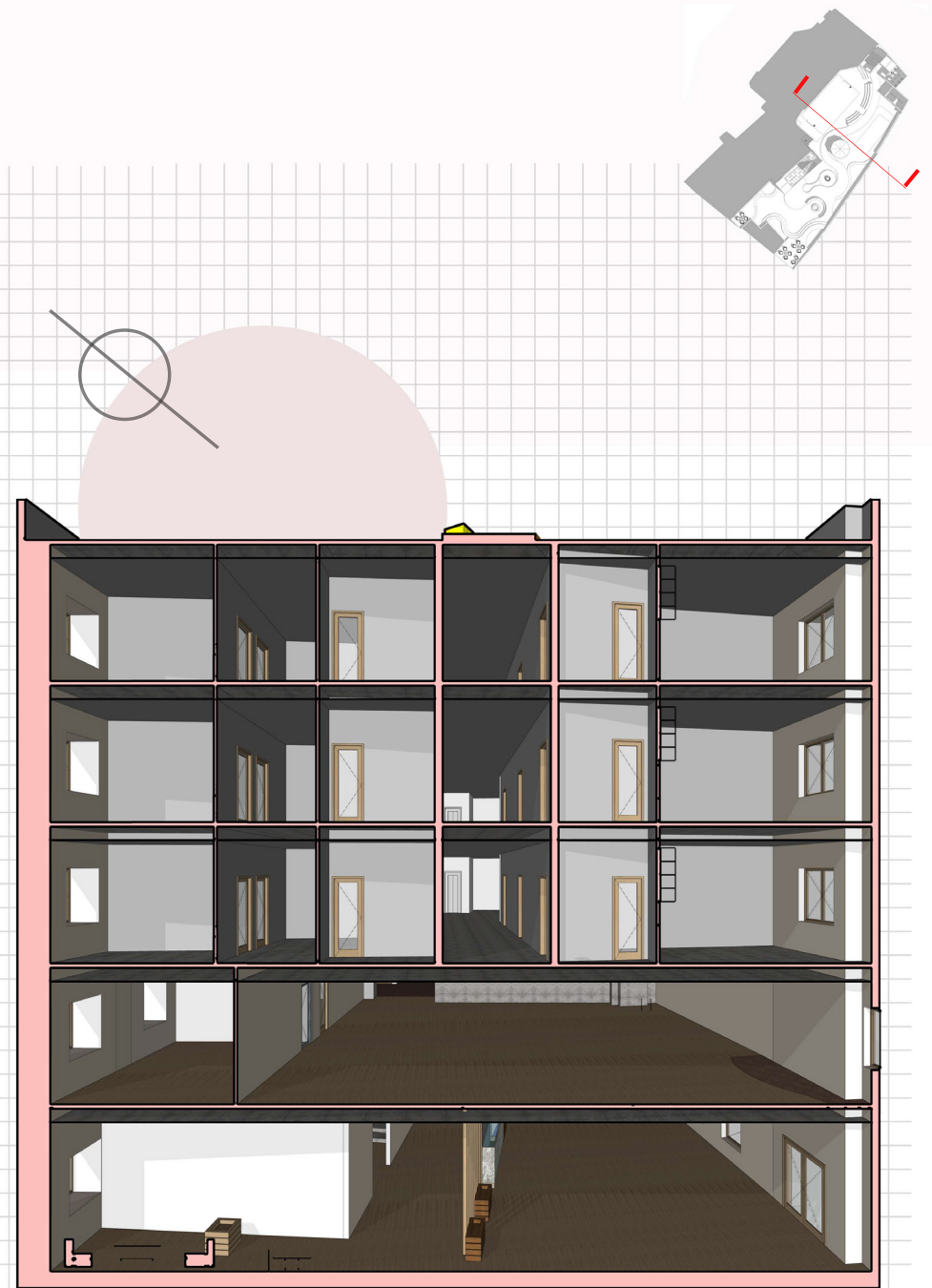
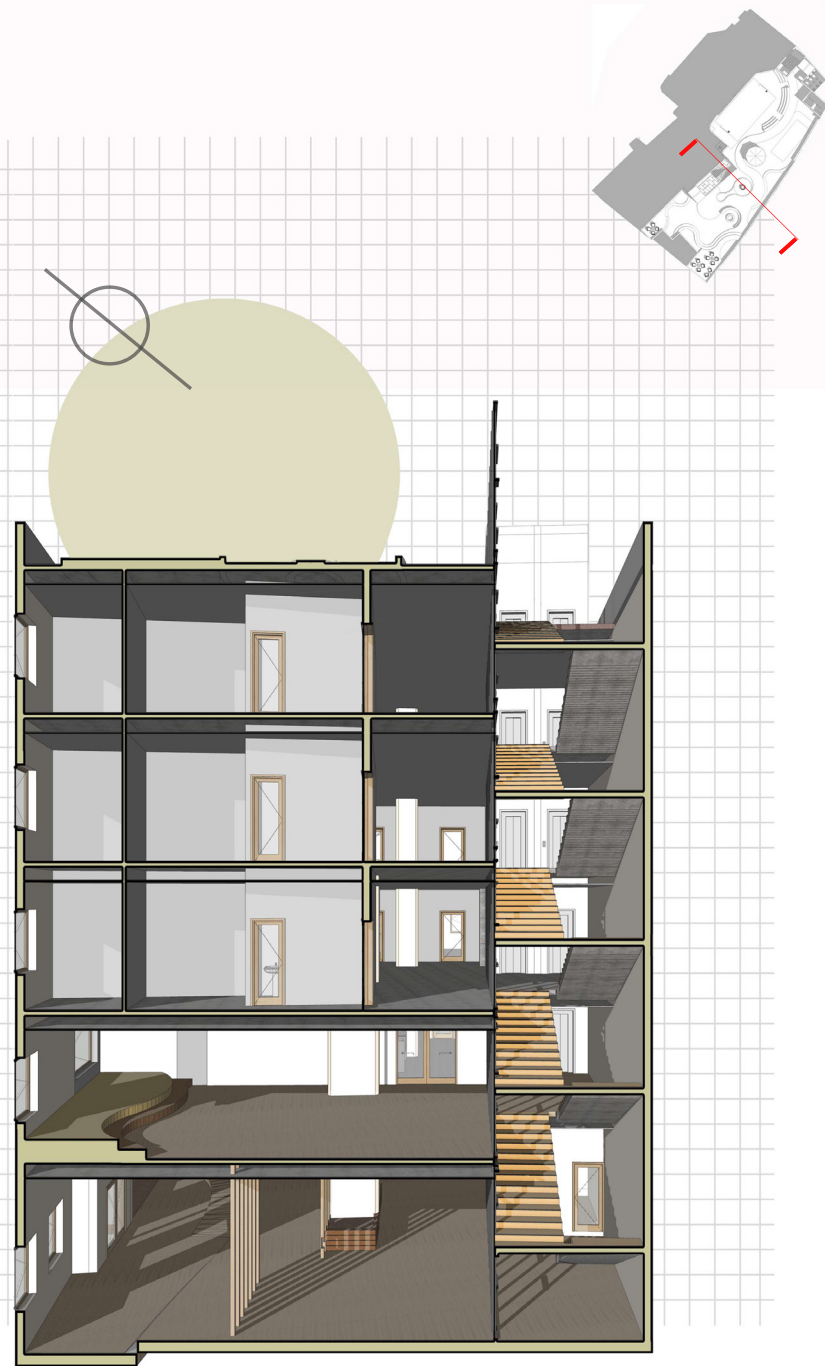


without furniture

CO-LIVING CO-WORKING

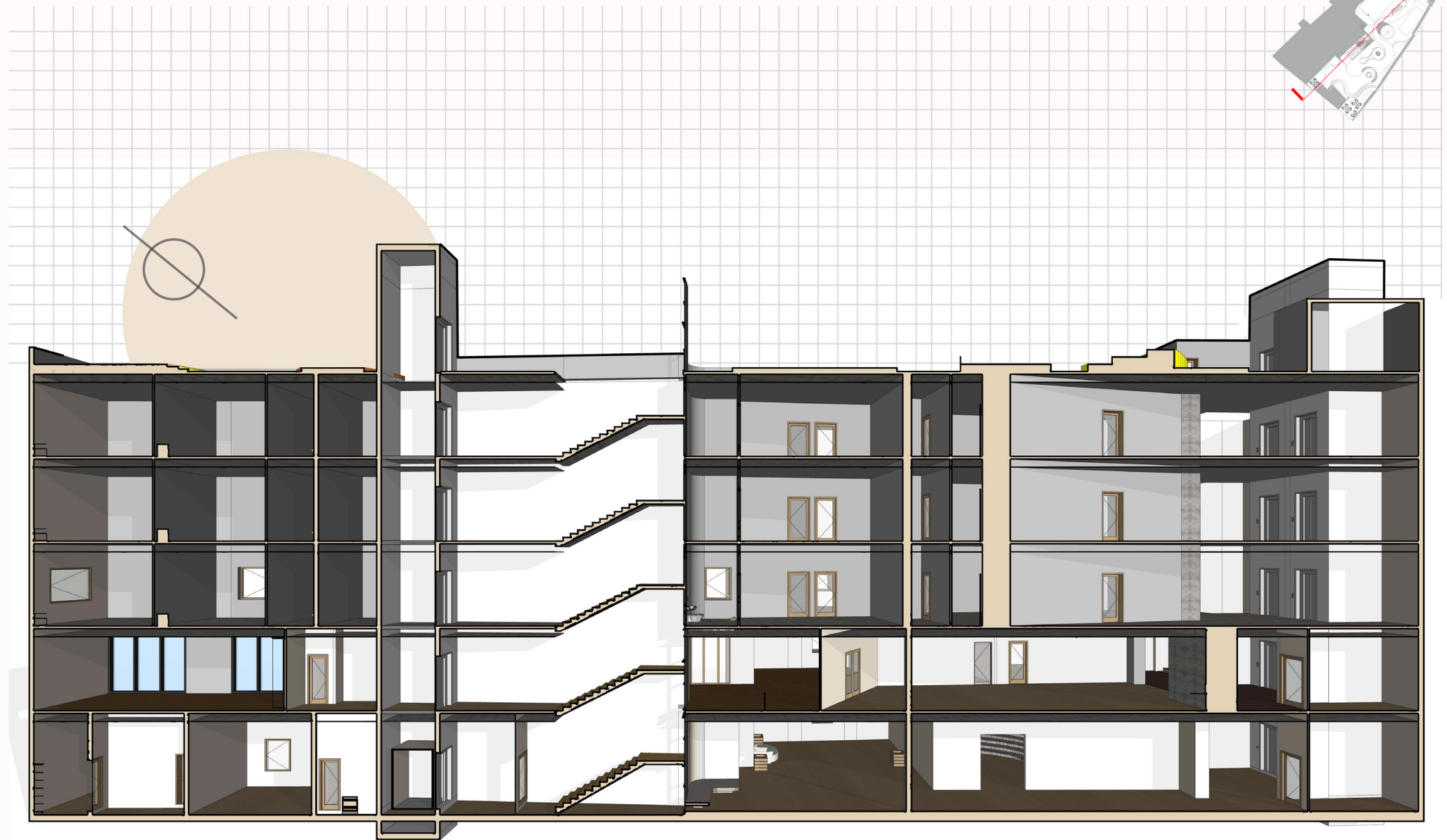
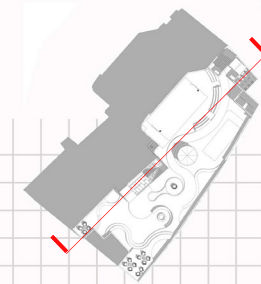
sections

without furniture



CO-LIVING CO-WORKING

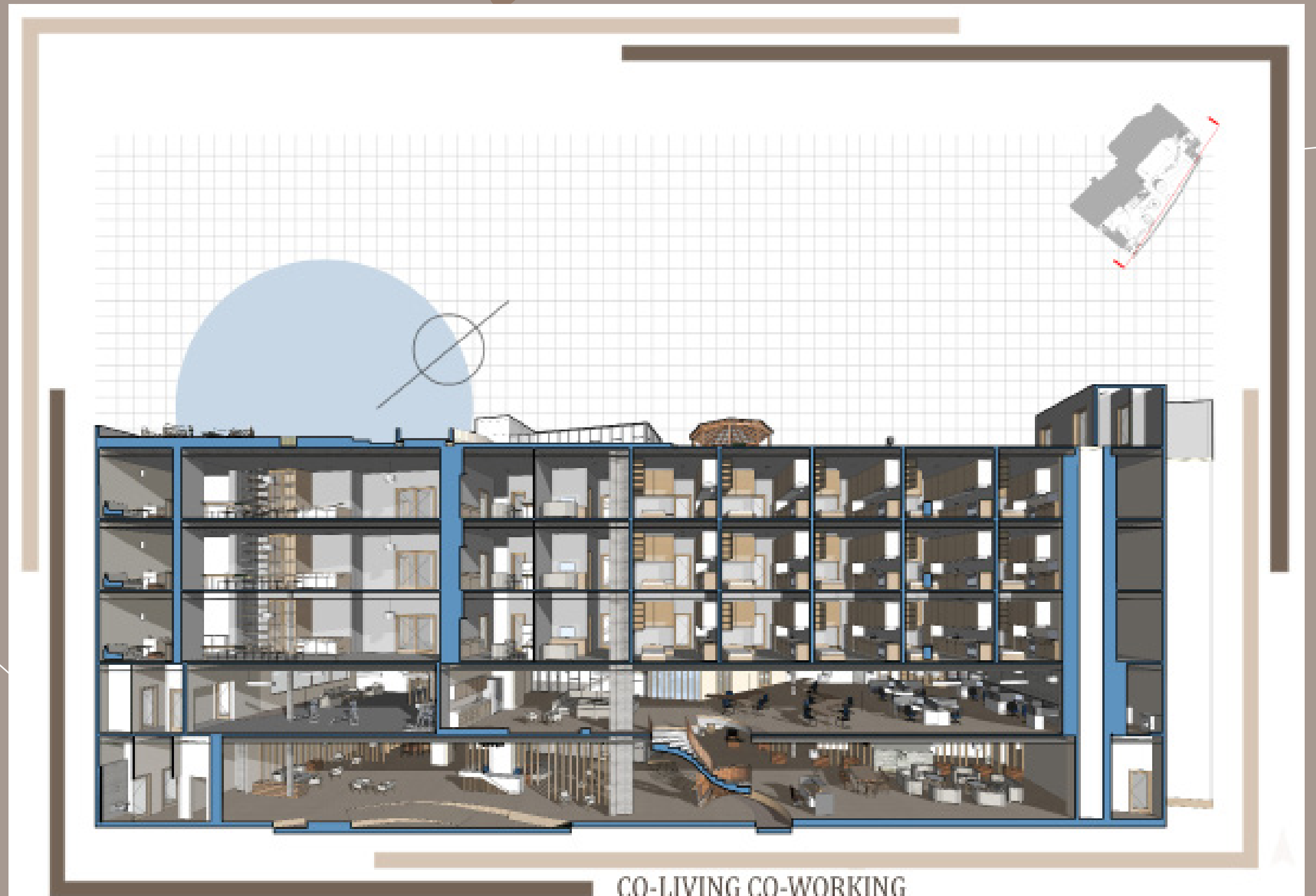
sections



without furniture

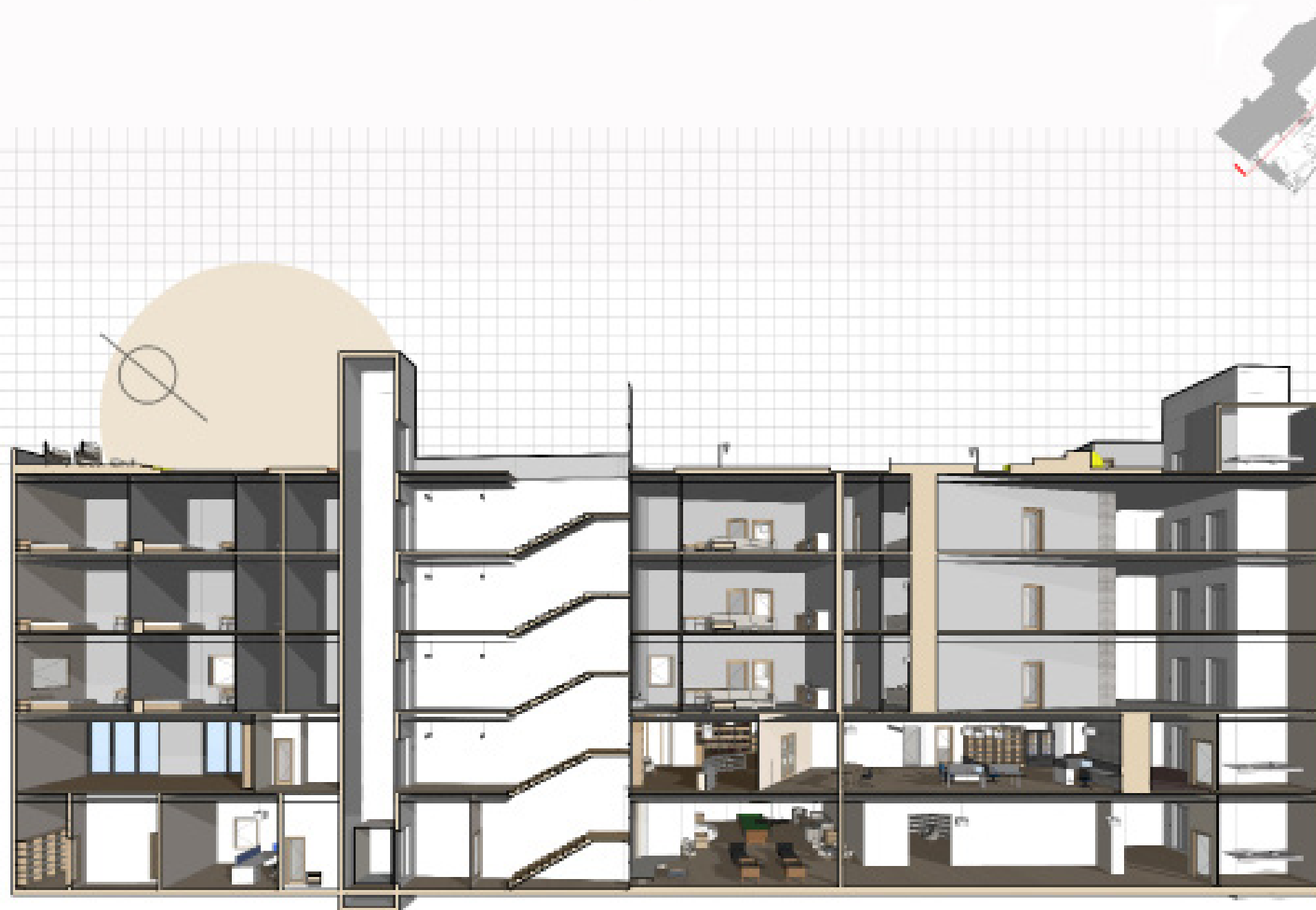
sections

with furniture



sections

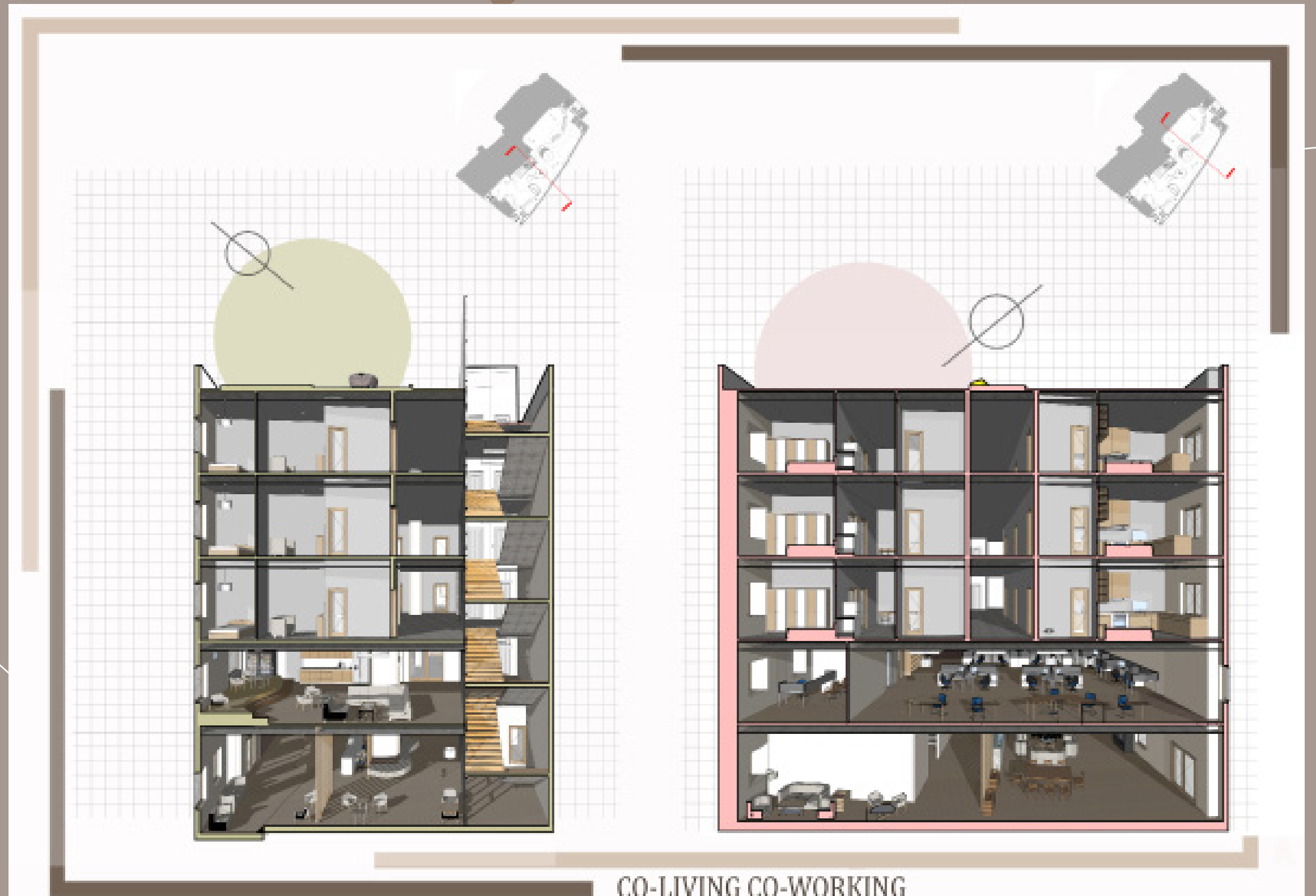
with furniture



CO-LIVING CO-WORKING

sections

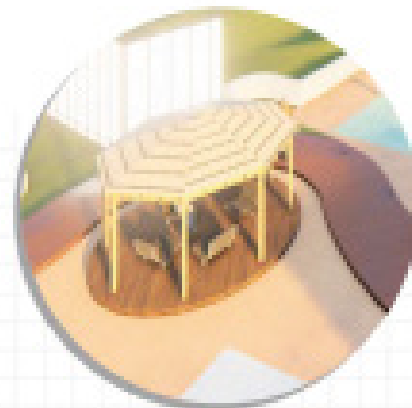
with furniture



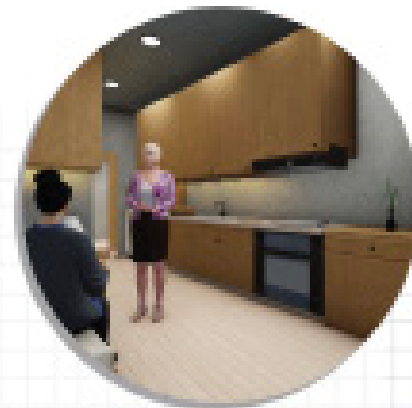
detailed
sections



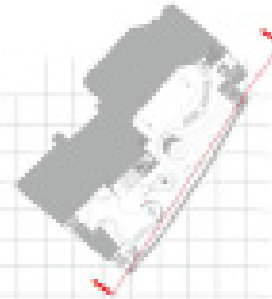
Cycling activity on First floor



Pergola on Terrace

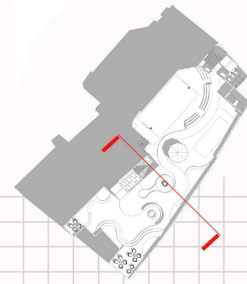


Apartment on Residential Floor

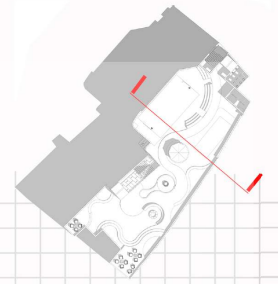
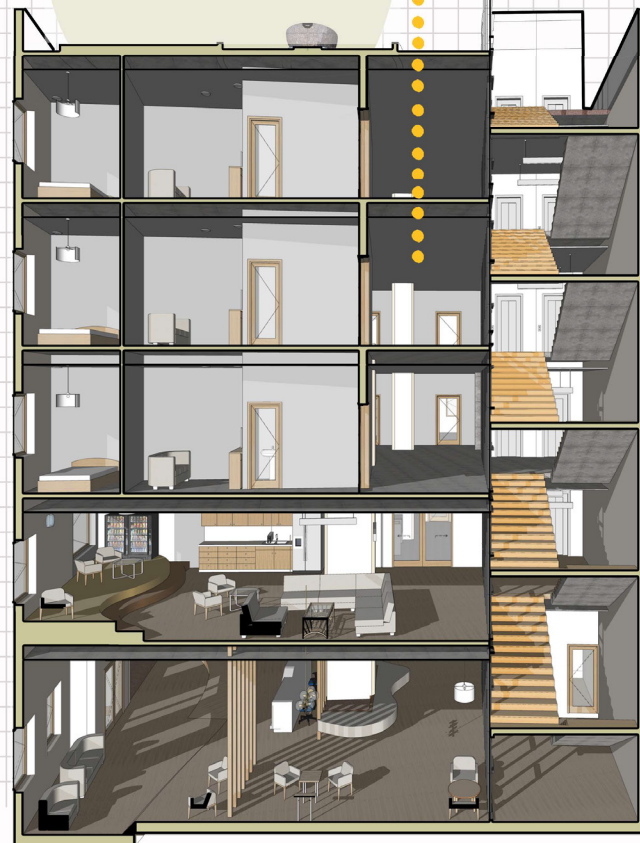


CO-LIVING CO-WORKING

detailed sections



Corridor Area



Common Area on Residential floors



CO-LIVING CO-WORKING

detailed sections



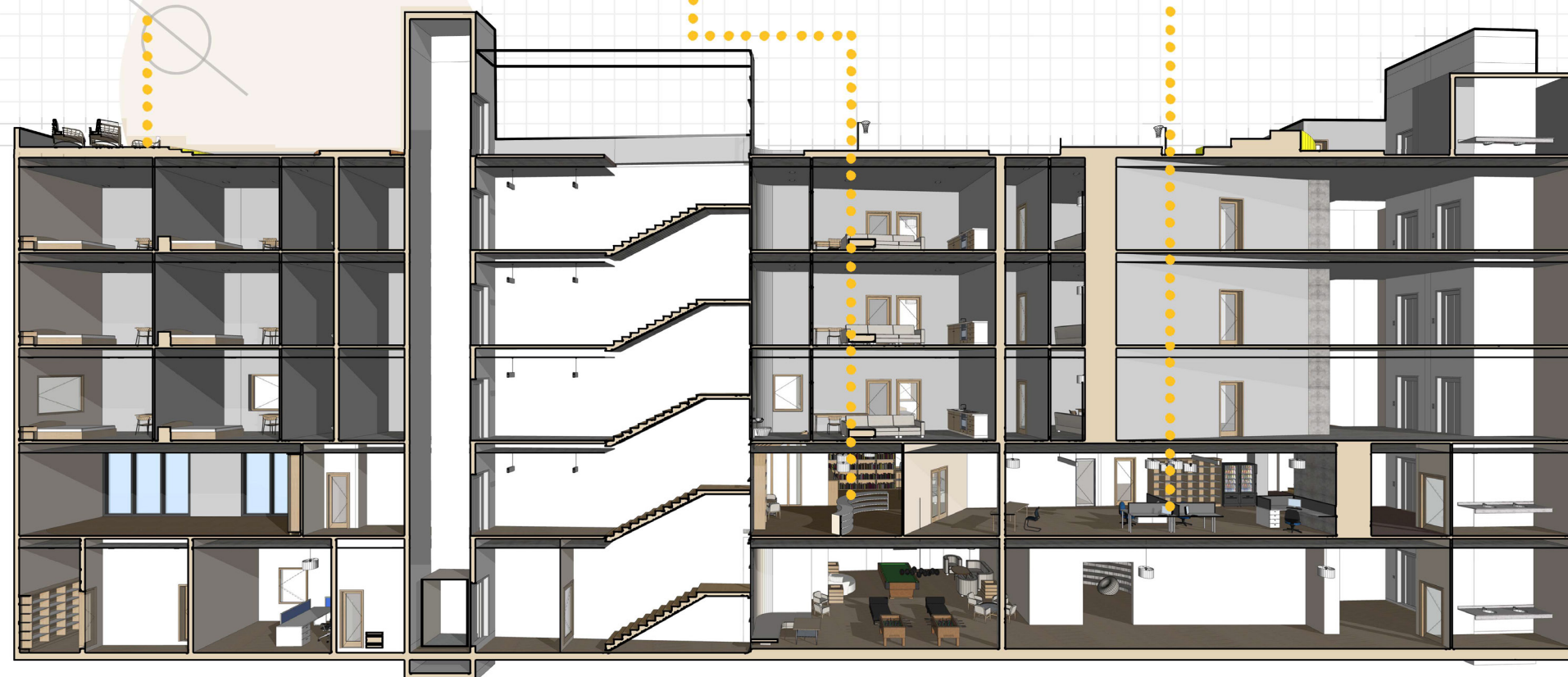
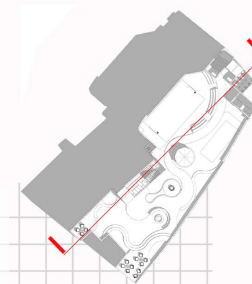
Landscape with seating on Terrace



Library Seating on First Floor



Co-Working Space on First floor



CO-LIVING CO-WORKING

material board

WARM MINIMALISM

This nostalgic and moody shade of Cavern Clay is great for an office space. Pair it with modern wooden furniture and also mix it with minimal items that will give a very cool vibe to this co-working space. Then, all it's let to do its start being creative and start a great working day.



Pendant light

Wooden furniture in Reception and Lounge,

Wooden floor cladding

wall fountain

Indoor plants

Bean Bag in cinema room

Sofa in waiting Lounge



material board

WARM MINIMALISM

This nostalgic and moody shade of Cavern Clay is great for an office space. Pair it with modern wooden furniture and also mix it with minimal items that will give a very cool vibe to this co-working space. Then, all it's left to do is start being creative and start a great working day.



material board

Warm minimalism

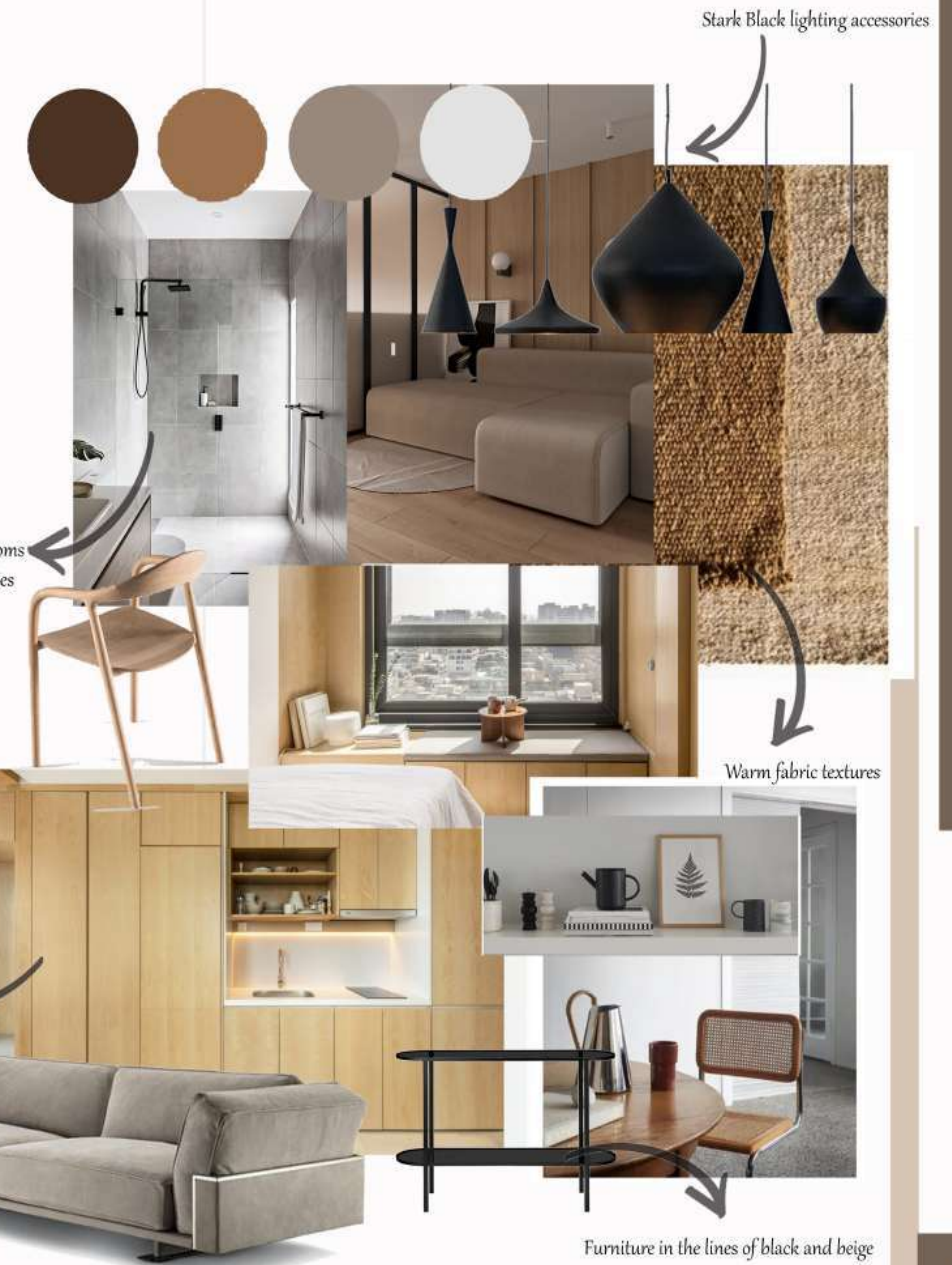
This design concept centres around the the same idea than minimalism but focusing on creating interiors embodied with warmth, homyness, character and that are essentially filled with life. It looks clean and cluster free and yet appear welcoming, cozy and liveable.



Material moodboard



SECOND FLOOR MATERIAL BOARD



Seamless cabinets with white quartz countertop to create a light and airy composition

Monochrome washrooms with black accessories

Stark Black lighting accessories

Warm fabric textures

Furniture in the lines of black and beige



material board

TERRACE LANDSCAPEING

Terrace landscaping incorporated some important landscape elements like pergola, water body, planters also, this design have incorporated the landscaping materials to produce public spaces and roof terraces that take the inner city dweller to a whole new realm of greenery and nature.



TERRACE MATERIAL BOARD

CO-LIVING CO-WORKING

electrical

| LEGENDS | BRANDS |
|--------------------------------------------------------------------------------------------------|---------------------|
|  Spot Light | Phillips |
|  Wall Lamp | Phillips |
|  Pendant Light | Artigiana Lampadari |
|  Switches (x2) | Switches Von KTI |
|  Switches (x4) | Switches Von KTI |

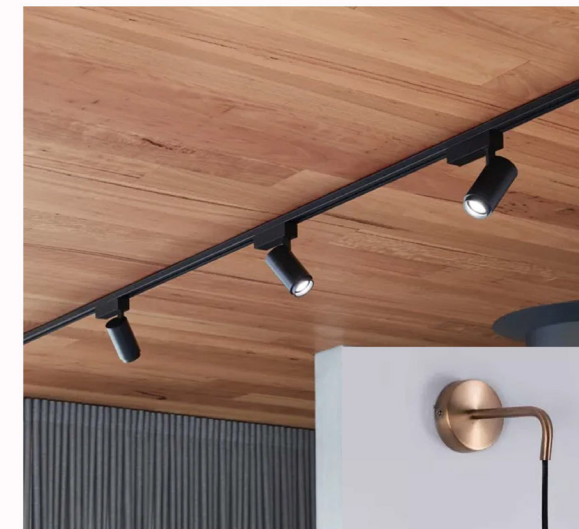


Ground Floor Electrical Plan










Spot lights

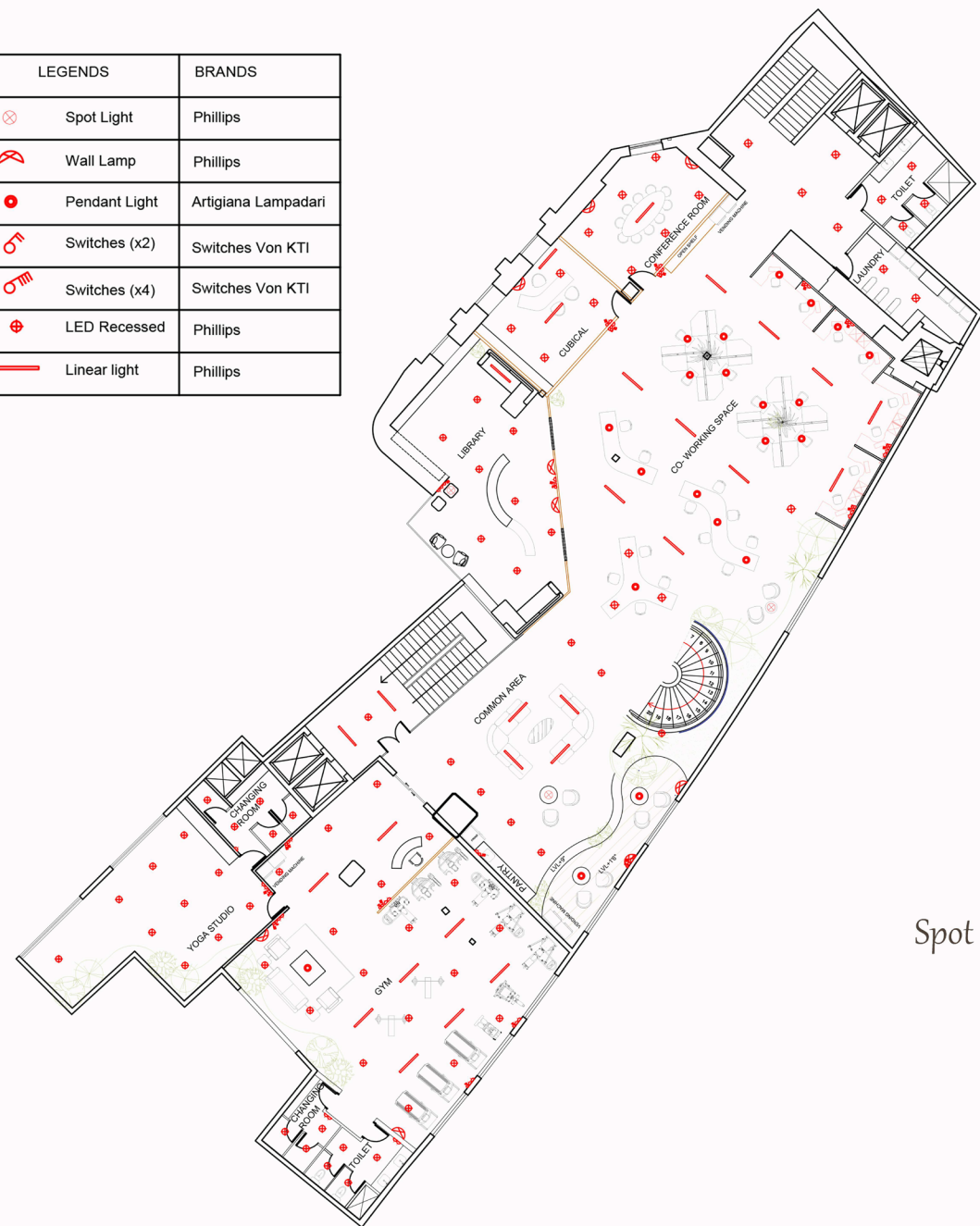
Pendant Lights



Wall Lamp

CO-LIVING CO-WORKING

| LEGENDS | BRANDS |
|-------------------------------------------------------------------------------------------------|---------------------|
|  Spot Light | Phillips |
|  Wall Lamp | Phillips |
|  Pendant Light | Artigiana Lampadari |
|  Switches (x2) | Switches Von KTI |
|  Switches (x4) | Switches Von KTI |
|  LED Recessed | Phillips |
|  Linear light | Phillips |



FIRST FLOOR ELECTRICAL PLAN

CO-LIVING CO-WORKING

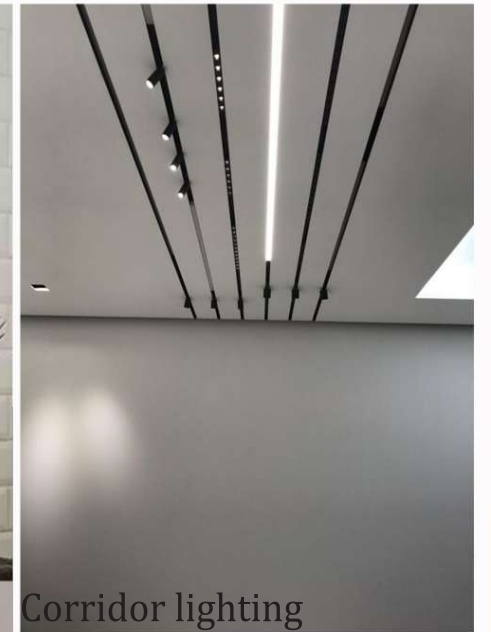


electrical

| LEGENDS | BRANDS |
|---------|---------------------|
| | Phillips |
| | Phillips |
| | Artigiana Lampadari |
| | Switches Von KTI |
| | Switches Von KTI |
| | Phillips |
| | Phillips |
| | Phillips |
| | |



Wahroom mirror lighting



Corridor lighting



Linear light

Studio and co living lighting



Feature lighting

Second floor Electrical Plan

CO-LIVING CO-WORKING



Staircase area on the ground floor for easy vertical circulation



Seating Area on the Ground Floor



Play Area with ambient Lighting and large space.



Lounge and Dining Space with wooden loaves and planters.



Ground Floor



COMMON SPACE

Ground Floor



PLAY AREA



renders



GROUND FLOOR VIEW

GROUND FLOOR SPACE VIEW

CO-LIVING CO-WORKING





GROUND FLOOR VIEW

GROUND FLOOR SPACE VIEW

CO-LIVING CO-WORKING



renders



CO-WORKING SPACE



BLOW-UP VIEW OF DISCUSSION ZONE IN CO-WORKING SPACE



BOOKSHELF, SEATING SPACE AND GLASS WALL WITH PITCHED GLASS ROOF IN LIBRARY



LIBRARY



CURTAIN WALL WINDOW IN GYM AREA

FIRST FLOOR VIEWS

CO-LIVING CO-WORKING



LIBRARY VIEW



renders



CO-WORKING SPACE VIEW

FIRST FLOOR VIEWS

CO-LIVING CO-WORKING

Kitchen space
in provided in the studio
with cove lighting



Light and bright
corridor in the studio



Sitting space with
ambient lighting in
the common space



Second Floor



Second Floor

STUDIO SPACE

COMMON ROOM

CO-LIVING CO-WORKING



renders



COMMON AREA

SECOND FLOOR VIEWS

CO-LIVING CO-WORKING



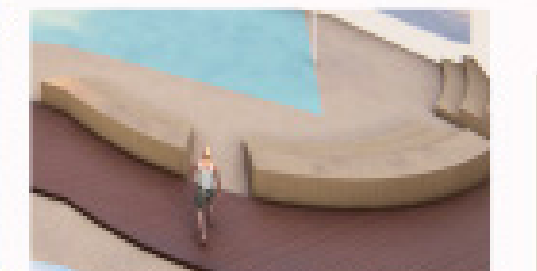
STUDIO APARTMENT



renders



GREEN AREA DESIGNED AROUND SEATING SPACES.



STEP SEATING DESIGNED AROUND MULTI PURPOSE COURT



WOODEN DECKING IS USED IN STEP SEATING AND COVE LIGHT PROVIDED UNDER SEATING AREA. FIRE PIT DESIGN AROUND THE SEATING AREA.

PERGOLA DESIGNED NEAR BADMINTON COURT



TERRACE VIEWS

CO-LIVING CO-WORKING

thank you!