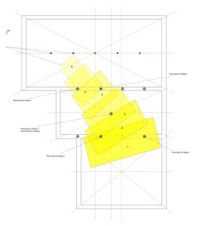
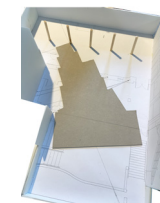
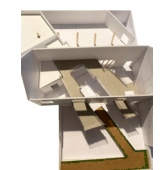


- 1. Mottled grey ceramic floor tile
- 2. Reclaimed oak cladding
- 3. Terracotta Clays Cotto porcelain floor tile
- 4. Cream gloss wall tile
- 5. Emerald Quartz granite worktop
- 6. Hammered copper

## Materials



## Installation Development



### The Parlour

Upstairs are information boards, a view of different aspects of the Pantry and the opportunity to go out on to the balconies and view the Knot Garden from above.






### The Still Room

The teaching kitchen where the cookery courses are run, observers can watch through two viewing windows.





### The Pantry

Upon entering the building there is the option to read the information boards, buy preserves, watch the cookery or take part in a course. Walking through the enclosing corridor leads to the cool dark Canning Room.



# In A Pickle!

## Cookery School

A cookery school, commissioned by the charity, The School of Artisan Food promoting a healthy, sustainable lifestyle and aimed specifically at teaching people different methods of preserving food, many that have been used for centuries. Whether experienced gardeners or new to growing, these courses inspire people to use their own produce and help them towards a self provisioning future.

### Concept


The concept was taken from the preservative history of the site, the Farnham Maltings. Its history has included uses that involved the preserving of different materials - hides for leather, barley for malt, but also the preservation of the building itself.

The connotations of the term preserve related to cookery led to feelings of reduction and concentration. When preserving produce the moisture is extracted that results in a concentrated product with an enhanced flavour. This philosophy was translated into the installation into the site.




### The Plan

Highlights the key areas within the scheme which was taken from the initial abstract circulation.







### The Approach

The approach to the entrance leads through the Knot Garden where herbs can be seen growing in geometric beds.

