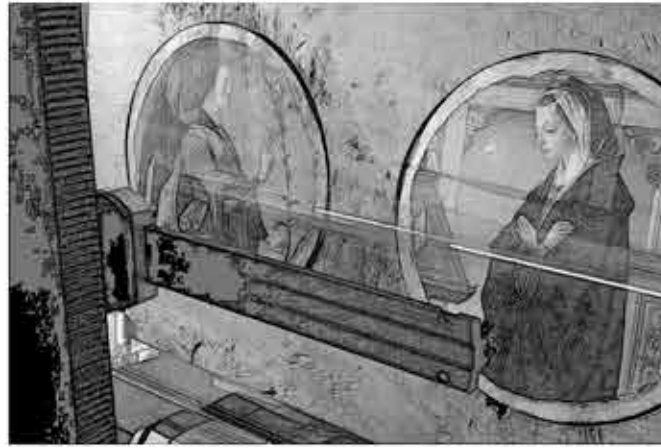


● Surrounding Art Museums + Gallery's

○ InnovArte Milano Site

Site Summary



Lucida Lab Milano was founded in 2014 to promote the application of digital, non-invasive and non-contact technologies for the conservation of cultural heritage within Milan. Lucida Lab specialises in high-resolution 3D scanning for museums, public collections, heritage foundations and cultural institutions.

The aim of taking on such a forward approach is to demonstrate just how effective high-resolution digital technologies are at conservation.

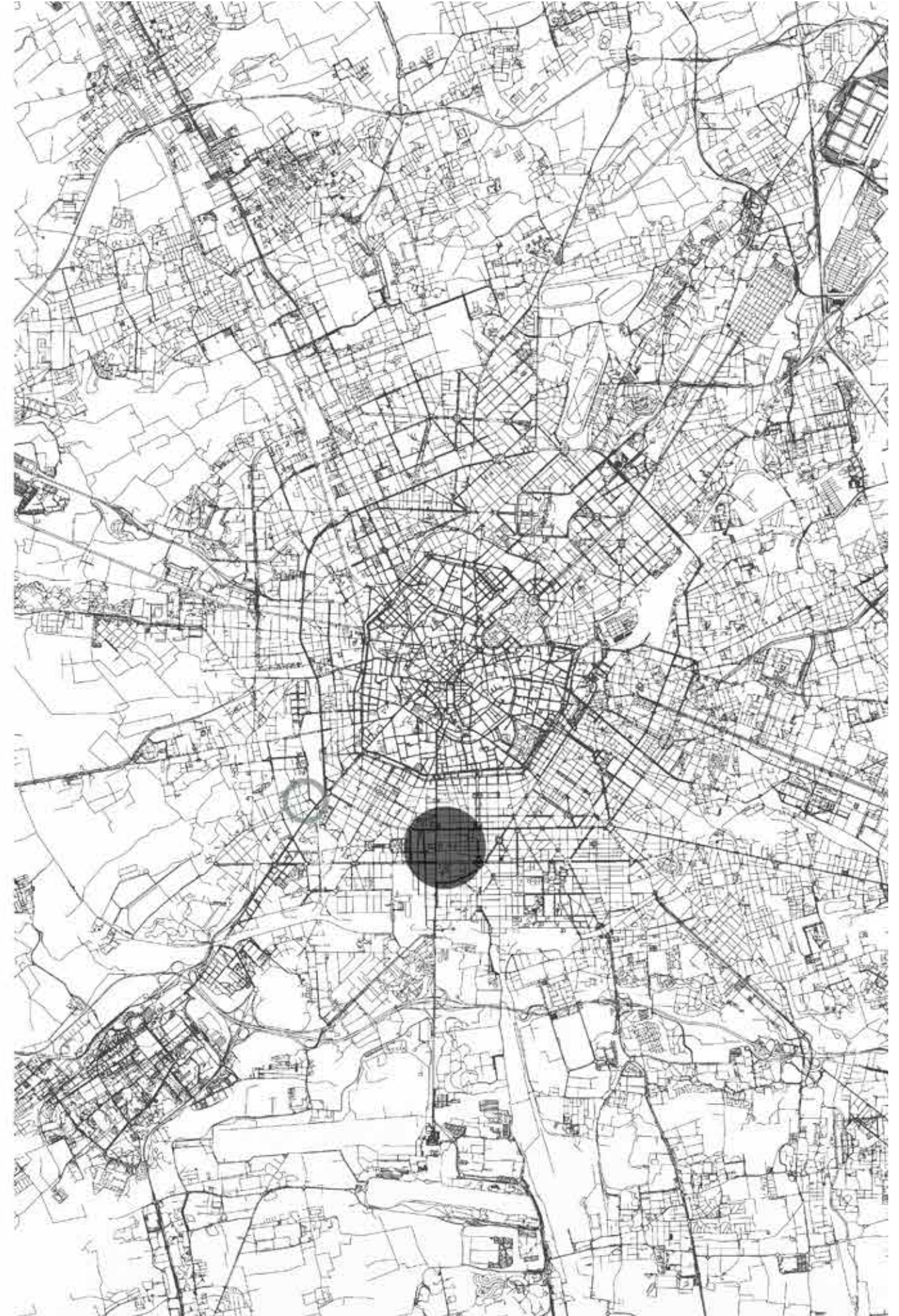
‘An ‘original’ object exists within the dynamic processes of history – technology, if used in the right way, can uncover the multiplicity of events that have shaped and altered an object from the time it was created by the artist. New technologies, in particular high-resolution digital imaging in 3D and colour, are also crucial for conservation.’

Resulting from this specific 3d scanning process, the records obtained through high-resolution imaging are also a 21st century means to ensuring that we create accurate documentation that will be handed down to future generations. Lucida Lab also allocated significant resources to educating specialists and the general public on the crucial role digital technologies play within cultural heritage preservation, as well as within the contemporary art world.

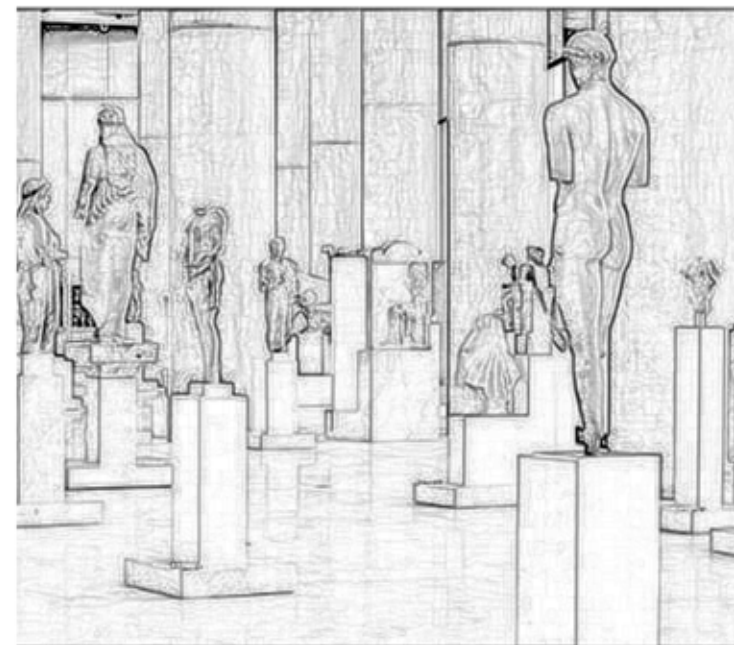
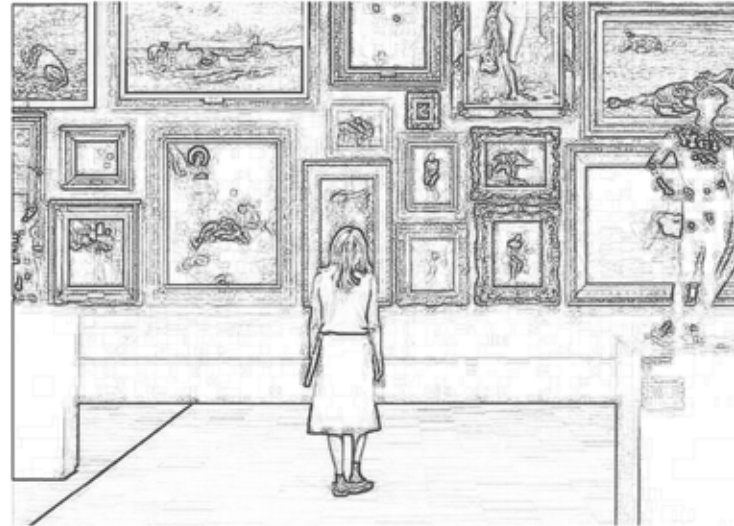
Lucida Lab is a prime example of how the importance of digital preservation is increasing rapidly, especially within our current built environment. InnovArte Milano aims to play a crucial role in advancing digital preservation efforts in Milan. By housing state-of-the-art facilities for 3D scanning, reproduction, and digital archiving, it will ensure the meticulous preservation of paintings and sculptures. InnovArte Milano will not only safeguard Milan’s cultural heritage but also make it accessible to a global audience, fostering education and appreciation.

InnovArte Milano Site

Lucida Lab Milano Location

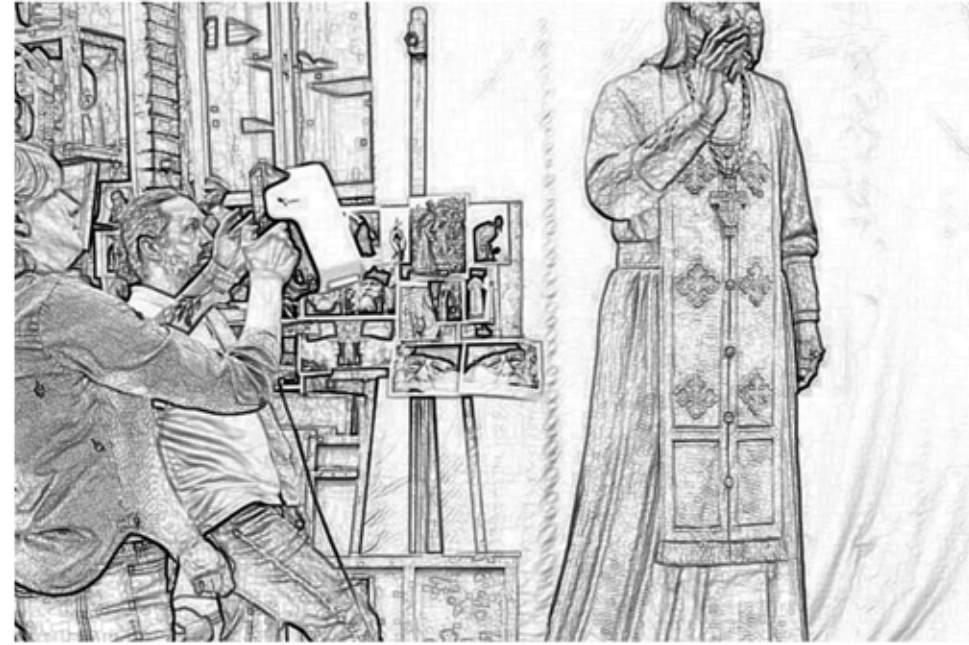
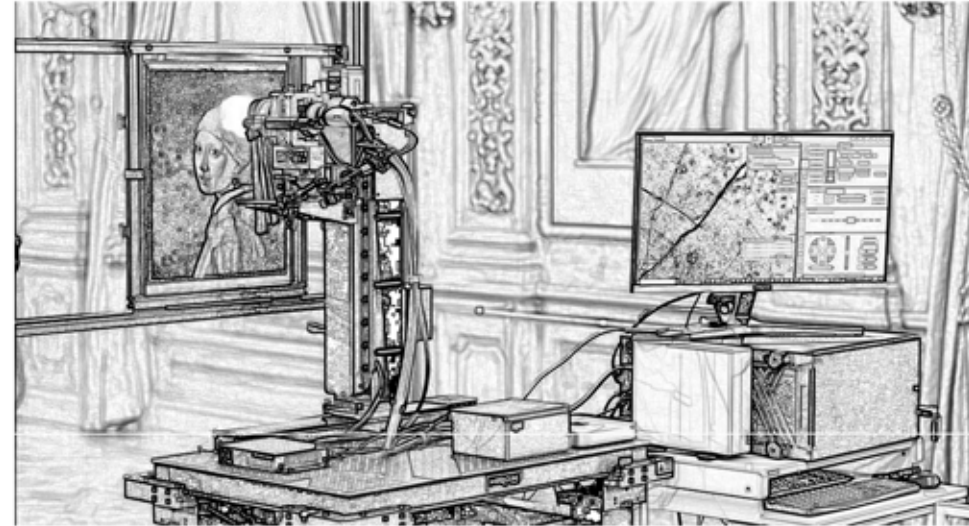


EXHIBITION



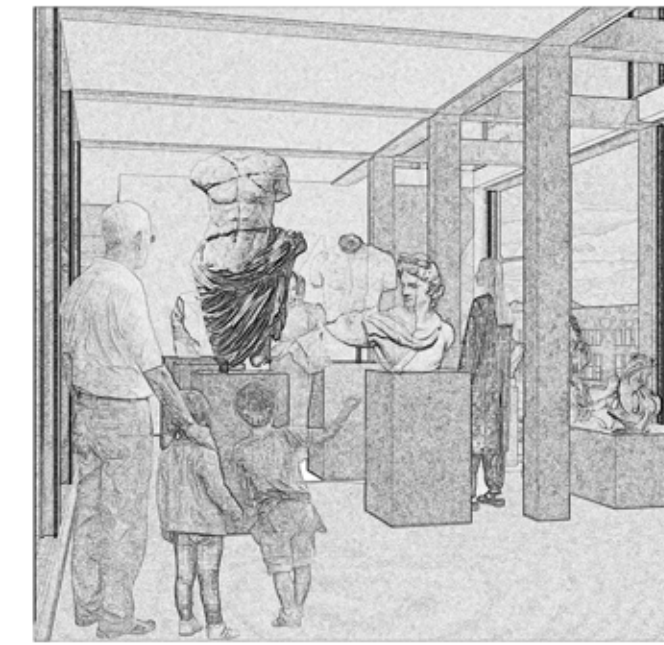
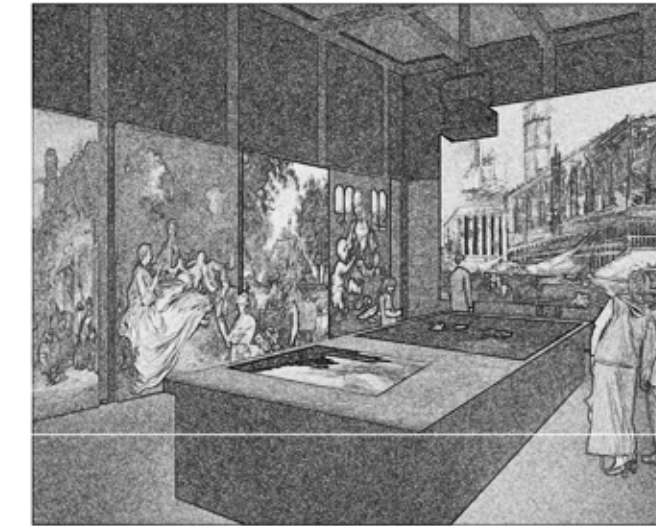
InnovArte is a continuously changing museum. Artworks come into the space, are displayed and then are sent to the upper floor to be scanned and preserved. The exhibitions are constantly changing, providing an array of different art styles, methods and artists.

PRESERVATION

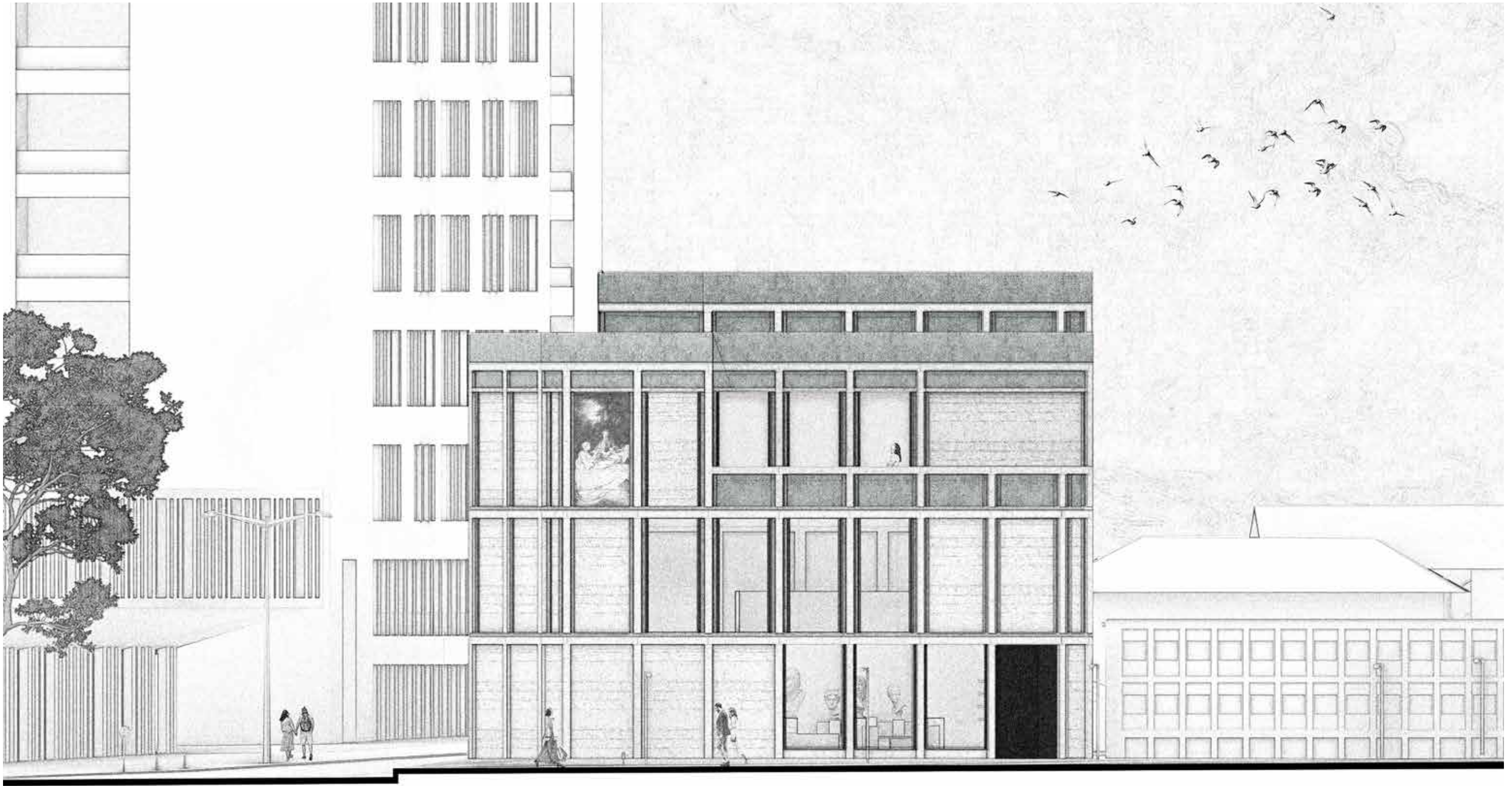


The first floor focuses mainly on scanning artwork and preserving their heritage. Sculptures, paintings all go through a rigorous process of being scanned in the highest detail to provide the best results for what third floor has to offer towards the program. There is a Quality Assessment Room, where the artworks are checked vigorously, a Capture Room where the scanning process happens, and a Control Room where everything can be supervised to achieve the best results for the next step of the preservation process.

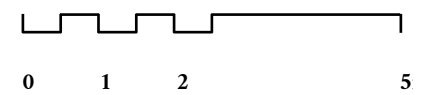
RECREATION

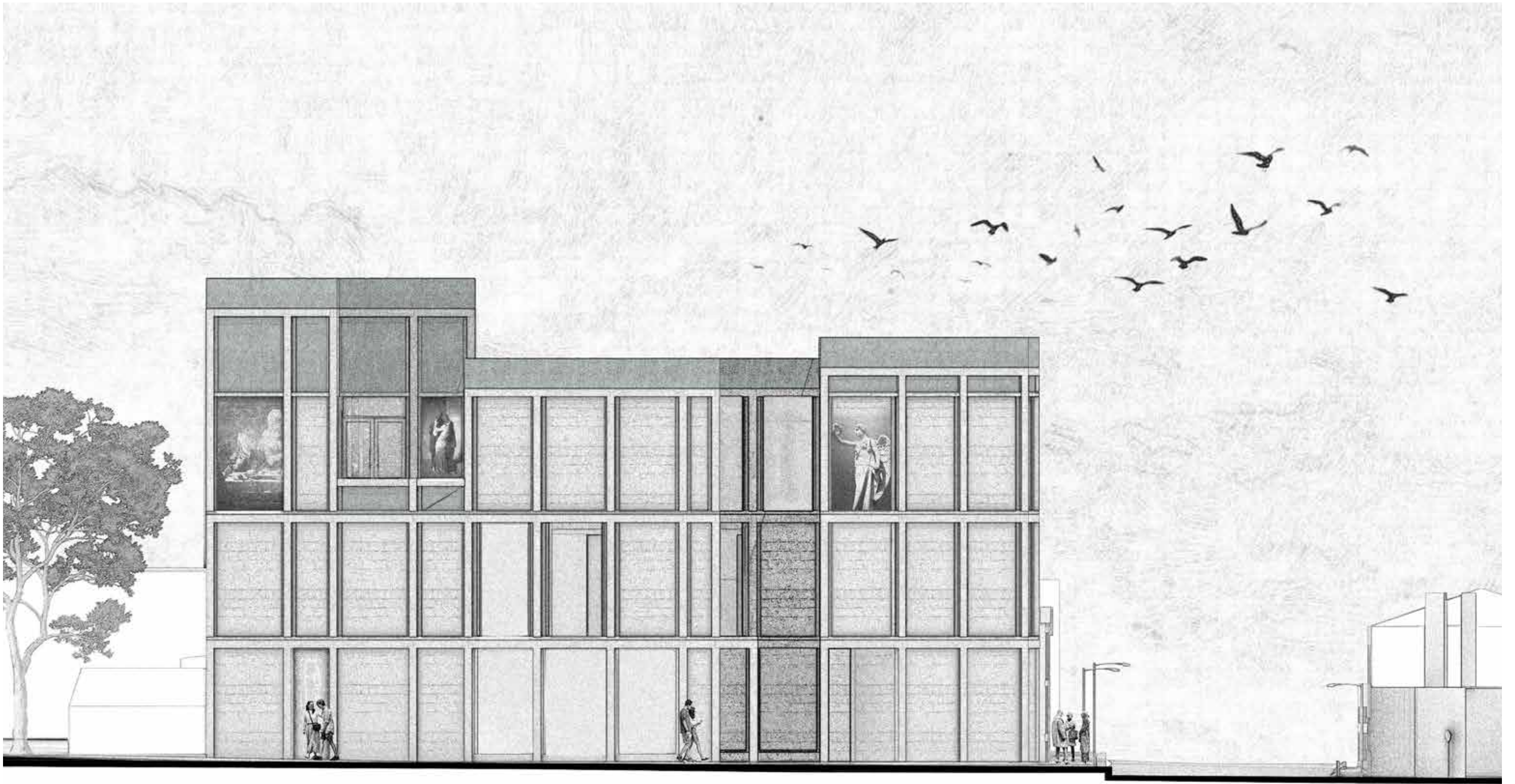


On the second floor, there is a workshop dedicated to recreating these scanned artworks. These recreations provide the opportunity for a tactile-exhibition, where people can feel sculptures in a way a museum usually does not allow due to the fragility of the object. These recreations are displayed alongside a projection room where all the scanned artworks are displayed in maximum quality, as due to the scans, now details can be seen that couldn't be seen before.

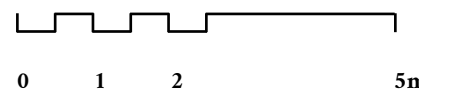


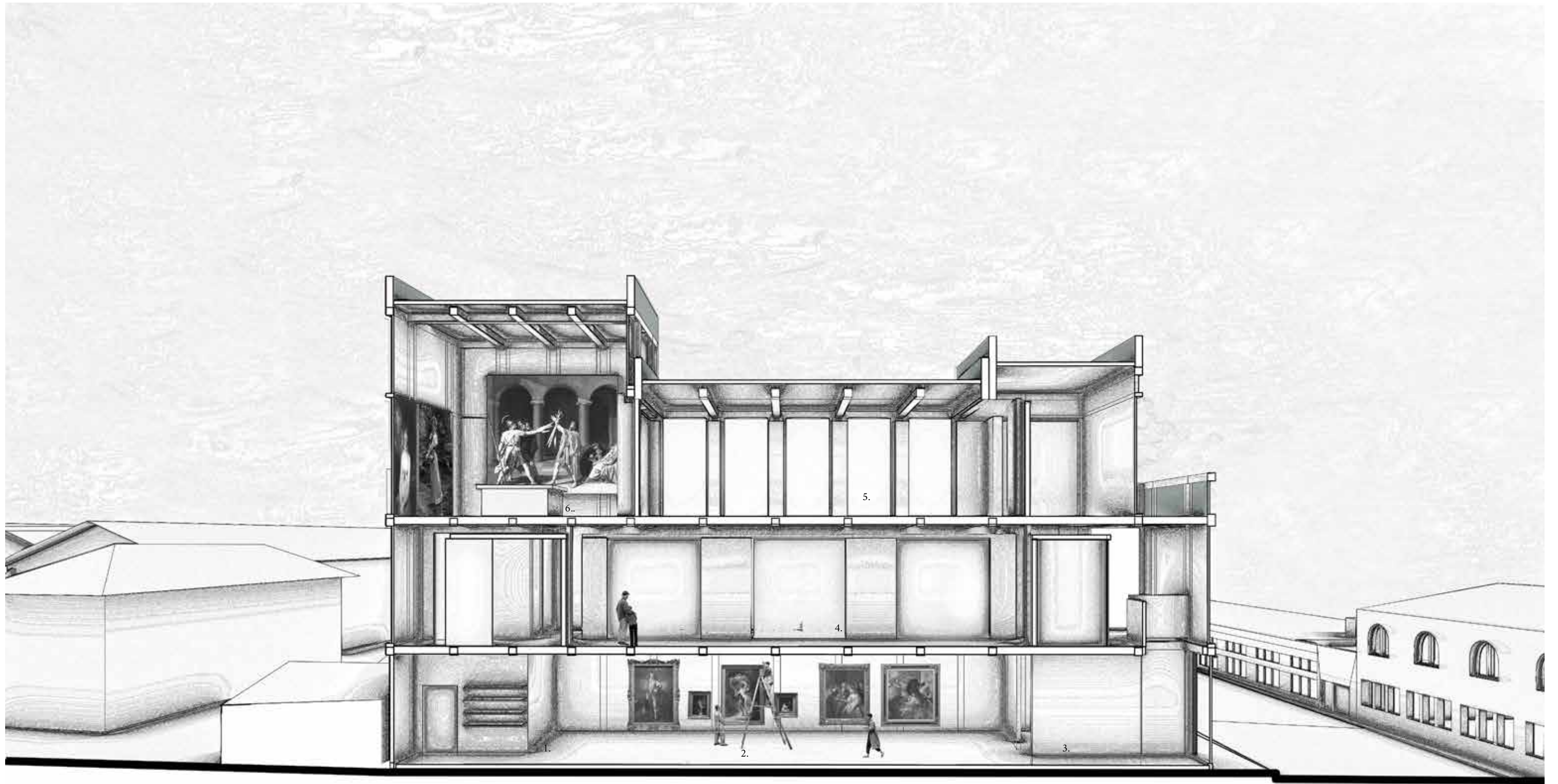
South Elevation





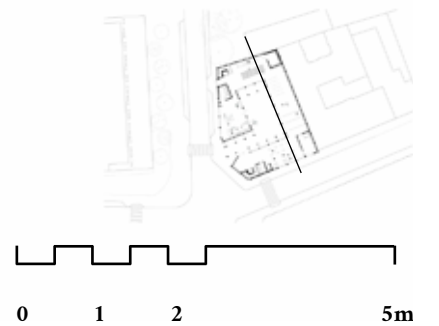
West Elevation





- 1. Gift Shop
- 2. Exhibition space of Paintings before scanning process
- 3. Loading dock for Artwork
- 4. Scanning pods
- 5. Workshop for recreating scanned artwork
- 6. Projection Room

Section B 1:200





1. Display Area for sculptures before scanning process
2. Scanning pods showcasing each step of the process
3. Tactile exhibition space of recreated sculptures
4. Cafe
5. Server Farm

Section A 1:200

