



Jessica Jarvis





QUEEN OF HEARTS

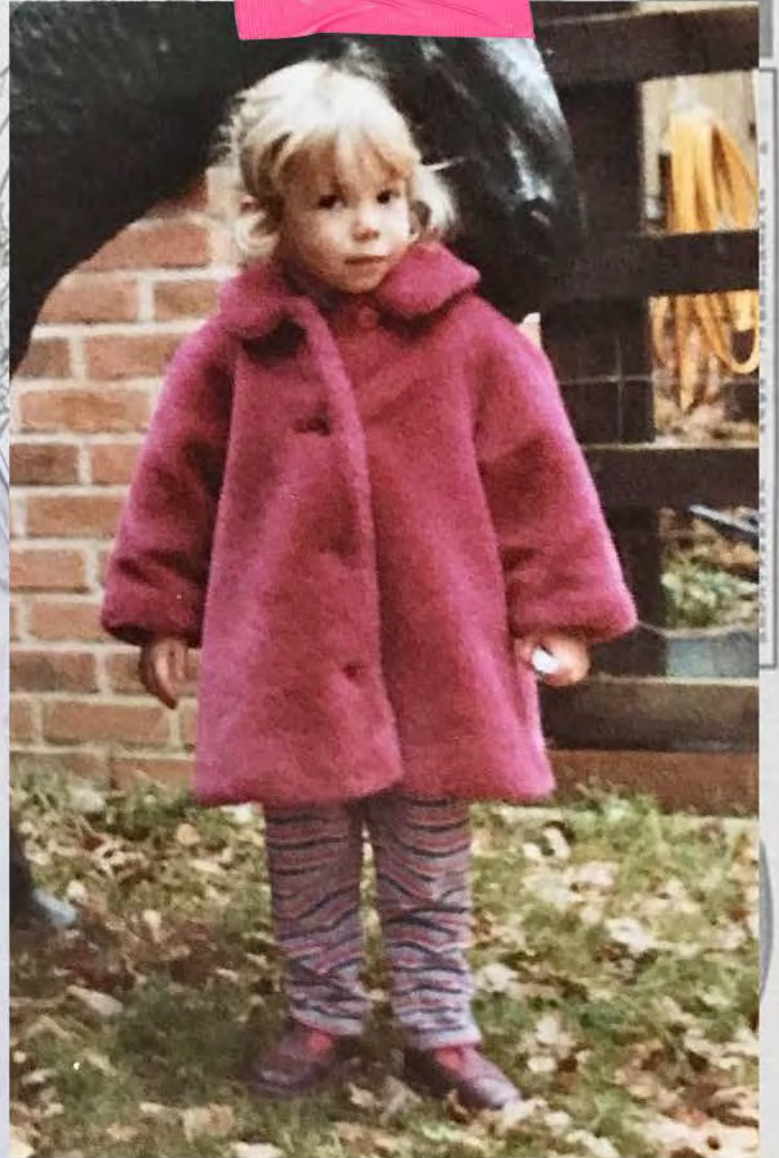
The girl who, one day, will be Queen to millions of subjects, has already captured the hearts of the vast majority of them. have yet to meet anyone who has a bad word to say about her and surely she is a young woman who will have a great impact on our lives in the future.

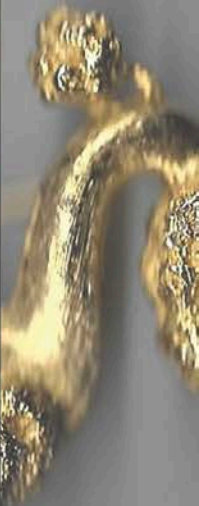
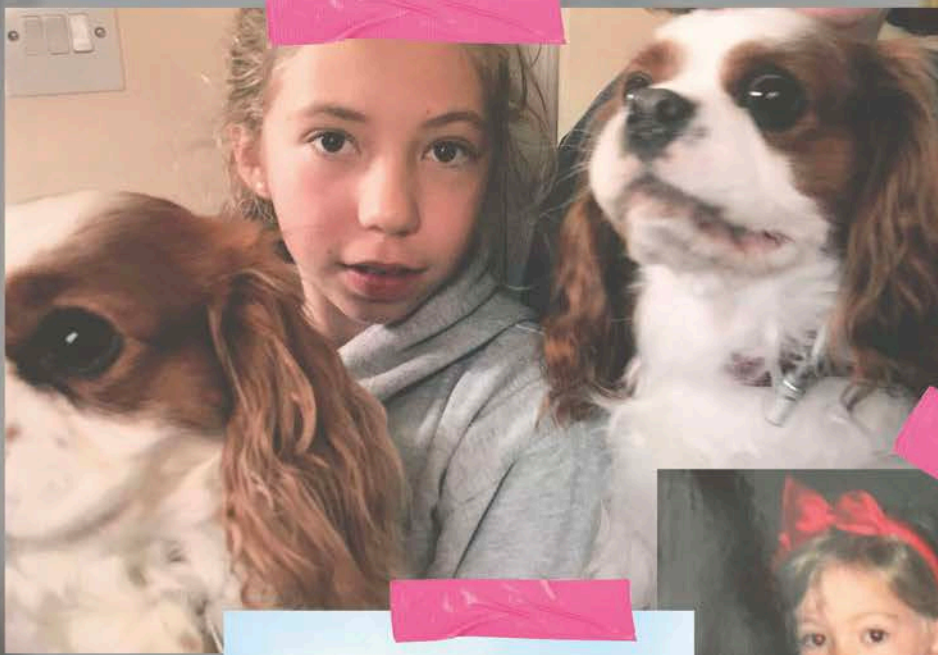
Her infectious girlish behaviour which often bubbles over the serious exterior necessary at official functions brings a ray of sunshine in these austere times and her marriage to Prince Charles has given everyone something happy to think about. For years, people were speculating about the bride the Prince would choose and he certainly has plenty of hints when, young healthy males, be they of beausies. And yet there was also something special about Lady Diana the moment her name was mentioned with his.

Delighted

She is the envy of many young or old. She is tall, extremely attractive with beauty which is somewhat endears her to all. She is the "girl next door" which would be delighted to bring home for Sunday. One thing I am sure about the future is have a great influence on the fashion world with a liking for feminine styles beautifully compliment times tomboyish attitudes. It seems to me that the fashion design world is going to be long before the rest of us. Lady Diana's sense of style is always been good — except rather unfortunate times.

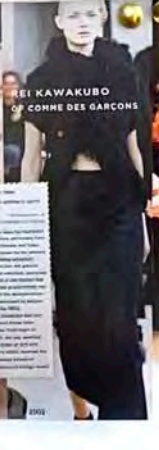
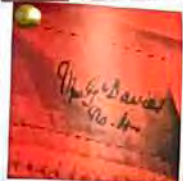
Di has earned that title already, says Sarah Ford







Cost	Cost	Cost	Cost
£100/m	£95/m	£75/yd	
Width	Width	Width	Width



REI KAWAKUBO
OF CORNE DES GARÇONS

2004

2000

2002

1987





inspo for
cables.

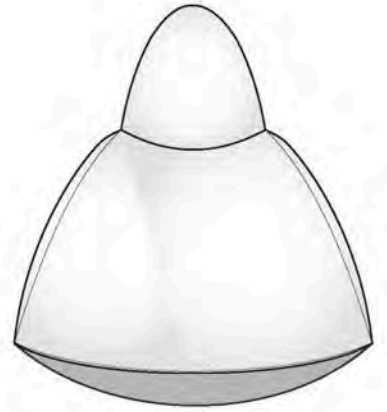


Colours

- Royal blue
- pink
- champagne
- gold

clashing colours.

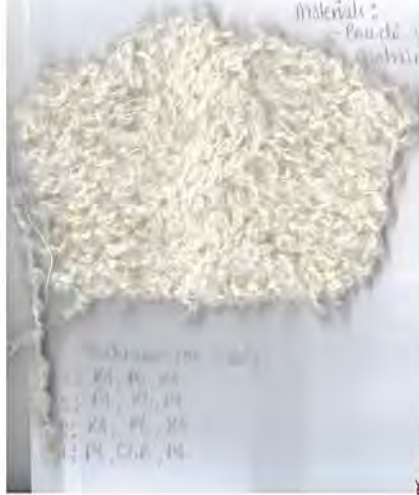
Look 1





collar

Bouclé Ensemble tests



materials:
- Bouclé yarn
- white yarn

unsuccessful cable in Bouclé test

↳ Gets too lost.

Knitted on 10mm needles.



1930's inspo for silhouette



Outfit 1

- Cream knitted bouclé
- Added extra fabric
- added loop beads
- x3 cables
- Tweed pleated skirt



pleats in tweed for skirt idea



long silhouettes
(long top, long skirt)



tube around the
waist



one
shoulder
with jewel

long silhouette

Knit,
Purl

Knit, Purl
sleeve developments.

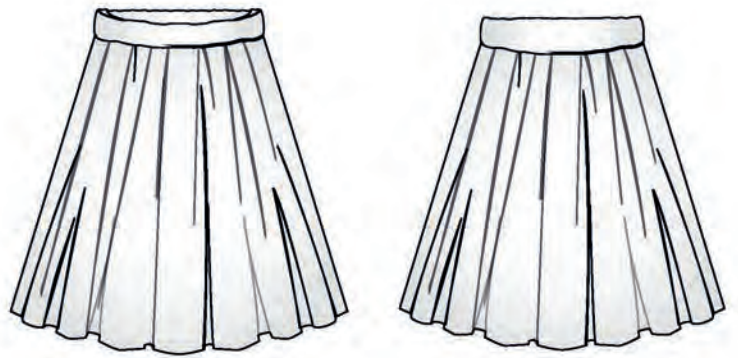
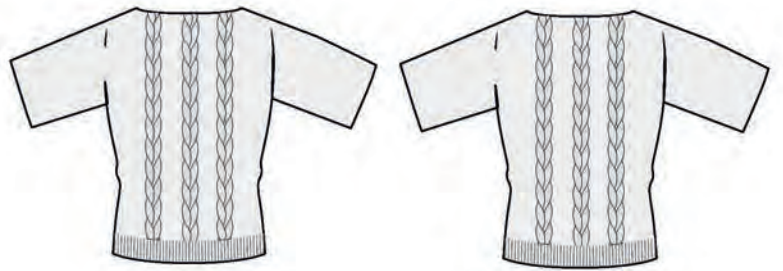
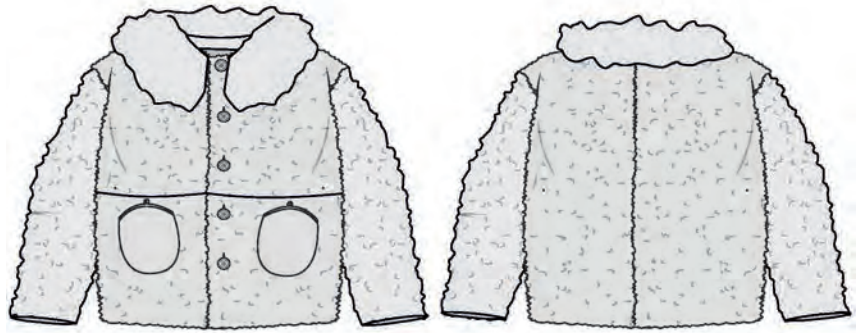


Knit on a
curve for a
sleeve

Add
Beads?



Look 2



use as technique!

feathers!



Ruffling, Pin tuck (neck) to into skirt - folding techniques

Details of this dress & using folding

The Ruff skirt



iron on canvas underneath to hold shape

pleated under waistband.

Added extra support behind to hold



Court dress c. 1775. Pale green silk brocaded with colored silks and metal threads. The dress is cut with a sack back and to accommodate wide hoops.

1775
Court dress



- Pockets into pieces

Pocket sample on shirt with knit (definitely to incorporate in designs)



Chase this inspo from dress



unusual clasp pockets on blue tweed jacket





Look 3



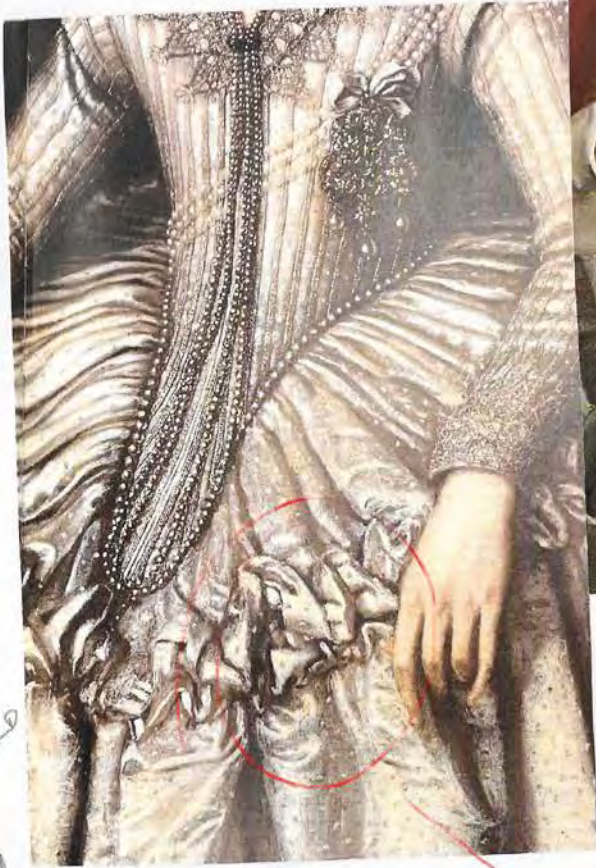


Shapes
↳ fur?

- fur
- brooch



Real goats
for



Ruffles, scrunched



low cut

Added jewels

Beading details in seams

- Beads into knit
- low cuts
- Jewels into work

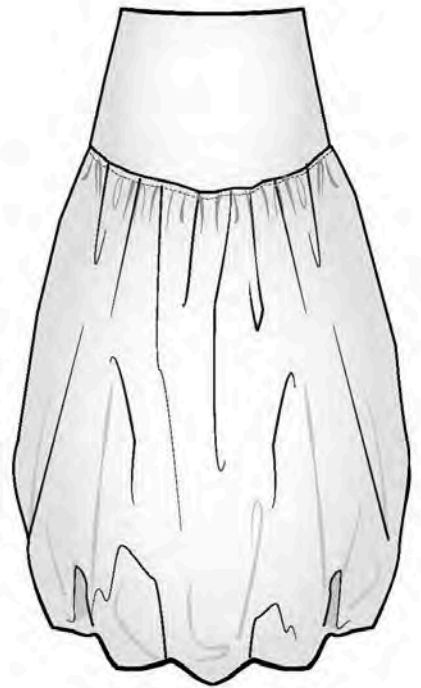
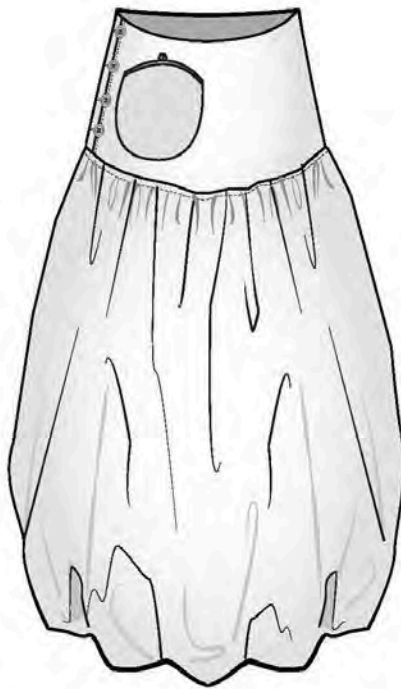
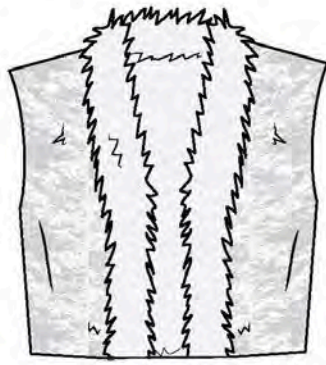


Ruffles

into 'puff skirts'



Look A



4

Matching tie
- Raglan sleeves
Buckle tie?

~~Agreed~~
do

top

pin tuck sleeves

jersey / or silk?

- low waist

Back

CASH

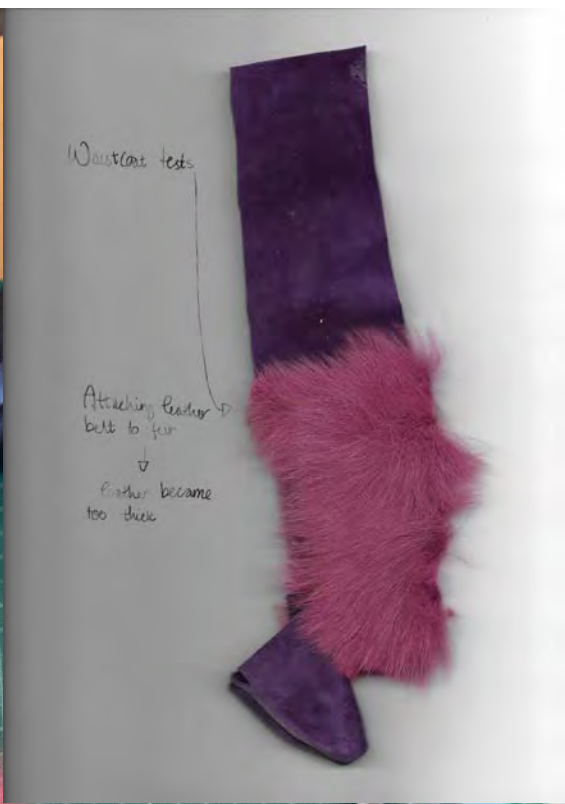
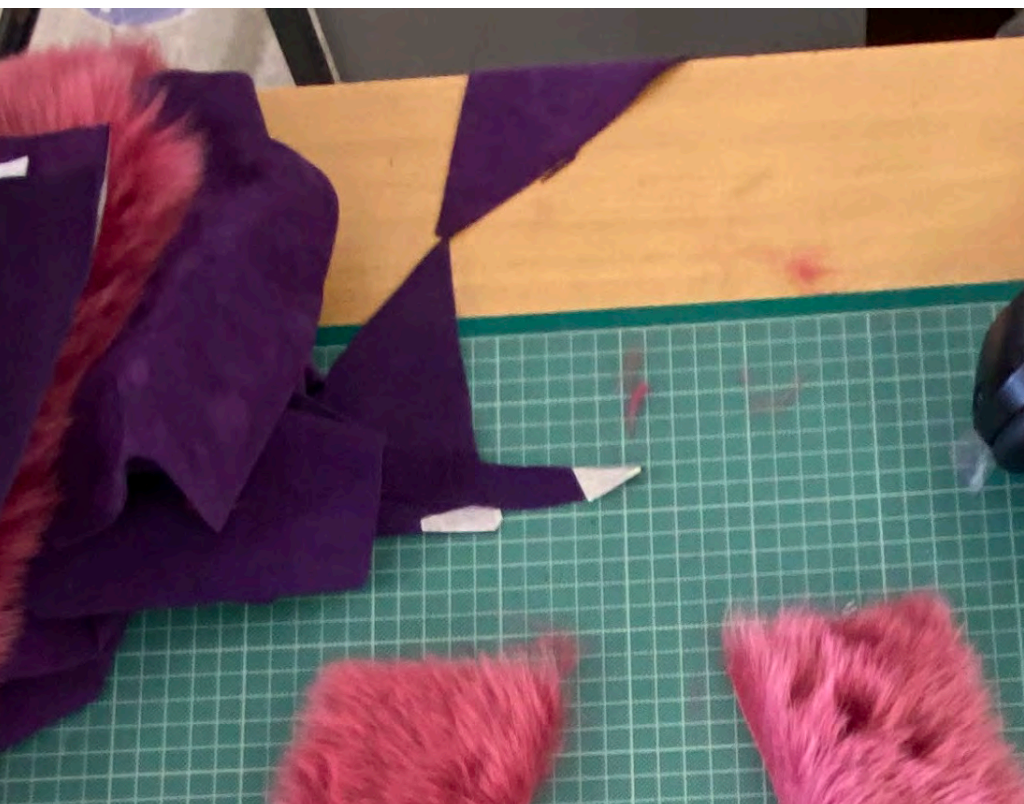
panels

pleats in back

with

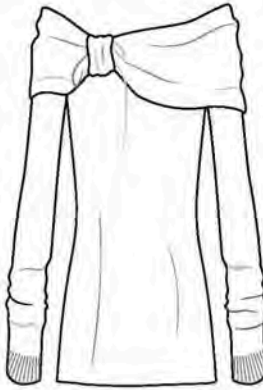


with
leather
waist (coat / sleeveless)

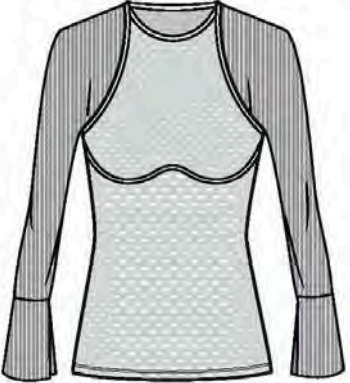




Look 5



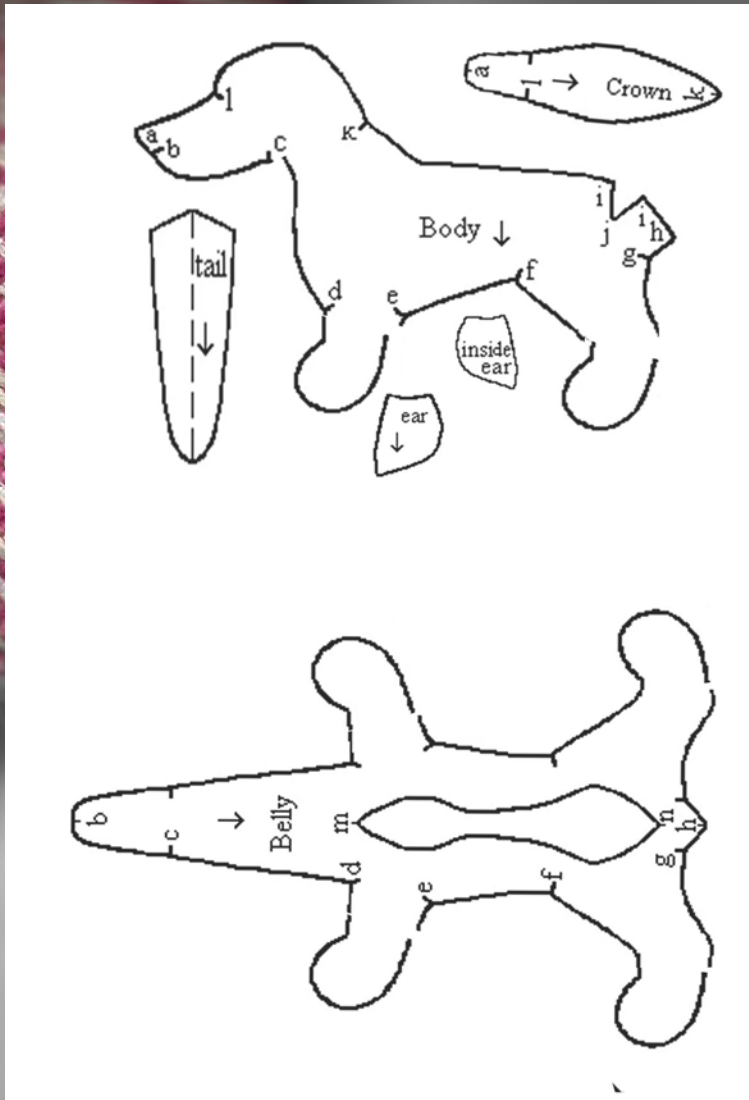
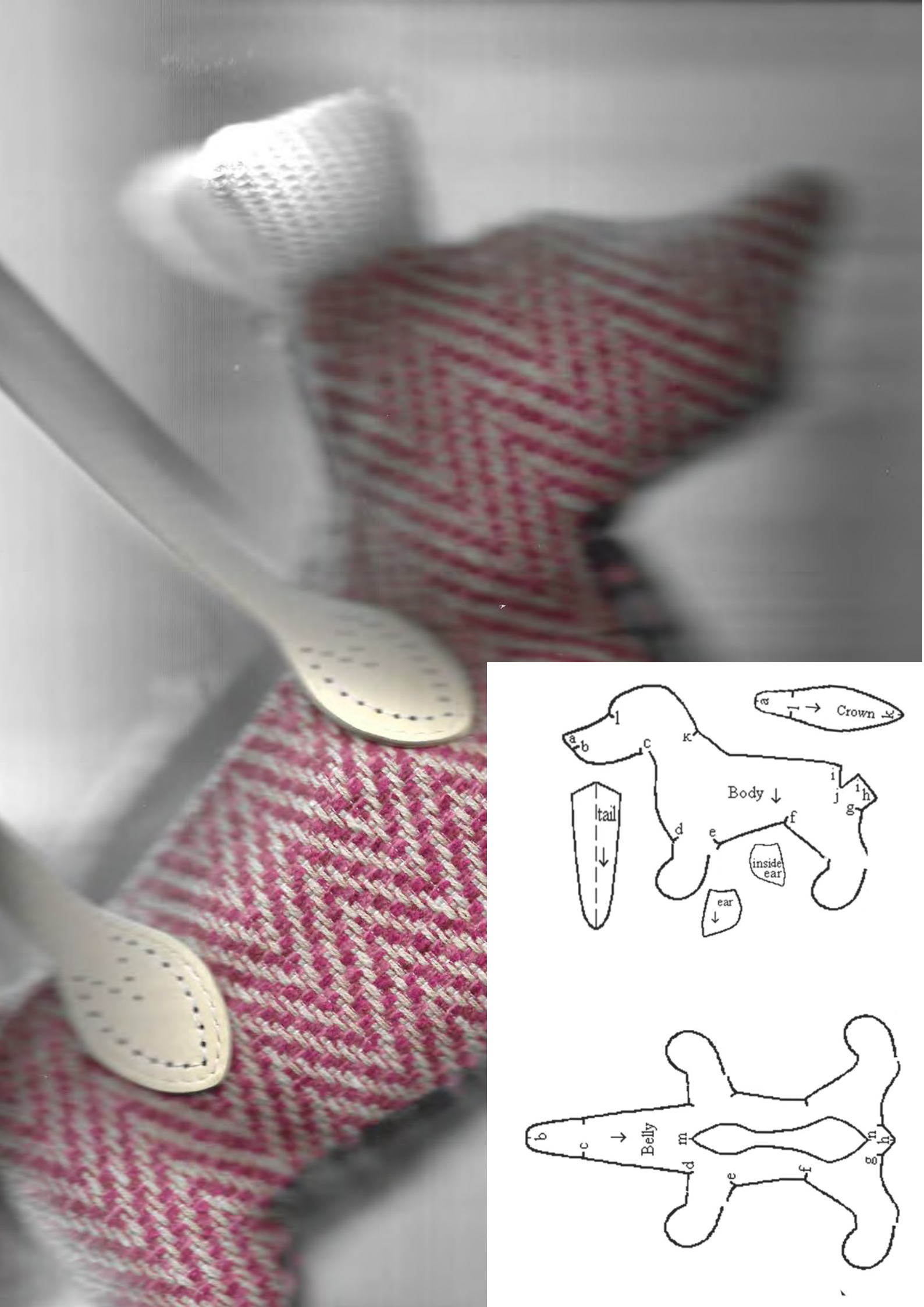
Look 6



Since the 16th century, buckles have been a key element in royal shoe design. The buckle, which was popularized during the 1500s by Anne Boleyn who wore it at the court in France. However, it has been used in England in 1522.¹⁶ Elizabeth I dissociated herself from English blood, and she did wear the "Hollander" shoe. She did wear the "Hollander" shoe. She did wear the "Hollander" shoe.



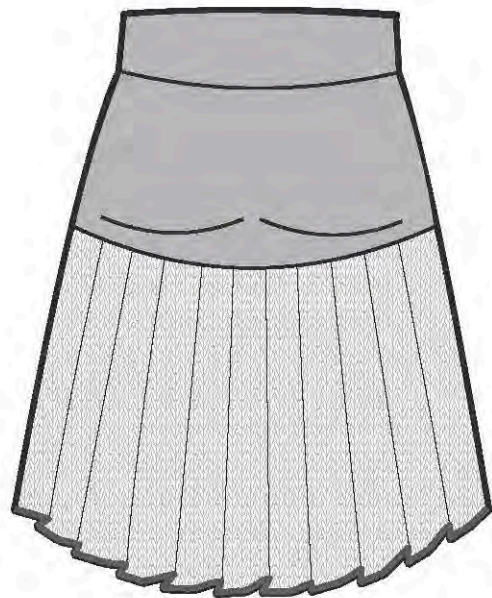
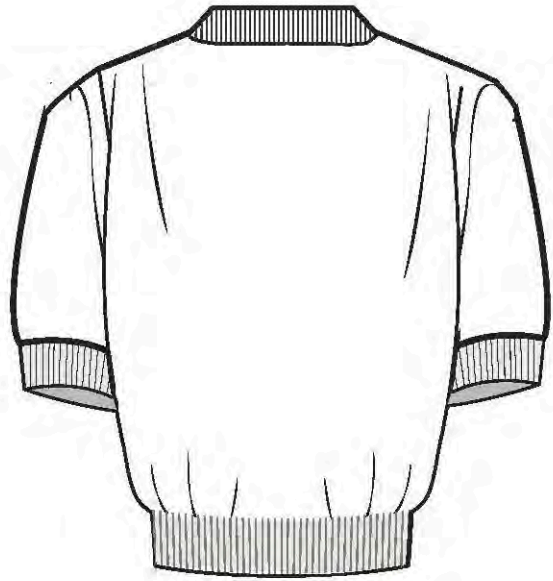
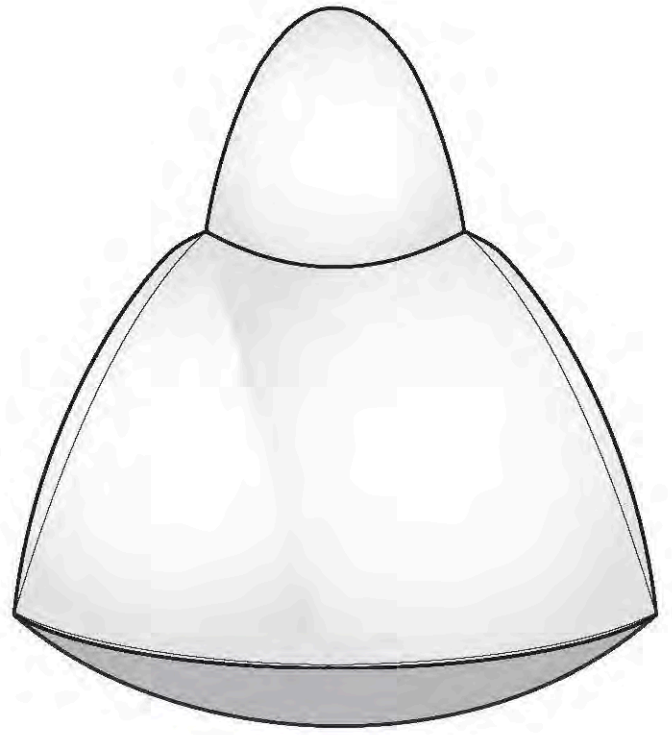
- Buckles
- Key element for royal shoe design in the 16th century



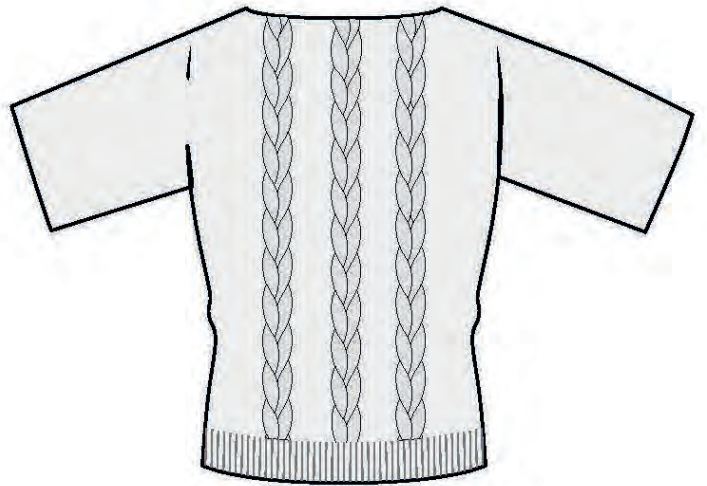
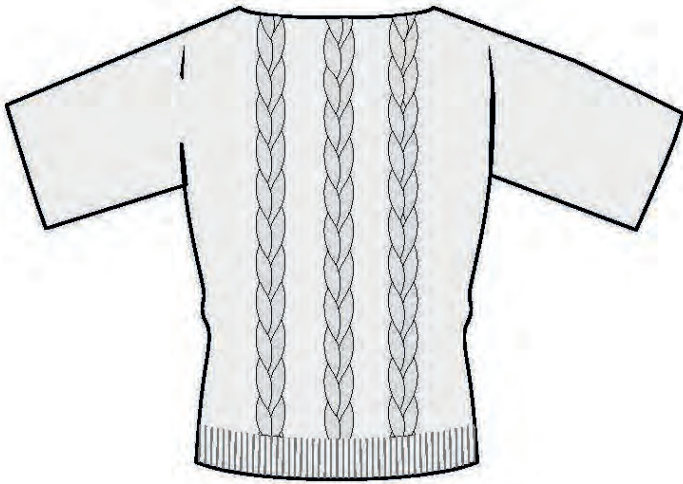
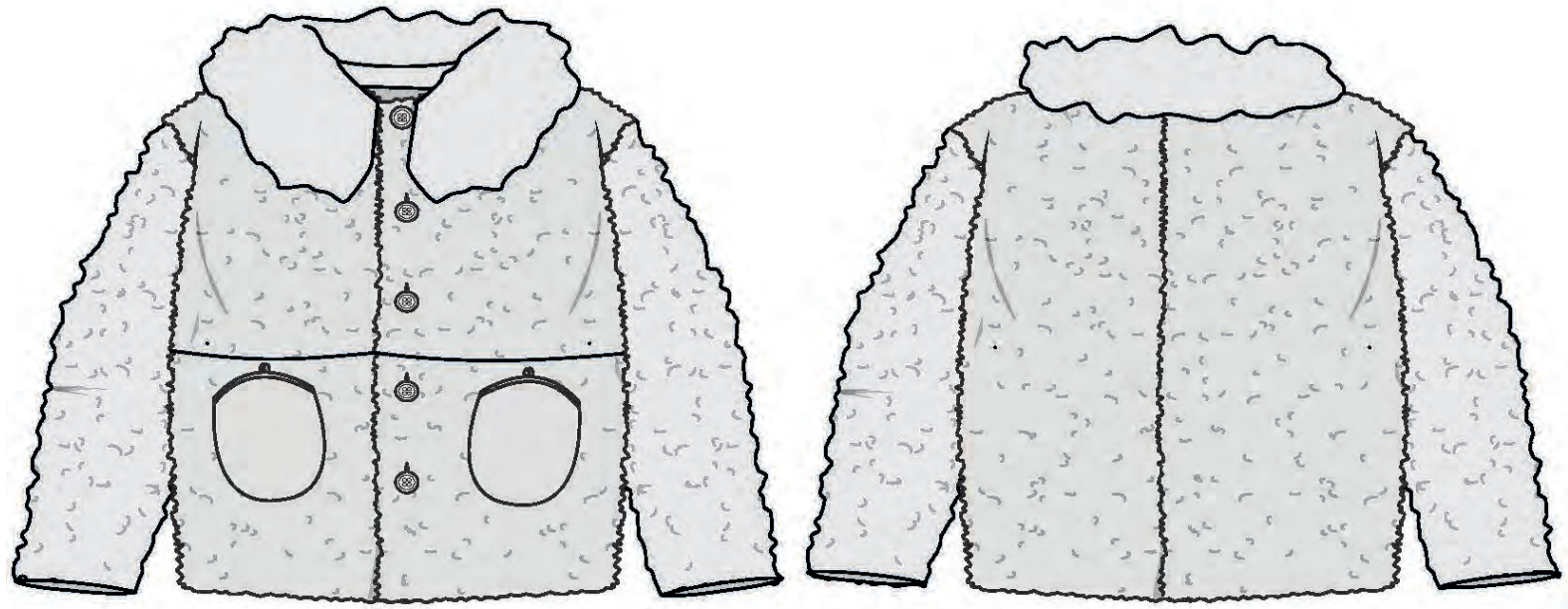


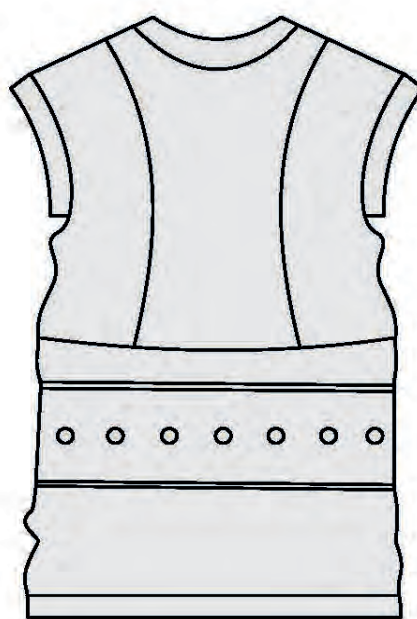
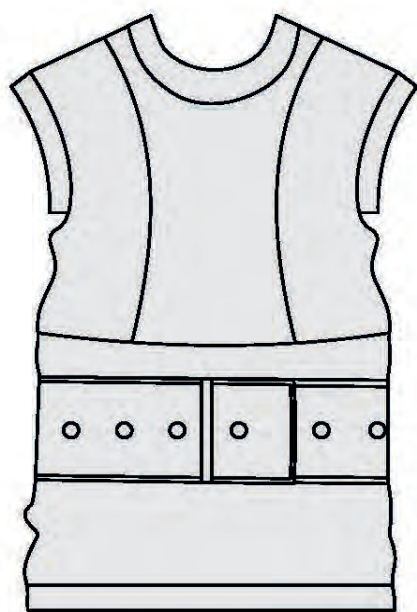


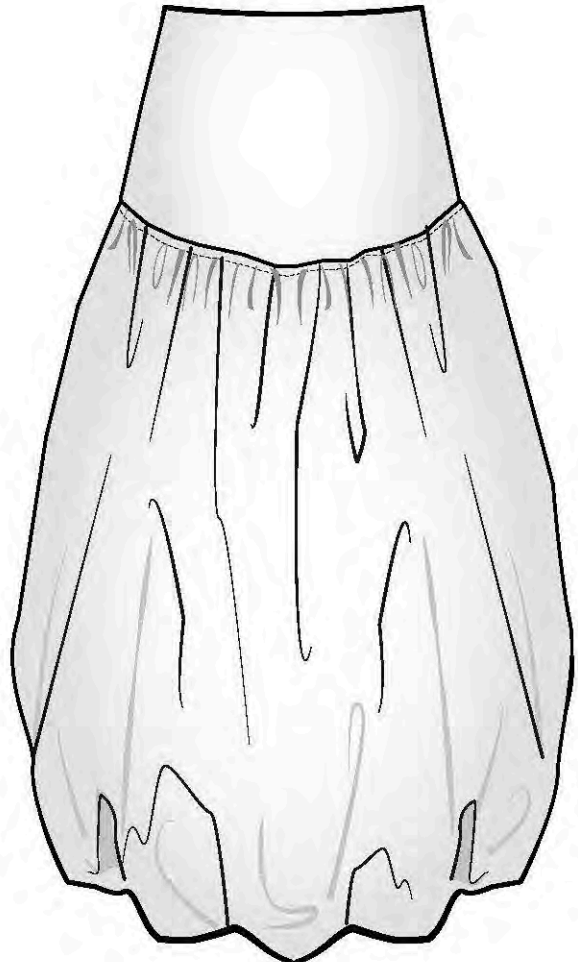
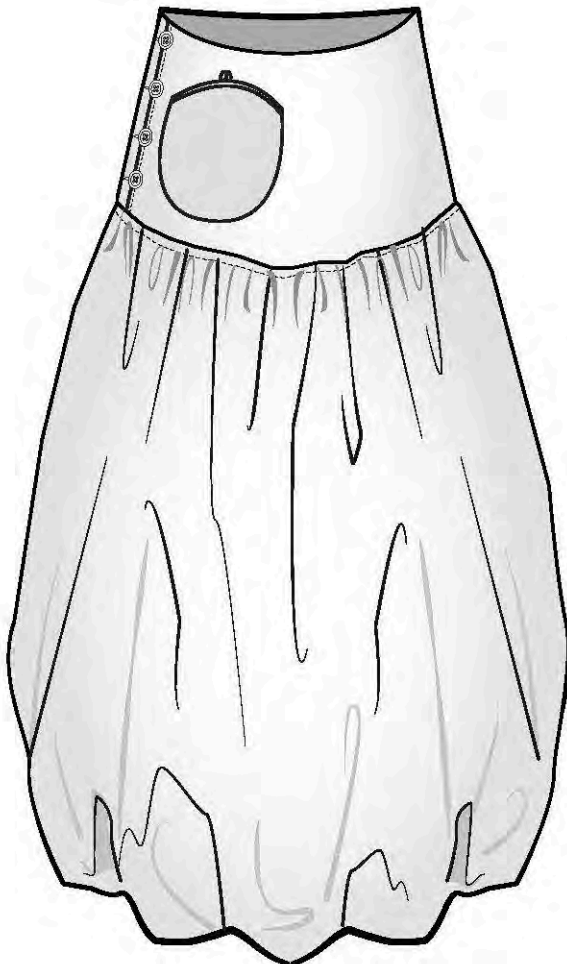
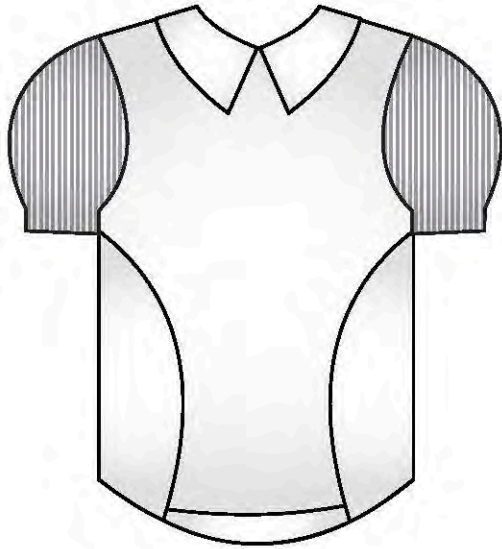
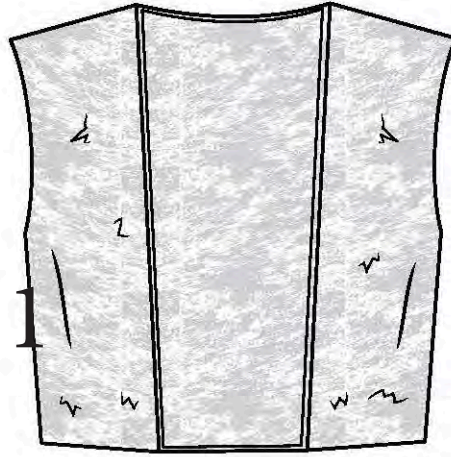
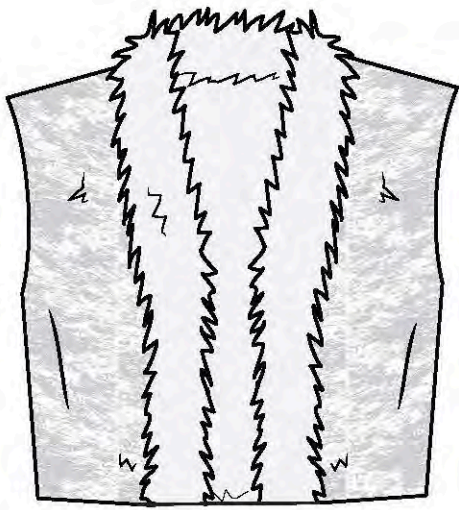
1



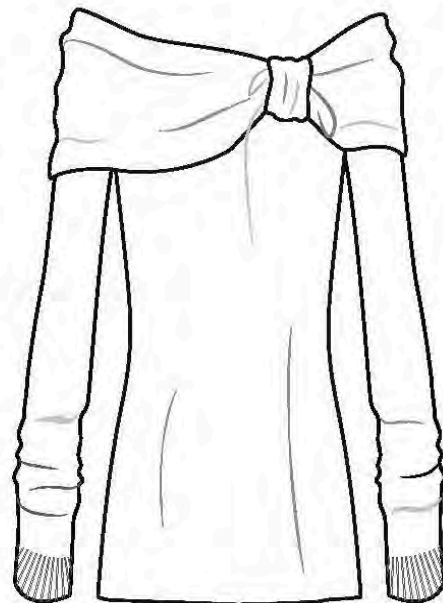
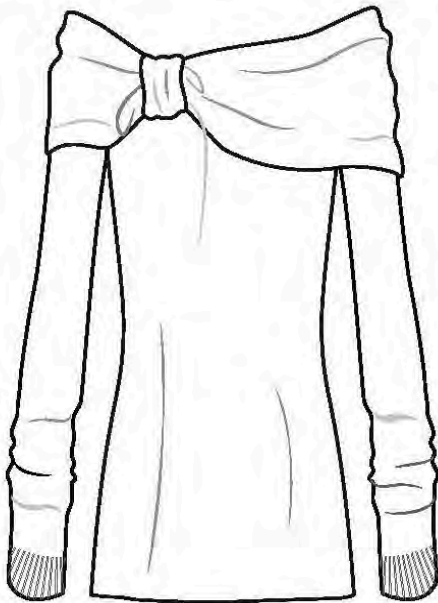
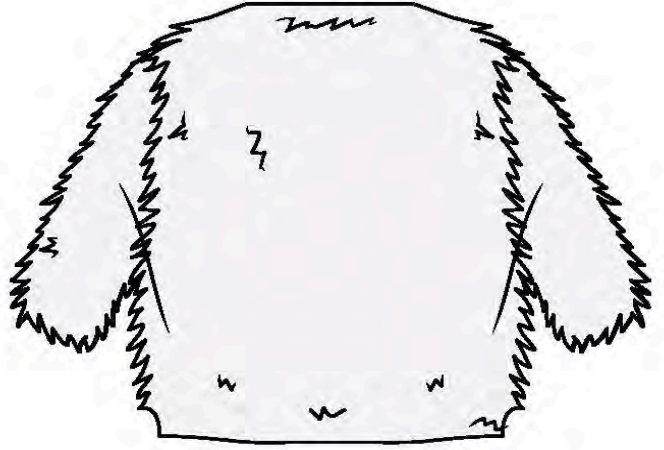
2



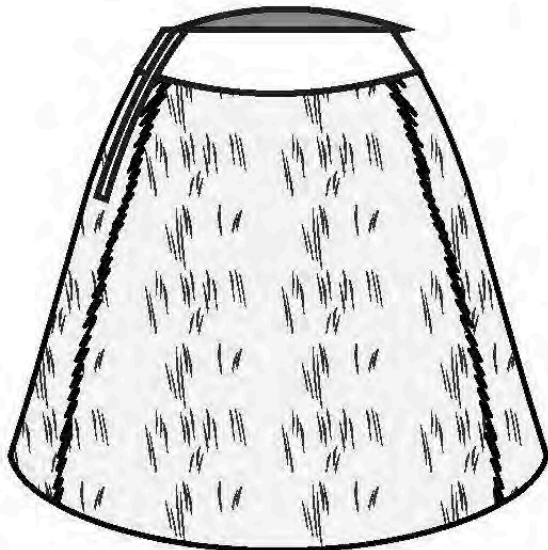
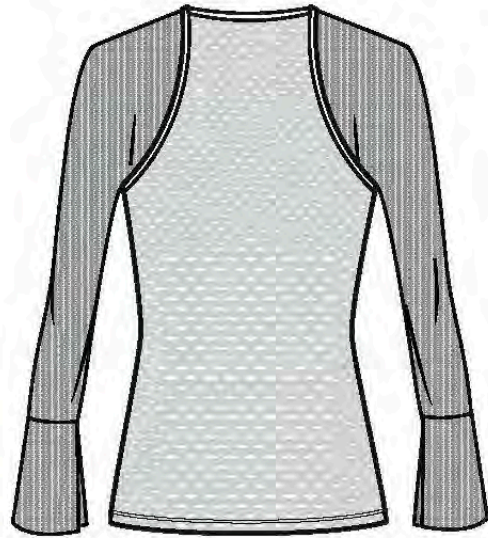
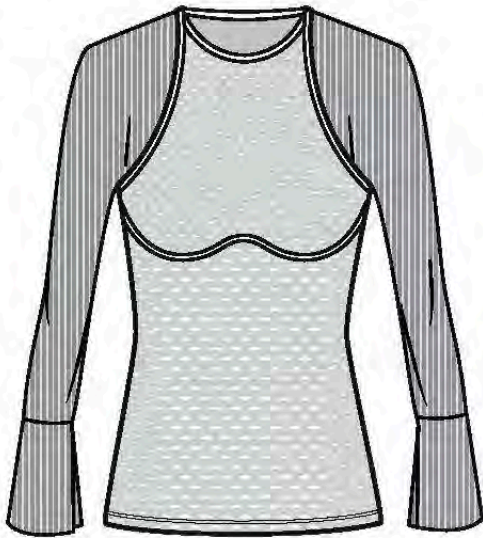




5



6









malissa / Y/PROJECT

malissa / Y/PROJECT

MALISSA

MAMOLO BLANIN®

MAMOLO BLANIN®

MARIAN





















Creative Director: Jessica Jarvis
Photographer: Leeloo Sinclair

Stylist: Jessica Jarvis & Maddie Gray