



Collection Portfolio

Mariana Maass



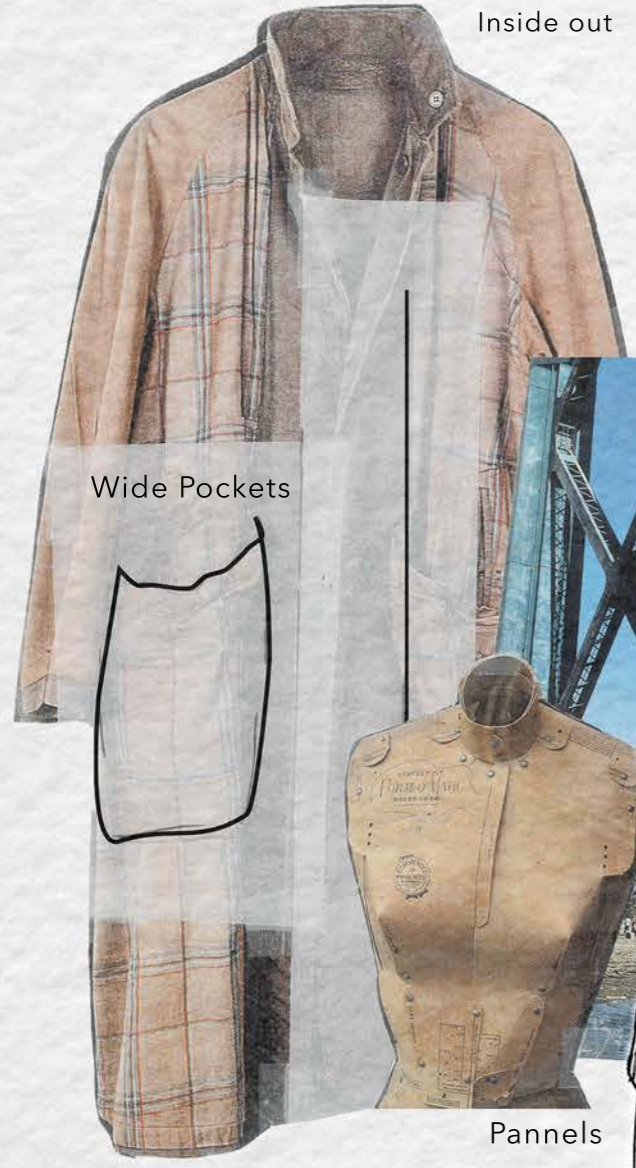
Pier 24 is a collection inspired by travel and the thrill of exploration. As travellers are mesmerised by looking at everyday landscapes for the first time, they find the joy and beauty that we sometimes neglect in our daily lives.

As the collection draws inspiration from my travel photography and the exhibition "Accidentally Wes Anderson," it aims to invite the wearer to appreciate their surroundings. This optimistic outlook is reflected by the bright colour palette and carefully curated fabrics.

The collection also commemorates my grandfather's sense of pride and positivity in self-expression through clothing.



1950s Walking coat
Inside out

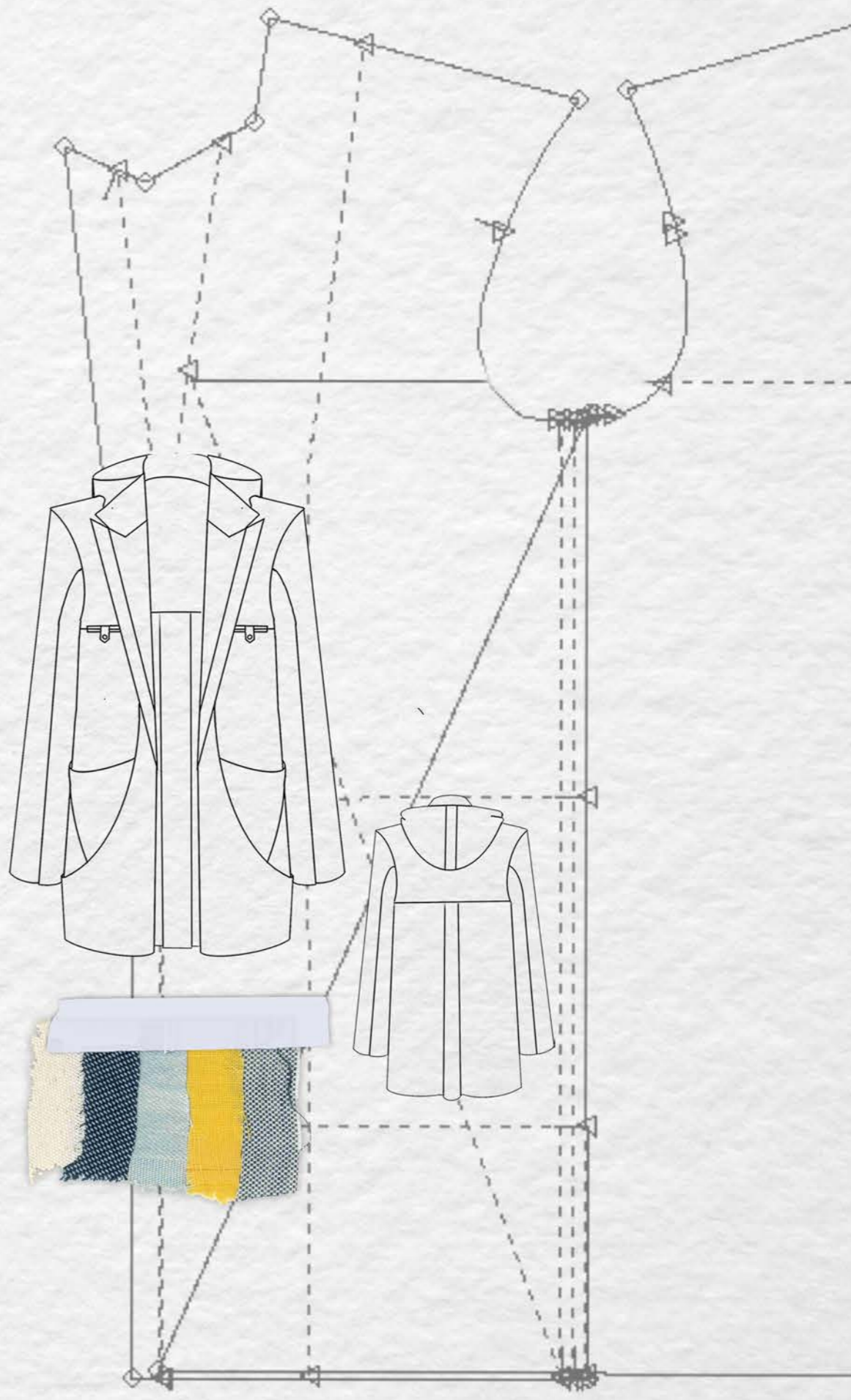
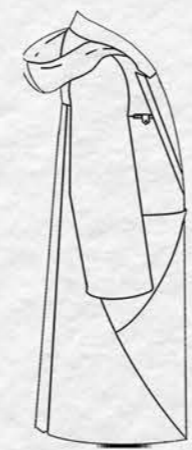
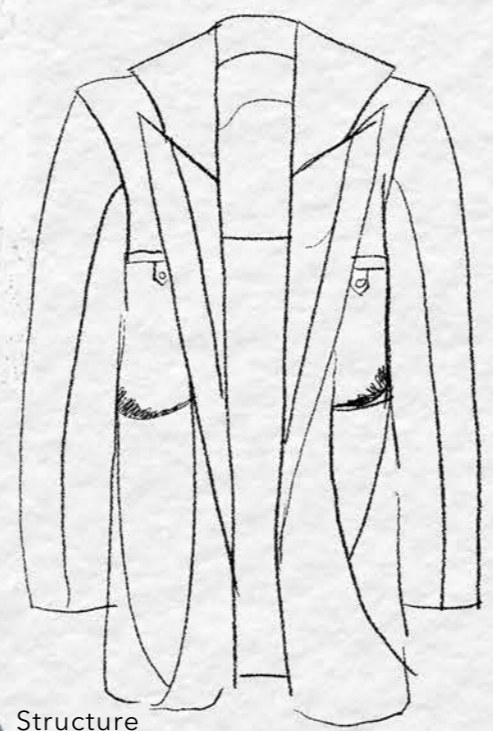


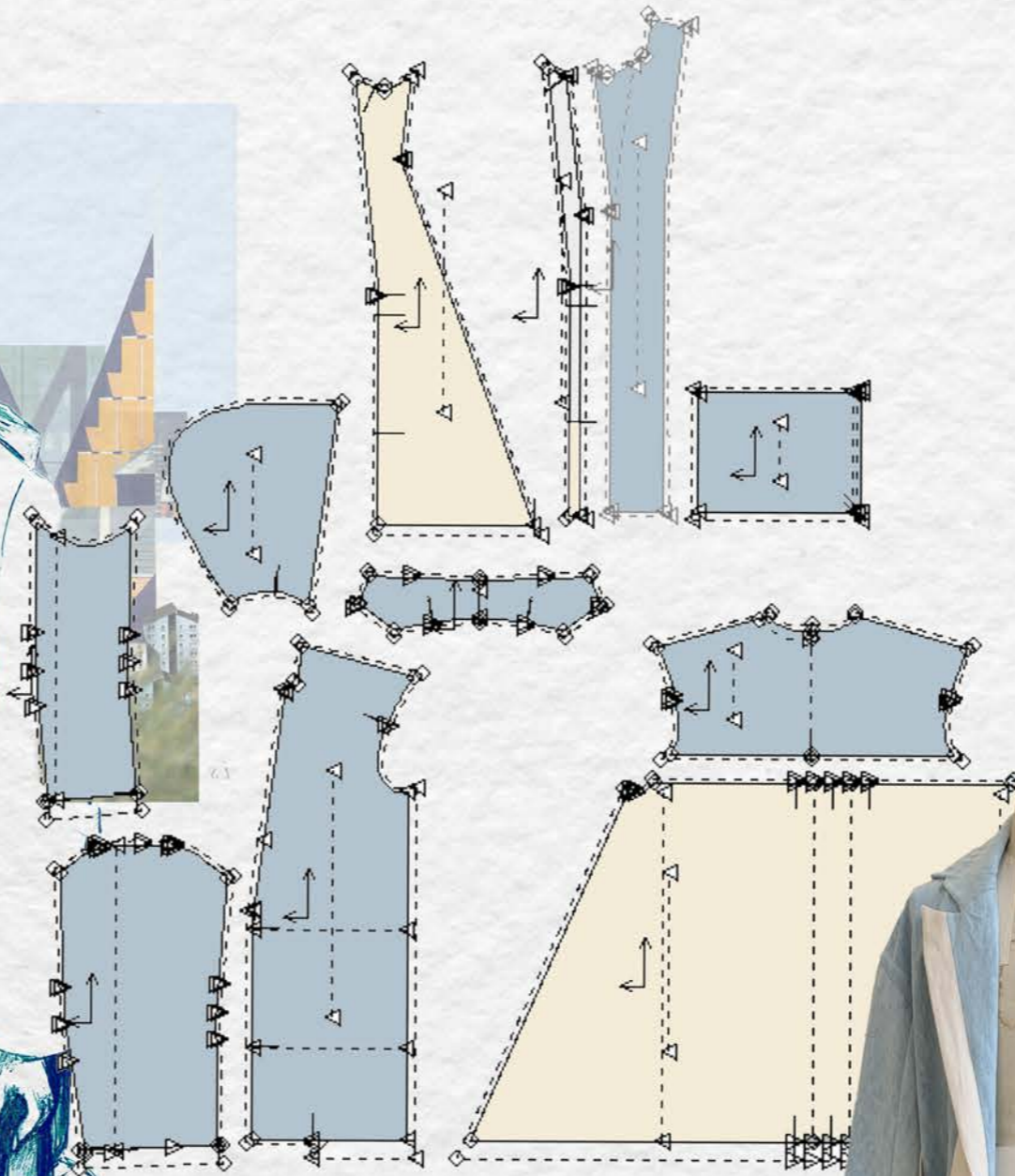
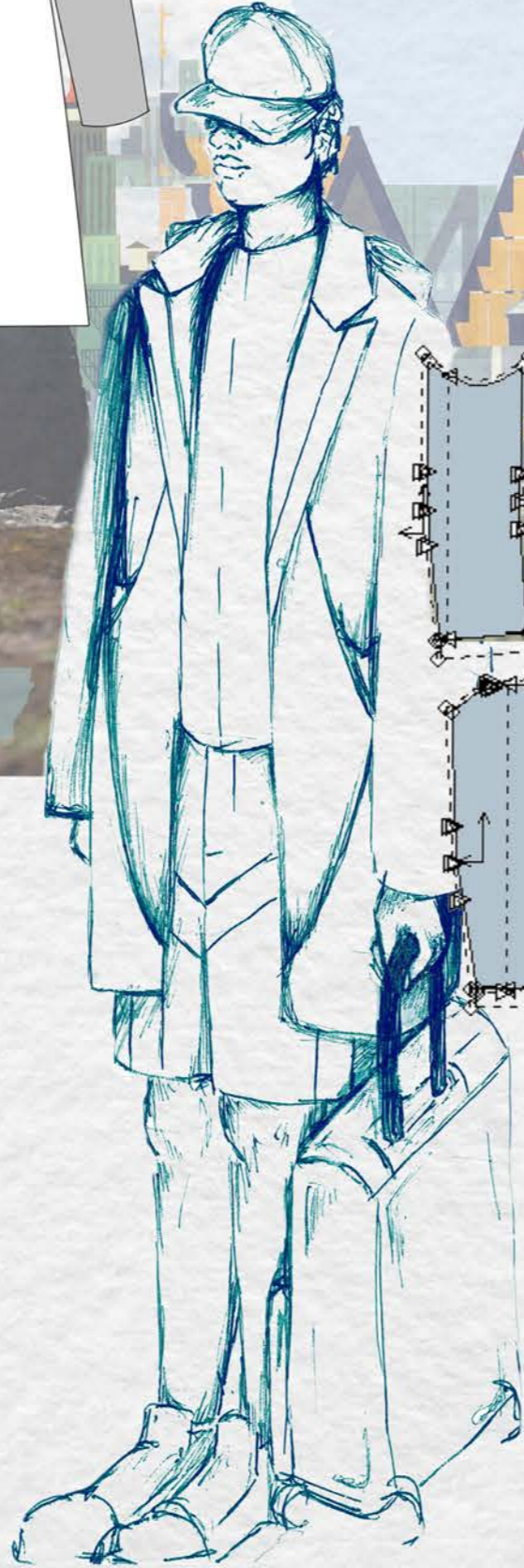
Wide Pockets

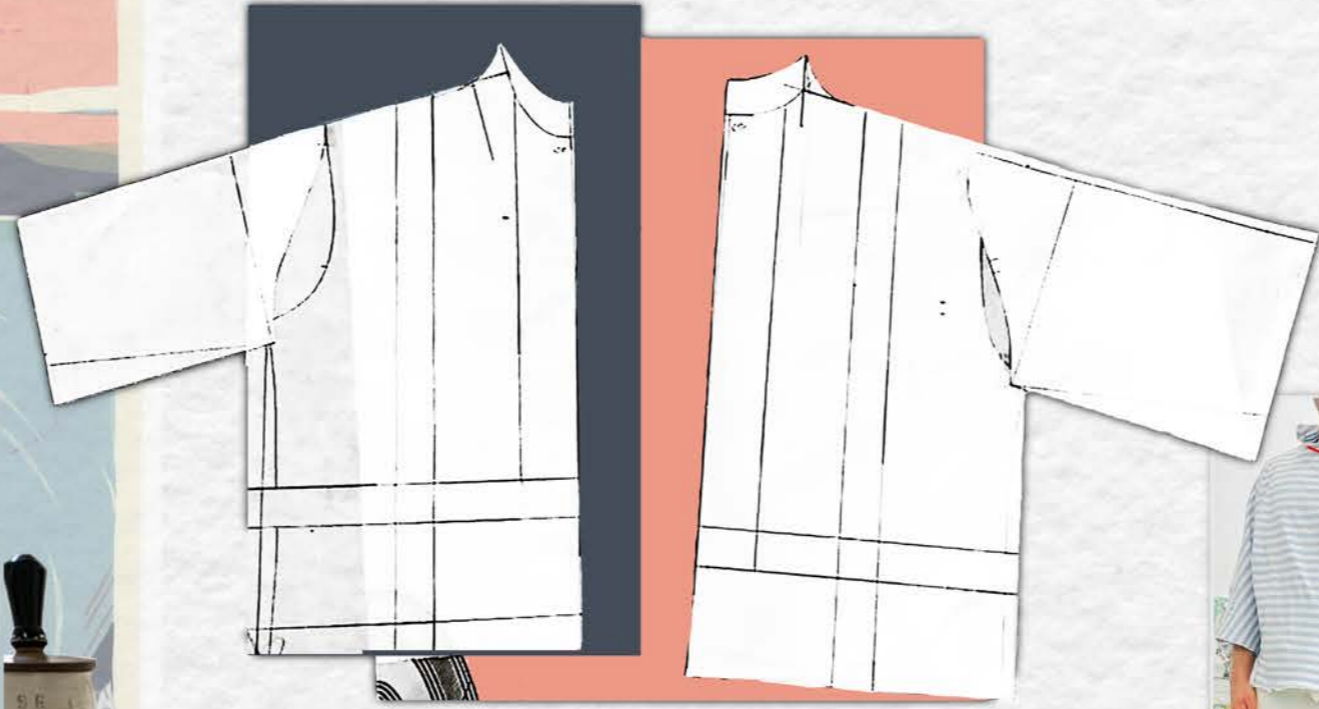
Pannels



Structure



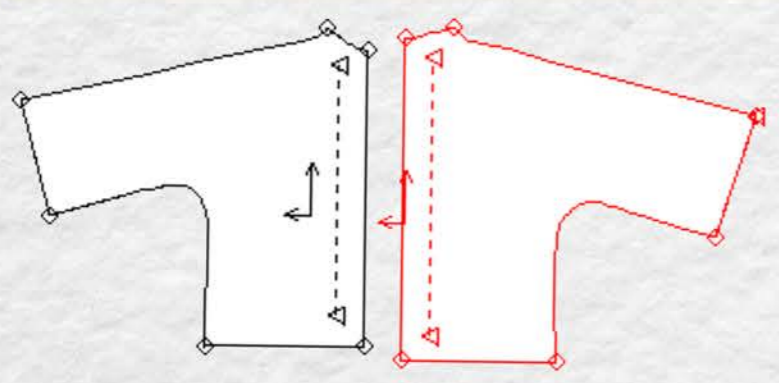




Jersey



Calico



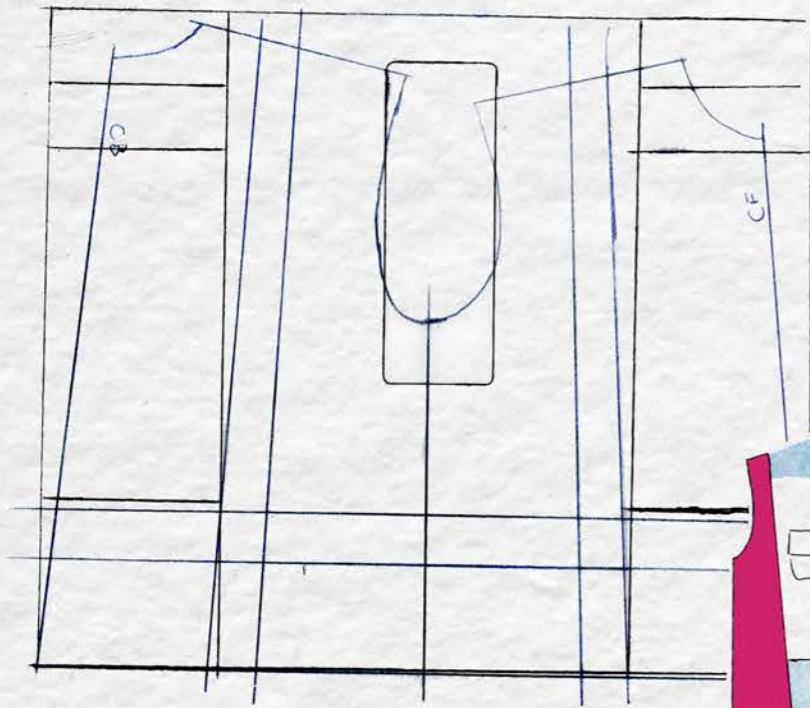
Alterations after fitting



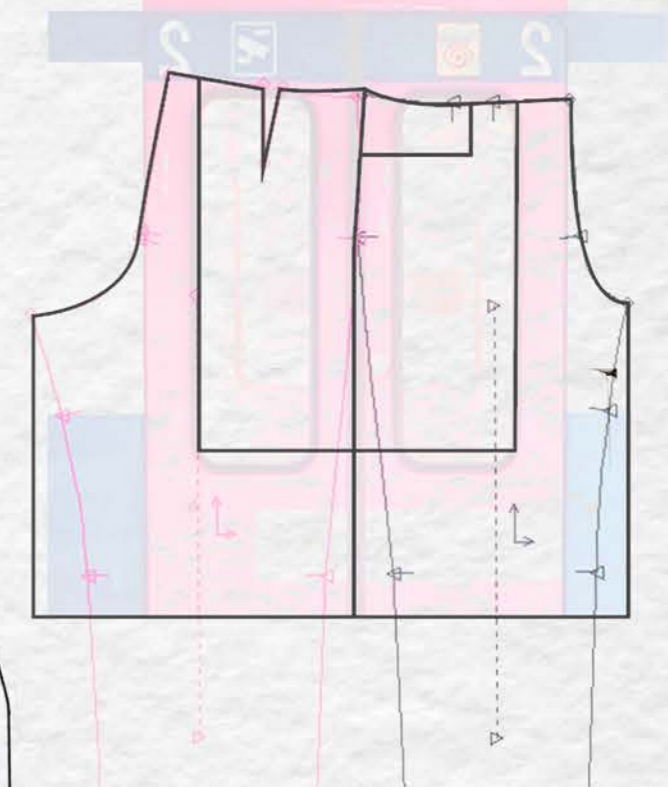
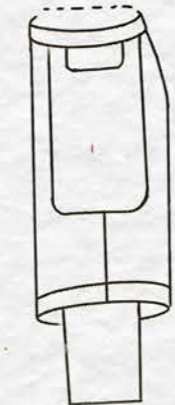
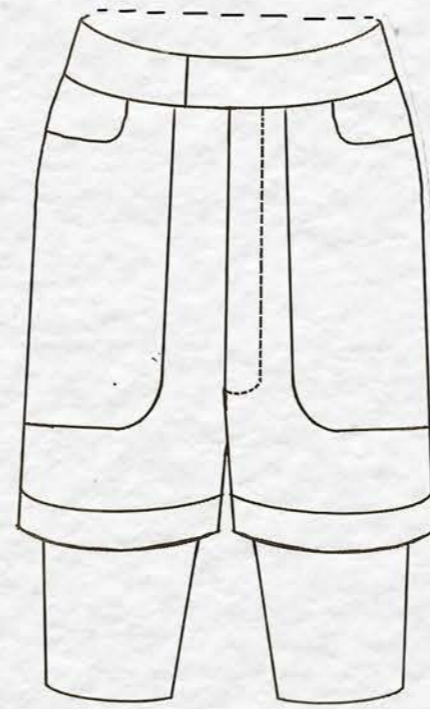
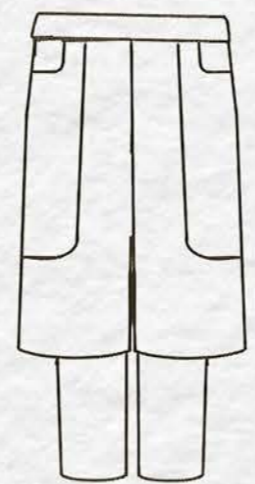
First toile

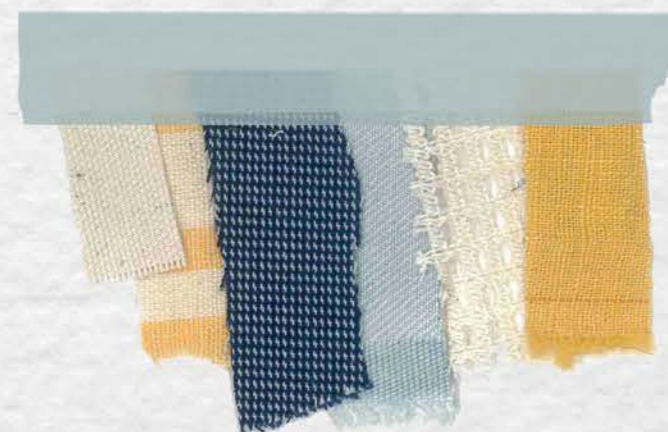
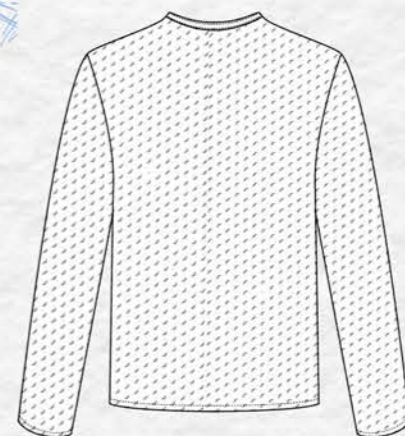






Design development through pattern experimentation



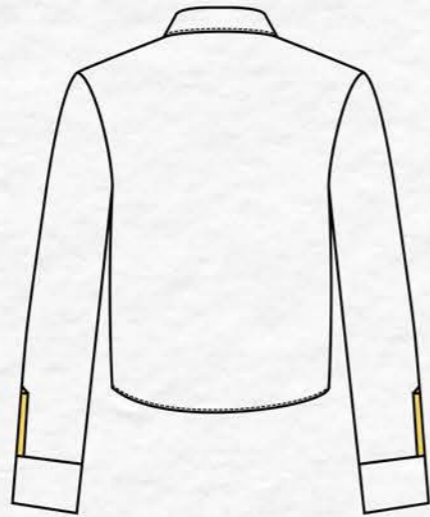




Collection: Pier 24	S/S 2025	Description - 100% Linen white shirt with yellow accents, featuring top stitching in contrast thread, buttonholes in contrast thread, and wooden buttons.
Style name - Voyager Shirt		

Front

Back



Medium fusing on collar, collar stand, button stand and cuffs

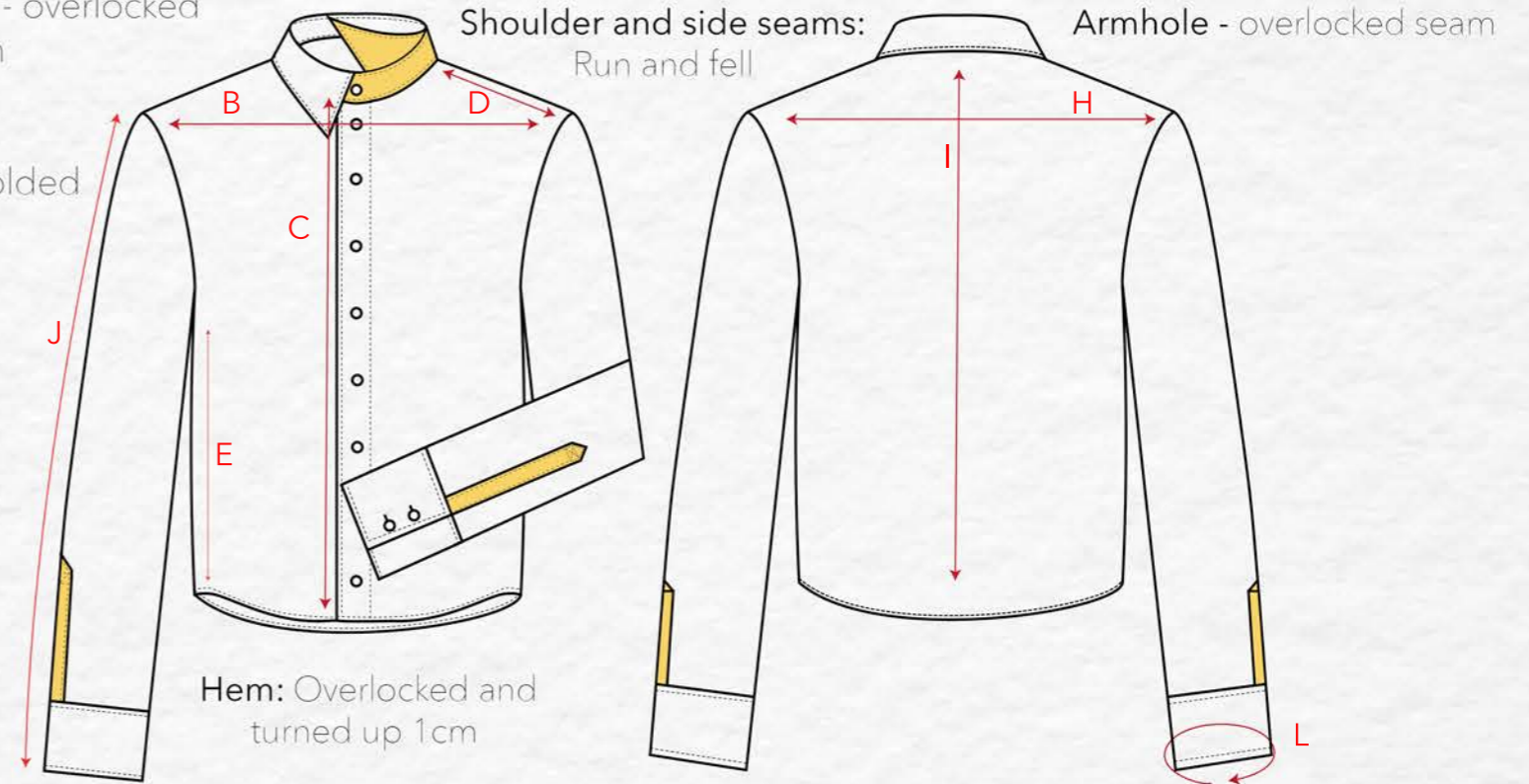
Sleeve side - overlocked closed seam

Shoulder and side seams: Run and fell

Armhole - overlocked seam

Button Stand - Seam folded 2.5 x 2.5cm and top stitched 1/16" along both edges

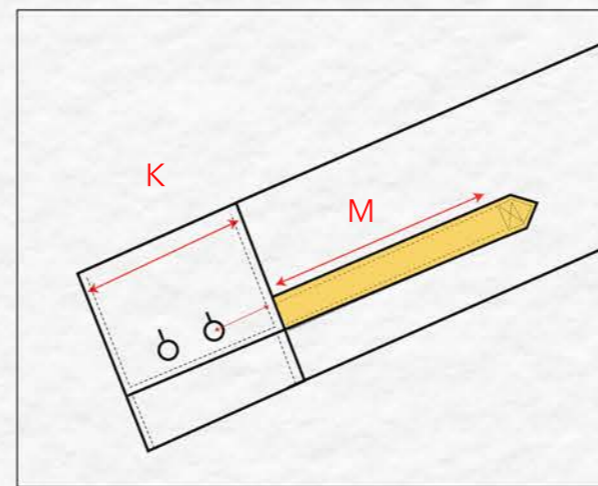
Button Stand- Vertical buttonholes in yellow thread (last buttonhole goes horizontal)



Main Fabrics

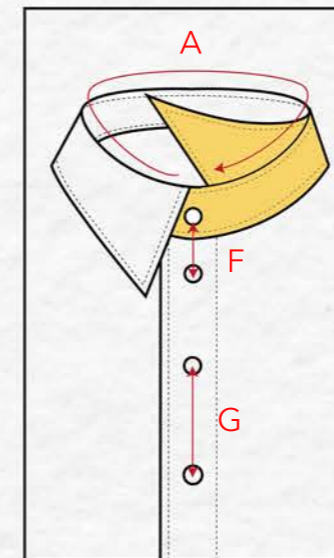


Trim	Location	Amount Needed
	Button stand + cuffs	9 x Button Stand 2 x each cuff



Cuff - top stitched 1/16" along edges

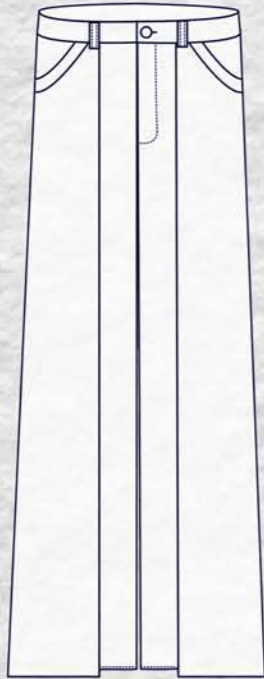
Placket - top stitched 1/16" along edges with a reinforced square and x at the top



Top stitching 1/16" around collar

Horizontal buttonhole at the top in white thread

Reference	Point of Measurement	Measurement (cm)
A	Neck	42.5
B	Across Chest	53
C	Neck to hem	65.5
D	Shoulder seam	24
E	Side seam	37
F	Distance between first buttons	3.5
G	Distance between buttons	5.5
H	Across back	53.5
I	BK- Neck to hem	72
J	Sleeve length	56
K	Cuff length	5.5
L	Cuff Circumference	30
M	Placket length	13.3



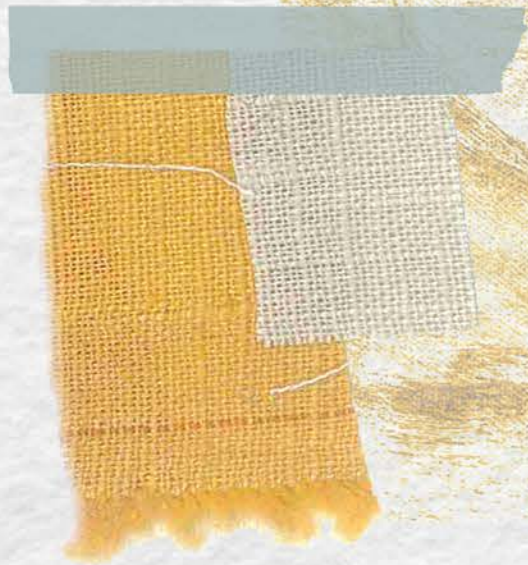
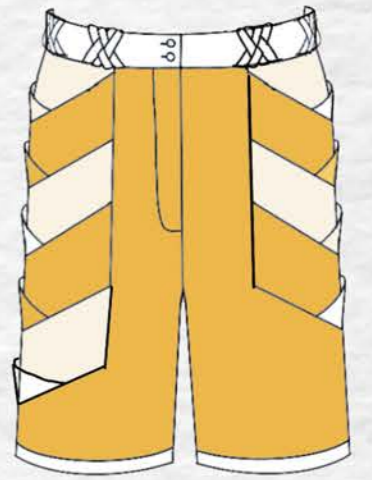
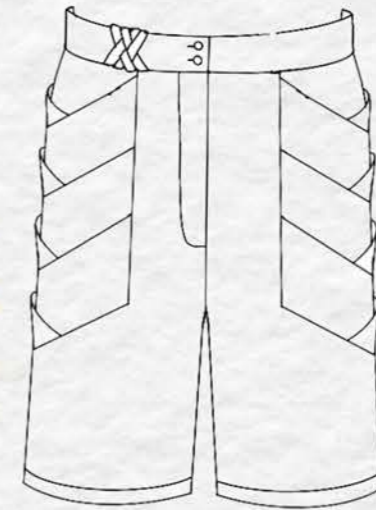
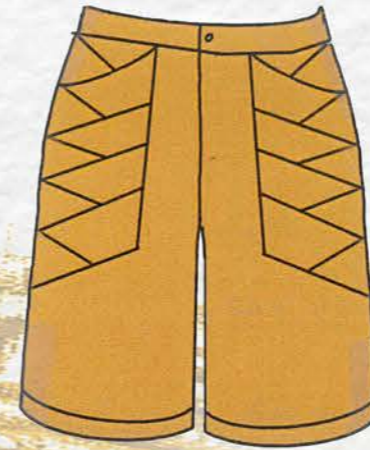


Layering of houses

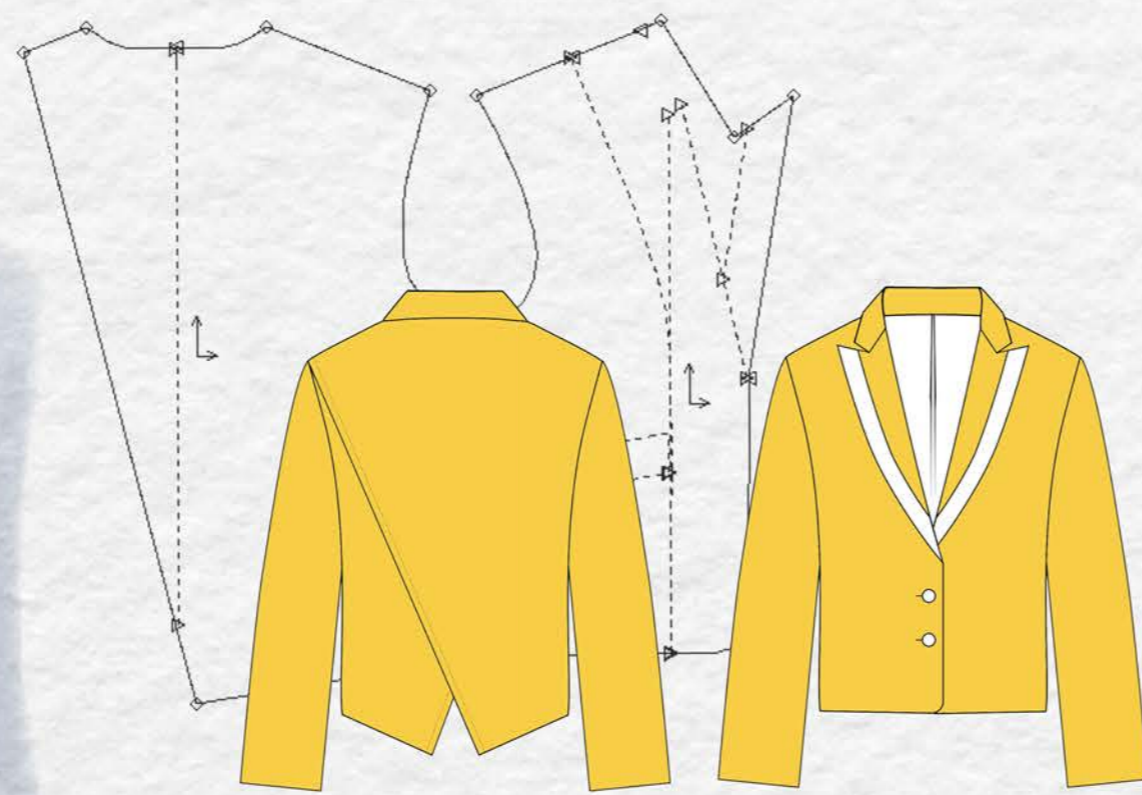
Recurring motif in my travel photography



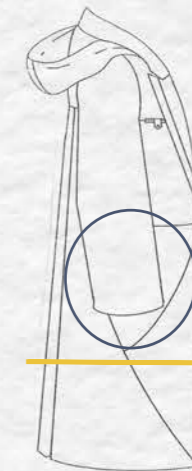
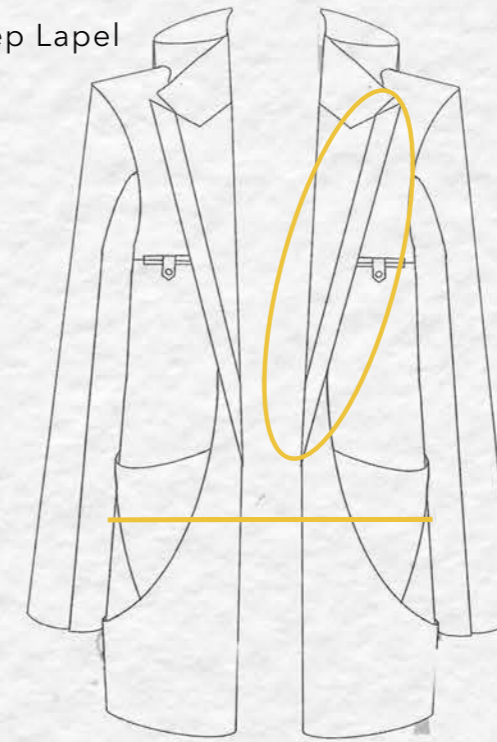
Layering pockets



Redesigning Long Jacket into Relaxed Blazer



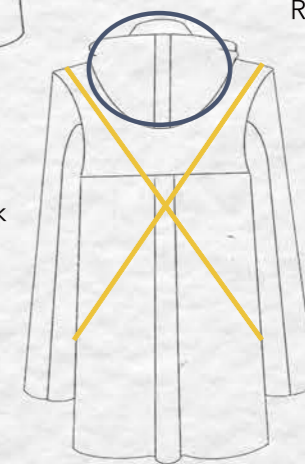
Keep Lapel



Shorten Jacket

Remove hood

Crossing panels from side to back

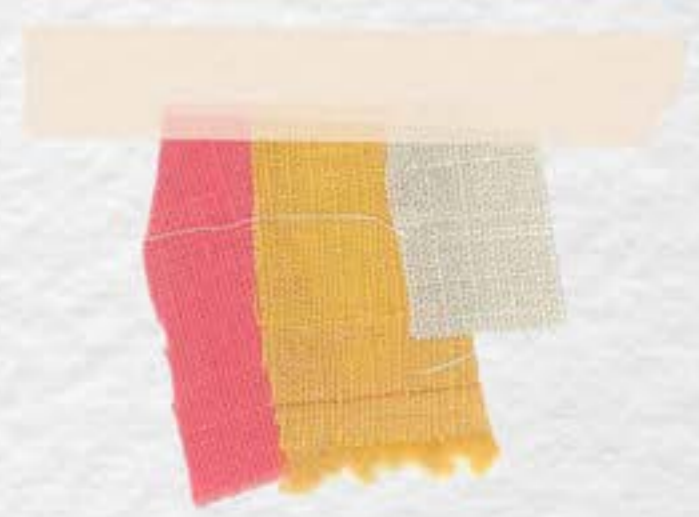


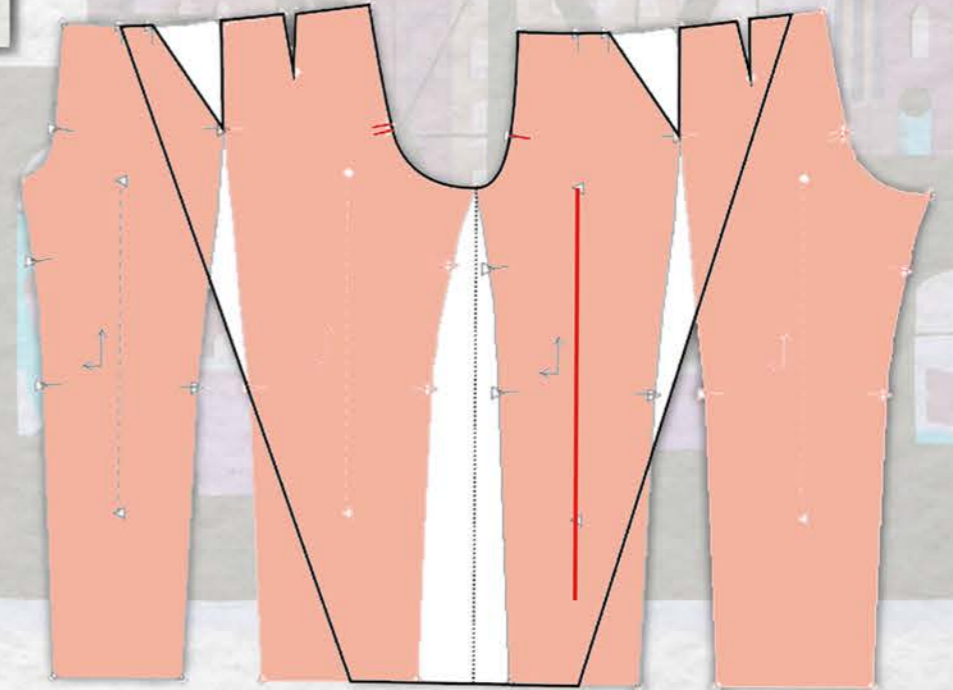
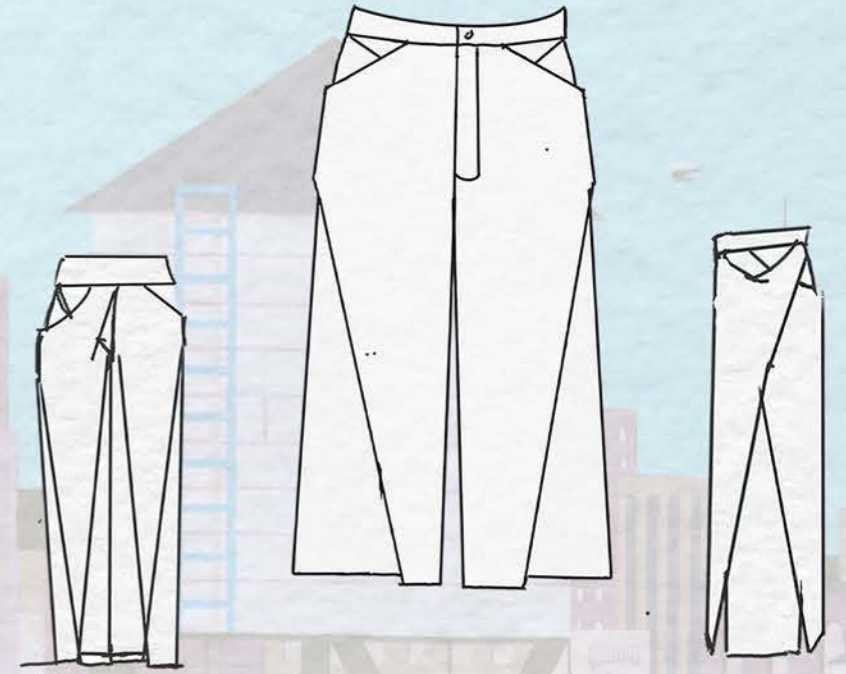
Range planning

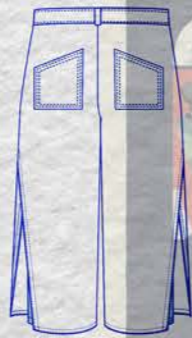
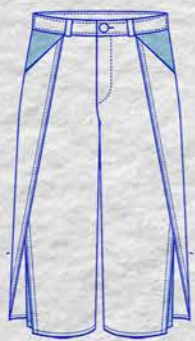
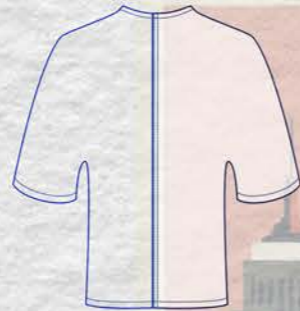


Experimenting with a more fitted silhouette









WARNING: ALTERATION, ADDITION OR MUTILATION OF ENTRIES IS PROHIBITED.
ANY UNOFFICIAL CHANGE WILL RENDER THIS PASSPORT INVALID.

NAME—NOM
SEX—SEXE
F
BIRTHPLACE—LIEU DE NAISSANCE
CALIFORNIA, U.S.A.
ISSUE DATE—DATE DE DELIVRANCE
MAY 28, 1985
BIRTH DATE—DATE DE NAISSANCE
OCT. 21, 1956
EXPIRES ON—EXPIRE LE
MAY 25, 1993
WIFE/HUSBAND—EPOUSE/EPOUX
X X X
MINORS—ENFANTS MINEURS
X X X
NEW APPLICATION JUL 09
Signature: *Carroll*

IMPORTANT: THIS PASSPORT IS NOT VALID UNTIL SIGNED BY THE BEARER.
PERSONS INCLUDED HEREIN MAY NOT USE THIS PASSPORT UNLESS ACCOMPANIED BY THE BEARER.

