



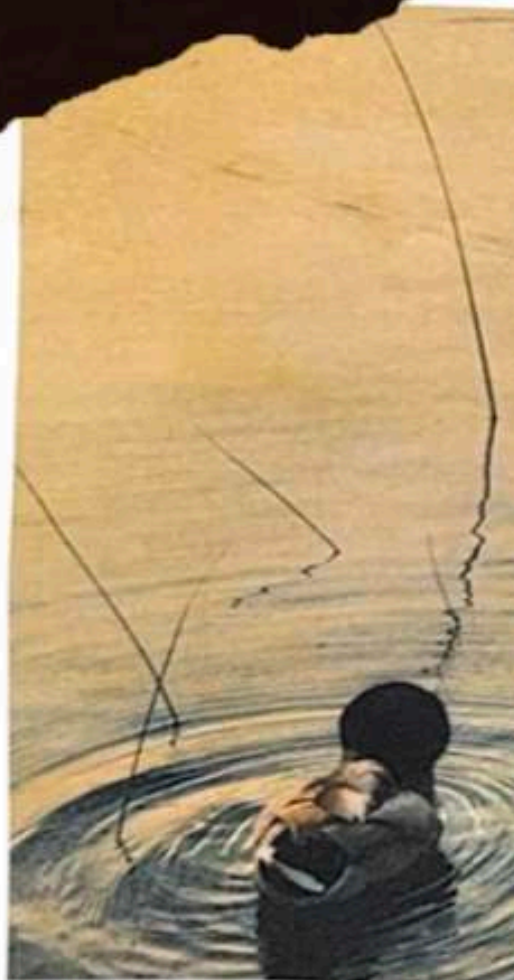
**Portfolio**

# **Painting And Reality**

**2313433 Ziemis Hua**



# Research



The Origins of Pictorial Photography

Pictorial photography, also known as pictorialism, was a movement in photography that considered a form of art. It was characterized by its aesthetics inspired by painting, often using soft focus, high contrast, and symbolic imagery to convey a message or emotion. The movement was particularly prominent in the late 19th and early 20th centuries, with photographers like Alfred Stieglitz and George Eastman being key figures. The image above is a reproduction of a painting, likely a watercolor or oil, depicting a person in a small boat on a body of water. The person is seen from behind, looking out over a vast, open landscape. The style is soft and painterly, with visible brushstrokes and a muted color palette, which is characteristic of the pictorialist movement.



Pictorial photography, also known as Pictorialism, emerged in the late 19th century as a response to the growing debate over whether photography could be considered a form of art. Early photographers, seeking to elevate photography beyond its mechanical and documentary role, began to adopt techniques and aesthetics inspired by painting. They used soft focus, special printing methods, and carefully composed scenes to create images that expressed mood, symbolism, and personal vision.

Pictorial photography, also known as Pictorialism, emerged in the late 19th century as a response to the growing debate over whether photography could be considered a form of art. Early photographers, seeking to elevate photography beyond its mechanical and documentary role, began to adopt techniques and aesthetics inspired by painting. They used soft focus, special printing methods, and carefully composed scenes to create images that expressed mood, symbolism, and personal vision.



A collage of various images related to cherry blossoms. It includes a photograph of white blossoms on dark branches, a painting of blossoms in shades of yellow and brown, a piece of paper with colorful dots, a photograph of a tree trunk, and a photograph of a person's face. The collage is set against a white background with scattered yellow and pink petals.



## Research



## Brand research



**Jean-Paul Gaultier is a renowned French fashion designer known for his bold, unconventional, and avant-garde designs. Born on April 24, 1952, in Arcueil, France, Gaultier did not receive formal training in fashion but started his career by sending his sketches to famous designers. He was eventually hired by Pierre Cardin in the 1970s.**

**Gaultier became famous in the 1980s and 1990s for challenging traditional fashion norms. He is best known for popularizing the “man skirt,” cone bras (famously worn by Madonna during her 1990 Blond Ambition Tour)**

**Aside from fashion, Gaultier has also worked as a costume designer for films and TV and hosted the French TV show Eurotrash. He retired from runway fashion in 2020 but remains an influential figure in the fashion world, known as the "enfant terrible" of French fashion for his rebellious and innovative spirit.**



# Brand research & Brand analysis

The initial development of the brand ;

In his early career, Jean-Paul Gaultier’s style was characterized by a rebellious, irreverent approach to fashion that challenged traditional norms. Drawing inspiration from street culture, punk, and fetish wear, he infused high fashion with elements considered unconventional or provocative at the time. His early collections in the 1980s often featured gender-fluid silhouettes, corsetry, sailor stripes, and playful reinterpretations of traditional garments. Gaultier blurred the lines between masculinity and femininity, most famously introducing skirts for men and using corsets as outerwear. This bold, avant-garde style quickly set him apart in the fashion industry and earned him the nickname "enfant terrible" of French fashion.



## Brand development trend

Since Jean-Paul Gaultier's retirement in 2020, the brand has adopted a guest designer model for its haute couture collections. This approach has brought fresh perspectives while honouring Gaultier's legacy. Designers such as Chitose Abe, Glenn Martens, Olivier Rousteing, Haider Ackermann, Julien Dossena, Simone Rocha, and Ludovic de Saint Sernin have each contributed their unique interpretations, blending their personal styles with the house's iconic elements like the corset and sailor stripes .  
FashionUnited



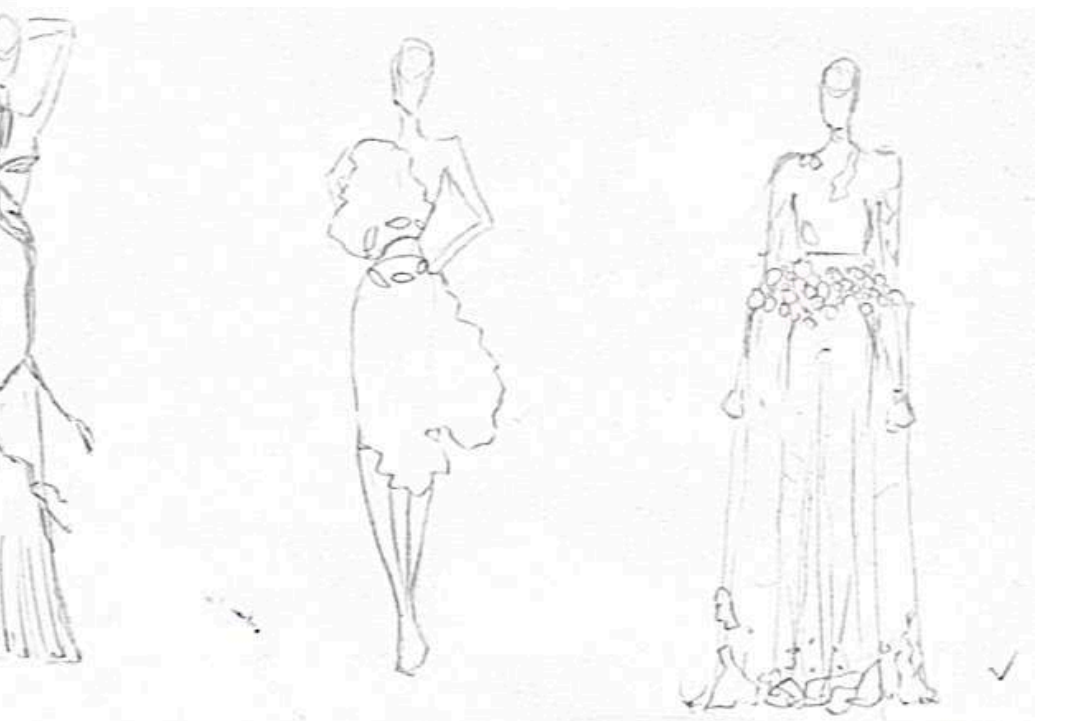
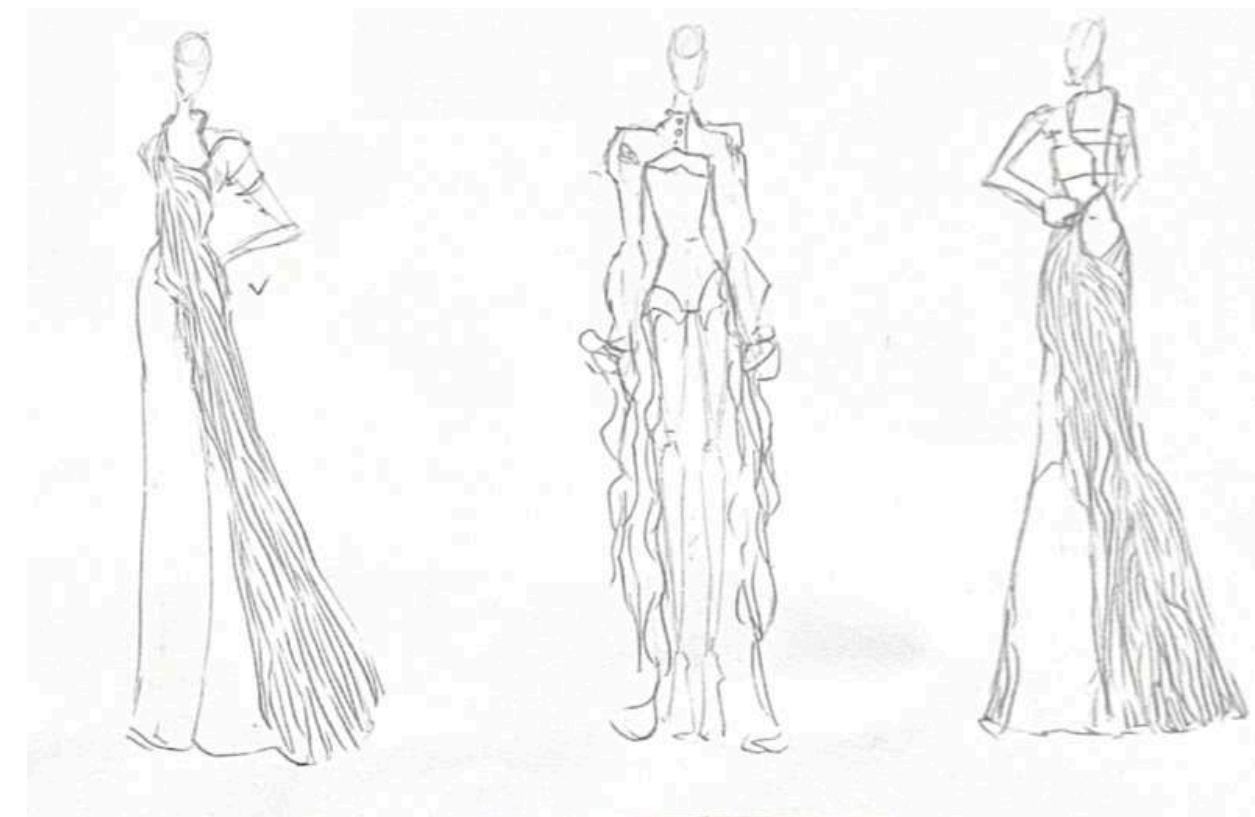
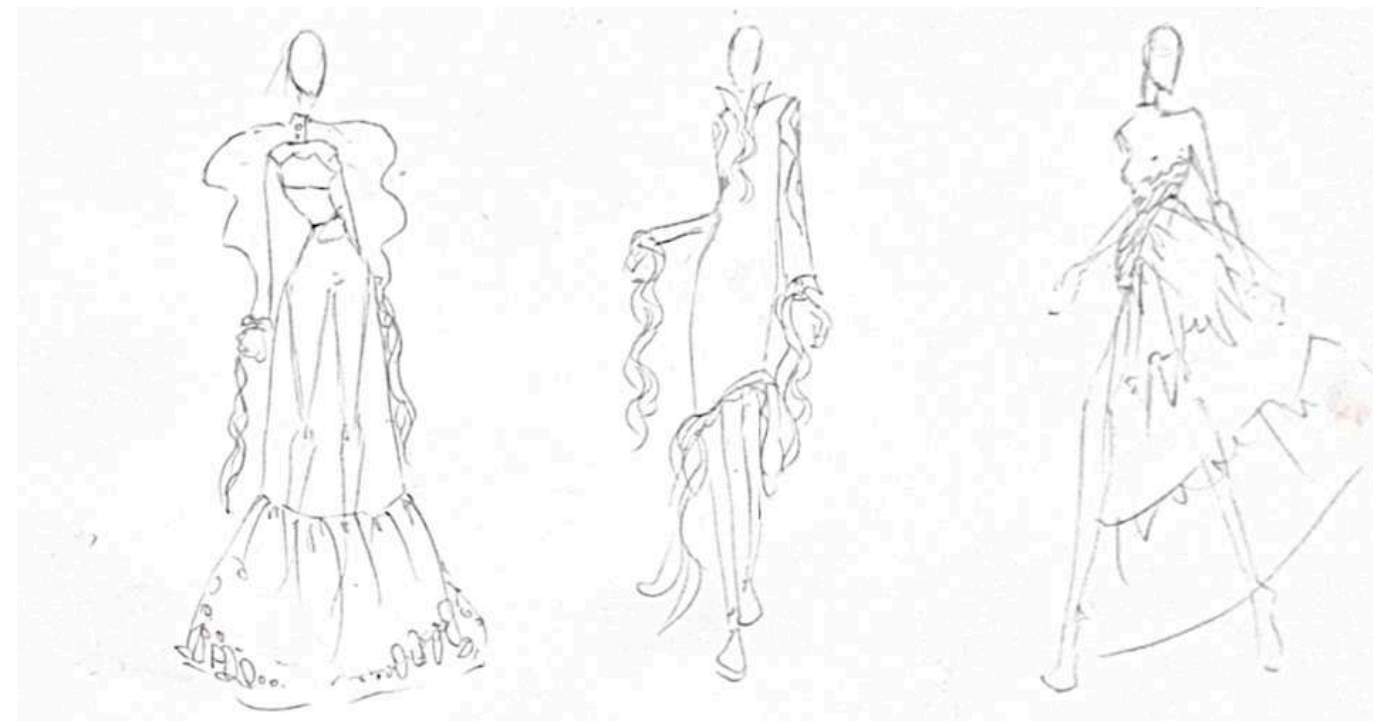
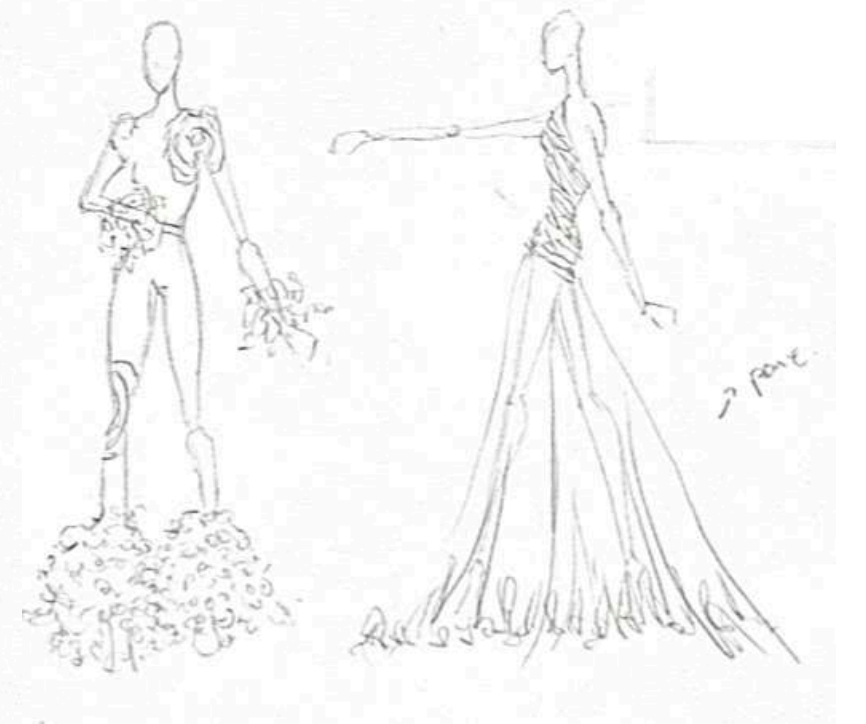
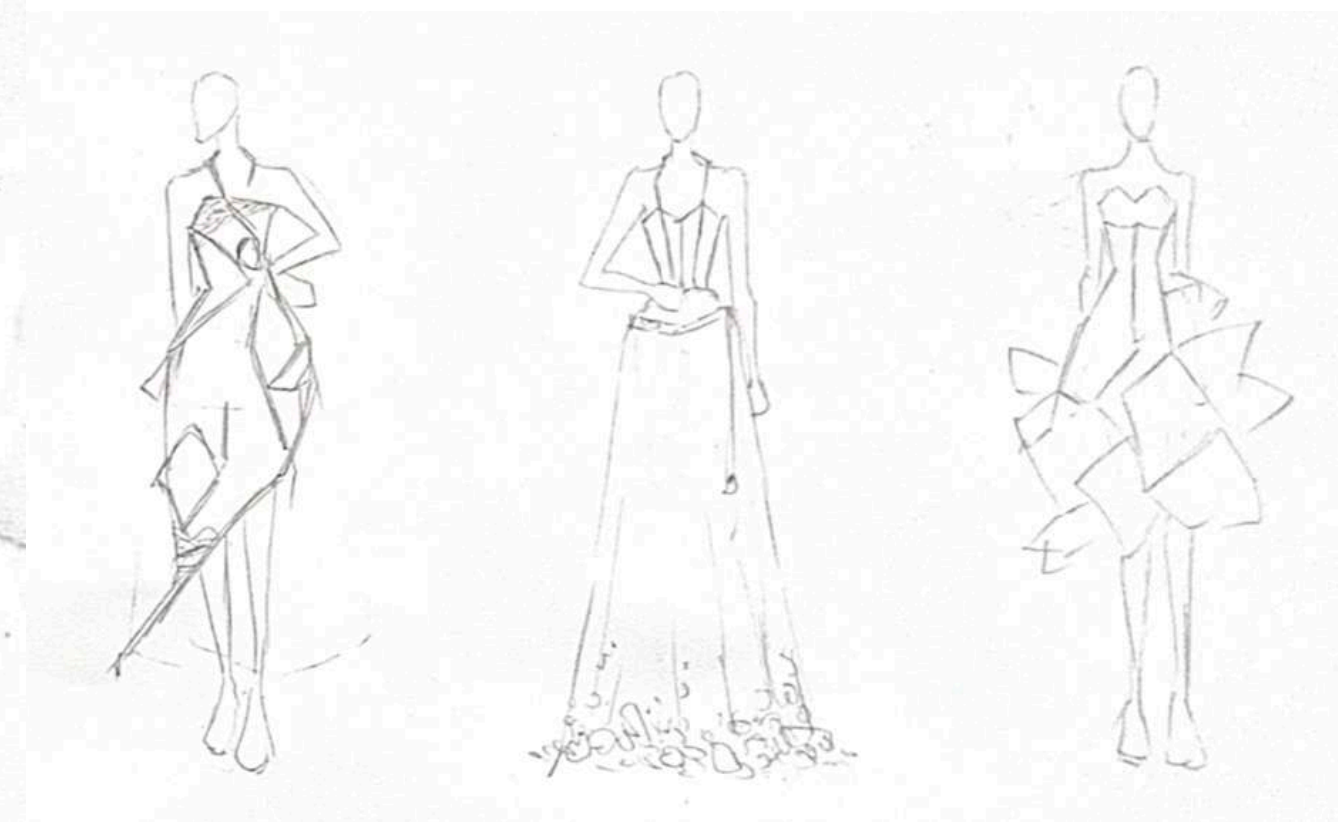
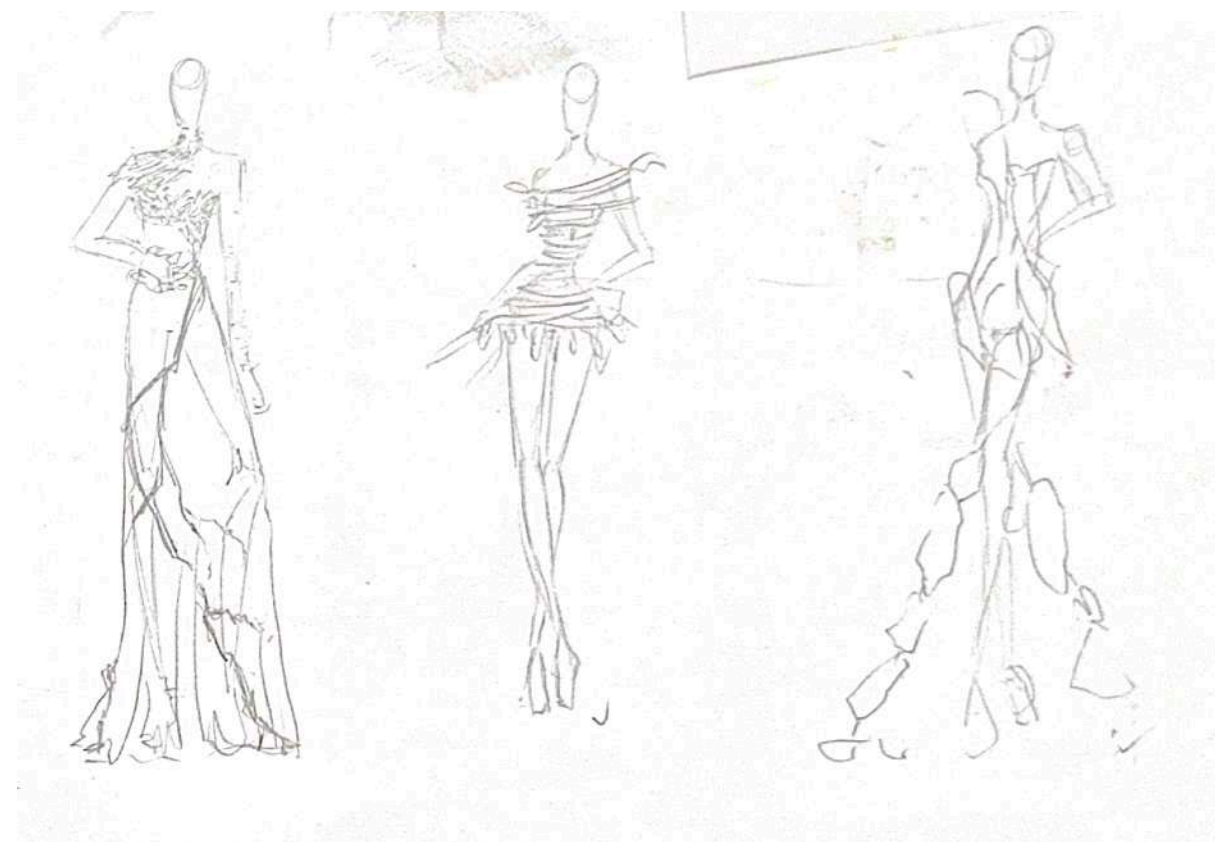


**Colour and fabric**





# Sketch



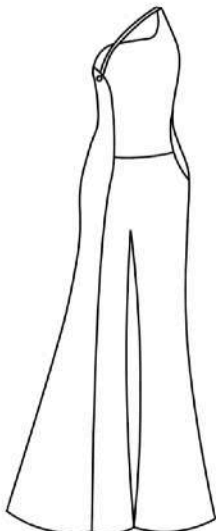
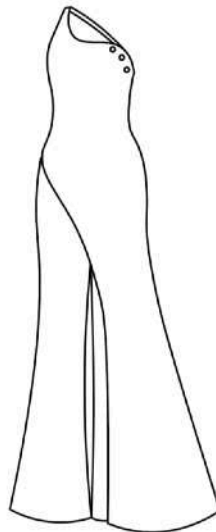


## Final lineup




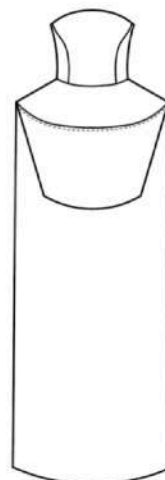




Season	SS26		Date		5/19/25				
Brand	ZIMEI HUA		Designer		ELSA HUA				
Style No	#JMSS2663	ITEM	COAT	Style Name	TRIPLE LAPEL SLEEVELESS COAT				
				Factory	Unit Price				
<div></div>				SIZE SPEC					
				S	M	L	XL		
				Center Back Length	165cm	167.5cm	170cm	171.5cm	
				Shoulder	-	-	-	-	
				Chest	89cm	92cm	94.5cm	97cm	
				Waist	70cm	73cm	75.5cm	77cm	
				Bottom	204cm	252cm	280cm	288cm	
				Sleeve Length	-	-	-	-	
				Armhole	-	-	-	-	
				Muscle	-	-	-	-	
				Cuff Opening	-	-	-	-	
				Neck Width	-	-	-	-	
				Front Neck Drop	-	-	-	-	
				Back Neck Drop	-	-	-	-	
				Neck Rib Width	-	-	-	-	
				CF Length	145cm	147.5cm	149cm	151.5cm	
				2nd Layer Length	146cm	148.5cm	150cm	152.5cm	
				3rd Layer Length	-	-	-	-	
				COLOR	SIZE				QTY
					XS	S	M	L	XL
Camel	3	3	3	2	11				
Black	3	3	3	2	11				
					0				
					0				
TOTAL	0	6	6	6	4	22			
SWATCH				MATERIALS					
NAME		COLOR	SUPPLIER	SIZE	QUANTITY	UNIT PRICE	TOTAL	TOTAL MATERIALS	
patent leather fabric		BLACK	Minix(Taobao/China)	176cm	3M	£ 4.50	£ 13.50	£ 37.00	
ACETATE LINING		Yellow	Hanoi(Taobao/China)	230cm	2.5M	£ 4.00	£ 12.00		
Velvet Stripe Fabric		light brown	Nilimaao(Taobao)	-	2.5M	£ 2.80	£ 8.40		
invisible zip		BLACK	Yiyisha (Taobao)	-		£ 3.1	£ 3.10		
Total				-		£.			
				-					

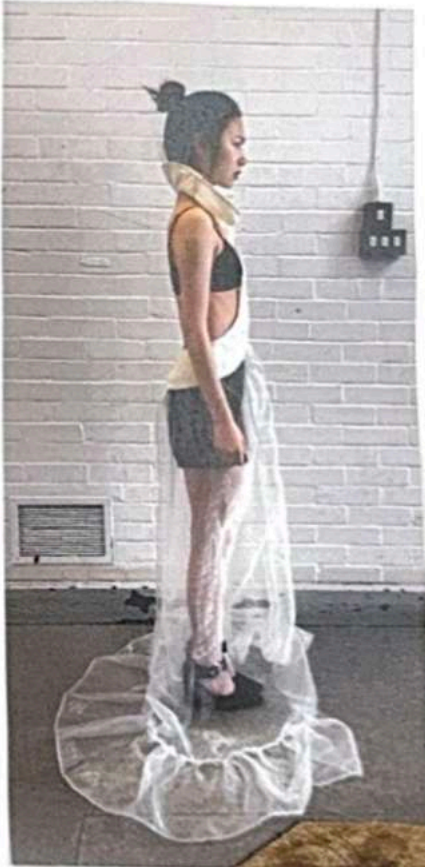
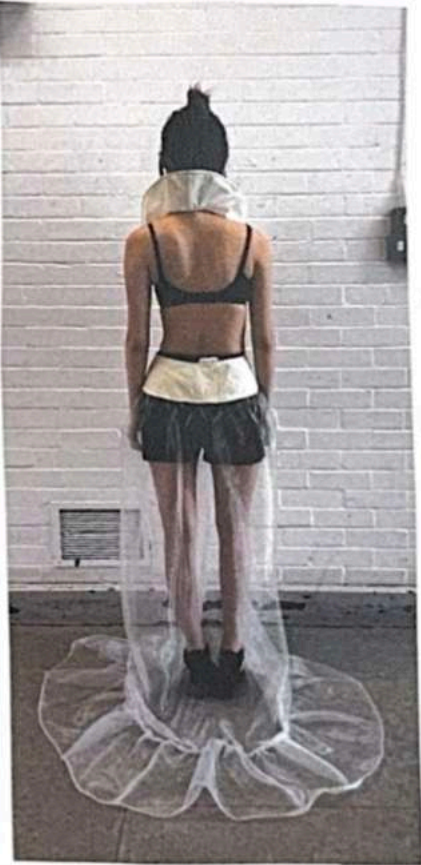




Season		SS26		Date		5/19/25								
Brand		ZIMEI HUA		Designer		ELSA HUA								
Style No		#JMS52603	ITEM	COAT	Style Name	TRIPLE LAPEL SLEEVELESS COAT								
				Factory		Unit Price								
<div></div>							SIZE SPEC							
								S	M	L	XL			
							Ceater Back Length	157cm	160.5cm	162cm	165.5cm			
							Shoulder	-	-	-	-			
							Chest	104cm	108cm	112cm	116cm			
							Waist	70cm	73cm	75.5cm	78cm			
							Bottom	244cm	252cm	260cm	268cm			
							Sleeve Length	-	-	-	-			
							Armhole	-	-	-	-			
							Muscle	-	-	-	-			
							Cuff Opening	-	-	-	-			
							Neck Width	-	-	-	-			
							Front Neck Drop	-	-	-	-			
							Back Neck Drop	-	-	-	-			
							Neck Rib Width	-	-	-	-			
							CF Length	145cm	147.5cm	149cm	151.5cm			
							2nd Layer Length	146cm	148.5cm	150cm	152.5cm			
							3rd Layer Length	-	-	-	-			
							COLOR				SIZE	Q'TY		
								XS	S	M	L		XL	
							Camel		3	3	3	2	11	
							Black		3	3	3	2	11	
							Green		3	3	3	2	11	
													0	
													0	
							TOTAL	0	9	9	9	6	33	
							SWATCH			MATERIALS				
								NAME	COLOR	SUPPLIER	SIZE	QUANTITY	UNIT PRICE	TOTAL
	BONDED WOOL	CAMEL	Youni(Taoobao/China)	148CM	15M	£ 3.00	£ 9.00	£ 82.80						
	ACETATE LINING	Green	Hanoi(Taoobao/China)	148CM	2.5M	£ 4.00	£ 12.00							
	Velvet Stripe Fabric	Green	Nili(mao(Taoobao)	-	2	£ 2.85	£ 10.60							
	Ougengsha	BLACK	libjia(Taoobao)	148CM	1	£ 3.40	£ 16.20							
	FUSING	BLACK	UCA FABRIC STORE	-	0.5	5	35							
				-	0.5									







Season		SS26				Date		5/19/25						
Brand		ZIMEI HUA				Designer		ELSA HUA						
Style No	#Zimeiss703	ITEM	COAT	Style Name	TRIPLE LAPEL SLEEVELESS COAT		SIZE SPEC							
				Factory		Unit Price								
								S	M	L	XL			
							Center Back Length	170cm	173cm	175cm	176.5cm			
							Shoulder	-	-	-	-			
							Chest	89cm	92cm	94.5cm	97cm			
							Waist	70cm	73cm	75.5cm	77cm			
							Bottom	204cm	252cm	260cm	268cm			
							Sleeve Length	-	-	-	-			
							Armhole	-	-	-	-			
							Muscle	-	-	-	-			
							Cuff Opening	-	-	-	-			
							Neck Width	-	-	-	-			
							Front Neck Drop	-	-	-	-			
							Back Neck Drop	-	-	-	-			
							Neck Rib Width	-	-	-	-			
							CF Length	145cm	147.5cm	149cm	151.5cm			
							2nd Layer Length	146cm	148.5cm	150cm	152.5cm			
							3rd Layer Length	-	-	-	-			
							COLOR		SIZE				QTY	
								XS	S	M	L	XL		
							Camel		3	3	3	2	11	
Green		3	3	3	2	11								
						0								
						0								
						0								
TOTAL	0	6	6	6	4	22								
SWATCH			MATERIALS											
			NAME	COLOR	SUPPLIER	SIZE	QUANTITY	UNIT PRICE	TOTAL	TOTAL MATERIALS				
			Elastic fabric	Brown	Xilinx(Taobao/China)	160	2M	£ 8.50	£ 17.00	£ 48.30				
			Ougengsha	Green	Hanxiao(Taobao/)	560	6M	£ 3.20	£ 19.20					
			Velvet Stripe Fabric	Yellow	Nilimao(Taobao)	-	2M	£ 2.80	£ 5.60					
			Wire	-	Tiesiqijian(Taobao)	-		£ 6.5	£ 6.50					
			Total			-		£.						
						-								











