

The City of Sound

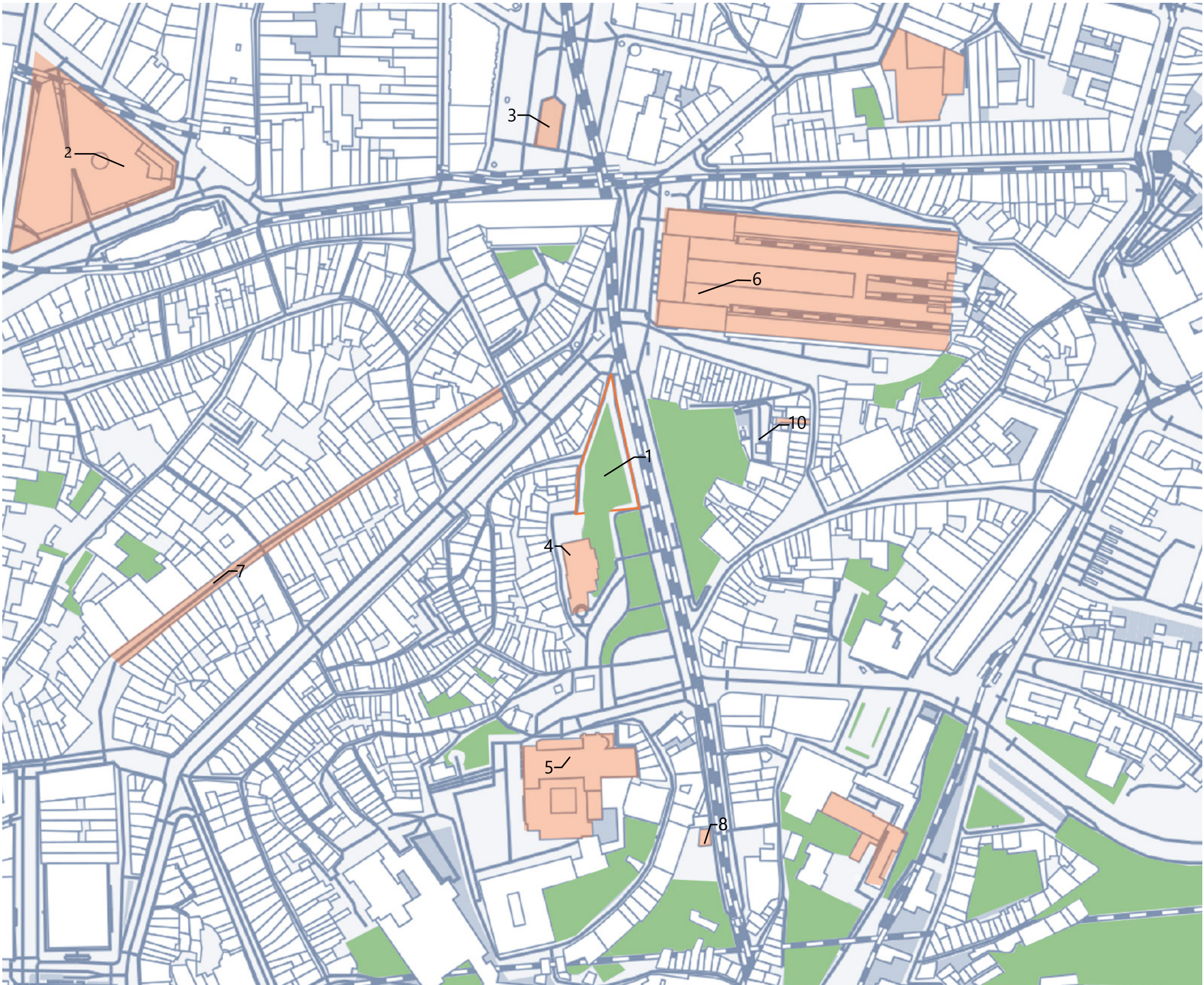




As well as many other Music halls, Porto is mainly known for the Casa da Musica. This site performs multiple types of music performances ranging from classical orchestras to electric DJ styles.

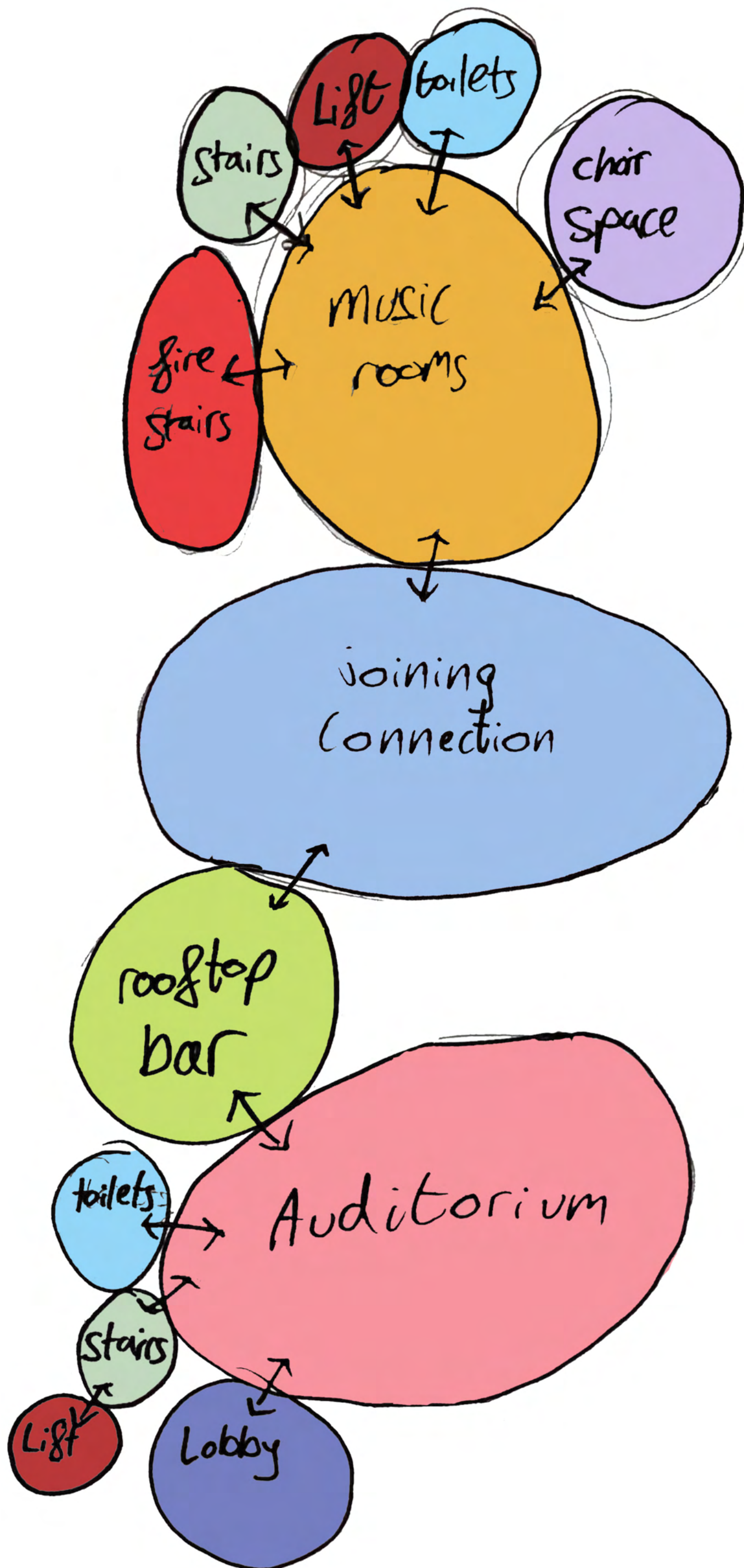
Through out our trip to Porto there was a large amount of street performers that would play music whilst you sat down at restaurants or cafés. They also were scatted along the water from underneath the Luis I bridge.

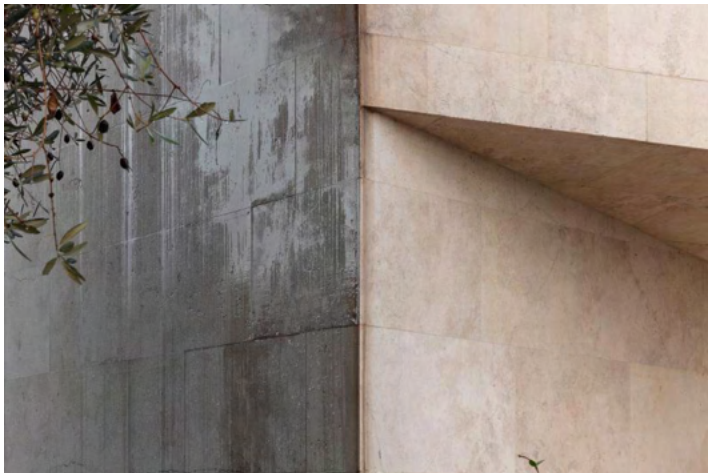
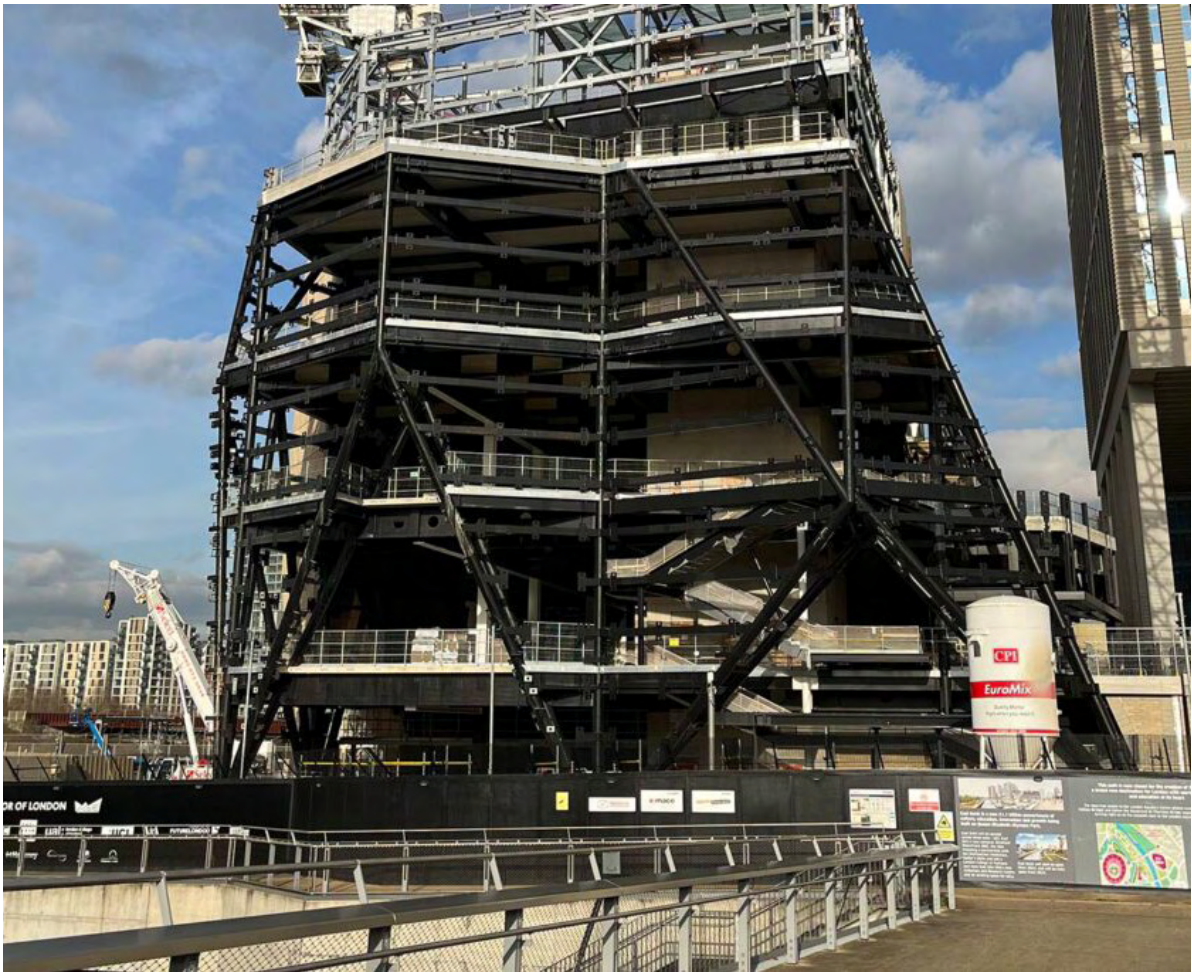
Site Anylsis
Areas of Music



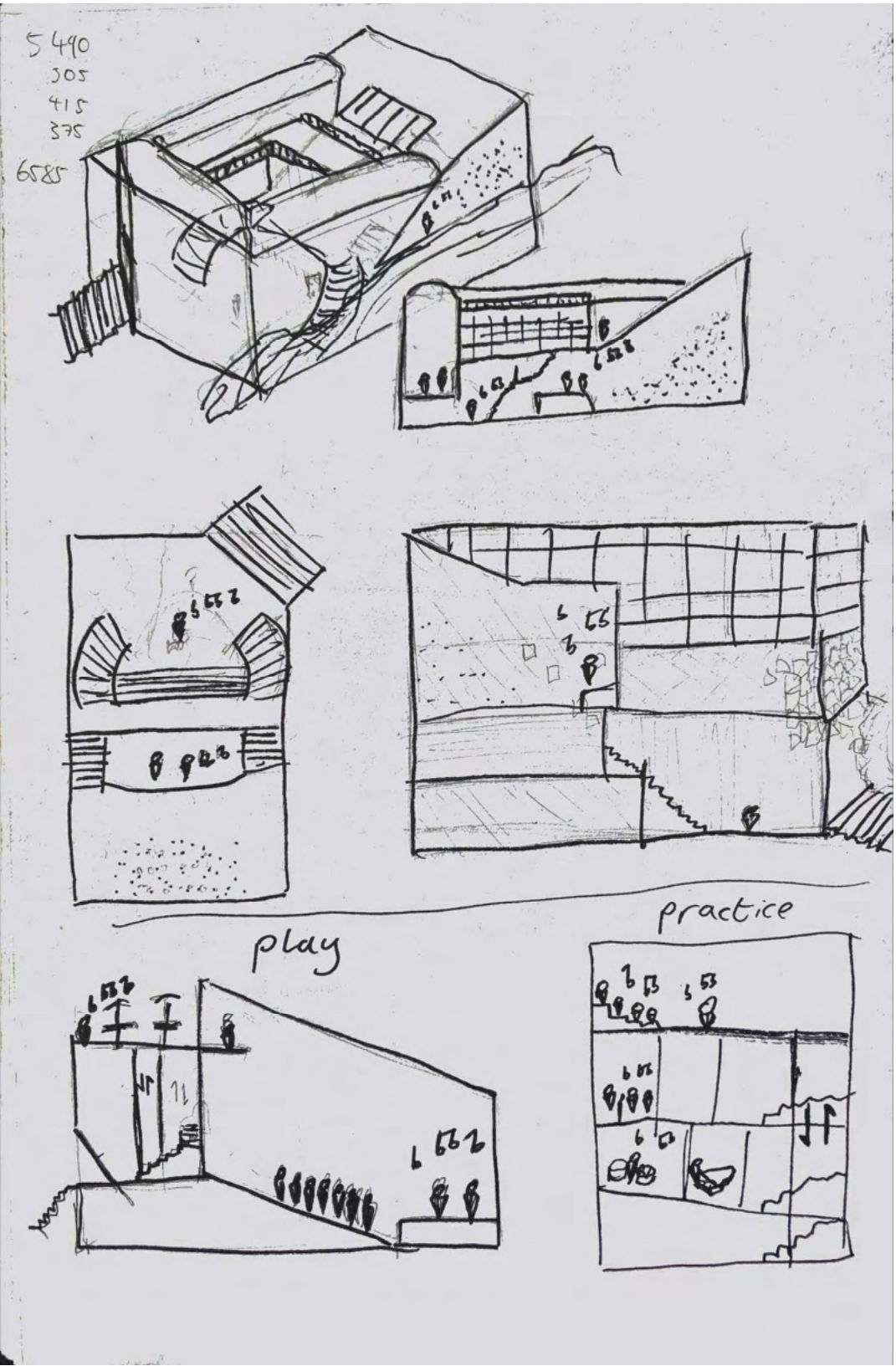
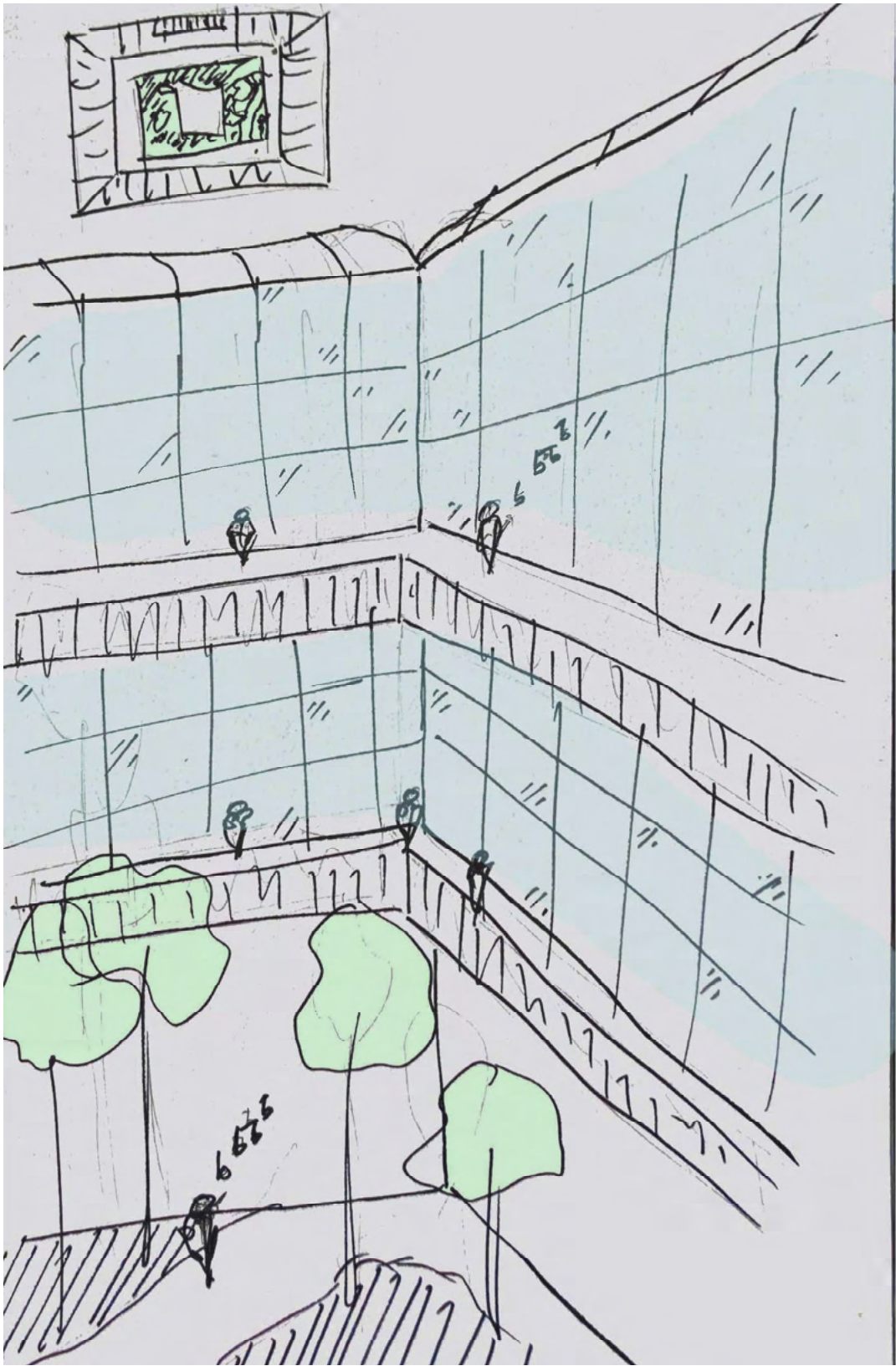
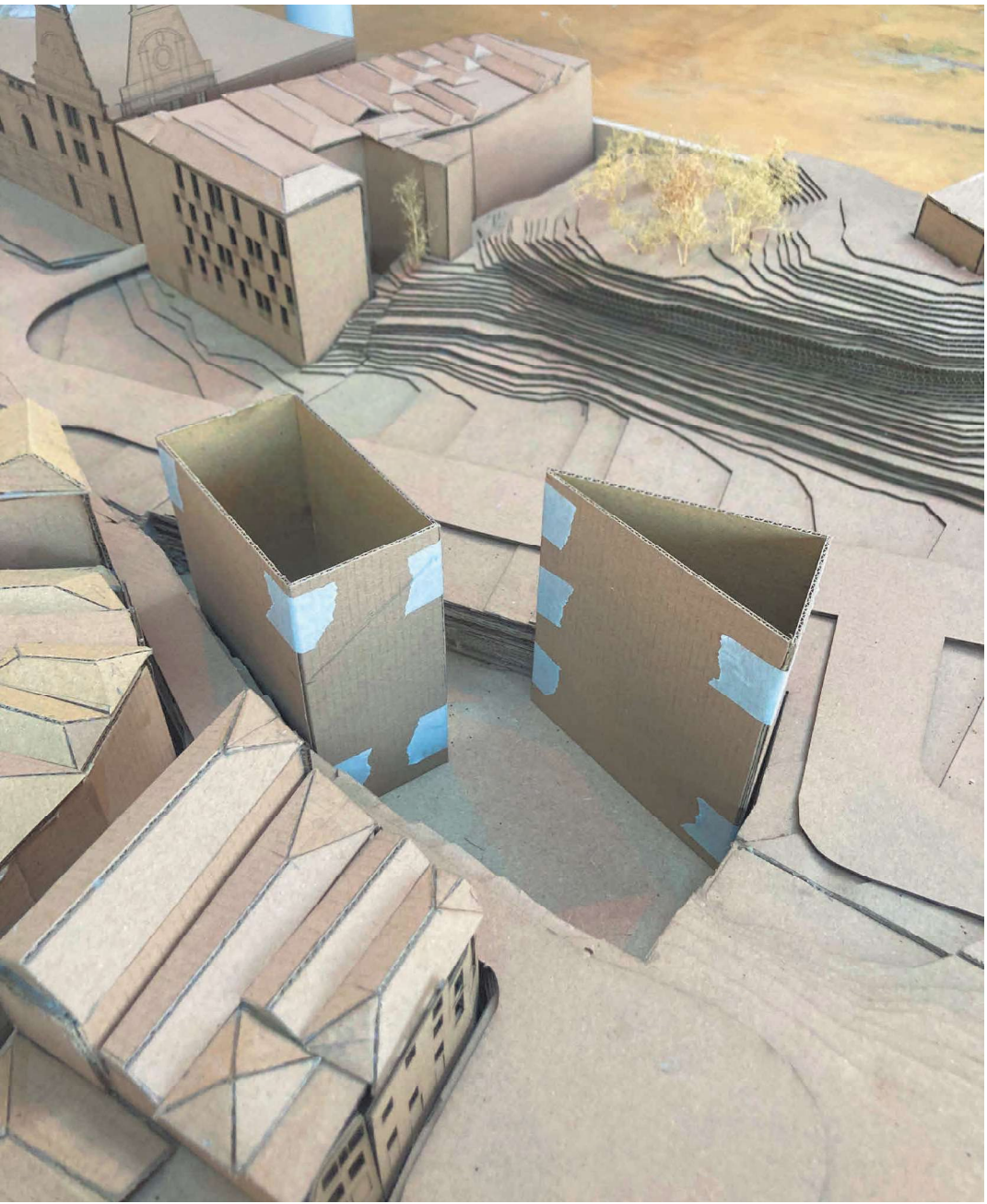
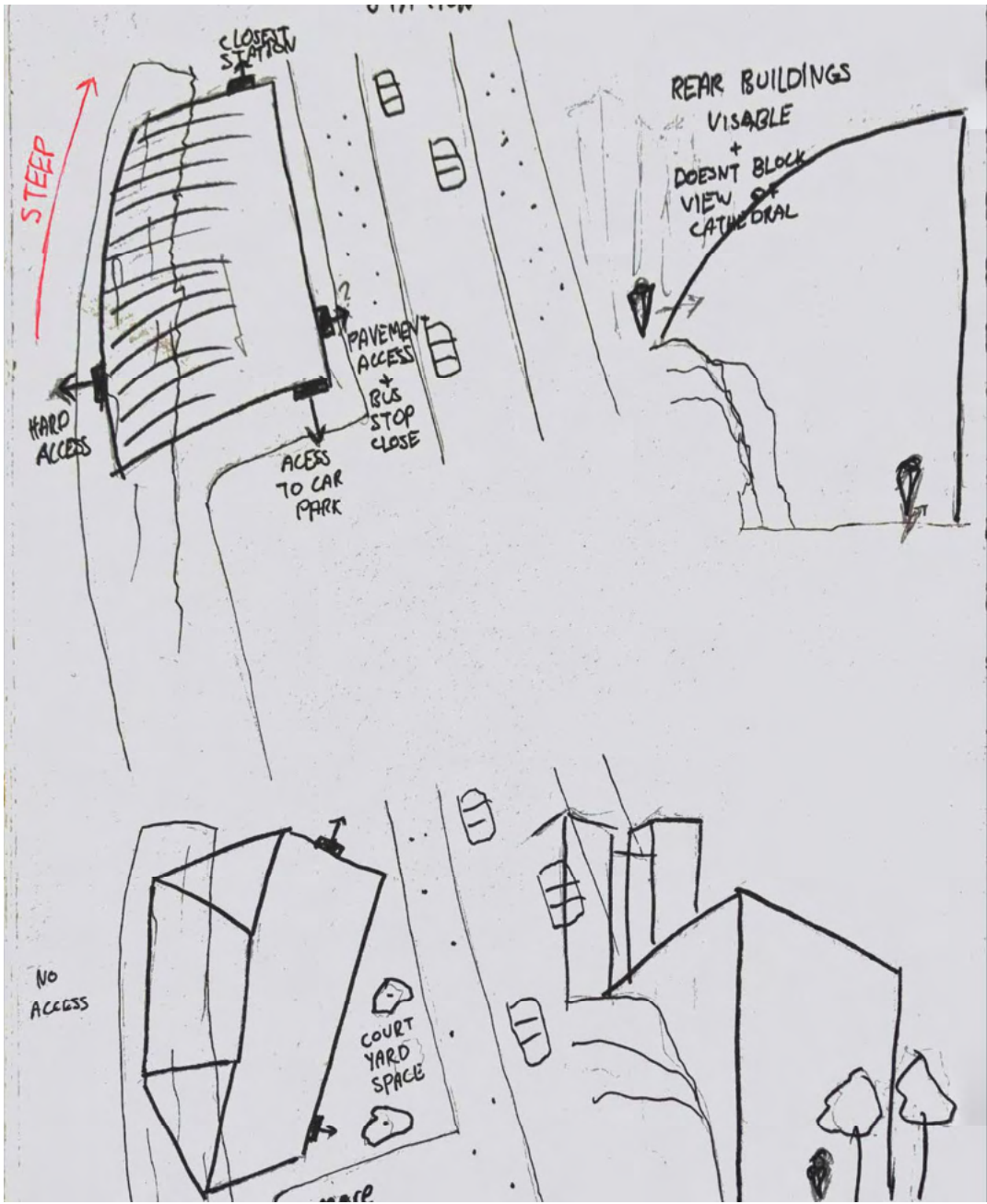
1. Site
In between Sao Bento Station and Canterbury Cathedral, our site is located on a green plot of land with a large gradient and small rock cliff
2. Parca de Lisboa
A space that was designed to open back up a once derelict site and make it a usable green space for the public
3. Pedro IV Monument
A monument for Pedro IV who ruled over Portugal for a brief period but greatly improved it in his short reign
4. Mercado de S. Sebastião
A market that contained a place for farmers to sell their goods in the centre of Porto. However, it is now scheduled for demolition
5. Sé do Porto
Porto is well known for this cathedral due to it being one of the cities oldest monuments
6. Sao Bento Station
Sao Bento is a station that has beautiful murals depicting moments in Portugal's history
7. R. das Flores
A high street next to our site that contains a multitude of shops and places to eat
8. Frederico Draw Painting
An art piece by Frederico Draw welcoming people into Porto

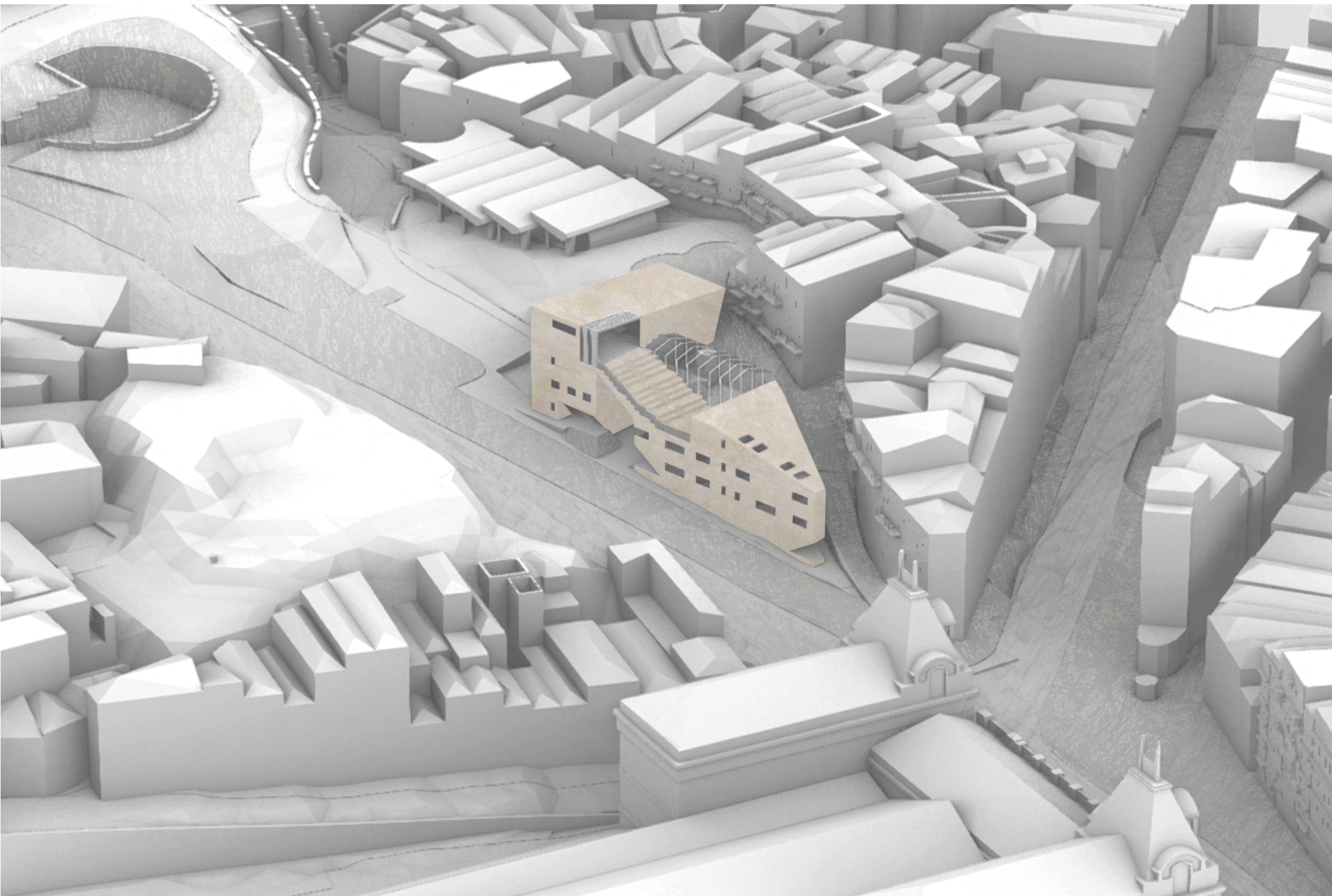




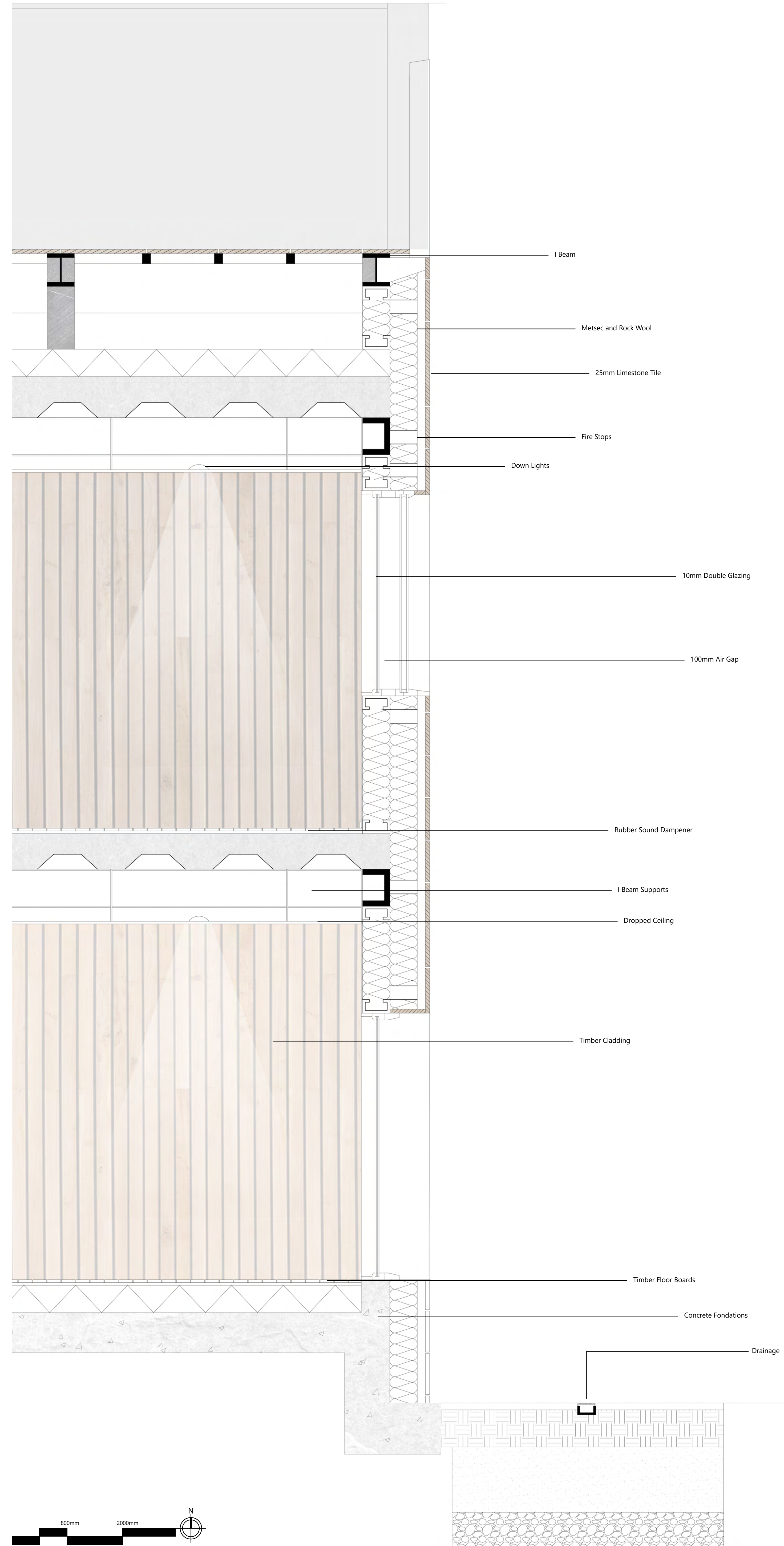


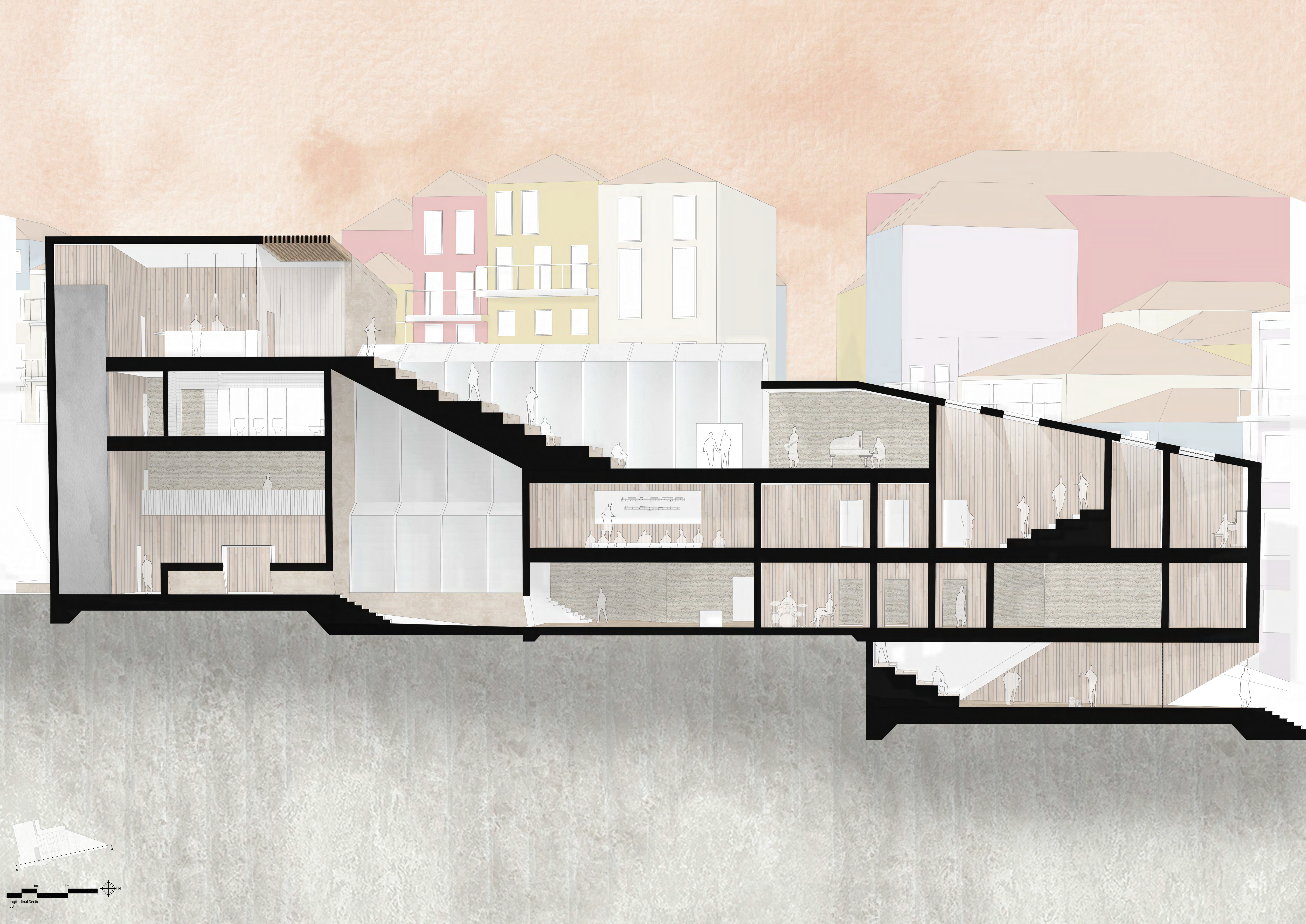
Precedents



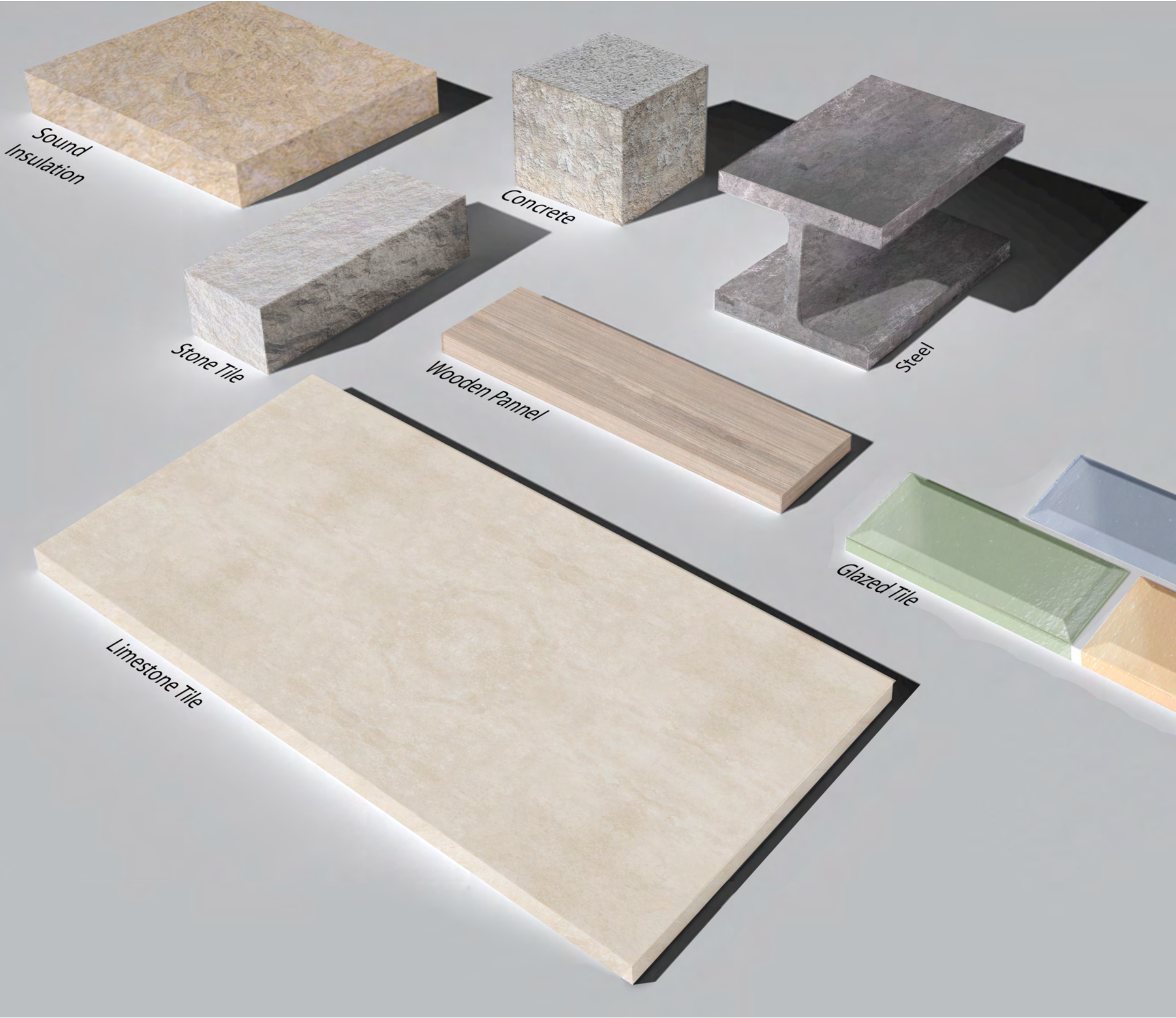
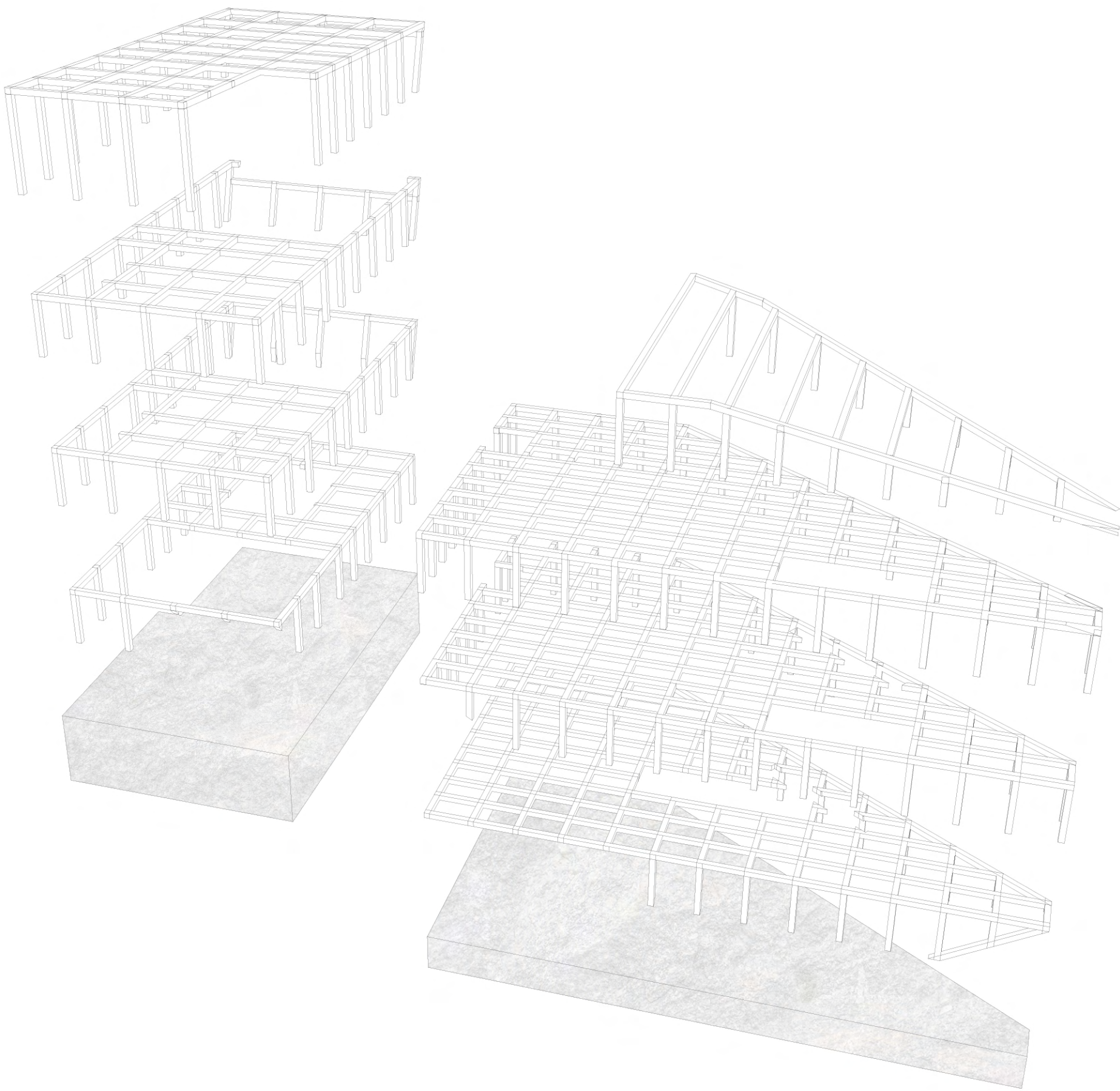


Contextual Ariel View









Embodied Carbon

Structure

Steel

- Volume 98.1431695 m³
- Embodied carbon of Steel 17276 kg/m³
-Total embodied carbon of steel structure = 1,695,564 kgCO2

Glulam

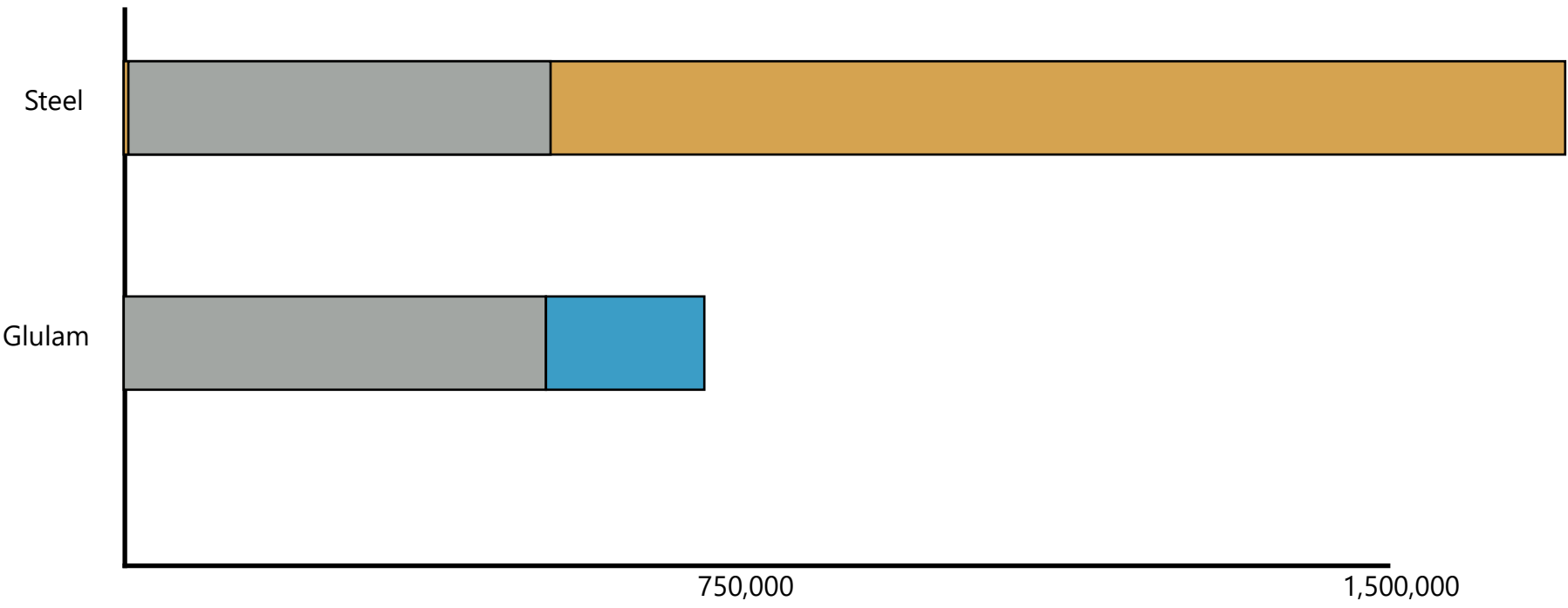
- Volume 196.286339 m³
- Embodied Carbon of concrete 256 kg/m³
-Total embodied carbon of steel structure = 50,249 kgCO2

Foundations

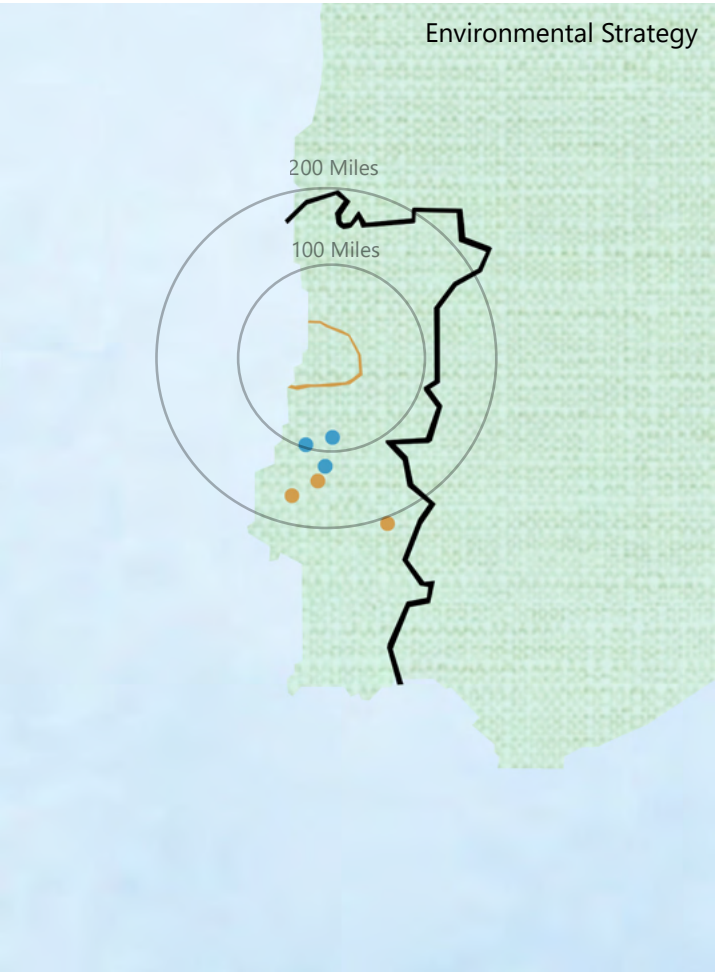
Concrete

- Volume 1069.76714m³
- Embodied Carbon of concrete 495 kg/m³
-Total embodied carbon of steel structure = 529,640 kgCO2

Strategies

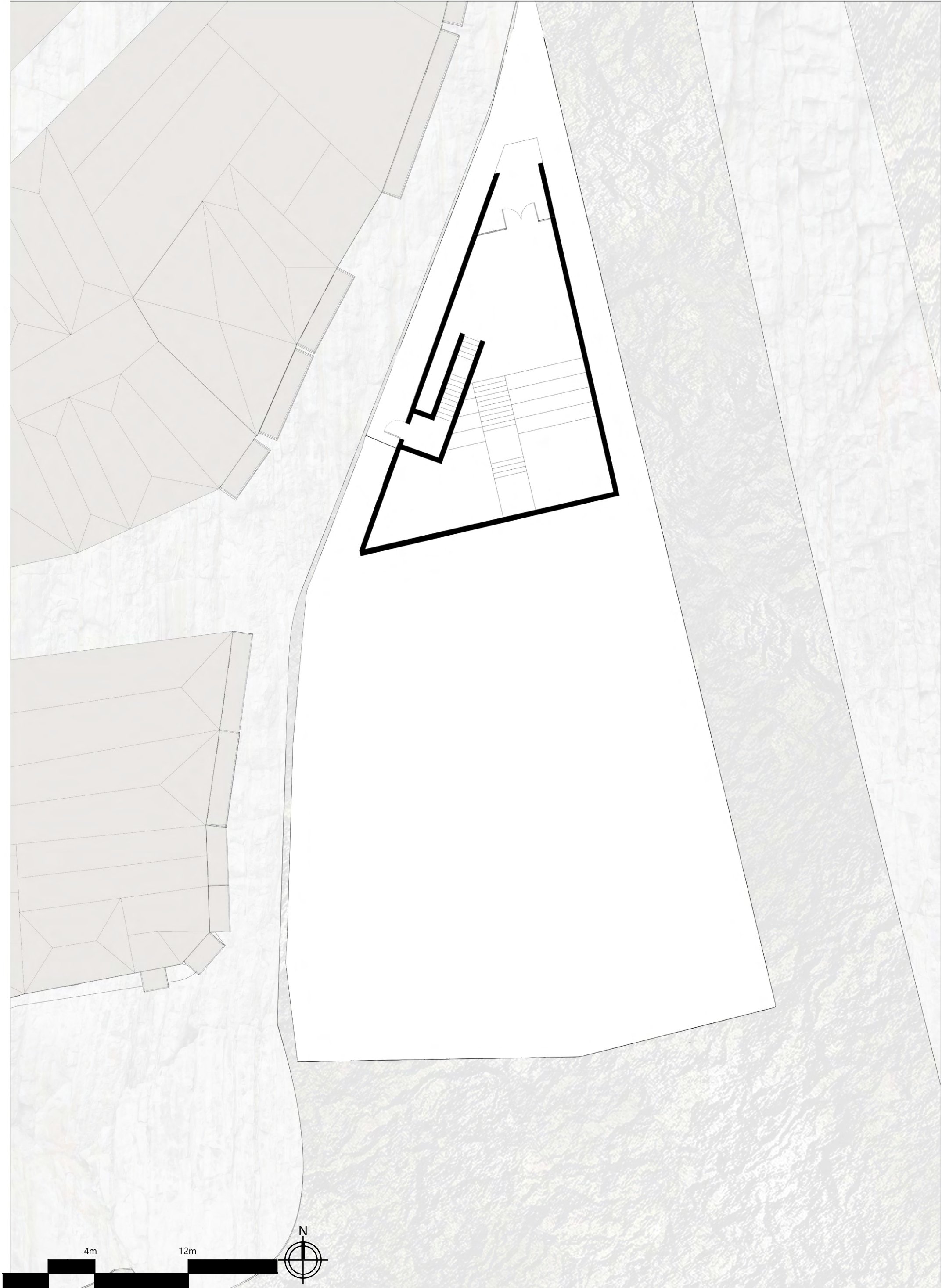


Stone Supplier
Stone Quarry

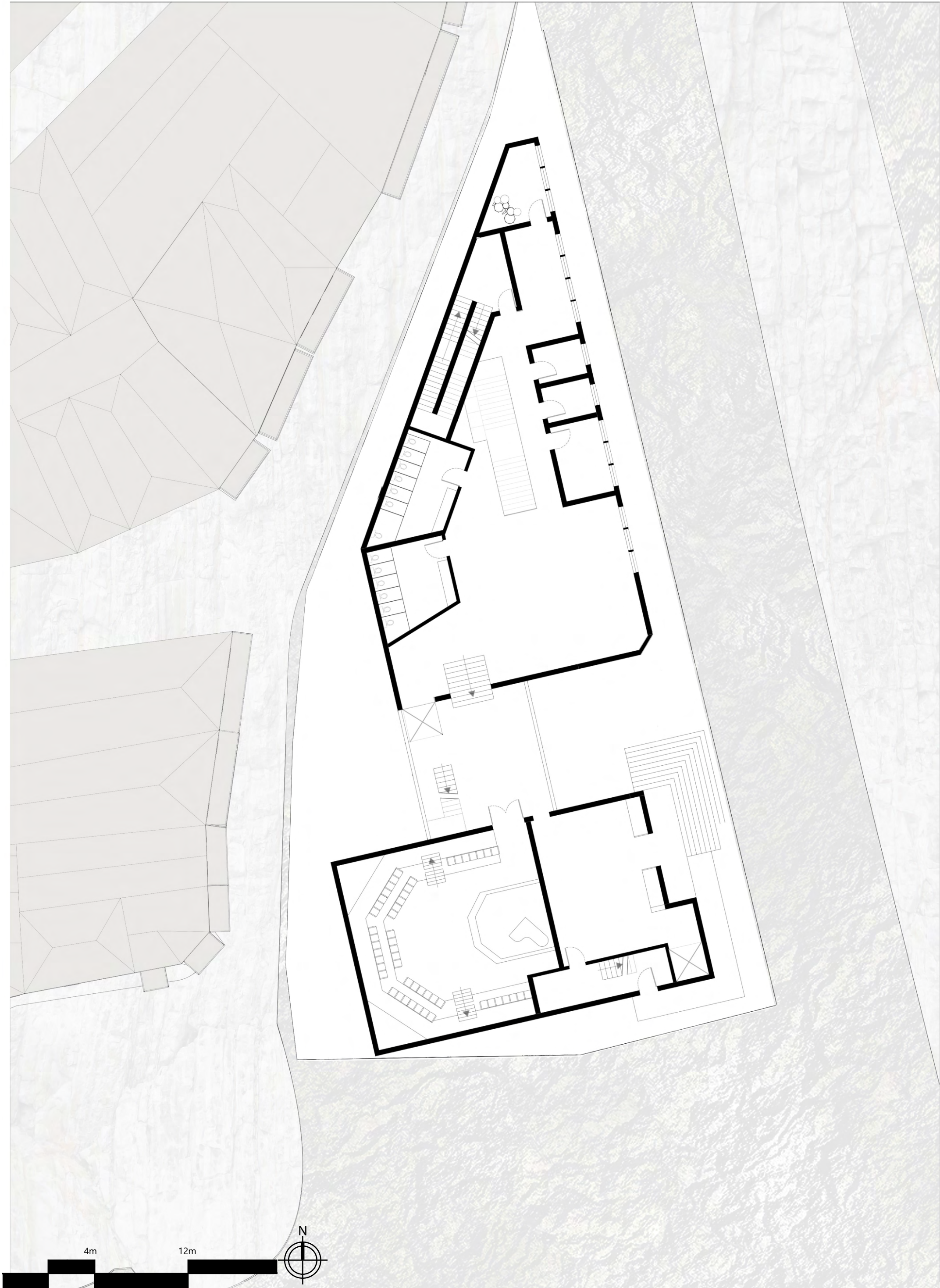


Environmental Strategy





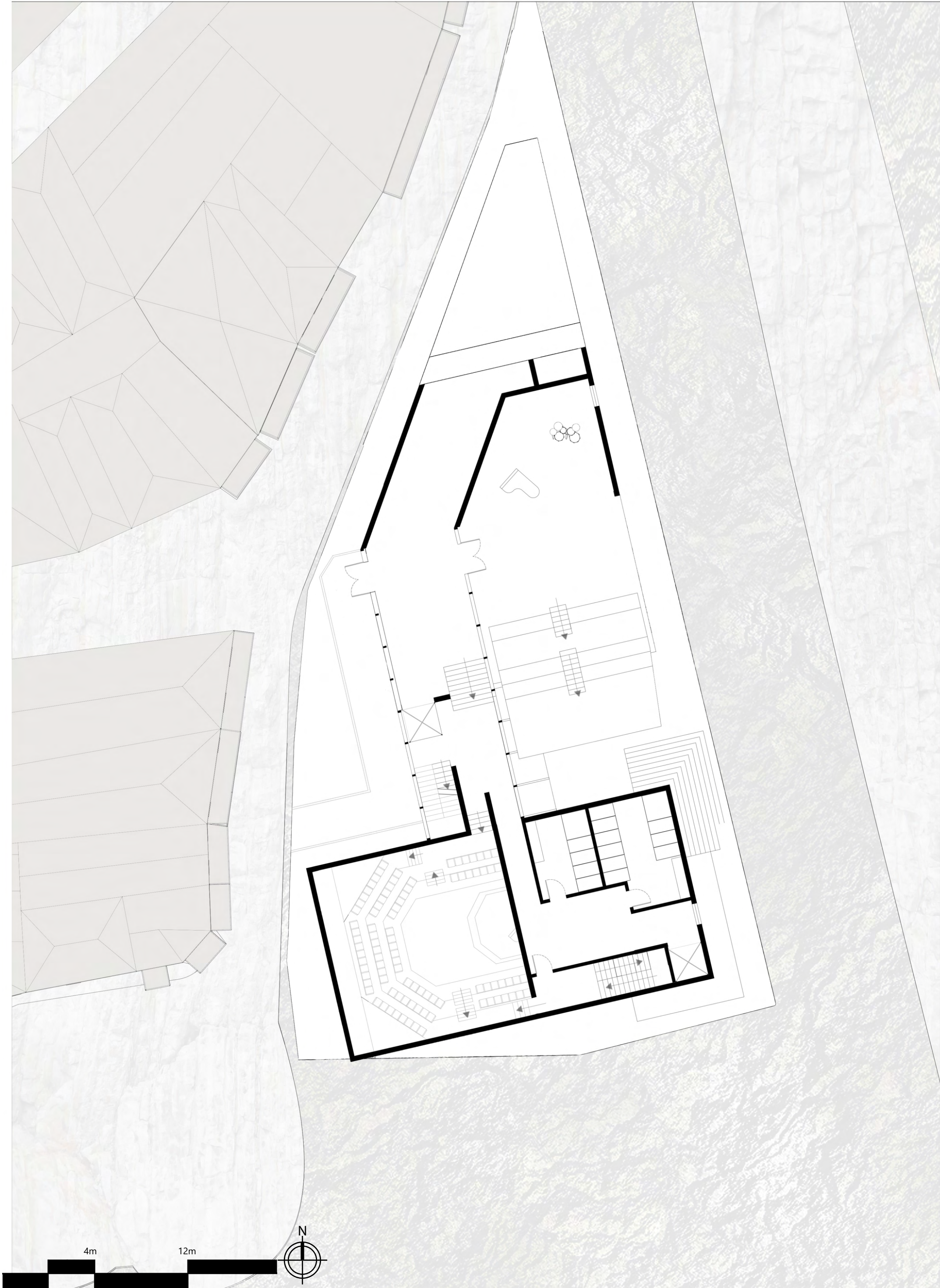
Ground Floor Plan
1:200



First Floor Plan
1:200



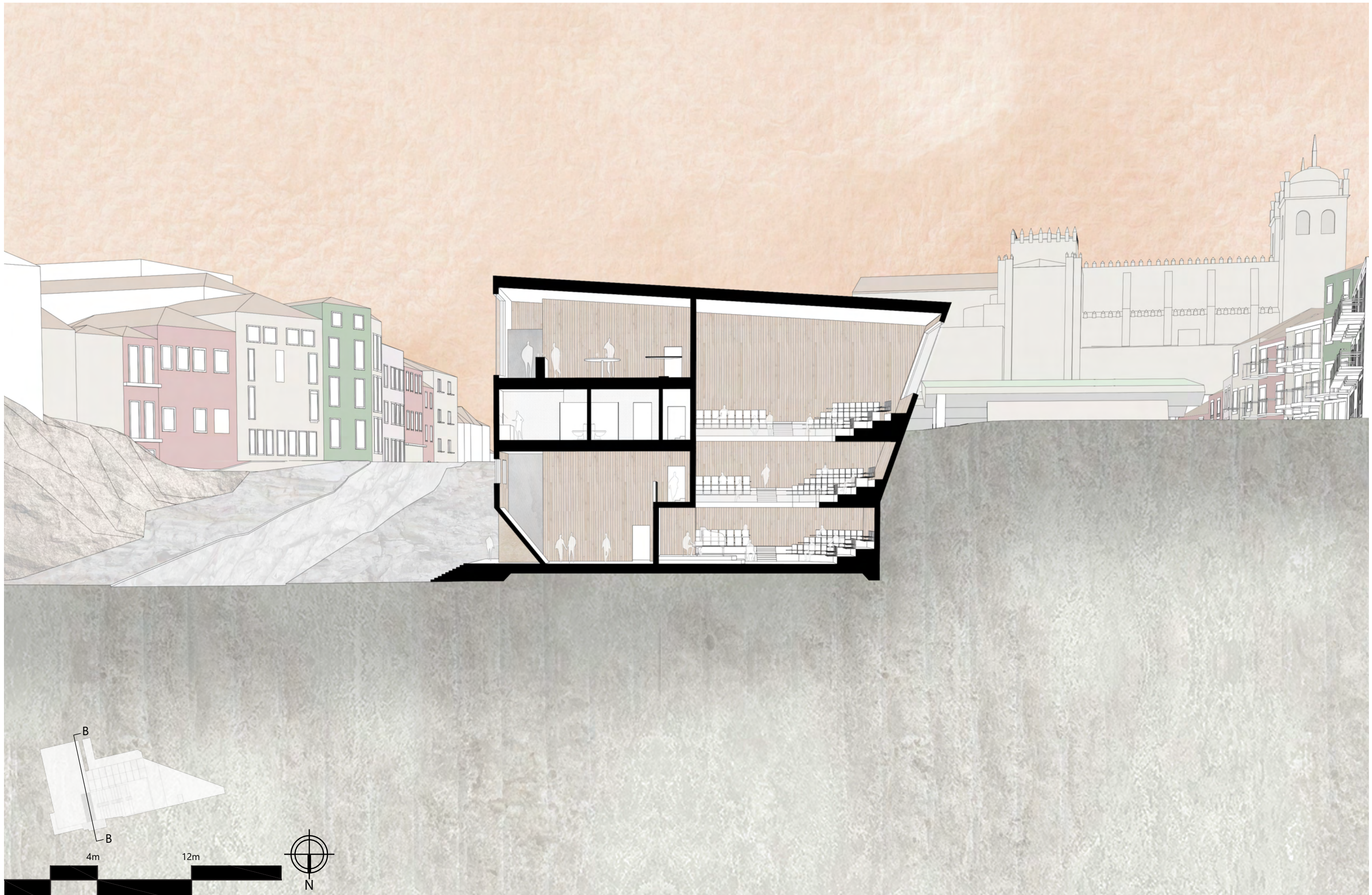
Second Floor Plan
1:200



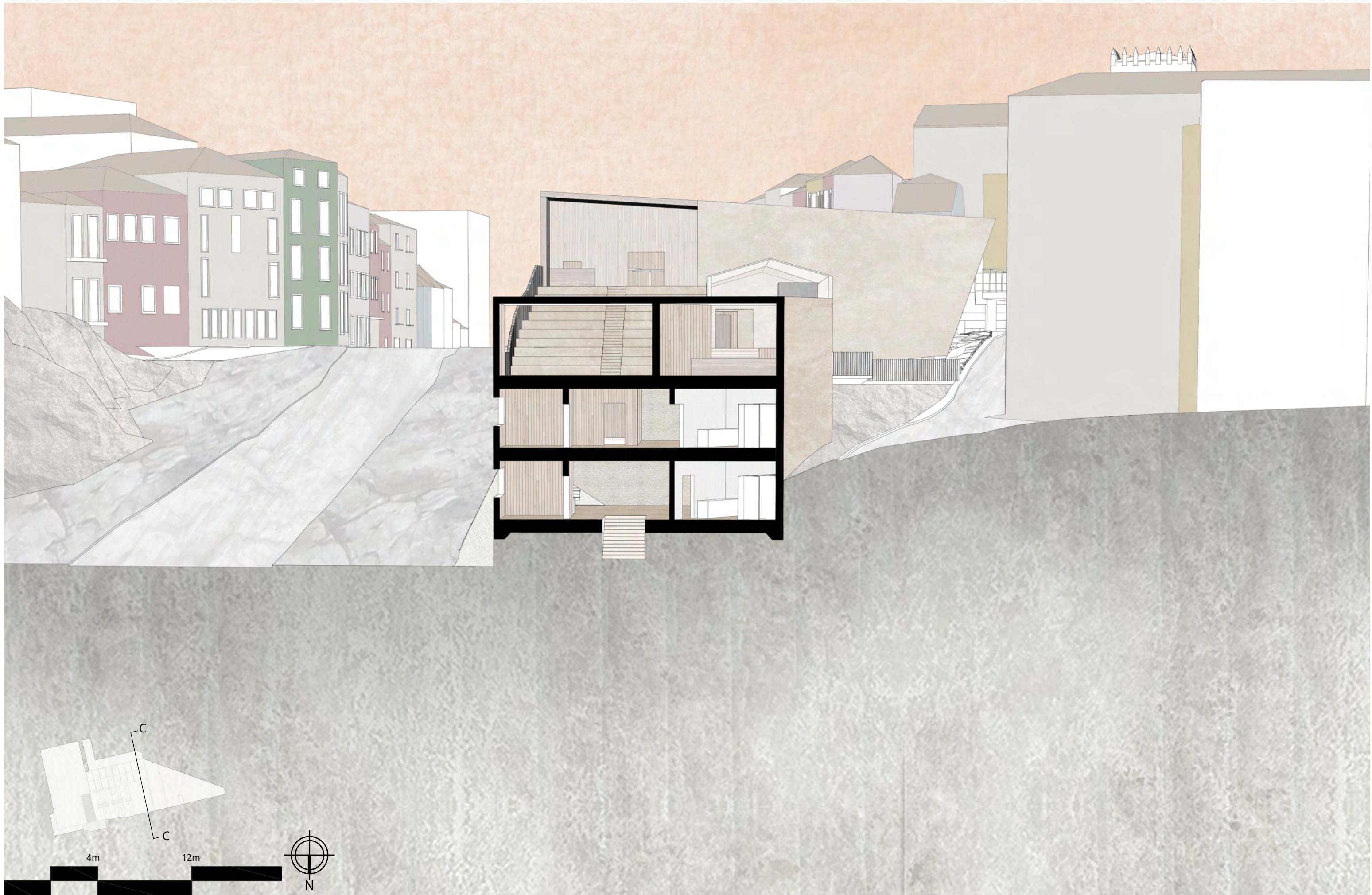
Third Floor Plan
1:200



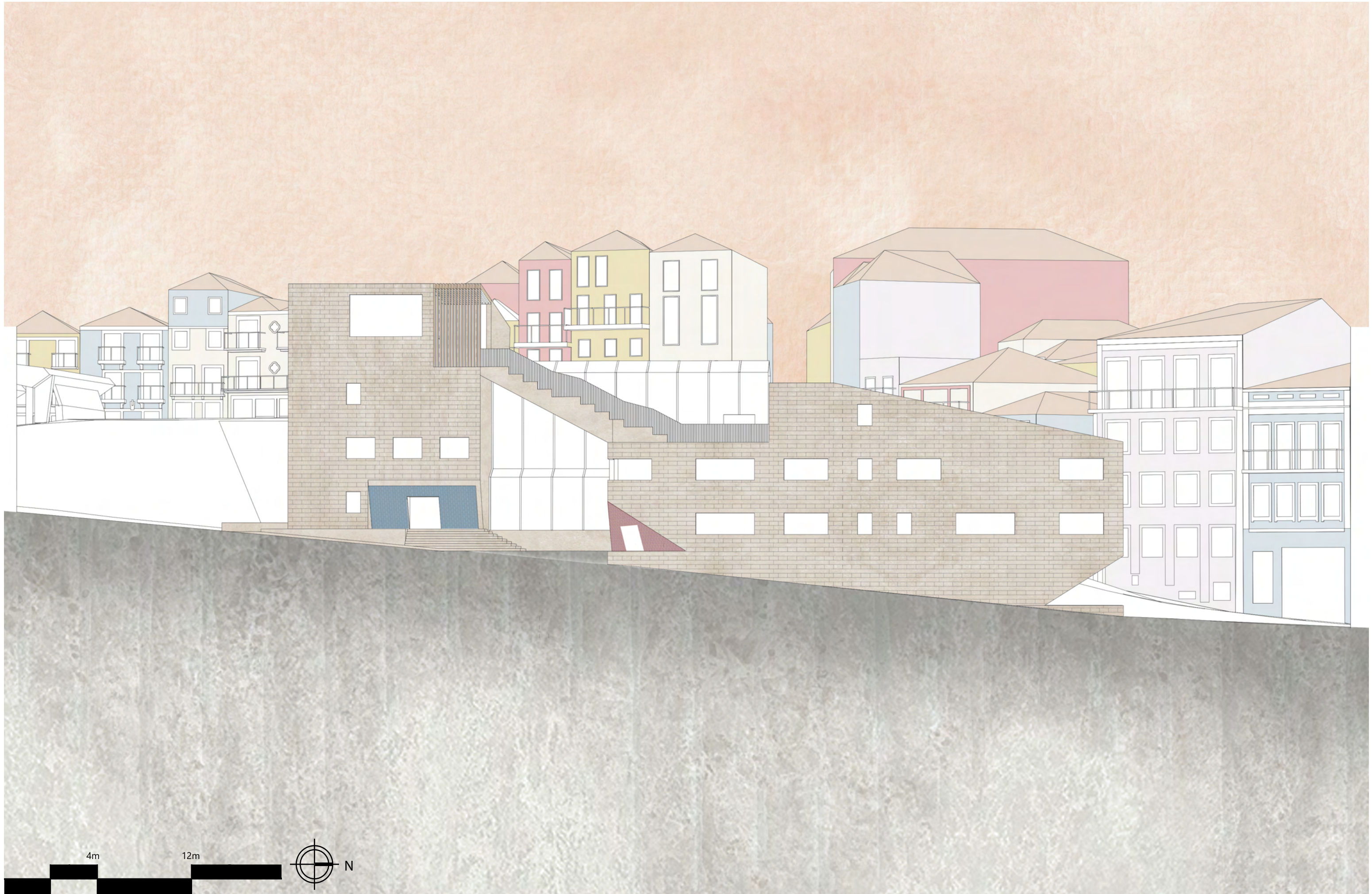
Fourth Floor Plan
1:200



Section
1:200



Section
1:200



Elevation
1:200



Elevation
1:200



Physical Model



Physical Model