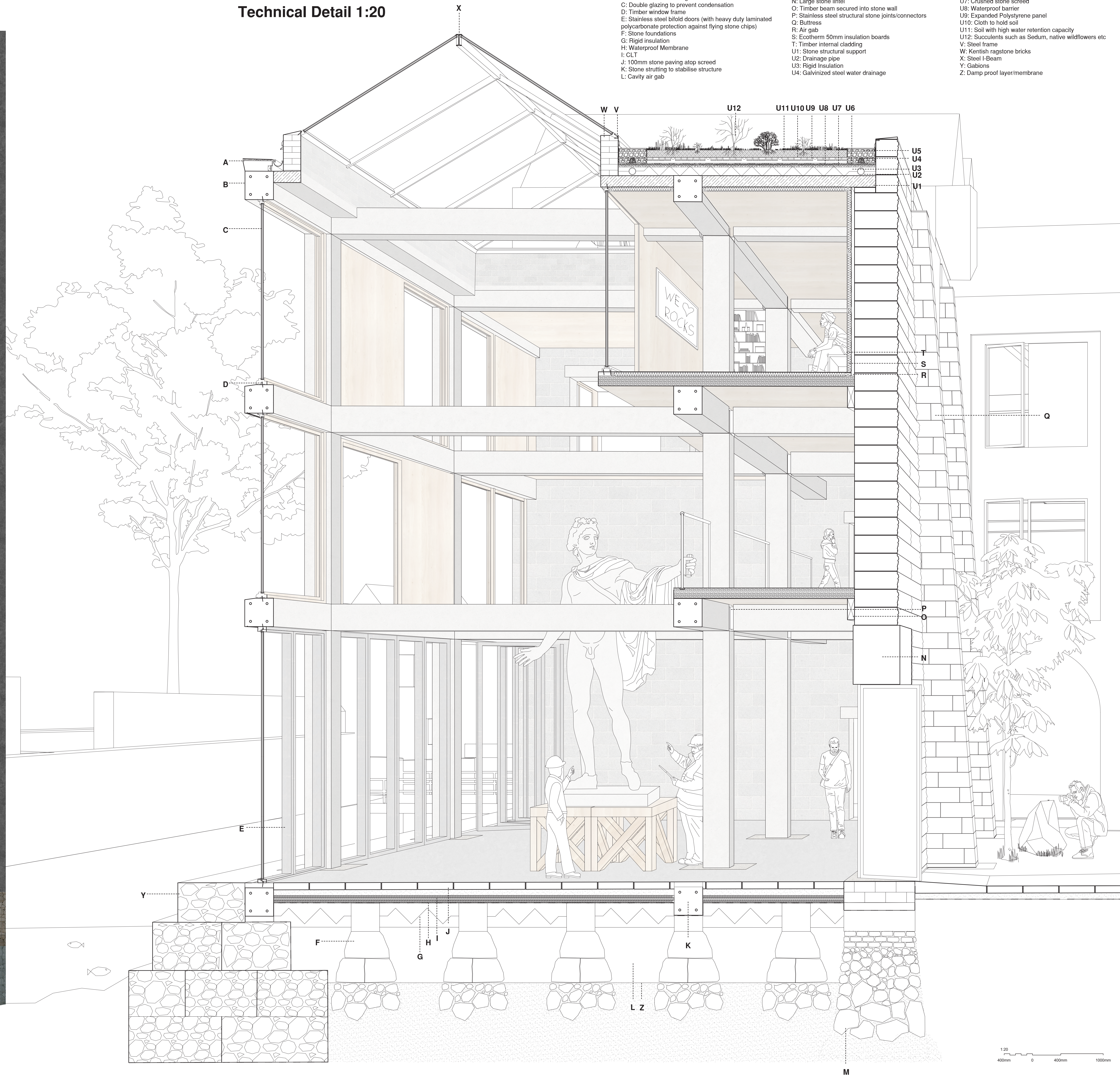


Bay Study 1:20



Technical Detail 1:20



- Key:
- A: Slate tiles, lead flashing and drainage
 - B: Structural Kentish Ragstone
 - C: Double glazing to prevent condensation
 - D: Timber window frame
 - E: Stainless steel bifold doors (with heavy duty laminated polycarbonate protection against flying stone chips)
 - F: Stone foundations
 - G: Rigid insulation
 - H: Waterproof Membrane
 - I: CLT
 - J: 100mm stone paving atop screed
 - K: Stone strutting to stabilise structure
 - L: Cavity air gab
 - M: Stone foundations increasing in size with depth (filled in with crushed stone)
 - N: Large stone lintel
 - O: Timber beam secured into stone wall
 - P: Stainless steel structural stone joints/connectors
 - Q: Buttress
 - R: Air gab
 - S: Ecotherm 50mm insulation boards
 - T: Timber internal cladding
 - U1: Stone structural support
 - U2: Drainage pipe
 - U3: Rigid Insulation
 - U4: Galvanized steel water drainage
 - U5: Gravel covering
 - U6: Multilayer film with aluminium vapour barrier
 - U7: Crushed stone screed
 - U8: Waterproof barrier
 - U9: Expanded Polystyrene panel
 - U10: Cloth to hold soil
 - U11: Soil with high water retention capacity
 - U12: Succulents such as Sedum, native wildflowers etc
 - V: Steel frame
 - W: Kentish ragstone bricks
 - X: Steel I-Beam
 - Y: Gabions
 - Z: Damp proof layer/membrane

Longitudinal Section 1:50



Internal Views



Transverse Section 1:50

