

Project Briefing



Nordhavn Water House

This project offers a completely new Danish sauna and swimming experience in Nordhavn. It is intended to be a friendly wellness centre where residents and guests may experience the Danish sauna tradition; With rituals on various levels, this facility offers a serene swimming, spa, and sauna experience.

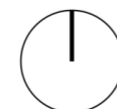
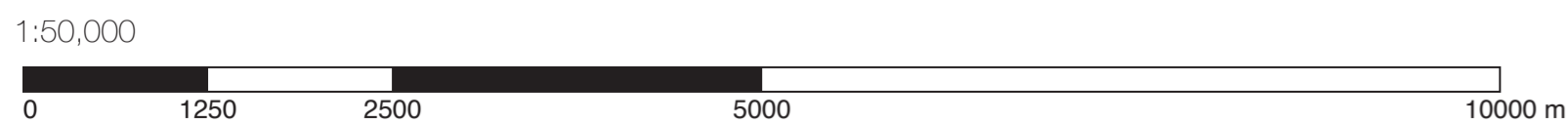
Additionally, this building serves as a learning pool for children in Nordhavn and students at the Nordhavn International School, which is situated across from the property. It offers a secure and convenient environment for learning to swim.

Through rituals and social interaction, the Danish sauna culture fosters interpersonal relationships and enhances well-being in Nordhavn, Denmark.

Copenhagen Site analysis



- Swimming pools
- Site
- Leisure Centres



A growing body of evidence emphasizes the connection between different blue nature activities and increased mental health and psycho-social well-being. Being near, in, under, or on the water can make people happier, healthier, more connected, and better at what they do. However within Denmark there is 344 swimming facilities within Denmark. In Nordhavn alone there is no swimming facilities, the closest access points to well being related facilities within Nordhavn are saunas.

Danish survey data suggested that Danish people have a 69% enjoyment rating with physical activity and wellbeing activities

69%

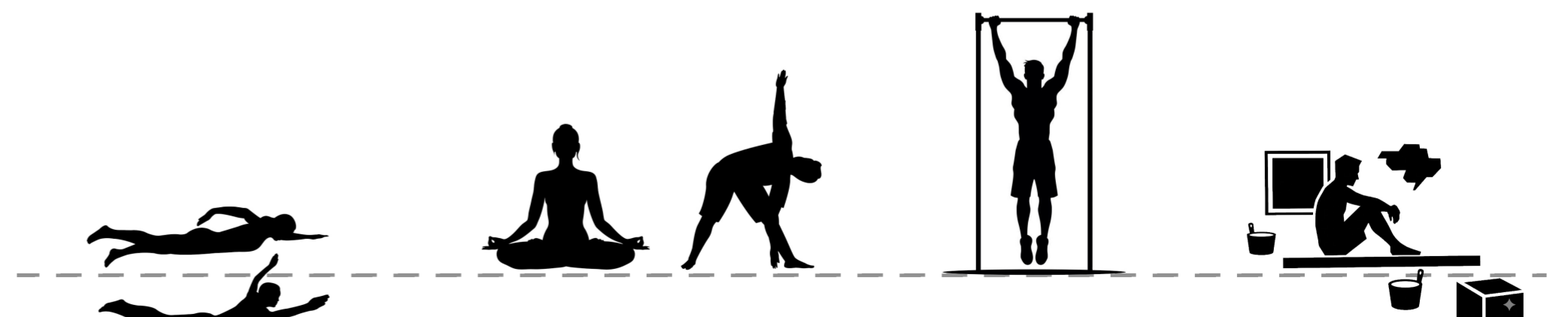
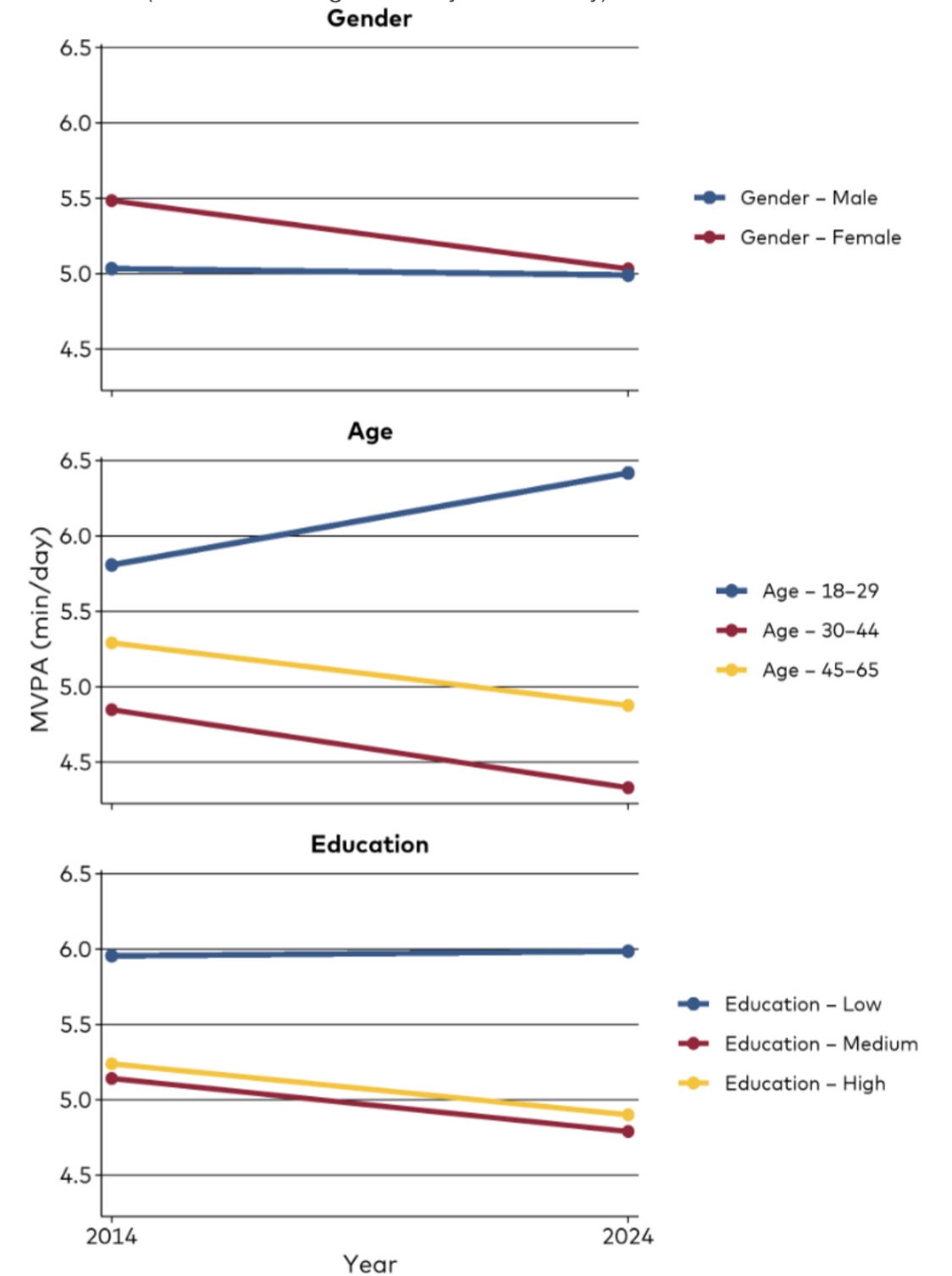
Danish surveys suggested that children aged between 11-15 years old do not meet the recommended amount of physical activity a day. Only 33% meet the recommended of 60 minutes of physical activity a day

33%

Additionally to this it is stated that 1/3 people are physically inactive within Denmark.

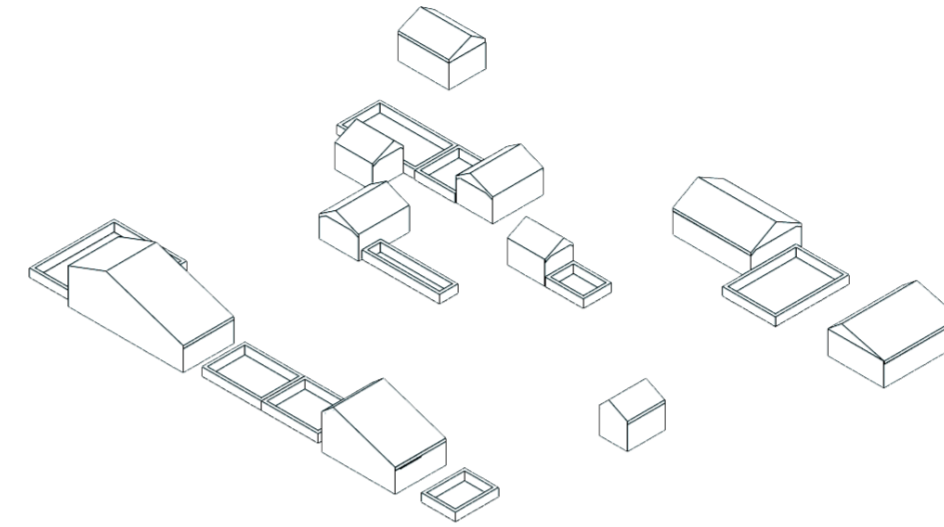
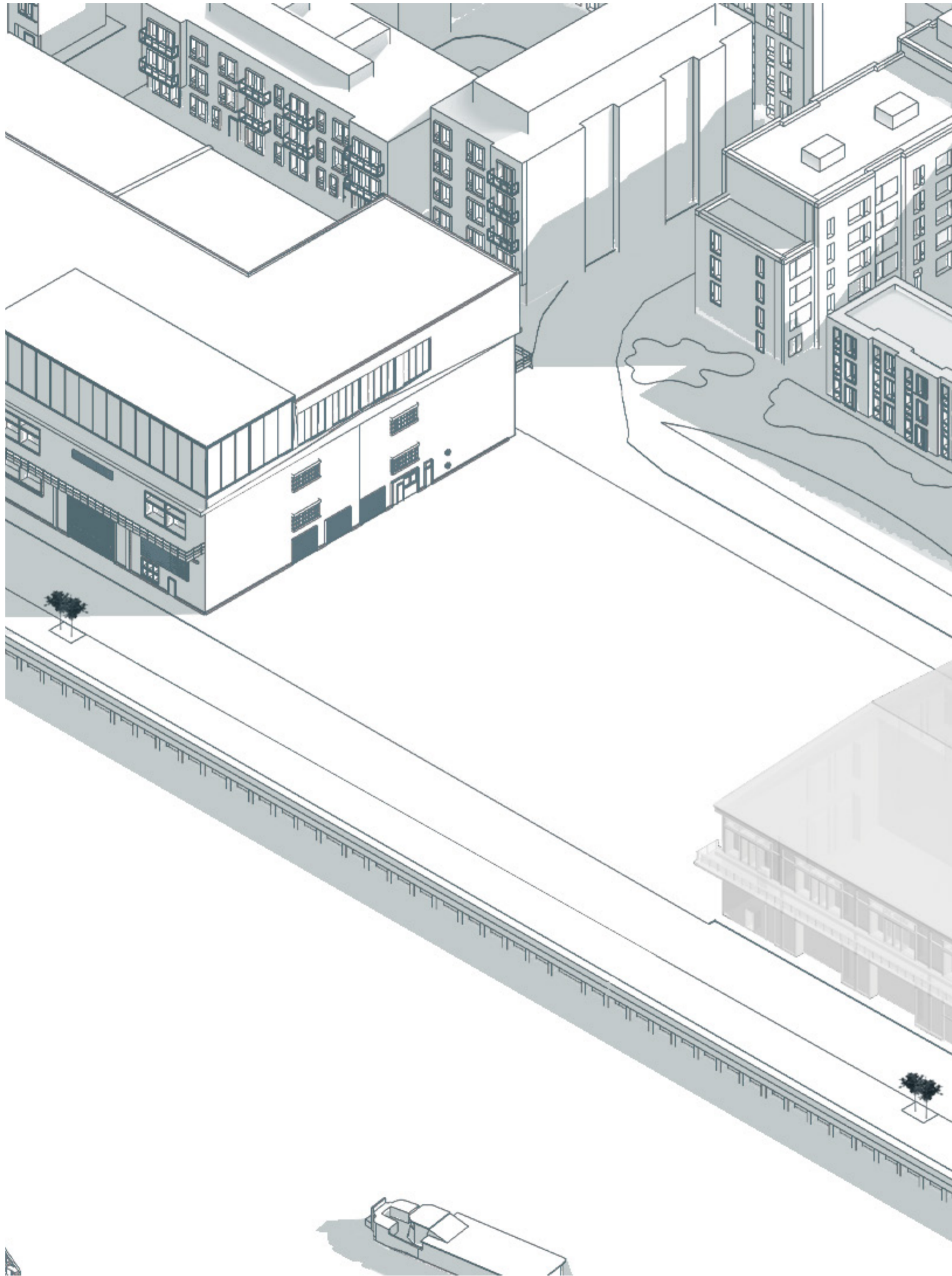
1/3

MVPA (Moderate-to-Vigorous Physical Activity)

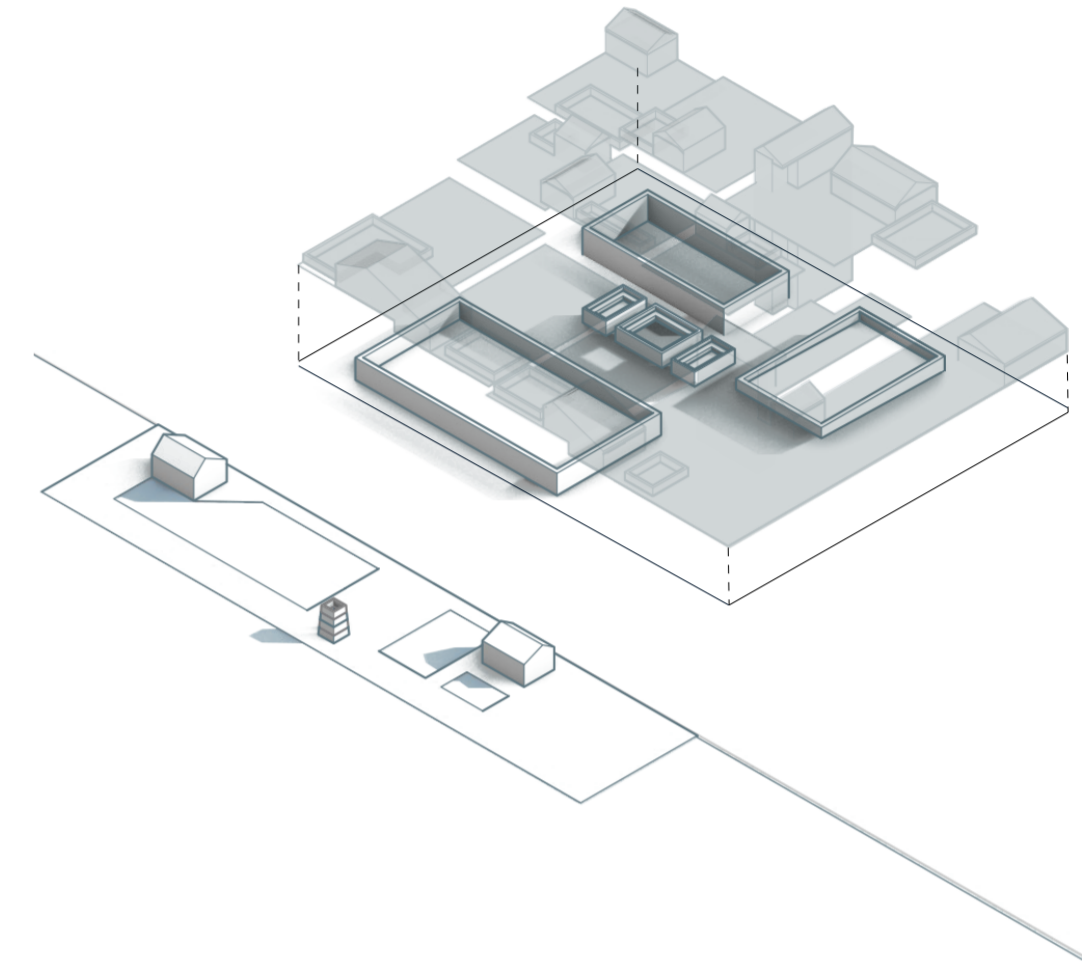


Activities with direct correlation to improving mental health and wellbeing

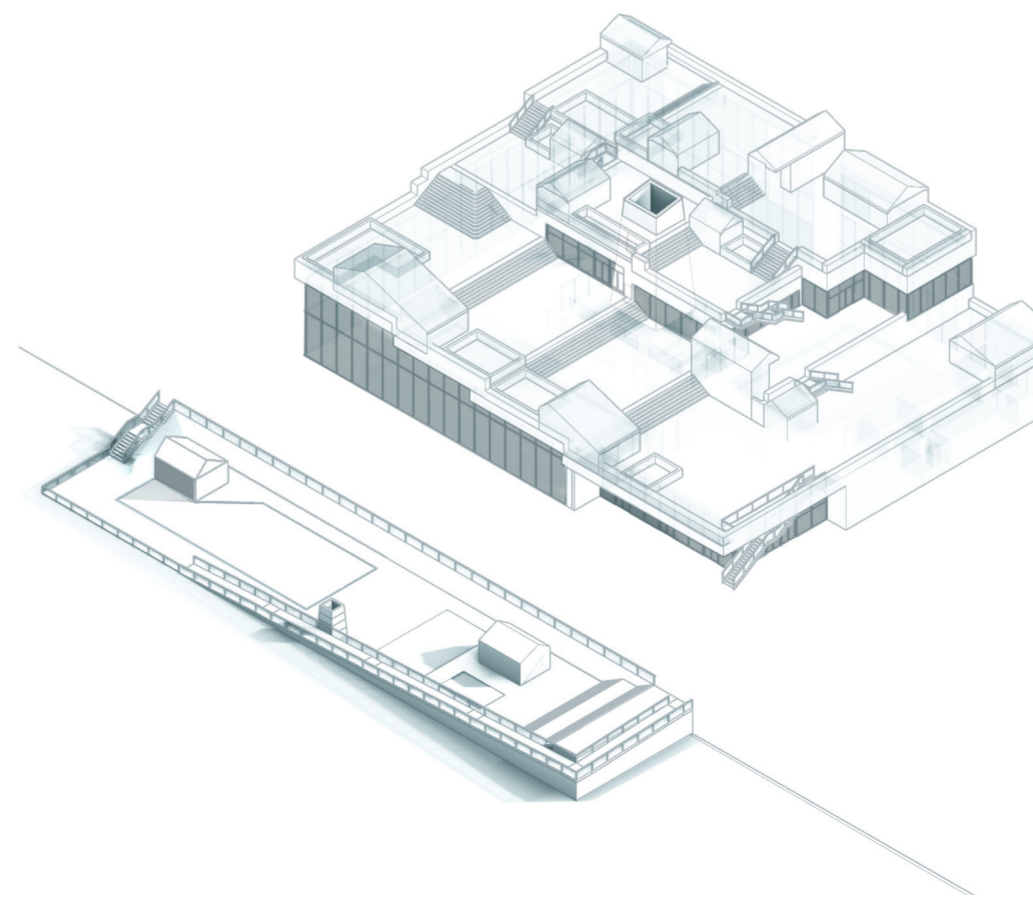
Design Development



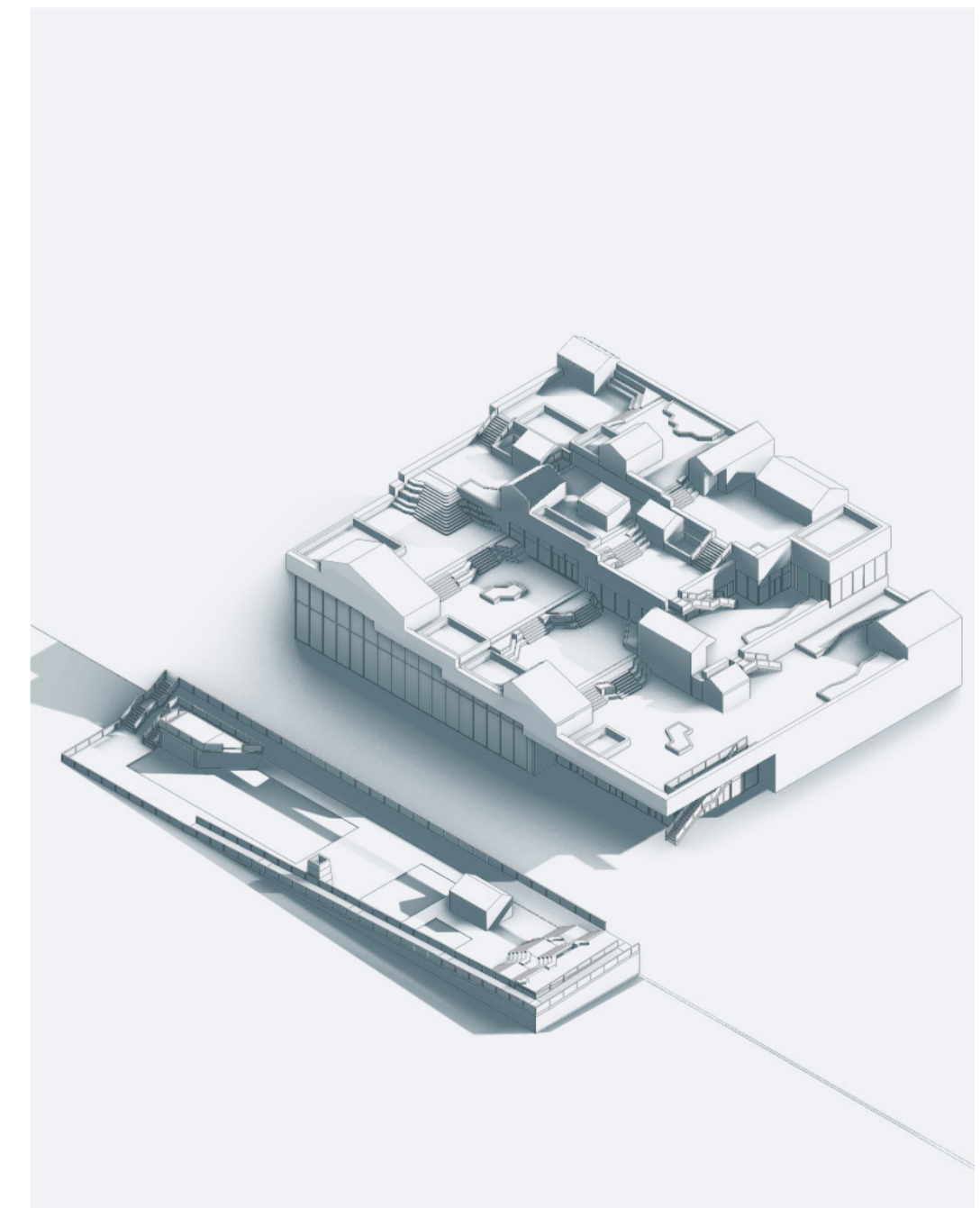
Sauna sheds with swimming pool on site.



Saunas raised onto the roof to give spaces for swimming pools and spas.

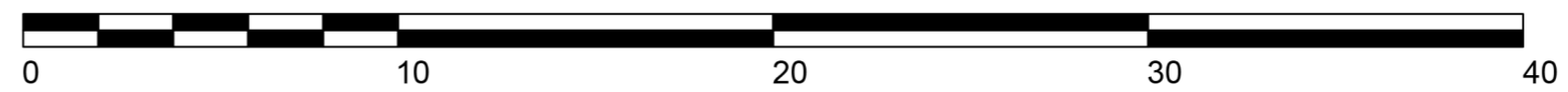
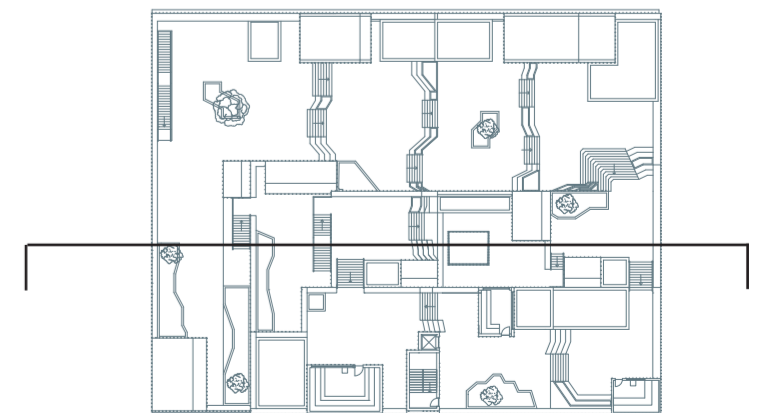
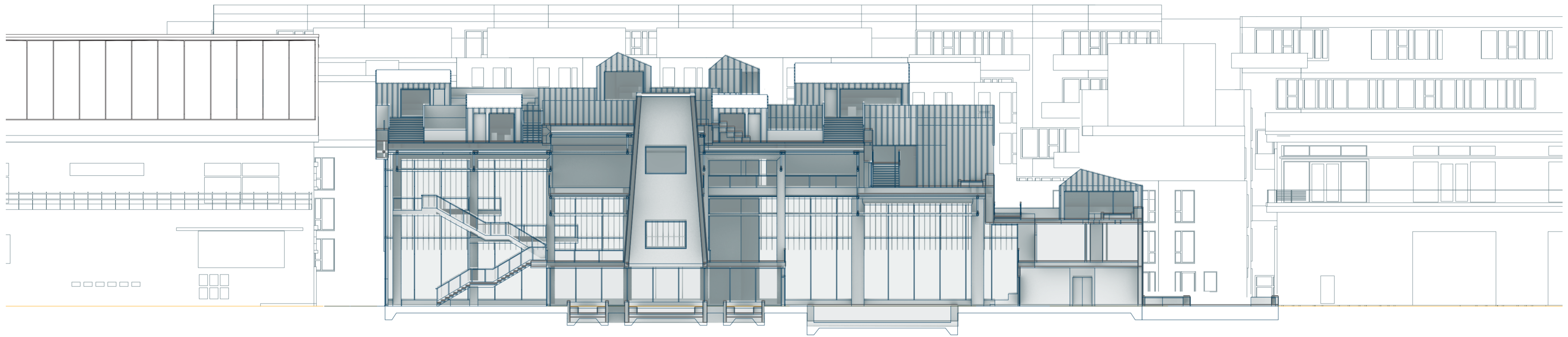


Skywell and curtain walls bring light into the building.



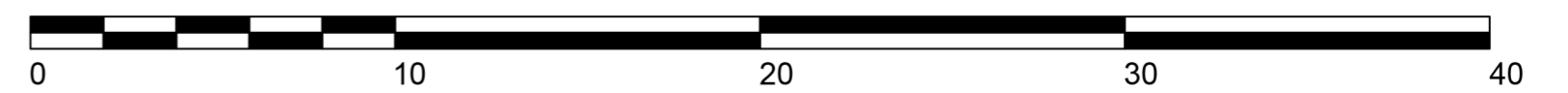
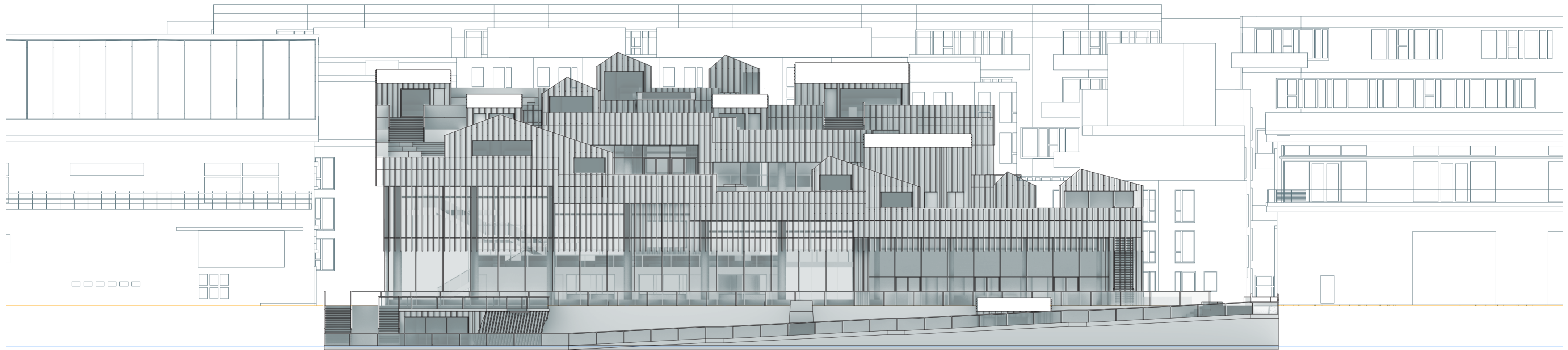
Trees and seating areas to improvise the landscape of the roof.

1:200 Section



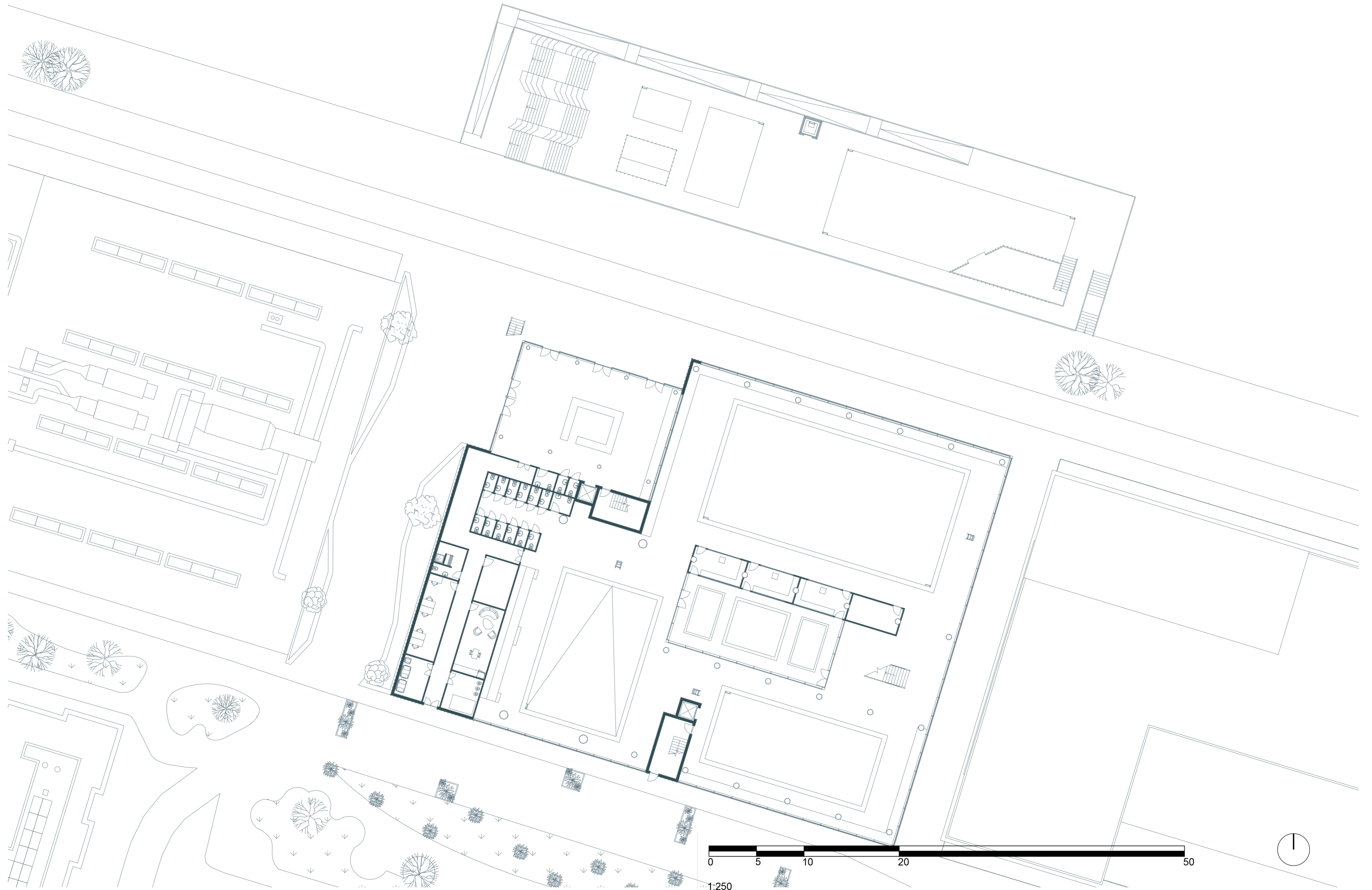
1:200

1:200 Front Elevation

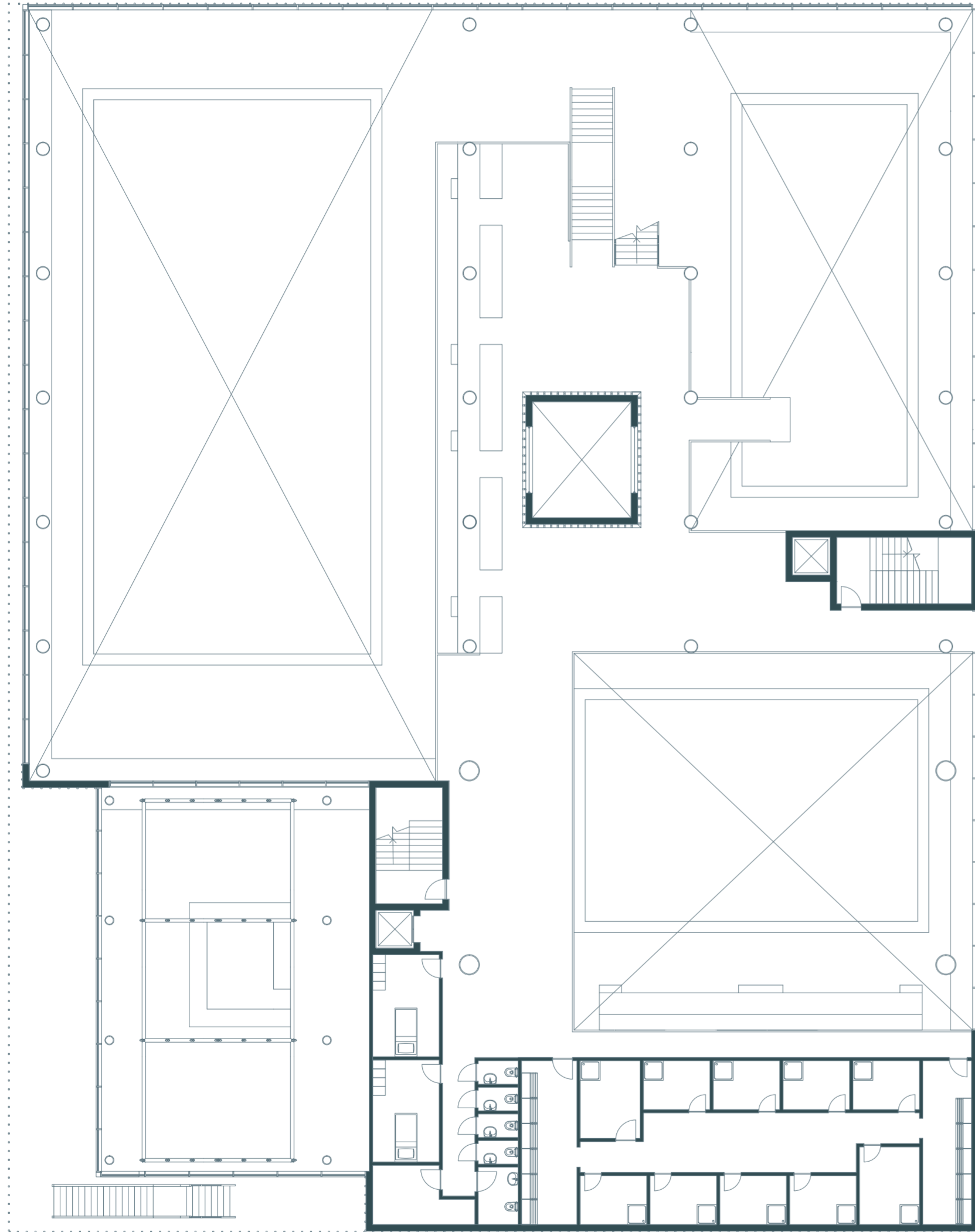


1:200

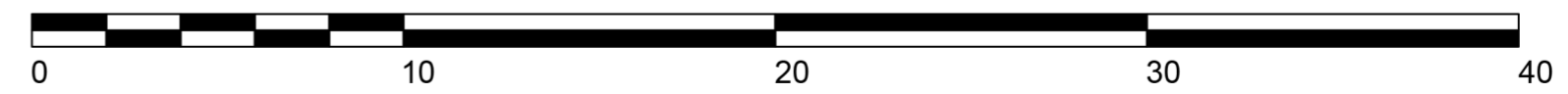
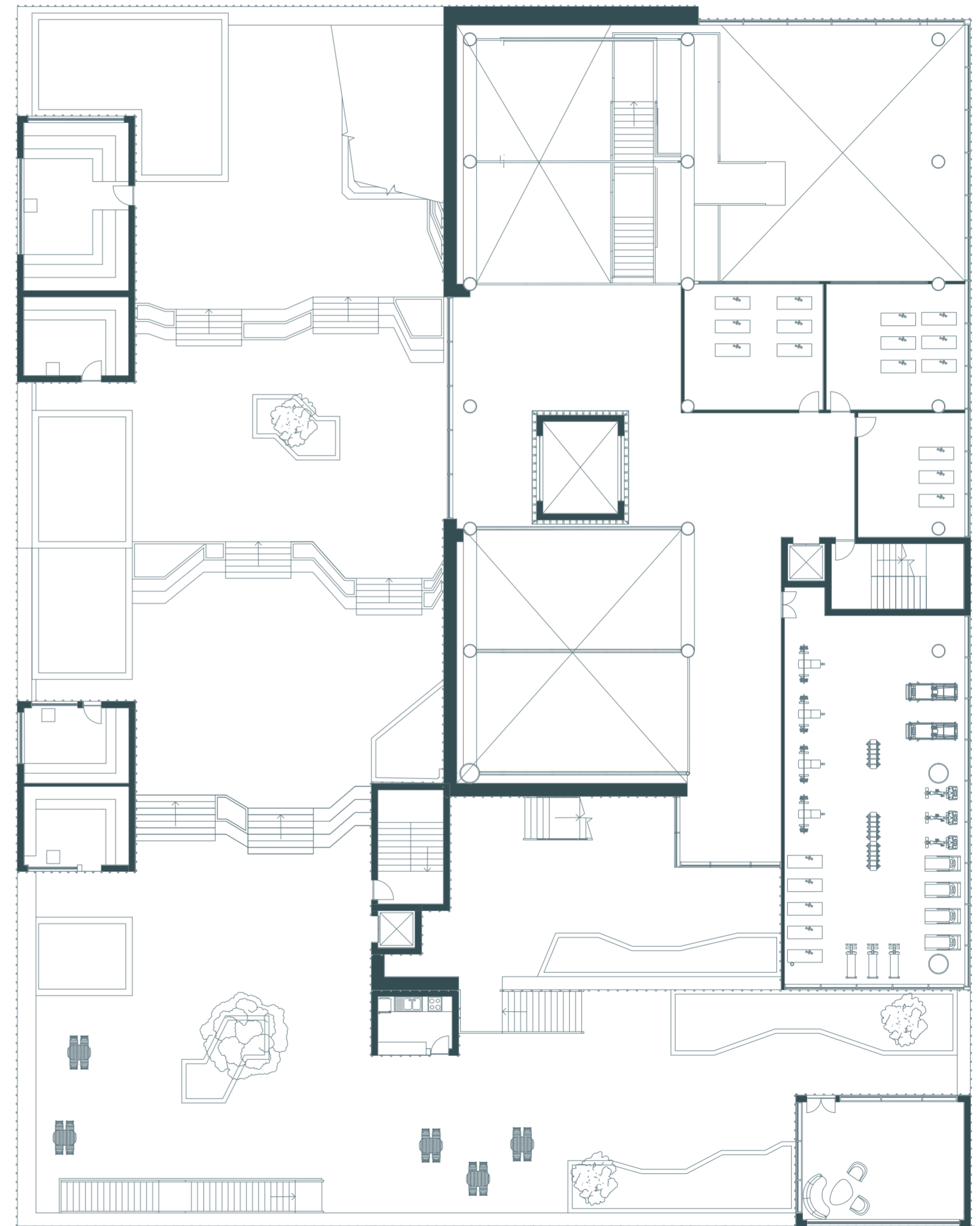
1:250 Masterplan



1:200 1st Floor Plans



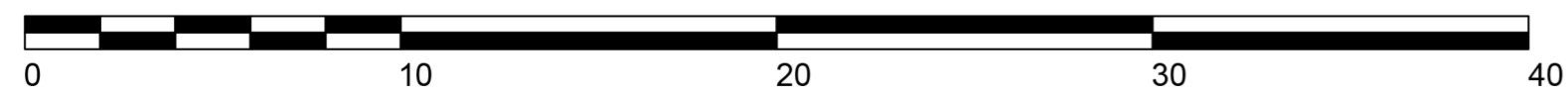
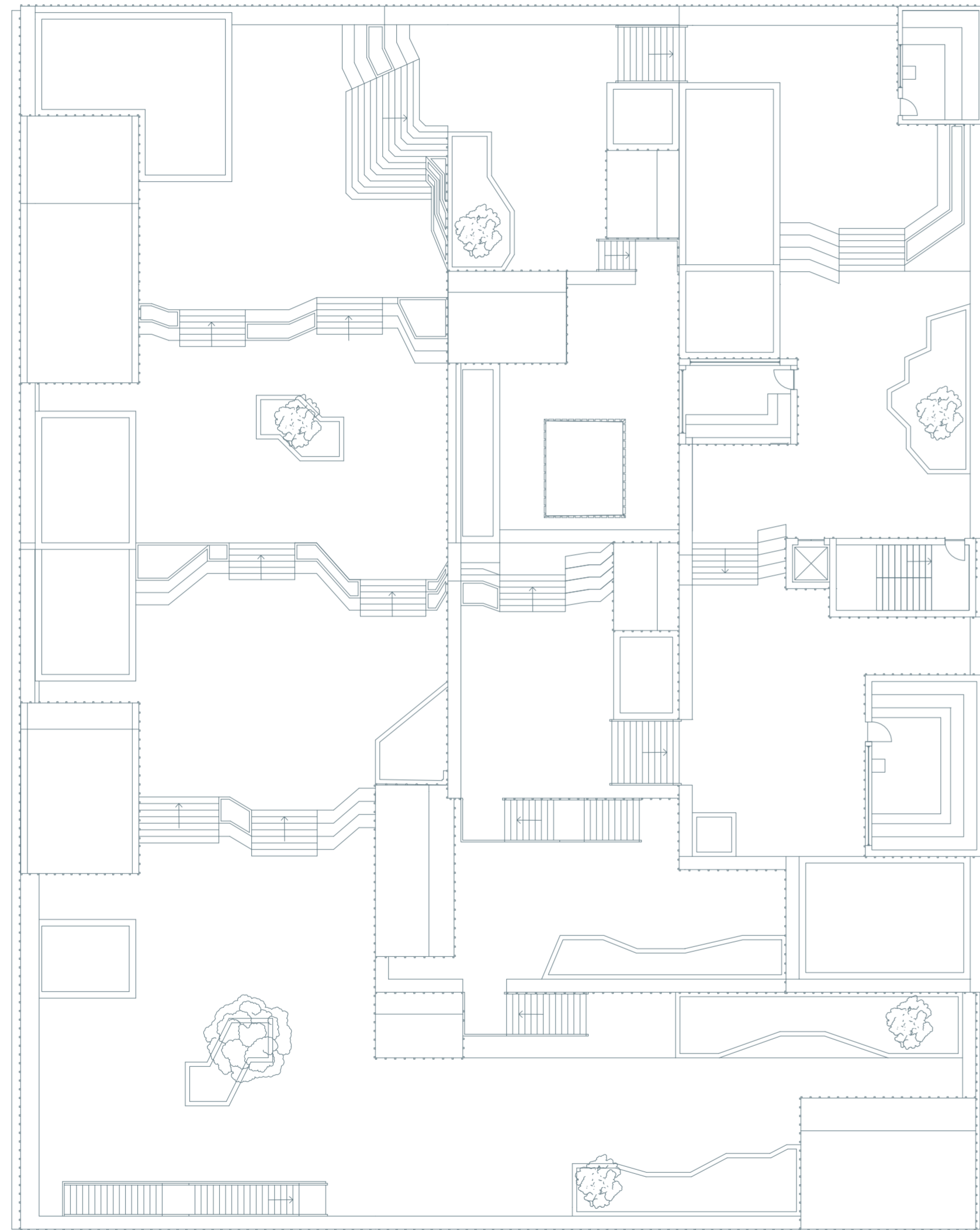
1:200 2nd Floor Plans



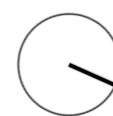
1:200



1:200 Roof Plans



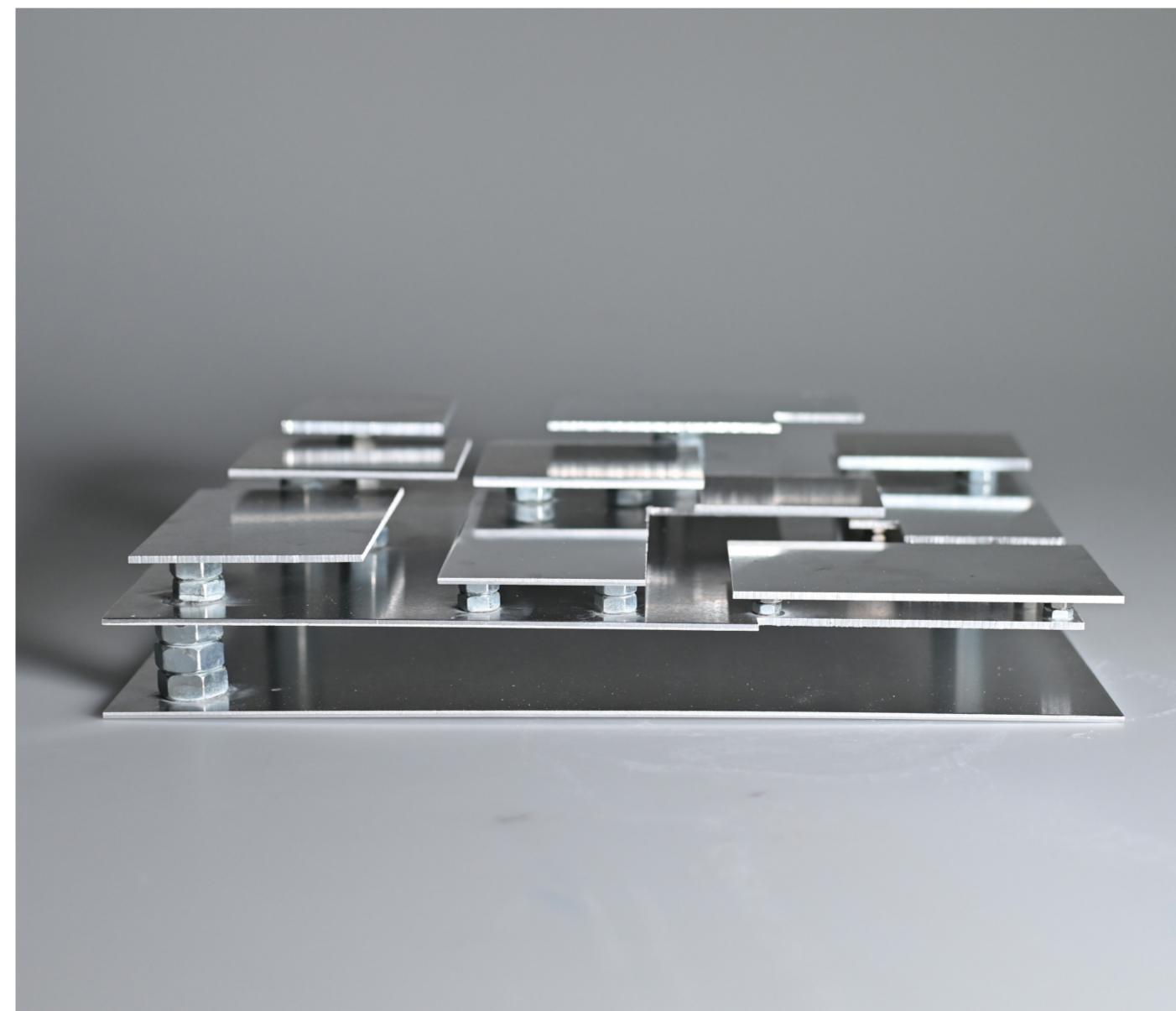
1:200



Models



1:200 Contextural Model



1:200 Conceptual Model



1:50 Structural Model

