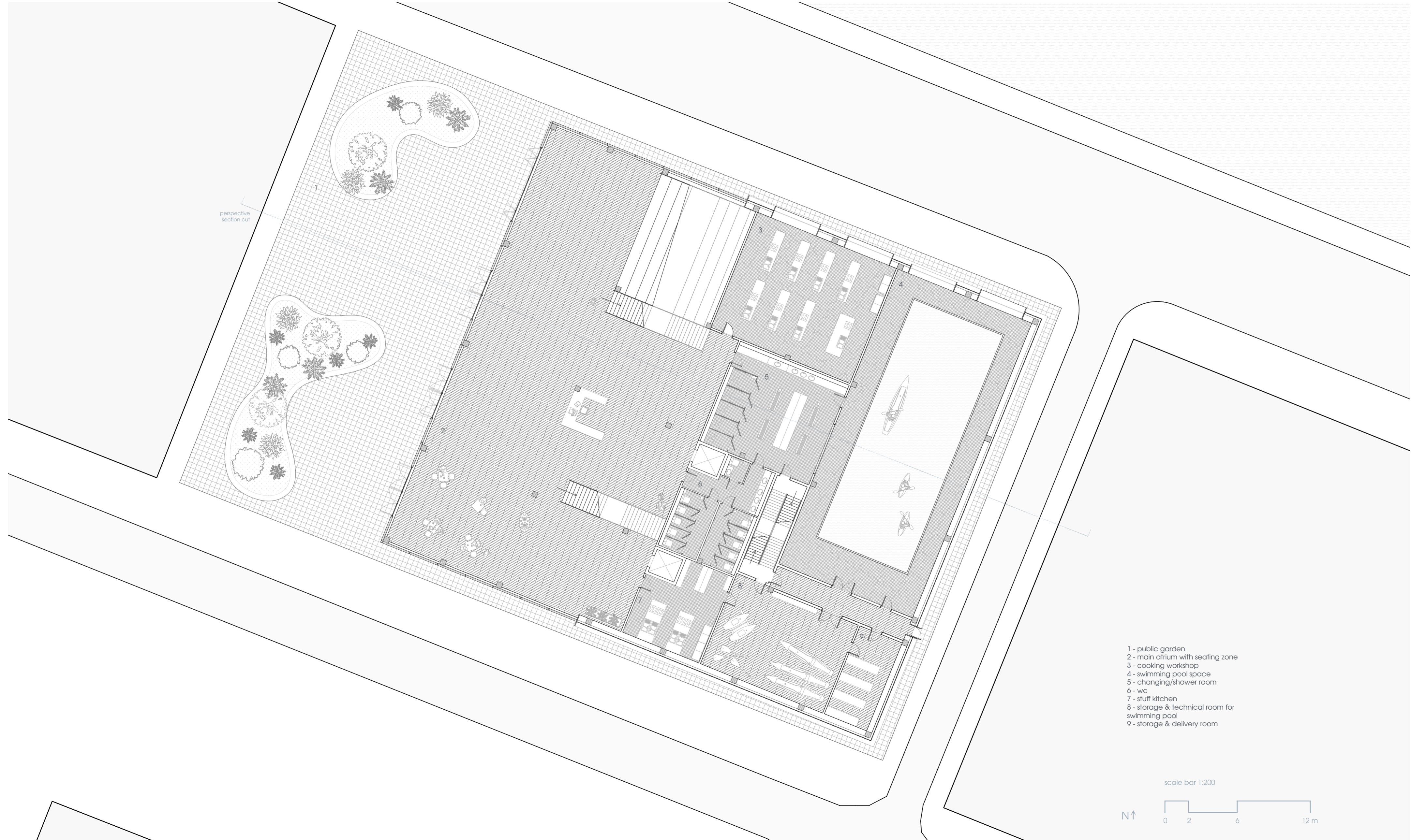


ground floor plan

scale 1:200 @A2



perspective  
section cut

- 1 - public garden
- 2 - main atrium with seating zone
- 3 - cooking workshop
- 4 - swimming pool space
- 5 - changing/shower room
- 6 - wc
- 7 - staff kitchen
- 8 - storage & technical room for swimming pool
- 9 - storage & delivery room

scale bar 1:200

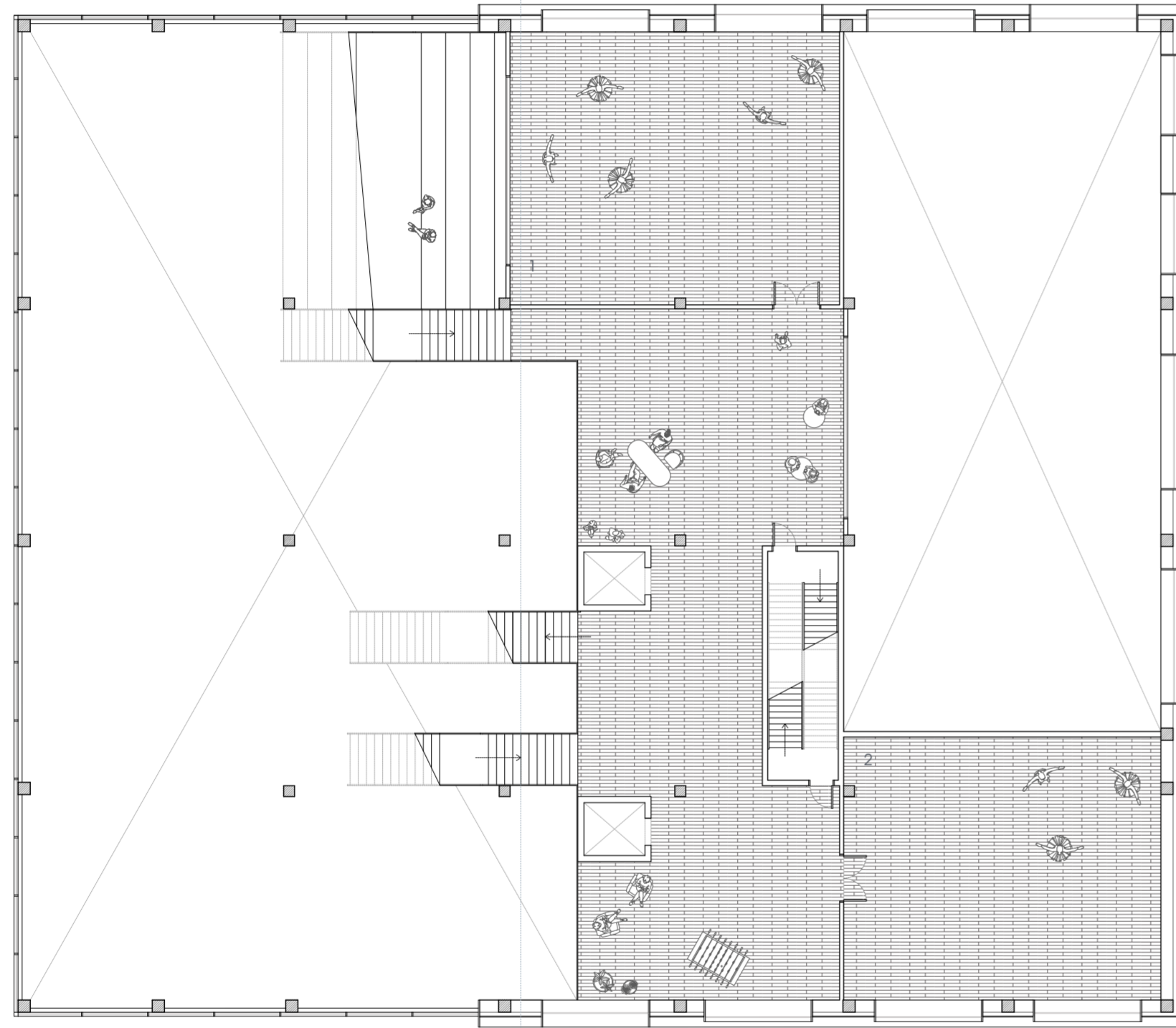


upper floors plans

scale 1:200 @A2

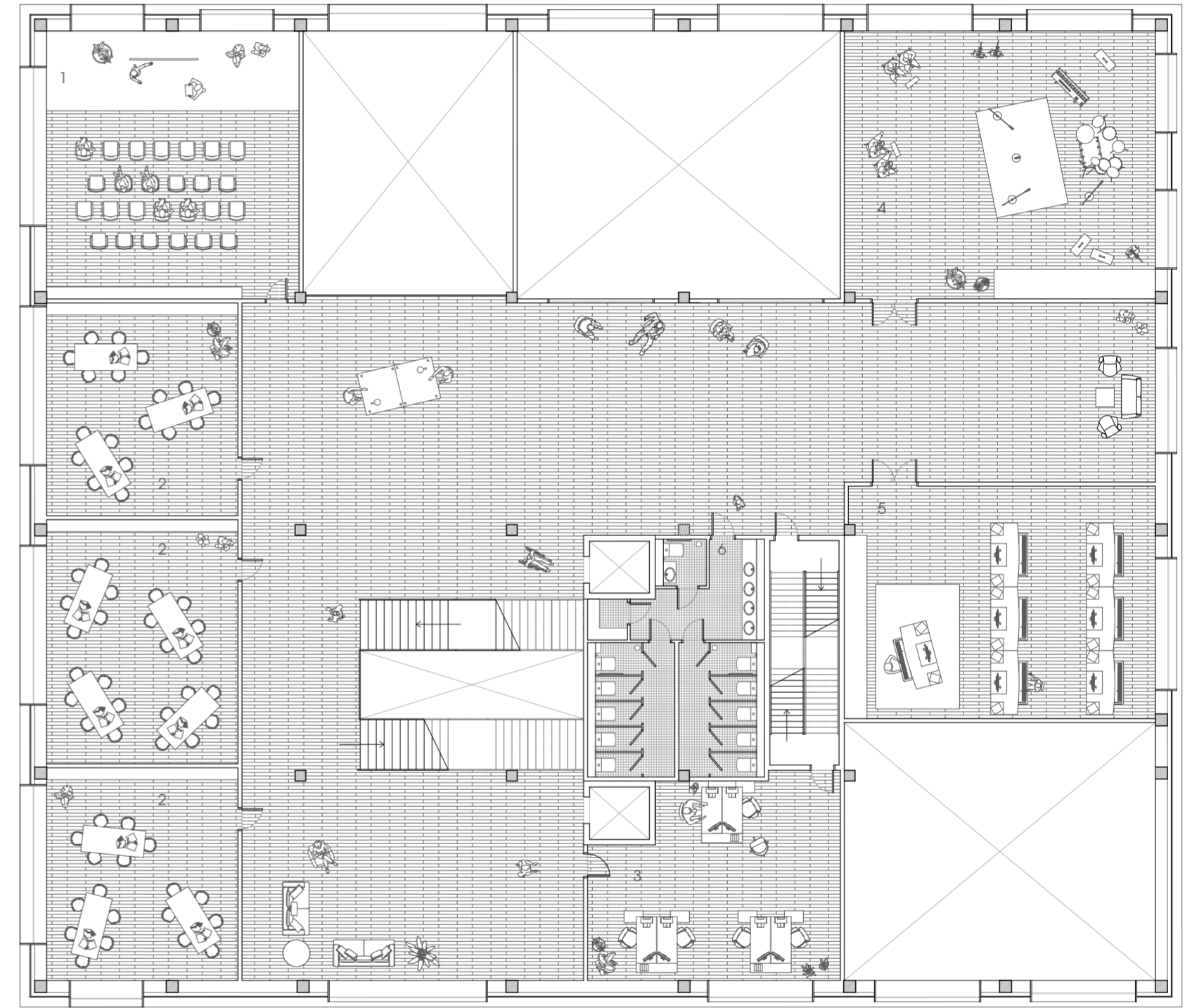
1st floor

transverse section cut



- 1 - dance studio
- 2 - dance/acting space

2nd floor

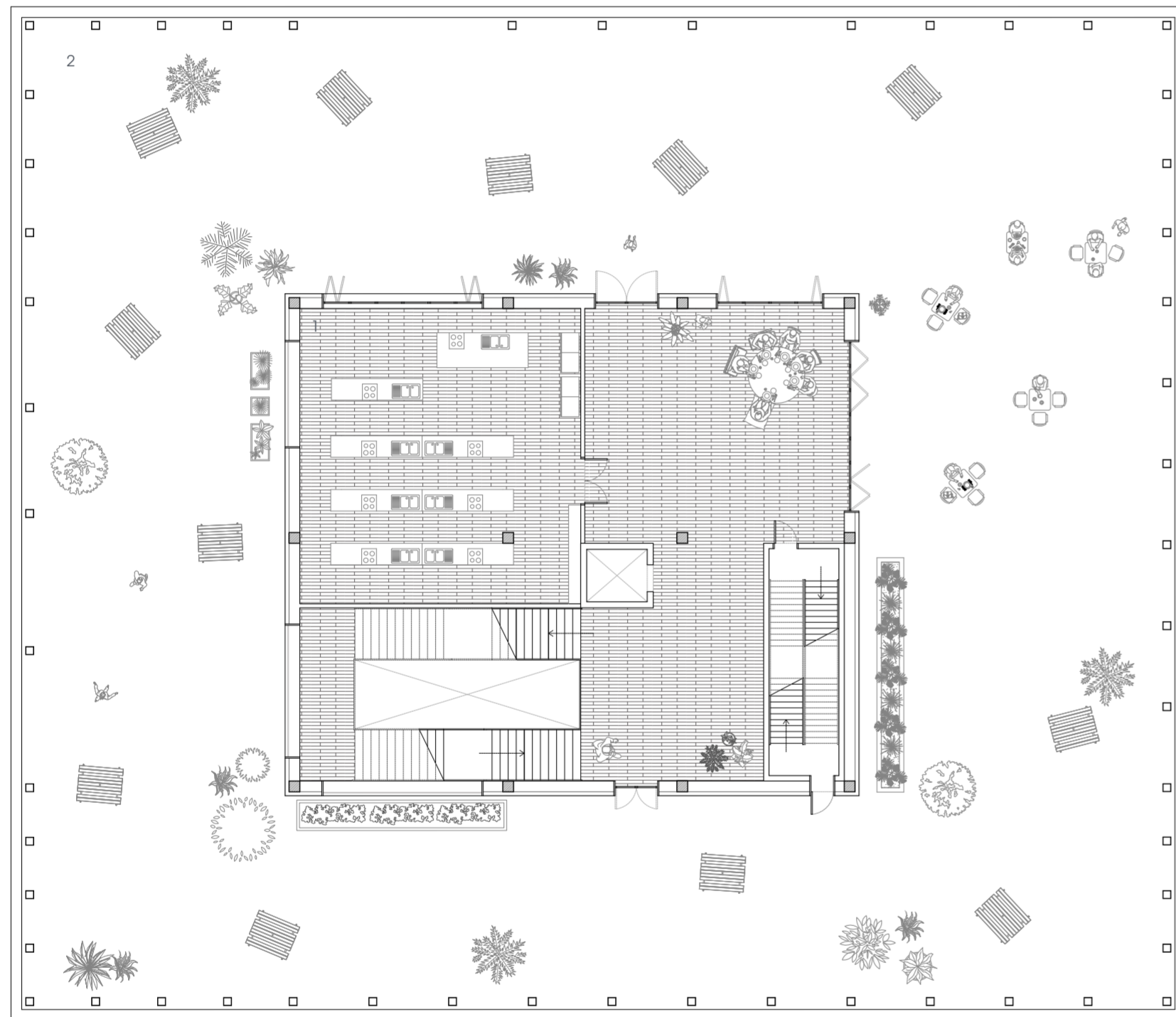


- 1 - conference/debate workshop
- 2 - seminar/theory taught spaces
- 3 - staff room & storage
- 4 - music studio
- 5 - music/film making studio
- 6 - wc

scale bar 1:200

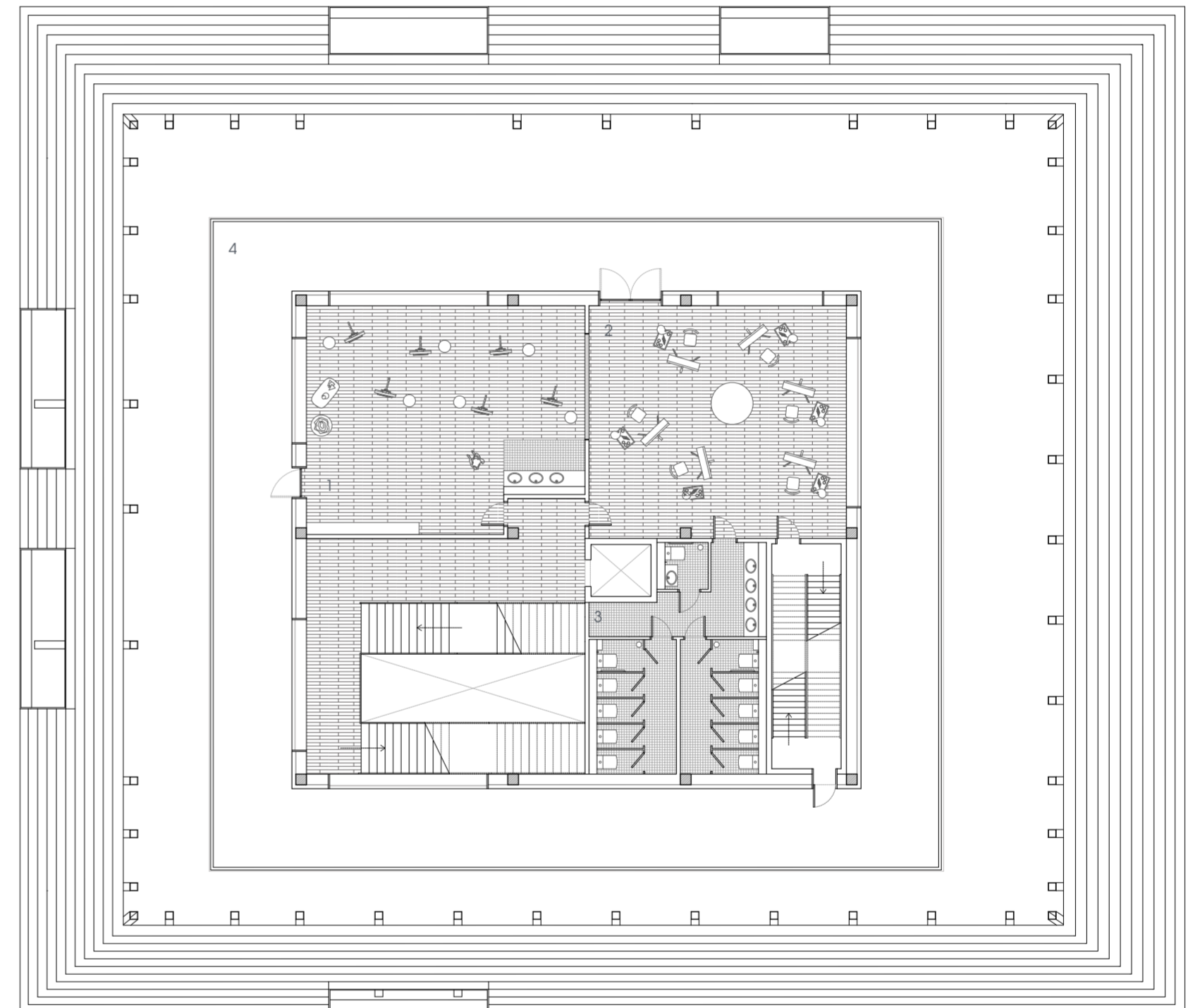


3rd floor



- 1 - cooking workshop
- 2 - semi-open terrace & event space

4th floor



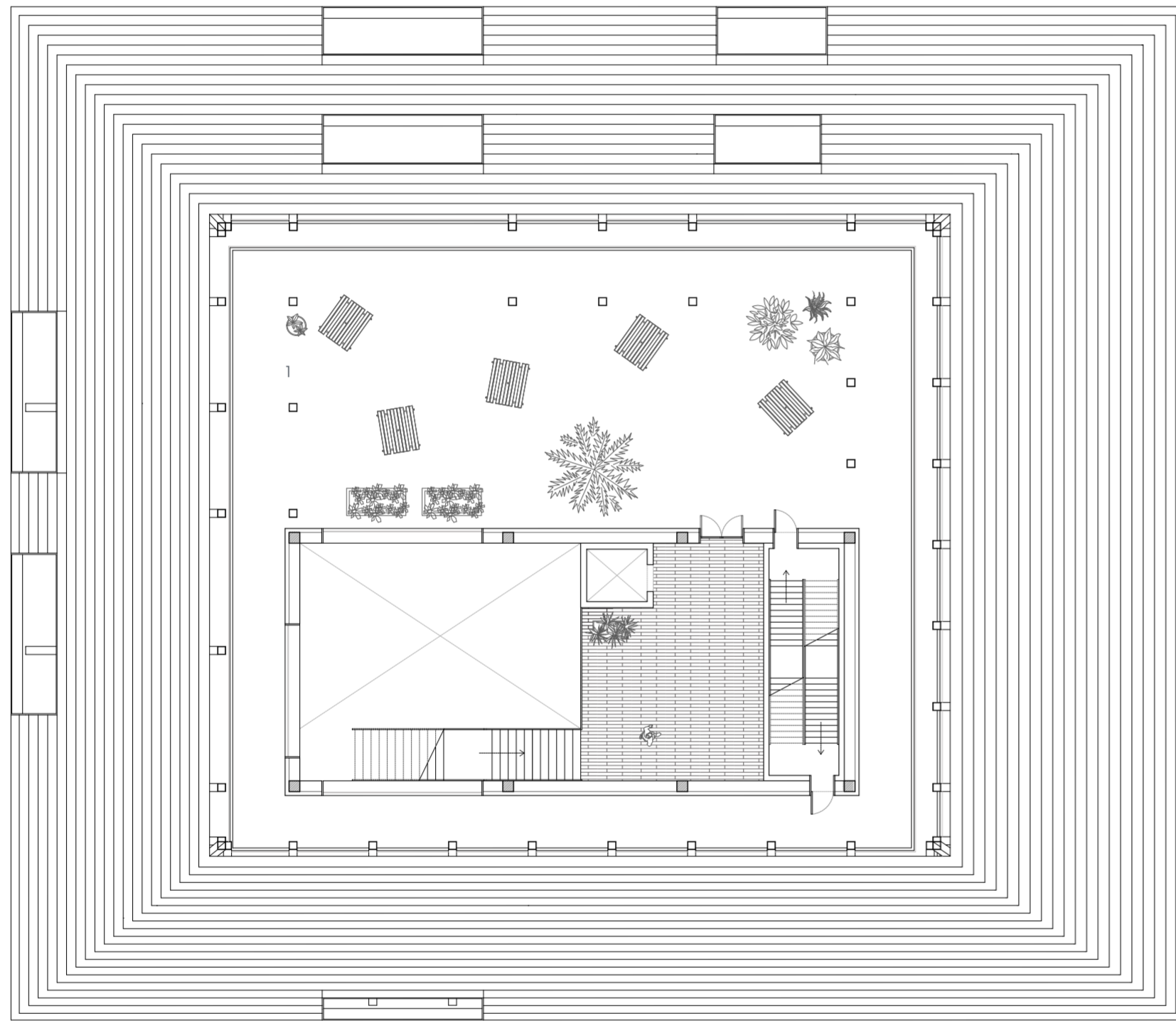
- 1 - art studio
- 2 - crafts studio
- 3 - wc
- 4 - balcony



upper floor plans

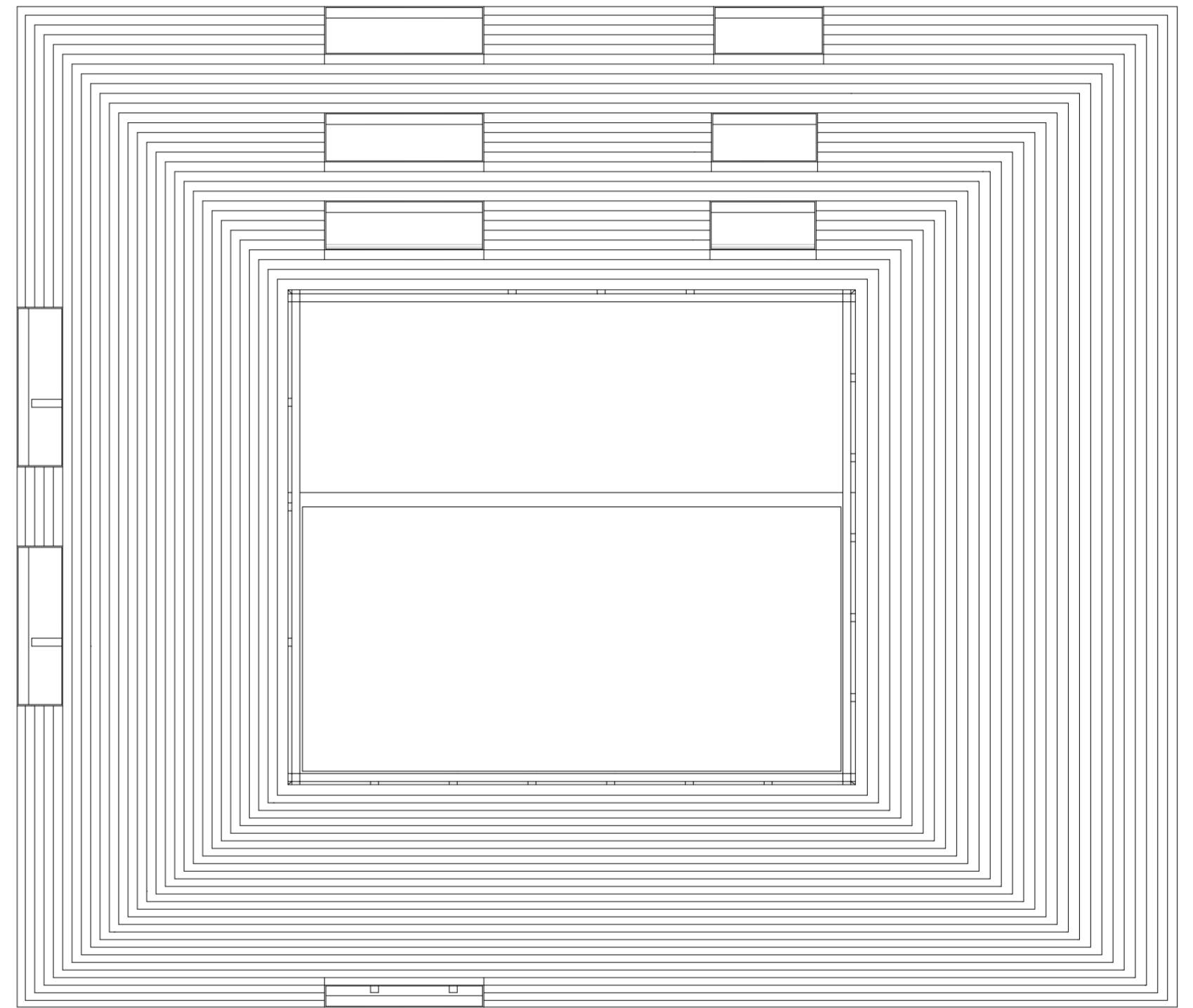
scale 1:200 @A2

5th floor



1 - roof top garden

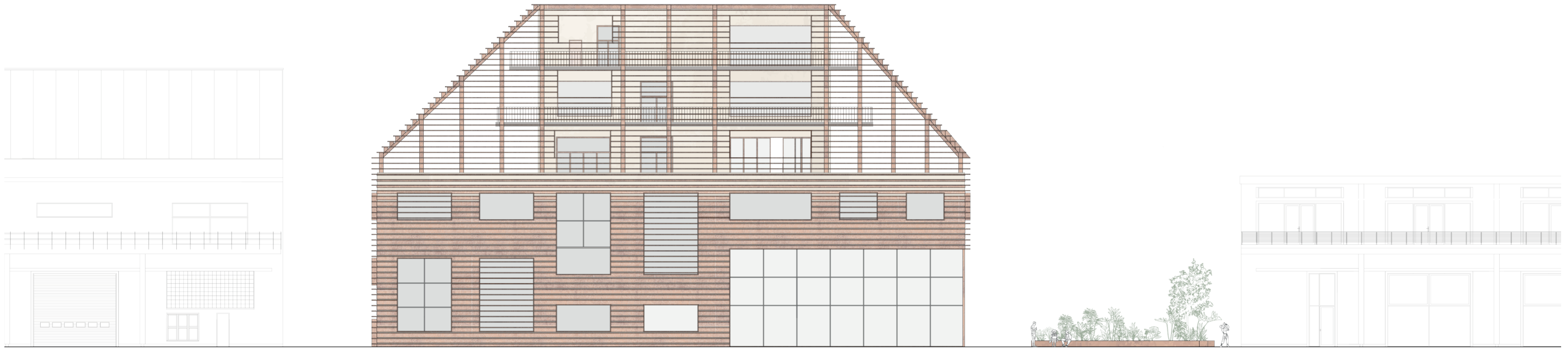
roof top



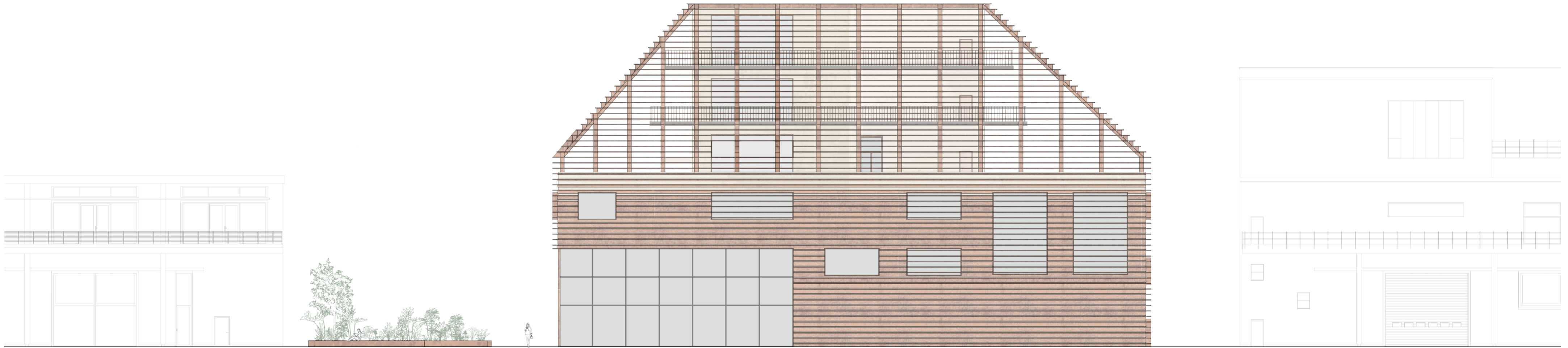
elevations

scale 1:200 @A2

facing harbour  
north-east



facing residential blocks  
south-west



scale bar 1:200





05

swimming pool (ground floor)



06

cooking workshop (3rd floor)



