

I am, You Fearful One **Rups Cregeen**

Bronze marine sculptures invade a tiled sanatorium bathroom. The tiles and 'calming green' allude to institutional paranoia, where dreamlike creatures adopt psychological and anthropomorphic meaning. The unauthorised invasion of a locked institutional bathroom space is unsettling. The water has drained out of the plug hole, leaving animals struggling to breathe, marooned in waterways desiccated by drought. Small samples of sea-water are captured in glass petri-dishes with the hope of starting new life.

The title is taken from Rilke's Poem *I am, You Fearful One*.

Octopus - Sandcast Bronze - 93cm x 75cm x 27cm (h)



Giant Squid - Sandcast Bronze - 90cm x 90cm x 45cm (h)



Rups Cregeen
07827947567
rupscregeen@me.com

Instagram: [@rupscregeen](https://www.instagram.com/rupscregeen)
www.rupscregeen.co.uk

Squid (Yellow Droplet) - Sandcast Bronze - 34m x 21cm x 17cm (h)



Urchin (Pink Droplet) - Sandcast Bronze - 26cm x 26cm x 22cm (h)



The critter series examines the symbiotic relationship of animals in the ocean (such as the cleaner shrimp). The critter's strength lies in their co-dependence and mutual supportive. Their spines project aggression, but this is only to overcome their fear and anxiety and to protect their peaceful, gentle hearts.

Reef Critter - Sandcast Bronze - 20cm x 27cm x 37cm (h)



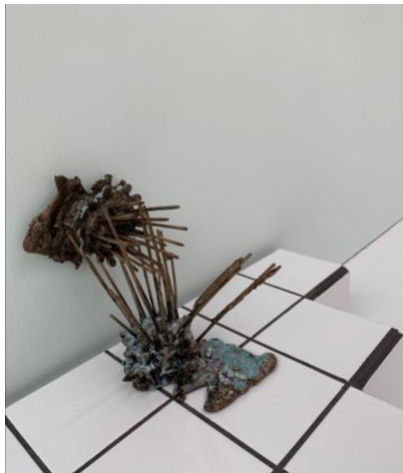
Blow Hole Critter - Sandcast Bronze - 15cm x 20cm x 27cm (h)



Rippled Critter - Sandcast Bronze - 27cm x 24cm x 24cm (h)



Guano Critter - Sandcast Bronze - 23cm x 19cm x 30cm (h)



Glass Petri-Dish and Yellow Tap - Hand Blown Glass Form containing sea-water, Tap - 27cm x 24cm x 24cm (h)



Petri-Dish Urchin - Sandcast Bronze and Hand-Blown-Glass Bubble, Sea Water 30cm x 30cm x 27cm (h)



Le Braye Rock Cast on Skittery Legs - Sandcast Bronze with Silicone 66cm x 16cm x 20cm (h)



"Perhaps Everything that is terrifying is deep down a helpless thing that needs our help."

Letters to a Young Poet, Rainer Maria Rilke