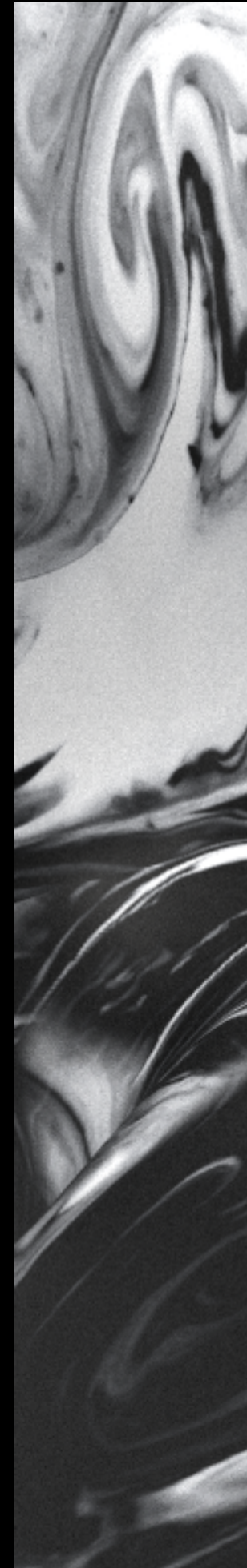


I MM COLLECTION



Lax Low
2216329



CONCEPT

4 Main Factors of Consideration

- Subject of Interest
- Area of specialisation
- Target Audience
- Industry





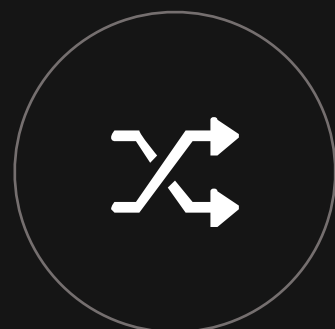
Aim

Create a collection that incorporates characteristics of activewear while upholding the refinement of luxury menswear, encouraging users to be more conscious of their movements while wearing the garments.



Issue

Conventional work attire has proven to be restrictive and inconvenient, particularly in the context of physical activities.



Approach

Examine clothing within the realm of luxury, along with garments designed for movement. Merge elements of activewear with the elegance of luxury menswear while also playing with the concept of juxtaposing liberating and constraining elements.

COLLECTION

Foreword

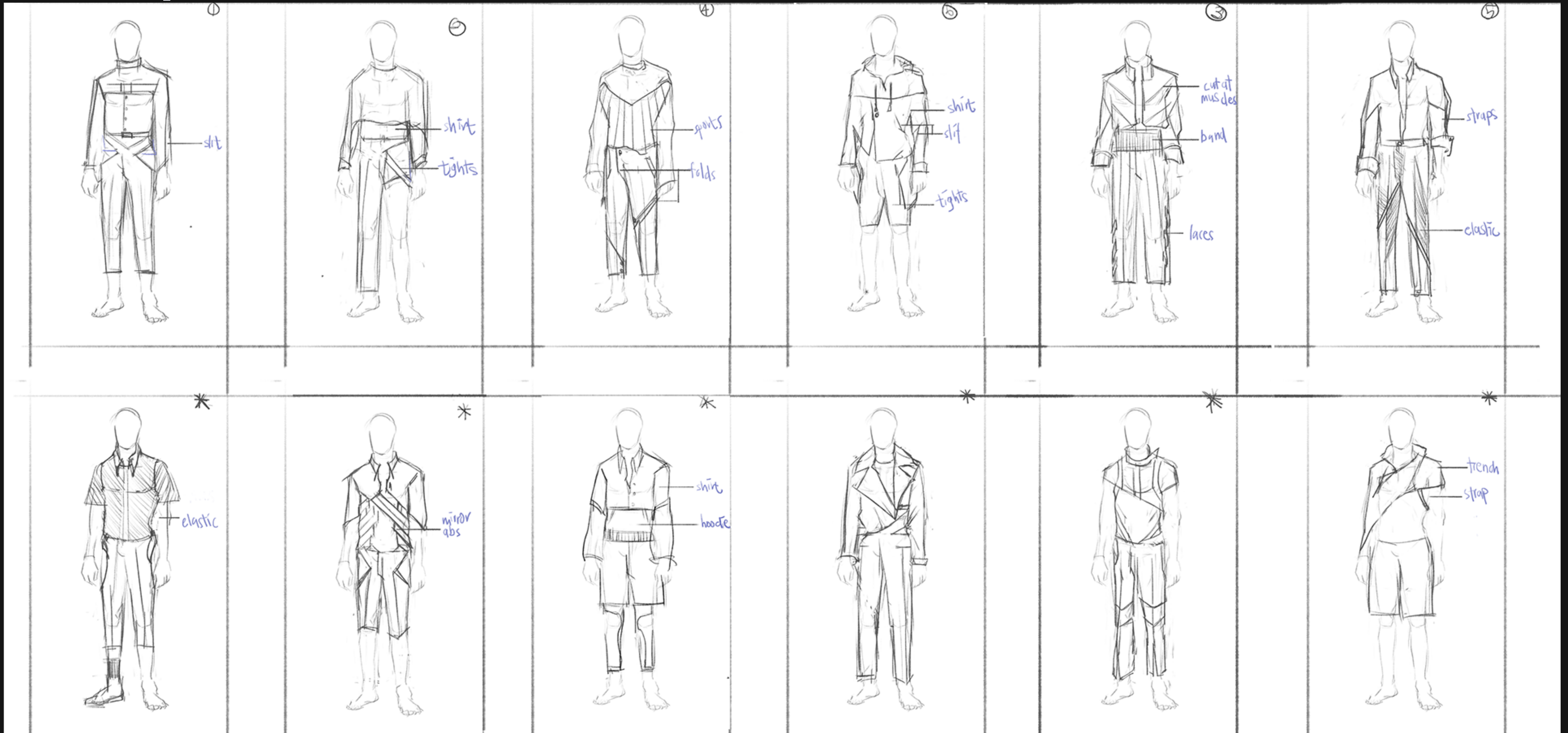
Accelerated by the pandemic a few years ago, the fashion landscape has gradually shifted away from traditional workwear, favouring garments that seamlessly transition between professional settings and other activities, eliminating the inconvenience of frequent changes. This project endeavours to craft a collection that challenges the conventional boundaries separating luxury menswear from activewear, thereby bridging this gap. The central focus of this endeavour lies in creating a three-dimensional collection as fashion continues its expansion into the digital realm, applying these digital skills to pertinent segments of the industry. The collection strives to integrate the attributes of activewear while preserving the elegance synonymous with luxury menswear. This, in turn, empowers wearers to be acutely mindful of their freedom of movement within these attire choices.

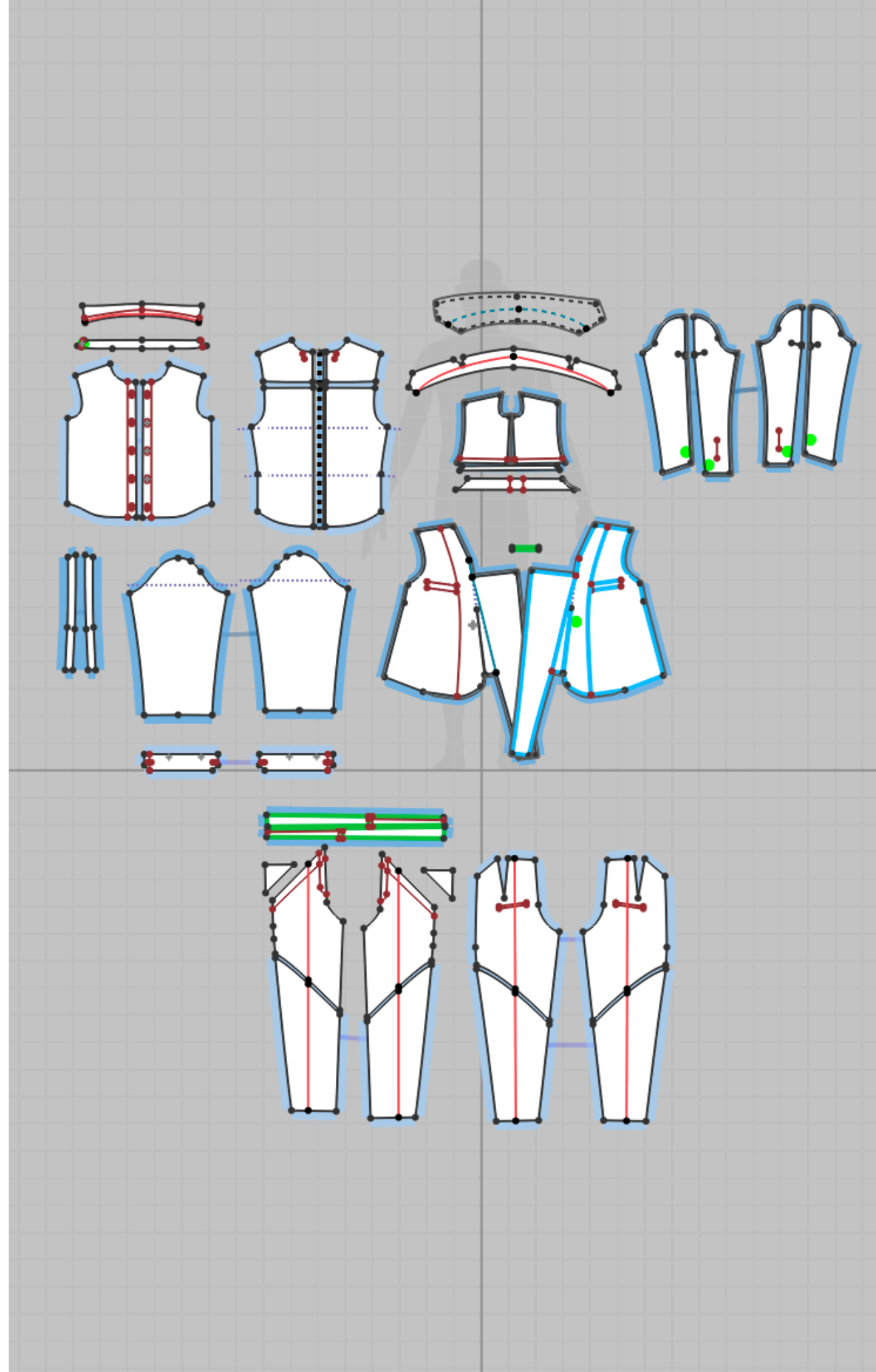
Design

06

Exploration of Silhouettes

Although I initially commenced with a dozen, I've made the decision to reduce the number to six, primarily driven by the constraints of time.





Patterns

3D Silhouette



CONCEPT

“Reverse” suit

The sensation of discomfort arises when an outfit is inadvertently worn in a reversed orientation. Additionally, this ensemble plays with the concept of limiting one's mobility.

TURNAROUND



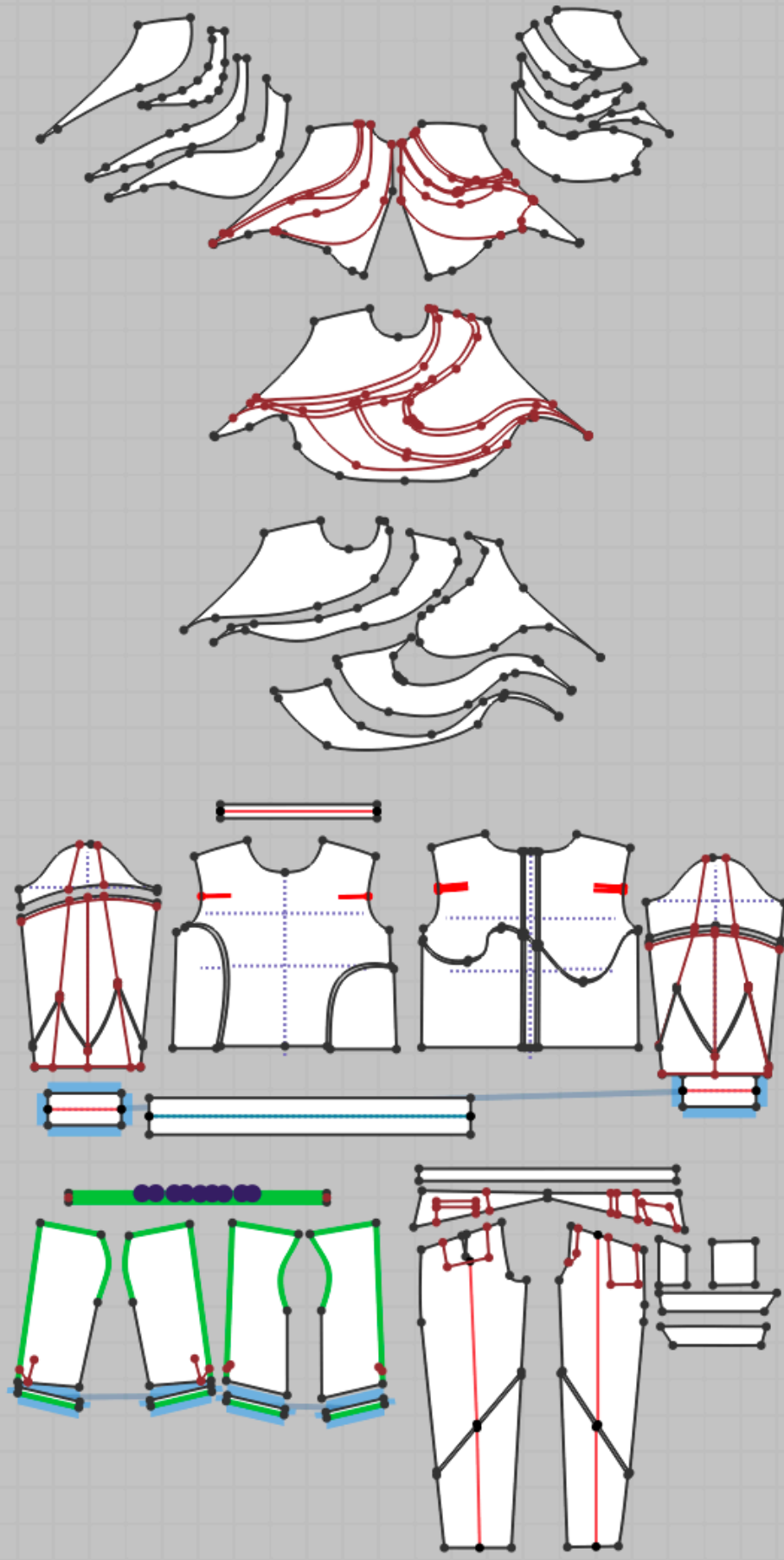
SIDE

BACK

3/4

FRONT

Creative Designers



3D Silhouette

Patterns

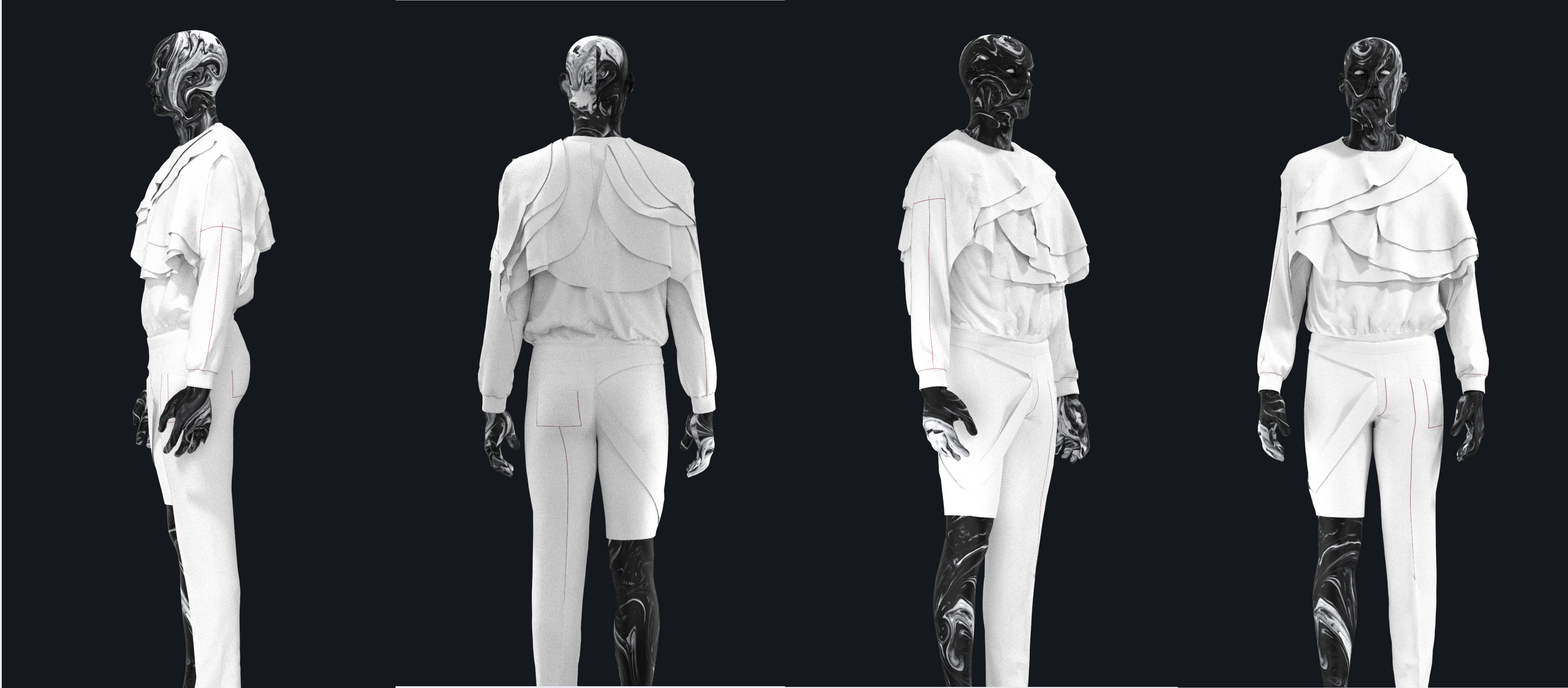


CONCEPT

Layering frills

The upper part replicates the structure of the human anatomy, mirroring the way muscles overlap and accumulate in layers.

TURNAROUND



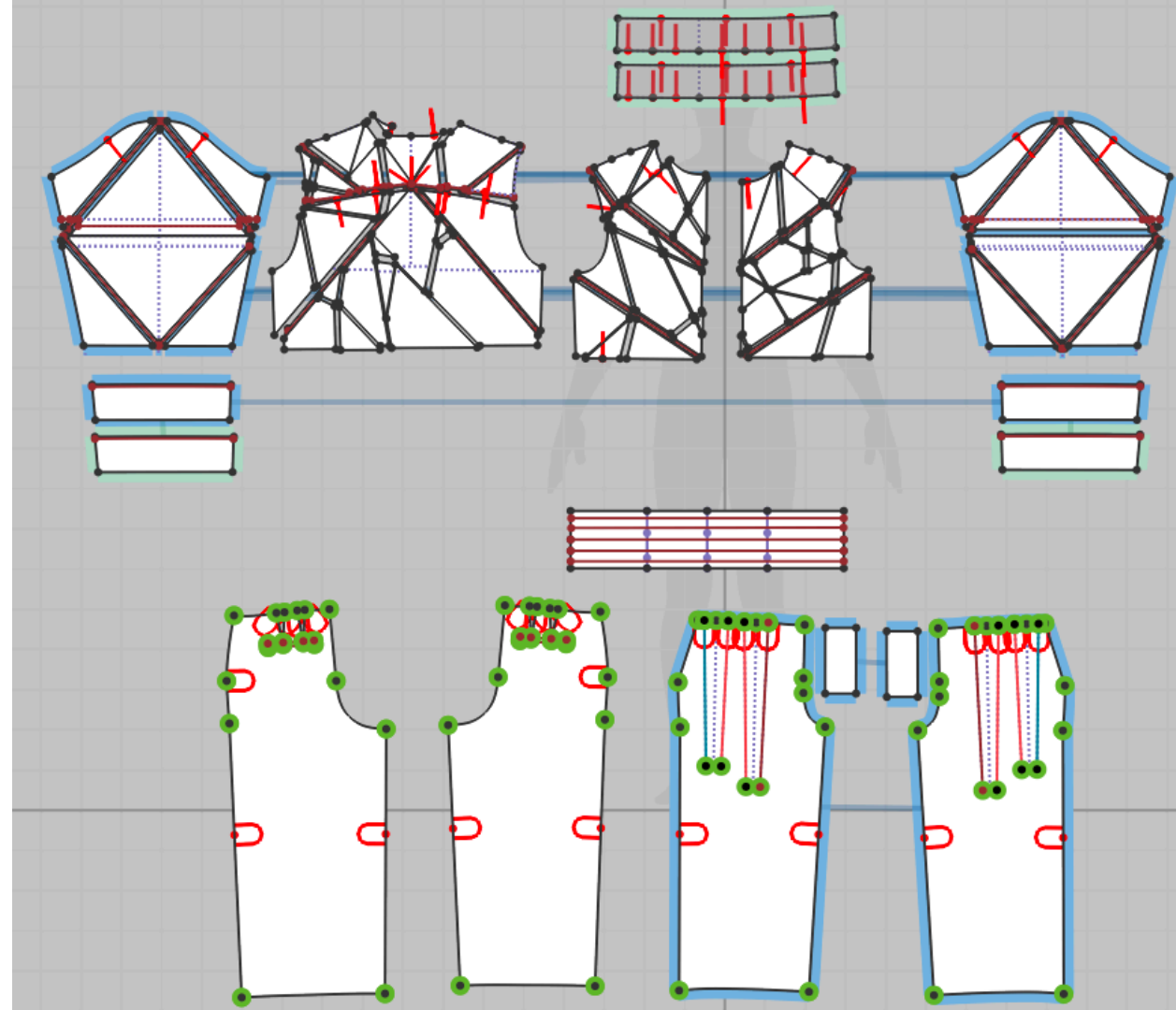
SIDE

BACK

3/4

FRONT

Creative Designers



Patterns

3D Silhouette

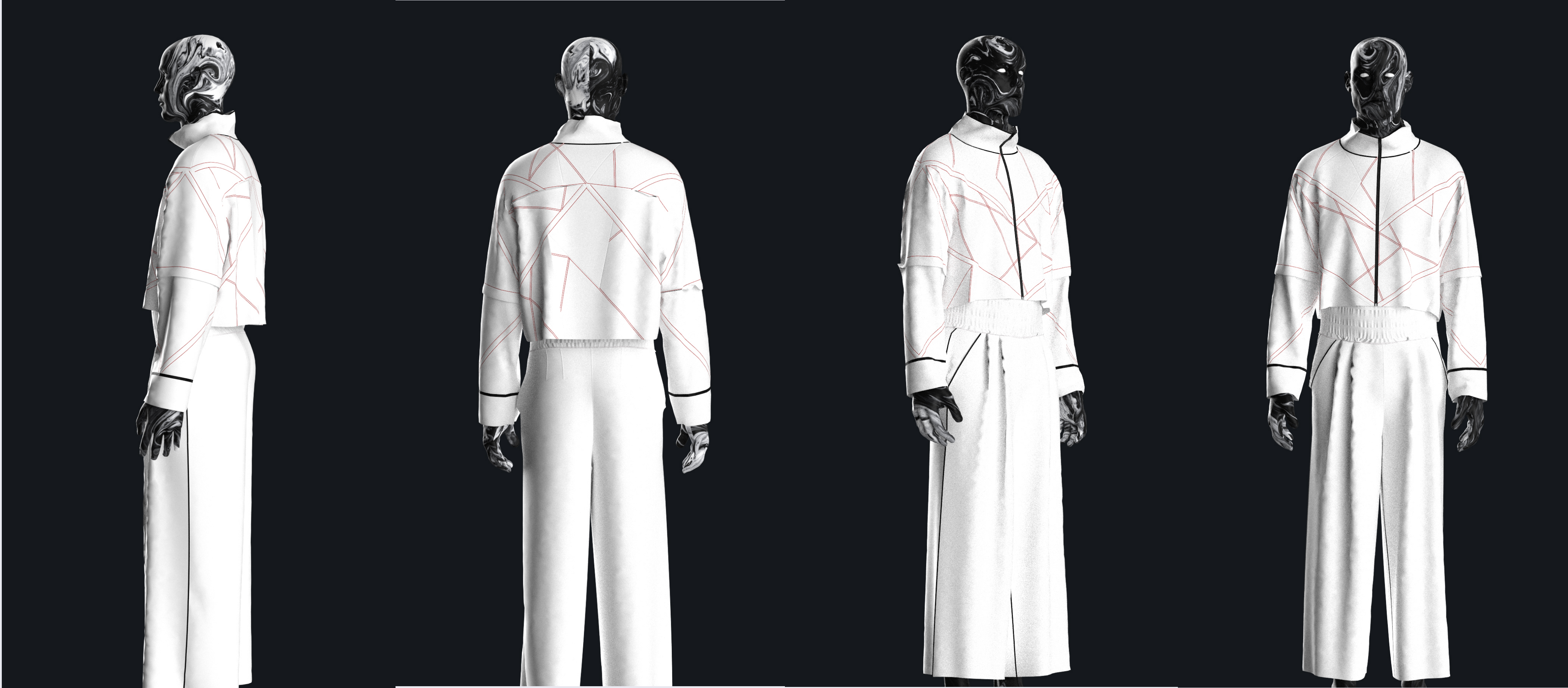


CONCEPT

F.M. 10 lignes

The jacket pattern is designed after Francois Morello, one of the prominent artist in the Op Arts field and one of his art work which toys with perception.

TURNAROUND



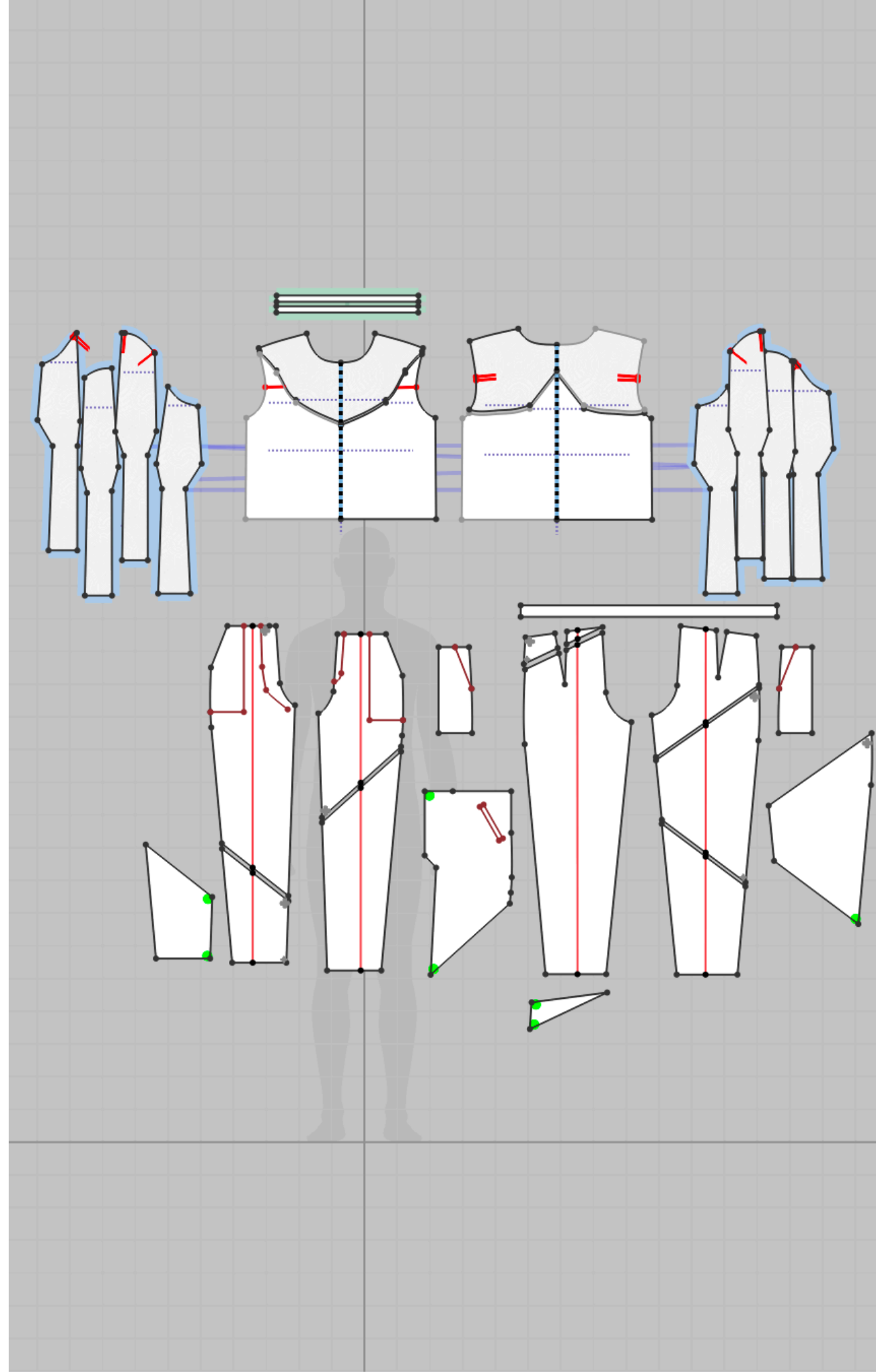
SIDE

BACK

3/4

FRONT

Creative Designers



Patterns

3D Silhouette

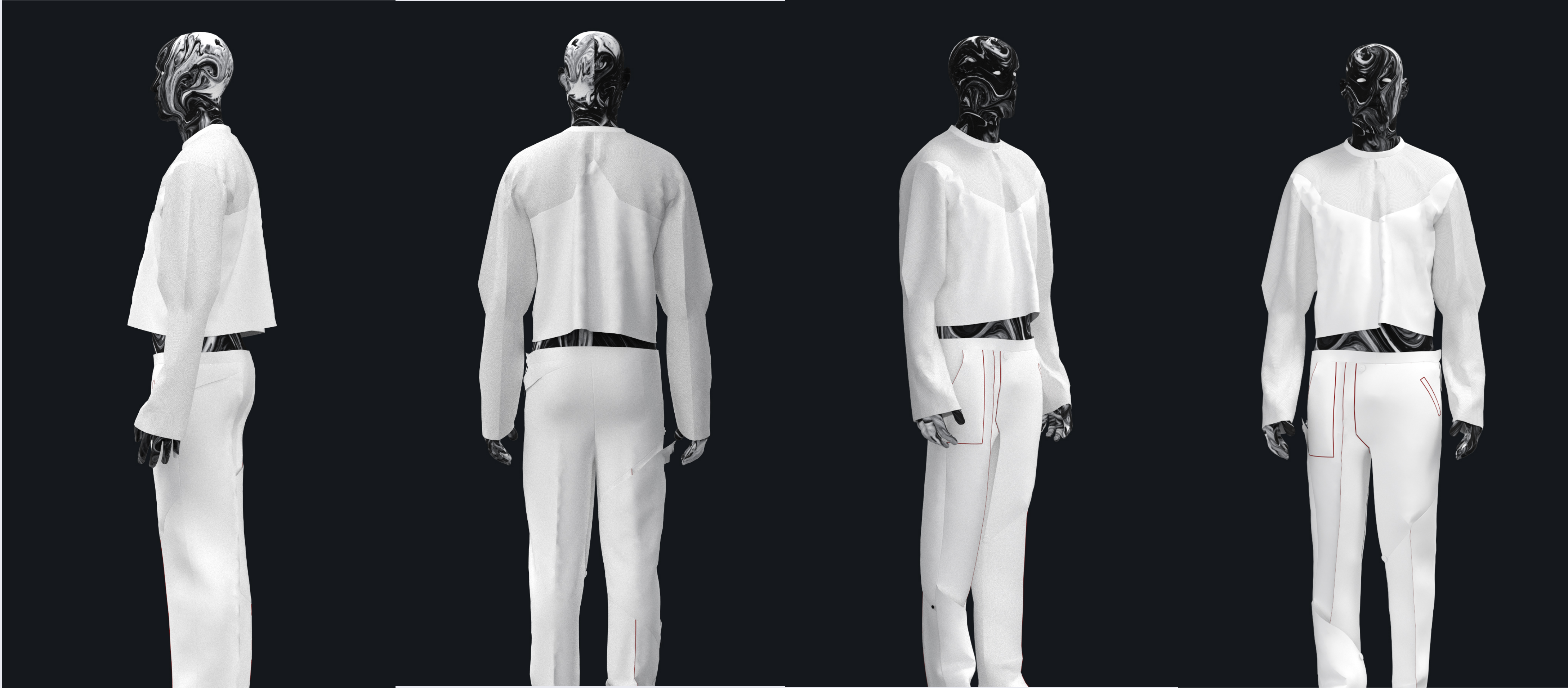


CONCEPT

Puffed Sleeves

The sleeves are thoughtfully crafted with additional space to accommodate elbow movement. Meanwhile, the flaps on the pants are strategically designed to enhance breathability.

TURNAROUND

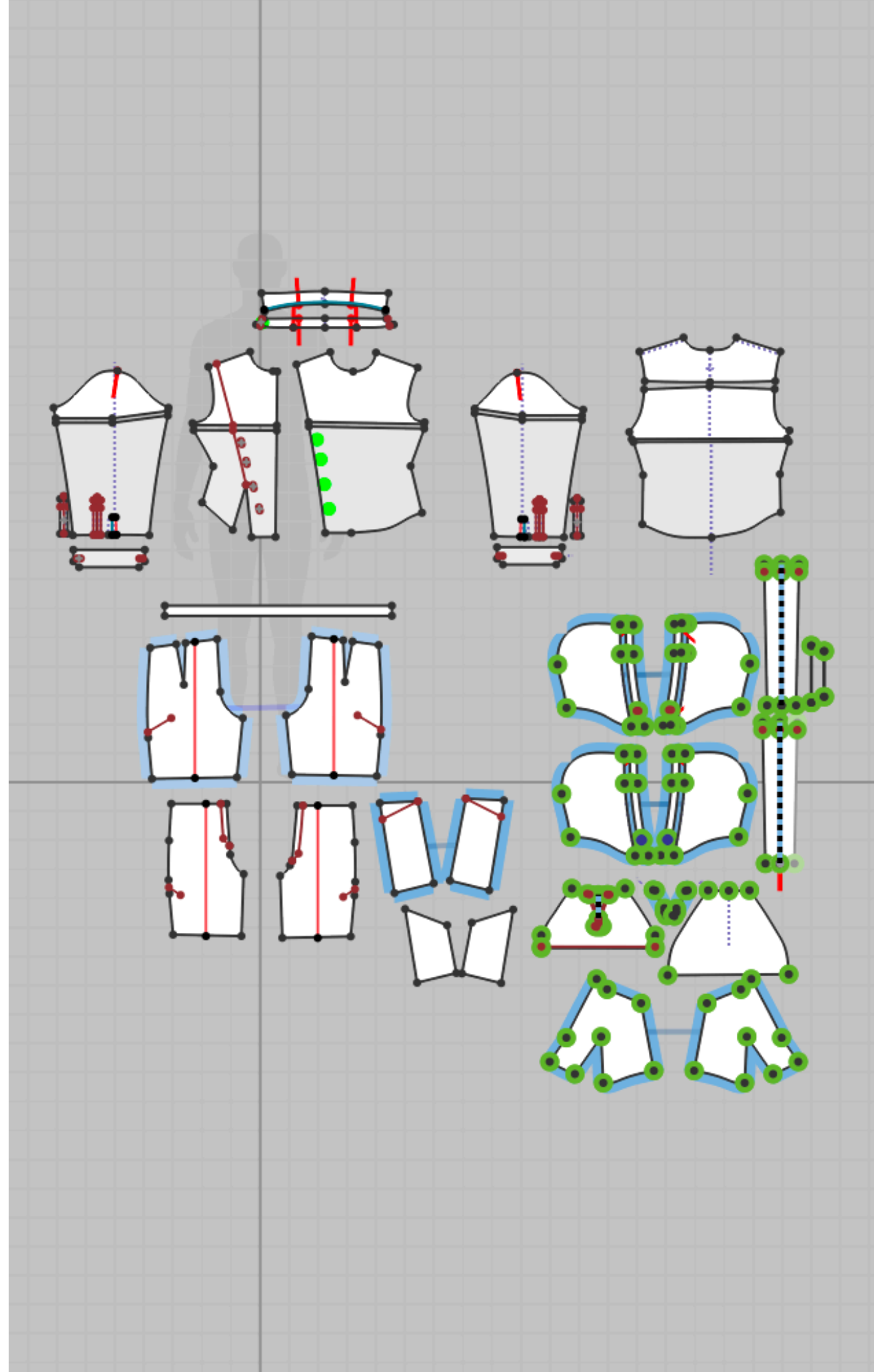


SIDE

BACK

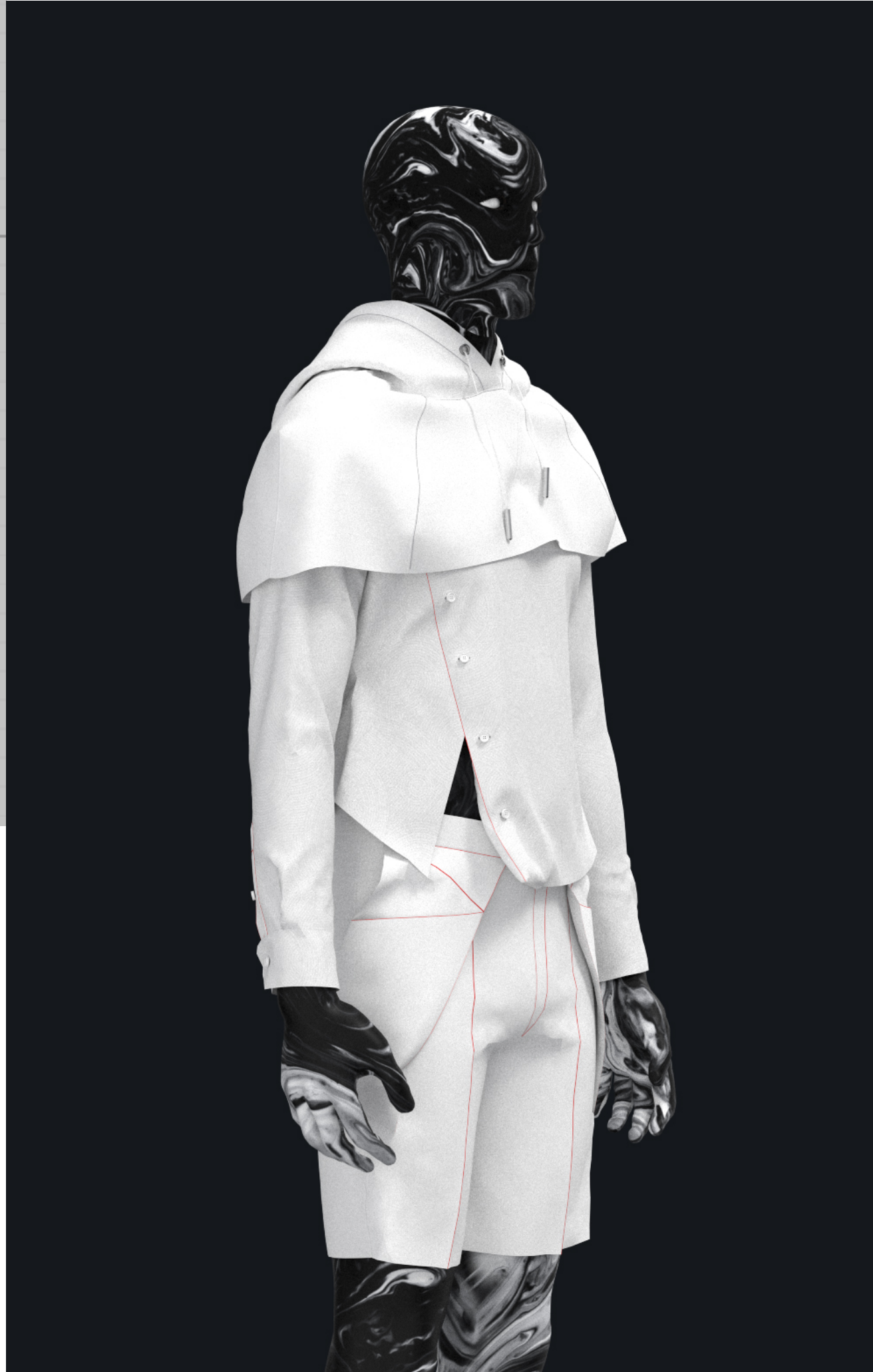
3/4

FRONT



3D Silhouette

Patterns



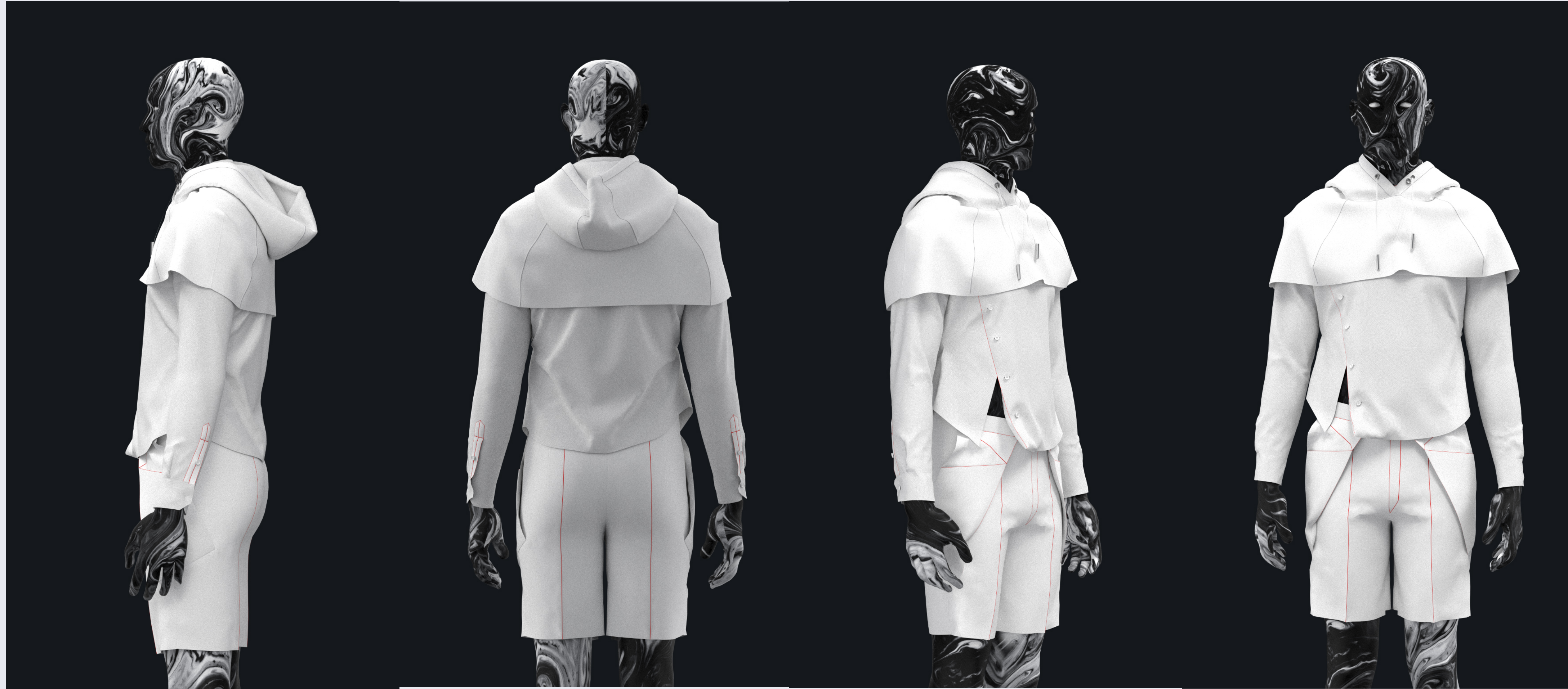
CONCEPT

Hooded Shirt

This ensemble is intentionally created to contrast the freedom of movement offered by a hoodie with the constriction of a shirt. Another distinctive feature is the placement of pockets, situated on the exterior of the shorts instead of the typical interior location.

TURNAROUND

Creative Designers

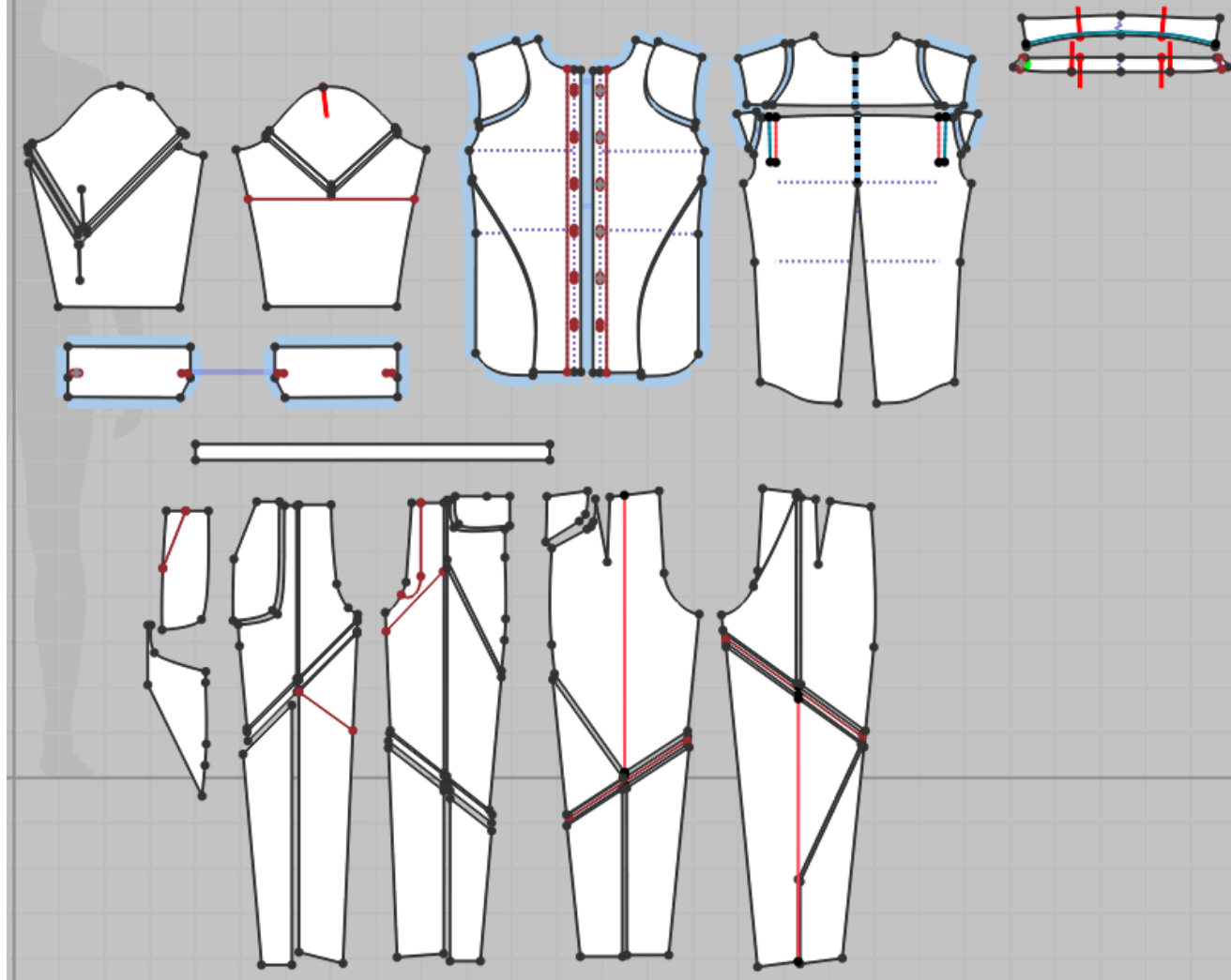


SIDE

BACK

3/4

FRONT



Patterns

3D Silhouette

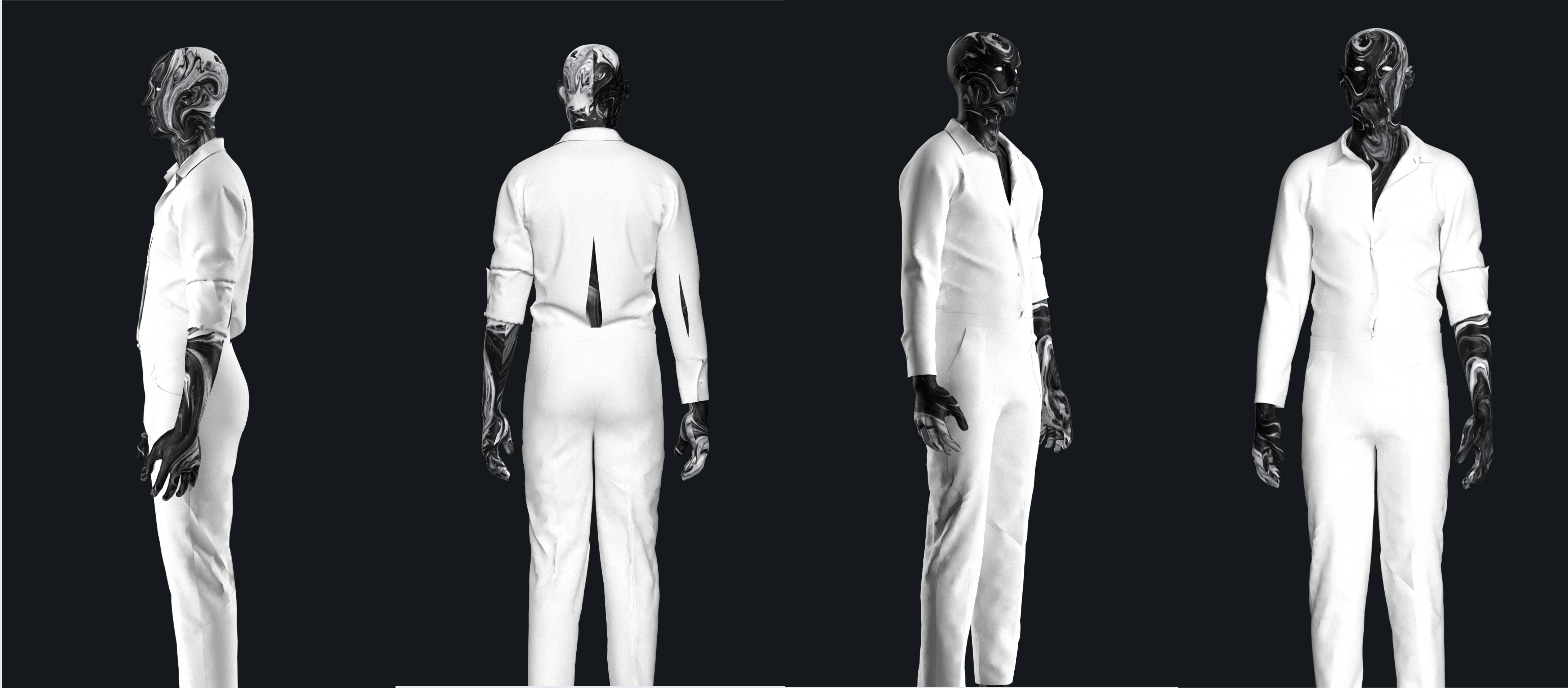


CONCEPT

F.M. Pants

The trousers experiment with ribbed fabric, combined with patterns akin to those on the earlier jacket, creating the illusion of musculature.

TURNAROUND



SIDE

BACK

3/4

FRONT



REVERSE SUIT

LAYERING FRILLS



Outfit



F.M. JACKET

PUFF SLEEVES



Outfit

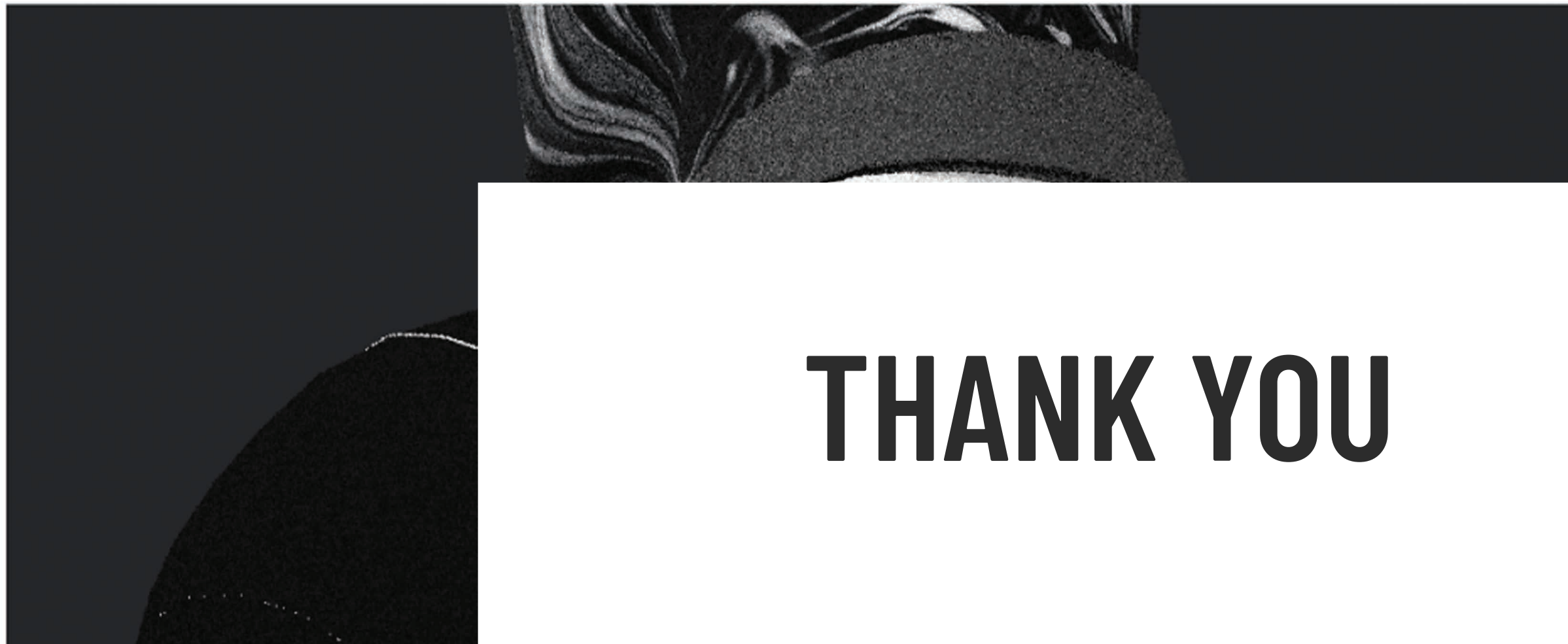
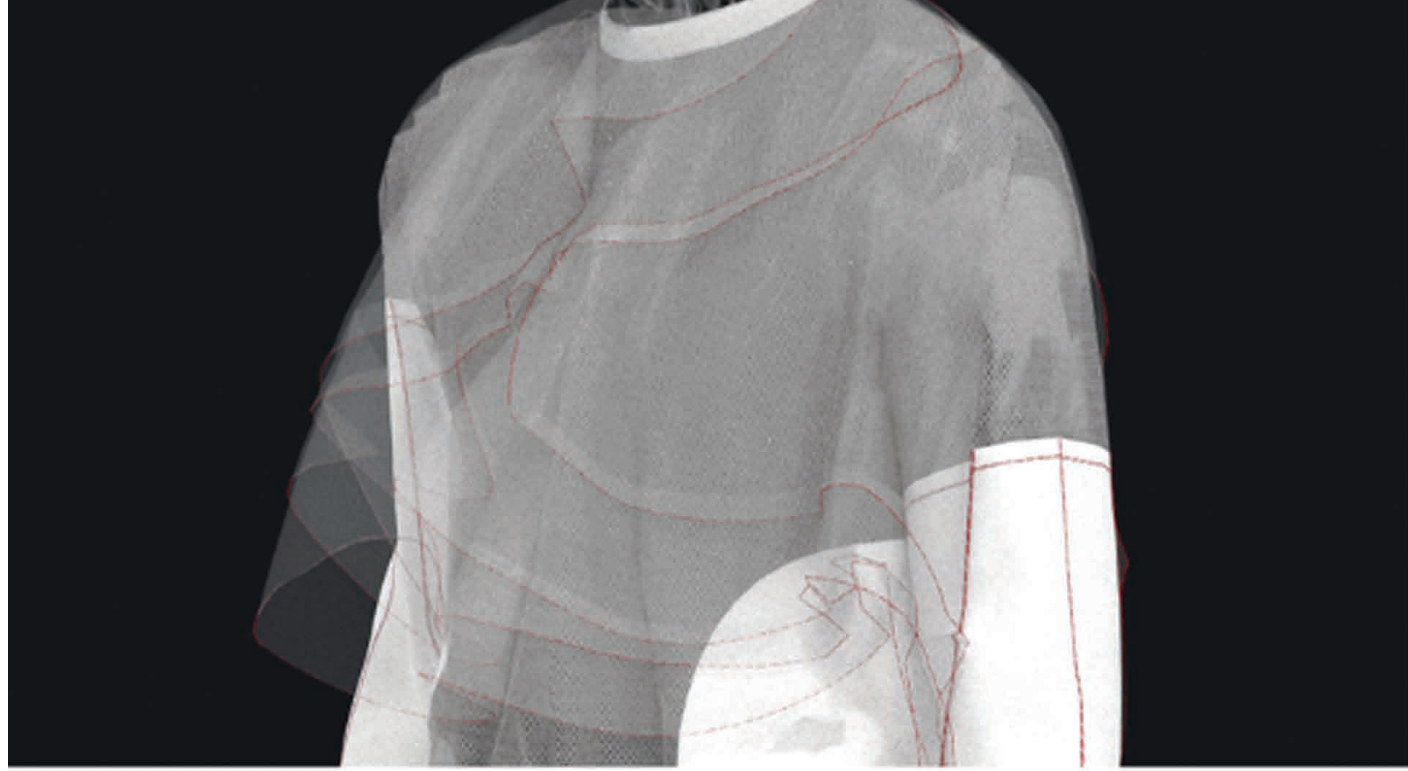


HOODED SHIRT

FM PANTS



Outfit



m e n s w e a r