

PREZA LAMA
2415913

MA ARCHITECTURE

Refining My Vision

- Focus on creating spaces that evoke feelings of calm and connection to nature.
- Incorporate cultural elements to make designs meaningful and relatable.
- Transform underutilized, neglected areas through human-centered design that respects and harmonizes with the environment.

Refining My Goals

- Nature-Based Retreats:
Design spaces that promote solitude, mindfulness, and a deeper awareness of surroundings.
- Urban Parks & Green Spaces:
Create multifunctional, inclusive environments for relaxation and community interaction. Design flexible spaces that grow and adapt.

Design Strategies

Keywords- Nature’s fragmentation, Organic flow in urban rigidity
Earth revealing stories

Research Focus

How can urban parks be designed to provide safe and accessible spaces for people to relax and reconnect with nature using a human-centered approach that respects the environment?



What design strategies can be used to transform underutilized or wasted spaces into nature-based retreats that promote mindfulness and well-being?

How can architectural design help people disconnect from modern technology and foster a deeper connection with nature?

Location & Accessibility

- Evaluate pedestrian, bike, and public transport connections.
- Consider proximity to residential zones, schools, and community centers.
- Identify physical or social barriers to access and inclusion.

Public Perception

- Assess how the space is currently viewed: safe, unsafe, ignored, or misused.

Mapping and Documentation

- Create mood boards, Documentation of the experiment and analysis

Understand the Social & Environment Context

- Study historical and cultural significance observation

THE SITE

- Identify & selection of the site.
- Conduct field visits to wasted pubic space in towns like Rochester, Sittingbourne, Chatham and Faversham.
- Map out accesibility, existing infrastructure and environment factors.



SITE, USER & LOCATION

- Looking for underutilized space in **Rochester, Sittingbourne, Chatham, or Faversham** that can be repurposed.
- This could be an old industrial site, a neglected park, or unused urban land.
- Users: Understanding the local community, who will use the space, their needs, and how they currently interact with public spaces.
- Connectivity: How accessible the site is via public transport, walking, and cycling, ensuring inclusivity.

Important Things to Look For?

Historical and Cultural Context

Natural Features

Community Engagement

Regeneration

Things to avoid or manage?

Gentrification & Social Exclusion

Overdevelopment
-to maintain an organic, human-scale feel

Environmental Disruptions

Maintenance & Longevity

FUNCTION OF THAT AREA

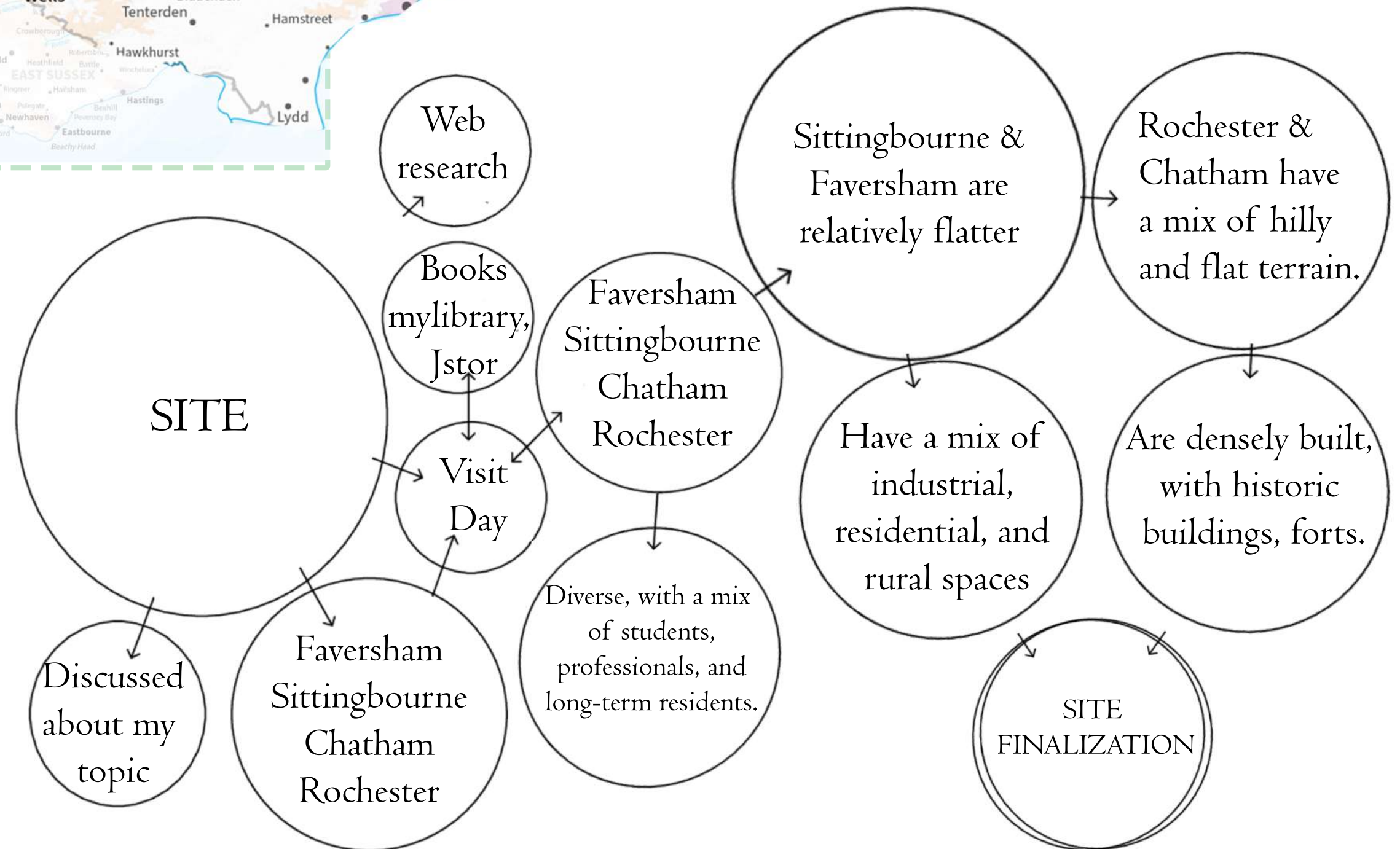
Redefining of the area

new identify of the area

Community Use

Self-Initiative participation

DOCUMENTATION OF PRIMARY RESEARCH





ROCHESTER

CHATHAM

SITTINGBOURNE

FAVERSHAM

Landform & Topography

have hilly terrain with elevated areas

are flatter, with low-lying areas
have post-industrial landscapes with uneven
ground, abandoned structures,

**all have railway stations with good links
to London and Kent towns.**

A mix of historic buildings

Built Environment & Architecture

have neglected or abandoned spaces,
closed-down factories, and
empty waterfront land.

Demographics & Community

Diverse, with a mix of students, professionals,
and long-term residents

More suburban/rural mix
diverse, students

Pavements in the sky in our futuristic town

Report by Catherine Dolan

A MULTIPLEX cinema, multi-storey car park, Milton Creek marina and pavements in the sky are part of a radical new plan for Sittingbourne.

The town, famed for having one of the longest High Streets in Britain, could be changed out of all recognition, if planners have their way.

A team of consultants have come up with a spectacular 'vision' which will see the shopping centre and create more green spaces. The scheme was given its first public airing in front of consultants at the town's annual town meeting.

A multiplex cinema, supermarket, multi-storey car park and outdoor shopping centre north of the High Street, between the railway station and the Forum shopping centre. The new complex would be linked to the Forum by an elevated walkway over St Michael's Road. The supermarket and car park would be built over the station's existing car park.

A new all-ages shopping centre performing arts complex and 'new square' in Central Avenue. The area would also become home to a new weekly market. The public will be moved from their current headquarters.

Reversing the one-way High Street and encouraging more people to live above shops to breathe life back into the town. Better use would be made of the ways leading the High Street with St Michael's Road.

Public open space with trees, benches and green to the south of the High Street to replace demolished car park.

Building on old buildings the town's churches as they become 'new squares', as a link to High Street 'landmarks' for visitors approaching the town from the east 'approach' A2 (East and West), Crown Quay Lane and Milton Road.

A new 'commercial campus' on a green between an industrial estate and a technology park — to replace the M-Bird paper mill and create improved road access to Milton Road.

Conversion of the run-down Milton Creek area into Sittingbourne's 'new' to London's Docklands with 'regeneration' projects.

The consultants say: "Any development by 'new' has to have a 'step up the ladder of success'."

The document has been put together by David McCann, Young, Brown, Tordoff, Wills. They also suggest St Michael's Road is made one-way to reduce the amount of traffic. Bicycles, cars and trucks will use the long-avenue Northern, Distribution Road. And they want that if the council does nothing the town will be subjected to potential development, the plan also will be 'cherry-picked', developments will be undertaken and problems will be left for the council.

The consultants, who were paid more than £15,000 to compile the report, say that if the council fails to act quickly people will lose confidence in the town and seek shopping and entertainment elsewhere, as most do now.

The new vision for Sittingbourne will go on about the Forum shopping centre, next to the railway station, and the 'new square' in Central Avenue. The consultants, who were paid more than £15,000 to compile the report, say that if the council fails to act quickly people will lose confidence in the town and seek shopping and entertainment elsewhere, as most do now.

This has to be everybody's vision. It must belong to the community of Sittingbourne. I will be writing to businesses for their views but hope as many people as possible come forward with their views, comments and suggestions.

After the consultation period there will be a more detailed report taking all views into account. The final report will be produced about the middle of next year.

The vision document can be seen on the local Council website, www.sittingbourne.gov.uk

The way we see: The old town High Street more become a meadow, covered by 'new' has to have a 'step up the ladder of success'."

The document has been put together by David McCann, Young, Brown, Tordoff, Wills. They also suggest St Michael's Road is made one-way to reduce the amount of traffic. Bicycles, cars and trucks will use the long-avenue Northern, Distribution Road. And they want that if the council does nothing the town will be subjected to potential development, the plan also will be 'cherry-picked', developments will be undertaken and problems will be left for the council.

The consultants, who were paid more than £15,000 to compile the report, say that if the council fails to act quickly people will lose confidence in the town and seek shopping and entertainment elsewhere, as most do now.

The new vision for Sittingbourne will go on about the Forum shopping centre, next to the railway station, and the 'new square' in Central Avenue. The consultants, who were paid more than £15,000 to compile the report, say that if the council fails to act quickly people will lose confidence in the town and seek shopping and entertainment elsewhere, as most do now.

Phase 1B – The feedback stage

Summarises the consultation methodology and response from the various workshops and exhibitions, which were structured to seek people's views on the analysis stage of the project and the outline proposals. While trying to explain the nature of the problems, we attempted to break them down into more understandable elements in layman's terms. This challenged our assumptions on the nature of the problems, highlighted omissions and prioritised the solutions. The analysis of this data forms the basis of the principal objective - to formulate the brief for the masterplan.

Summary of the Consultation Exercise

We believe that the consultation exceeded even our hopes, particularly in relation to the input from young people. Over 300 people attended the High Street drop-in workshops, many taking time to fill in relatively detailed comments in the record book, and even more commenting at the library exhibition. Despite scepticism when the stage one report was published, the response from teenagers was excellent. Although due mainly to interest shown by the school teachers, the fact that the town centre study is part of the national curriculum at GCSE level illustrates how critical educationalists consider town centres to be. To date over 120 young students from 13-17 have participated. More schools have requested workshops and attendees at the consultation have suggested other groups who would like an input, such as the Research Centre and the Access Group. Rather than prolong the consultation stage, these should form part of future detailed design consultation with other groups.

Almost all attendees at the workshops participated in the comments procedure by registering their responses to the questions raised and the detailed analysis is listed in the full report. We were, however, pleased that people took on average 30 minutes to read the exhibition and record their views.



The Workshops

The chosen format was an exhibition of 10 A1 printed panels mounted on exhibition panels in a logical sequence, starting with background scene setting, followed by comments on more detailed specific problems and finally outline proposals.

Each panel contained a statement deliberately designed to stimulate a reaction. To encourage interaction the qualitative responses to questions were recorded by means of coloured dots which had the advantage of encouraging responsive decision making and anonymity if so desired.

It also showed how others were replying, and although we thought this might colour people's views, from observation and discussion at the time, it did not appear to. In fact respondents were interested to see how others were reacting, and would not have happened in a question and answer session.

The size, location and visibility of the exhibition was critical to the success of the exercise and the offer of a High Street shop, fully glazed on the ground floor, was ideal.

This format was adapted to suit the schools where the boards were used as a backdrop and the project was then encouraged to provide into special interest clusters to examine aspects of the town loosely based on the topics in the presentation.

Due to space constraints on other venues the panels were printed at A3. The comments book was placed in the shop unit workshops and each venue to allow respondents to see earlier comments.

Venues

Jarman's Law Centre - The shop was staffed with a minimum of three members of the team, which was adequate for the numbers of people who attended; generally 8 at any one time.

Highsted School - The project was seen as an opportunity for students to think more laterally about the built environment, particularly as it affects teenagers.

Sittingbourne Community College - Since they were studying tourism the role of the town centre was very relevant to them.

Sittingbourne Central Library - The comments book was left and with the self-adhesive dots attracted attention from a wider audience of people who were unable to get to the drop-in workshops in office hours, children and visitors.

Other consultations
Sittingbourne Retail Association
Internet
Sittingbourne Access Group
Kent County Council

SITTINGBOURNE IS CHANGING

MORE PEOPLE
On current trends between 1981 and 2006 the town will have grown by a third.

INDUSTRY
The type of jobs are changing with more small businesses, higher skilled jobs and more diversification.

TRAFFIC
Car ownership is increasing and there is more heavy transport going to the industrial areas.

Pavements in the sky in our futuristic town

Have your say on the way you see the town changing

DROP-IN SHOP 6&7th DECEMBER BELL SHOPPING CENTRE

Neglected Community Needs

Social Context Investigated

Loss of Cultural Identity

Lack of Accessible, Inclusive Public Spaces

Disconnection from Nature

Why This Specific Use? What Will It Change?

I propose to design a nature-integrated urban retreat and cultural hub in a wasted public space.

My programme addresses

- Reconnects People with Nature
- Revitalises Community Engagement
- Promotes Well-being
- Preserves Cultural Identity

SITTINGBOURNE IS CHANGING

MORE PEOPLE
On current trends between 1981 and 2006 the town will have grown by a third.

INDUSTRY
The type of jobs are changing with more small businesses, higher skilled jobs and more diversification.

TRAFFIC
Car ownership is increasing and there is more heavy transport going to the industrial areas.

Pavements in the sky in our futuristic town

Have your say on the way you see the town changing

DROP-IN SHOP 6&7th DECEMBER BELL SHOPPING CENTRE

- Green Spaces
- Mindfulness & Wellness Zones helping people disconnect from technology and reconnect with themselves.
- Community Interaction Areas
- Educational & Creative Spaces



Strategic Location

Regeneration Priority :

- It is undergoing redevelopment, making it a prime site

Connectivity :

- Well-connected by rail allowing easy access for visitors.

Proximity to Milton Creek & Country Park:

- Potential to link green infrastructure.

Environmental & Social Potential

Wasted Public Space

- The site sits near a creek, allowing for ecological restoration



- Community Engagement
Sittingbourne has a mix of families, businesses, and cultural groups who could benefit from a nature-based public space.

Economic & Cultural Revitalization

Surrounded by Retail & Leisure Areas
Meaning high foot traffic and engagement opportunities.

Potential to Boost Local Economy
Mixed-use development

My Vision

Human-Centered Design
My goal is to create a space where people disconnect from technology and reconnect with nature.

Transforming Wasted Space into
Meaningful Public Use
This aligns directly with Sittingbourne's need for better public spaces.

SITE -WHY SITTINGBOURNE?

Sittingbourne, located in Kent, England, offers a diverse architectural landscape that reflects its rich history and ongoing development.

Urban Development and Regeneration

In recent years, Sittingbourne has undergone significant regeneration aimed at revitalizing the town centre. The "Spirit of Sittingbourne" Public-Private Partnership, focuses on remodelling the town centre to create a more pedestrian-friendly environment.

Conservation Areas

The Sittingbourne High Street Conservation Area reflects the town's commitment to preserving its historical and architectural character. A Conservation Area Character Appraisal provides a detailed assessment of the area's special architectural/ historic interest, serving as a valuable resource for understanding the elements that contribute to its unique identity.

Environmental Considerations

Milton Creek Country Park the transformation of industrial and landfill sites into valuable green spaces. The park provides a 'green heart' for Sittingbourne, offering recreational opportunities and enhancing biodiversity. Its development involved extensive remediation and community engagement, highlighting the role of landscape architecture in urban regeneration.

SITE ANALYSIS



Fig: Sittingbourne



Fig: Sittingbourne Highstreet

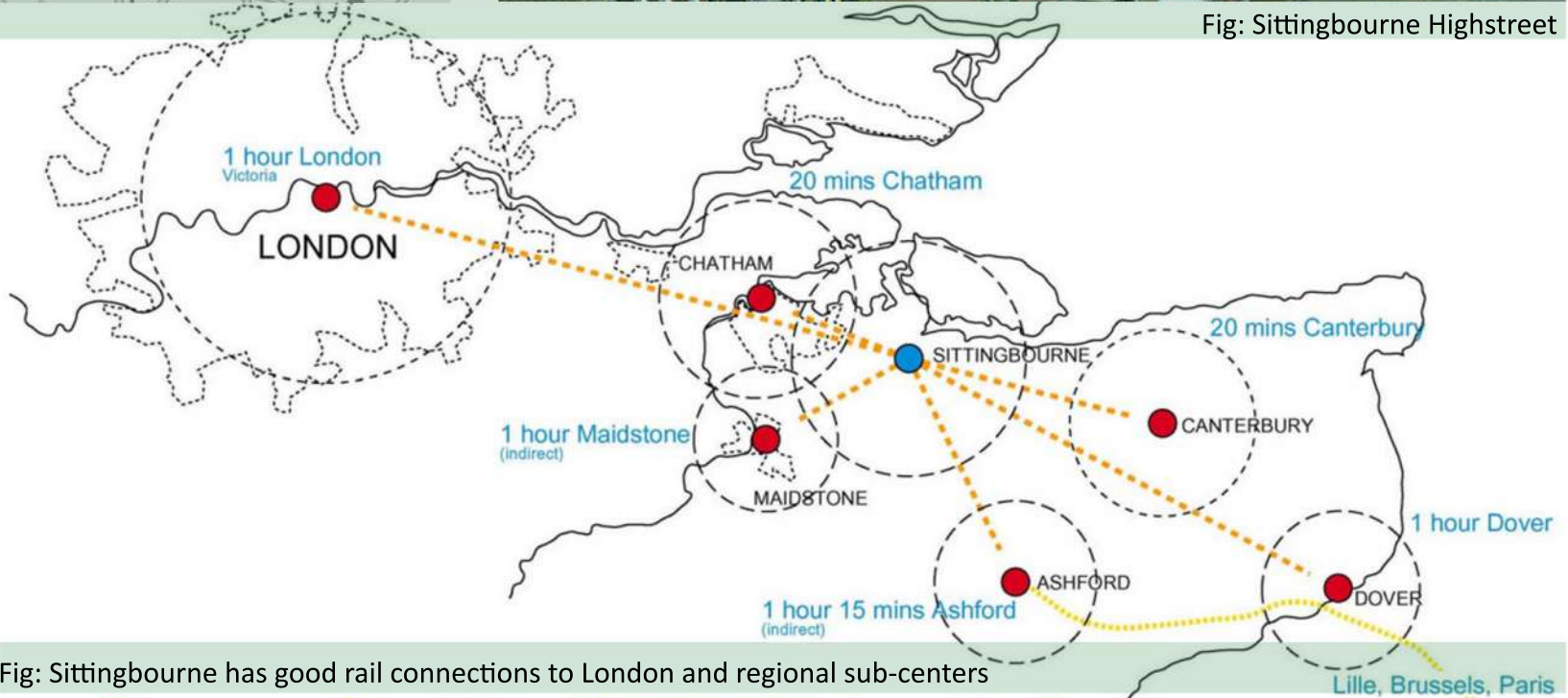


Fig: Sittingbourne has good rail connections to London and regional sub-centers

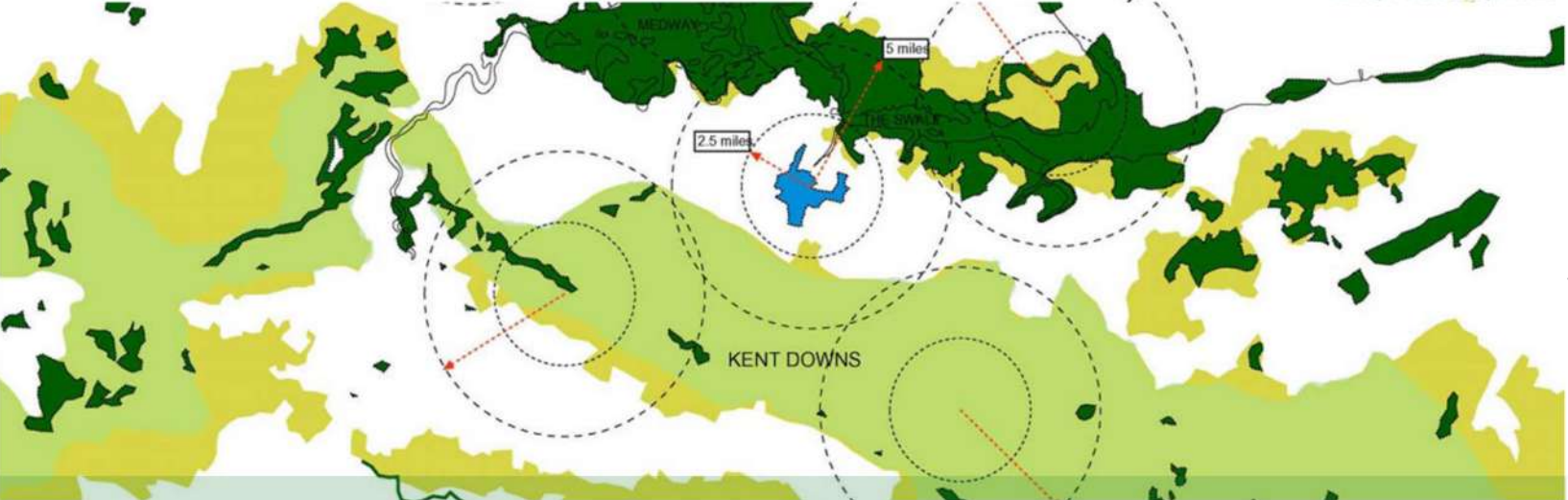


Fig: Sittingbourne is perfectly positioned to capitalise on the tourism potential of the region's ecologically rich landscape.

Ref: kent homes
Ref: swale.gov.uk/Sittingbourne_Town_Centre_Vision

Present: The "Spirit of Sittingbourne" project modernizes the town centre with new retail, leisure, and infrastructure improvements.

2019: Discovery of the Roman Watling Temple confirms the area's deep historical roots.



Roman Era (43-410 AD):
The area was part of Roman Britain, with the discovery of the Watling Temple.

c. 9th Century:
originates from "Sitting," an early Saxon settlement, and "bourne," meaning a stream or brook.

17th-18th Century:
The railway arrives, connecting Sittingbourne to London and Dover, leading to industrial expansion.

Late 19th Century:
Paper mills, brickworks, and cement industries develop, transforming Sittingbourne into an industrial hub.

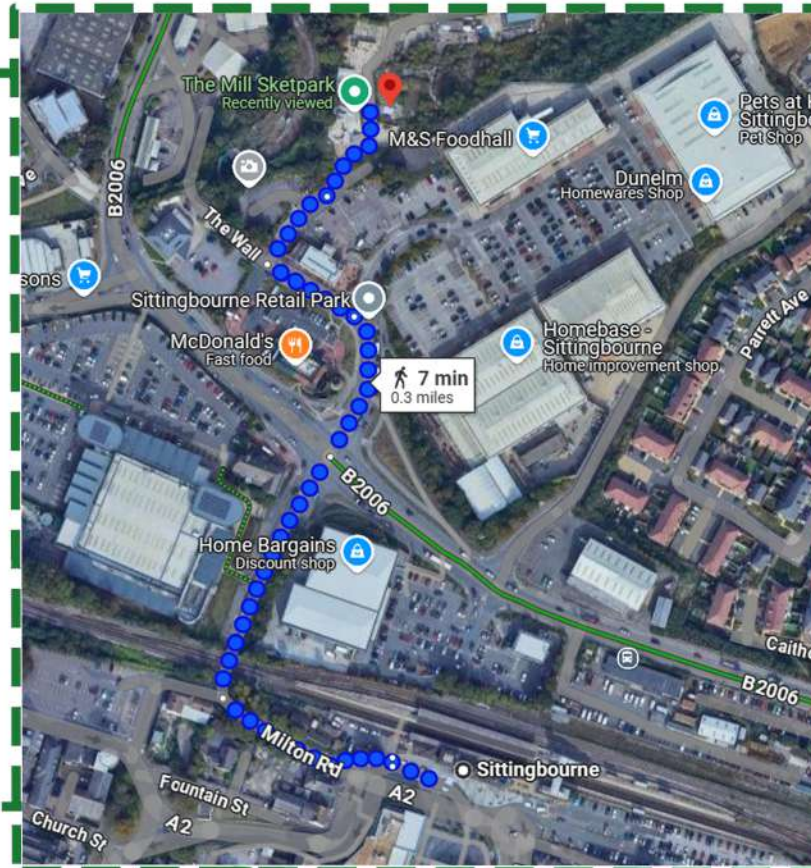
21st Century: Urban Regeneration & Development

20th Century: Growth & Regeneration

HISTORY



SITE LOCATION



High Street



0.5 miles

Responding to Site

History & Industrial- Papermills, Brickworks & Shipbuildings.

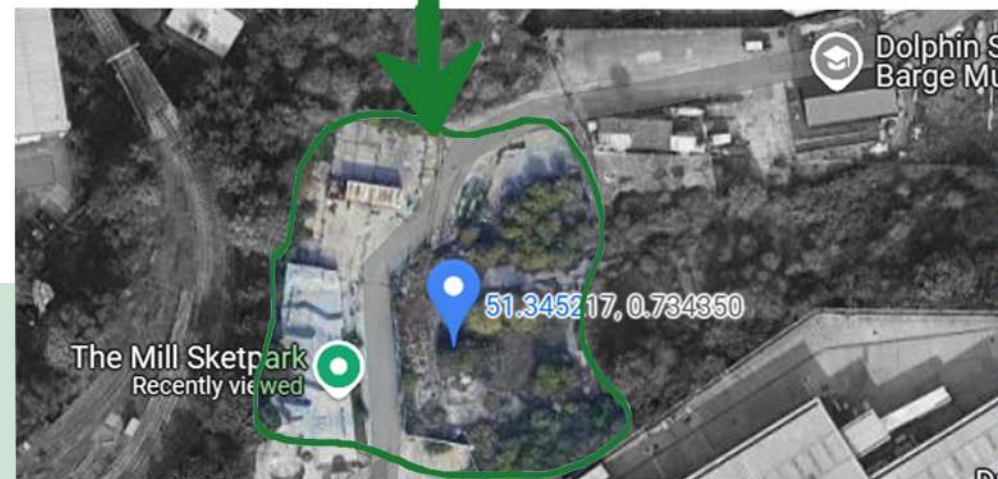
Public Space & Social Needs-

- Lack of Identity
- Poor accessibility
- No community engagement.
- Connection to the town.
- Site includes Storage sheds, chain fencing, overgrown vegetation.
- Immediate surrounding proximity to commercial zone, near fastfood outlets.

Entrance



0.3 miles
From station



Overgrown Vegetation

Lloyd's Wharf

SITE VISIT

HISTORY

2019 :

The new museum was completed at Lloyd's Wharf, continuing to preserve the area's maritime heritage.

2008 :

A fire destroyed the original museum building.

1961 :

The Dolphin Sailing Barge Museum was established in a Victorian sailmaker's loft at Dolphin Yard.

Victorian Era :

Milton Creek became a key site for barge-building and brick-making, with barges transporting bricks to London and returning with domestic waste for processing.

1905 :

The tramway was converted to steam power under Frank Lloyd (Edward's son)

1860s :

Edward Lloyd, a newspaper publisher, acquired a local paper mill and built Lloyd's Wharf to facilitate transportation via Milton Creek



2007:

The Sittingbourne Paper Mill closed, marking the decline of industrial activity in the area.

2009:

The site was acquired by Essential Land, a London-based consultancy, for redevelopment into a mixed use development integrating residential, commercial, and recreational spaces.

19th Century:

Milton Creek became a key transport hub for Sittingbourne's industrial activities, supporting the barge-building industry and facilitating the movement of bricks, paper, and other materials to London.



Fig: Map showing entrance to the site

Fig: The site

THE SITE



STRENGTHS

- Waterfront location allows for an eco-friendly.
- Historical & cultural significance can attract tourism
- Community support & engagement from local groups.



WEAKNESSES

- Site neglect & pollution
- Limited accessibility



OPPORTUNITIES

- Cultural & recreational hub
- Markets, events, public art, and workshops.
- Improved connectivity & walkability
- Linking to Milton Creek Park and Sittingbourne's town center.



THREATS

- Climate & Environmental Risks
- Rising water levels, extreme weather
- increased foot traffic

Important Landmarks
& Gateways

Conclusion & Strategic Focus

- Foster a multifunctional space that serves cultural, recreational and environmental needs.
- Community-led design that respects the site's historical context.

Community Needs & Social Research

Local Residents (families, young professionals, elderly)
Visitors & Tourists (heritage lovers)
Artists & Cultural Groups (exhibitions, pop-up installations)
Local Businesses (cafés, eco-markets, small-scale retail)

*Who will use
the space?*

Public gathering & event spaces
Safe & accessible walking & cycling paths
Nature-based relaxation areas (gardens, biodiversity zones)
Educational & heritage-focused installations

What do they need?

SWOT Analysis



Fig: First attempt using paper mache and green sheets.

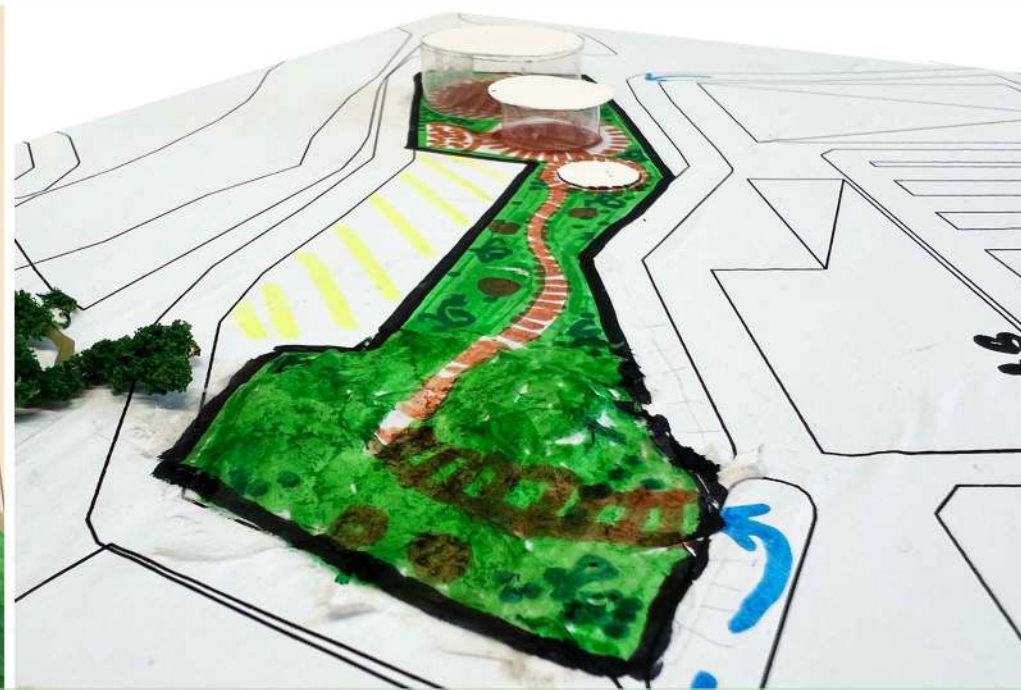


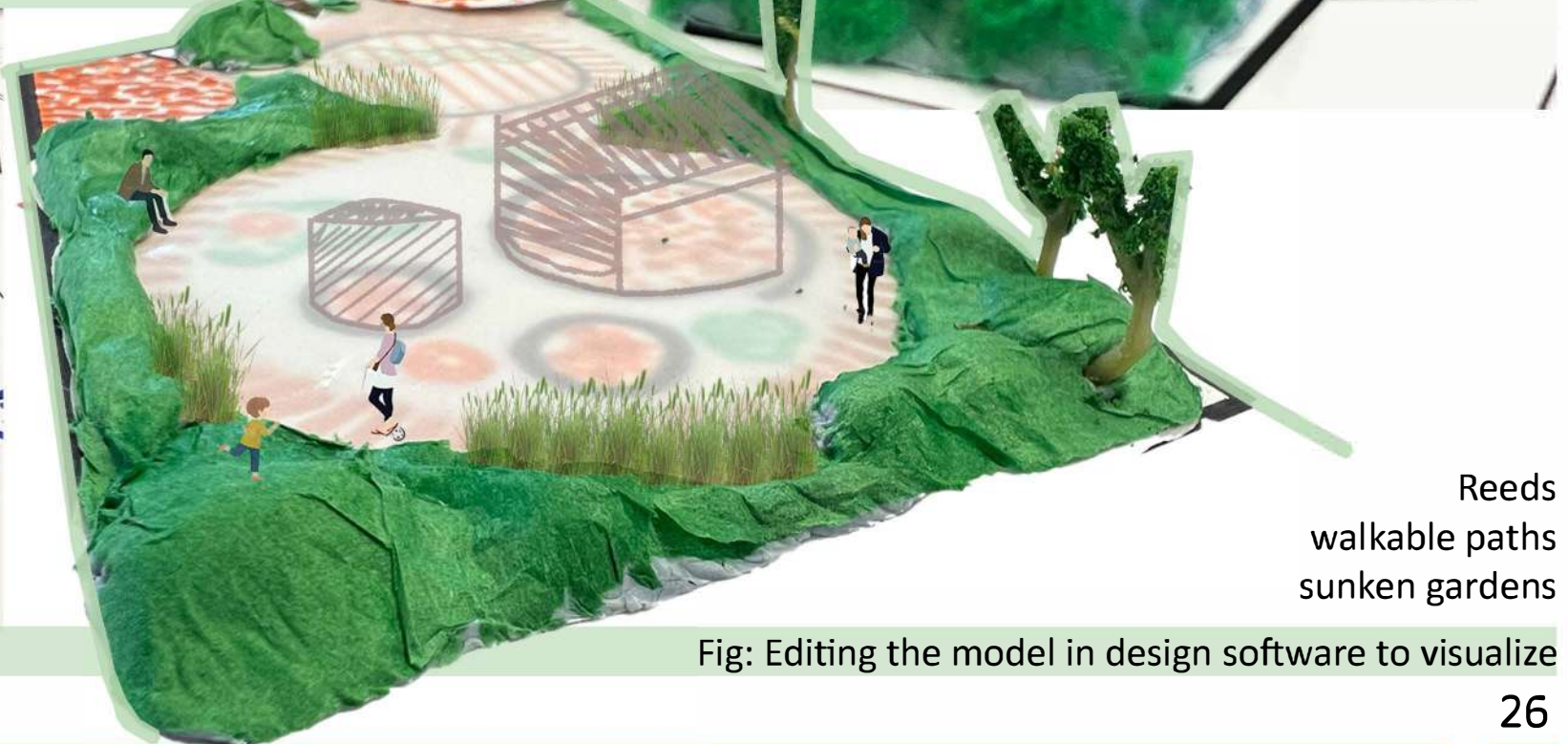
Fig: First prototype..



Fig: Second model using blu tack for desired shape.



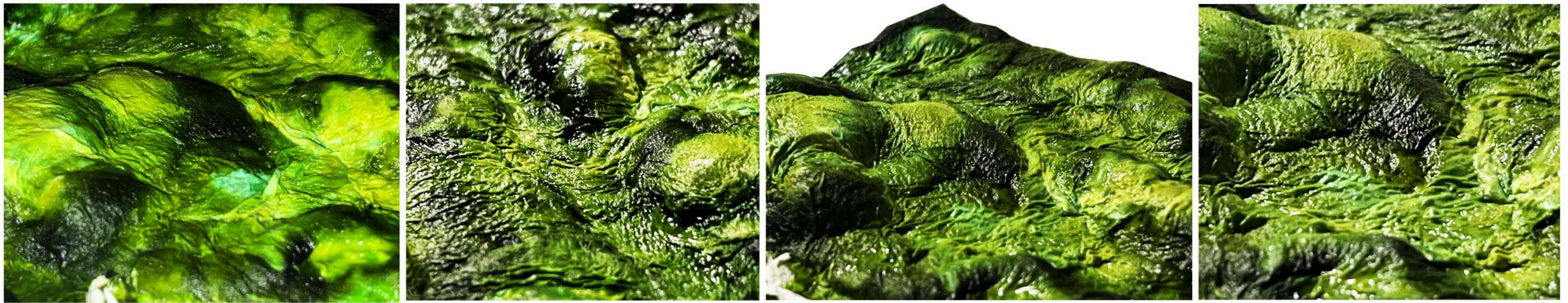
Fig: Experimentating sunkan areas and high inclined for seating (viewing area)



Reeds
walkable paths
sunken gardens

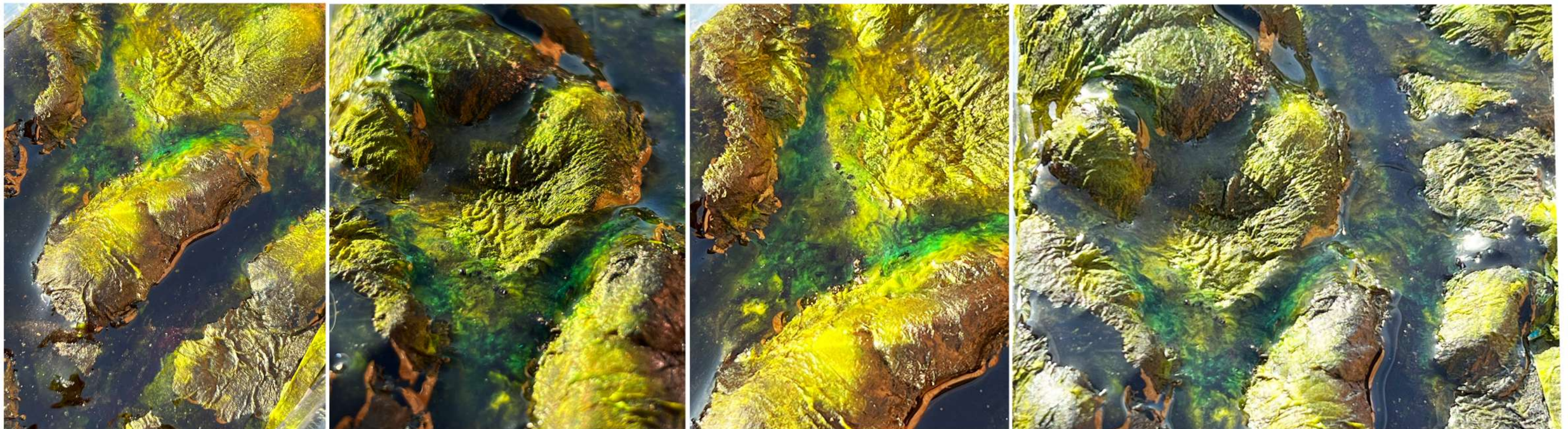
Fig: Editing the model in design software to visualize

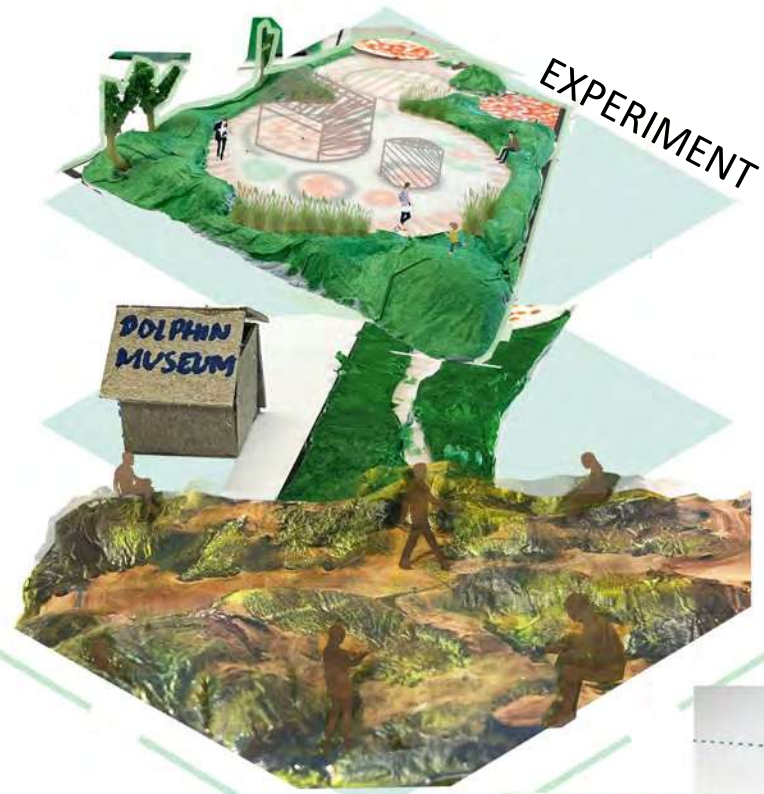
EXPERIMENTATION- II



Material Exploration Analysis: Purpose of the Model

- This model is a tactile landscape experiment inspired by the silt and cracked soil of Milton Creek.
- Using Blu-Tack to mimic the plasticity of silt, it explores how natural forces like water and erosion shape terrain over time.
- Earthy tones and greens represent sediment flow and vegetation growth, symbolizing nature reclaiming space.
- More than a terrain study, it offers a conceptual approach to landscape design, one that embraces the land's natural scars as guiding forms rather than concealing them.





EXPERIMENT



VICTORIAN LOFT



CONSTRUCTION



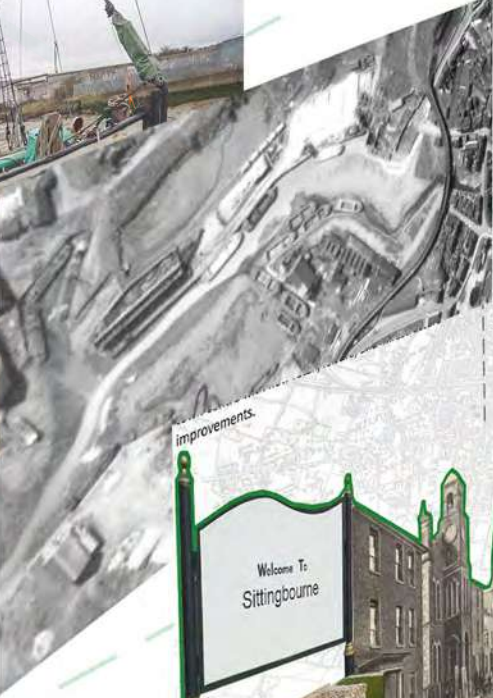
DOLPHIN MUSEUM



SITE



HISTORY



TOWN/ SITE



RAYBEL





SITE PLAN- ZONING

High Ceilings
To allow for the
vertical storage

Natural Light

Location
near docks, harbours,
and along waterways

Heavy Structures
The buildings were
sturdy

Architectural Style
The Victorian era,
with features like
brickwork, ironwork
and distinctive
rooflines.
Brick load-bearing
walls on ground
floor



1. SILVER BIRCH



2. ALDER



3. WILLOW



4. FIELD MAPLE

MOOD BOARD/ MATERIALS

Active / Physical Activities

Dog walking

Dog walking

Passive / Relaxation Activities

Walking

Sitting on benches
Reading

Jogging

Friends gathering
Seasonal events

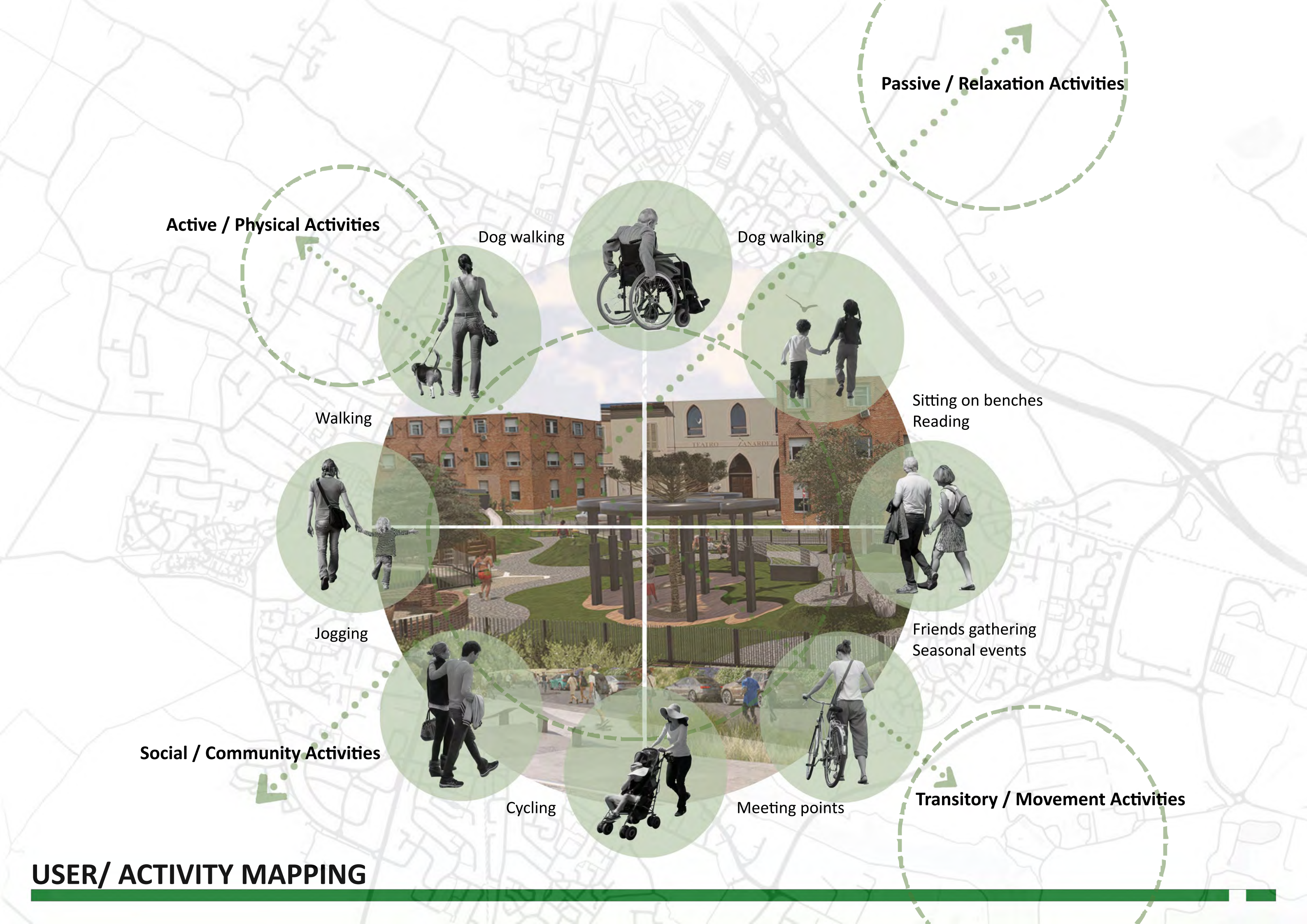
Social / Community Activities

Cycling

Meeting points

Transitory / Movement Activities

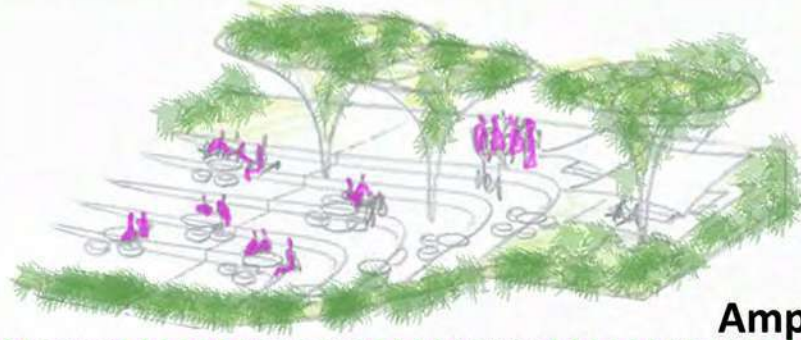
USER/ ACTIVITY MAPPING



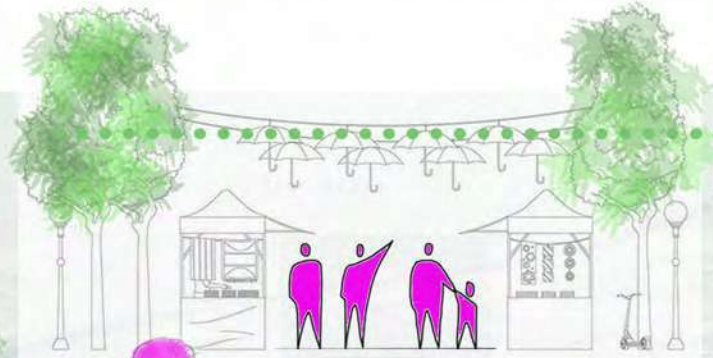
Central Hub



Cafe

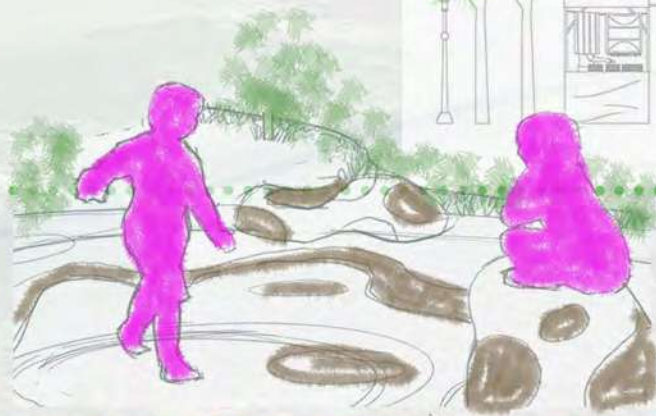


Amphitheatre



Local vendors

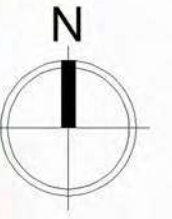
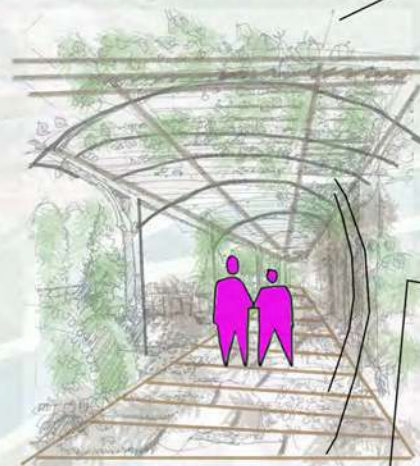
Play area



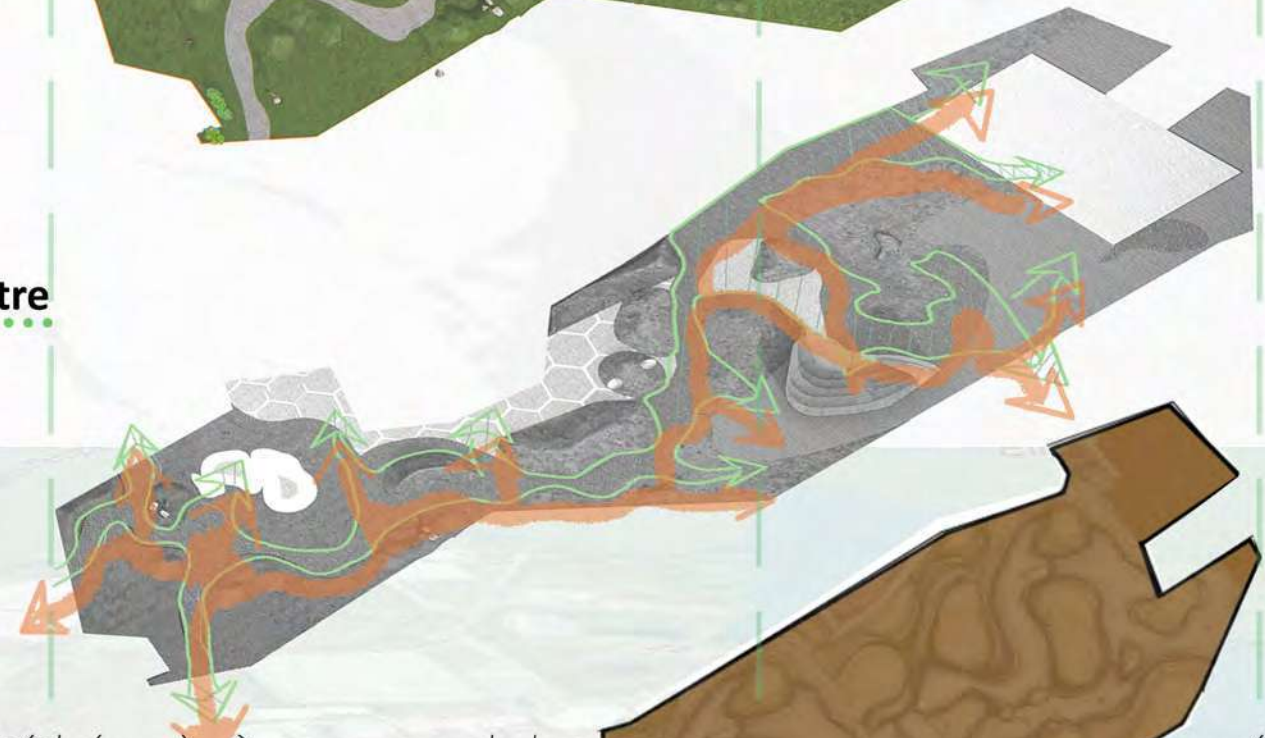
Seating area



Quiet zone

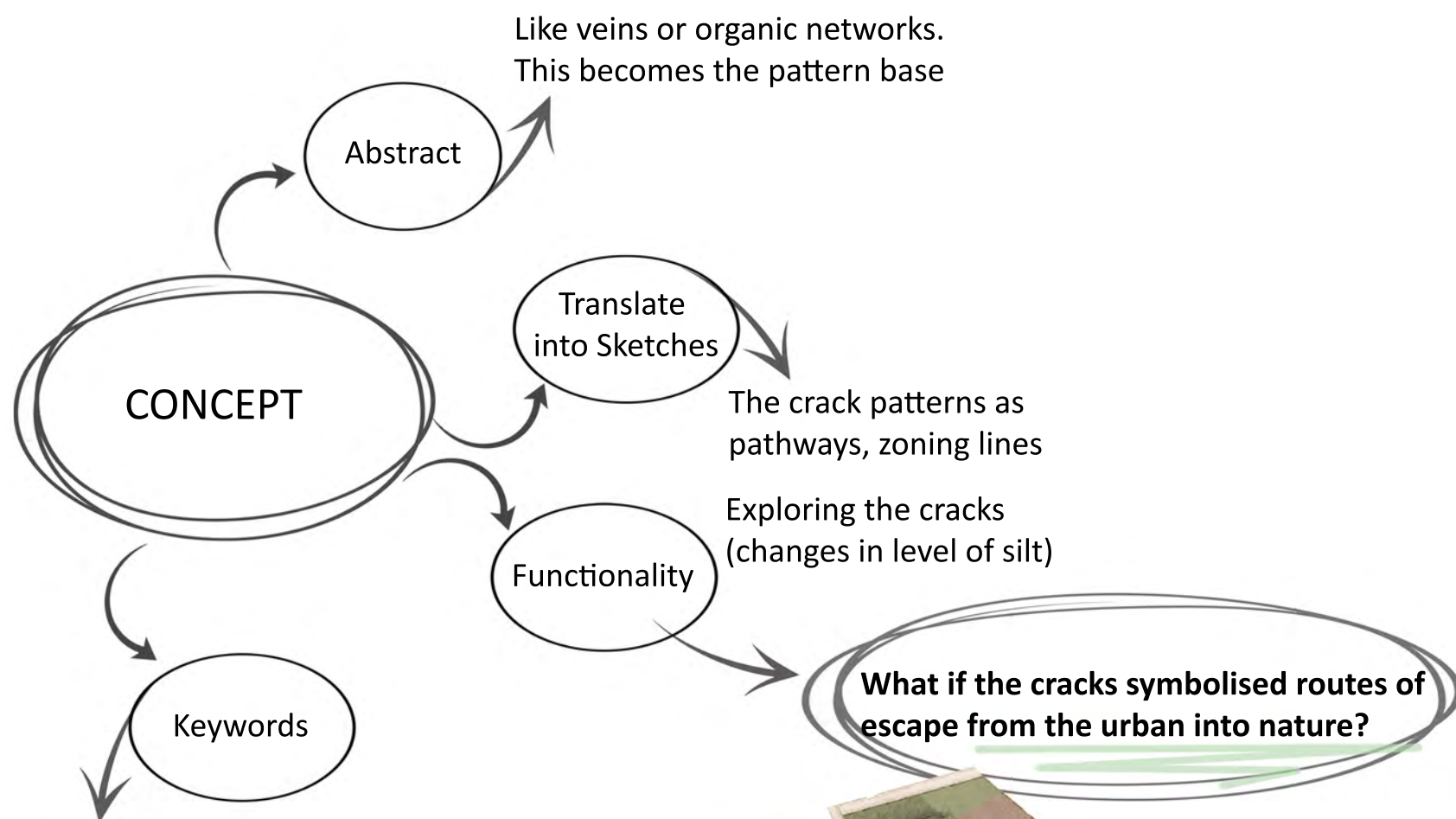


FUNCTION DIAGRAM





SITE



- Cracks as life lines
- Nature's fragmentation
- Organic flow in urban rigidity
- Earth revealing stories



CONCEPTUAL PLAN



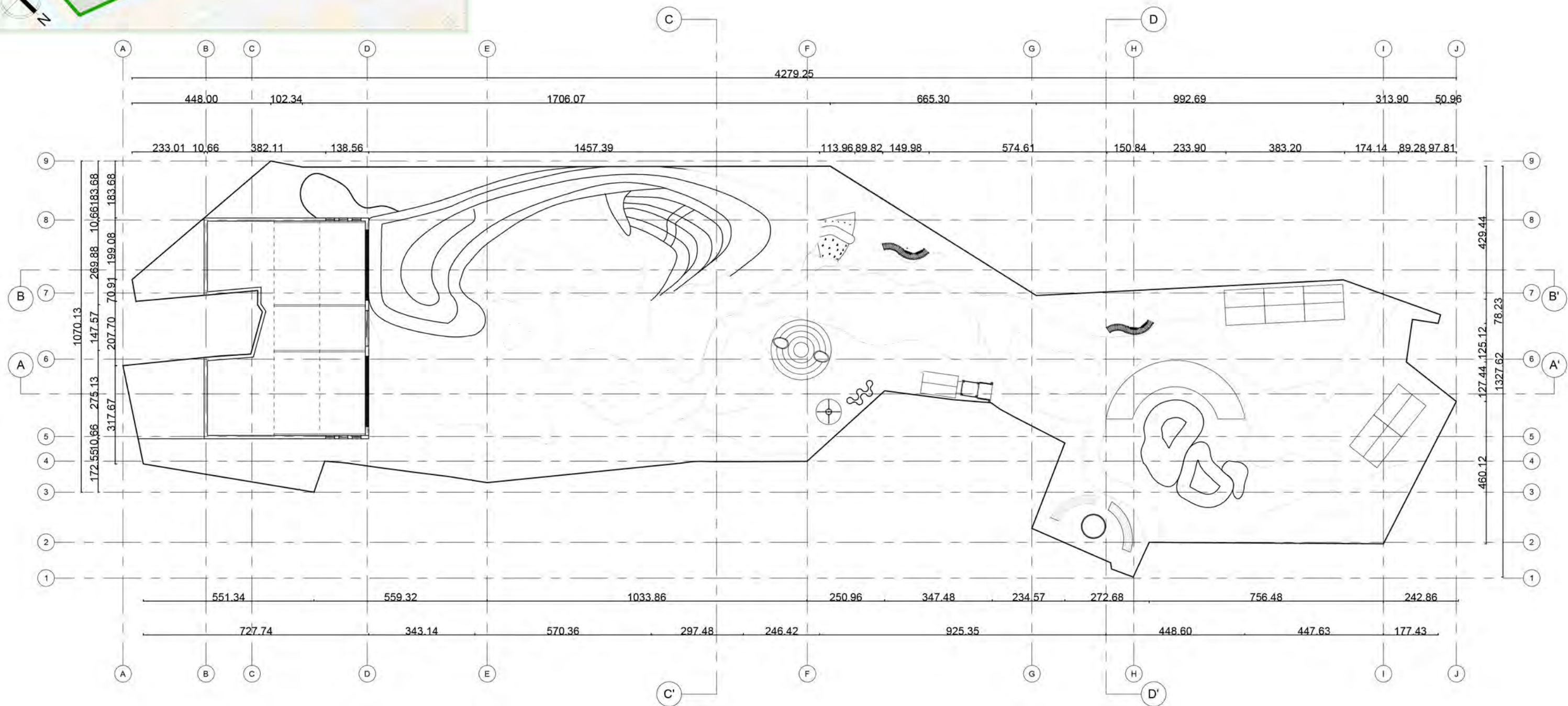


Fig: PLAN
SECTIONS

Scale 1:500

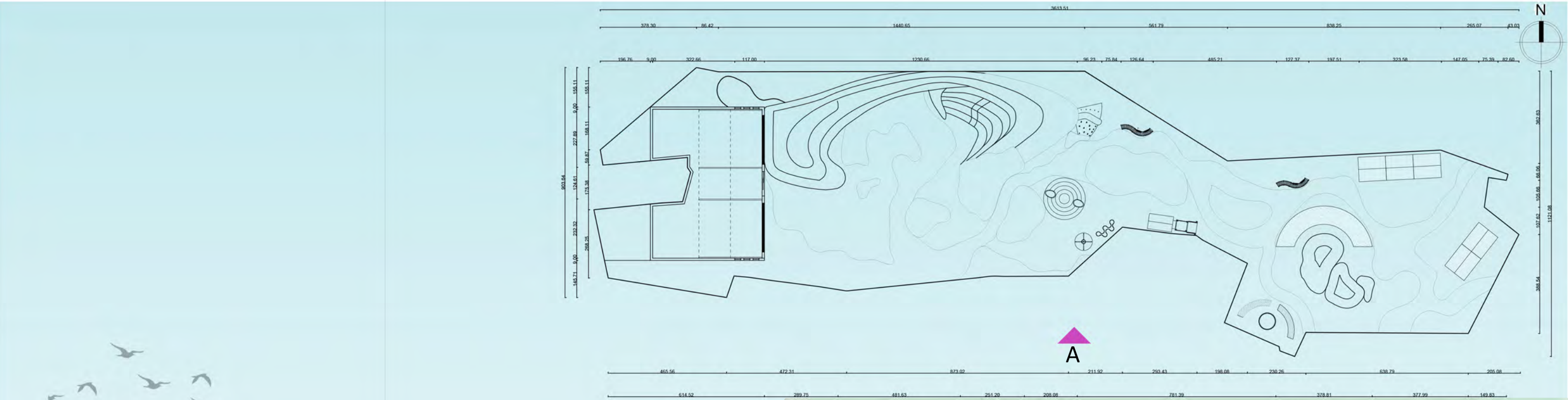


Fig: Plan



Fig: Elevation A

ELEVATION



Fig: Cafe detail

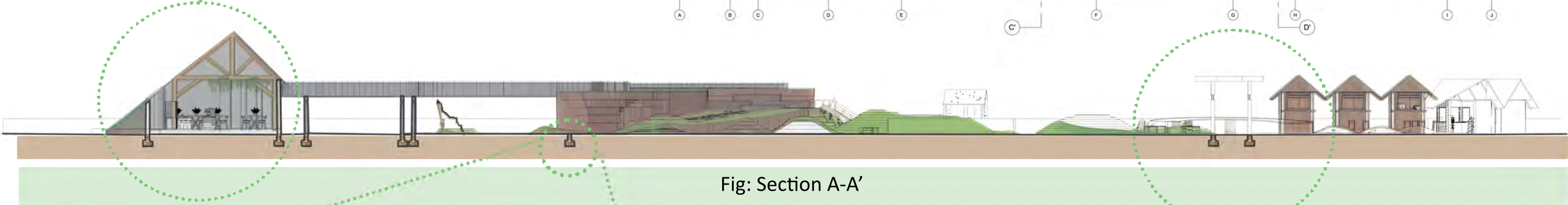
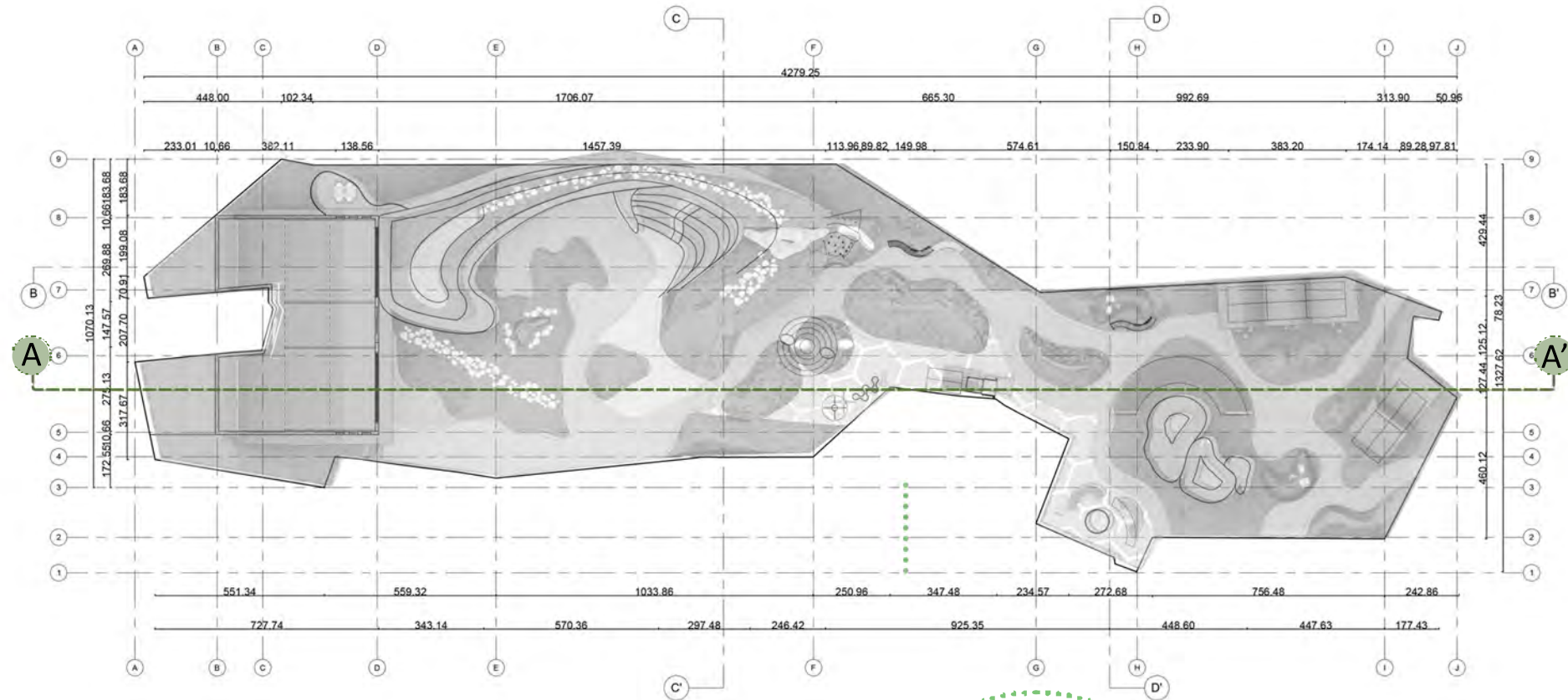


Fig: Section A-A'

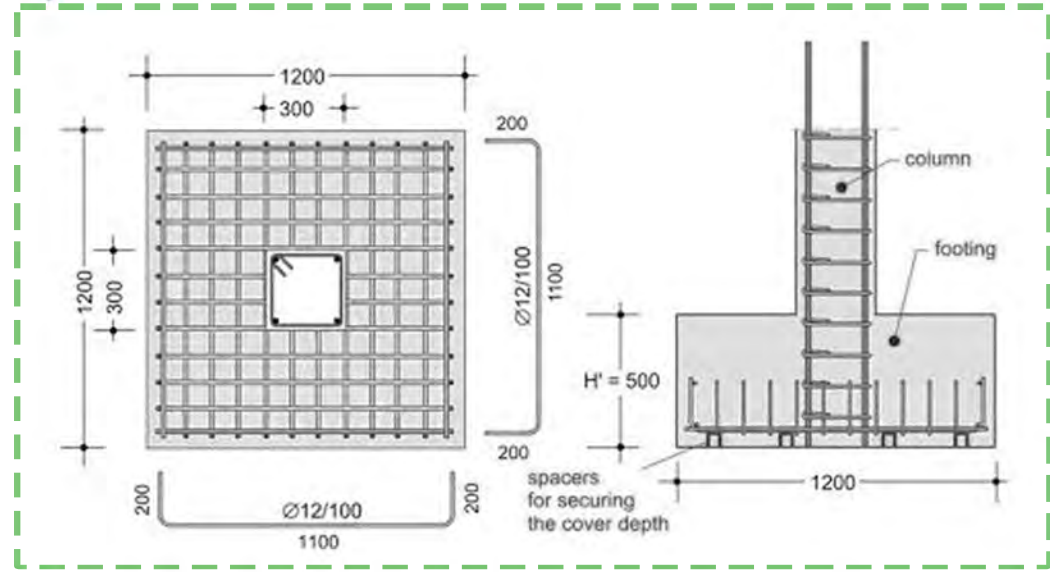


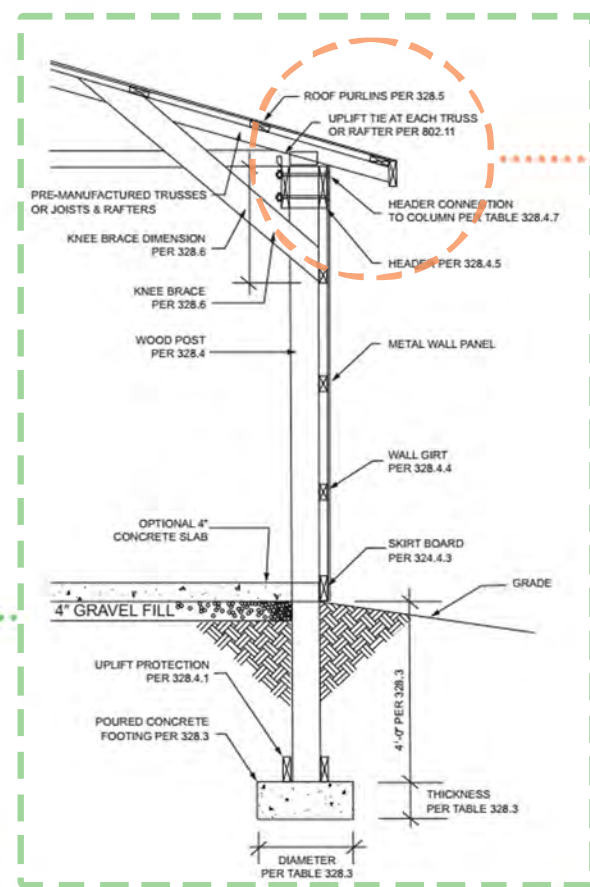
Fig: Footing detail



Fig: Shade area detail

SECTIONS

Fig: Pillar post & frame work detail



Detail B

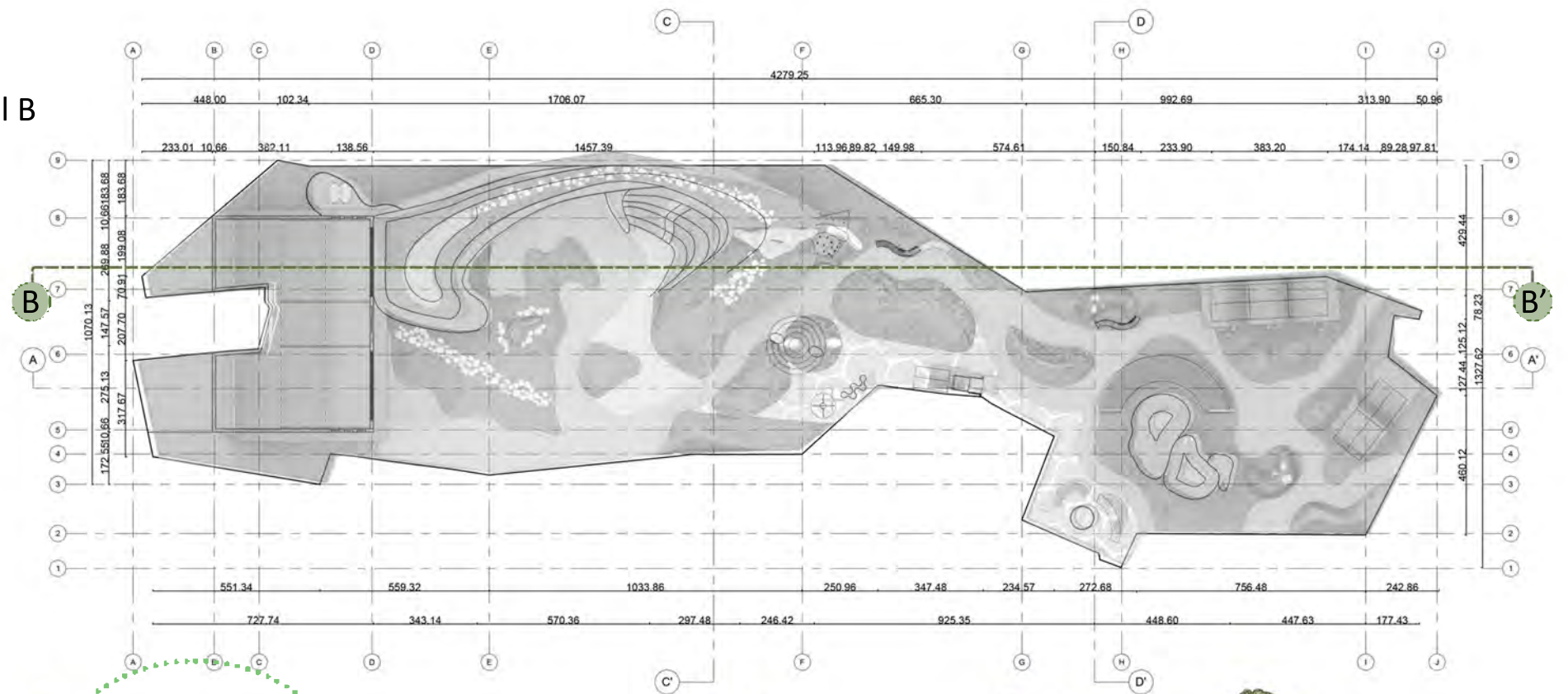


Fig: Section B-B'

Detail B

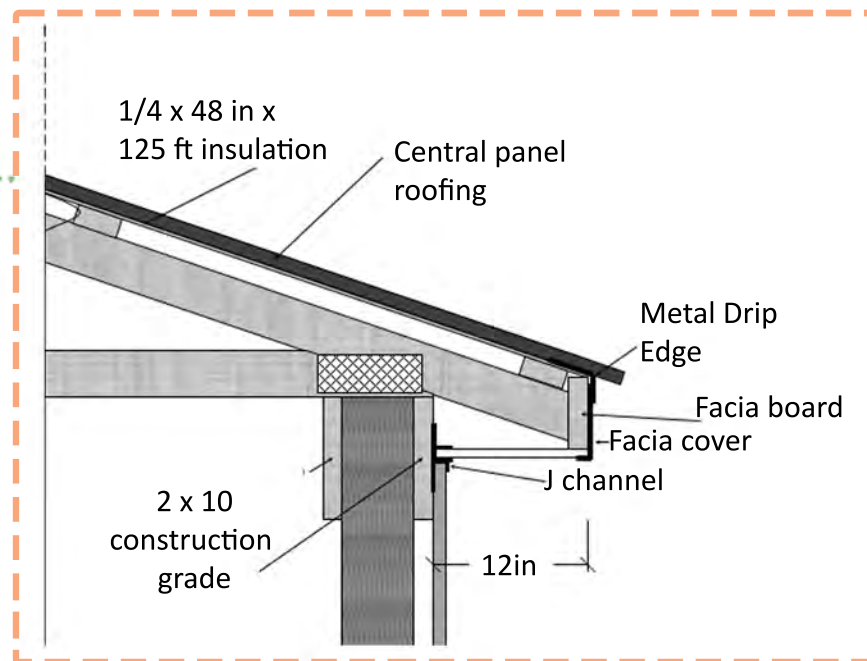


Fig: Roof detail

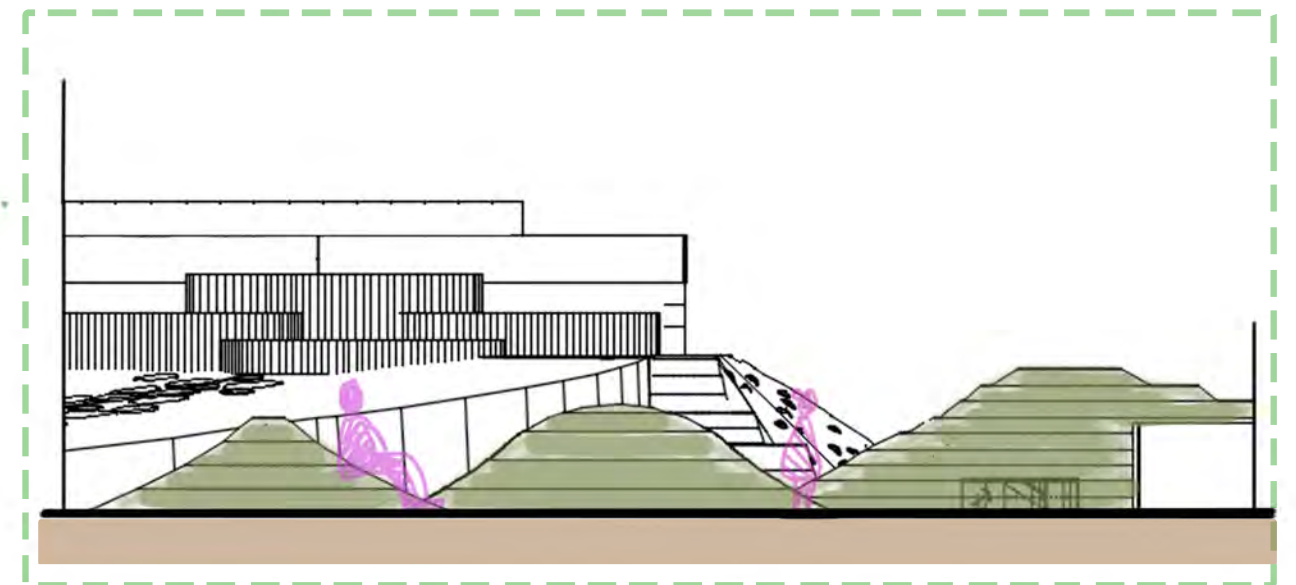


Fig: Shade area detail

SECTIONS

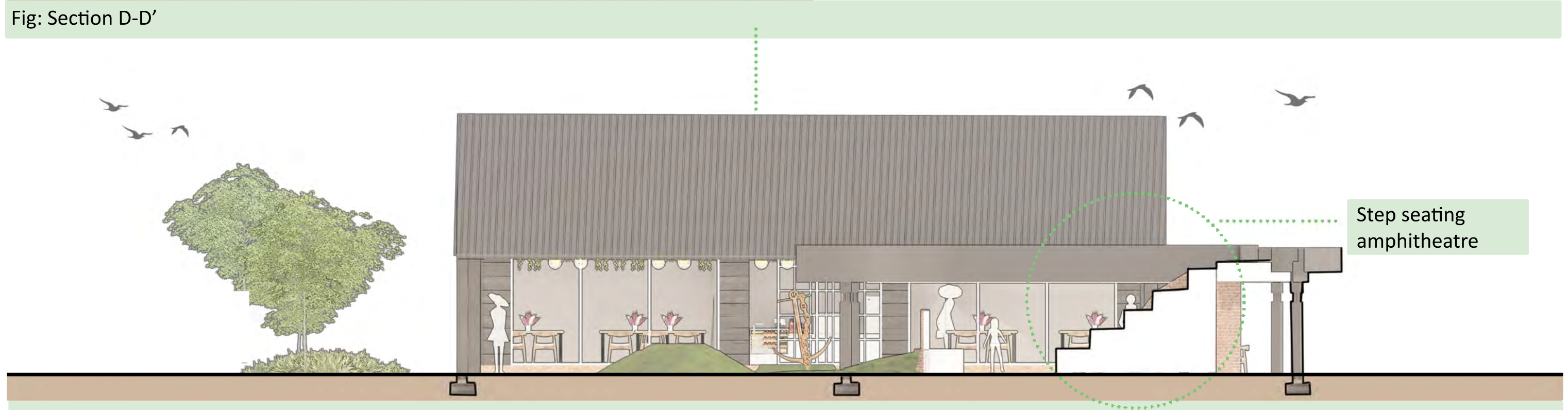
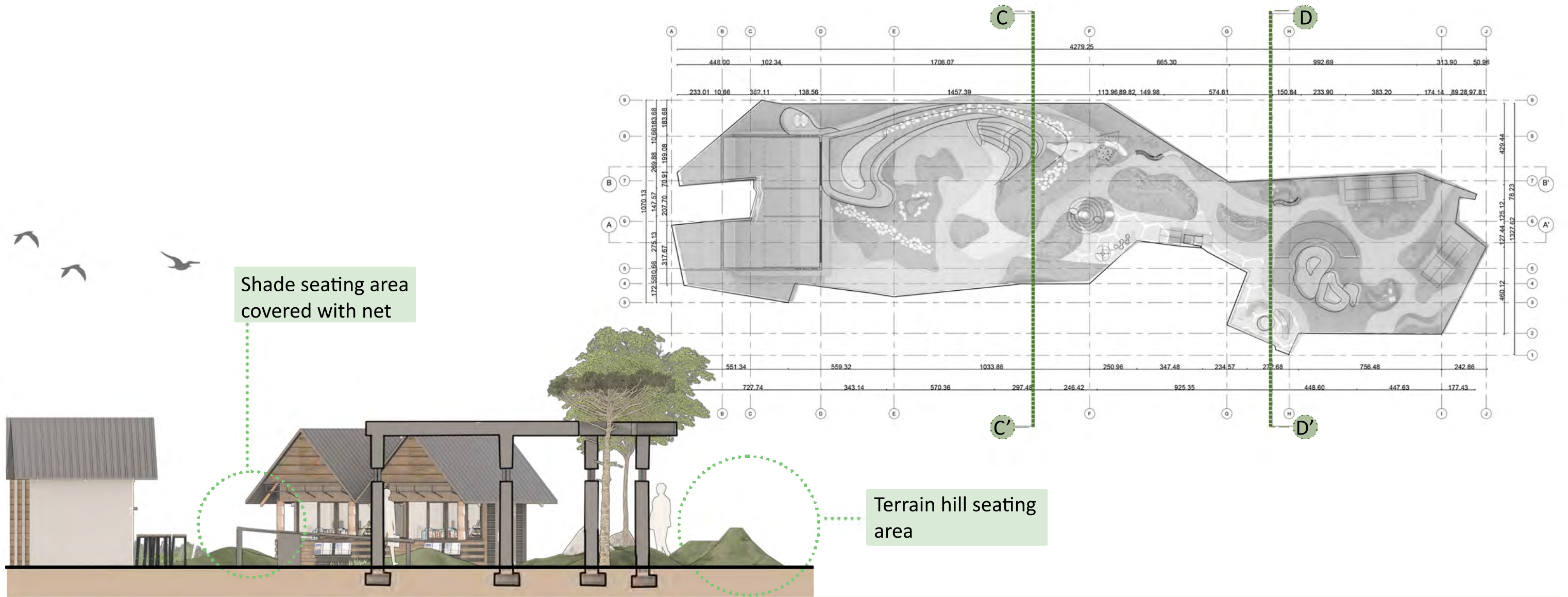


Fig: Section C-C'

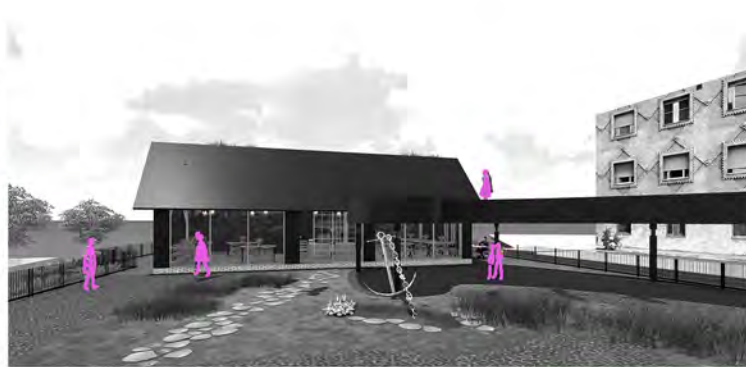
SECTIONS



Pathway



Central Hub



Central Hub



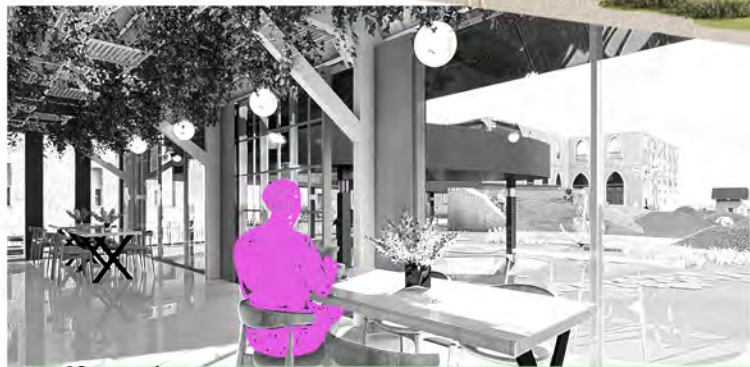
Ampitheatre



Outdoor seating



Seating area



Coffee shop



Play area



Seating area



view area

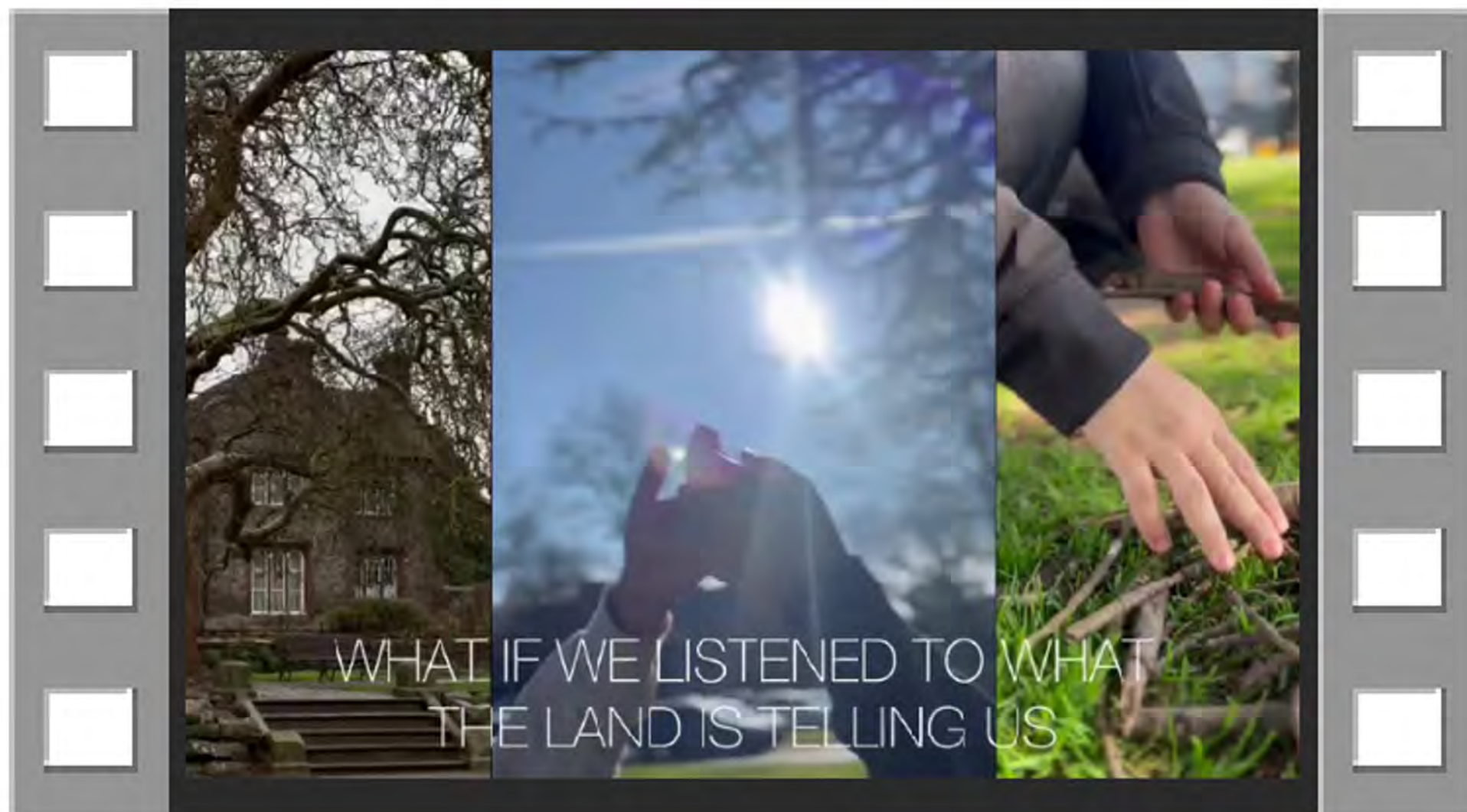


Entrance with vendors

RENDERS

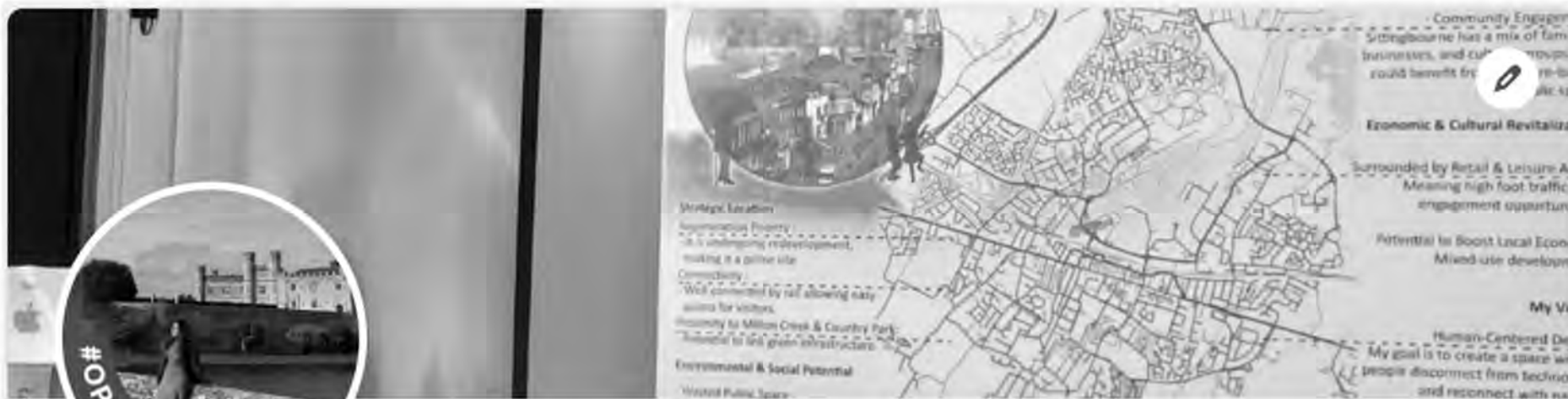






https://ucreative-my.sharepoint.com/personal/2415913_students_ucreative_ac_uk/_layouts/15/stream.aspx?id=%2Fpersonal%2F2415913%5Fstudents%5Fucreative%5Fac%5Fuk%2FDocuments%2F2415913%5FLAMA%5FCARD%207005%2Emp4&referrer=StreamWebApp%2EWeb&referrerScenario=AddressBarCopied%2Eview%2E31ac27bc%2D9fea%2D4295%2Da481%2D1f41d74ed5e4





Preza Lama

Add verification badge

Interior architect

Sturry, England, United Kingdom · Contact info

Open to

Add profile section

Enhance profile

Resources

Open to work

Interior Architect, Interior Designer and Interior Design Intern roles
Show details



University for the Creative Arts

LinkedIn

Senior Interior Architect / Designer

Elizabeth Nixon Interiors

Canterbury CT1

£28,000 - £38,000 a year · Full-time

Apply now



Full-time

Location

Canterbury CT1

Full job description

Overview

We are seeking a talented and experienced Senior Interior Architect and Designer to join our dynamic team. The ideal candidate will have strong design skills and be proficient in various design software, including Adobe Suite and AutoCad. You will be responsible for creating functional and beautiful spaces, which meet the needs of our clients while adhering to budget and time constraints. This role requires a blend of creativity, technical skills and project management abilities. This person may be required to support architectural projects as well, so experience with residential planning applications and building regulations applications would be preferred.

Interior Designer

Designed Search

Faversham ME13 · Hybrid work

£30,000 - £45,000 a year

Apply now



Full job description

A friendly design practice are at an exciting period of growth and are excited to add a couple of Interior Designers to their established and friendly team again.

To be suited for this all round role, you may come from a role working as a Mid-weight Interior Designer, Principal Designer, Senior Interior Designer, Senior Interior Architect, Senior Interior Technician to name a few different job titles, due to the medium size of this local firm, everyone tends to play a hands on role on projects and works across project stages.

This role will offer you a chance to work to your strengths whether that may be more design or technical work. The company primarily work on leading projects for some well known companies. Experience across either the Retail, Hospitality (pub and restaurant design experience of particular interest) or Commercial sectors would be preferred and it is essential you have experience working on live projects. Experience with Revit and Sketch-up & Photoshop is also highly

and experience-driven environments that merge intelligence. As a core part of the team you will be marrying the apt to the construction seeing projects through in a hands on

Your

Your application submitted



You pre:



You will get an email confirm
prezalama@gmail.com

Your application has been submitted!



You will get an email confirmation at
prezalama@gmail.com

https://uk.indeed.com/viewjob?jk=476a2a2ed167580b&from=shareddesktop_copy

PREZALAMA

INTERIOR ARCHITECT



+44 7570733992

CT2 0PE

prezalama@gmail.com

8 Mccarthy ave, Sturry

EDUCATION

MA Architecture	University for Creative arts Canterbury	2024-2025
BA in Interior Architecture	IEC college Of Arts and Fashion Limkokwing University	2017-2020
High school Level	Sainik Awasiya Mahavidyalaya Sallagari, Bhaktapur Faculty: Science	2011-2013

EXPERIENCE

2020-2023
House of Interiors

2019-2020 |Product Designer
Tyre tressures

May-July'2019|Intern
Conception Interior Pvt. Ltd,

REFERENCES

Er. Kundol Shekar Amatya
ID Tejita Vaidya Amatya
- Conception Interior Pvt Ltd
Kupandole, Lalitpur
01-2112220
conception_interior@yahoo.com

Ar.Deepa Dhamala
Chief Architect
-House Of Interiors
Sukhedhara

To apply mind and spirit
and perform my duties honestly and
integrity. As an employer challenging this
position in a reputed organization.
Where I can exhibit my ability and
skills towards the growth of
the organization.

SPECIAL ATTRIBUTES

- Drawing AutoCAD and 3D max (well versed)
- Expert 3D modeling and visualization skills.
- Concept Designing
- Contruction Drawing
- Planning & Designing
- Residence Design
- Commerical Design
- Office Design
- Project Managemant
- Research Methodology
- Hand drafting, rendering and video animation
- Material's knowledge.
- Costing & Estimation
- Furniture Design



SOCIAL PAGES

TECHNICAL SKILL

Microsoft Office
Microsoft Power Point
Adobe Photoshop CC
AutoCAD
Sketchup
Lumion 8.0
3D Max
Vray

EXTRA ACTIVITIES

Volunter at Creative Bugs- Interio
Schema V'2017
Speaker at De'Arch- Interio Schema VII
Speaker at Interio Shema VIII
Participated at Furniture Design,
-Red DAY 2017-2018.

HOBBIES



Adventurous



Social Work



Designing



Sketching



Makeup



To Swim



Badminton



Music



Prezza Lama



itsprezza



Prezza Lama

myUCA Library:
Ruin and redemption in architecture by Barasch, Daniel, 2019
European Planning History in the 20th Century: A Continent of Urban Planning by Welch Guerra, Max edited by Welch Guerra, Max; Abarkan, Abdellah; Castrillo Romón, María A ; Pekár, Martin Volume 1, 2023, 1
Urban Park Planning for Sustainability: Resident Insights from China’s Major Cities by He, Biao; Wang, Siyu; Xiong, Qian Land (Basel), 01/2025, Volume 14, Issue 1
Low, S., Taplin, D., & Scheld, S. (2005). Rethinking urban parks: Public space and cultural diversity. University of Texas Press.

References
Bulldozers move. (2010, May 20). Kent Online. <https://www.kentononline.co.uk/sittingbourne/news/demolition-work-begins-at-sittin-a85032>
Carmona, M. (n.d.). Public Places, Urban Spaces: The Dimensions of Urban Design.
Crossley, J. (2024a, May 10). Historic barge to take to the water after four-year restoration. Kent Online.
<https://www.kentononline.co.uk/sittingbourne/news/historic-barge-to-take-to-the-water-after-four-year-restorat-306539>
Crossley, J. (2024b, September 11). ‘Living round here would stink - but I’ve got a plan to fix the smell.’ Kent Online.
https://www.kentononline.co.uk/sittingbourne/news/living-round-here-would-stink-but-i-m-got-a-plan-to-fix-t-312670/?utm_source=chatgpt.com
Crossley, J. (2024c, December 4). Plans for 187 waterside homes set to get green light. Kent Online.
<https://www.kentononline.co.uk/sittingbourne/news/plans-for-187-waterside-homes-set-to-get-green-light-316779>
Dolphin sailing barge museum. (n.d.). Org.uk. Retrieved May 21, 2025, from <https://historicswale.org.uk/dolphin-sailing-barge-museum>
Edward Lloyd - Lloyd’s weekly. (n.d.). Edwardlloyd.org. Retrieved May 21, 2025, from <https://edwardlloyd.org/sittingbourne2.php>
History of the line. (2014, March 10). The Sittingbourne & Kemsley Light Railway. <https://www.skrl.net/history-stock/history-of-the-line/>
Kemsley. (n.d.). Academia.edu. Retrieved May 21, 2025, from https://www.academia.edu/40389896/LIVING_BY_THE_CREEK_Excavations_at_Kemsley_Sittingbourne_Kent
Loose space: Possibility and diversity in urban life. (2006). Taylor & Francis Group.
Raybel. (n.d.). Org.uk. Retrieved May 21, 2025, from <https://www.nationalhistoricships.org.uk/register/225/raybel>
Raybel charters. (n.d.). Raybel Charters. Retrieved May 21, 2025, from <https://raybelcharters.com/>
Redboxmedia, A. +. (n.d.). Allford Hall Monaghan Morris / allford Hall Monaghan Morris. Ahmm.co.uk. Retrieved May 21, 2025, from <https://www.ahmm.co.uk>
Setting the scene: Sittingbourne and Milton. (n.d.). Hrgs.co.uk. Retrieved May 21, 2025, from <https://hrgs.co.uk/2352-2>
Sittingbourne. (n.d.). Org.uk. Retrieved May 21, 2025, from <https://historicswale.org.uk/sittingbourne>
Spirit of Sittingbourne, Kent. (n.d.). Designingbuildings.co.uk. Retrieved May 21, 2025, from https://www.designingbuildings.co.uk/wiki/Spirit_of_Sittingbourne,_Kent
The raybel at sittingbourne. (n.d.). Spitalfieldslife.com. Retrieved May 21, 2025, from <https://spitalfieldslife.com/2021/07/16/the-raybel-at-sittingbourne>
Wikipedia contributors. (2024, December 8). Milton creek Country Park. Wikipedia, The Free Encyclopedia.
https://en.wikipedia.org/w/index.php?title=Milton_Creek_Country_Park&oldid=1261805703
Wikipedia contributors. (2025a, March 14). Watling Temple. Wikipedia, The Free Encyclopedia. https://en.wikipedia.org/w/index.php?title=Watling_Temple&oldid=1280438663
Wikipedia contributors. (2025b, May 4). Sittingbourne. Wikipedia, The Free Encyclopedia. <https://en.wikipedia.org/w/index.php?title=Sittingbourne&oldid=1288826767>
(N.d.-a). Gov.uk. Retrieved May 21, 2025, from <https://services.swale.gov.uk>
(N.d.-b). Designingbuildings.co.uk. Retrieved May 21, 2025, from https://www.designingbuildings.co.uk/wiki/Spirit_of_Sittingbourne