

ELNARA
EYNALOVA

ISLAND SQUARE



Lack of Community Engagement: Spaces where people don't interact or feel a sense of ownership are more likely to attract criminal activity.



Abandoned Buildings: Neglected spaces attract antisocial behavior, including drug use, loitering, and violent crime.



Poor Lighting: Dark streets, alleys, and underpasses are hotspots for crime. Women often report feeling unsafe in poorly lit areas, especially at night.



FACTORS CONTRIBUTING

Lack of Visibility: Hidden corners, narrow alleys, and areas with poor sightlines make it easier for criminals to operate without being seen.



Poorly Designed Public Spaces: Spaces that lack natural surveillance, such as parks with dense foliage or poorly maintained pathways, are more prone to crime.

TO URBAN CRIME

UNDERSTANDING OF SHOREDITCH AND ITS SURROUNDINGS



National Crime
Rate Comparison

- 200%
- 170%
- 110%
- 60%
- 30%

POSSIBLE SOLUTION
ELEMENTS



**Pre-Industrial Era
(Before 18th Century):**

Most women worked within family businesses, farms, or as domestic servants. Some engaged in cottage industries like weaving and brewing.



Industrial Revolution (Late 18th – 19th Century):

Women moved to factories, particularly in textiles and manufacturing. Many also worked as domestic servants, nurses, and teachers. Working conditions were harsh, and pay was low.

Early 20th Century:

More women entered office jobs as clerks and typists. The 1914-1918 World War I saw women filling roles in munitions factories, transport, and other industries as men went to war.



HISTORICAL
JOURNEY

**Interwar Period
(1920s-1930s):**

Many women were forced out of jobs after the war, but more middle-class women worked in teaching, nursing, and clerical roles.

**Post-War Period
(1950s-1960s):**

Women were expected to return to domestic roles, but many continued working in part-time and lower-paid jobs.



**World War II
(1939-1945):**

Women re-entered the workforce in large numbers, taking on roles in engineering, agriculture (Land Girls), and even military support jobs.

1990s-Present:

Women increasingly pursued careers in all sectors, including business, politics, and STEM fields. Flexible work and maternity rights expanded. The gender pay gap remains an issue but has improved.





Straight men then follow them to gay bars, knowing women will be there.

This dynamic disrupts the original identity of gay bars as safe queer spaces.

MAIN ISSUE

Women often go to gay bars because they feel unsafe or harassed in traditional pubs.



PROBLEM OUTCOME

Gay bars lose their inclusive identity for LGBTQ+ communities.

Women still lack spaces that truly prioritize their safety and comfort.

PROPOSED SOLUTION

Creation of women-inclusive bars: safe, welcoming venues designed around women's needs while remaining open to all genders.

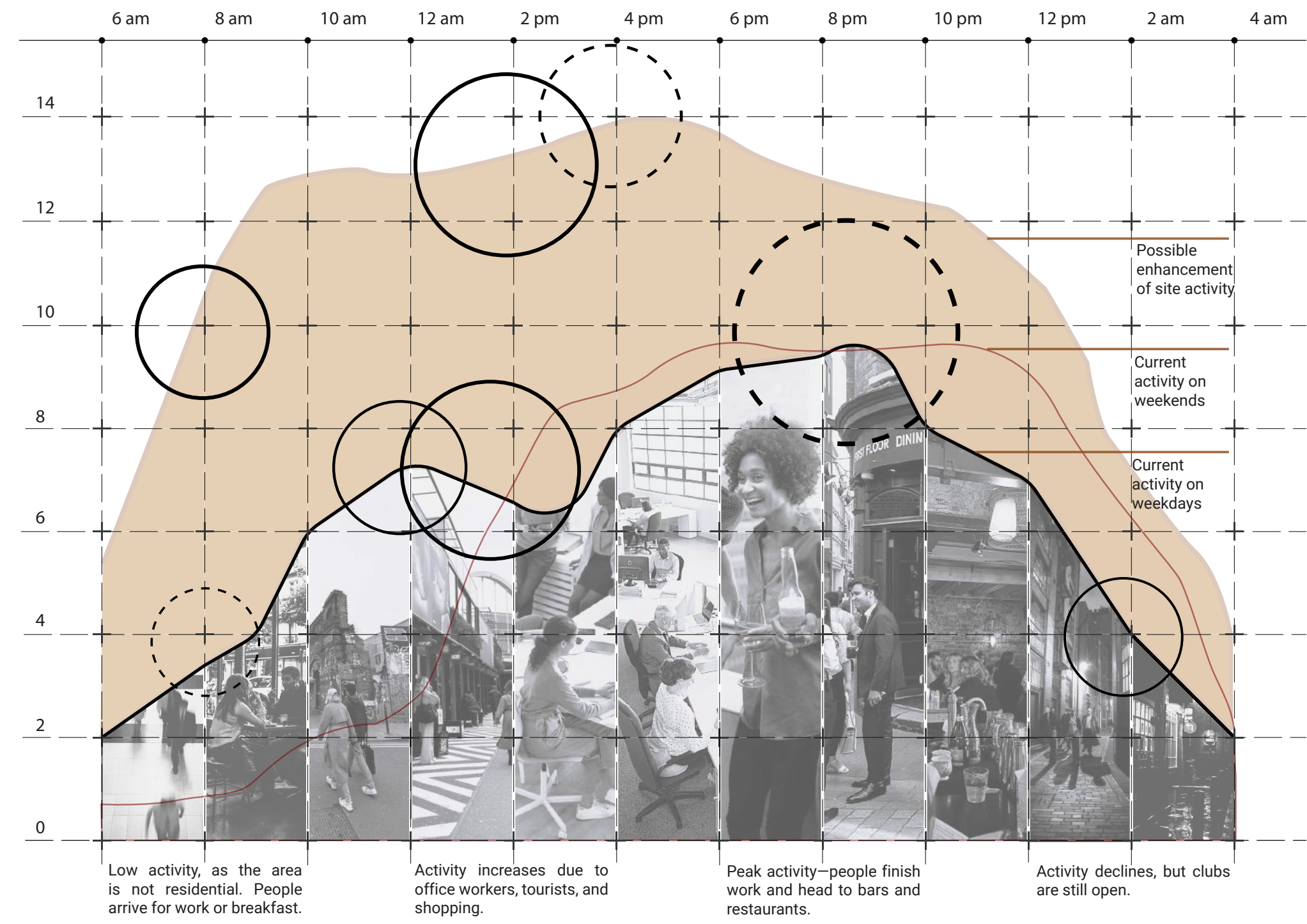


Restores queer spaces to their communities and offers women alternatives to unsafe pubs.

SITE ANALYSIS



ACTIVITY DIAGRAM IN SHOREDITCH



VISUALIZATION

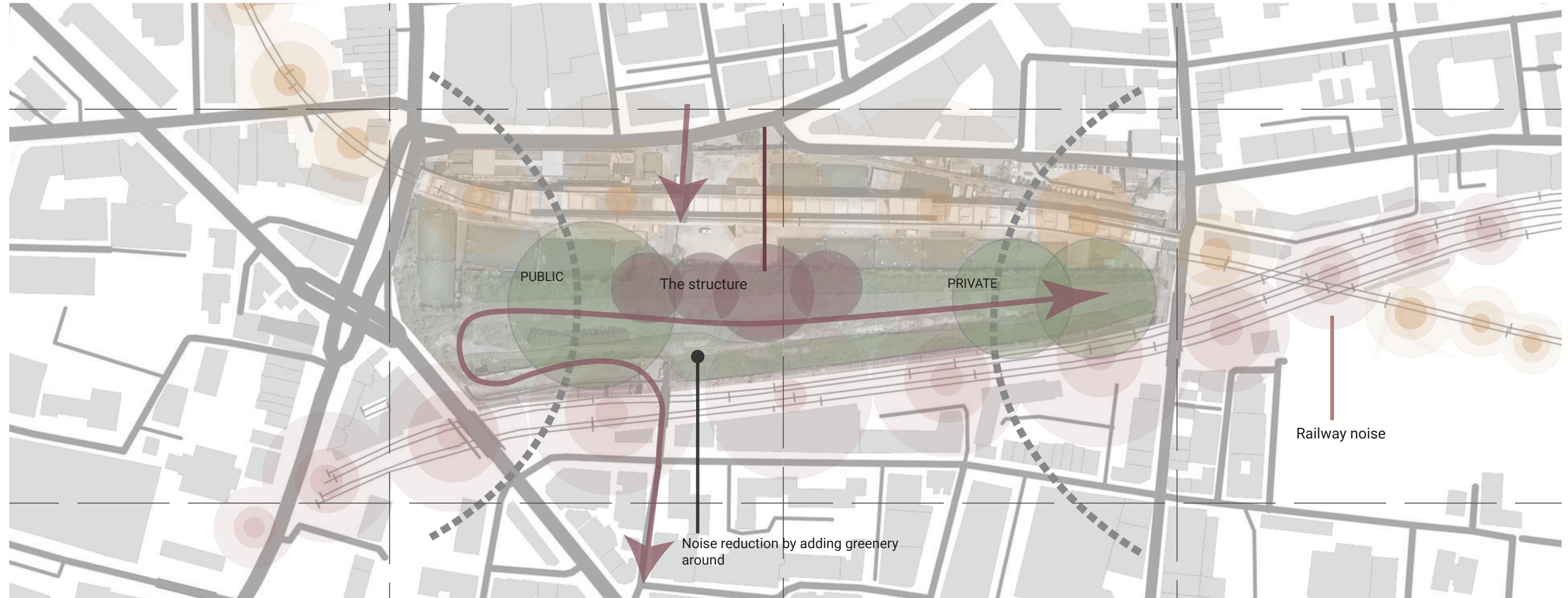


PROGRAM OUTCOME

Research Focus: Safety of Women in Public Spaces

Based on my research, I developed a program that supports women through safe, inclusive environments:

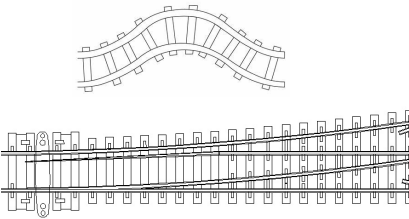
- **Work & Support Spaces**
Offices and co-working spaces designed to empower women
Environments that encourage collaboration and professional growth
- **Women-Inclusive Bar**
Safe alternative to pubs and gay bars
Protects queer spaces while creating a welcoming place for women
- **Food Court**
Family-oriented, casual, safe, and inclusive environment
Attracts diverse groups while ensuring comfort and security
- **Rooftop Restaurant**
Relaxed atmosphere with views
Safe, high-quality social space
- **Auditorium + Atrium**
Auditorium: space for women to share stories and experiences
Atrium: open area for informal discussions and community building
- **Underground parking part for all complex**
Provides parking for nearby office workers.
Attracts families visiting the site.



INSPIRATION FOR NARRATIVE APPROACH

RAILWAY

Railways symbolize industrial history, fitting Shortage’s aesthetic.



- Adds “mood” (rusty metal, tracks, mechanical textures).
- Could be used in details (e.g., steel beams, rail-inspired railings).

- Not structural—hard to integrate into the building’s form.
- Limited application (best as an accent, not a main feature).

Strong contextual reference, dramatic presence.

It’s difficult to use architecturally — you can’t “build” with railway. It’s more background than material.

GRAFFITI

Graffiti is an inseparable part of Shoreditch’s visual language. It reflects the area’s creative, rebellious, and ever-changing



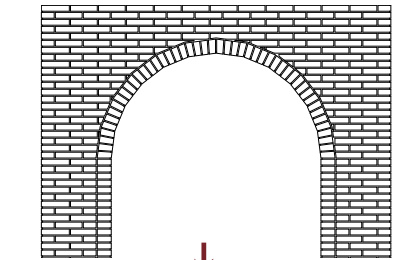
- It adds colour, identity, and emotion to the site.
- It helps capture the cultural side of Shoreditch, especially relevant for a younger, expressive generation.

Strong visual identity, instantly recognisable

It is not traditionally architectural — it’s surface-level and ephemeral — but still crucial to the spirit of the place.

ARCHES

Arches are “iconic in London” and fit Shortage’s industrial vibe. They add “structure, rhythm, and historical weight”—great for



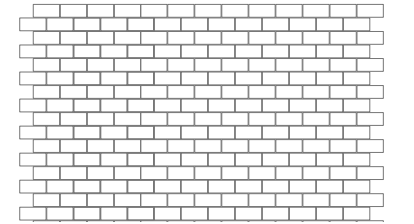
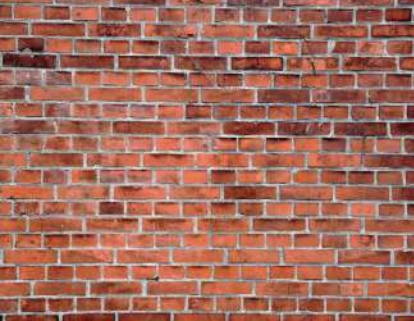
- Strong architectural impact” (works in facades, interiors, bridges).
- Naturally complements Brick—classic industrial combo.
- Can feel “imposing or intimate” (e.g., vaulted ceilings vs. narrow passageways).

Spatial potential — arches can be reinterpreted structurally or symbolically.

On their own, they might lack narrative strength unless tied to material or program.

BRICK

Brick is not only the primary material of the existing bridge, but also a defining element of Shoreditch and London’s overall architectural identity.



- It offers architectural depth — it’s tangible, malleable, and versatile.
- It connects the new design to its context, allowing the building to blend into the urban fabric.
- It carries a timeless and grounded aesthetic that reflects Shoreditch’s history.

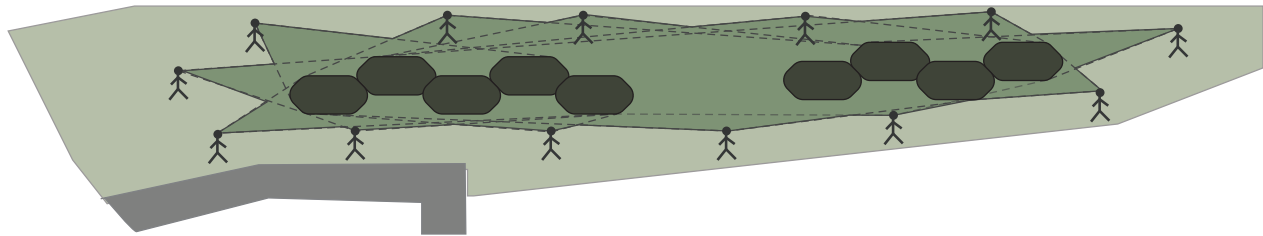
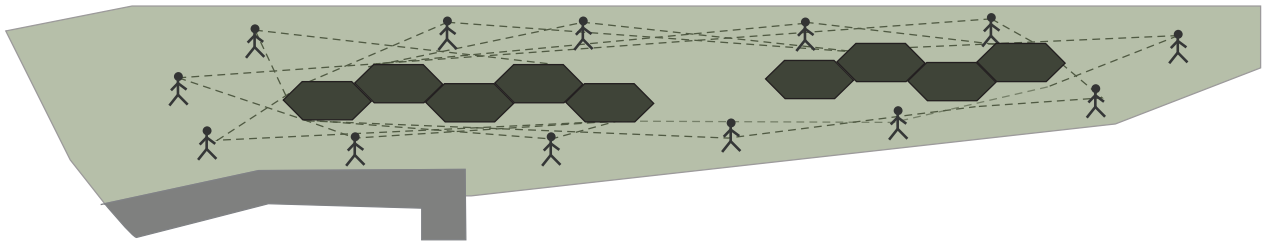
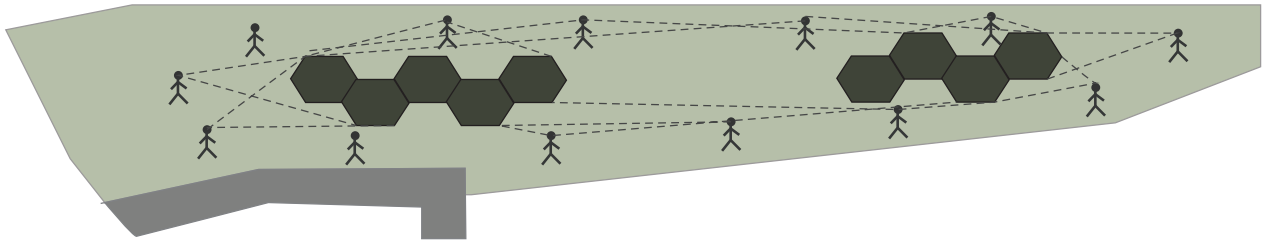
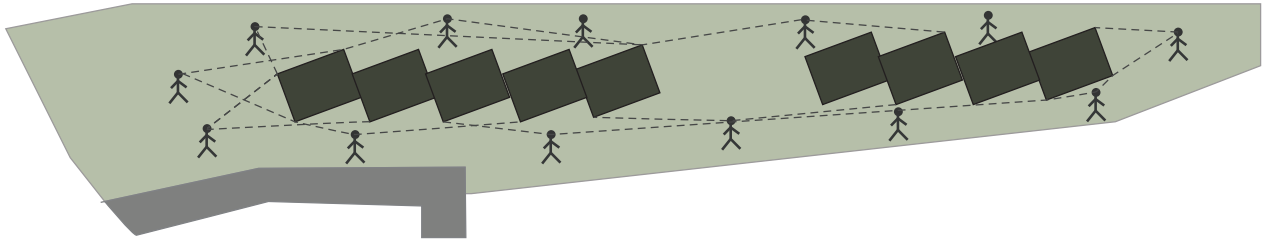
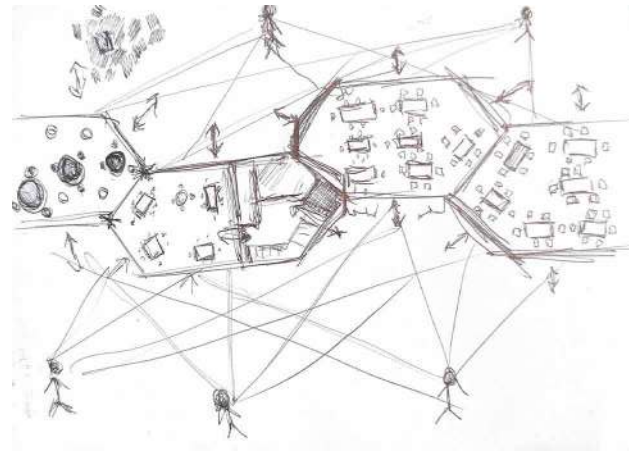
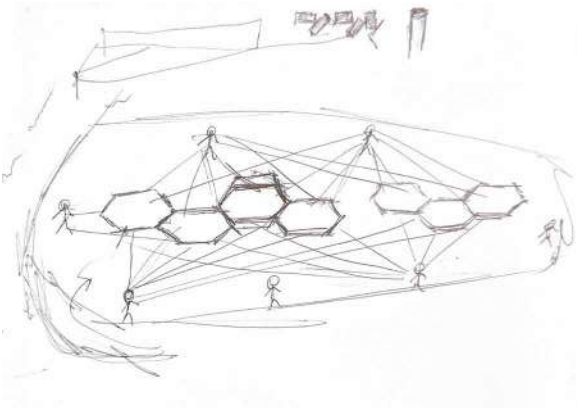
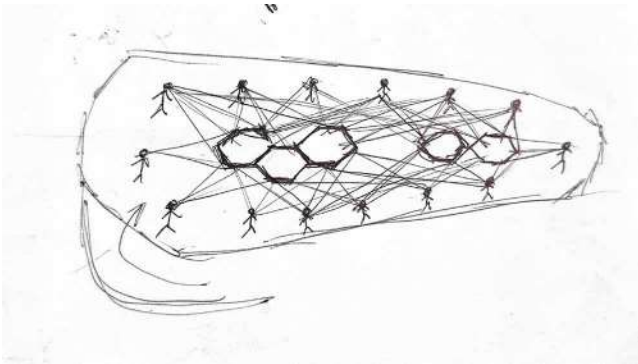
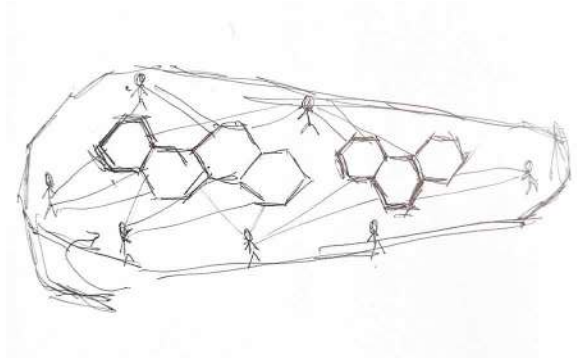
Brick allows design experimentation while remaining site-appropriate.

No real minus — it’s the strongest foundation for my narrative.



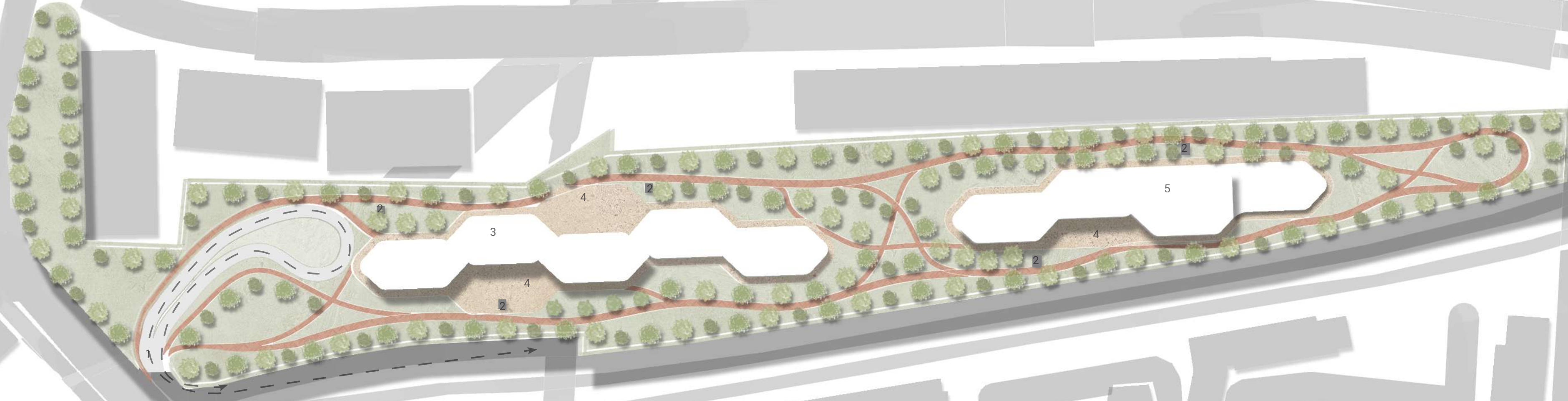
CONCEPT

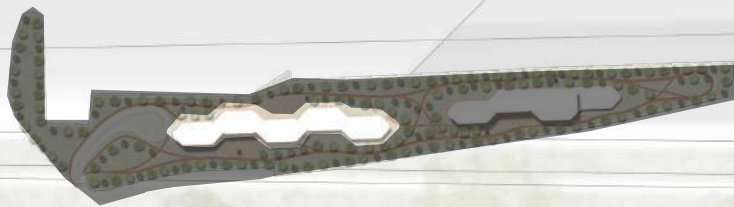
My main idea was to design a building shape that could be seen from most points across the site. In my thesis research, I discovered that visibility is essential for creating a safe environment. I asked myself: what if the building itself became a clear and recognizable element, visible from all directions? To explore this, I sketched the site and placed people at different points, studying how the building would appear from each perspective. Through many iterations, I aimed to find a form where the maximum surface of the walls remained visible from every angle. This process eventually led me to the final shape.



MASTER PLAN

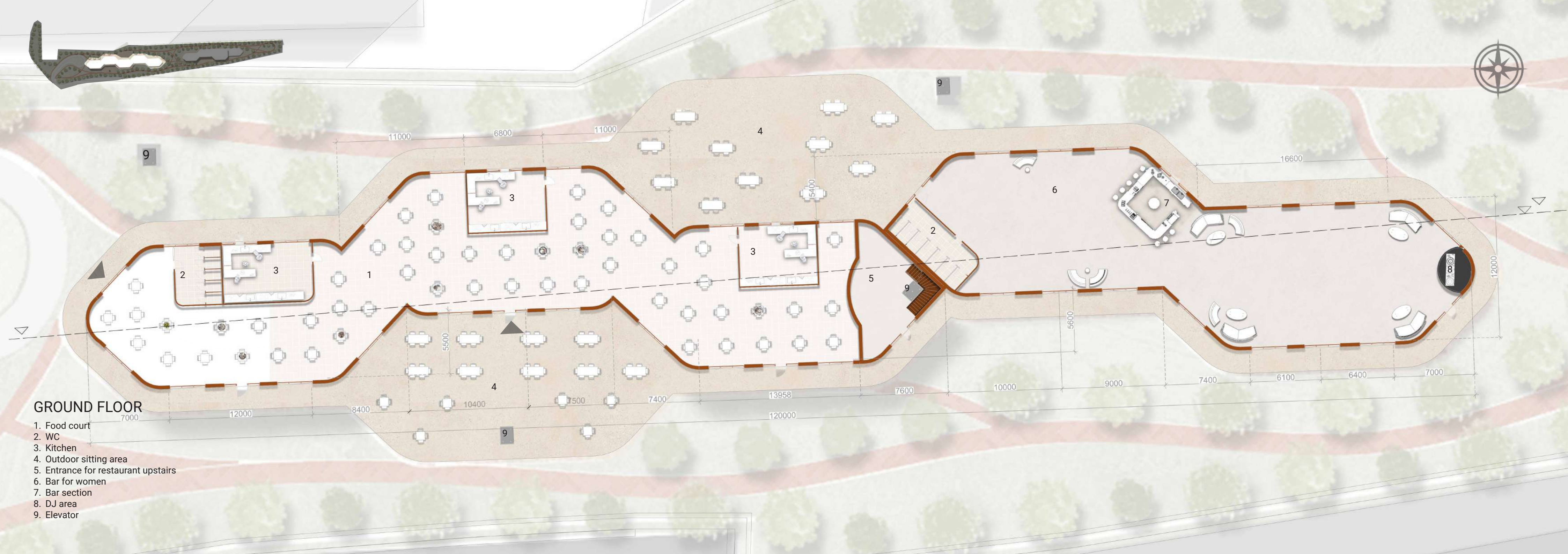
- 1. Entrance to territory (by car or pedestrian)
- 2. Elevator (from underground parking)
- 3. Public building
- 4. Outdoor sitting area
- 5. Private building

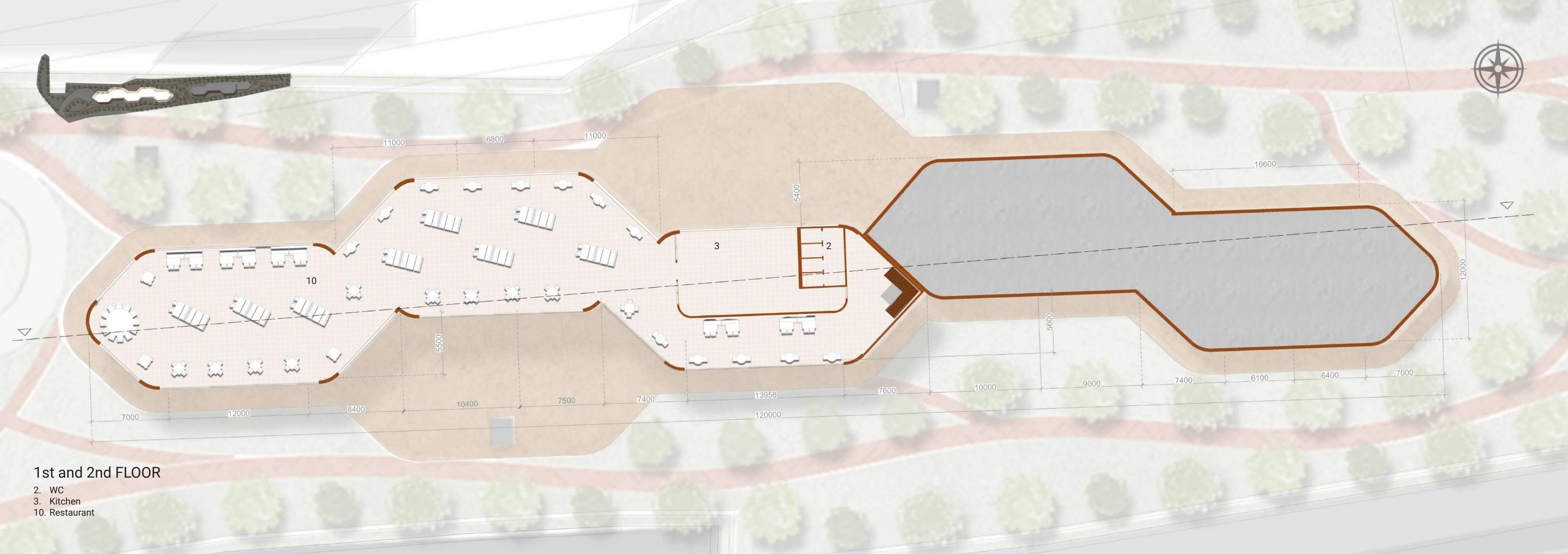




GROUND FLOOR

1. Food court
2. WC
3. Kitchen
4. Outdoor sitting area
5. Entrance for restaurant upstairs
6. Bar for women
7. Bar section
8. DJ area
9. Elevator





1st and 2nd FLOOR

- 2. WC
- 3. Kitchen
- 10. Restaurant



12000
8000
4400
0.000

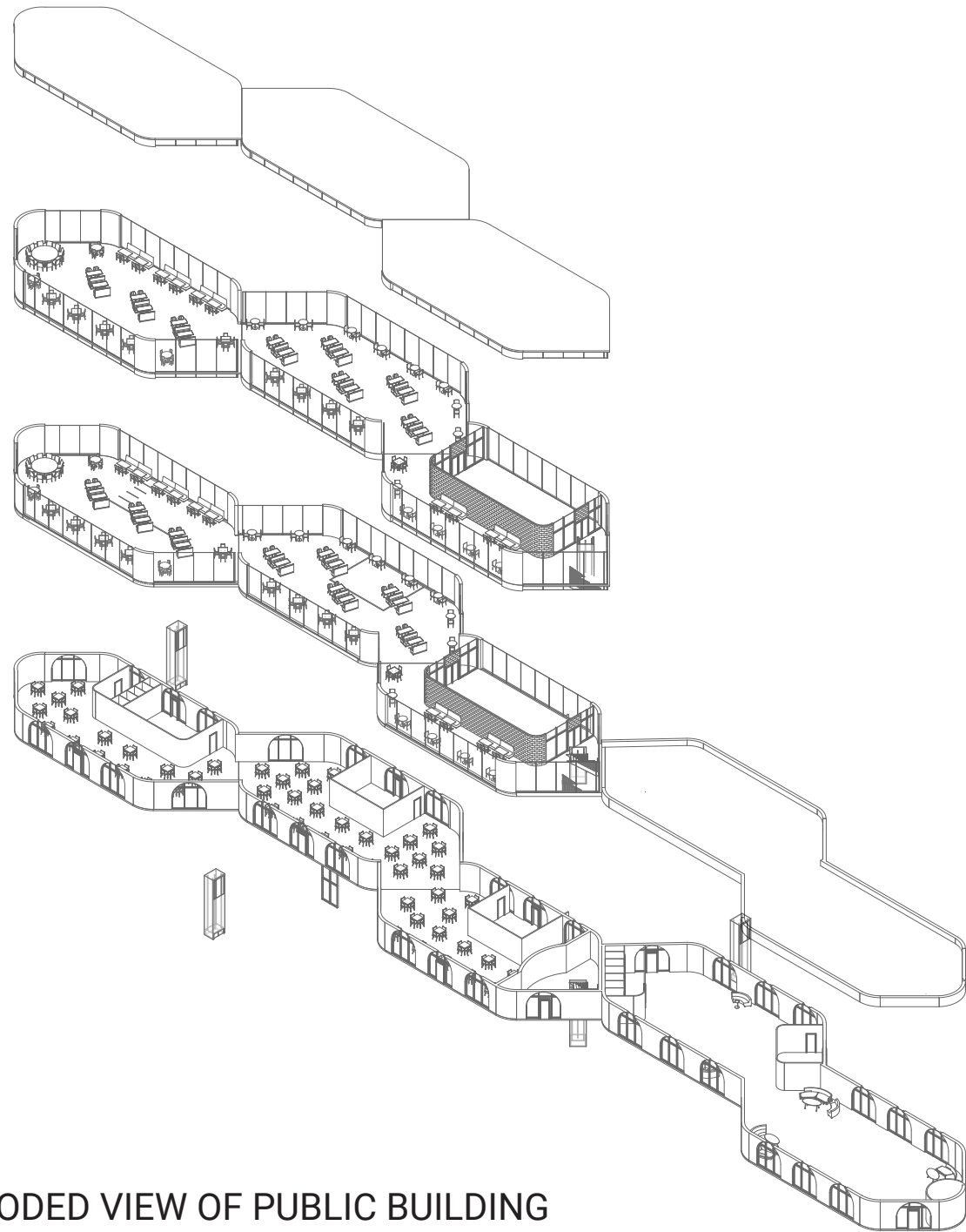
19800
15800
11850
7900
3950
0.000

6400

-10500

-10500

SECTION VIEW



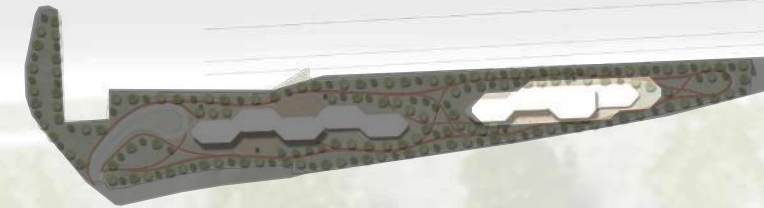
EXPLODED VIEW OF PUBLIC BUILDING



VISUALIZATION

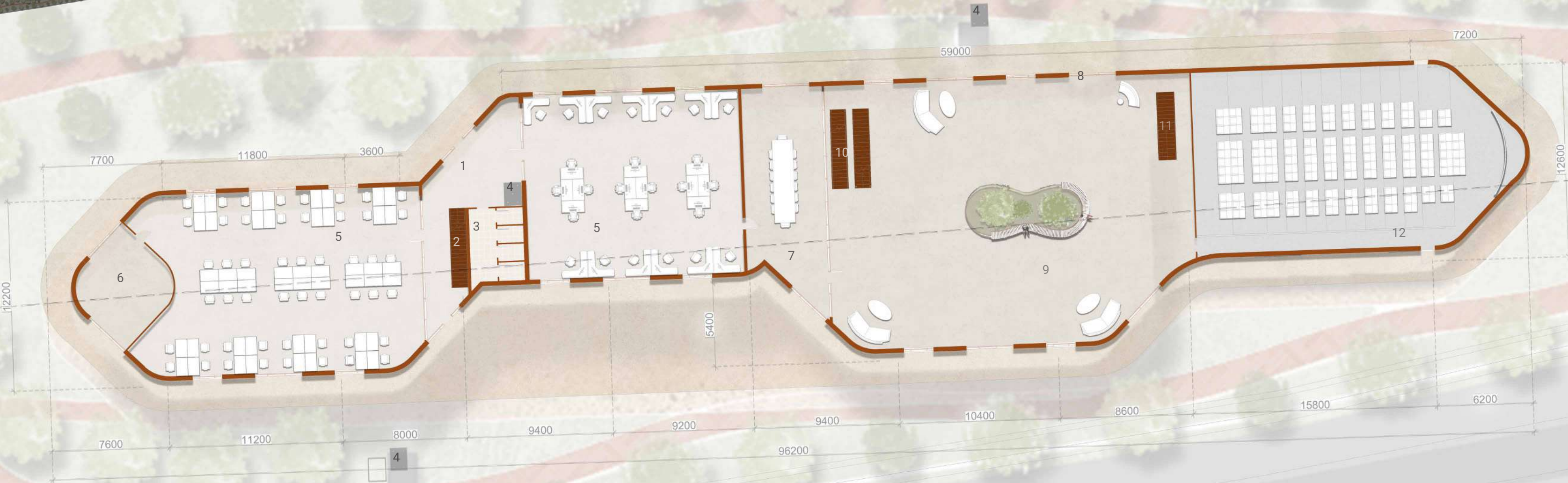


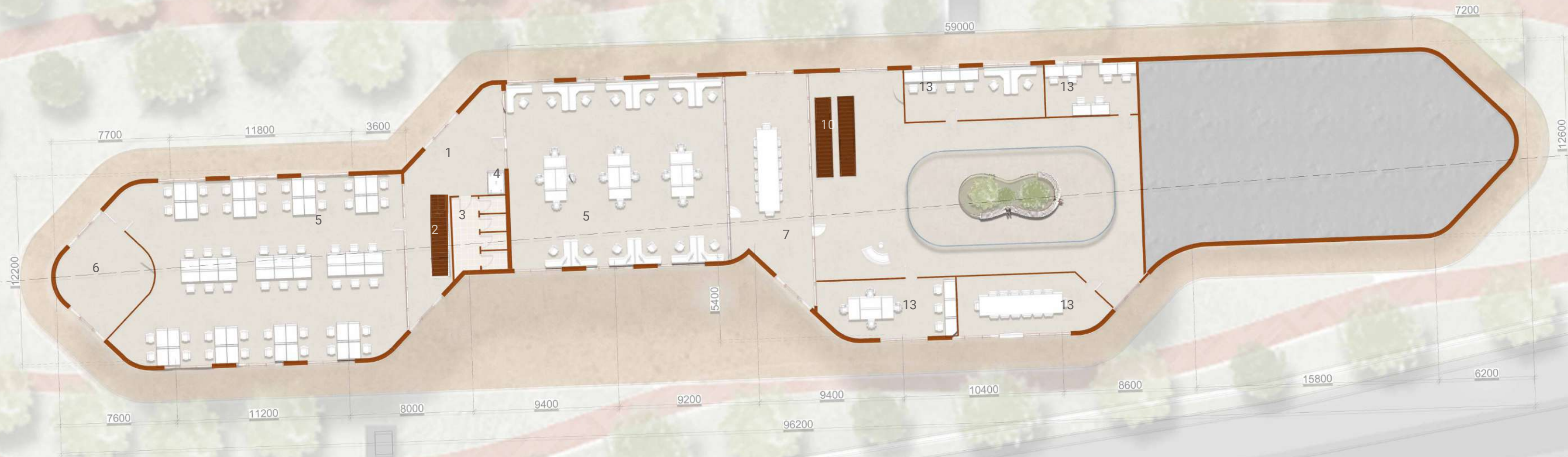
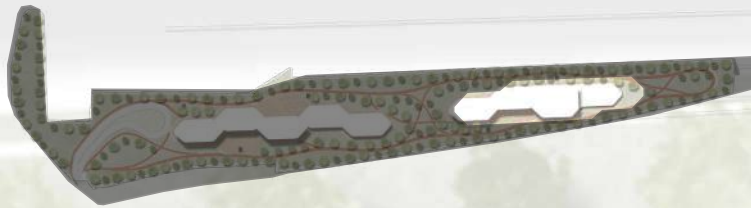
SOUTH ELEVATION



GROUND FLOOR

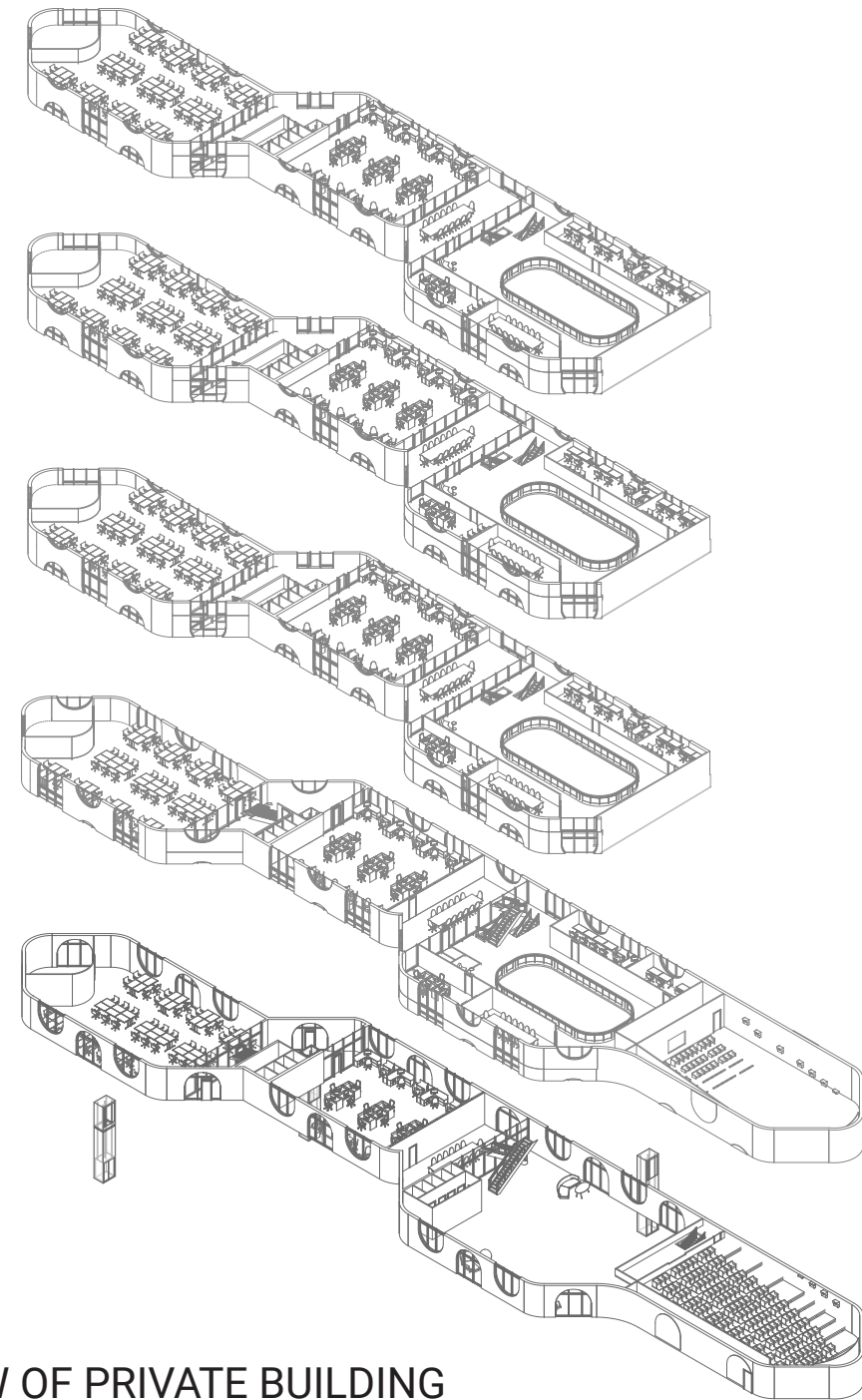
1. Entrance
2. Stairs
3. WC
4. Elevator
5. Office room
6. Head office
7. Conference room
8. Common entrance
9. Launch area
10. Escalator
11. Stairs to projection room
12. Auditorium hall





1-4 FLOORS

- 1. Entrance
- 2. Stairs
- 3. WC
- 4. Elevator
- 5. Office room
- 6. Head office
- 7. Conference room
- 10. Escalator
- 13. Co-working room



EXPLODED VIEW OF PRIVATE BUILDING



VISUALIZATION



19800
15800
11850
7900
6400
3950
0.000

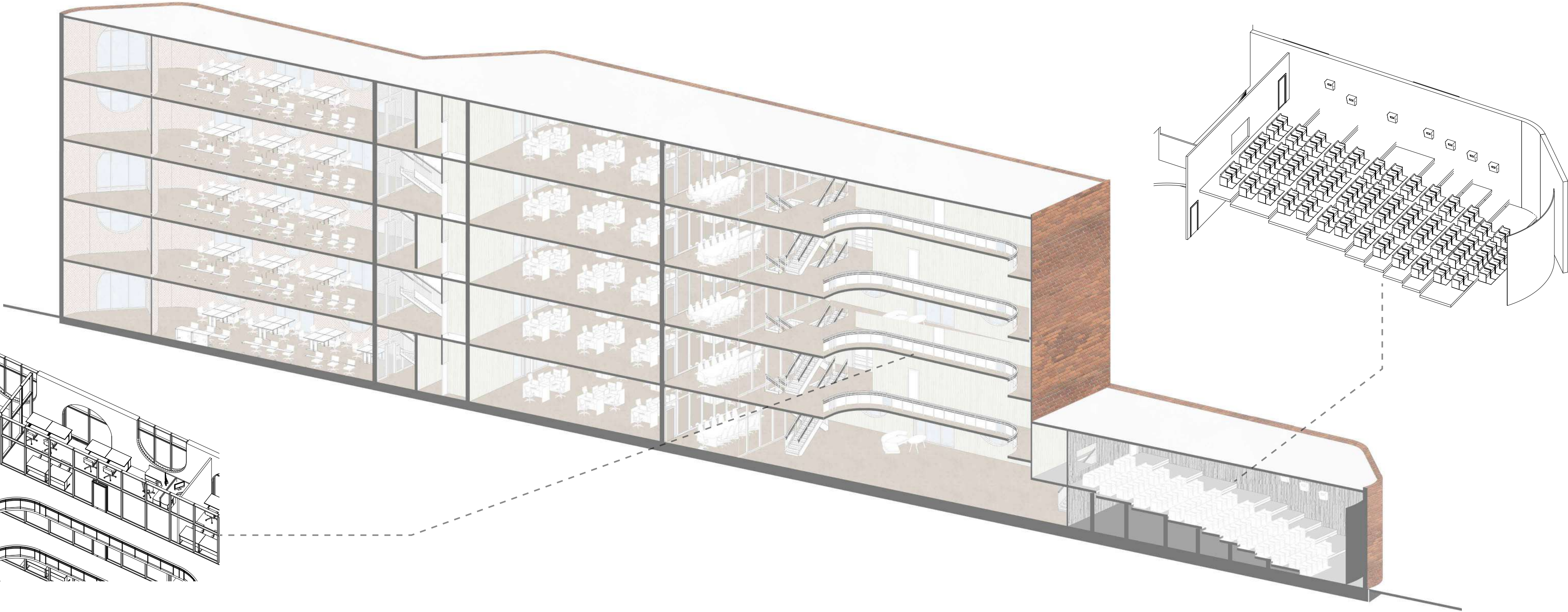
12000
8000
4400
0.000

-10500

-10500

WEST ELEVATION

TECHNICAL PARTS





Generally speaking, my main idea was to create a space that feels open, transparent, and safe: full of glass, visible from all areas, clean and functional. A place that integrates naturally with its surroundings and truly serves a purpose. And I believe that I made it in the end.





Thanks for attention