

**a barrier ~ an obstacle to keep
people contained and apart
from others**

isolation
separation
social distance

entrapment
lack of freedom

enclosure
space restriction

disorientation
panic
stress

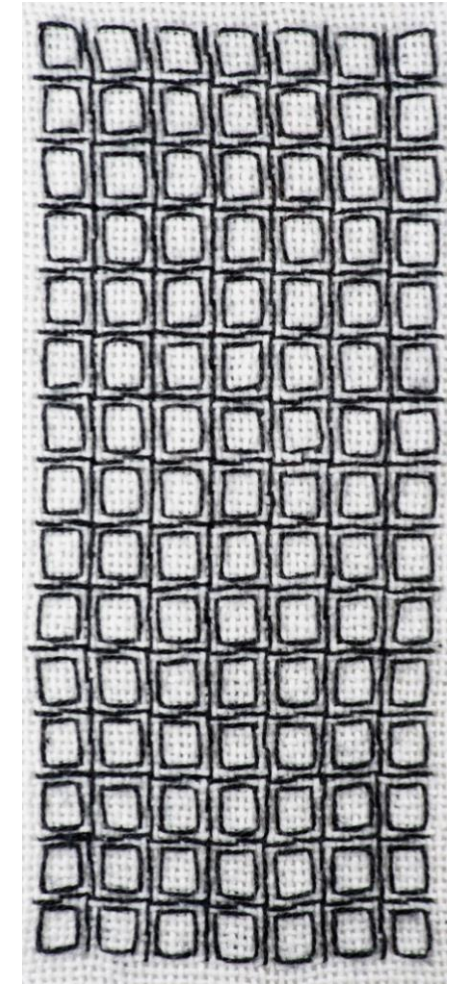
coping with confinement

marking time
opportunities to be creative
transformation
breaking through

**disintegration of the
metaphorical barrier**

materialising the barrier ~ grids

Bars and grids are features to work with on several levels – as geometric shapes, as building blocks, for creating layers when added to other images, and for providing a potentially porous barrier.

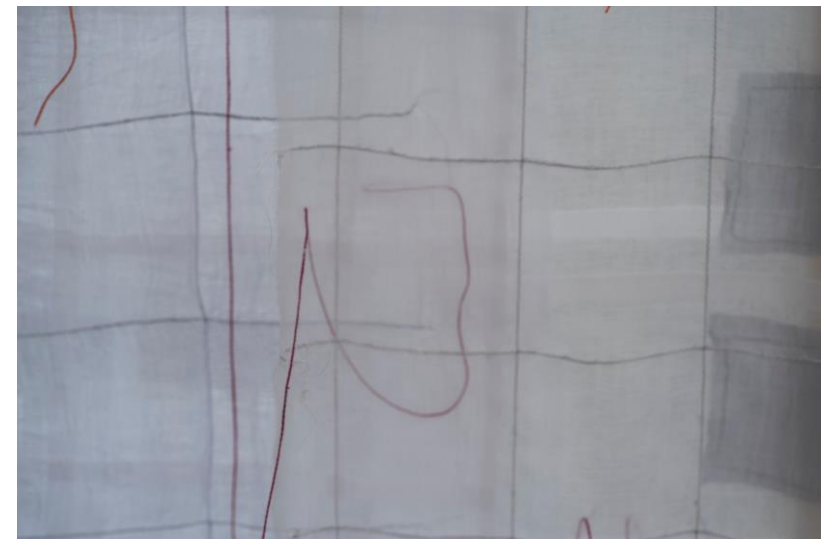


materialising the barrier ~ grids & layers

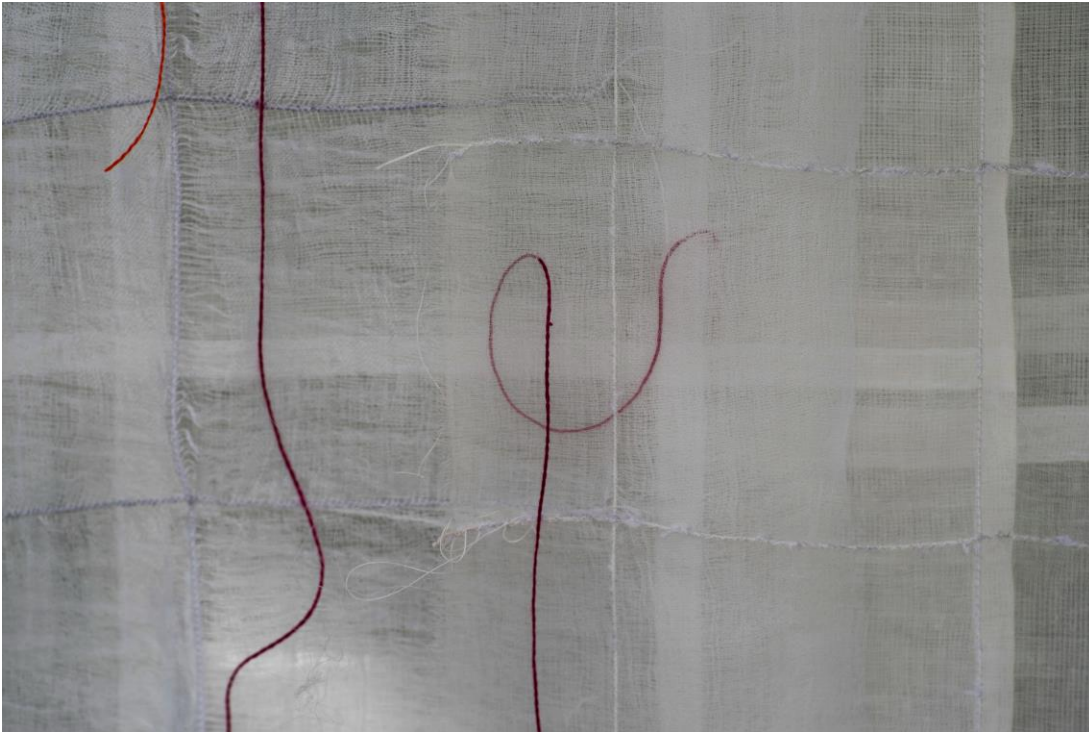


materialising the barrier ~ grids & layers

Multiple transparent layers add depth and increase the feeling of being trapped by curtains of cloth.



materialising the barrier ~ grids & layers



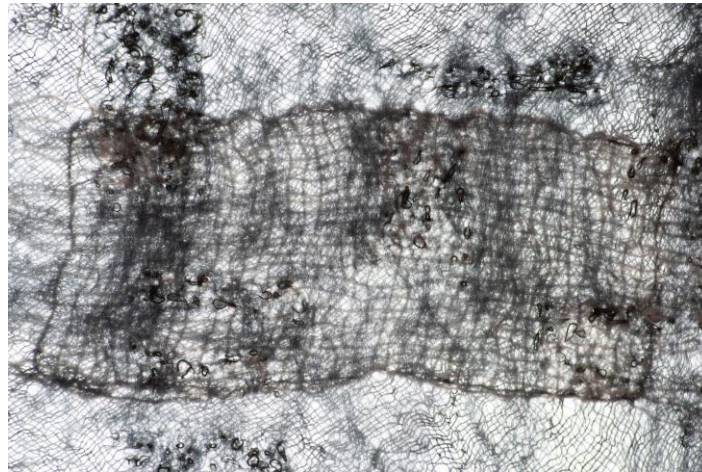
Raw edges and loose threads evoke fragility and vulnerability, as well as a weakening of the grid structure.



breaking through



the porous barrier
the disintegrating grid



breaking through



breaking through



Emergence of wool through grid barriers – woven and darned areas; different layers of varying thickness



**breaking
through**





**breaking
through**

**Emergence of wool
represents
energy/potential
penetrating the
barrier.**



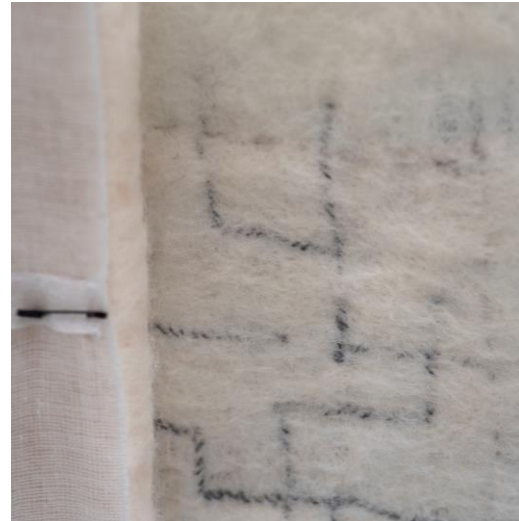
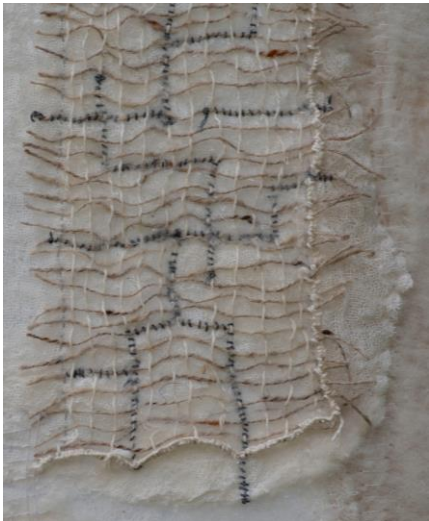
breaking through

Pairs of images show equivalent areas from both sides of the barrier.



A question of identity or perspective....

- which is 'back' and which is 'front'?
- what is revealed and hidden on each side?



confinement

The situation or condition of being enclosed within a limited space, with curbs on movements and activity, and with restricted social interaction and freedoms.



looking in from outside



looking out from inside

the isolated soul

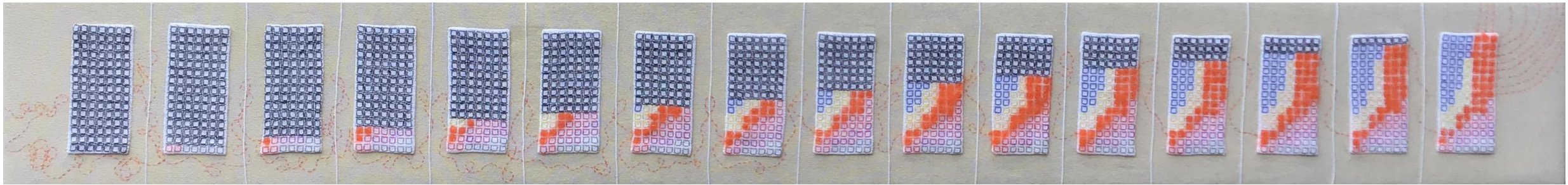


looking in from outside

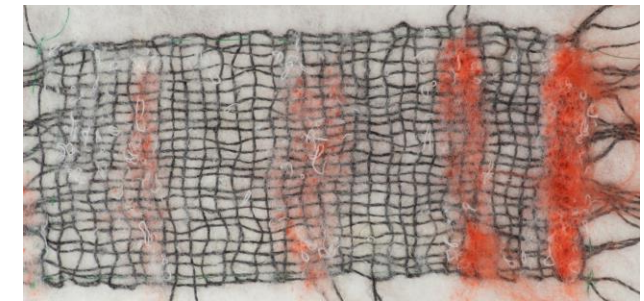


releasing creative potential

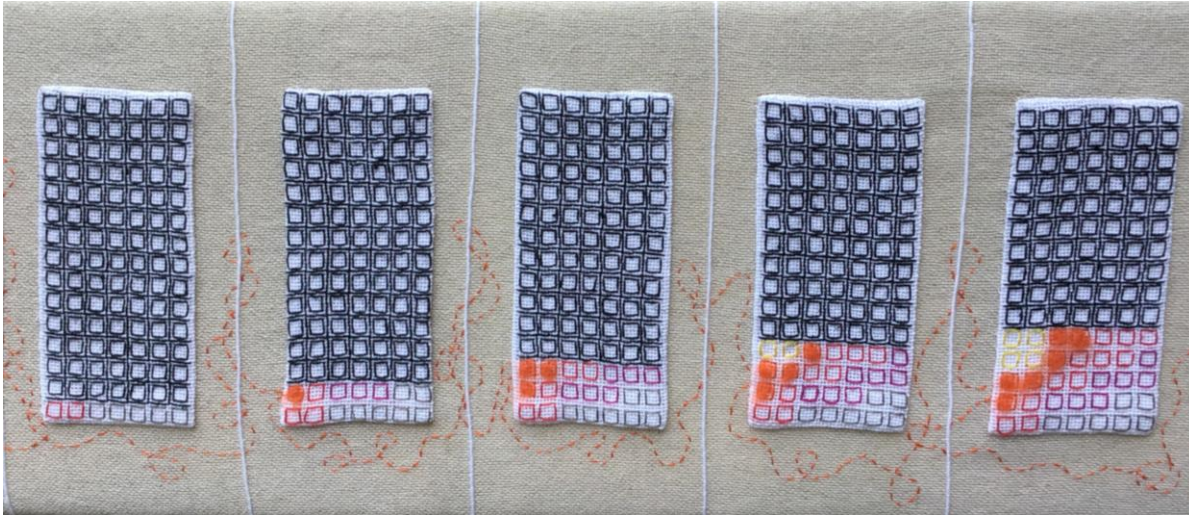
marking time



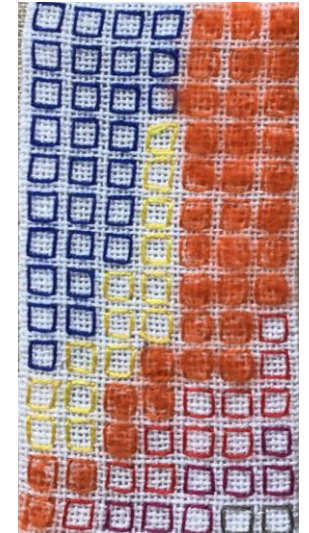
timeline
counting down the weeks
removing the barrier



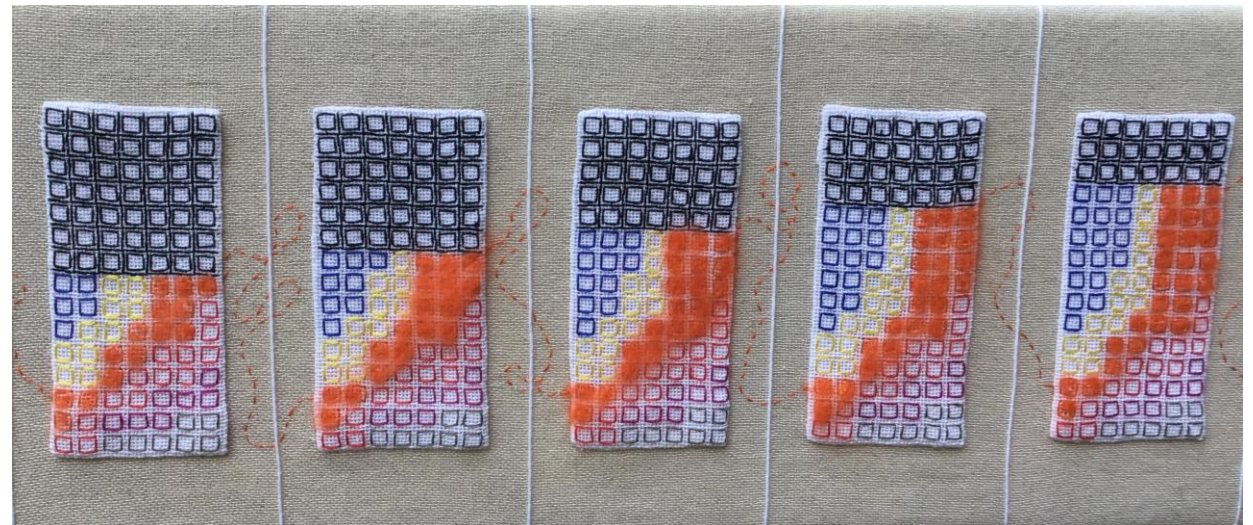
releasing creative potential

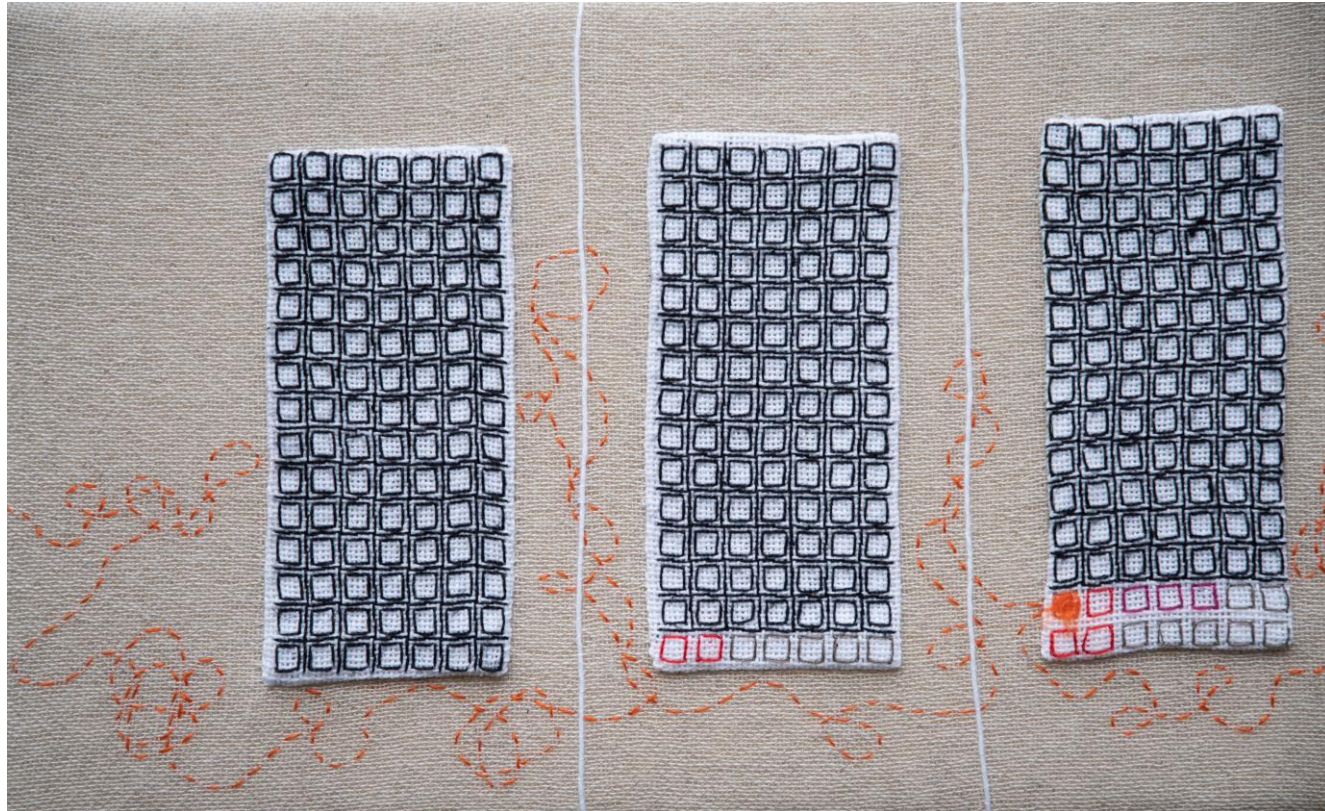


Wool emerging through orange squares, conveying latent energy and inner resource which is eventually released.



The black grid - the retaining barrier - is reduced and removed over time to reveal the colours 'underneath' until only brighter colours remain.

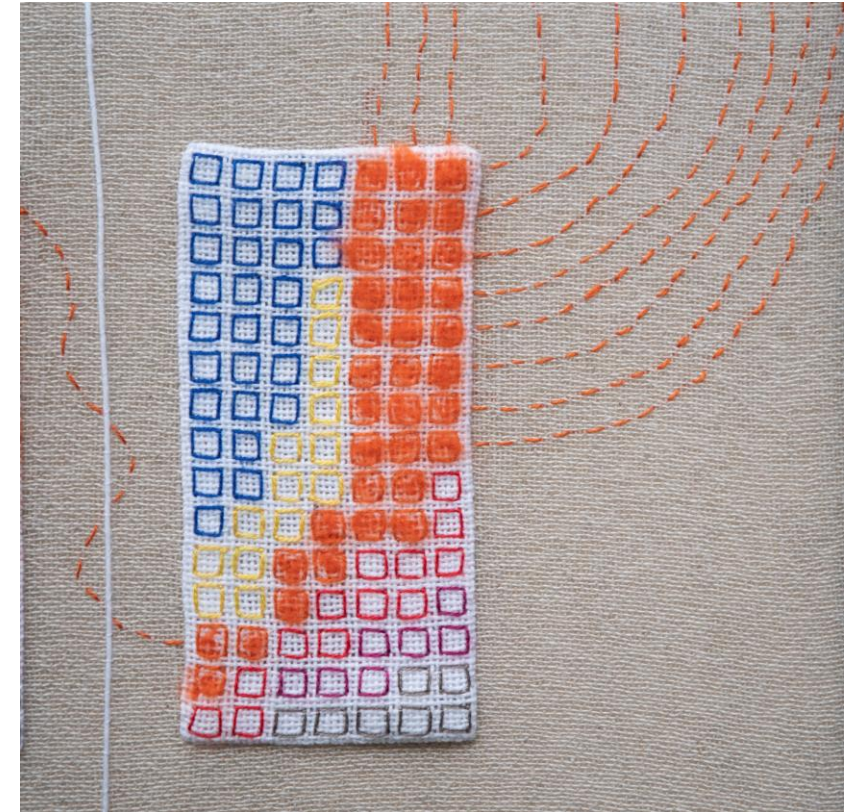




A continuous line of running-stitch reflects a disorganised and confused start; it becomes less tangled as the piece progresses until several lines emerge to convey a freedom to pursue any direction.

releasing creative potential

stitched pathway



“... despite boundaries, ‘inside’ is actually limitless, where minds are always free.”

Antony Gormley