

WORKING PLACE



The importance of a workplace design is that it provides employees with a comfortable working environment.

Lighting, furnishings, colors, ventilation, and other design parameters can be taken into consideration to make the space more pleasant, comfortable and efficient. The design of an office provides a solid foundation for corporate success.



THE HISTORY OF OFFICE DESIGN

The way we work in 2022 has evolved beyond any conceivable recognition to the workplace 50 years ago. The office of today is no longer a building where everyone congregates, but also our homes, the local coffee shop, and numerous other "third places" brought together in virtual meeting places. So where does the history of office design begin? It's perhaps useful to retrace our steps to the very first office.

1. The first office



1. The first offices originated in ancient Rome.
2. The first office building was built in 1726 in London and became known as The Old Admiralty Office.



2. Taylorism and the rise of the open-plan office

1. 'Taylorism', a methodology created by mechanical engineer, Frank Taylor, who sought to maximise industrial efficiency.
2. There has been much criticism of Taylor's approach, as it failed to take into consideration human and social elements.

The evolution of open-plan working



1. This evolution was embodied by the opening of The Johnson Wax company's open-plan office, designed by Frank Lloyd Wright in 1939.
2. As skyscrapers and other large commercial buildings were developed.

4. Burolandschaft

In the early 1960s, the workplace really started to change with the adoption of a more socially democratic layout which consequently encouraged a great degree of human interaction and engagement.



As Burolandschaft evolved, a new approach that became known as the Action Office began to emerge.

1. The influx of female workers into what was traditionally a male-dominated workplace in the 1960s also led to subtle changes in how the workplace was designed.



The Action Office

6. The Cubicle Farm

The availability of cheap, but effective modular walls alongside an increased focus on profitability at the expense of working conditions are seen as the key factors behind the complete shift in office design, suffered throughout the 1980s.



As technology developed, workers became more mobile and ushered in a golden period for office design where new, more flexible ways of working such as Agile Working and Activity Based Working (ABW) became increasingly popular.

1. As staff became more mobile, it became evident that they could work anywhere and were no longer wed to their desk.

Office Design and Technology

8. The History of Office Design in 2022

1. As the history of office design continues to unfold, it has reached a point where the modern workplace takes inspiration from the home, through the use of warm colours, intimate lighting and soft seating.

2. There has been a significant rise in biophilic office design and companies bringing a little of the outdoors into the work environment.



TYPES OF SPACES FOR WORKING PLACE

1. Poor space utilization

The solution:

- O. Analyzing your existing space
- O. Assessing your ways of working
- O. Make data-driven design choices

The solution:

- O. To reduce noise transfer
- O. Incorporate acoustic treatments
- O. Smaller pockets of space in quieter parts of the office



3. No reflection spaces and quiet areas

The solution:

- O. A more fluid, more diverse destination than ever before
- O. To support neurodiverse requirements in the workplace



The solution:

- O. Integrate your identity with your office
- O. Set a clear vision of the environment you want to create

5. Not enough workspaces

The solution:

- O. To reduce noise transfer
- O. Incorporate acoustic treatments
- O. Smaller pockets of space in quieter parts of the office



6. Insufficient natural light

The solution:

- O. To redirect natural light
- O. Use of glass office systems
- O. Use energy-efficient lights



2. Noisy open plan spaces



The solution:

- O. Choose a colour that will complement
- O. Understand and harmonize the brightness and intensity of colors

7. Improper visual design

8. Bad acoustics

The solution:

- O. Controlling acoustics is installing office partition systems and suspending ceilings systems.



4. Lack of culture and community



The solution:

- O. By incorporating the best office interior design and small office interior design ideas.

9. Decreased employee satisfaction and morale

10. Informal spaces

The solution:

- O. Include leisure areas
- O. The next level office renovation, design, and refurbishing



CASE STUDIES

Kuala Lumpur, Malaysia

Year: 2014

Designed: M Moser Associates

To reflect the local Malaysian culture

CONCEPT: Bring elements of mother nature into the office environment.



Amsterdam, Netherlands

Year: 2014

Designed: D/Dock

CONCEPT: Each floor of this office is centred around a 'cave' which represents the various departments.



Orange County, United States

Year: 2015

Designed: San Francisco

By Rapt Studio

CONCEPT: It's decorative pieces pays homage to it's Californian beach culture



Tel Aviv, Israel

Year: 2013

Designed: Evolution design

Google's Tel Aviv office space

CONCEPT: The designers said "nearly 50% of all areas have been allocated to crease communication landscapes, giving countless opportunities to employees to collaborate and communicate".

Dublin, Ireland

Year: 2013

Designed: Henry J.Lyons Architects

CONCEPT: The lobby houses giant lettering of the business name 'Google' which has been turned into a cool looking reception and seating area.



Tokyo, Japan

Year: 2013

Designed: Klein dytham Architecture

CONCEPT: Tokyo's offices feature heavily on distinctive wall graphics and, surprisingly, fabrics on the wall.



CASE STUDIES

Google office in central London

Spaces in Google office

Designed: By Big and Heatherwick

Reception

Time to relax



Outside space

Design that Encourages Play



Conference area

Luxury



Wroclaw, Poland

Year: 2014

Designed: Massive design

CONCEPT: The general design of the Wroclaw offices is quite traditional but they do feature some elements that would keep many of us envious, such as the massage room.



Moscow, Russia

Year: 2012

Designed: Evolution design

CONCEPT: It's practical yet comfy environment encourage productivity and collaboration



Haifa, Israel Design by:

Year: 2012 Setter architects

CONCEPT: the materials used for the office design are from recycled parts such as disassembled windows and doors.



SITE DOCUMENTATION

LOCATION: Northern Bypass road
Multan near the Motorway
and the main Multan city. Site is surrounded by
multiple residential societies and is situated in
relevant Commercial context.

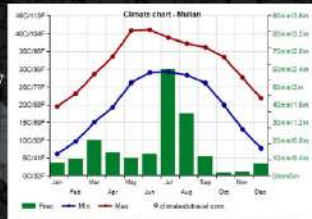
Site Area: 8.6 acre
Covered Area : 65%

CLIMATE DATA

Average Temperature in
Multan The hot season
lasts for 3.5 months, from
April 24 to August 9,
with an average daily
high temperature above
99°F. The hottest month of
the year in Multān is June,
with an average high of
106°F and low of 85°F.



Rainfall
To show variation within the
months and not just the monthly
totals, we show the rainfall
accumulated over a sliding 31-day
period centered around each day
of the year. Multān experiences
some seasonal variation in
monthly rainfall.



Neighborhood Context



SITE ANALYSIS



1. Mud Bricks

A mudbrick or mud-brick is an air-dried brick, made of a mixture of mud mixed with a binding material such as rice husks or straw. Mudbricks are known from 9000 BCE. Since around 5000–4000 BCE, mudbricks evolved into fired bricks to increase strength and durability.



1. Bricks

A brick is a type of construction material used to build walls, pavements and other elements in masonry construction.

Bricks are usually produced at brickworks in numerous classes, types, materials, and sizes which vary with region, and are produced in bulk quantities



LOCAL MATERIAL

3. Wood

Wood's qualities probably make it the most outstanding material for construction. As a renewable building resource, wood is environmentally friendly and consumes the least amount of energy during manufacture. Although new materials have emerged over time, wood still remains one of those most used today. In both domestic residences and public spaces or buildings.



4. Mud Plaster

Earthen plaster is a blend of clay, fine aggregate, and fiber. Other common additives include pigments, lime, casein, prickly pear cactus juice, manure, and linseed oil. Earthen plaster is usually applied to masonry, cob, or straw bale interiors or exteriors as a wall finish.



5. Strawboard Panel

A strawboard panel is a rigid building panel made of a solid core of compressed wheat (or rice) straw covered with recycled paper liners which are stuck to both sides with non-toxic, water-based glue.



6. Jaali



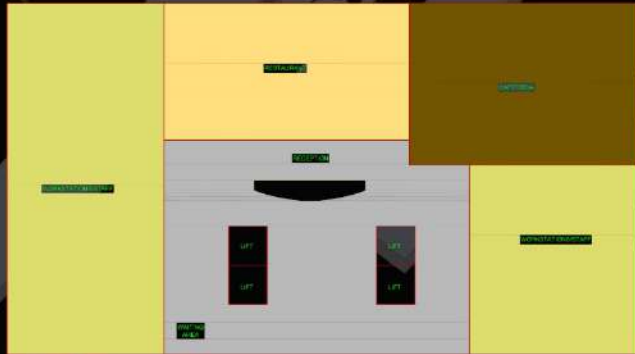
A jaali lets in adequate natural light and ventilation without the use of more expensive conventional windows systems and also provides security in lieu of the more expensive metal grill work used today.

7. Bamboo

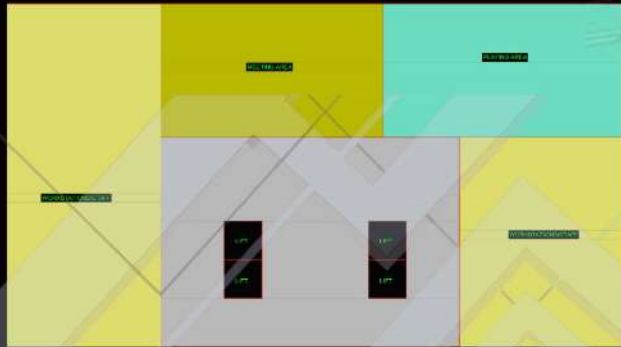
Bamboo is a strong and durable building material with higher tensile strength than steel, compressive properties stronger even than concrete.



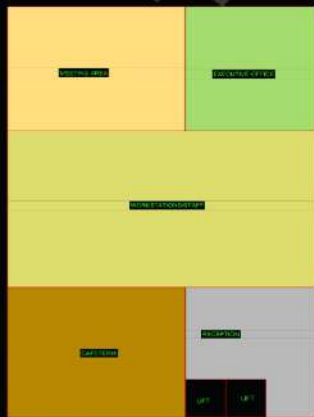
OFFICE PROPOSAL 1



GROUND FLOOR



FIRST FLOOR

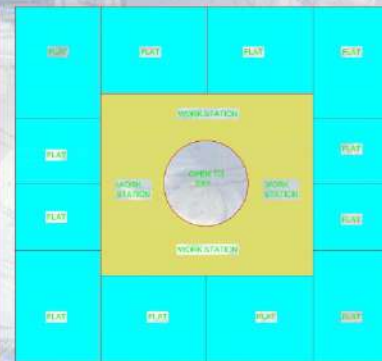


OFFICE PROPOSAL 2

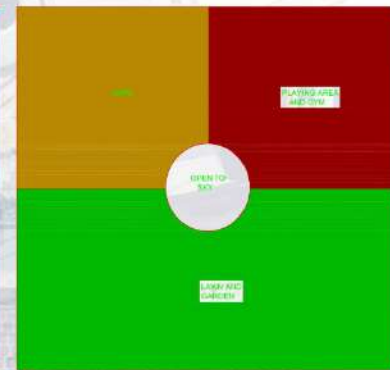
OFFICE PROPOSAL 3



FIRST FLOOR

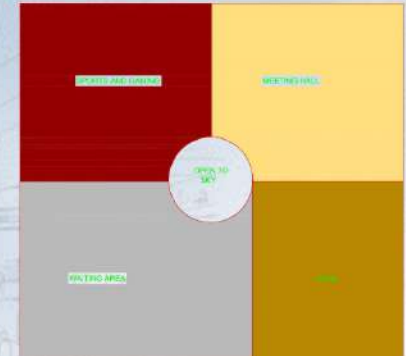


SECOND FLOOR



TOP FLOOR

OFFICE PROPOSAL 4



GROUND FLOOR

- 1-SUSTAINABILITY
- 2-DONT TRAVELLING
- 3-EVERY FACILITY IN OFFICE BUILDING
- 4-USING SUN LIGHT
- 5-USE SOLAR PANEL FOR ELECTRICITY.

Office markets & public policy [electronic resource]
 Author Jones, Colin, 1949
 Jan 13, 2013
 Chichester, West Sussex : John Wiley & Sons Inc., 2013.
 Format: Electronic Resources
[Connect to Ebook](#)
 Available: 1

The energy wise workplace [electronic resource] : practical and cost-effective ideas for a sustainable and green workplace
 Author Dondorp, Jeff, 1947.
 Lanham, Maryland : Rowman & Littlefield, 2017.
 Format: Electronic Resources
[Connect to Ebook](#)
 Professional Reviews

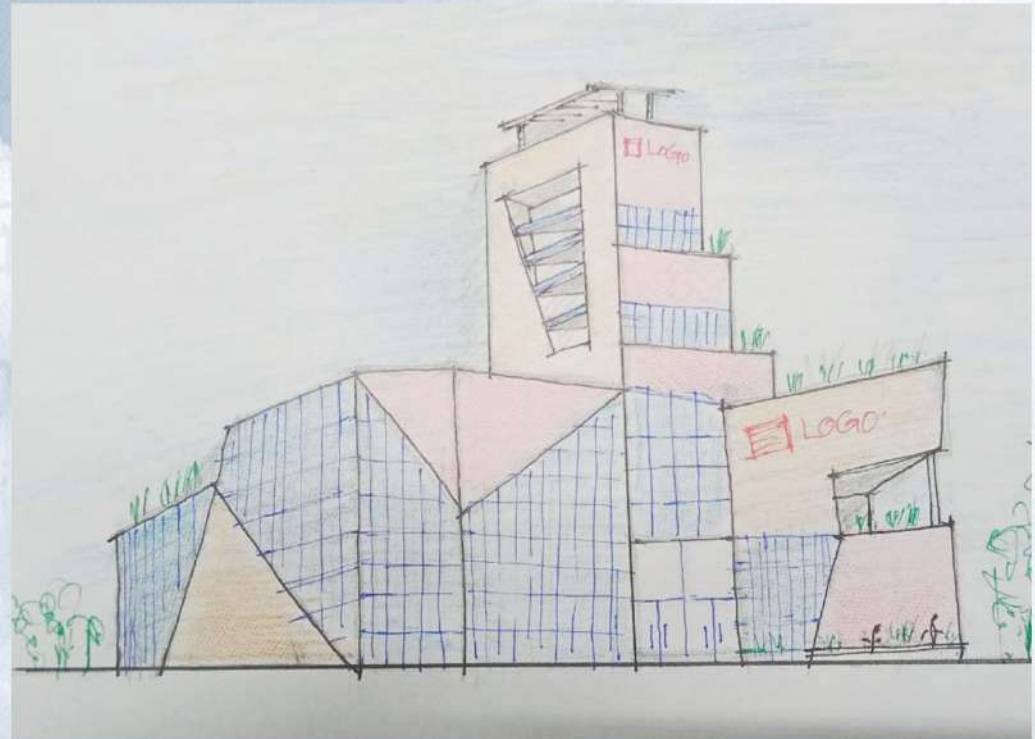
Offices [electronic resource]
 Author Cowell, Aneke, 1950.
 Berlin : DGM, 2013.
 Format: Books
 Modern workspaces need to handle organizational complexity while providing the newest technology and equipment. More than that, office buildings are also the architectural setting.
 Summary Text
 Available: 1

The Apostate [electronic resource]
 Figa Figa, 2015.
 Format: Electronic Resources
 Mode of access: World Wide Web.
 Tamayo knows he needs to change the person he has become under the pressure of his parents' expectations. His opposition manifests itself in the increasingly quiet quest of form.

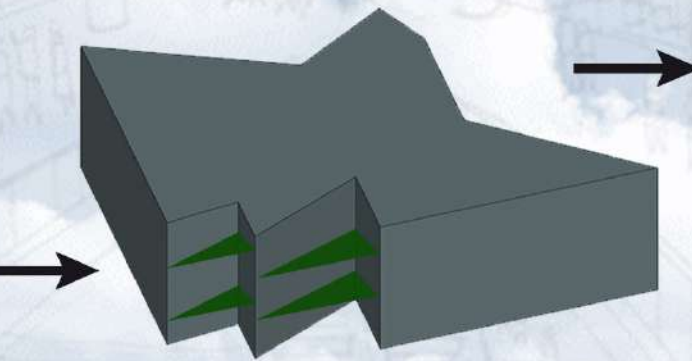
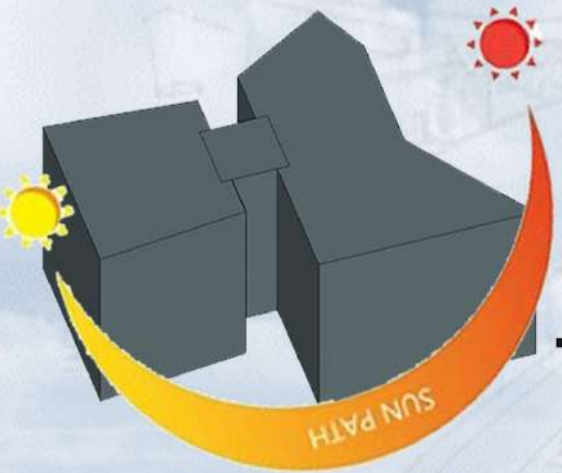
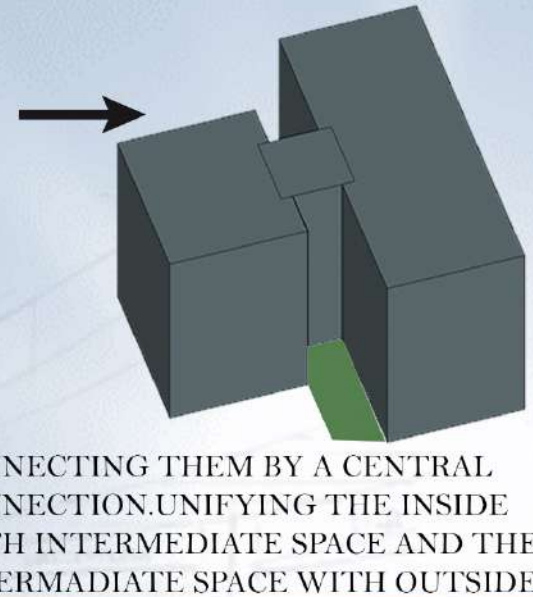
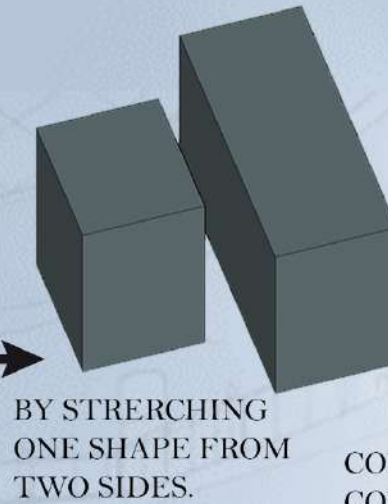
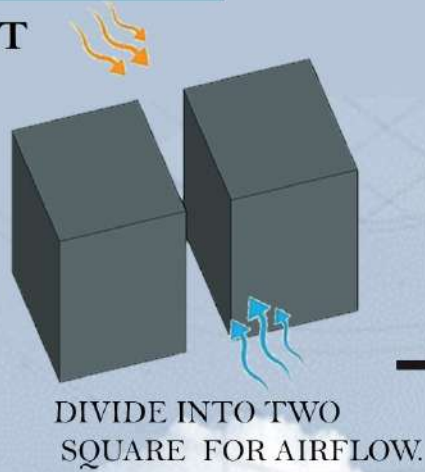
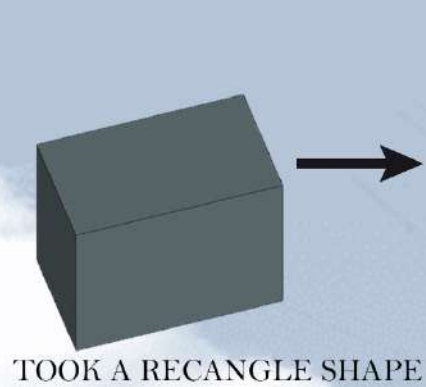
Basics office design [electronic resource]
 Author Birkfeld, Bart.
 Basel, Switzerland : Birkhauser, 2018.
 Format: Electronic Resources
[Connect to Ebook](#)
 Summary Available As
 Available: 1

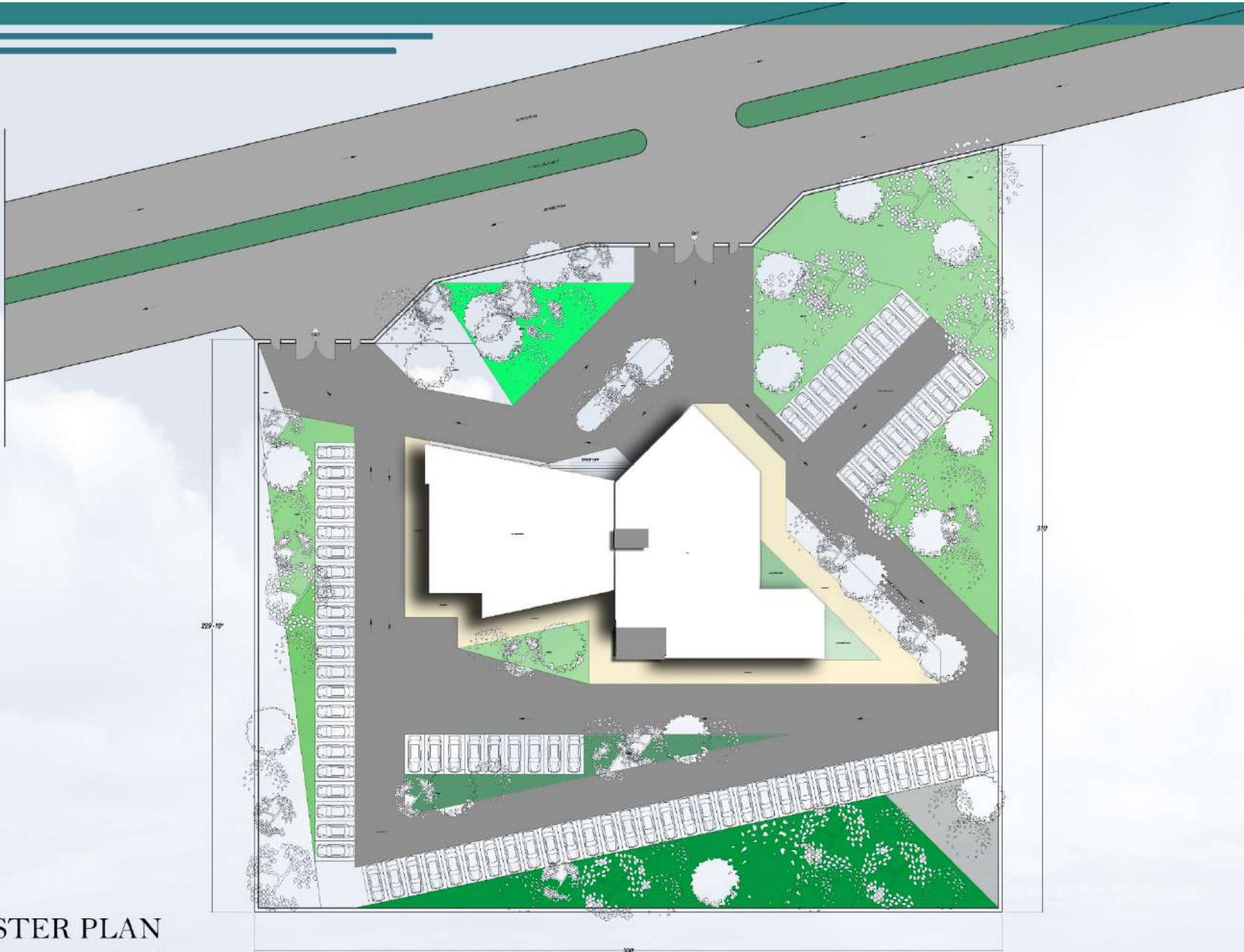
BOOKS REFERENCES

INITIAL SKETCHES

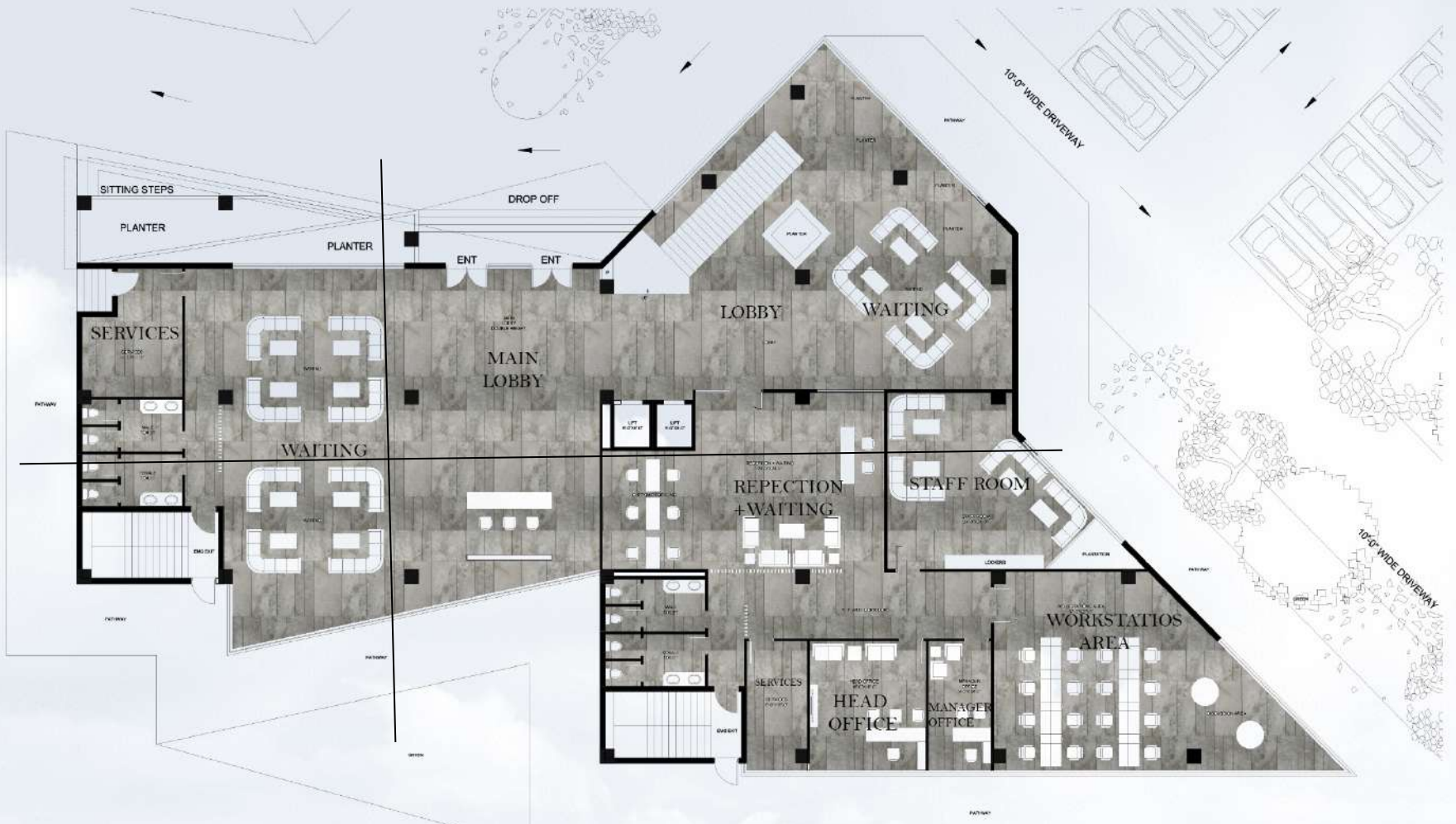


FORM DEVELOPMENT





MASTER PLAN
SCALE 1/32"=1'



GROUND FLOOR PLAN

BUSINESS DEVELOPMENT DEPARTMENT

SCALE 1/16" = 1'



FIRST FLOOR PLAN

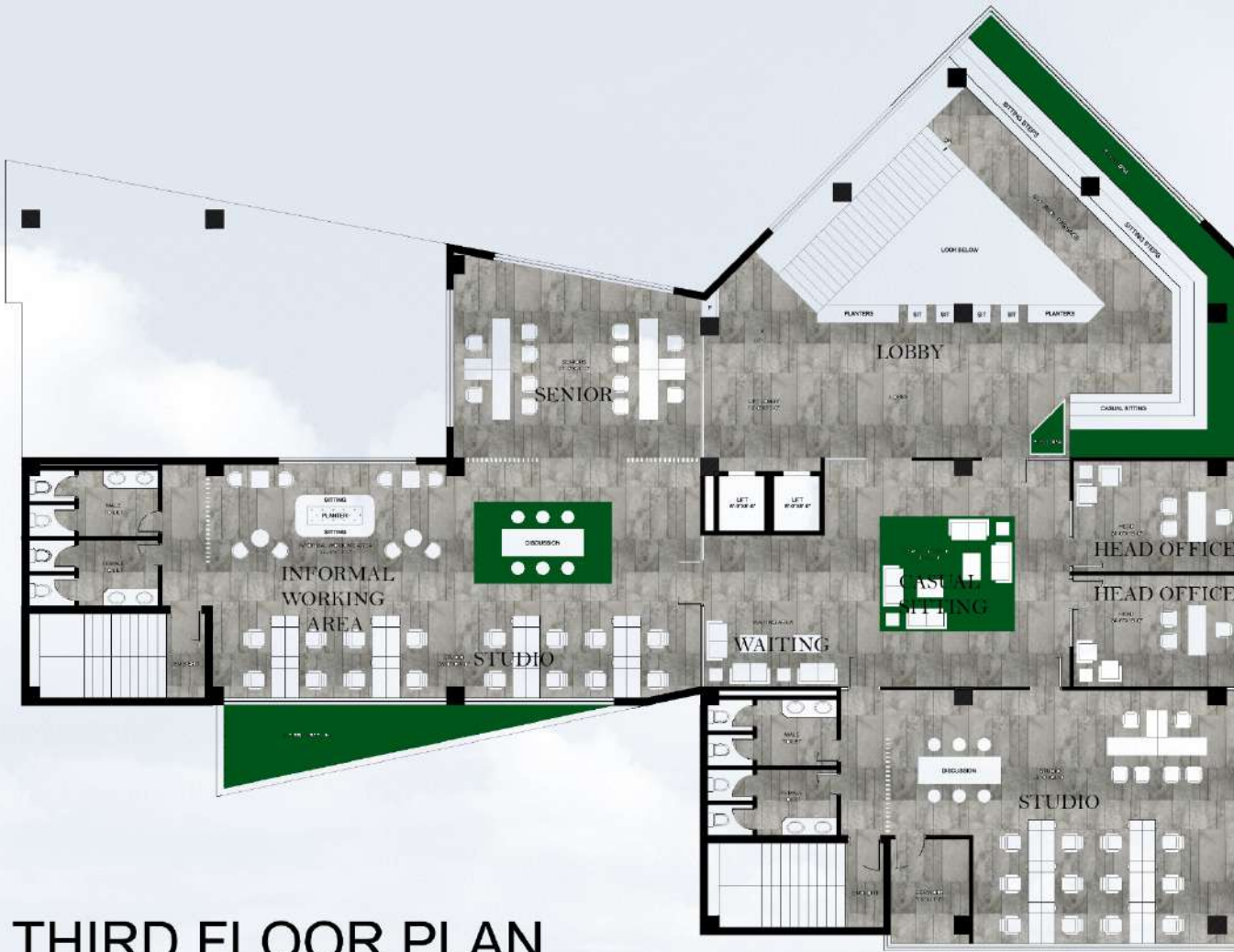
ACCOUNTS AND FINANCE DEPARTMENT

SCALE 1/16"=1'



SECOND FLOOR PLAN
ENTERTAINMENT FLOOR

SCALE 1/16"=1'



THIRD FLOOR PLAN UX/UI DEPARTMENT/GRAPHIC

SCALE 1/16"=1'



FOURTH FLOOR PLAN
IT DEPARTMENT/STUDIOS
 SCALE 1/16"=1'

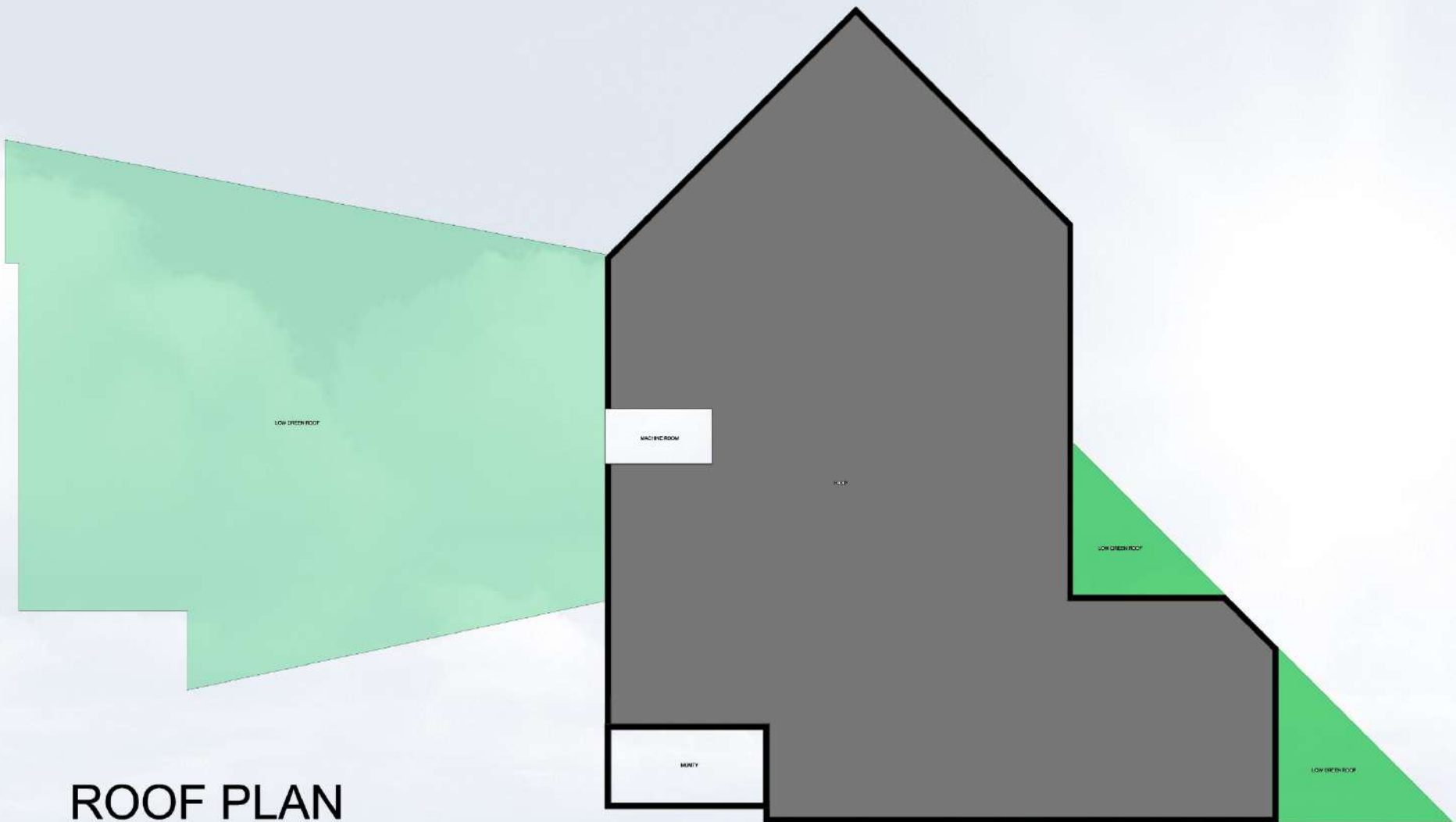


FIFTH FLOOR PLAN
IT DEPARTMENT/STUDIOS
 SCALE 1/16"=1'



SIXTH FLOOR PLAN BOARD OF DIRECTORS

SCALE 1/16"=1'



LOW GREEN ROOF

LAWYER ROOM

HALL

LOW GREEN ROOF

KITCHEN

LOW GREEN ROOF

ROOF PLAN

SCALE 1/16"=1'



SOUTH SIDE ELEVATION



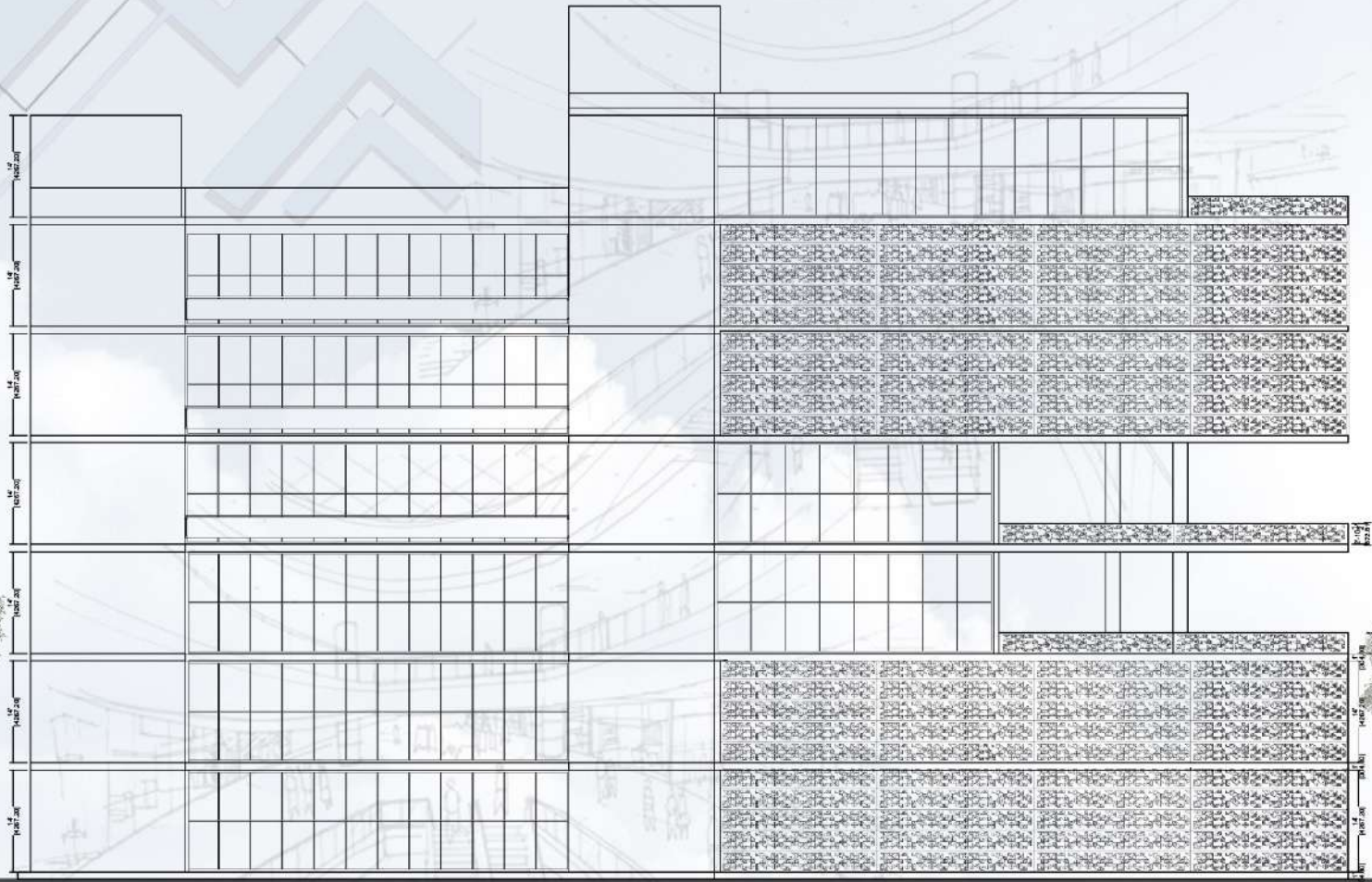
EAST SIDE ELEVATION



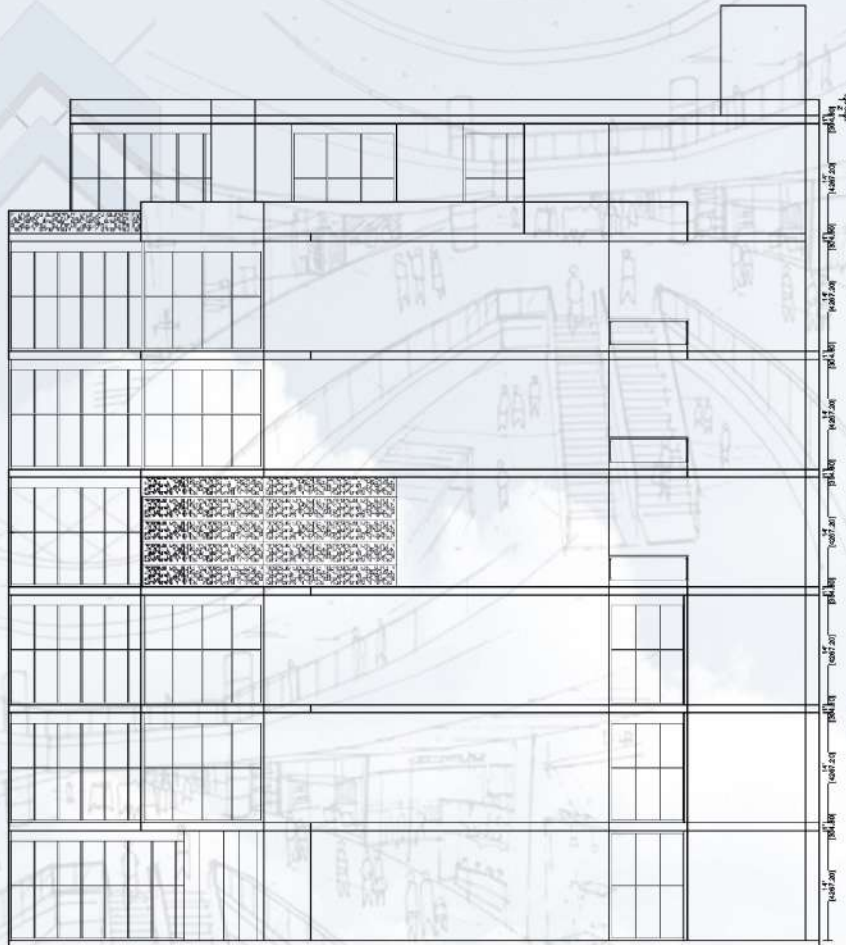
NORTH SIDE ELEVATION



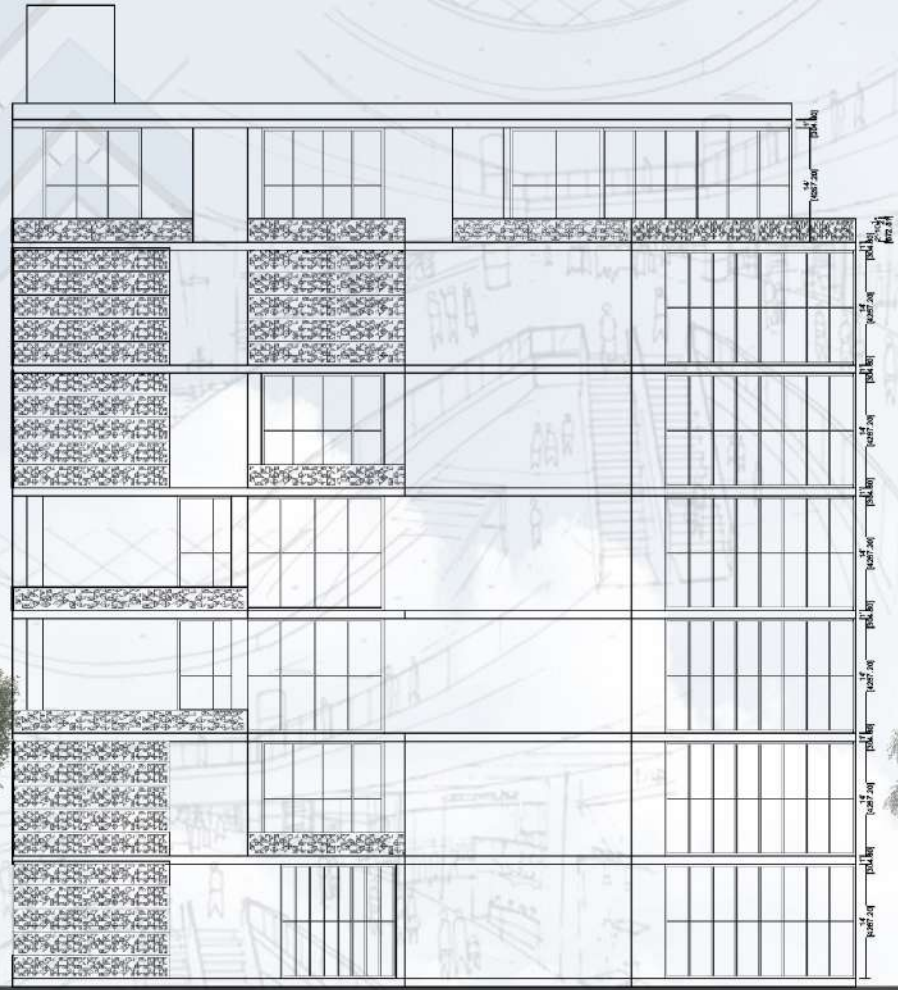
EAST SIDE ELEVATION



BACK ELEVATION



LEFT SIDE ELEVATION

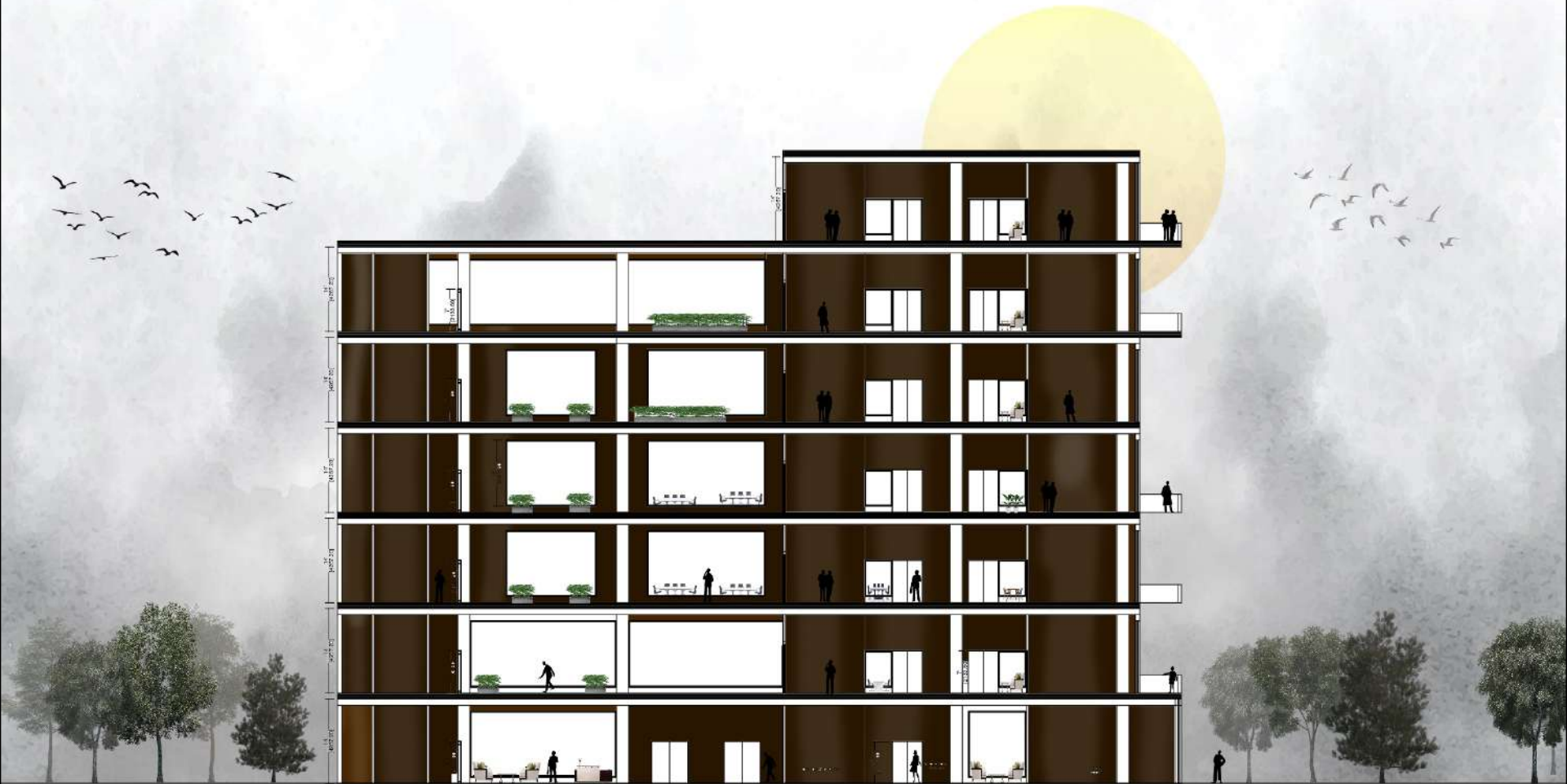


RIGHT SIDE ELEVATION



FRONT ELEVATION

SECTION A-A



SECTION B-B

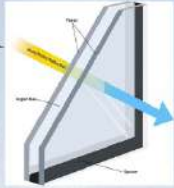




GREEN TERRACES

The plants on green roofs can capture airborne pollutants, atmospheric deposition, and also filter noxious gases.

The temperature moderating effects of green roofs can reduce demand on power plants, and potentially decrease the amount of CO₂ and other polluting by-products being released into the air.



Double glazed windows and doors are made from two panes of glass that are separated by a layer of air or gas and then sealed.



A jaali lets in adequate natural light and ventilation without the use of more expensive conventional windows systems and also provides security in lieu of the more expensive metal grill work used today.



Mud plaster is a blend of clay, fine aggregate, and fiber. Other common additives include pigments, lime, casein, prickly pear cactus juice, manure, and linseed oil. Earthen plaster is usually applied to masonry.

MAIN ENTRANCE



3D RENDER



3D RENDER



3D RENDER



3D RENDER

1207202552



MAIN LOBBY & WAITING AREA



MAIN LOBBY & WAITING AREA



MAIN LOBBY & WAITING AREA



WORK STATION/ STUDIO



WORK STATION/ STUDIO



WORK STATION/ STUDIO



WORK STATION/ STUDIO



RESTAURANT



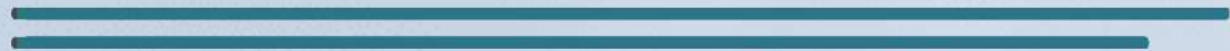
RESTAURANT



RESTAURANT



RESTAURANT



RESTAURANT



RESTAURANT



LIBRARY



LIBRARY



LIBRARY



LIBRARY



CEO OFFICE



CEO OFFICE



CEO OFFICE



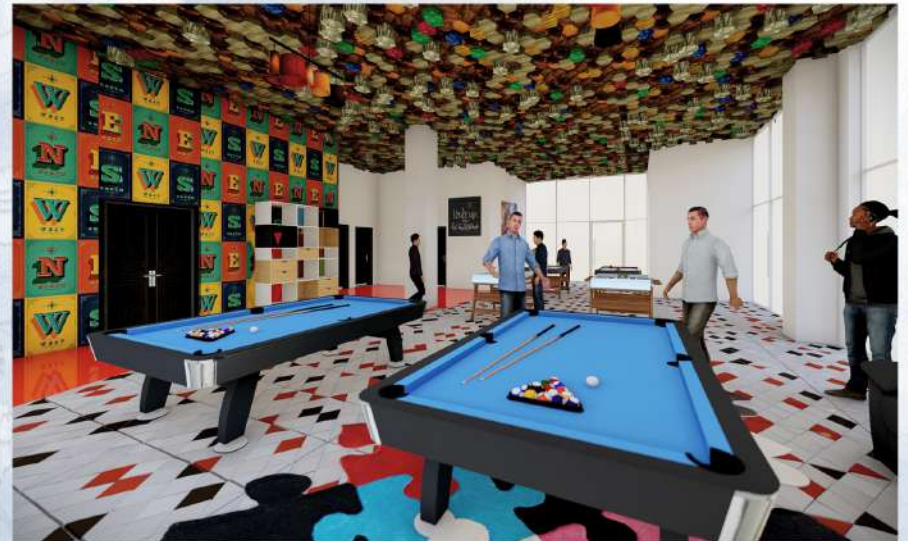
MEETING ROOM



PRAYER AREA



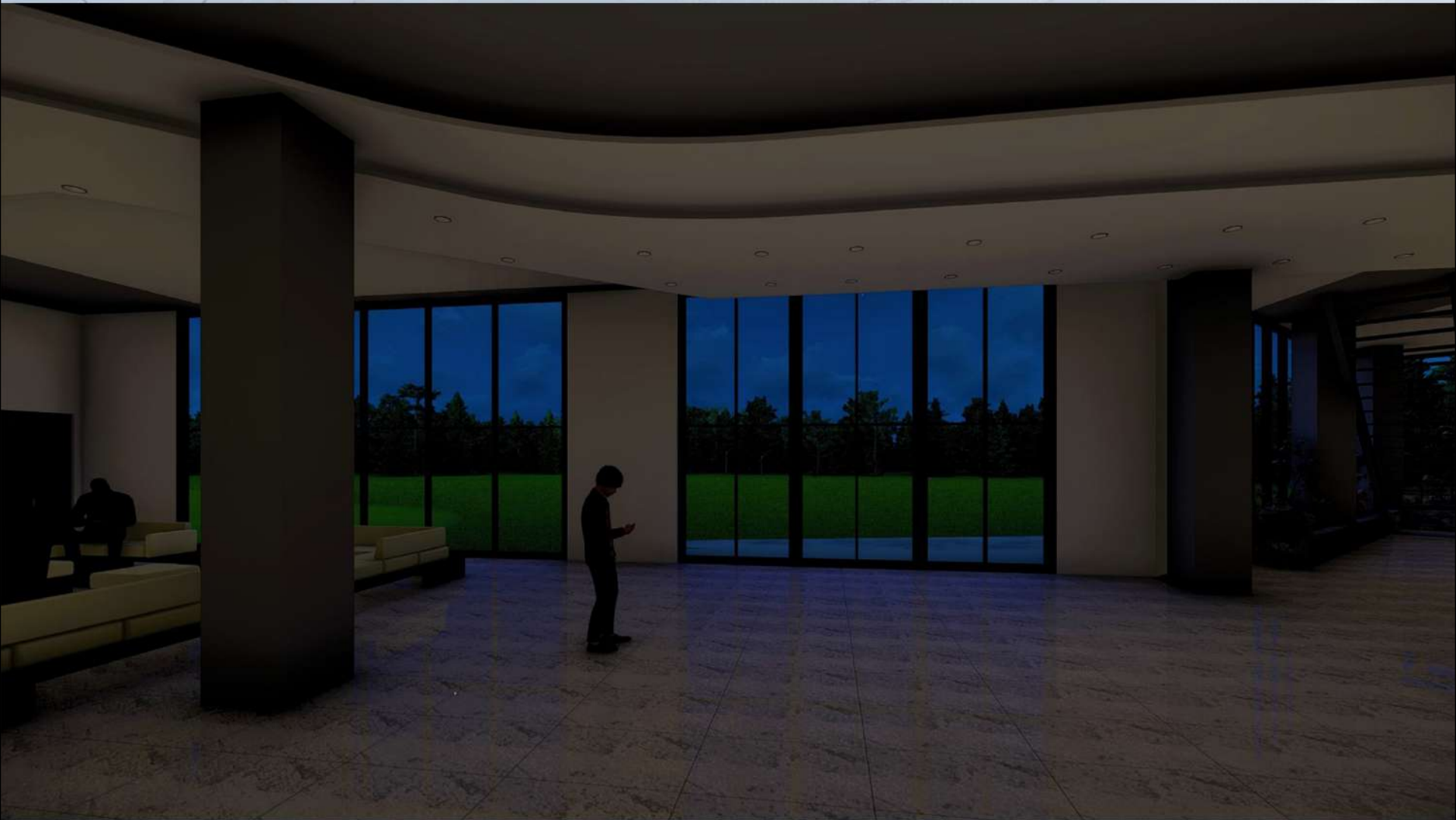
GAMING AREA



PENT HOUSE



OFF TIME



Thank
you!