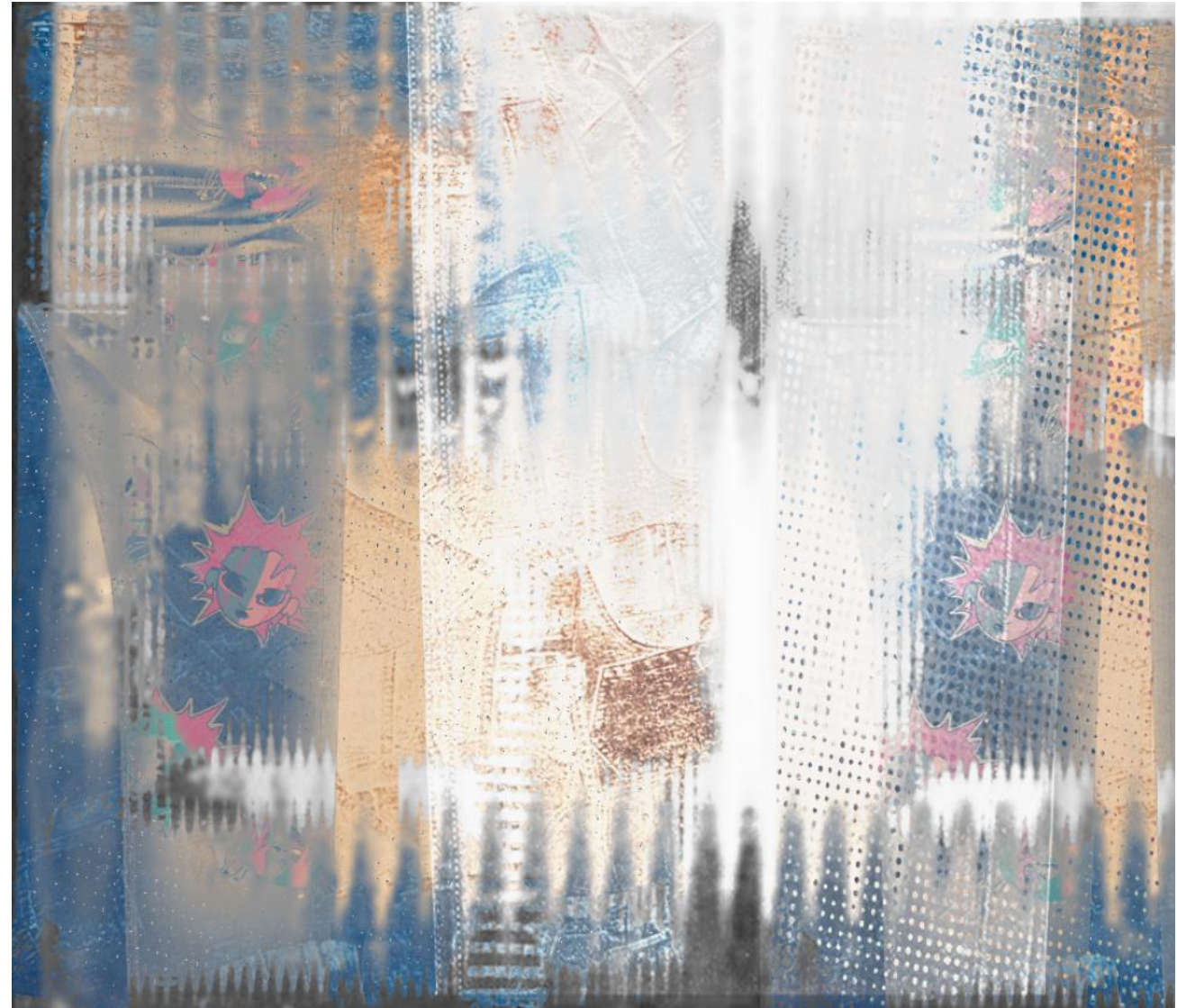


The fabrics I created based on the texture of denim do not consume a lot of water resources, which will not put great pressure on the sustainability of water resources. They will not produce a large amount of harmful chemicals, so they will not bring more burden to the workers on the assembly line. The final product only requires digital printing because I control all costs at the creation stage.



In this work, I used cyanotype as the basic texture and visual element of the fabric. This technique gives the picture a unique sense of layering and depth. Then, I incorporated the elements of chain and monsterization into the design to increase the sense of visual conflict. The chain is like a symbol of bondage in the picture, and the monsterization is interspersed on the surface of the fabric, giving people a sense of power and oppression. At the same time, through the light and dark interlacing of the chain and the monster, it has a dynamic and three-dimensional effect on the picture, as if emphasizing a potential tension to break free from bondage.

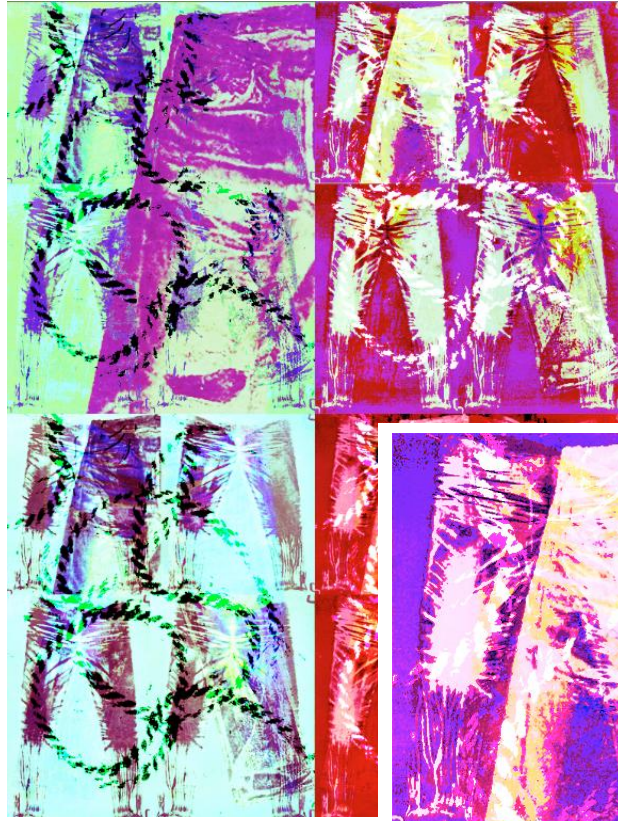
Through this design, I hope to convey a struggle between bondage and freedom. The cyanotype texture and chain pattern on the fabric coexist, symbolizing oppression and predicament. The collision of colors and layers not only shows the complexity of the material, but also reflects the assembly line workers and the severely polluted environment around them. They know they are in it but cannot escape.





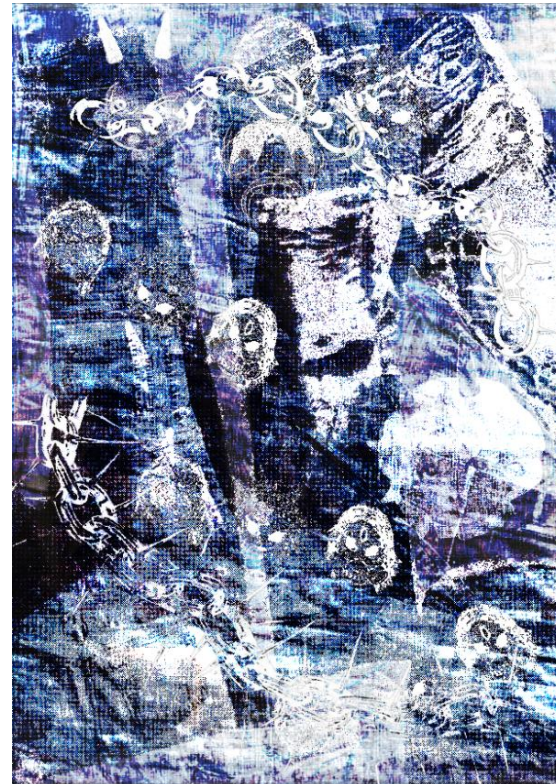
In this work, I used multiple layers of texture superposition and color collision to present a complex and rich visual effect. The bottom layer of the picture is a simulated effect of cyanotype. They are like fragments of memory intertwined, with a bit of retro and heavy emotions. On the top layer of the fabric, orange-yellow geometric blocks are added to form a strong visual contrast. These blocks are like burning flames, injecting a kind of vitality and vitality into the whole picture, breaking the dull atmosphere.

This work attempts to simulate the situation of fabrics in the dye vat, adding a little geometric pattern to the disorder to represent the unbreakable order and standards of the assembly line. The dark tones and textures of the background symbolize the confusion and struggle of the workers on the assembly line, while the orange-yellow blocks represent a breakthrough and awakening of the environment and consciousness.



Through the carefully designed use of textures and colors, this work shows the complex impact of industrial production on the environment and humans, especially the water pollution problem in the production of jeans and its impact on assembly line workers.

Metaphor of water pollution in jeans At the bottom of the work, the simulated effect of cyanotype sets the tone for the whole picture. These effects are like the marks left by industrial wastewater in the natural environment, symbolizing the widespread water pollution problem in the production of jeans. The dyeing and rinsing of denim often requires a lot of water and chemicals. These dyes and chemicals are directly discharged into the river without treatment, causing water pollution and destroying the ecological balance. In the work, these textures are like polluted rivers and destroyed ecosystems, showing the negative impact of industrial production on the natural environment.



In this set of samples, I focused on the industrial and rough feeling, similar to the effect of mass production on the assembly line. The ghost image and the chained elements in the picture suggest the close connection between the clothing assembly line and environmental pollution in the modern industrial society. Secondly, the image of the chain in the picture symbolizes the bondage of this industrial production method on workers and the environment. Workers are often exposed to toxic chemicals for a long time in harsh working conditions, which leads to health damage. The environment is forced to bear the erosion of a large amount of pollutants, and the ecological balance is broken. The ghost image in the picture symbolizes the consequences of pollution. These "ghosts" represent the forgotten or neglected victims of the industrialization process: polluted rivers, destroyed forests, and natural landscapes that have been completely changed by pollution.