



# PORTFOLIO

MOSAIC REVIVAL



# THE RESEARCH QUESTION

---

"How can contemporary interior design in Canterbury incorporate traditional Roman Mosaic art to reflect the city's Roman Heritage while creating Modern, functional spaces?"

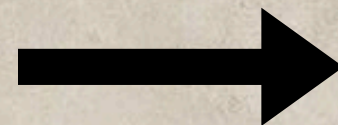


**"Mosaic Revival: Bridging Canterbury's Roman Legacy with Modern Design"**

## THE PROJRCT: MOSAIC REVIVAL-A GALLERY CAFE

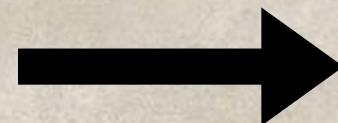
---

### Concept



Transformation of a space into a vibrant, culturally rich space that celebrates rich Roman History of Canterbury through Mosaic Art and bridge the Canterbury's Roman Legacy with modern design

### Inspiration



The combination of little pieces of tiles/stones/pebbles to create an extra ordinary Mosaic Art.

Since this Gallery cafe is for all the cultures and this space brings all the people from various cultures, nationalities and religions and celebrates the global diversity within the space, it is similar to how a beautiful extra-ordinary art being generated in a Mosaic Art, through the combination of small pieces.

### Design objectives

- Historical reflection with modern elegance
- Using Mosaic art as a central design element.
- Sustainability and preservation
- Subtle use of Roman Architecture
- Fusion of Textures and Materials
- Create an open, flowing layout that incorporates the movement and space organization of ancient Roman architecture (such as axial symmetry or central courtyards) while remaining adaptable to modern living.
- Integration of Modern Technology (Smart lighting, temperature control, sound systems, etc.) with classic design.



# STORY AND DETAILS OF ENTRANCE FACADE MOSAIC



## "THE ROMAN-BRITISH CONVERSATION"

The symbolism and reason behind using the elements in the design:

The parrot:

- Their bright colours made them symbolic of exotic beauty and art, much like mosaic with intricate & colourful tiles.
- Parrots were sometimes associated with bacchus 'God of wine and festivity' Therefore it is fitting for the lively cafe of the gallery.
- Symbolizes paradise/pleasure

The Robbin:

- Symbolizes the UK culture as it is the national bird of UK

Canterbury bluebells:

- It is symbolizing the culture and heritage of Canterbury city as it is a specific flower to Canterbury city.

Roses: Depicts the 'Love' which is mentioned in Canterbury tales.

Tulip: Rebirth & renewal/Modern revival

Fig. 20: The Mosaic design for the Entrance facade- "THE ROMAN-BRITISH CONVERSATION"-Designed and hand made the mosaic by Author



# THE PROCESS OF MAKING THE PROTOTYPE



Fig 21: Sketched Design

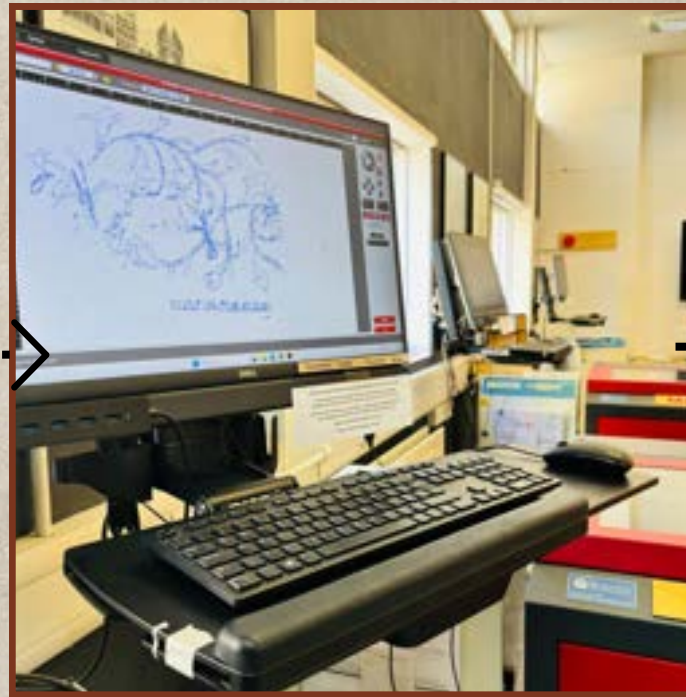


Fig22: Generated the line drawing through illustrator and sent it to lazer cutting workshop



Fig23: Engraved the design onto a MDF board through lazer cutting machine



Fig24: Started pasting the materials



Fig 25



Fig 26



# THE PROCESS OF MAKING THE PROTOTYPE



Fig 27: Cutting tiles in to various sizes



Fig 28: Tried mixed media on the mosaic (Glass and ceramic tiles, pebbles, beads, etc.)



Fig 29: In the process of pasting materials to the mosaic



Fig 30



Fig 31



# THE PROCESS OF MAKING THE PROTOTYPE



Fig 32



Fig 33: Completed pasting all the pieces required for the design



Fig 34: Making the grout into a thick paste

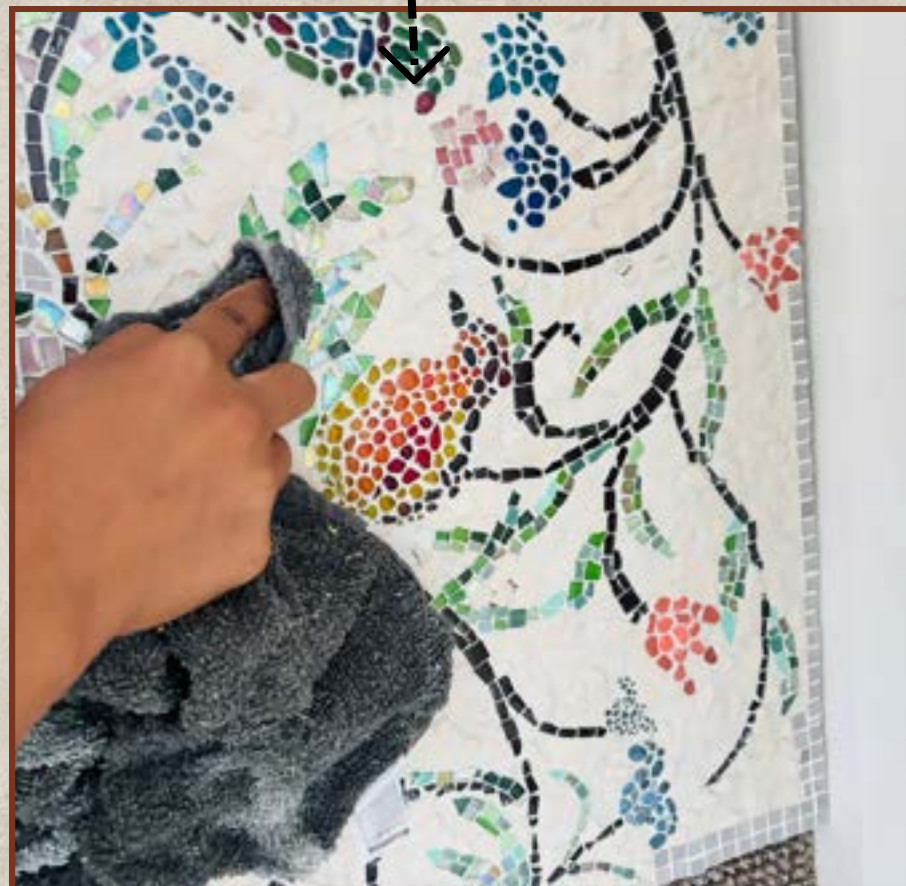


Fig 35: Wiping off the excess grout

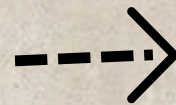


Fig 36: Final completed Mosaic



# REFLECTION ON MOSAIC PROTOTYPE

Creating this mosaic piece was an enriching journey that helped me develop a range of skills valuable to my growth as an interior designer. Throughout the process, I engaged with both traditional handcraft methods and advanced technological facilities provided by the university.

## Skills Gained

### Design Development & Translation

- Learned how to convert a hand-drawn concept into a digital vector image using Adobe Illustrator with guidance from the 3D workshop technician Paul Johnson.
- Understood the workflow of moving from sketches to digital formats suitable for production.

### Material Exploration & Craftsmanship

- Hands-on practice in mosaic tiling, enhancing patience, precision, and understanding of color harmony, composition, and tactile qualities of materials.
- Developed appreciation for surface finishes and textural details, which are essential in creating interior atmospheres.

### Technical Workshop Skills

- Used laser cutting facilities to prepare and refine elements, bridging the gap between manual craft and digital fabrication.
- Gained confidence in handling workshop tools and combining them with handcraft techniques.

### Problem-Solving & Adaptability

- Tackled challenges of scale, fitting tesserae (mosaic pieces) into organic forms, and maintaining balance between design intent and practical execution.



Fig 37: Material Exploration



Fig 38: Laser cutting the design



Fig 39: fitting tesserae (mosaic pieces)

## Reflection on Handcraft vs Technology

In a world where design is increasingly driven by digital technology and machine precision, I wanted to emphasize the value of handcraft through this mosaic. The imperfections and tactile richness of handmade processes bring warmth, uniqueness, and cultural depth that cannot be replicated by mass-produced methods. While I embraced modern facilities like laser cutting and digital vectorization to support my process, the final piece is a testament to the irreplaceable role of human touch in design.

By combining traditional craft with contemporary techniques, I have not only expanded my skillset but also reaffirmed my belief that the future of interior design lies in balancing innovation with the preservation of artisanal practices.



Fig 40



# THE WORKSHOP SPACE MATERIAL BOARD



Created by Author using Morpholio Board application

The story inspired: The Wife of Bath's tale

Theme: Transformation, voice and creativity

## Reasons for Material Use

### 01. Copper/Brass Pendant Light

- Copper has warmth, durability, and glow, representing experience and wisdom (just like the Wife of Bath's character).
- The metallic shine also hints at sensuality and attraction, echoing her confidence and her multiple marriages.

### 02. Dark Wood (Flooring/Panel)

- Symbolizes earthiness, stability, and tradition – grounding the space, much like the Wife of Bath grounds her arguments in lived experience.
- Wood also carries a sense of warmth and comfort, resonating with the domestic and relational themes of the tale.

### 03. Woven/Rattan Texture

- Represents craft, handwork, and the female labor tradition.
- Echoes medieval domestic interiors while connecting to the Wife's insistence on women's value and authority in household and social spheres.

### 04. Decorative Patterned Tile (Geometric/Colorful Mosaic)

- Symbolizes diversity, storytelling, and vibrancy of life.
- Each piece contributes to the whole, reflecting the way different experiences (five husbands, many stories) shape the Wife's identity.

### 05. Pink Tiles

- Represent femininity, sensuality, and romance.
- Pink also ties into the themes of love and marriage in the tale, as well as the Wife's unapologetic expression of female desire.

### 06. Green Tiles

- Associated with fertility, growth, and renewal – echoing the Wife's celebration of life and love.

### 07. Gold Accents

- Represents luxury, power, and sovereignty – a direct link to the tale's central theme: the question of "what women most desire" (authority over their own lives).
- Adds richness and value, symbolizing both material wealth and the richness of experience.

### 08. Delicate Patterned Tile with Floral Motifs

- Suggests romance, femininity, and refinement.
- Links to the chivalric and courtly love context of the tale, where questions of gender roles and respect are negotiated.















# GALLERY SPACE MATERIAL BOARD



The story inspired: The Knight's tale

Theme: Grandeur, timeless love, ideals

## Reasons for Material Use

### 1. Burgundy Red

- Symbolizes nobility, passion, and power, reflecting the chivalric and courtly themes of the tale.
- Burgundy also embodies the romantic rivalry between Palamon and Arcite, echoing love, honor, and sacrifice.

### 2. Black & White Mosaic Flooring

- Represents order, structure, and duality, resonating with the Knight's role in upholding justice and balance.
- The contrast of black and white reflects the tale's themes of fate versus free will and the balance of love and conflict.

### 3. Brass Material

- Associated with strength, durability, and tradition, tying back to the Knight's armor and the martial imagery throughout the story.
- Brass also has a warm, historic quality, creating a sense of medieval authenticity in the space.

### 4. Gold Accents

- Symbolize glory, triumph, and divine favor, key aspects of the tale's tournament and the Knight's sense of honor.
- They also elevate the gallery atmosphere, reflecting splendor and magnificence, qualities celebrated in chivalric romance.

### 5. Flower-Shaped Pendant Lights

- Evoke romance, beauty, and the natural world, which are central to the tale's love story.
- Their form recalls medieval courtly symbolism of flowers as tokens of desire, fertility, and noble love.

### 6. Wooden Floor

- Grounds the gallery in warmth, tradition, and timelessness, reflecting the medieval setting of the tale.
- Wood, being natural and enduring, mirrors the Knight's virtues of honor, loyalty, and stability.























# MILLER'S CAFE MATERIAL BOARD



Created by Author using Morpholio Board application

The story inspired: The Miller's tale

Theme: Earthy humor, community chatter, rustic warmth

## Reasons for Material Use

### 1. Exposed Brick & Rustic Textures

- Represents the earthy, rustic setting of the tale.
- The Miller's Tale is bawdy and grounded in everyday village life, so raw, unfinished textures echo that unpolished, natural environment.

### 2. Warm Woods & Leather Finishes

- Suggest stability, tradition, and comfort, much like the Miller's connection to the working class.
- At the same time, wood's warmth reflects the cozy but lustful domestic spaces in which the tale unfolds.

### 3. Golden Accents (Faucet, Pots, Tile Insets)

- Gold symbolizes desire, temptation, and excess, which drive much of the tale's mischief.
- They also add a layer of richness, contrasting with the rustic base – just like the Miller's crude storytelling mixed with cleverness.

### 4. Floral Mosaic Motif

- Represents romance, seduction, and beauty, central to the plot (the love triangle between Nicholas, Alisoun, and Absolon).
- The handcrafted mosaic also hints at the clash between artful cunning and raw lust.

### 5. Soft Blue Upholstery

- Blue evokes calm and innocence on the surface, a façade similar to Alisoun's outward charm.
- Yet placed in this rustic palette, it becomes ironic, reflecting how appearances are deceiving in the tale.

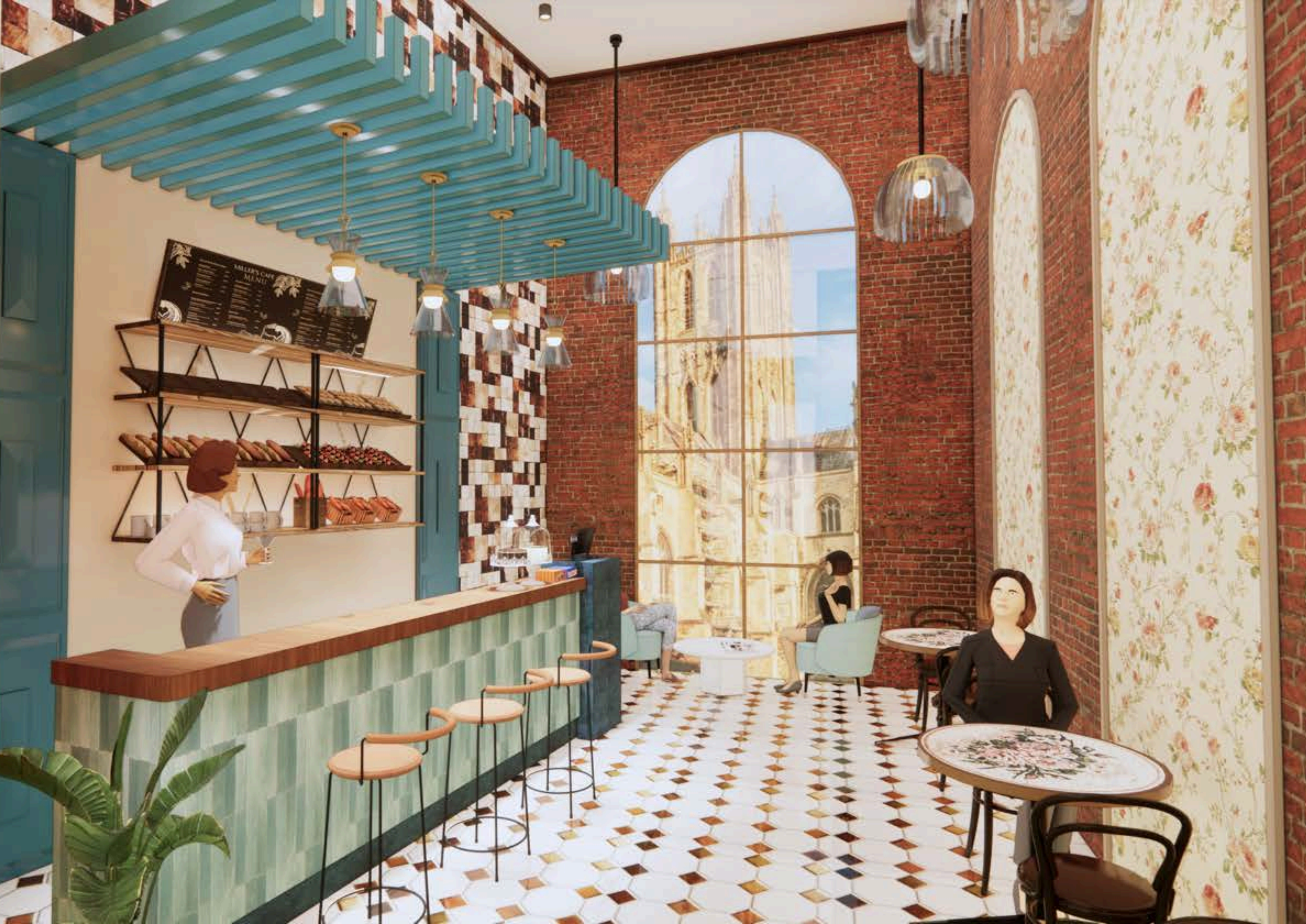
### 6. Patterned Tiles & Decorative Geometry

- These add rhythm and playfulness, echoing the comic and trickster energy of the Miller's narrative.
- The structured repetition of tiles contrasts with the chaotic mischief in the story, creating tension between order and disorder.















# SOUVENIR SHOP MATERIAL BOARD



Created by Author using Morpholio Board application

The story inspired: The Pardoner's Tale

Theme: Morality, temptation and the value of things

## Reasons for Material Use

### 1. Forest Green

- Symbolizes greed, envy, and temptation, the driving forces of the tale.
- Also associated with life and morality, creating irony: the Pardoner preaches virtue but is consumed by avarice.

### 2. Green Mosaic Wall Tiles

- The fragmented nature of mosaics reflects the Pardoner's fractured morality and layered deception.
- Their repeating green tones echo the tale's obsession with wealth and desire.

### 3. Brass Material

- Suggests worldly wealth and materialism, linking to the Pardoner's indulgence-selling trade.
- Its less-precious status compared to gold mirrors his cheapening of sacred values for profit.

### 4. Gold Accessories

- Gold is both alluring and corrupting – in the tale, it is literally the cause of death.
- Symbolizes vanity and spiritual corruption, reinforcing the Pardoner's greed.

### 5. Mosaic-Styled Pendant Lights

- Their fractured glow recalls the distorted truths in the Pardoner's preaching.
- Symbolize beauty hiding corruption, much like his sermons that cloak greed in religious language.

### 6. Concrete Cashier Counter & Oak Wood Floor

- Concrete adds raw solidity, symbolizing the cold, transactional nature of the Pardoner's trade.
- Oak wood balances this with tradition and timelessness, reflecting the moral lesson beneath the tale's corruption.















# REST ROOM MATERIAL BOARD



Created by Author using Morpholio Board application

## Special facts:

- As shown in the above collage, the rest room is created/created by combining little little elements of all the Tales which are being depicted by the other spaces of the design.
- The plants are added into the space and is given a natural colour based colour palette to symbolize the nature which the pilgrims experienced while they were coming from London to Canterbury to see the Canterbury Cathedral in the ancient time which is the incident where these Canterbury tales were originated.

## Reasons for Material Use

### 11. Moss Green & Light Sage Green

- Represent nature, growth, and renewal, recalling the lush English landscapes the pilgrims travel through.
- Symbolize spiritual reflection and humility, aligning with the inward journey of faith.

### 2. Brass Material & Gold Accessories

- Brass reflects durability and practicality, suited to the rough realities of travel.
- Gold embodies divine aspiration and the sacred goal of reaching Canterbury Cathedral, adding a touch of spiritual richness.

### 3. Flower-Shaped Wall Mounted Lights

- Symbolize springtime, new beginnings, and guidance, echoing Chaucer's opening lines where April inspires pilgrimage.
- Their form reflects companionship and hope, much like the light of fellowship among pilgrims.

### 4. Black & White Mosaic Floor Tiles

- Represent duality and contrast – sin and virtue, struggle and reward – which mirror the varied stories of the pilgrims.
- Mosaic also symbolizes fragments creating a whole, just as each pilgrim's tale contributes to the journey's collective narrative.

### 5. White Ceramic

- Suggests purity, cleanliness, and simplicity, offering pilgrims symbolic renewal and refreshment.
- Practical and timeless, it echoes the everyday needs met along the journey.

### 6. White Marble

- Associated with sacred architecture and permanence, referencing Canterbury Cathedral as the ultimate destination.
- Adds a sense of dignity and reverence, elevating the restroom into a symbolic space of reflection.







