

BEYOND THE CANVAS

TRANSLATING FRIDA KAHLO'S ART INTO IMMERSIVE SPACES

EXPLORING THE EMOTIONAL AND SPATIAL REALMS OF FRIDA KAHLO'S
WORK INTO EMOTIVE SET ENVIRONMENTS.

STUDIO PRACTICE
2025

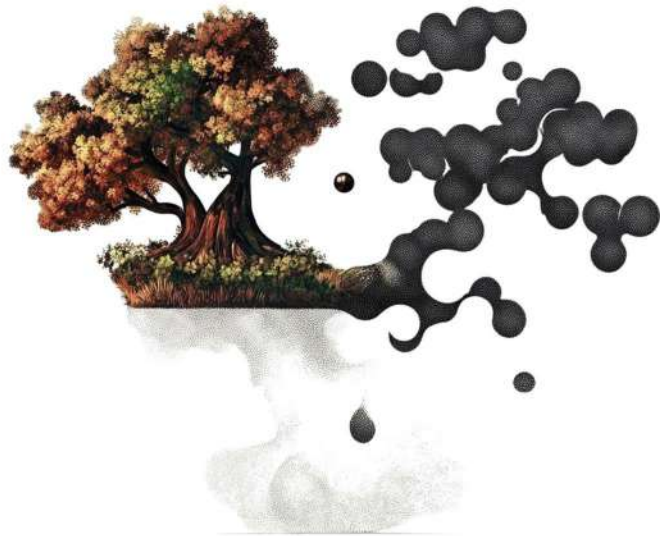
PORTFOLIO
RIMPLE THADANI
2316777



TABLE OF CONTENTS

- 01** **thesis** overview
- 02** **initial** sketches
- 03** **model** exploration
- 04** **site** introduction
- 05** **frida kahlo's** painting
- 06** **high resolution** renders
- 07** **interactive** drawing
- 08** **bibliography**
- 09** **thesis** film
- 10** **professional** networking

THESIS OVERVIEW



Emotive Realms

4

THESIS OVERVIEW

"Beyond the Canvas: Translating Frida Kahlo's Art into Immersive Spaces" is a master's thesis in Architecture Design that explores how set design techniques can transform two dimensional paintings into three dimensional, experiential environments. The project reimagines the emotionally charged and symbolically rich artworks of Frida Kahlo as spatial narratives, allowing viewers to step into her world both physically and emotionally. By selecting four significant paintings that reflect key phases of Kahlo's life including themes of identity, pain, duality, and resilience — the thesis investigates how space can act as a medium for storytelling and emotional connection. Through the dissection of visual elements such as perspective, scale, layering, and symbolism, the thesis translates Kahlo's pictorial language into immersive installations. These spatial interpretations aim to evoke the emotional atmosphere of each painting while maintaining cultural authenticity and biographical depth. Drawing on the methodologies of set design, the research merges the fields of art, architecture, and performance to bridge the gap between visual art and environmental experience. Ultimately, this thesis advocates for a deeper emotional engagement with art, where the boundary between viewer and artwork dissolves in favor of a lived, felt experience.

RIMPLE THADANI

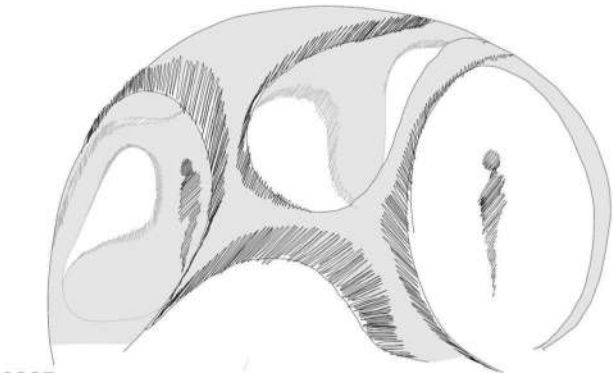
INITIAL SKETCHES

02. INITIAL SKETCHES



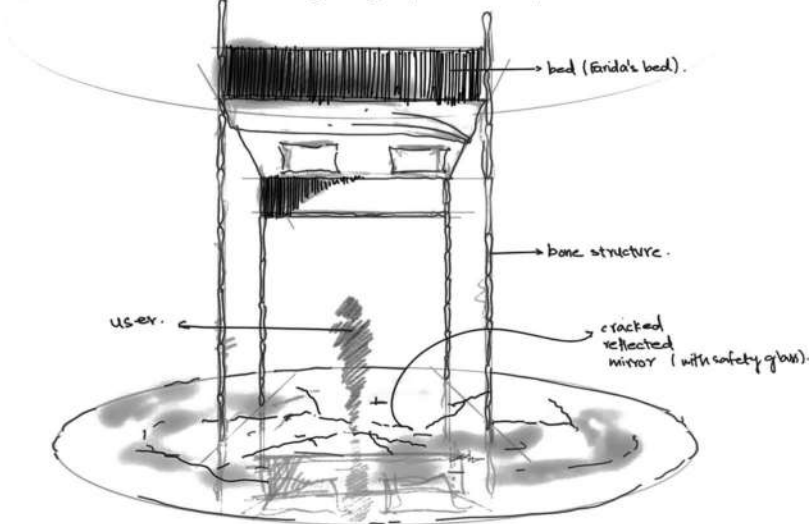
THE TWO FRIDA'S

This conceptual sketch transforms the emotional duality in Frida's painting into an enveloping dome structure with interconnected voids.



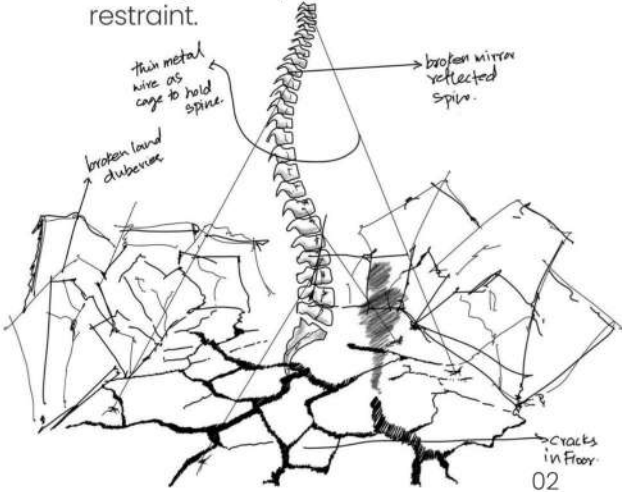
THE DREAM: THE BED

This sketch translates Frida's surreal dreamscape into a vertical, skeletal installation. A canopy bed floats above the user, supported by bone-like structural columns, evoking fragility and the presence of death.

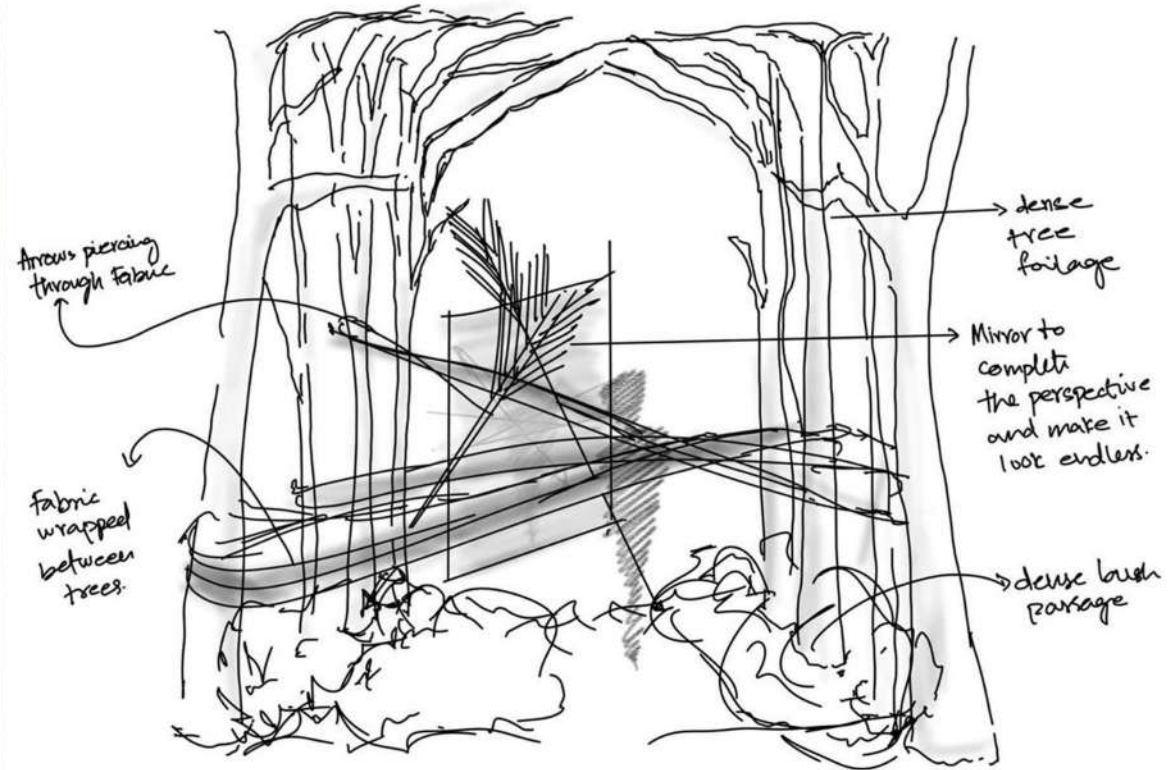
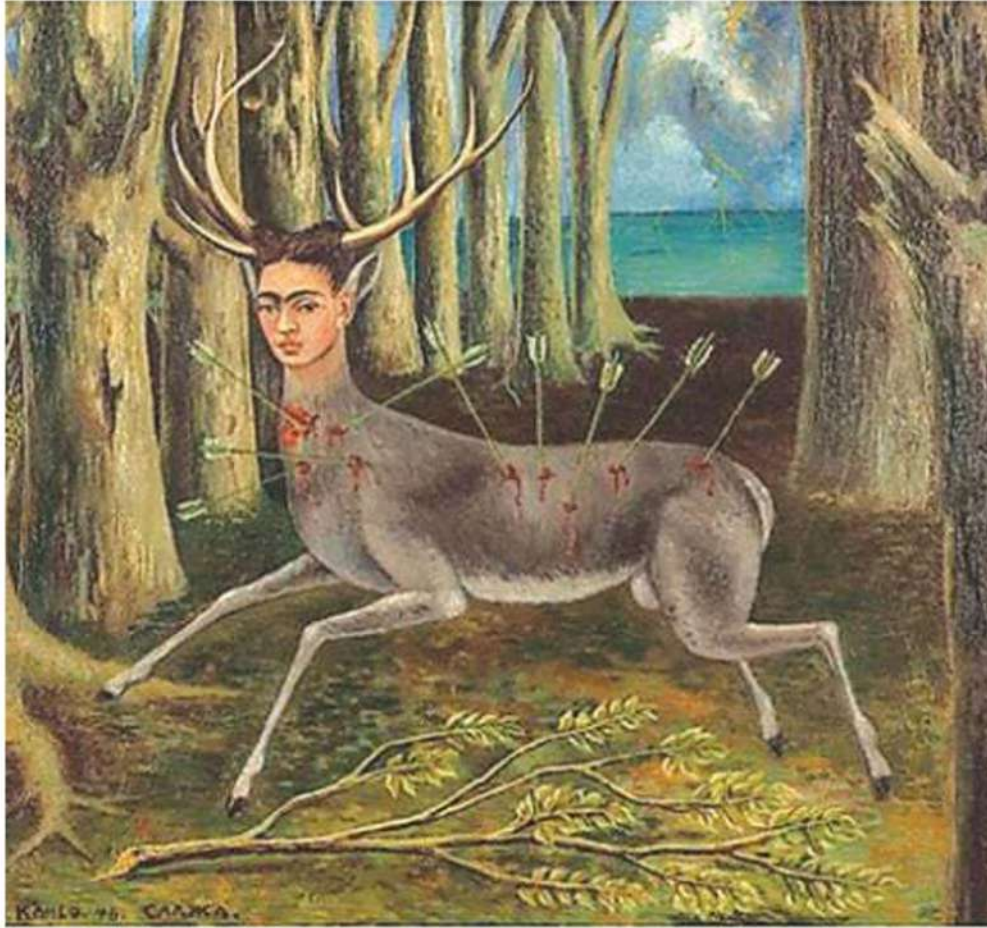


THE BROKEN COLUMN

A metallic spine twists upward, with hyperbolic wires and tension rods echoing bodily pain and medical restraint.



02. INITIAL SKETCHES



THE WOUNDED DEER

The sketch portrays a dense wooded setting, enclosed with tall vertical tree trunks and heavy foliage, invoking the claustrophobic stillness of the forest. Arrows, representing pain and internal struggle are physically embedded into stretched fabric planes that pierce the space. These fabrics act as both spatial dividers and metaphoric wounds, wrapping between trees to express entrapment and tension. At the heart of the composition is a mirrored surface, placed strategically to reflect the forest and fabric intersections. This use of reflection creates an illusory depth, evoking the feeling of being trapped in an endless loop of pain and memory—a powerful echo of the cyclical nature of Kahlo's emotional trauma.

The dense bushy undergrowth completes the immersive terrain, forming a narrow passage for movement, almost as if the viewer must physically confront discomfort to move forward. It's a space of stillness, confrontation, and surreal reflection, where the emotional wounds of the deer are refracted onto the visitor.

MODEL EXPLORATION

03. MODEL EXPLORATION | MAQUETTE



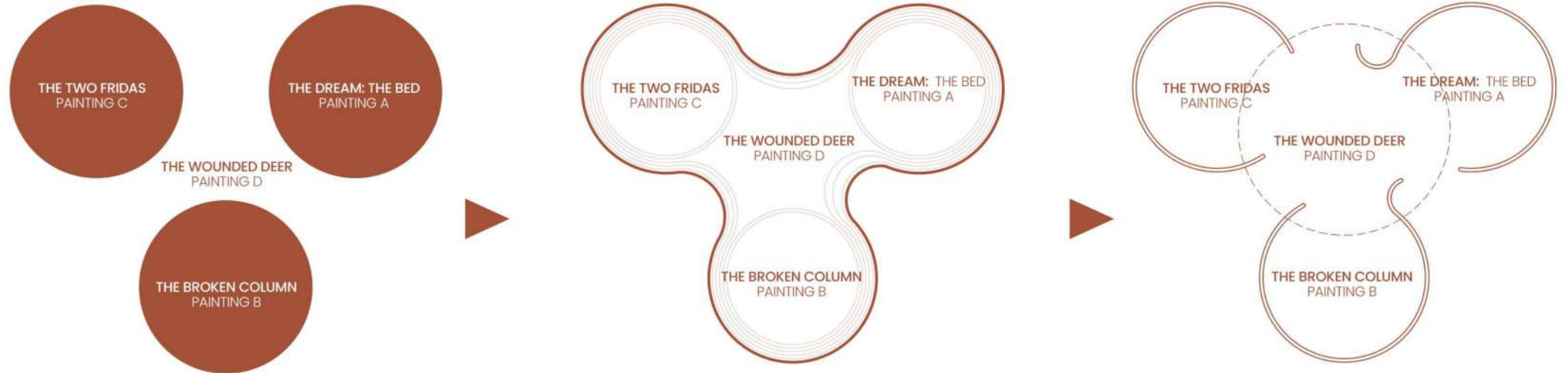
This dome exploration translates the emotional and physical dualities in Frida Kahlo's *The Two Fridas* and *The Broken Column* into form. Using styrofoam spheres, elastic cords, wires, and basic cutters, the process begins with raw material manipulation—binding, piercing, and compressing shapes to reflect themes of fragmentation, pain, and entrapment. The red wiring and mesh-like nets evoke stitched wounds and internal tensions, much like the physical and emotional scarring present in Kahlo's works.



As the forms evolve, inspiration from *The Wounded Deer* and *The Dream* introduces softer enclosures and organic clustering. Woven textures, jute wrapping, and translucent surfaces create a sense of fragility and protection, echoing nature, memory, and healing. Everyday materials and tools—pliers, thread, and dome frameworks—transform into expressive devices, giving structure to the unseen wounds Kahlo so vividly portrayed.

03.1 CONCEPT FORMATION

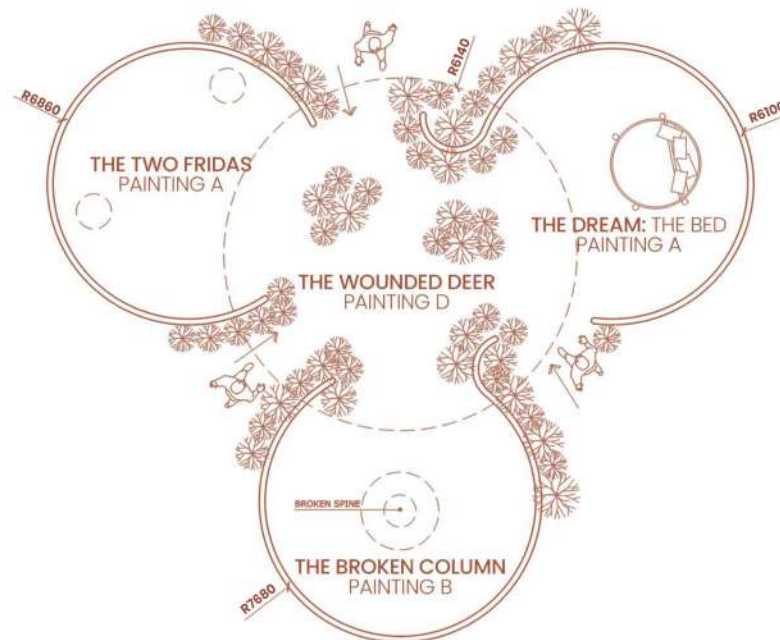
The concept formation draws upon the emotional and symbolic interplay within four of Frida Kahlo's seminal works—*The Two Fridas*, *The Dream: The Bed, The Wounded Deer*, and *The Broken Column*. Each painting represents a facet of her internal world: duality, subconscious tension, physical suffering, and emotional vulnerability. The spatial concept translates these themes into interconnected domes, each echoing the essence of its respective artwork. At the core lies *The Wounded Deer*, acting as the central emotional anchor where all narratives converge. Branching from it, the three surrounding domes embody distinct psychological and physical realms. Their interlinked, organic layout symbolizes the fluidity of trauma, memory, and healing. The forms grow progressively from abstract circles into spatial definitions, integrating nature-inspired flow and symmetry—mirroring the surreal and deeply personal landscapes found in Kahlo's paintings.



THE TWO FRIDAS
PAINTING C



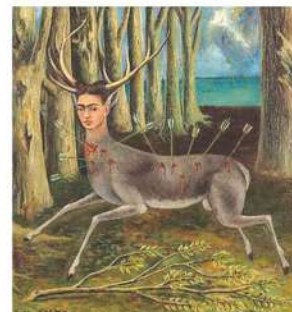
THE BROKEN COLUMN
PAINTING B



THE DREAM: THE BED
PAINTING A



THE WOUNDED DEER
PAINTING D



03.2. MODEL EXPLORATION | DIGITAL

01

base

02

dome

03

framing

04

framing + fabric

05

framing + fabric + connectors

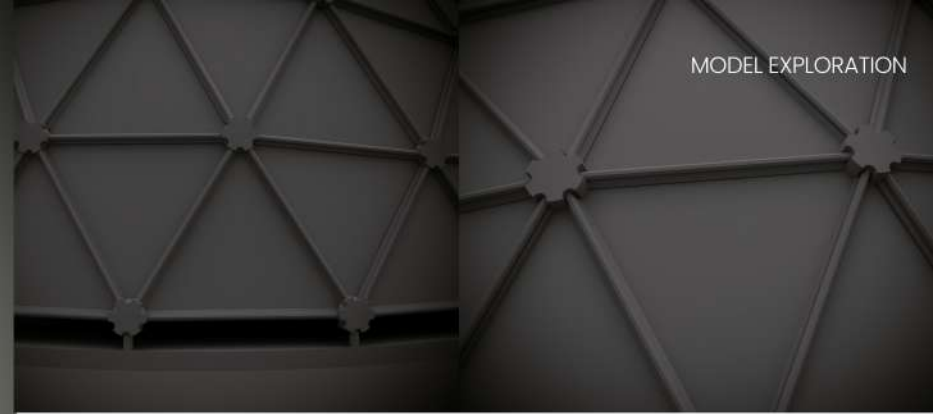
06

the **top view** of all domes. 06

03.2. MODEL EXPLORATION | DIGITAL



the **final model** of a dome.



the **close shot** of connectors placed

The geodesic dome serves as the structural and symbolic foundation of the spatial exploration. Its modularity and repetition embody both order and fragility, mirroring the psychological dualities expressed in Frida Kahlo's paintings. Through digital modeling, the form was tested for variations in scale, connectivity, and enclosure, allowing the domes to become more than just shelters — they transform into vessels of emotion



the broken column



the dream - the bed



the two fridas



the context of the domes



the wounded deer

the **process** of each dome's interior. 07

SITE INTRODUCTION

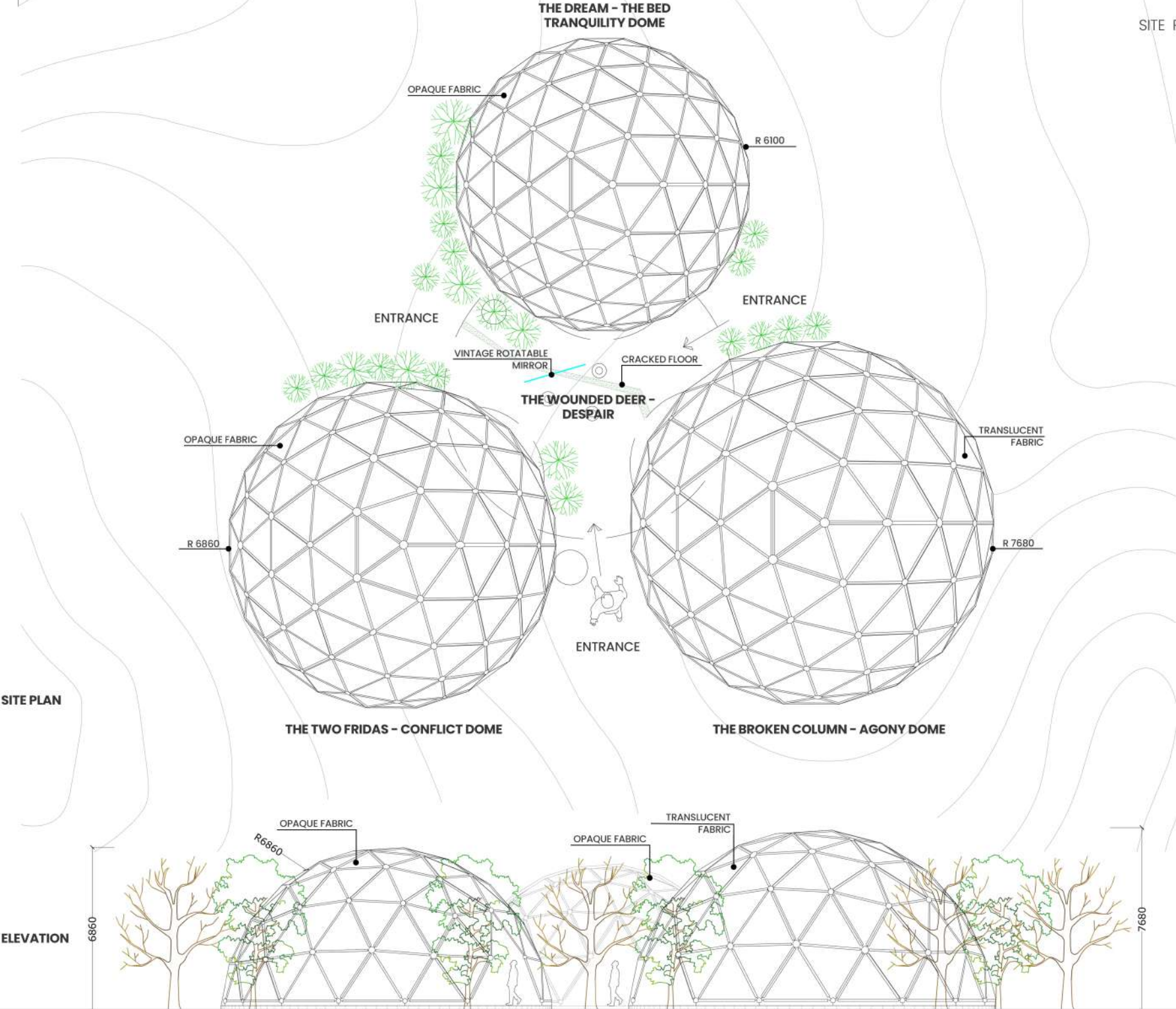
04.1. SITE INTRODUCTION

Tepoztlán, Morelos

- **Why:** Sacred, mystical town often associated with healing and indigenous spirituality.
- **Landscape:** Surrounded by dramatic mountains, jungle flora, and pre-Hispanic energy.
- **Use:** Immersive retreat center for introspective dome installations.
- **Type:** Ideal for terrain-rich emotional journeys.

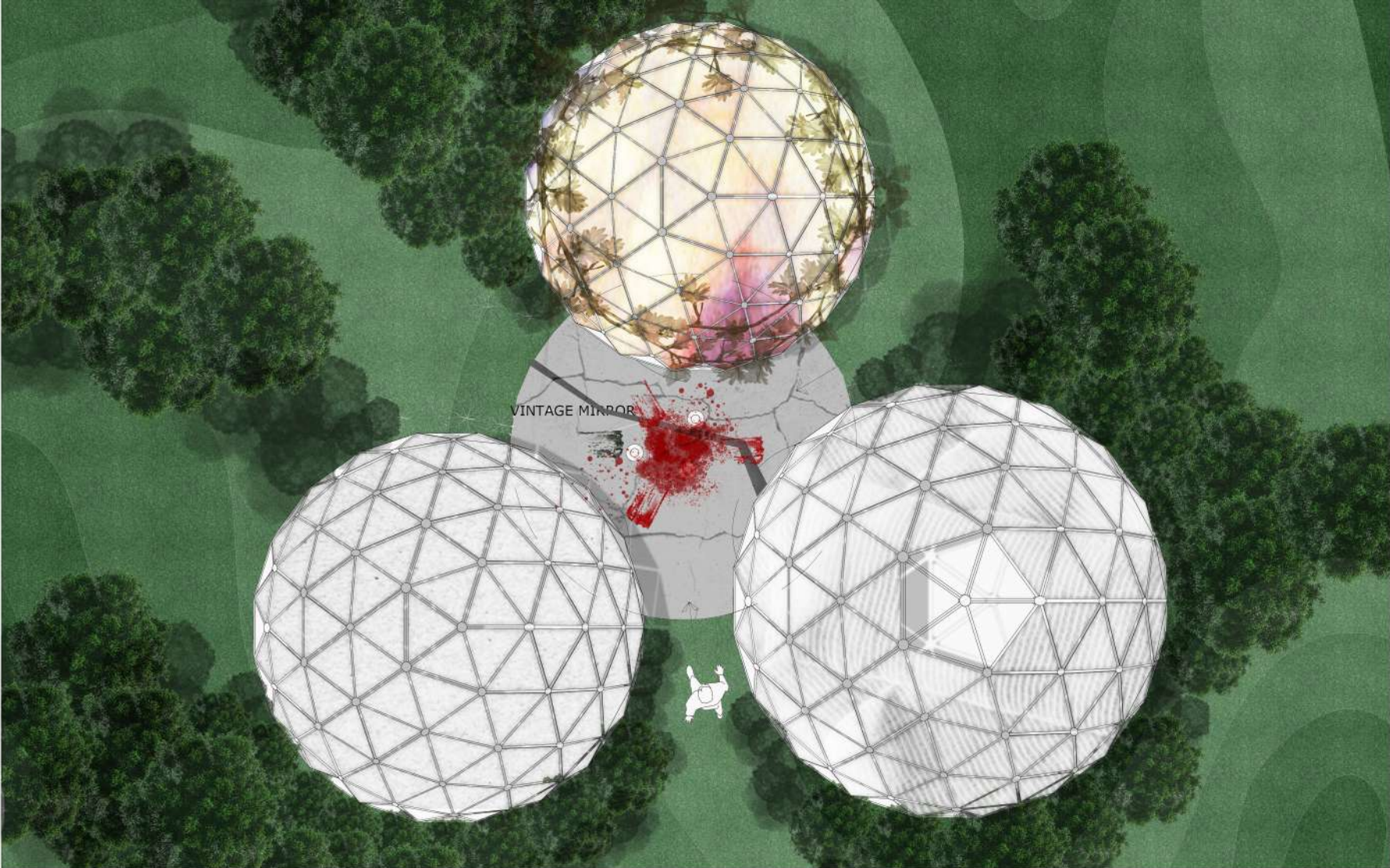


Tepoztlán offers a unique confluence of cultural, spiritual, and ecological layers that resonate strongly with the immersive and symbolic qualities of a Frida Kahlo-inspired project. Its mythic terrain, proximity to Mexico City, and recognition as a Pueblo Mágico make it both accessible and experientially powerful. The rugged volcanic mountains, lush valleys, and sacred topography align with themes of resilience, duality, and surrealism—echoing Kahlo's emotional and artistic world.



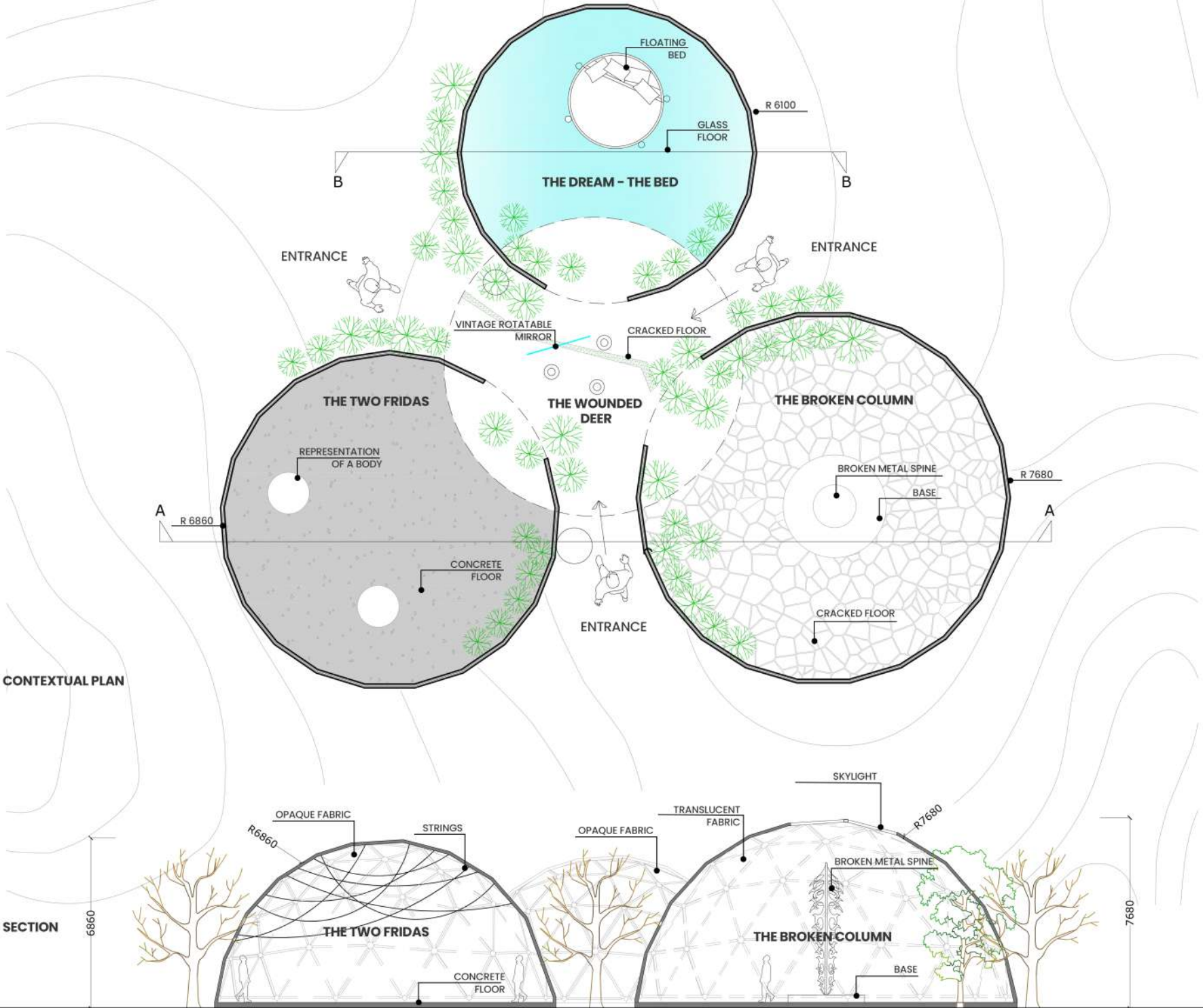
SITE PLAN

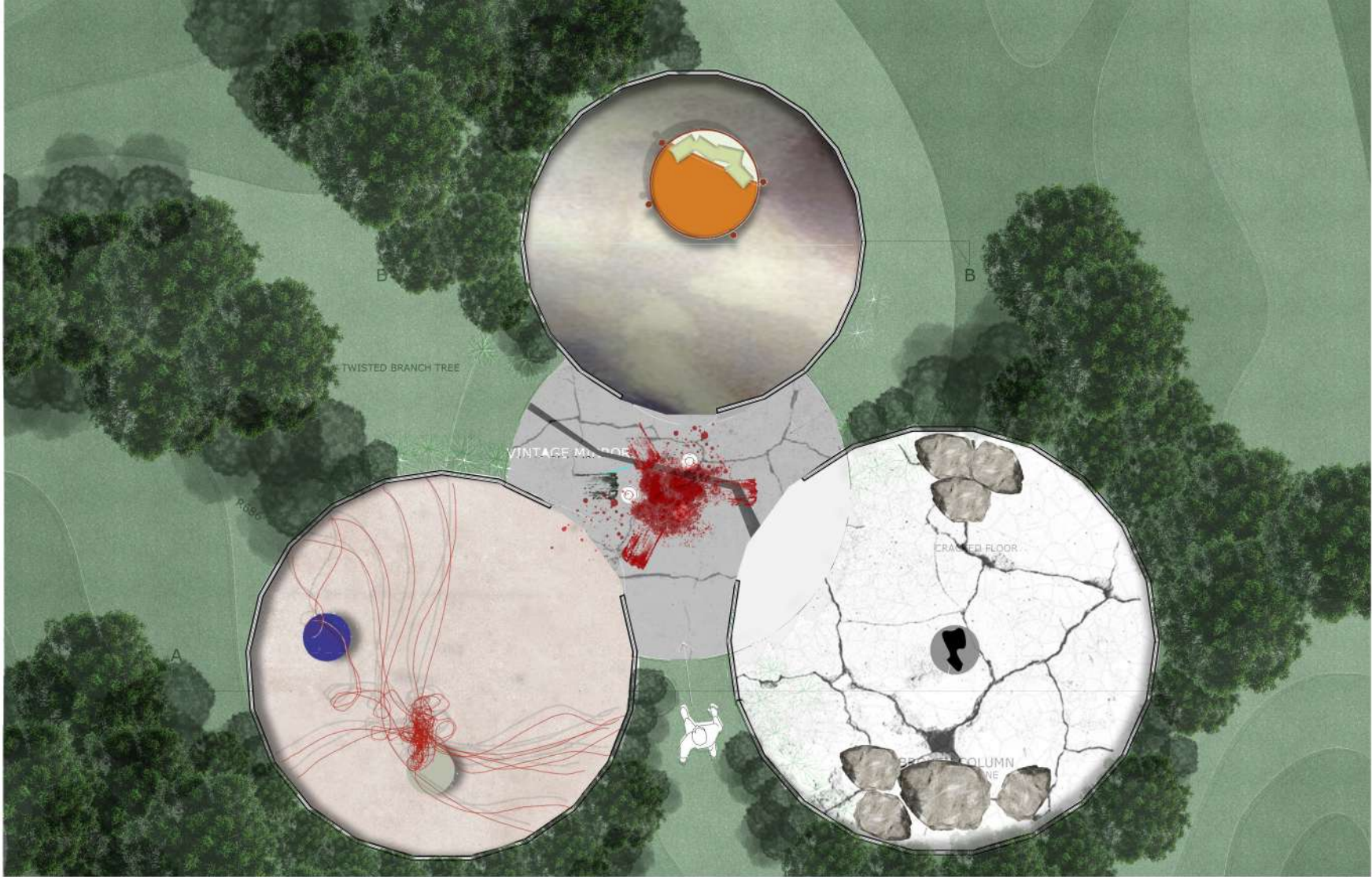
ELEVATION



RENDERED SITE PLAN AND ELEVATION



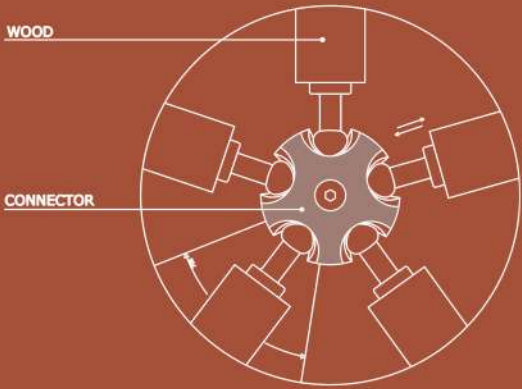




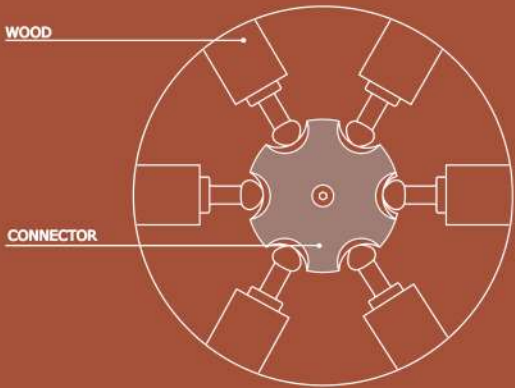
RENDERED CONTEXTUAL PLAN AND SECTION



04.2. DOME DETAILS

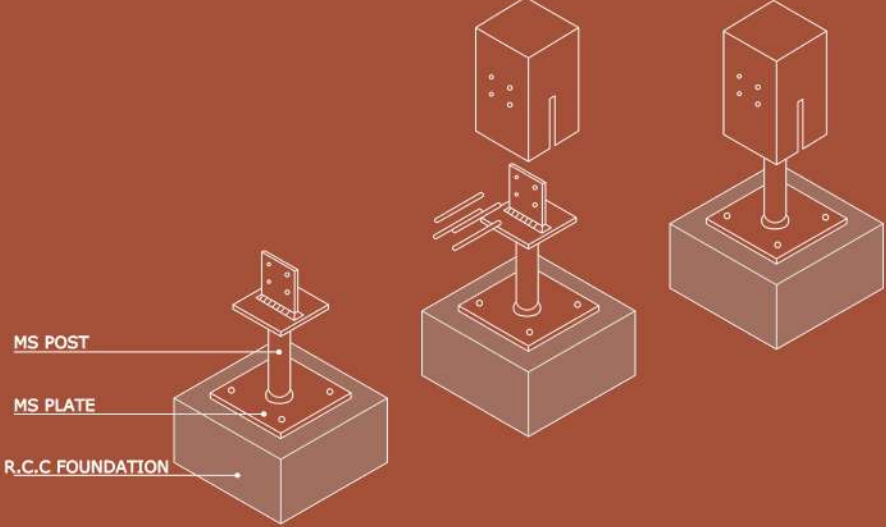


FIVE WAY CONNECTOR



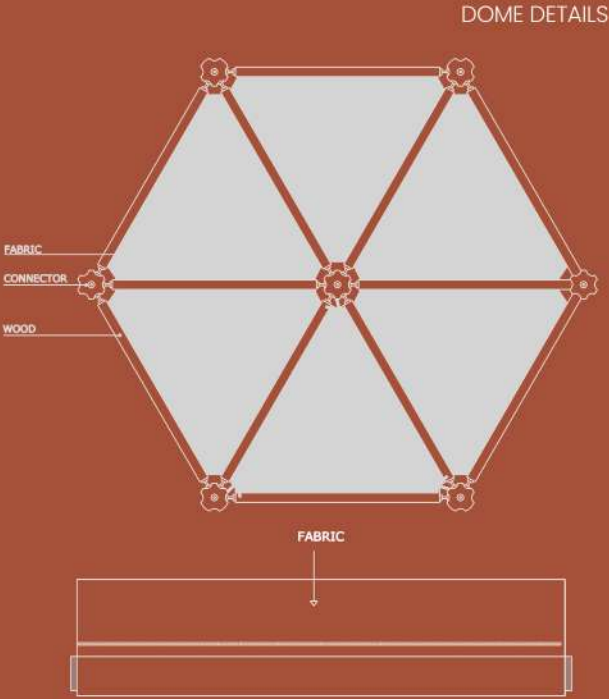
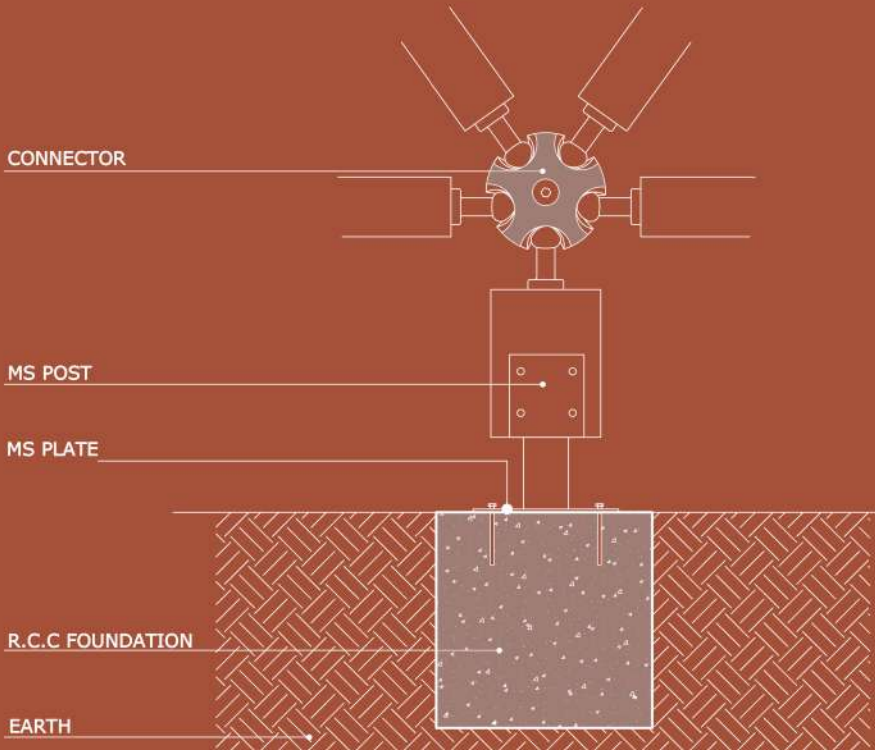
SIX WAY CONNECTOR

The dome employs both five-way and six-way steel connectors, which serve as critical nodes in the structural network. These allow wooden struts to interlock seamlessly, distributing forces evenly across the dome. The modularity of this system ensures scalability and adaptability in different contexts.

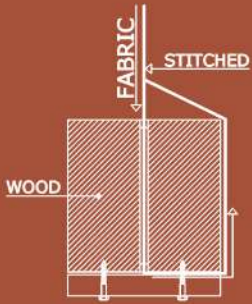


POST DETAIL - CONNECTION WITH GROUND

Vertical steel posts are anchored to reinforced concrete foundations through welded steel plates. This robust base stabilizes the lightweight dome structure, preventing uplift and lateral displacement while allowing for a semi-permanent installation within natural settings.



ELEVATION



FABRIC AND POST CONNECTION DETAIL

The enclosure is achieved through a stitched fabric membrane stretched over the wooden framework. This skin is both protective and symbolic: it filters light, creates an atmospheric interior, and reinforces the immersive quality of each dome. The detail ensures a secure yet flexible attachment, allowing the material to breathe while responding to environmental conditions.



AERIAL VIEW

2025

01. DESIGN INSPIRATIONS

CONFLICT DOME : 'THE TWO FRIDAS'

Expression of duality, and emotional struggle. A mirrored space where visitors exist in two realities. One side reflects her Mexican heritage through warm, vibrant textures, while the other represents her European influences with a colder, more clinical aesthetic, and a corridor connects the two, forcing visitors to transition



05.1 CONFLICT DOME: THE TWO FRIDAS (1939)



A haunting interplay of form and material unfolds. A mirrored figure wrapped in translucent film evokes a sense of entrapment and duality, mirroring Frida Kahlo’s enduring themes of pain, identity, and confinement. Suspended and tangled shapes suggest a visceral unraveling, capturing the chaos within and her fragmented relationship with the body. Entwined in a womb like web, human forms speak to femininity, fertility, and the emotional weight of womanhood. A cocoon of threads compresses bodies into one, symbolizing the entangled psyche, physical constraint, and the quiet ache of co-dependence.

GENERAL SELECTION OF MATERIALS



M A T E R I A L I T Y

- SHEER FABRIC** – Suggests vulnerability, transparency, and the fragility of identity and emotion.
- BRAIDED ROPE** – Symbolizes entanglement, strength, and co-dependence; binds and connects dualities.
- PAPER** – Evokes warmth and intimacy; represents bodily softness or the womb.
- RAW CONCRETE TEXTURE** – Grounds the composition with weight and permanence; contrasts delicacy with stark realism.
- STONE** – Conveys permanence, resistance, and the body as a heavy, enduring vessel.
- STRINGS** – Highlights fragility, connection, and the continuous unraveling or stitching of identity.
- RUBBER STRIPS/BANDS** – Implies tension, elasticity, and pressure—reflecting internal emotional strain.

TYPOGRAPHY

A nomadic environment for the whole scene

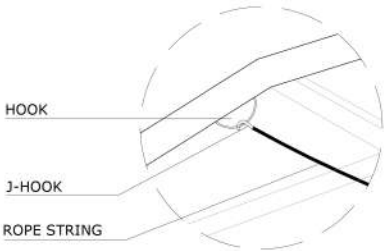
GEODESIC DOME STRUCTURE

A dynamic structure showcasing, 'The Two Fridas' with an opaque fabric.

COLOR PALETTE

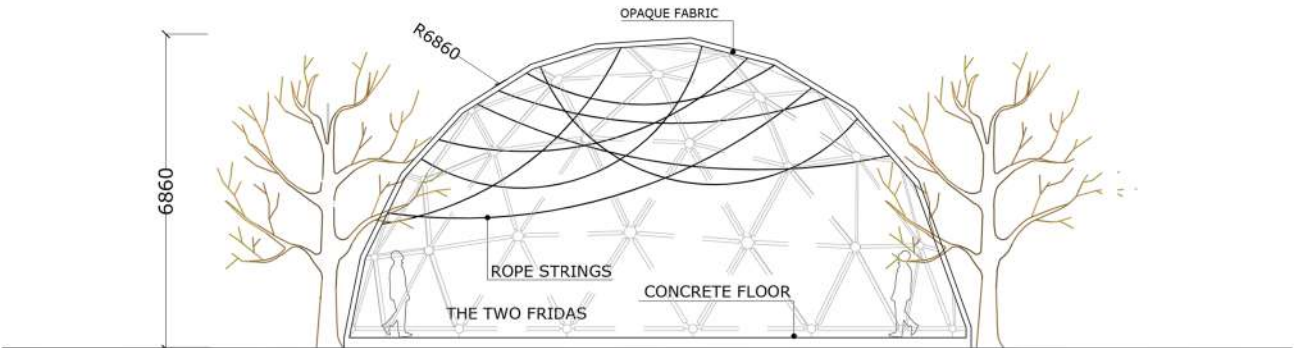


05.1.1. TECHNICAL DRAWINGS

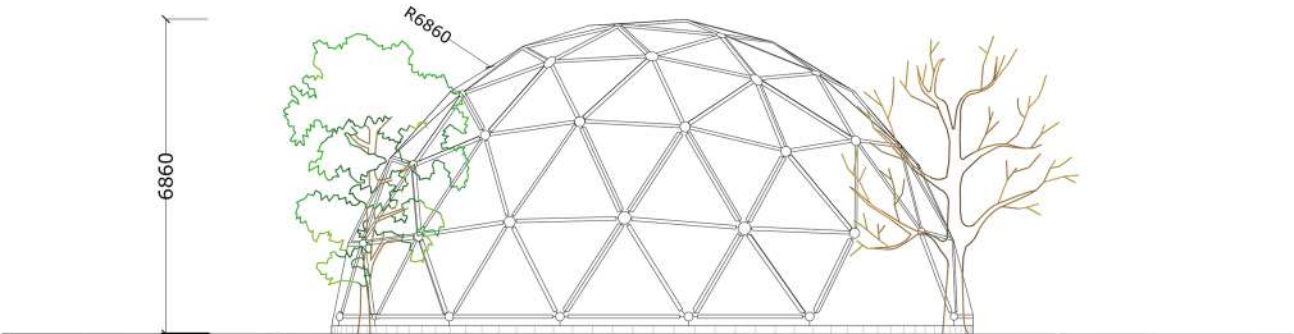


THE TWO FRIDA'S STRING DETAIL

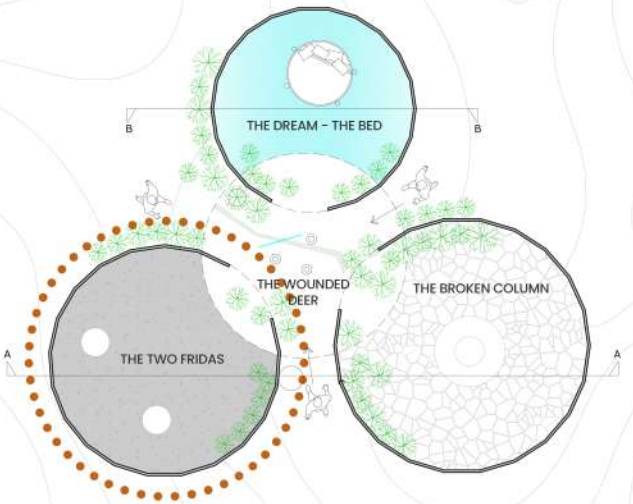
The dome nodes are interconnected with rope strings, fixed through J-hooks welded to the steel frame. The tension members provide secondary stability. The strings act as non-structural tensile ties that supplement the dome's geometry, enhancing both its structural legibility and spatial expression.



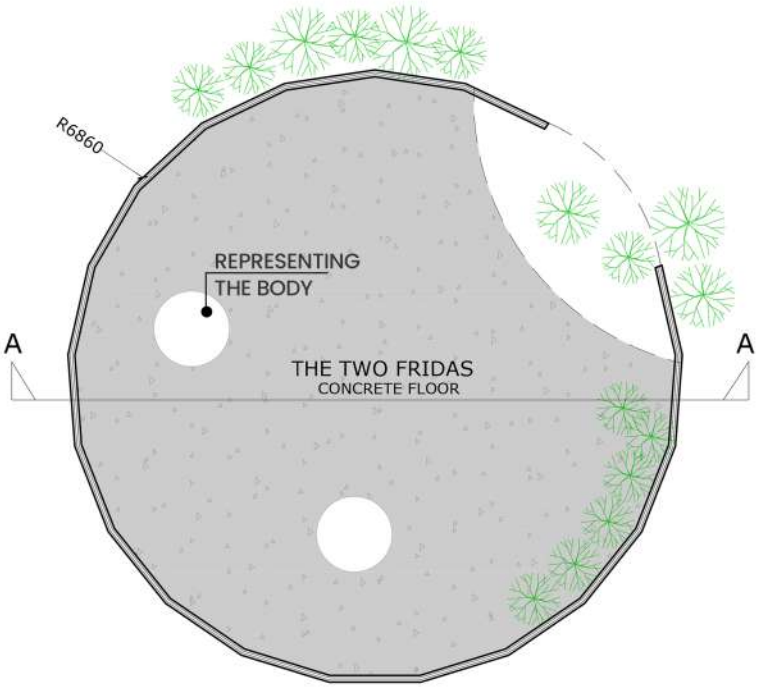
SECTION A-A



ELEVATION



KEY PLAN

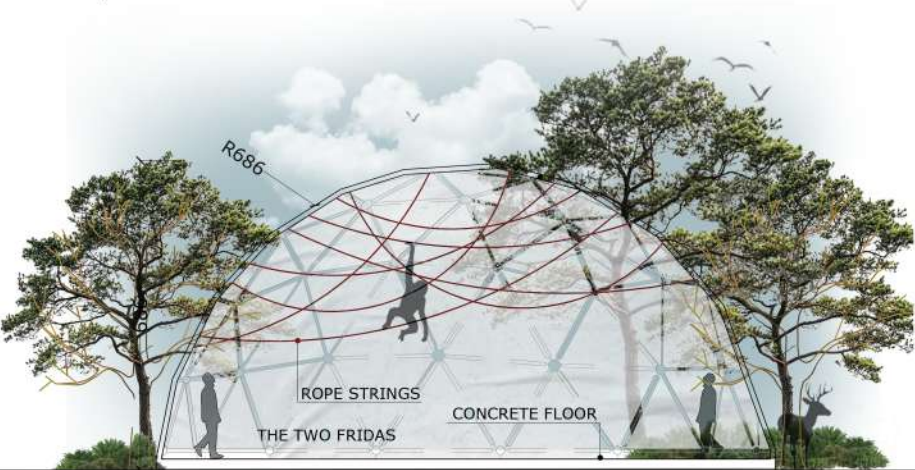


PLAN

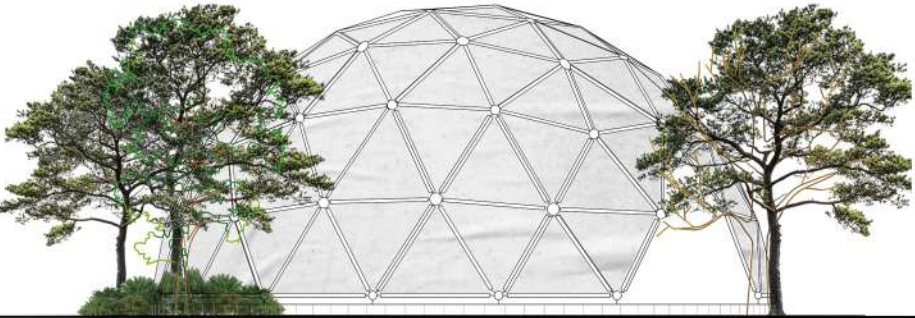
05.1.2. RENDERED DRAWINGS

The projections of **The Two Fridas** envelop the curved dome interior, immersing visitors within the haunting duality of her split self. At the heart of the space, two sculptural figures stand in dialogue, mirroring the painting's iconic characters, their presence amplified by suspended red threads cascading from above—an abstract translation of Frida's exposed veins. These threads weave into a fragile yet intricate web, crisscrossing overhead to symbolize the tension, interconnection, and inescapable bond between her two identities.

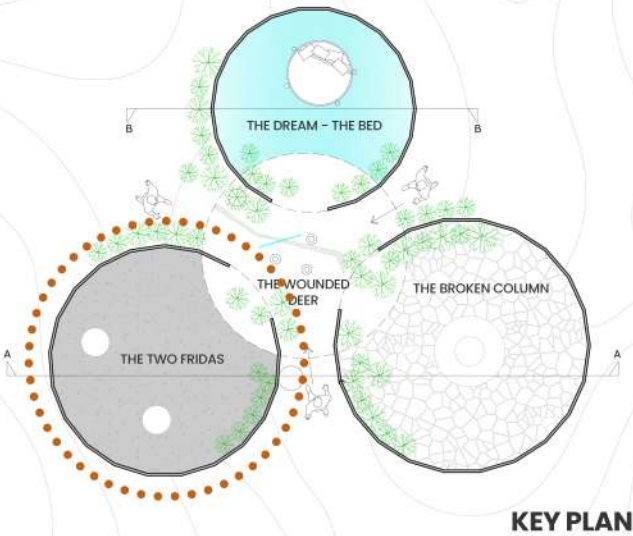
The dome itself becomes a physical manifestation of inner conflict, where vulnerability and strength coexist in a shared atmosphere. As light shifts across the surfaces, the projections and threads animate the space with an unsettling sense of fragility, echoing Frida's emotional wounds and resilience. Complementing the visual narrative, a QR code invites visitors to listen to the subtle, visceral sound of blood coursing through her veins, layering the installation with an auditory experience that heightens intimacy and unease. Together, these elements transform the dome into a living portrait of conflict and connection—an environment where Frida's divided self is not only seen but felt.



SECTION A-A



ELEVATION



KEY PLAN



PLAN



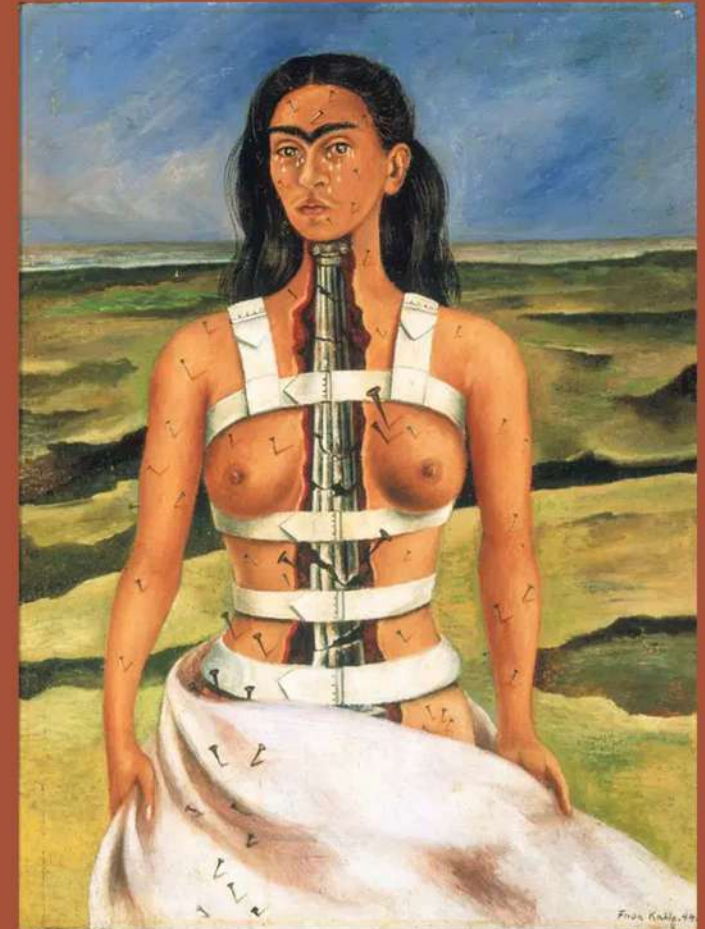
THE TWO FRIDA'S

2025

01. DESIGN INSPIRATIONS

AGONY : 'THE BROKEN COLUMN'

Expression of physical pain, vulnerability, and resilience. An unstable, fragmented environment featuring cracked floors, tilted walls, and a central spine-like column. The structure responds to movement, emitting vibrations when walked upon, evoking the physical instability she experiences.



05.2 THE BROKEN COLUMN (1944)



This installation explores the tension between fragility and strength through sculptural and spatial metaphors. A delicate spine made of suspended binder clips reflects the body's vulnerability, while a sharp metallic version reimagines resilience in a futuristic light. A fractured skylight casts divine light onto a sculpted earthen floor, exposing the rawness beneath. At the center stands a monumental cracked column, glowing from within, symbolizing the strength that pain can illuminate. Suspended fractured monoliths and a thorn armored spine echo Frida's inner struggle—exposed, constrained, yet fiercely enduring. Rising from a cracked foundation, the broken column becomes an architectural body, damaged but still standing.

GENERAL SELECTION OF MATERIALS



CRACKED FLOORING

Sensory design element

GEODESIC DOME STRUCTURE

A dynamic structure showcasing 'The Broken Column' with an translucent fabric.

MATERIALITY

CRACKED CONCRETE – Evokes the fractured spine and emotional rupture central to The Broken Column.

BRUSHED METAL – Symbolizes surgical implants and the cold, invasive aspects of medical intervention.

COILED WIRE – Represents tension, internal pain, and the constrictive nature of physical and emotional trauma.

GLASS BOX – Signify transparency and entrapment, echoing the sterile, clinical framing of her pain.

BROKEN STONE – Mirrors the literal fragmentation of her body, both sculpturally and emotionally.

SKYLIGHT – Captures the core symbolism of her broken spine—pain as both wound and portal.

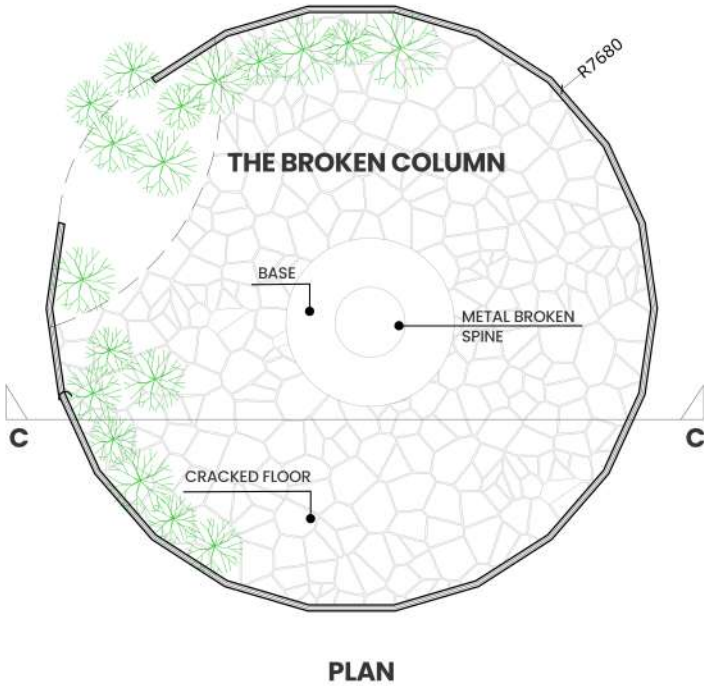
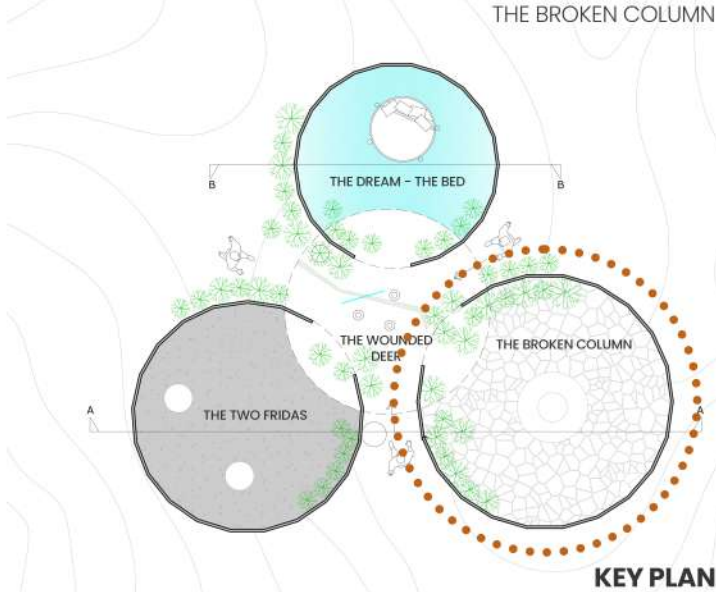
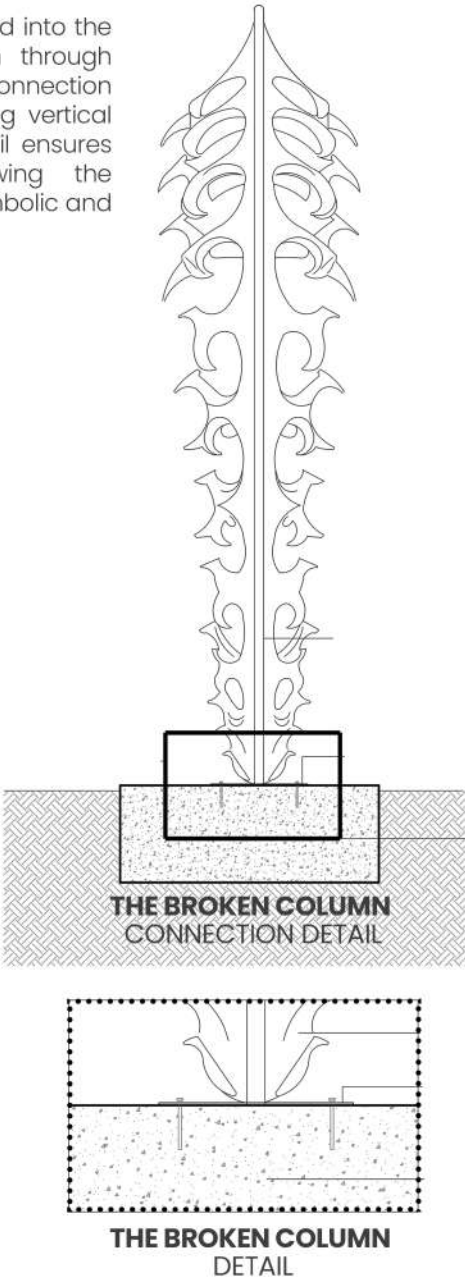
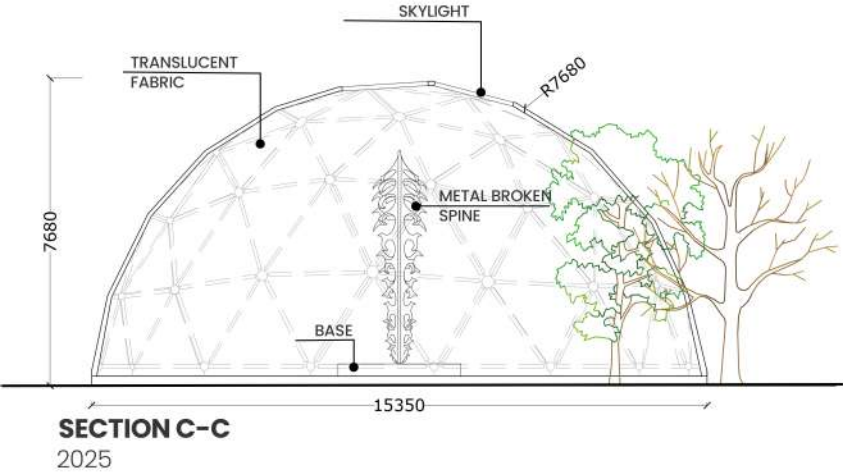
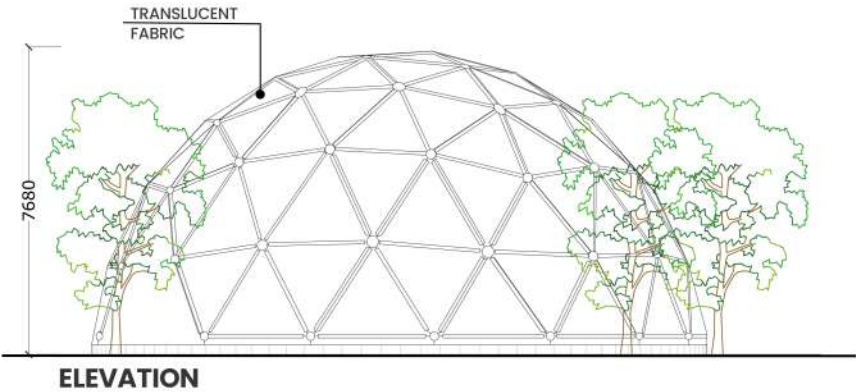
COLOR PALETTE



05.2.1. TECHNICAL DRAWINGS

THE BROKEN COLUMN CONNECTION DETAIL

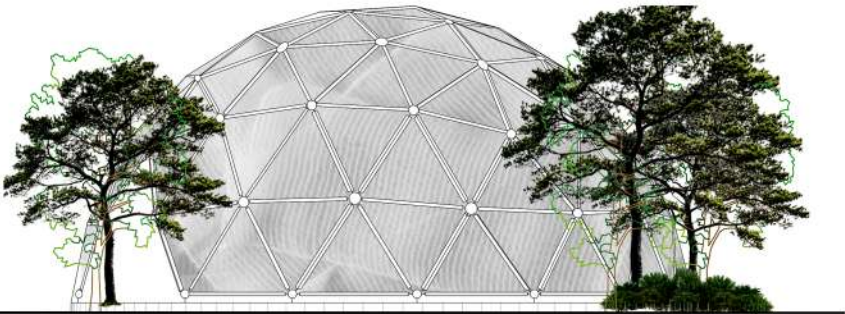
The vertical metal spine is firmly anchored into the reinforced concrete (R.C.C.) foundation through welded mild steel (MS) plates. This base connection locks the element in position, transferring vertical loads directly into the ground. The detail ensures stability against displacement, allowing the sculptural spine to function as both a symbolic and structural support within the dome.



05.2.2. RENDERED DRAWINGS

THE BROKEN COLUMN CONNECTION DETAIL

The vertical metal spine is firmly anchored into the reinforced concrete (R.C.C.) foundation through welded mild steel (MS) plates. This base connection locks the element in position, transferring vertical loads directly into the ground. The detail ensures stability against displacement, allowing the sculptural spine to function as both a symbolic and structural support within the dome.

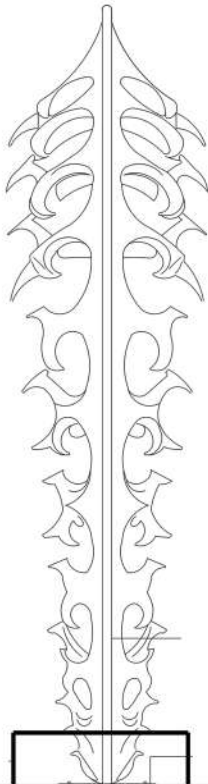


ELEVATION

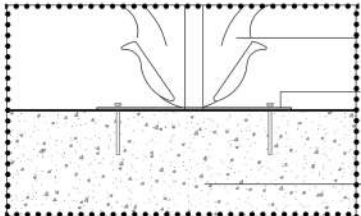


SECTION C-C

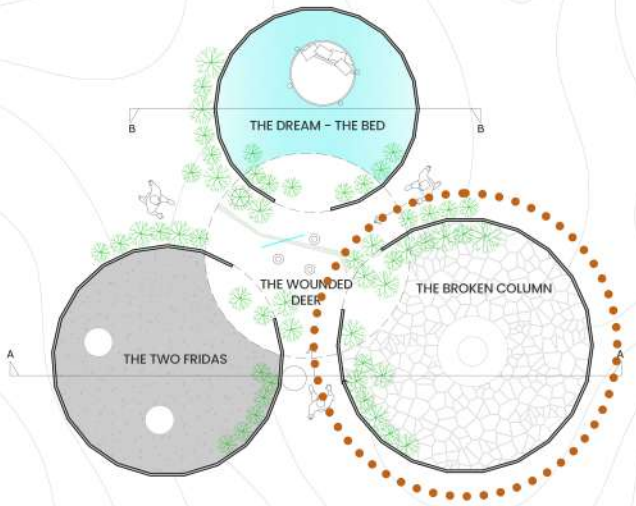
2025



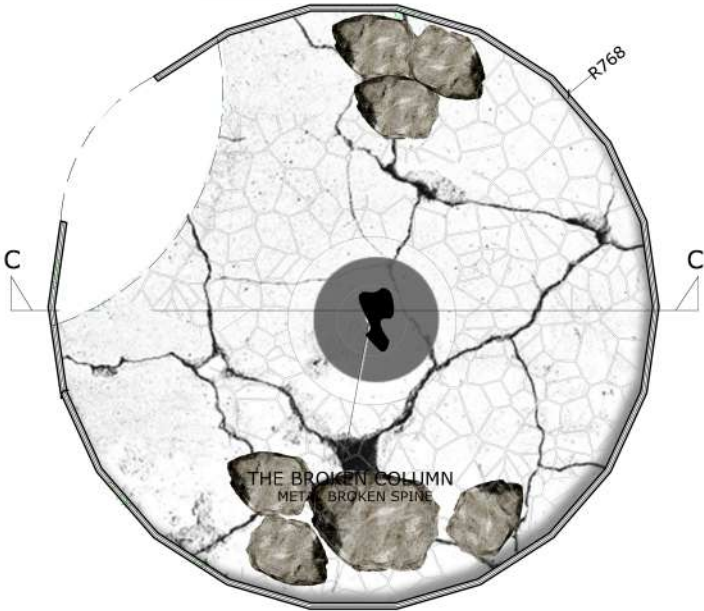
THE BROKEN COLUMN
CONNECTION DETAIL



THE BROKEN COLUMN
DETAIL



KEY PLAN



PLAN



THE BROKEN COLUMN

2025



THE BROKEN COLUMN

2025



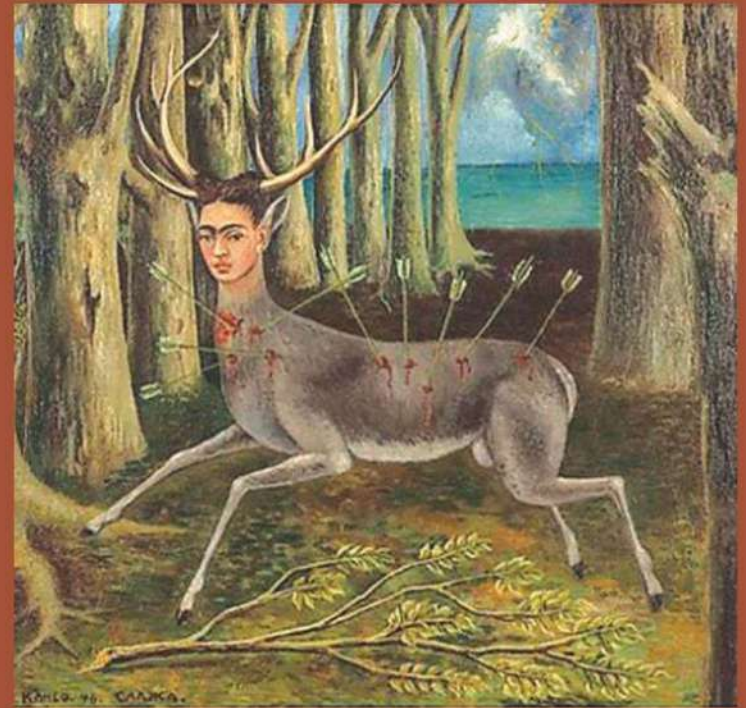
THE BROKEN COLUMN

2025

01. **DESIGN** INSPIRATIONS

DESPAIR DOME : 'THE WOUNDED DEER (1946)'

A labyrinthine forest installation features sharp, arrow-like projections, evoking a sense of foreboding. As visitors navigate the space, it progressively narrows, conveying the suffocating feelings of entrapment and heartbreak. Strategically placed mirrors distort perceptions, symbolizing the disorienting effects of self-doubt and betrayal.



05.3 THE WOUNDED DEER (1946)



A lone deer stands within a corridor of tangled shadows and tall trees, where illusion and reality entwine. This haunting forest becomes both a sanctuary and a snare, evoking quiet vulnerability and unresolved pain. Twisted branches pierce through arched spaces, as if nature itself bears witness to inner turmoil. Mirrors appear like portals, reflecting wounds that blur with the surrounding wilderness. Moss-covered surfaces and soft, filtered light create a delicate balance between serenity and suffering. Here, nature reclaims silence, becoming a metaphor for entrapment, memory, and healing. In this realm, pain lingers like smoke—distant yet deeply rooted—while the forest folds in on itself, holding within it the ache of transformation and the longing to escape.

GENERAL SELECTION OF MATERIALS



RED PAINT DRIPS

Indicates unresolved trauma.

GEODESIC DOME STRUCTURE

A dynamic structure showcasing 'The Broken Column' with a translucent fabric.

M A T E R I A L I T Y

WEATHERED WALL TEXTURE – Represents decay and abandonment, echoing emotional desolation and time-worn pain.

BARE TREE BRANCH – Symbolizes fragility, exposure, and the piercing vulnerability of the deer and Frida herself.

GRASS SURFACE – Reflects natural grounding and contrasts the wounded body with its living, breathing environment.

CRACKED GROUND – Mirrors physical and emotional rupture, alluding to isolation and internal wounds.

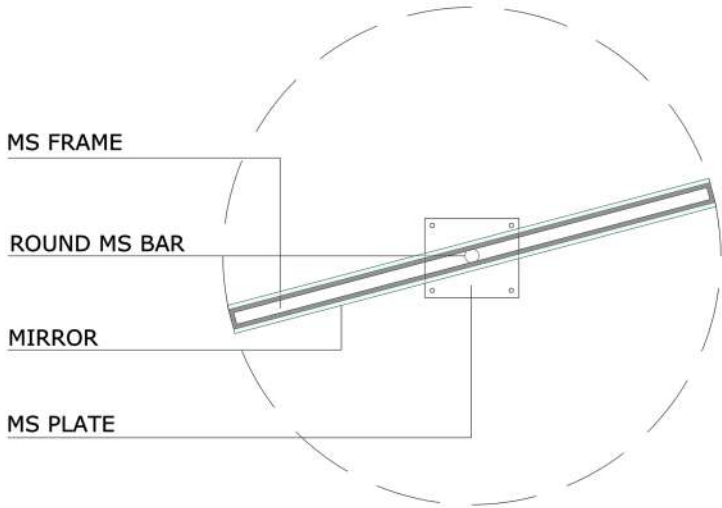
MOSS TEXTURE – Indicates quiet healing and emotional overgrowth, where nature slowly reclaims what was broken.

RED PAINT DRIPS – A direct metaphor for bleeding wounds, emotional intensity, and unresolved trauma.

COLOR PALETTE



05.3.1 TECHNICAL AND RENDERED DRAWINGS

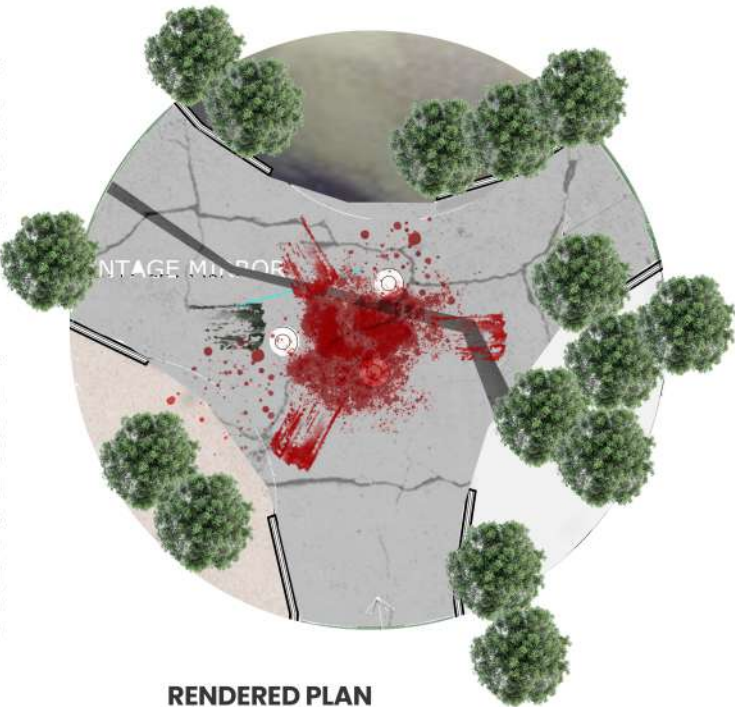


THE WOUNDED DEER ROTATING MIRROR DETAIL

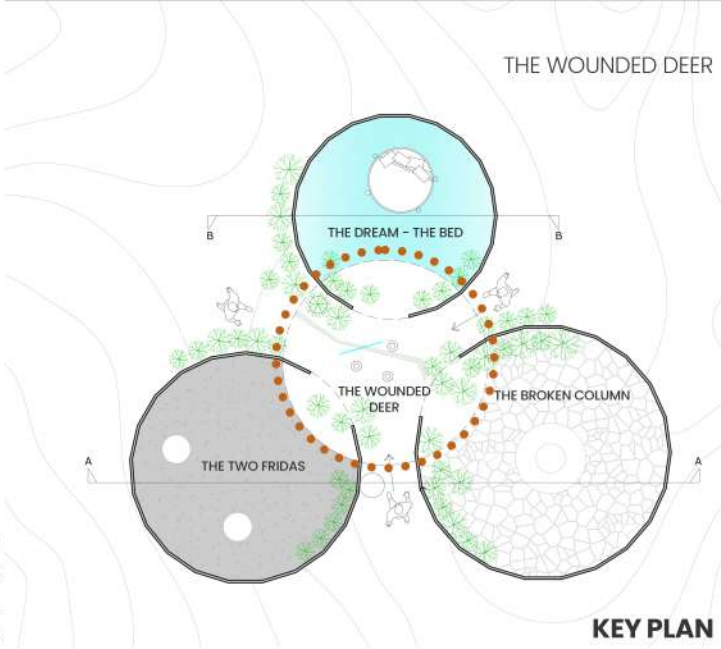
A circular MS frame supports a mirror panel fixed onto a central round MS bar. The bar is mounted onto an MS plate that allows rotational movement while maintaining stability. The rotational detail is designed to distribute minimal loads without compromising the structural integrity of the dome. The connection uses welded steel joints to ensure durability and resistance against lateral forces.

The Dome captures the visceral force of physical and emotional suffering embodied in Frida Kahlo's *The Broken Column*. The exterior is sheathed in jagged layers of rough paper-mâché, its fragmented surface echoing the splintered texture of her wounded body. This raw, tactile skin suggests rupture and fragility, setting a tone of strain before visitors even enter the space.

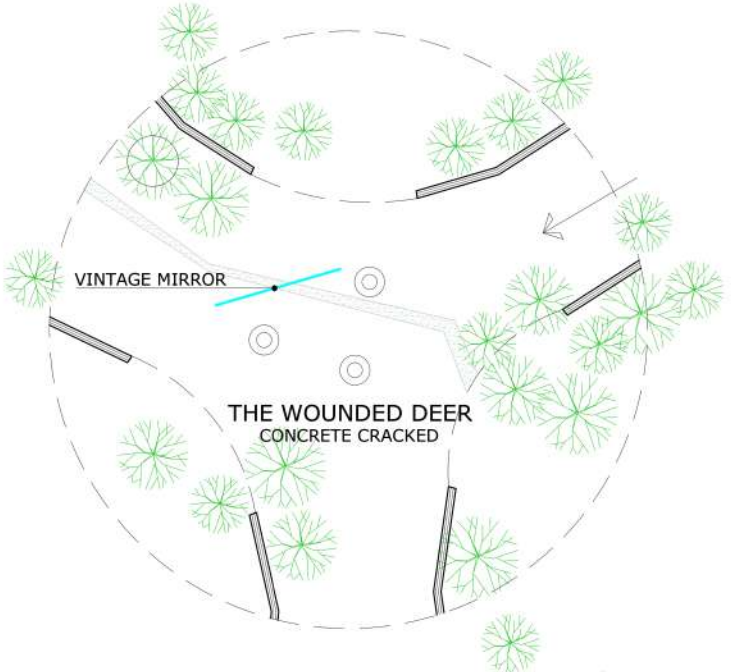
Inside, a suspended spine hangs precariously from the ceiling—fractured, exposed, and isolated—an unflinching symbol of her enduring agony. The starkness of the installation, stripped of ornament, intensifies its solemnity, allowing silence to become a medium of reflection. Within this emptiness, the space resonates with the weight of resilience and vulnerability, inviting viewers into a meditative confrontation with pain, endurance, and the fragile strength of the human spirit.



RENDERED PLAN



KEY PLAN



PLAN



THE WOUNDED DEER

2025



ENTRANCE TO THE DOMES

2025

01. **DESIGN** INSPIRATIONS

TRANQUILITY DOME : 'THE DREAM – THE BED (1940)'

A surreal, dreamlike environment features an oversized, floating bed, symbolizing life's fragility. Frida's skeletal form hovers above, achievable through projection or sculpture. Dynamic light and shadow, intensified by a kinetic ceiling, oscillate between life and death, immersing visitors in mortality and Frida's fantastical imagination.

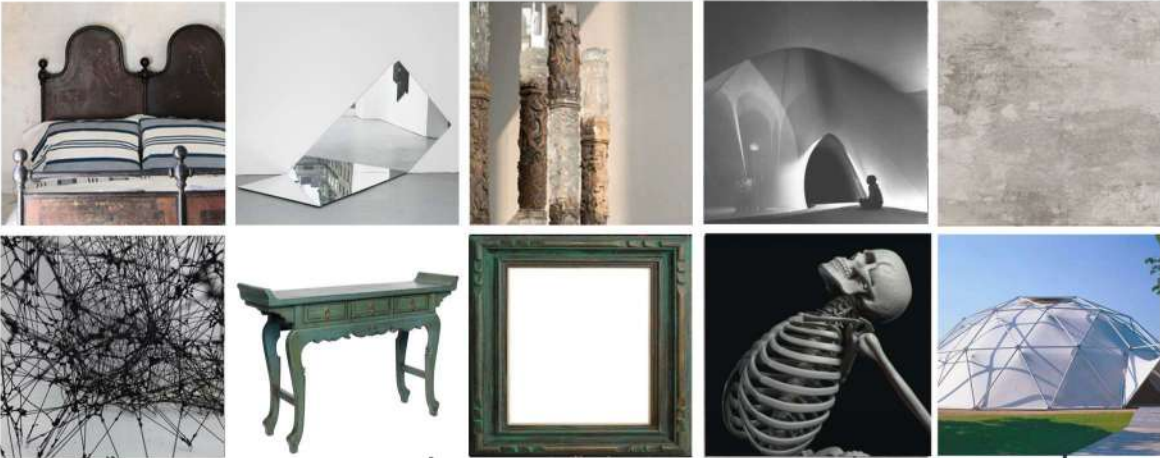


05.4 THE DREAM: THE BED (1940)



A suspended skeleton hovers above a levitating bed, casting an eerie yet quiet reminder of mortality within a surreal, dreamlike room. This haunting presence transforms the space into a theatrical meditation on life, death, and the fragile stillness of sleep. Inspired by Frida's intimate confrontation with unconscious fears, the setting blurs the boundary between comfort and existential unease. Threads tangle above and around the bed, enclosing it in a cocoon of surreal tension. These physical strands mirror the chaos of the subconscious, capturing a moment of rest suspended between vulnerability and entrapment. Within this delicate balance, death is not distant—it hovers, still and watchful, in a silent dialogue with the soul beneath.

GENERAL SELECTION OF MATERIALS



M A T E R I A L I T Y

- ANTIQUE WOODEN BEDFRAME** – Evokes historical intimacy and domesticity, grounding the installation in personal memory and traditional notions of rest.
- GLASS AND MIRROR** – Symbolizes fragility, reflection, and the disorienting duality of presence and absence, often linked to introspection and self-perception.
- ENTANGLED BLACK THREAD/WEBBING** – Represents psychological entrapment, subconscious tension, and the complexity of internal landscapes.
- BAROQUE-INSPIRED FURNITURE** – Adds theatrical elegance, suggesting the drama of mourning and the performance of memory.
- ORNATE PICTURE FRAME** – Serves as a metaphor for constructed identity and framed legacies, echoing the tension between image and reality.
- HUMAN SKELETON** – A direct emblem of mortality; central to the confrontation with death, memory, and bodily absence.

COLOR PALETTE

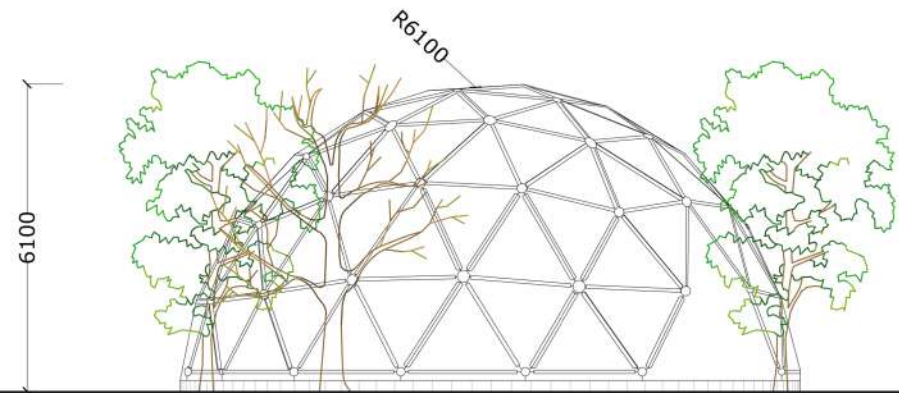


GEODESIC DOME STRUCTURE

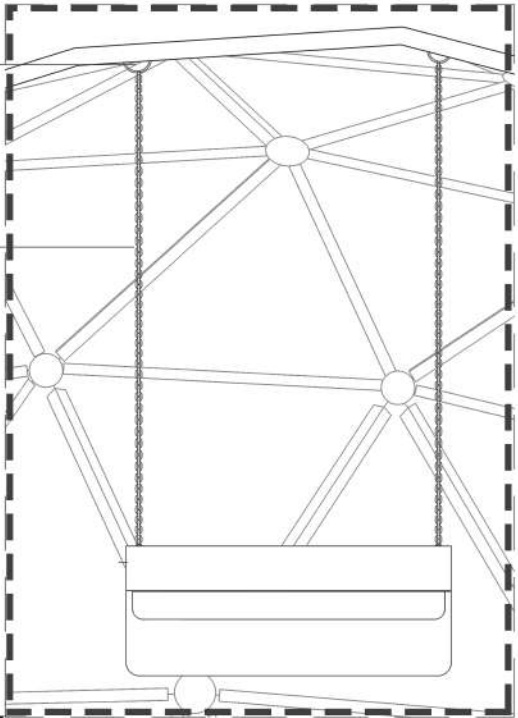
A dynamic structure showcasing 'The Dream: The Bed' with an opaque fabric.

05.4.1. TECHNICAL DRAWINGS

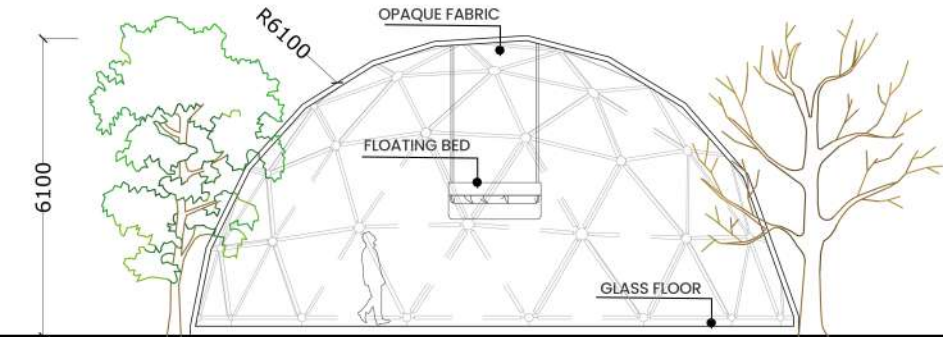
A suspended bed element is connected to the dome structure through chains fixed to steel hooks at the nodal intersections of the geodesic framework. The load from the hanging bed is transferred through the chains into the dome joints. The bed is stabilized by evenly distributed suspension points, preventing the swing displacement while ensuring load distribution across the dome's steel members.



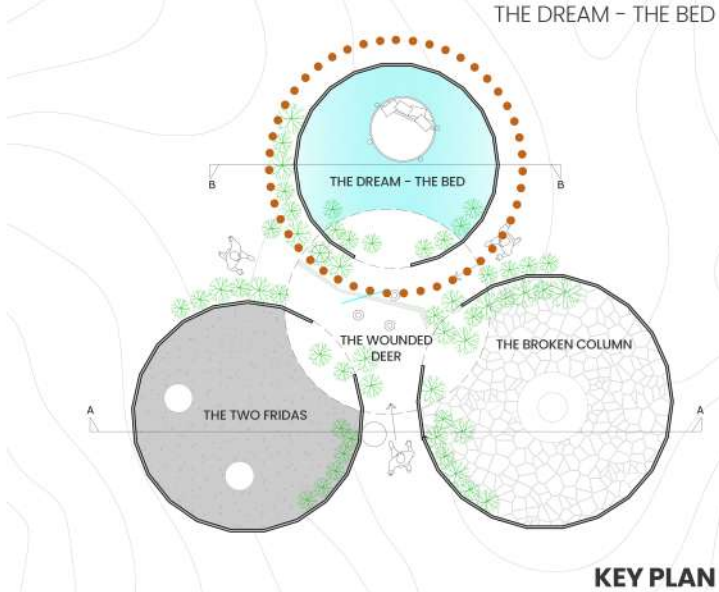
ELEVATION



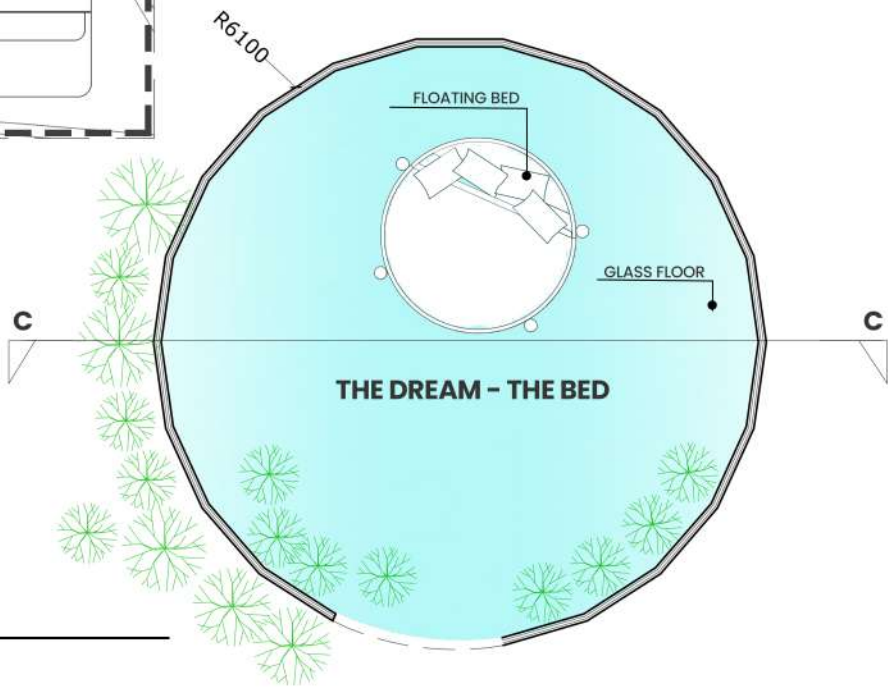
THE DREAM - THE BED
HANGING BED DETAIL



SECTION B-B



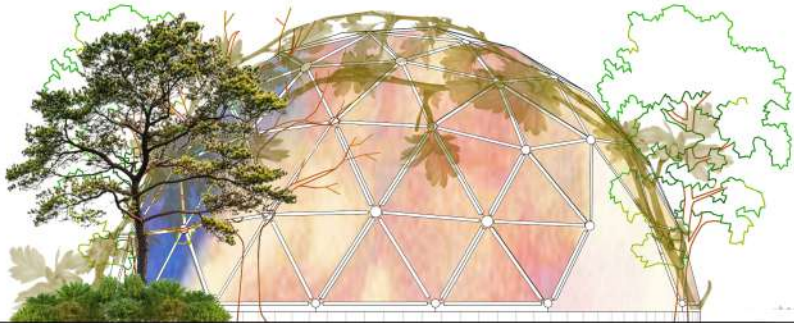
KEY PLAN



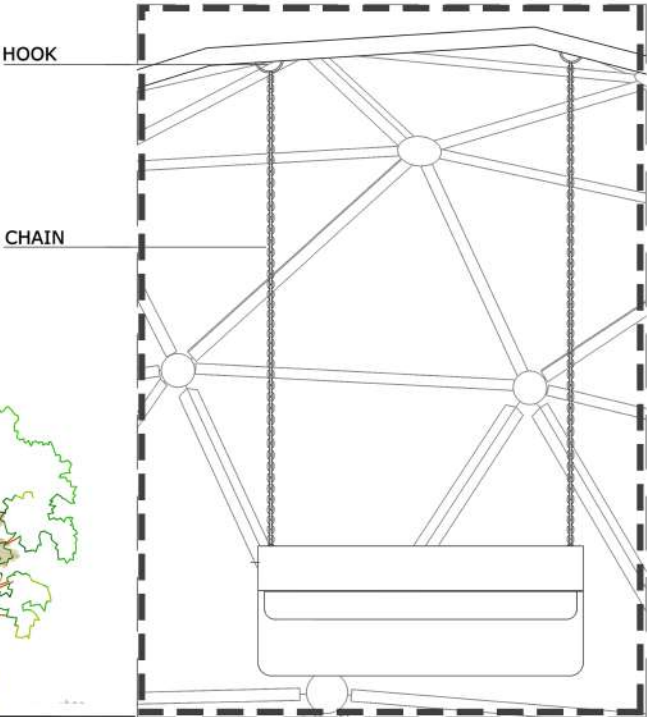
PLAN

05.4.2 RENDERED DRAWINGS

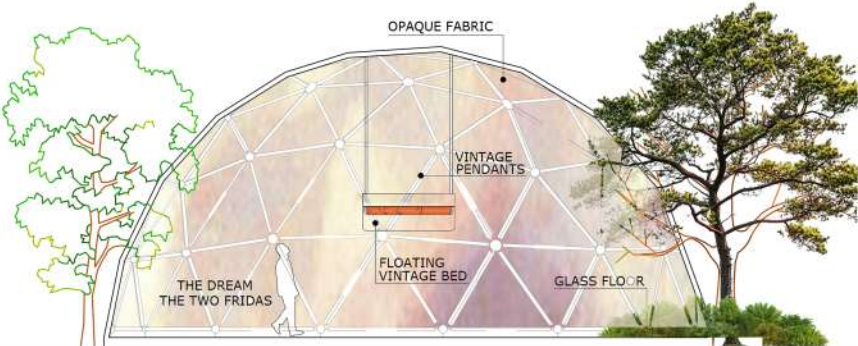
A suspended bed element is connected to the dome structure through chains fixed to steel hooks at the nodal intersections of the geodesic framework. The load from the hanging bed is transferred through the chains into the dome joints. The bed is stabilized by evenly distributed suspension points, preventing the swing displacement while ensuring load distribution across the dome's steel members.



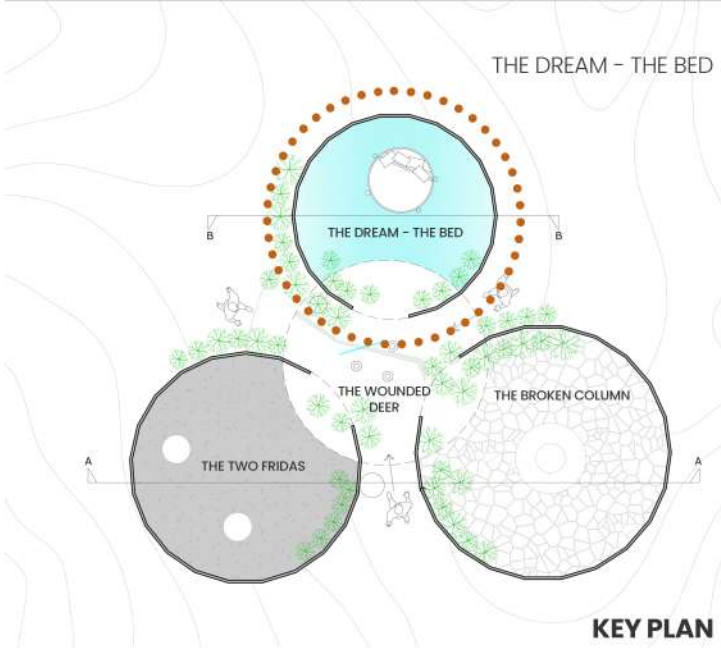
ELEVATION



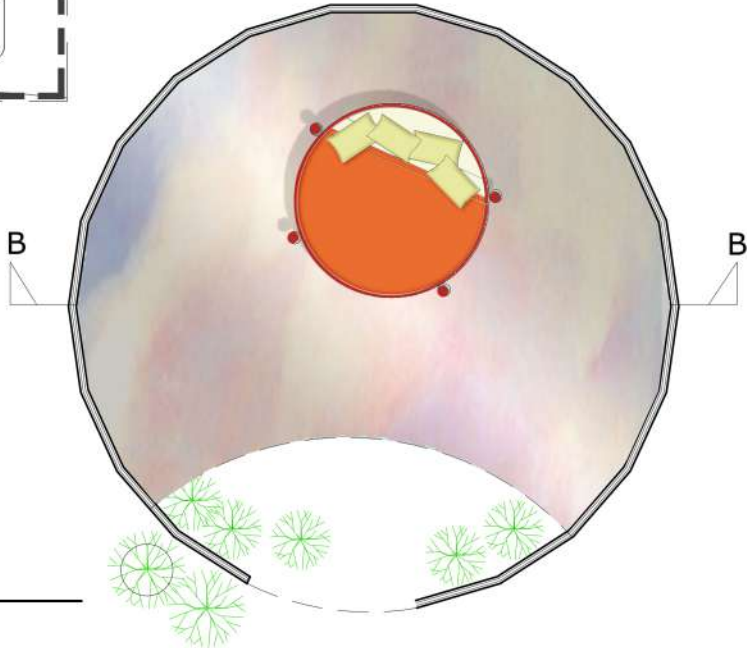
THE DREAM - THE BED
HANGING BED DETAIL



SECTION B-B



KEY PLAN



PLAN



THE DREAM – THE BED

2025



THE DREAM – THE BED

2025

INTERACTIVE DRAWING

07. INTERACTIVE DRAWING



The interactive drawings illustrate the domes in their layered, exploded form, revealing both structural logic and symbolic depth. **The Broken Column** shows a fractured ground plane supporting a central metallic spine that rises into the geodesic frame, emphasizing how rupture and stability coexist within the structure. **The Two Frida's** unfolds as a dome interlaced with cascading red tensile strings, each anchored to the base plane, symbolizing interconnection while serving as stabilizing ties within the framework. **The Dream – The Bed** presents a suspended composition, where the geodesic dome distributes loads to the foundation while a floating bed, held by chains at nodal points, balances delicately beneath a canopy layer, evoking a surreal, dreamlike environment. Together, these diagrams highlight how structural assemblies transform Frida Kahlo's imagery into architectural form.



08. BIBLIOGRAPHY

Thadani, R. (2025) Emotive Realms [Illustration]. In: Beyond the Canvas: Translating Frida Kahlo's Art into Immersive Spaces.

Kahlo, F., n.d. Self-portrait with thorn necklace and hummingbird [online]. Available at: <https://www.fridakahlo.org/self-portrait-with-thorn-necklace-and-hummingbird.jsp>

Street artist unknown, 2020. Mural of Frida Kahlo on building wall [online image]. Available at: <https://unsplash.com/photos/frida-kahlo-mural-example-link>

Unknown, n.d. Frida Kahlo wall art in outdoor space [online image]. Available at: <https://pinterest.com/someexamplelink> [Accessed 22 May 2025].

Thadani, R., 2025. Immersive spatial translation of Frida Kah lo's work [AI-generated image using Adobe Photoshop]. Included in: Thadani, R., 2025.

Rees, A.L. et al., 2011. Expanded cinema: art, performance, film. London: Tate Publishing.

Meni, S. (ed.), 2007. *Constructing place: mind and matter*. London: Routledge.

Mahon, N., 2011. Art direction: a guide to creative direction in advertising and branding. London: Laurence King.

Kettenmann, A., 2003. Frida Kahlo, 1907-1954: pain and passion. Cologne: Taschen

Unknown, n.d. Still from expanded cinema scene with theatrical lighting [online image]. Available at: <https://www.instagram.com/expanded.cinema>.

Unknown, n.d. Interactive projection art on building facade [online image]. Available at: <https://pinterest.com/examplelink-light>

Unknown, n.d. Stage set with illuminated door props [online image]. Available at: <https://pinterest.com/examplelink-props>

Unknown, n.d. Immersive large-scale set design with floral sculptures [on line image]. Available at: <https://pinterest.com/examplelink-scale>

Museo Frida Kahlo. (n.d.). Museo Frida Kahlo. Retrieved May 22, 2025, from <https://www.museofridakahlo.org.mx/?lang=en>

Jackie. 2016. [Film] Directed by Pablo Larraín. USA: Fox Searchlight Pictures.

Frida. 2002. [Film] Directed by Julie Taymor. USA: Miramax Films.

Ubcheva, T. (2022). Sacred Geometry, Golden Spiral, Fractals. Retrieved May 22, 2025, from <https://tsvetaphotography.com/en/sacred-geometry-golden-spiral-fractals/>

Kahlo, F. (1944). Broken Column. Oil on canvas. Museo Dolores Olmedo, Mexico City.

Kahlo, F. (1940). *The Dream (The Bed)*. Oil on canvas. Private collection.

Kah lo, F. (1939). The Two Fridas. Oil on canvas. Museo de Arte Moderno, Mexico City.

Kahlo, F. (1946). *The Wounded Deer*. Oil on canvas. Museo Dolores Olmedo, Mexico City.

Thadani, R. (2025). Dome Exploration [Digital sketch]. Created using Adobe Photoshop.

Thadani, R. (2025). Dome Exploration [Model photograph].

Thadani, R. (2025). Design development image [AI-assisted digital image]. Created using CAD sketches and Adobe Photoshop. Page

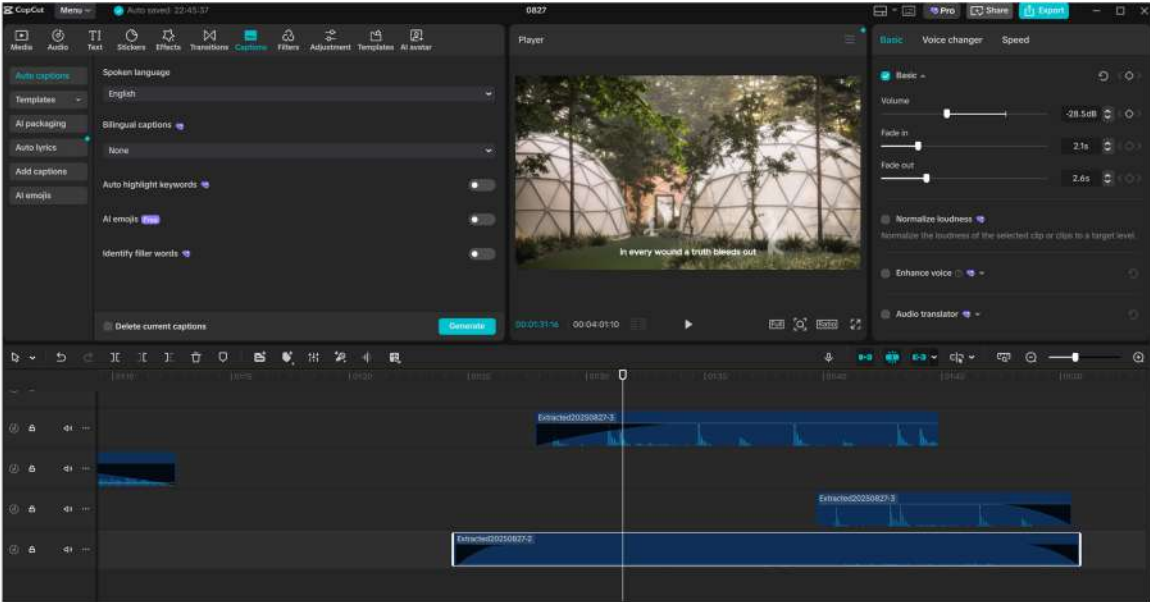
FILMS AND DOCUMENTARIES

<https://www.netflix.com/watch/60024997?trackId=14277281&tctx=-97%2C-97%2C%2C%2C%2C%2C%2C%2C%2CVideo%3A60024997%2CdetailsPagePlayButton>

<https://www.youtube.com/watch?v=Xj5jt7y3B6w>

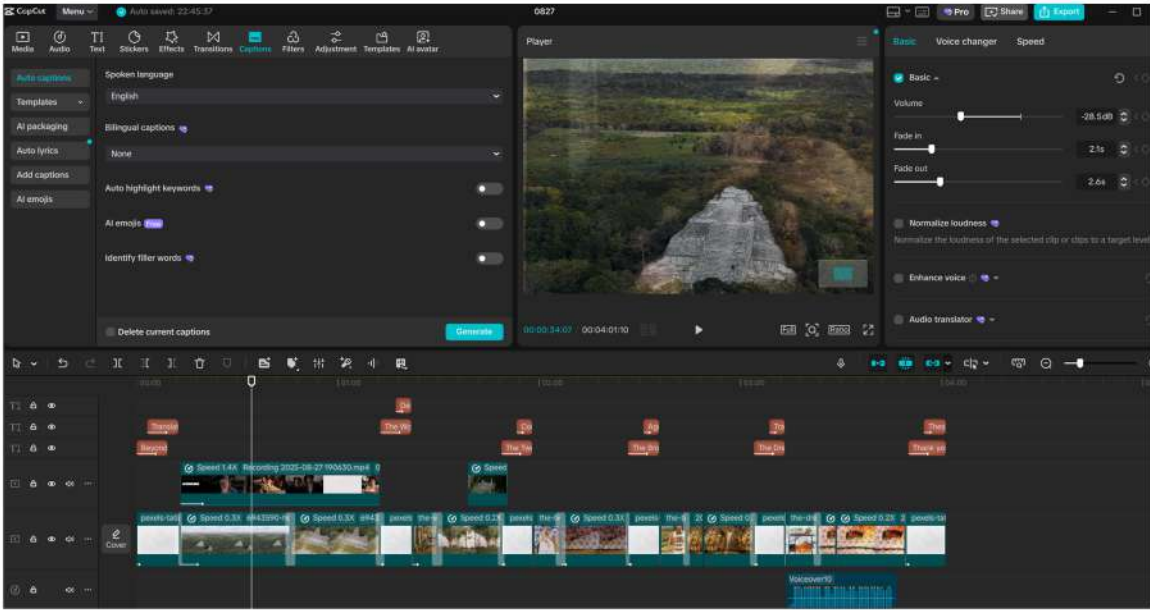
<https://www.youtube.com/watch?v=vEt0f2xzB54>

09. THESIS FILM

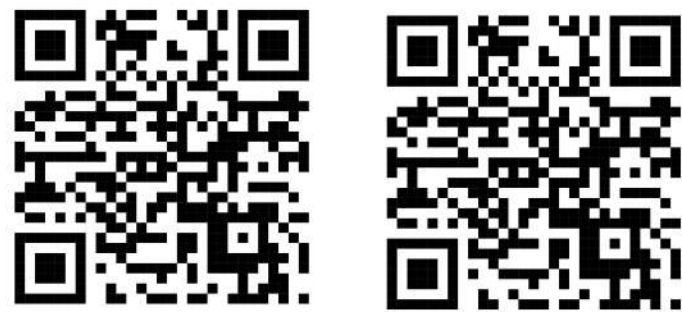


THESIS FILM LINK & QR CODE

<https://drive.google.com/file/d/17SM6V4Zp0Qto48aeyfv7VvxSb31XfUFu/view?usp=sharing>



10. PROFESSIONAL NETWORKING



Professional CV and Portfolio links

Home Staging London Internship

kelly.yau@homestaginglondon.co.uk

to me, Erin

Wed, Jul 16, 4:47 PM

☆

😊

↶

⋮

Hi Rimple,

Thank you for your interest in our internship opportunity. We are looking for someone to start asap and it appears like you could be a good fit.

Please note, this is an unpaid 3-month internship and we cover cost of all travel within the greater London area (London-based applicants preferred). We ask for 3 days/week but we are flexible on the days because we know some applicants have part time jobs, school or other commitments. However, we would still require the full 36 days. In return, you will receive excellent work experience, guided by a wonderful team who will help you learn everything there is to know about the home staging business.

At the end of a successful internship, we provide helpful referrals for future employment, based on your performance and contribution to the team. We cannot guarantee a position within our company but when we do need to hire for our rapidly growing business, we always look to our interns first.

The next step would be an informal chat. Please let us know your availability for next week and we will confirm a time to answer any of your questions and for you to meet the team.

Best,

Kelly Yau

Marketing and Operations Manager | www.homestaginglondon.co.uk

T: +44(0) 207 780 8700

E: kelly.yau@homestaginglondon.co.uk

A: Home Staging London LTD, 39 Grove Lane, London, SE5 8SP

I'm in the process of making lists of companies in London and Bristol. I have applied to more than 150 companies. So far i have been able to secure a 3 month internship in London at Home Staging London. My goal is to keep exploring companies and design studios to get a more clear vision of the professional market.

London

File Edit View Insert Format Data Tools Extensions Help

100% 123 Arial 10 B I A

Companies

Companies	Links	Specialties	Emails	Date Applied	Follow up	Application status	Sponsored
Foster+Partners	https://www.fosterandpartners.com/	Global architecture, urbanism, and design.					Yes
Heatherwick Studio	https://heatherwick.com/projects/buildings/	Innovative architecture and design across various scales.		23 June 2025		Applied	No
Adjaye Associates	https://www.adjaye.com/works/	Cultural, civic, and residential architecture.		23 June 2025		Applied	Yes
Squire and Partners	https://squireandpartners.com/interior-design/residential/	Architecture, interior design, and master planning.		23 June 2025		Applied	No
Alison Brooks Architects	https://alisonbrooksarchitects.com/	Housing, education, and cultural projects.		23 June 2025		Applied	Yes
Small to Mid-Sized Innovative Studios							
A small studio	https://www.asmallstudio.co.uk/	Site-specific and responsive architectural projects.		23 June 2025		Applied	No
Urbanist Architecture	https://urbanistarchitecture.co.uk/portfolio/	Residential architecture and planning permissions.		23 June 2025		Applied	Yes
Studio Wolsey	https://studiowolsey.com/	Residential transformations and bespoke designs.		23 June 2025		Applied	No
MAWD	https://mawd.co/	Luxury interior design with a global presence.		23 June 2025		Applied	No
David Collins Studio	https://www.davidcollins.studio/	Interior architecture and design.		23 June 2025		Applied	Yes
Tara Bernerd	https://www.tarabernerd.com/	Interior architectural design with a focus on hotels and residences.				Not open	Yes
Taylor Howes	https://taylorhowes.co.uk/	Luxury interior design.		23 June 2025		Applied	No

Bristol

File Edit View Insert Format Data Tools Extensions Help

100% 123 Arial 10 B I A

Companies

Companies	Links	Specialties	Emails	Date Applied	Follow up	Application status	Sponsored
BDP (Building Design Partnership)	https://www.bdp.com/uk/studios/bristol	Multidisciplinary design including architecture and interior design.					No
Joseph King Interiors	https://www.josephkinginteriors.co.uk/?utm_source=chatgpt.com	Personalized and bespoke interior design services.					No
Alec French Architects	https://alecfrench.co.uk/	Creative and sustainable architectural projects.					No
Barefoot Architects	https://www.barefootarchitects.co.uk/	Ethical and ecological residential and community projects.					No
Emmett Russell Architects	https://emmettrussell.co.uk/	Imaginative designs in housing, education, and community buildings.					No
Moon design	https://designbymoon.co.uk/	Residential architecture with a focus on practicality and beauty.					No
Clifton Architects	https://www.cliftonarchitects.com/	Diverse projects including health centers and nurseries.					No
Stretto Architects	https://www.strettoarchitects.co.uk/home	Healthcare, residential, leisure, and retail projects.					Yes

2025